



ELIEL

CUSTOM SALES

# VISUAL LINE PLAN 2023









- Eliel Aero Fit
- Low-profile, tapered collar
- Proprietary Eliel 3D woven fabric on sleeves and shoulders is wind-tunnel tested and aero-optimized
- Longer length aerodynamic sleeves
- Laser-cut sleeve hem for comfort and weight reduction
- Full-length locking zipper for controlled venting
- Zipper garage at hem protects bibs
- Pockets:
  - Positioned and tapered for easy entry
  - Reinforced
  - Eliel No-Sag Structure keeps gear in place
  - Zip-pocket for securing valuables
- Waist gripper keeps jersey in place
- Reflective trim for visibility
- UPF 50+ Sun Protection

## WHY WE MADE THIS?

The Aero Fit El Capitan Jersey was designed for racing and fast group rides. Slight compression all around keeps the jersey smooth and snug to cheat the wind and to keep gear in the pockets secure during hard efforts in and out of the saddle. Wind tunnel proven 3D woven fabrics give you an added aerodynamic advantage on every ride. Race and KOM killer.

# EL CAPITAN

**JERSEYS** 2023  
CUSTOM





# 2023 JERSEYS CUSTOM

## DIABLO

### WHY WE MADE THIS?

The Race Cut Diablo Jersey was designed to keep you cool in hot weather. Strategic UPF fabrics in the back and arms ward off direct sunlight while riding and the ultra light breathable front and side mesh panels allow maximal air flow for cooling. Structural reinforcements and refinements allow for everyday use and durability. Ultra light materials also make this jersey a featherweight for climbing enthusiasts. According to our review in Bicycling Magazine, The Eliel Diablo Jersey was the top performer in the lab and most comfortable on the road.



- Eliel Race Fit
- Open mesh chest and side panels for ventilation and breathability
- Back panel features NILIT Breeze® Nylon Cooling Yarn to help maintain comfortable body temperature
- Low-profile collar
- Longer length aerodynamic sleeves
- Laser-cut sleeve hem for comfort and weight reduction
- Full-length locking zipper for controlled venting
- Zipper garage at hem protects bibs
- Pockets:
  - Positioned and tapered for easy entry
  - Reinforced
  - Eliel No-Sag Structure keeps gear in place
  - Zip-pocket for securing valuables
- Waist gripper keeps jersey in place
- Reflective trim for visibility
- UPF 50+ Sun Protection



## SOLANA JERSEY

**MJS48**



**WJS48**



**MJL14**



**WJL14**



## LONG SLEEVE SOLANA JERSEY

- Eliel Race Fit
- Highly-breathable mesh body fabric
- Low-profile collar
- Longer length aerodynamic sleeves
- Full-length locking zipper for controlled venting
- Zipper garage at hem protects bibs
- Pockets:
  - Positioned and tapered for easy entry
  - Reinforced
  - Eliel No-Sag Structure keeps gear in place
  - Zip-pocket for securing valuables
- Waist gripper keeps jersey in place
- Reflective trim for visibility
- UPF 30+ Sun Protection

- Eliel Race Fit
- Low-profile collar
- Long sleeves for additional sun protection
- Full-length locking zipper for controlled venting
- Zipper garage at hem protects bibs
- Pockets:
  - Positioned and tapered for easy entry
  - Reinforced
  - Eliel No-Sag Structure keeps gear in place
  - Zip-pocket for securing valuables
- Waist gripper keeps jersey in place
- Reflective trim for visibility
- UPF 30+ Sun Protection

# SOLANA

4

## WHY WE MADE THIS?

The Race Fit Solana Jersey is a race-day/every day favorite, designed with a higher stretch body to be more aerodynamic but still comfortable. Contemporary design includes slightly longer "set in" sleeves and low profile collar. A modern take on the everyday performance classic jersey.

**JERSEYS** 2023  
CUSTOM



elielcycling.com





# 2023 JERSEYS CUSTOM

## RINCON

### WHY WE MADE THIS?

This original Elie Race Fit jersey was designed with riding comfort and performance in mind. Ultra breathable Italian knit body fabric keeps you cool also works in a wide range of temperatures. Sleeve and Shoulder fabric lays flat for aerodynamics, is soft and flexible to comfortably wrap around arms and shoulders, and doesn't require a gripper to stay in place. If you only own one Elie Jersey, this is a great choice.

#### RINCON JERSEY

##### MJS47



##### WJS47



- Elie Race Fit
- Highly-breathable mesh body fabric
- Low-profile collar
- Full-length locking zipper for controlled venting
- Zipper garage at hem protects bibs
- Pockets:
  - Positioned and tapered for easy entry
  - Reinforced
  - Elie No-Sag Structure keeps gear in place
  - Zip-pocket for securing valuables
- Waist gripper keeps jersey in place
- Reflective trim for visibility
- UPF 30+ Sun Protection

#### RELAXED FIT RINCON JERSEY

##### MJS43



##### WJS43



- Elie Relaxed Fit
- Full-length locking zipper for controlled venting
- Zipper garage at hem protects bibs
- Pockets:
  - Positioned and tapered for easy entry
  - Reinforced
  - Elie No-Sag Structure keeps gear in place
  - Zip-pocket for securing valuables
- Waist gripper keeps jersey in place
- Reflective trim for visibility
- UPF 30+ Sun Protection



# RELAXED FIT RF / MALIBU JERSEY

MJS44

WJS44



- Eliel Relaxed Fit
- Full-length locking zipper for controlled venting
- Zipper garage at hem protects bibs
- Pockets:
  - Positioned and tapered for easy entry
  - Reinforced
  - Eliel No-Sag Structure keeps gear in place
- Waist gripper keeps jersey in place
- Reflective trim for visibility
- UPF 30+ Sun Protection

# LONG SLEEVE RELAXED FIT MALIBU JERSEY

MJL44

WJL44



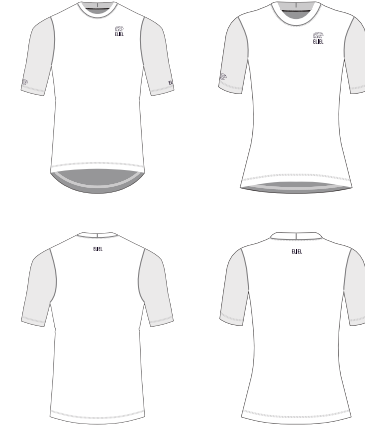
- Eliel Relaxed Fit
- Full-length locking zipper for controlled venting
- Zipper garage at hem protects bibs
- Pockets:
  - Positioned and tapered for easy entry
  - Reinforced
  - Eliel No-Sag Structure keeps gear in place
- Waist gripper keeps jersey in place
- Reflective trim for visibility
- UPF 50+ Sun Protection

## WHY WE MADE THIS?

The Malibu is a classic Relaxed Fit jersey whose comfort and performance match it's simplicity. Great all around jersey for those relaxed ride days. Coffee stops and friends are mandatory with this jersey.

MJS42

WJS42



# GRAVEL TEE

- Tailored on the bike fit with longer sleeve length and dropped tail hem
- UPF 50+ Sun Protection

## WHY WE MADE THIS?

Gravel T was designed with a tailored fit to provide maximum comfort for any gravel adventure. Sporting longer sleeves and ultimate sun protection, this high-performance top will go as far as you want your bike to take you.

**JERSEYS** 2023  
CUSTOM

elielcycling.com

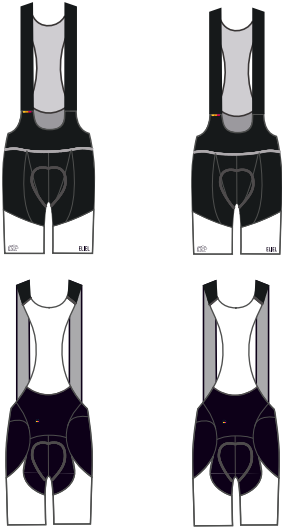






# 2023 BIBS CUSTOM



**MBSS39 (V2) WBSS39**
**IN-SET PANEL  
EL CAPITAN BIB**


- Crafted in California
- High-density compressive fabric
  - optimal mix of muscle support and comfort
  - high-opacity prevents see through
  - holds chamois in place to prevent chafing
- Anatomically cut to move with the body in riding position
- Carbon mesh waist and back upper for heat dissipation
  - heat dissipation
  - bacteriostatic prevents odor
  - hypo-allergenic
  - additional protection from harmful UV-A and UV-B exposure
- Laser-cut straps lay flat
- Silicone printed directly onto fabric
  - eliminates need for separate band
  - seamless, aero-dynamic fit
  - hypo-allergenic
  - breathable
  - non-slip
- 11" Inseam on medium, scaled up or down according to size
- 8.5" Inseam on medium, scaled up or down according to size (WOMEN'S SKU)
- Reflective trim for visibility
- 50+ UPF

SHORT LENGTH **\*V2**



**EL CAPITAN**

**WHY WE  
MADE THIS?**

The Aero Fit El Capitan Bib was designed for racing and fast group rides. Performance compression all around supports hard working muscles while intricate patterning keeps the bib and chamois in place to keep you focused on finishing your ride or race strong. Race and KOM killer.

**BIBS** 2023  
C U S T O M

elielcycling.com







# 2023 BIBS

## C U S T O M

MBSS20

WBSS20

MBSS20 (V2)

DIABLO BIB 2.0

SHORT LENGTH  
DIABLO BIB 2.0 (SHORT LENGTH)



- High-density compressive fabric
  - optimal mix of muscle support and comfort
  - high-opacity prevents see through
  - holds chamois in place to prevent chafing
- Anatomically cut to move with the body in riding position
- Carbon mesh leg panels, waist and back upper for heat dissipation
  - heat dissipation
  - bacteriostatic prevents odor
  - hypo-allergenic
  - additional protection from harmful UV-A and UV-B exposure
- Laser-cut straps lay flat
- Silicone woven leg grippers
  - hypo-allergenic
  - breathable
  - non-slip
- 11" Inseam on medium, scaled up or down according to size
- 8" Inseam on medium, scaled according to size (WOMEN'S SKU)
- Reflective trim for visibility
- UPF 50+

- High-density compressive fabric
  - optimal mix of muscle support and comfort
  - high-opacity prevents see through
  - holds chamois in place to prevent chafing
- Anatomically cut to move with the body in riding position
- Carbon mesh leg panels, waist and back upper for heat dissipation
  - heat dissipation
  - bacteriostatic prevents odor
  - hypo-allergenic
  - additional protection from harmful UV-A and UV-B exposure
- Laser-cut straps lay flat
- Silicone woven leg grippers
  - hypo-allergenic
  - breathable
  - non-slip
- 9.5" Inseam on medium, scaled up or down according to size
- Reflective trim for visibility
- UPF 50+

\***V2**  
SHORT LENGTH

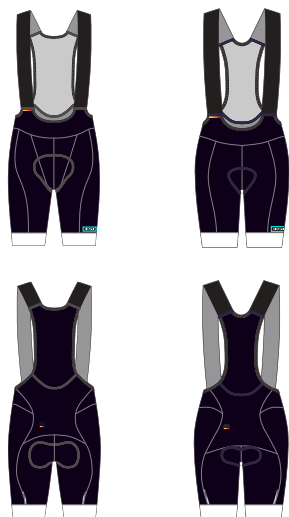
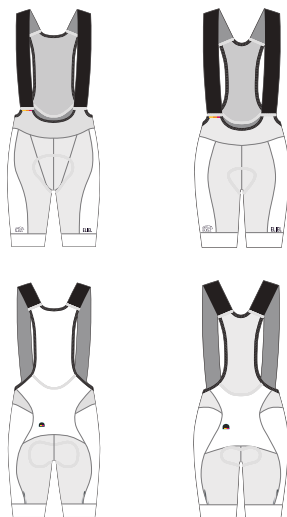
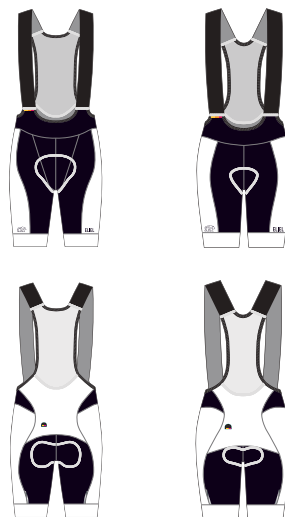
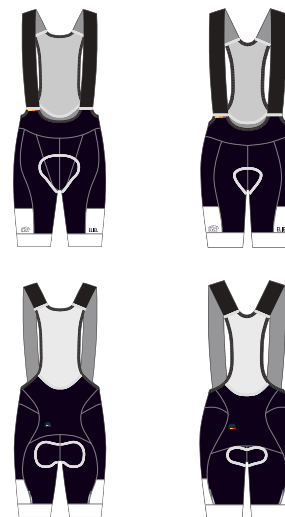
DIABLO BIB

## WHY WE MADE THIS?

Born from the Laguna Seca pattern but adding carbon mesh side panels on the legs to increase airflow for hot conditions while retaining proper compression for performance. Sun's out and so is the Diablo Bib.

**MBSS27 (V2) WBSS27**

LAGUNA SECA BIB 2.0

**MBSS34 (V2) WBSS34**FULL PRINT  
LAGUNA SECA BIB 2.0**MBSS35 (V2) WBSS35**SIDE PRINT  
LAGUNA SECA BIB 2.0**MBSS30 (V2) WBSS30**HALF IN-SET PANEL  
LAGUNA SECA BIB 2.0

- High-density compressive fabric
  - optimal mix of muscle support and comfort
  - high-opacity prevents see through
  - holds chamois in place to prevent chafing
- Anatomically cut to move with the body in riding position
- Carbon mesh waist and back upper
  - heat dissipation
  - bacteriostatic prevents odor
  - hypo-allergenic
  - additional protection from harmful UV-A and UV-B exposure
- Laser-cut straps lay flat
- Silicone woven leg grippers
  - hypo-allergenic
  - breathable
  - non-slip
- 11" Inseam on medium, scaled up or down according to size
- 8" Inseam on medium, scaled according to size (WOMEN'S SKU)
- Reflective trim for visibility
- UPF 50+

- High-density compressive fabric
  - optimal mix of muscle support and comfort
  - high-opacity prevents see through
  - holds chamois in place to prevent chafing
- Anatomically cut to move with the body in riding position
- Carbon mesh waist and back upper
  - heat dissipation
  - bacteriostatic prevents odor
  - hypo-allergenic
  - additional protection from harmful UV-A and UV-B exposure
- Laser-cut straps lay flat
- Silicone woven leg grippers
  - hypo-allergenic
  - breathable
  - non-slip
- 9.5" Inseam on medium, scaled up or down according to size
- Reflective trim for visibility
- UPF 50+

**\*V2**  
SHORT LENGTH

LAGUNA SECA

**WHY WE  
MADE THIS?**

You can never rest on your laurels. The Laguna Seca Bib put Eliel on the map. The 2.0 raises the bar. Refined and improved patterning looks amazing and is incredibly comfortable, supporting all your riding goals. A true workhorse that works as well for a hard, long ride as it does for a coffee shop cruise. Equally at home on the road, in gravel or on the trail.

**BIBS**  
CUSTOM 2023







# 2023 BIBS

## C U S T O M

**MBSS25 (V2)**
**WBSS25**
**MBSS31 (V2)**
**WBSS31**
**MBSS32 (V2)**
**WBSS32**
**CARGO BIB**
**FULL PRINT CARGO BIB**
**PRINTED POCKETS CARGO BIB**
**CARGO BIB**

- High-density compressive fabric
  - optimal mix of muscle support and comfort
  - high-opacity prevents see through
  - holds chamois in place to prevent chafing
- Anatomically cut to move with the body in riding position
- Carbon mesh waist and back upper
  - heat dissipation
  - bacteriostatic prevents odor
  - hypo-allergenic
  - additional protection from harmful UV-A and UV-B exposure
- Laser-cut straps lay flat
- Pockets:
  - Exterior cargo pockets on both legs
  - Rear mesh bib pockets positioned for easy entry
- Silicone woven leg grippers
  - hypo-allergenic
  - breathable
  - non-slip
- 11" Inseam on medium, scaled up or down according to size
- 8" Inseam on medium, scaled according to size (WOMEN'S SKU)
- Reflective trim for visibility
- UPF 50+

- High-density compressive fabric
  - optimal mix of muscle support and comfort
  - high-opacity prevents see through
  - holds chamois in place to prevent chafing
- Anatomically cut to move with the body in riding position
- Carbon mesh waist and back upper
  - heat dissipation
  - bacteriostatic prevents odor
  - hypo-allergenic
  - additional protection from harmful UV-A and UV-B exposure
- Laser-cut straps lay flat
- Pockets:
  - Exterior cargo pockets on both legs
  - Rear mesh bib pockets positioned for easy entry
- Silicone woven leg grippers
  - hypo-allergenic
  - breathable
  - non-slip
- 9.5" Inseam on medium, scaled according to size
- Reflective trim for visibility
- UPF 50+

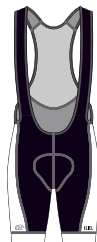
**\*V2**  
SHORT LENGTH



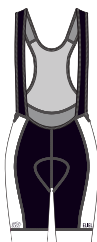
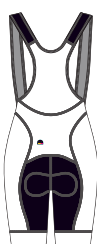
### WHY WE MADE THIS?

Born from the Laguna Seca pattern we added additional cargo pockets for more storage and easy access to support all your adventures. Secret storage under your jersey or loose shirt are perfect for valuables while the side pockets work great for easy access to nutrition or to access your phone for documenting that amazing view you just earned from that epic climb. Hit the road or trails and be home by dark (or not, sorry Mom)

MBSPP01



WBDPP01

COMFORT FIT  
MALIBU BIB

- High-density fabric
  - balanced muscle support and comfort
  - high-opacity prevents see through
  - holds chamois in place to prevent chafing
- Anatomically cut to move with the body in riding position
- Breathable mesh back upper
- Soft-bound straps hold bibs in place
- Silicone woven leg grippers
  - hypo-allergenic
  - breathable
  - non-slip
- 11" Inseam on medium, scaled according to size
- 8" Inseam on medium, scaled according to size (WOMEN'S SKU)
- Reflective trim for visibility
- UPF 50+

### WHY WE MADE THIS?

The Malibu bib is a super comfortable and classy bib for shorter rides. Slightly less compressive than the Laguna Seca. It is perfect for those shorter and mid length rides. Coffee stops and friends are mandatory with this Bib and the complementary jersey.

MSH04



WSH03

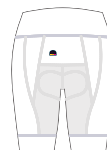
PRINTED BANDS  
LAGUNA SECA CYCLING SHORT

- High-density compressive fabric
  - optimal mix of muscle support and comfort
  - high-opacity prevents see through
  - holds chamois in place to prevent chafing
- Anatomically cut to move with the body in riding position
- Silicone woven leg grippers
  - hypo-allergenic
  - breathable
  - non-slip
- 11" Inseam on medium, scaled up or down according to size
- 8" Inseam on medium, scaled according to size (WOMEN'S SKU)
- Reflective trim for visibility
- UPF 50+

MSH05



WSH01

FULL PRINT  
LAGUNA SECA CYCLING SHORT

MSH06



WSH02

SIDE PANEL PRINT  
LAGUNA SECA CYCLING SHORT

### WHY WE MADE THIS?

Based on our best-selling Laguna Seca Bib, this short looks amazing and is incredibly comfortable, supporting all your riding goals. A true workhorse that works as well for a hard, long ride as it does for a coffee shop cruise. Equally at home on the road, in gravel or on the trail.

# BIBS / SHORTS

C U S T O M 2023







# 2023 OUTERWEAR CUSTOM



## MAJ15

## WAJ15

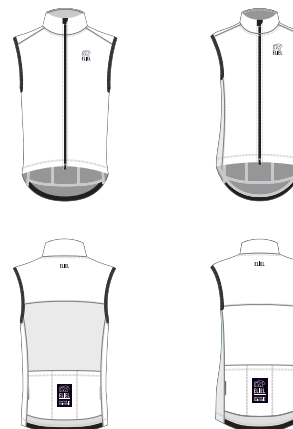
THERMAL  
SIERRA JACKETWHY WE  
MADE THIS?

Sierra jacket was designed for optimal comfort and warmth to keep you rolling in cooler climates. The high-performance 3-layer fabric construction includes a membrane for ultimate wind, water, and thermal protection. The super stretch material provides versatile form fit layering options with reflective outer pockets for additional visibility and storage. Your performance won't be compromised as you stay protected from the elements.

- Eliel Relaxed Fit
- Triple-layered fabric
  - Exterior fabric layer with durable water repellant finish
  - Ultra-thin membrane with high level of transpiration and resistance to water
  - Fleece backing for comfort and insulation
- Stretch, brushed fleece inserts and sleeve panel for comfort and improved fit
- Two-way separating locking zipper for controlled venting in either direction
- Full length zipper flap provides additional weather protection
- Pockets:
  - Positioned for easy entry
  - Reinforced
  - Eliel No-Sag Structure keeps gear in place
- Waist gripper keeps jacket in place
- Reflective trim for visibility
- UPF 50+ Sun Protection

## MVE15

## WVE15

THERMAL  
SIERRA VESTWHY WE  
MADE THIS?

Sierra Vest was designed for days when you need a comfortable, warm layer to keep you rolling in cooler climates. The high-performance 3-layer fabric construction includes a membrane for ultimate wind, water, and thermal protection. The super stretch material provides versatile form fit layering options with reflective outer pockets for additional visibility and storage.

- Eliel Relaxed Fit
- Triple-layered fabric
  - Exterior fabric layer with durable water repellant finish
  - Ultra-thin membrane with high level of transpiration and resistance to water
  - Fleece backing for comfort and insulation
- Stretch, brushed fleece inserts for comfort and improved fit
- Two-way separating locking zipper for controlled venting in either direction
- Full length zipper flap provides additional weather protection
- Pockets:
  - Positioned for easy entry
  - Reinforced
  - Eliel No-Sag Structure keeps gear in place
- Waist gripper keeps vest in place
- Reflective trim for visibility
- UPF 50+ Sun Protection

# OUTERWEAR

C U S T O M 2023







# 2023 OUTERWEAR

## C U S T O M

MAJ16

WAJ16

### WHY WE MADE THIS?

The Palomar jacket was made to be a multi-season all-rounder piece of outerwear for your complete apparel gear system. The mid-weight 3-layer fabric construction includes a wind and water repellent stretch membrane that gives great protection from the elements and a comfortable fit on chilly longer days in the saddle. Outer pockets offer additional storage and easy reach for essentials like a phone or nutrition. This is your essential jacket.

THERMAL PALOMAR JACKET



- Eliel Relaxed Fit
- Triple-layered fabric
  - Exterior fabric layer with durable water repellent finish
  - Ultra-thin membrane with high level of transpiration and resistance to water
  - Lightly brushed backing for comfort and insulation
- Mesh back panel to prevent overheating
- Two-way separating locking zipper for controlled venting in either direction
- Full length zipper flap for additional weather protection
- Pockets:
  - Positioned for easy entry
  - Reinforced
  - Eliel No-Sag Structure keeps gear in place
- Waist gripper keeps jacket in place
- Reflective trim for visibility
- UPF 50+ Sun Protection

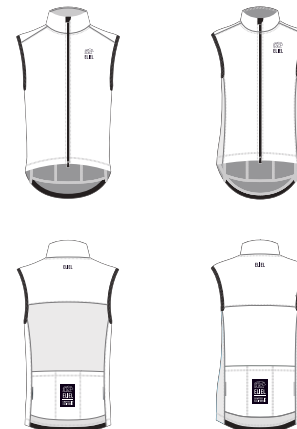
MVE16

WVE16

### WHY WE MADE THIS?

The Palomar Vest was made to be a multi-season all-rounder essential piece of gear for your complete apparel system. The mid weight 3 layer fabric construction includes a wind and water repellent stretch membrane that gives great protection from the elements, stretches for a great fit, and rolls up to fit in a jersey pocket. Outer pockets offer easy reach for essentials like a phone or nutrition for days when the vest stays on longer than the morning chill. Structured with room for layering makes this an essential timeless, versatile piece.

THERMAL PALOMAR VEST



- Eliel Relaxed Fit
- Triple-layered stretch fabric
  - Exterior fabric layer with durable water repellent finish
  - Ultra-thin membrane with high level of transpiration and resistance to water
  - Lightly brushed backing to trap and dissipate heat
- Mesh back panel to prevent overheating
- Two-way separating locking zipper for controlled venting in either direction
- Full length zipper flap provides additional weather protection
- Pockets:
  - Positioned for easy entry
  - Reinforced
  - Eliel No-Sag Structure keeps gear in place
- Waist gripper keeps vest in place
- Reflective trim for visibility
- UPF 50+ Sun Protection

## GIBALTAR JACKET

## MAJ02



## WAJ02



- Eliel Race Fit
- Triple-layered stretch fabric
  - Exterior fabric layer with durable water repellent finish
  - Ultra-thin membrane with high level of transpiration and resistance to water
  - Mesh backing allows airflow and assists in body temperature regulation
- Mesh back panel to prevent overheating
- Two-way separating locking zipper for controlled venting in either direction
- Waist gripper keeps jacket in place
- Reflective trim for visibility
- UPF 50+ Sun Protection

## GIBALTAR VEST

## MVE08



## WVE08



- Eliel Race Fit
- Triple-layered stretch fabric
  - Lightweight knit exterior with DWR finish repels water
  - Ultra-thin membrane with high level of transpiration and resistance to water
  - Mesh backing to trap and dissipate heat
- Mesh back panel for additional temperature regulation
- Two-way separating locking zipper for controlled venting in either direction
- Waist gripper keeps vest in place
- Reflective trim for visibility
- UPF 50+ Sun Protection

## WHY WE MADE THIS?

Gibraltar jacket was designed to be your go-to outerwear piece when you need a little extra coverage in early morning cool temps, chilly race days or a mountain descent. The ultra-light 3-layer fabric construction includes a wind and water repellent stretch membrane that offers real protection from the elements. This high stretch race fit includes minimal watt-wasting-flapping and rolls up into half a jersey pocket. Your perfect packable for every ride and unpredictable weather.

## GIBALTAR

## WHY WE MADE THIS?

Gibraltar Vest was designed to be your go-to layer when you need a little extra coverage in early morning cool temps, chilly race days or a mountain descent. The ultra light 3-layer fabric construction includes a wind and water repellent stretch membrane that offers real protection from the elements. This high stretch race fit includes minimal watt-wasting-flapping and rolls up into half a jersey pocket. Your perfect packable for every ride.

**OUTERWEAR** 2023  
CUSTOM







# 2023 THERMALS CUSTOM

# MARIN



## WHY WE MADE THIS?

The Race Fit Marin T2 Long Sleeve Jersey is the heavier weight sibling of the Marin T1. Same construction and details with a thicker and warmer fabric.

### THERMAL LONG SLEEVE MARIN T2 JERSEY

MJL13

WJL13



- Eliel Race Fit
- Brushed fleece is naturally moisture-wicking and provides excellent thermal regulation
- Full-length locking zipper for controlled venting
- Zipper garage at hem protects bibs
- Pockets:
  - Positioned and tapered for easy entry
  - Reinforced
  - Eliel No-Sag Structure keeps gear in place
  - Zip-pocket for securing valuables
- Waist gripper keeps jersey in place
- Reflective insets and trim for visibility
- UPF 50+ Sun Protection

### THERMAL LONG SLEEVE MARIN T1 JERSEY

MJL12

WJL12



- Eliel Race Fit
- Light brushed fleece is naturally moisture-wicking and provides excellent thermal regulation
- Full-length locking zipper for controlled venting
- Zipper garage at hem protects bibs
- Pockets:
  - Positioned and tapered for easy entry
  - Reinforced
  - Eliel No-Sag Structure keeps gear in place
  - Zip-pocket for securing valuables
- Waist gripper keeps jersey in place
- Reflective insets and trim for visibility
- UPF 50+ Sun Protection

## WHY WE MADE THIS?

The Race Fit Marin T1 Long Sleeve Jersey is a very versatile lighter weight thermal fabric with a brushed-back interior that is ideal for Spring and Fall in colder climates and 3 seasons in warmer climates.



**THERMALS** 2023  
CUSTOM





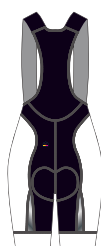


# 2023 THERMALS

## C U S T O M

MBC11

WBC11



T2 BIB SHORT

- High-density thermo-regulating fabric with Durable Water Repellant finish
  - protection against water spray and light rain
  - optimal mix of muscle support and comfort
  - high-opacity prevents see through
  - holds chamois in place to prevent chafing
- Anatomically cut to move with the body in riding position
- Mesh fleece waist and back upper
  - insulating and breathable for temperature regulation
- Laser-cut straps lay flat
- Silicone woven leg grippers
  - hypo-allergenic
  - breathable
  - non-slip
- 11" Inseam on medium, scaled up or down according to size
- 8" Inseam on medium, scaled according to size (WOMEN'S SKU)
- Reflective trim for visibility
- UPF 50+

### WHY WE MADE THIS?

Designed to keep you as comfortable as our classic bib styles but with more insulation for colder weather. Versatile as can be paired with knee or leg warmers to extend length and be able to remove if weather warms over a ride.

MBC12 (V2)

WBC12 (V2)



T2 BIB KNICKER

- High-density thermo-regulating fabric with Durable Water Repellant finish
  - protection against water spray and light rain
  - optimal mix of muscle support and comfort
  - high-opacity prevents see through
  - holds chamois in place to prevent chafing
- Anatomically cut to move with the body in riding position
- Mesh fleece waist and back upper
  - insulating and breathable for temperature regulation
- Laser-cut straps lay flat
- Knicker length
  - provides additional protection from cold and wind
  - eliminates need for separate knee warmers
- Reflective trim for visibility
- UPF 50+

### WHY WE MADE THIS?

Designed to keep you as comfortable as our classic bib styles but with more insulation for colder weather. Same as our Thermal Bib short but extended to the ankle for more coverage and a smooth transition without any additional grippers from warmers.

MBC12

WBC12



T2 BIB TIGHT

- High-density thermo-regulating fabric with Durable Water Repellant finish
  - protection against water spray and light rain
  - optimal mix of muscle support and comfort
  - high-opacity prevents see through
  - holds chamois in place to prevent chafing
- Anatomically cut to move with the body in riding position
- Mesh fleece waist and back upper
  - insulating and breathable for temperature regulation
- Laser-cut straps lay flat
- Full length legs with zipper-free stretch hem
  - provides additional protection from cold and wind
  - eliminates need for separate knee or leg warmers
  - easy to get in and out of your kit
- Reflective trim for visibility
- UPF 50+

### WHY WE MADE THIS?

Designed to keep you as comfortable as our classic bib styles but with more insulation for colder weather. Same as our Thermal Bib short but extended over the knee for more coverage and a smooth transition without any additional grippers from warmers.



**SUITS** 2023  
C U S T O M

[elielcycling.com](http://elielcycling.com)





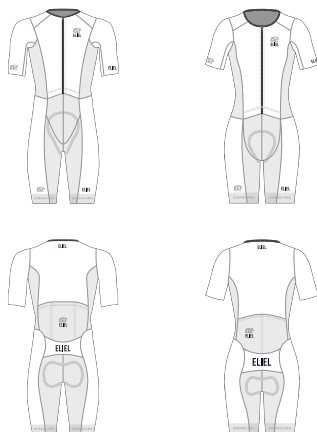


# 2023 SUITS

## C U S T O M

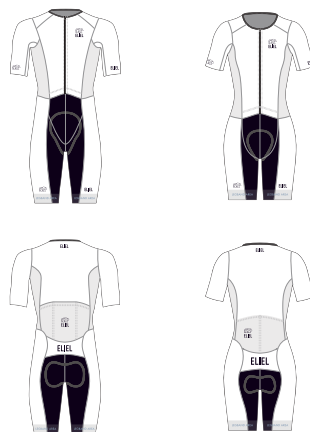
### MARSG05 (V2) WARSG05

FULL SUB  
SANTA ANA ROAD SUIT



### MARSG06 (V2) WARSG06

PRE-DYED INSEAM PANELS  
SANTA ANA ROAD SUIT



- Proprietary ElieL 3D woven fabric on sleeves and shoulders is wind-tunnel tested and aero-optimized
- ElieL Aero Fit
- Anatomically cut to move with the body in riding position
- Low-profile, tapered collar
- Longer length aerodynamic sleeves
- Laser-cut sleeve hem for comfort and weight reduction
- Full-length, separating, locking zipper for controlled venting
- Zipper garage at hem protects bibs
- Pockets:
  - Positioned and tapered for easy entry
  - Reinforced
- Silicone printed directly onto fabric
  - eliminates need for separate band
  - seamless, aero-dynamic fit
  - hypo-allergenic
  - breathable
  - non-slip
- 11" Inseam on medium, scaled according to size
- 9.5" Inseam on medium, scaled according to size (MEN'S V2)
- 8" Inseam on medium, scaled according to size (WOMEN'S SKU)
- Reflective trim for visibility
- 50+ UPF

## WHY WE MADE THIS?

The Santa Ana Road Suit is your best option for looking, feeling, and riding fast in and out of races. Offering a perfect blend of aerodynamics and functionality, this suit lets you ride long and hard in comfort.

SANTA ANA ROAD SUIT



# SANTA ANA SPEED SUIT

## MSSG05



## WSSG05



## MSSG06



## WSSG06



# PRE-DYED INSEAM PANELS SANTA ANA SPEED SUIT

- Eliel Aero Fit
- Collar-less neckline for comfort and decreased drag
- Proprietary Eliel 3D woven fabric on sleeves and shoulders is wind-tunnel tested and aero-optimized
- Longer length aerodynamic sleeves
- Laser-cut sleeve hem for comfort and weight reduction
- Full-length, locking zipper for controlled venting
- Silicone printed directly onto fabric
  - eliminates need for separate band
  - seamless, aero-dynamic fit
  - hypo-allergenic
  - breathable
  - non-slip
- 11" Inseam on medium, scaled according to size
- 8" Inseam on medium, scaled according to size (WOMEN'S SKU)
- Reflective trim for visibility
- 50+ UPF2

## WHY WE MADE THIS?

The Santa Ana Speed Suit will be your best friend come race day - sleek, aero, comfortable, and ready to rock and roll. This sleek, compressive, aerodynamic suit provides all the support you need for speed.

**SUITS** 2023  
C U S T O M I Z E D







# 2023 SUITS

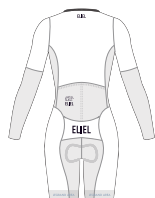
## C U S T O M

FULL SUB  
LS SANTA ANA ROAD SUIT

MARSLG05



WARSLG05



PRE-DYED INSEAM PANELS  
LS SANTA ANA ROAD SUIT

MARSLG06



WARSLG06



- Eliel Aero Fit
- Anatomically cut to move with the body in riding position
- Collar-less neckline for comfort and decreased drag
- Proprietary Eliel 3D woven fabric on sleeves and shoulders is wind-tunnel tested and aero-optimized
- Longer length aerodynamic sleeves
- Laser-cut sleeve hem for comfort and weight reduction
- Full-length, separating, locking zipper for controlled venting
- Zipper garage at hem protects bibs
- Pockets:
  - Positioned and tapered for easy entry
  - Reinforced
  - Eliel No-Sag Structure keeps gear in place
- Silicone printed directly onto fabric
  - eliminates need for separate band
  - seamless, aero-dynamic fit
  - hypo-allergenic
  - breathable
  - non-slip
- 11" Inseam on medium, scaled according to size
- 8" Inseam on medium, scaled according to size (WOMEN'S SKU)
- Reflective trim for visibility
- 50+ UPF

SANTA ANA ROAD SUIT

### WHY WE MADE THIS?

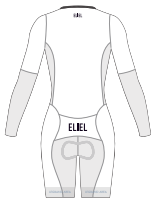
The Santa Ana Road Suit is your best option for looking, feeling, and riding fast in and out of races. Offering a perfect blend of aerodynamics and functionality, this suit lets you ride long and hard in comfort.

## FULL SUB LS SANTA ANA SPEED SUIT

### MSSSLG05



### WSSSLG05



## PRE-DYED INSEAM PANELS LS SANTA ANA SPEED SUIT

### MSSSLG06



### WSSSLG06



- Eliel Aero Fit
- Anatomically cut to move with the body in riding position
- Collar-less neckline for comfort and decreased drag
- Proprietary Eliel 3D woven fabric on sleeves and shoulders is wind-tunnel tested and aero-optimized
- Full length aerodynamic sleeves
- Full-length, locking zipper for controlled venting
- Silicone printed directly onto fabric
  - eliminates need for separate band
  - seamless, aero-dynamic fit
  - hypo-allergenic
  - breathable
  - non-slip
- 11" Inseam on medium, scaled according to size
- 8" Inseam on medium, scaled according to size (WOMEN'S SKU)
- Reflective trim for visibility
- 50+ UPF

## WHY WE MADE THIS?

The Santa Ana Speed Suit will be your best friend come race day - sleek, aero, comfortable, and ready to rock and roll. This sleek, compressive, aerodynamic suit provides all the support you need for speed.

# SANTA ANA SPEED SUIT

# SUITS

CUSTOM 2023







# 2023 SUITS

## C U S T O M

### FULL SUB SS PRESIDIO CROSS SUIT

#### MCS01



#### WCS01



- Eliel Aero Fit
- Anatomically cut to move with the body in riding position
- Tailored high collar for extra protection from the elements
- Longer length aerodynamic sleeves
- Full-length, locking zipper for controlled venting
- Pockets:
  - Positioned for easy entry
  - Reinforced
  - Eliel No-Sag Structure keeps gear in place
- Silicone woven leg grippers
  - hypo-allergenic
  - breathable
  - non-slip
- 11" Inseam on medium, scaled according to size
- 8" Inseam on medium, scaled according to size (WOMEN'S SKU)
- Reflective trim for visibility
- 50+ UPF

### PRE-DYED INSEAM PANELS LS PRESIDIO CROSS SUIT

#### MCSL01



#### WCSL01



- Eliel Aero Fit
- Anatomically cut to move with the body in riding position
- Tailored high collar for extra protection from the elements
- Full length aerodynamic sleeves
- Full-length, locking zipper for controlled venting
- Pockets:
  - Positioned for easy entry
  - Reinforced
  - Eliel No-Sag Structure keeps gear in place
- Silicone woven leg grippers
  - hypo-allergenic
  - breathable
  - non-slip
- 11" Inseam on medium, scaled according to size
- 8" Inseam on medium, scaled according to size (WOMEN'S SKU)
- Reflective trim for visibility
- 50+ UPF

## WHY WE MADE THIS?

Cross isn't coming, it's here with our Presidio Cross Suit! From grabbing hand-ups to sloshing through mud pits, you'll be the best dressed in the Presidio Cross Suit to take on the most fun cycling discipline. Designed specifically for the challenges of cyclocross to allow for movements of riding, dismounting, shouldering, and running with your bike.

PRESIDIO



**FULL SUB**  
**LS T2 PRESIDIO CROSS SUIT**

**MCSLT01**



**WCSLT01**



- Eliel Aero Fit
- Anatomically cut to move with the body in riding position
- Tailored high collar for extra protection from the elements
- Full length aerodynamic sleeves
- Full-length, locking zipper for controlled venting
- Pockets:
  - Positioned for easy entry
  - Reinforced
  - Eliel No-Sag Structure keeps gear in place
- Silicone woven leg grippers
  - hypo-allergenic
  - breathable
  - non-slip
- 11" Inseam on medium, scaled according to size
- 8" Inseam on medium, scaled according to size (WOMEN'S SKU)
- Reflective trim for visibility
- 50+ UPF

# PRESIDIO T2

## WHY WE MADE THIS?

Cross isn't coming, it's here with our Presidio Cross Suit! From grabbing hand-ups to sloshing through mud pits, you'll be the best dressed in the Presidio Cross Suit to take on the most fun cycling discipline. Designed specifically for the challenges of cyclocross to allow for movements of riding, dismounting, shouldering, and running with your bike.

**SUITS** 2023  
C U S T O M

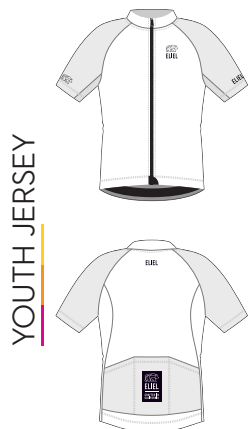






# 2023 YOUTH C U S T O M

## YJS06

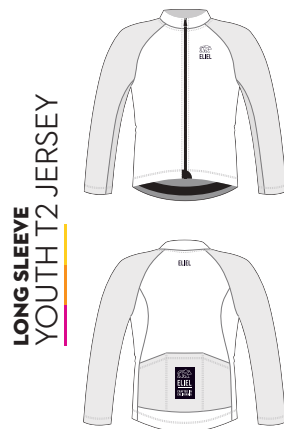


- Low-profile collar
- Full-length locking zipper for controlled venting
- Zipper garage at hem protects bibs
- Pockets:
  - Positioned and tapered for easy entry
  - Reinforced
  - ElieL No-Sag Structure keeps gear in place
- Waist gripper keeps jersey in place
- UPF 30+ Sun Protection

### WHY WE MADE THIS?

Based on the ElieL Rincon Jersey, this jersey is the gateway into cycling for our youth teams.

## YJL05

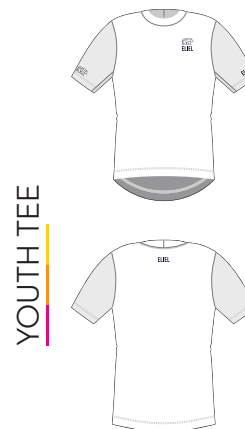


- Traditional collar for warmth
- Full-length locking zipper for controlled venting
- Zipper garage at hem protects bibs
- Pockets:
  - Tapered for easy entry
  - Reinforced
  - ElieL No-Sag Structure keeps gear in place
  - Zip-pocket for securing valuables
- Waist gripper keeps jersey in place
- UPF 50+ Sun Protection

### WHY WE MADE THIS?

Based on the ElieL Marin T2 LS Jersey, this provides midweight thermal protection that is ideal for Spring, Fall and colder weather rides.

## YJS03



- Minimal seams to prevent
- Traditional crew neck styling

### WHY WE MADE THIS?

Versatile short-sleeve tee for road, dirt and trails.

## YBS02



- High-density compressive fabric
  - optimal mix of muscle support and comfort
  - high-opacity prevents see through
  - holds chamois in place to prevent chafing
- Anatomically cut to move with the body in riding position
- Mesh back upper
  - heat dissipation
- Silicone woven leg grippers
  - hypo-allergenic
  - breathable
  - non-slip
- 8" Inseam

### Chamois

- Smooth surface and gradual areas of transition
- Slim profile for great freedom of movement
- Sustainable fabric with carbonium thread
  - Ultra-wicking
  - Natural antistatic and bacteriostatic properties

### WHY WE MADE THIS?

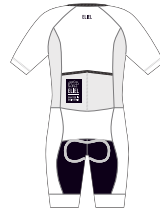
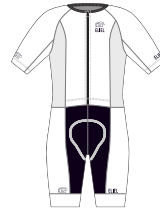
The bib that launched ElieL is now offered in our Youth Cycling Collection, carefully crafted and updated to fit our youth riders. These are designed to work beautifully in any riding condition, for all day comfort or short effort muscle support.

**YSH01****YOUTH CYCLING SHORT**

- High-density compressive fabric
    - optimal mix of muscle support and comfort
    - high-opacity prevents see through
    - holds chamois in place to prevent chafing
  - Anatomically cut to move with the body in riding position
  - Silicone woven leg grippers
    - hypo-allergenic
    - breathable
    - non-slip
  - 8" Inseam
- Chamois
- Smooth surface and gradual areas of transition
  - Slim profile for great freedom of movement
  - Sustainable fabric with carbonium thread
    - Ultra-wicking
    - Natural antistatic and bacteriostatic properties

**WHY WE MADE THIS?**

Derived from the bib that launched Eliel, our Youth Cycle Short is carefully crafted and updated to fit our youth riders. These are designed to work beautifully in any riding condition, for all day comfort or short effort muscle support.

**YARSO1****YOUTH SUIT**

- High-density compressive fabric
    - optimal mix of muscle support and comfort
    - high-opacity prevents see through
    - holds chamois in place to prevent chafing
  - Low neckline for comfort
  - Separating zipper with semi-auto locking puller for controlled venting
  - Anatomically cut to move with the body in riding position
  - Silicone woven leg grippers
    - hypo-allergenic
    - breathable
    - non-slip
  - 8" Inseam
- Chamois
- Smooth surface and gradual areas of transition
  - Slim profile for great freedom of movement
  - Sustainable fabric with carbonium thread
    - Ultra-wicking
    - Natural antistatic and bacteriostatic properties

**WHY WE MADE THIS?**

Derived from the Eliel Road Suit, our Youth Road Suit offers the same features and function. This is carefully crafted and updated to fit our youth riders, designed to work beautifully in any riding condition, for all day comfort or short effort muscle support.

**YVE07****YOUTH VEST**

- Full-length two-way separating zipper for controlled venting in either direction
- Dual back pockets
- Breathable mesh back for comfort
- Waist gripper keeps vest in place
- UPF 50+ Sun Protection

**WHY WE MADE THIS?**

We started with our best selling Palomar Vest and carefully crafted and updated it for our youth riders.

**YOUTH** 2023  
C U S T O M







# 2023 ACCESSORIES

C U S T O M



**MBLO2****WBL01****SLEEVELESS  
ZUMA BASE LAYER**

- Close to body fit lays flat and won't bunch
- Lightweight mesh fabric allows airflow and provides moisture-wicking to assist in body temperature regulation

**WHY WE  
MADE THIS?**

Ultra light mesh helps regulate body temperature. Can be used under a wide range of jerseys for moisture management and comfort.

**MBLS02****WBL01****SHORTSLEEVE  
ZUMA BASE LAYER**

- Close to body fit lays flat and won't bunch
- Lightweight mesh fabric allows airflow and provides moisture-wicking to assist in body temperature regulation

**WHY WE  
MADE THIS?**

Ultra light mesh helps regulate body temperature. Can be used under a wide range of jerseys for moisture management and comfort. Short sleeve option depending on preference.

**WBR04****CROSSBACK BRA**

- Wide, soft straps with classic crossback layers lay flat against the body and stay securely in place with out digging in.
- Soft binding around front armholes and neckline protects against chafing.
- Wide, soft bustband lays flat against the skin.
- Provides moderate support for cup sizes ranging from A-C.
- UPF 50+ Sun Protection

**WHY WE  
MADE THIS?**

The Eliel signature cross-back flat strap bra was designed for moderate support and maximum comfort for any distance ride on any surface: road, gravel or dirt. This essential first layer won't dig or chafe in sensitive areas allowing for a smooth ride every time you roll out.

# ACCESSORIES

C U S T O M 2023





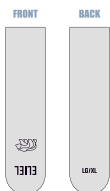


# 2023 ACCESSORIES

## C U S T O M

### ULS

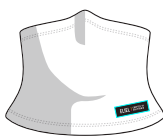
#### UNISEX SOCK



- 5" tall cuff

### UNW02

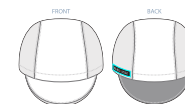
#### NECK GATIER



- Made with soft, high-quality fabric with ColdBlack technology to manage temperature
- Provides reliable protection from the sun's rays
- Flat seams for a chafeless feeling
- Folds easily for storage in a pocket

### UCC05

#### CYCLING CAP



- Crafted from versatile, lightweight and breathable stretch woven fabric
- Durable Water Repellent (DWR) for shedding rain
- Soft elastic with antibacterial finish
- Available in two sizes, S/M + L/XL
- 50+ UPF Sun Protection

### WHY WE MADE THIS?

Eliel socks are created with performance in mind - thin and breathable with a reinforced heel and toe, they'll keep you comfortable and stylish all day.

### WHY WE MADE THIS?

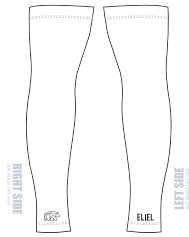
Our neck warmer is an essential part of any cool-weather riding outfit. A soft fleece lining offers insulation from those cold, face-numbing rollouts and keeps your neck from the misery of icy wind.

### WHY WE MADE THIS?

A great lightweight traditional style cycling cap. Great for wearing under a helmet for extra warmth, wind and/or sun protection.

## UAC01

## ARM COOLER



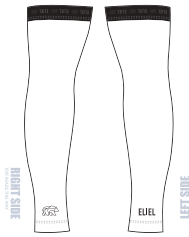
- Handcrafted from premium Italian fabric to keep your skin cool
- UPF 50+ for maximum sun protection
- Contoured cut for perfect fit
- Lightweight, hypoallergenic silicone gripper to prevent slipping

### WHY WE MADE THIS?

Keep your cool and hide from the sun's harmful rays! Our arm coolers are crafted from high-performance Italian fabrics and finished off with premium silicone grippers to prevent slipping.

## UAW09

## ARM WARMER



- Light brushed fleece is naturally moisture-wicking and provides excellent thermal regulation
- Contoured cut for comfort and perfect fit
- Flat, lightweight, hypoallergenic silicone gripper to prevent slipping at bicep
- UPF 50+ Sun Protection

### WHY WE MADE THIS?

The Classic Arm Warmers are a versatile way to adapt your favorite jersey for comfortable wearing on cooler days. Crafted from premium textured fabric, these warmers will stay in place and keep arms legs warm throughout the ride.

## UKW09

## KNEE WARMER



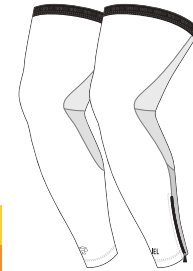
- Light brushed fleece is naturally moisture-wicking and provides excellent thermal regulation
- Contoured cut for comfort and perfect fit
- Lightweight, hypoallergenic silicone gripper to prevent slipping at thigh and calf
- UPF 50+ Sun Protection

### WHY WE MADE THIS?

The Classic Knee Warmers are a versatile way to adapt your favorite jersey for comfortable wearing on cooler days. Crafted from premium textured fabric, these warmers will stay in place and keep arms legs warm throughout the ride.

## ULW09

## LEG WARMER



- Light brushed fleece is naturally moisture-wicking and provides excellent thermal regulation
- Contoured cut for comfort and perfect fit
- Lightweight, hypoallergenic silicone gripper to prevent slipping at thigh
- Zippered ankle openings for ease
- UPF 50+ Sun Protection

### WHY WE MADE THIS?

The Classic Leg Warmers allow you to adapt your favorite bibs for comfortable wearing on cooler days. Crafted from premium textured fabric, these warmers will stay in place and keep your legs warm throughout the ride.

# ACCESSORIES

C U S T O M 2023







# ELIEL

CRAFTED IN CALIFORNIA