

Peter Barski

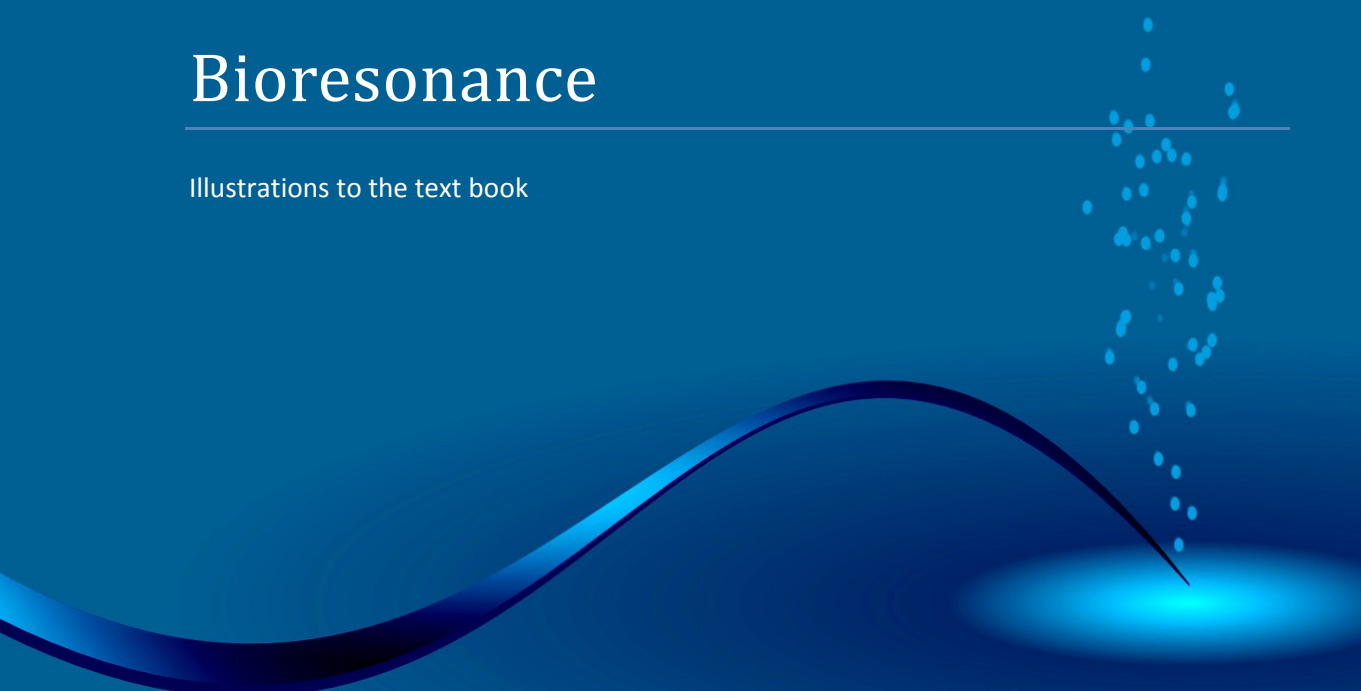
Introduction to

Electroacupuncture According to Dr. Voll (EAV)

and

Bioresonance

Illustrations to the text book



FOR HEALTH CARE PROFESSIONALS
Published by Holimed GmbH, Germany

ISBN 978-3-00-038973-3

© Copyright 1995–2012 Holimed Privatinstitut fuer holistische Medizinsysteme GmbH, Germany.
All rights reserved.

Holimed biocheck[®], RemiWave Pro[®], and bioswing[®] are internationally registered trademarks.
WaveMaker and WaveMaker Pro are trademarks of Great Life Technology, Inc., USA.
Printed in Germany.

Cover: © *ascain64 - Fotolia.com*

Edition July 2012

First German edition in print: September 2003: Third edition with minor revisions and English translation by Dipl. Psych. Jonathan Harrow: May 2010 – July 2012.

Although this seminar transcription has been compiled with the greatest of care, factual errors cannot be ruled out completely. Only the latest current edition is binding. If in doubt, please check with Holimed to ensure you have the latest edition.

All information and data in these documents may be changed without prior notice. This seminar presents information on the basic principles of working with EAV and bioresonance. Any application guidelines should be viewed as suggestions based on our own prior observations; they are not binding. For detailed application guidelines, please refer to the relevant specialist literature.

Apart from ensuring the printing quality, Holimed accepts no responsibility and liability for these documents.

Holimed makes no (implicit) warranties for either merchantability or fitness for a particular purpose.

Holimed also accepts no responsibility for any errors in the present document.

No responsibility is taken for incidental or consequential damages related to the delivery of, services rendered with, or use of this material.

This document and the accompanying illustrations are protected by international copyrights. No parts of these documents or illustrations may be reproduced, stored in a retrieval system, or transmitted in any form or by any means be it electrical or mechanical without the explicit prior permission in writing of the Holimed Privatinstitut fuer holistische Medizinsysteme GmbH (Holimed).

Publications of any nature and the organization of seminars derived from the content of this work require the prior permission in writing of Holimed. The same applies for any presentation of the seminar in its original form.

Publisher:

Holimed Privatinstitut fuer holistische Medizinsysteme GmbH

Schenkendorfstr. 12

90455 Nuernberg, Germany

Telephone ++49 - 9129 - 26855;

Internet: <http://www.holimed.com>;

E-mail: info@holimed.de

Safety notice: Please read carefully

Please pay attention to the safety notices and advice in the ***bioswing, RemiWave Pro, WaveMaker, WaveMaker Pro*** and ***biocheck*** operation instructions manuals if you use these instruments.

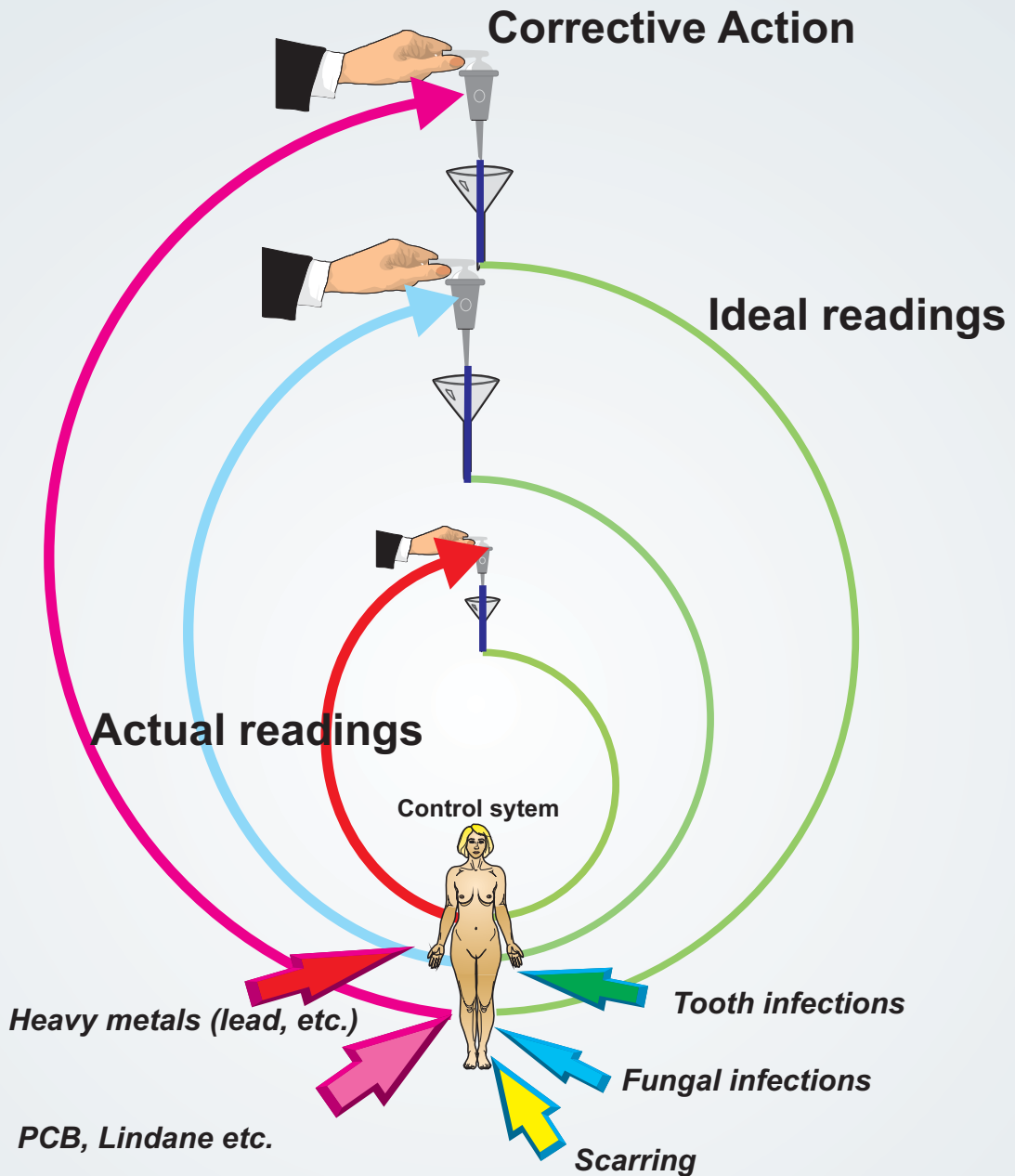
In line with the latest CE regulations of the European Union and their national ratifications, we wish to point out that electroacupuncture according to Dr. Voll and bioresonance in general currently do not have the status of "recognized methods of diagnosis and treatment." According to current regulations, *bioswing, biocheck, WaveMaker, WaveMaker Pro* and *RemiWave Pro* are not medicine products but systems of alternative medicine for restoring energetic balance and particularly acupuncture nodes.

The EAV meridian names originate from experiences acquired through energetic tests. Like in the Traditional Chinese Medicine (TCM), the meridians were not proven scientifically

All information on this presentation is related to energetic treatment.

Any form of energetic treatment does IN NO CASE replace traditional MEDICAL TREATMENT.

A stable organism can handle moderate imbalances by itself



Treatment methods

1. Using invasive procedures

Surgery, neural therapy
photodynamic therapy,
acupuncture

2. Using substances

Chemical medication,
phytotherapy,
taking minerals

3. Using energy

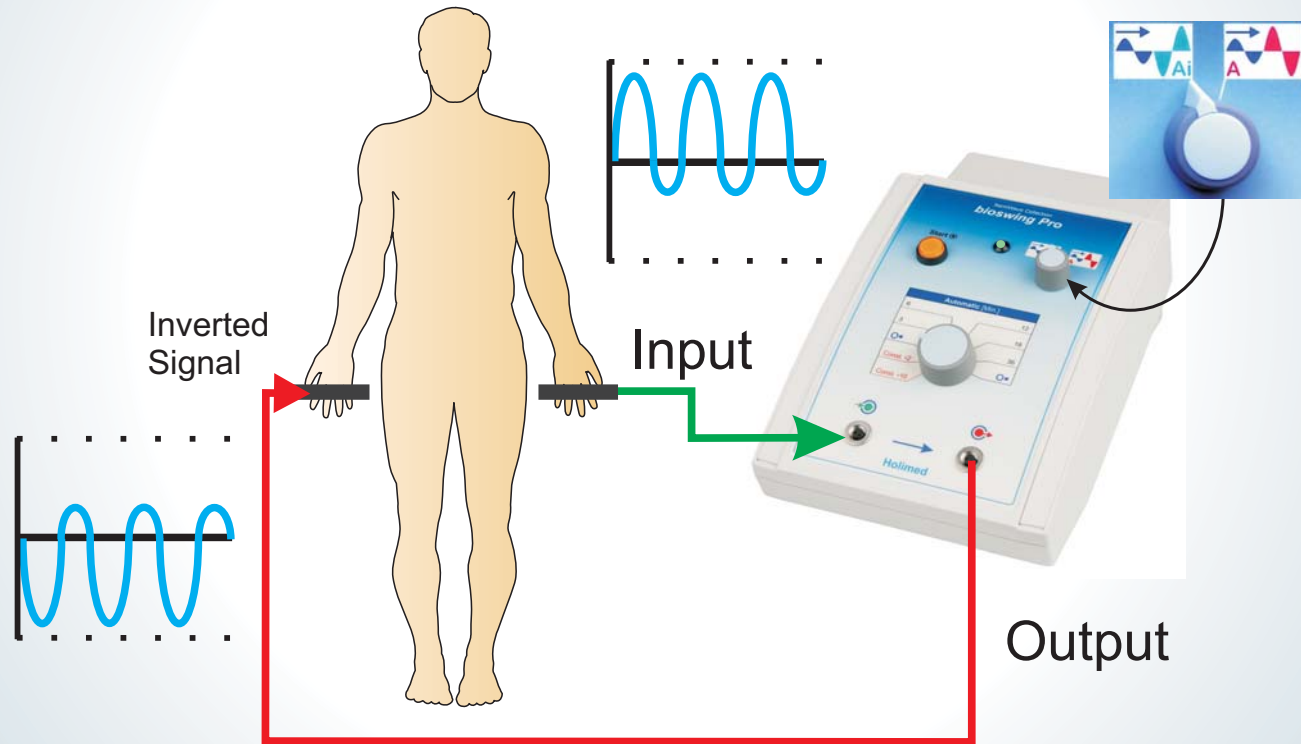
Heat, vibration, sound, electrical
acoustics, galvanic current,
electromagnetic waves

4. Using information (energetic methods)

High-potency homeopathy, Bach
flower remedies, gemstone
therapy, bioresonance/EAV

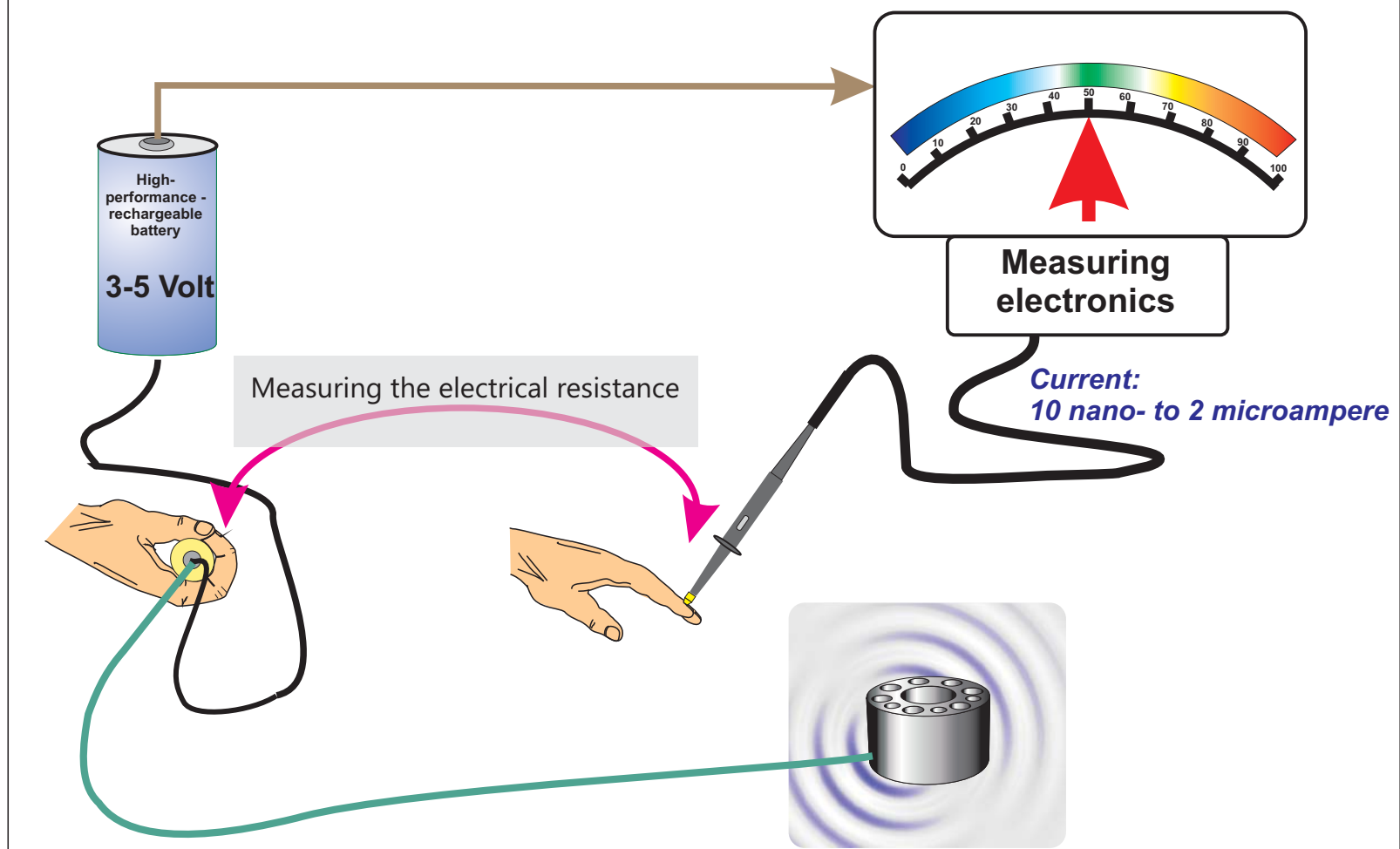
Basic Regulation / Balance

uses the endogene bioresonance = direct application in **Inverse (Ai)**



The signals displayed here are for illustrative purposes only.

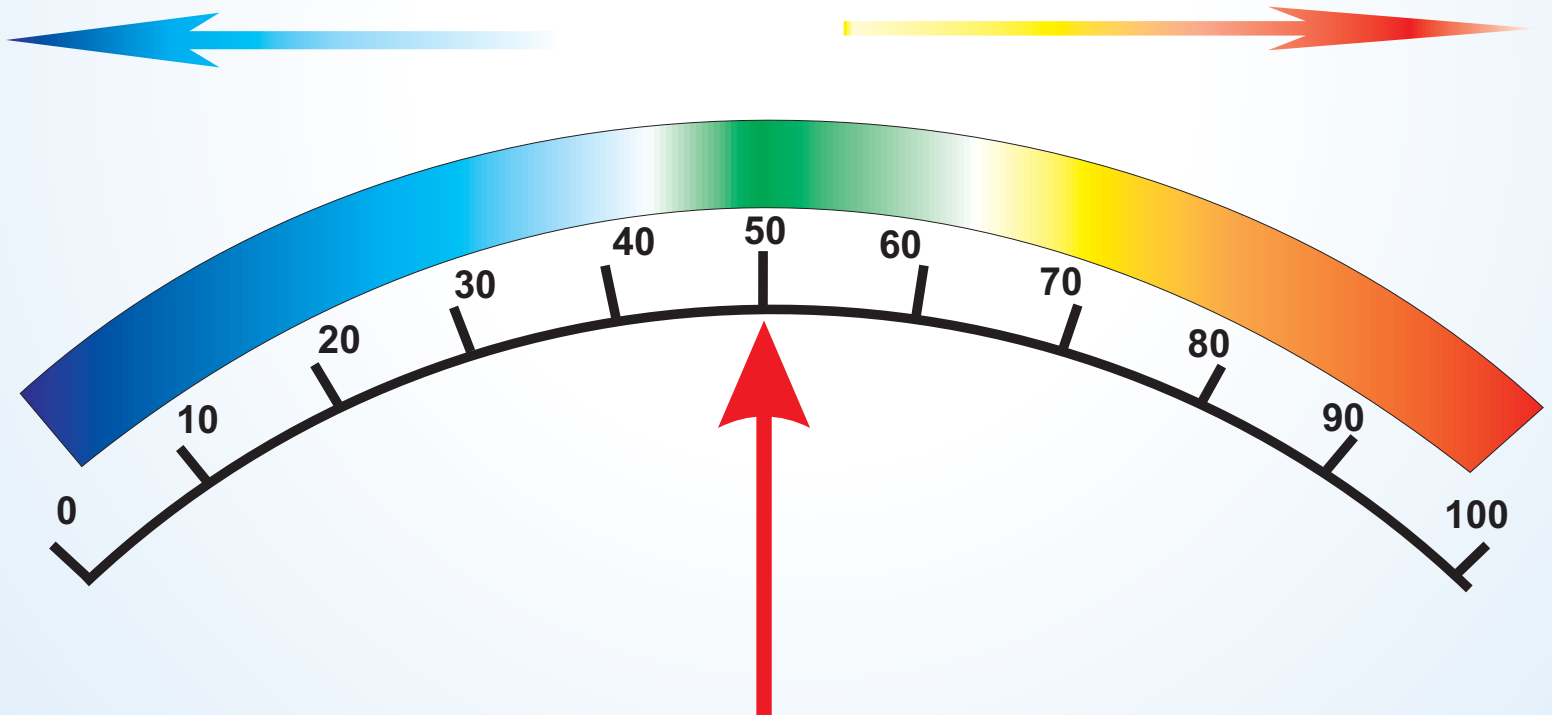
Principles of EAV



The scale defined by Dr. Voll

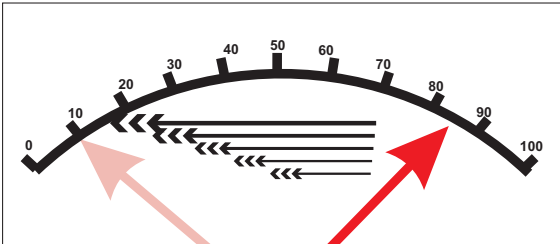
chronic, degenerative
indication

acute, inflammatory
indication

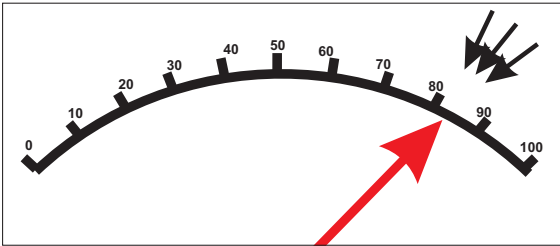


Priorities ...

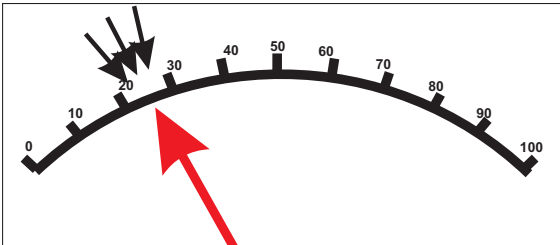
I



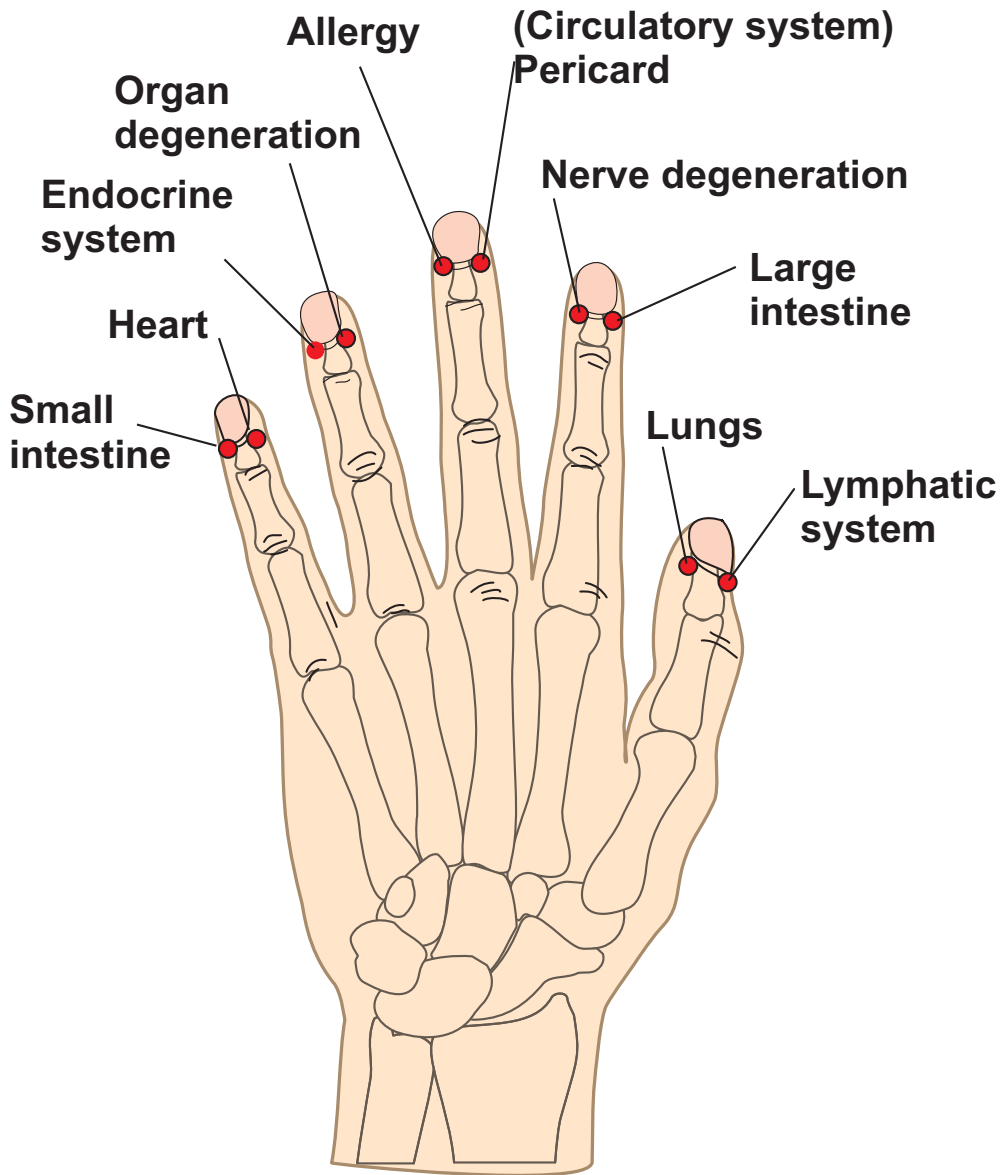
II



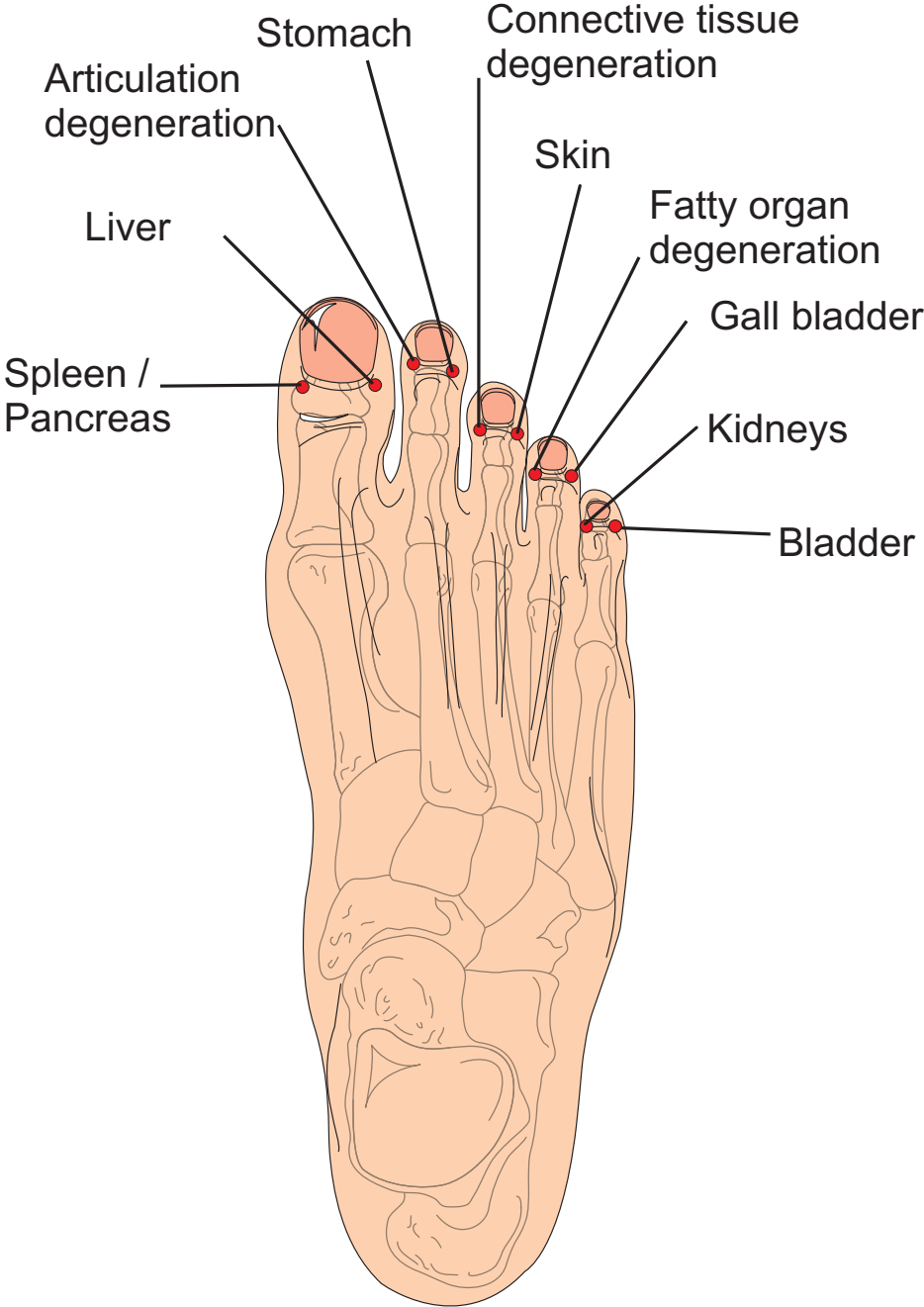
III



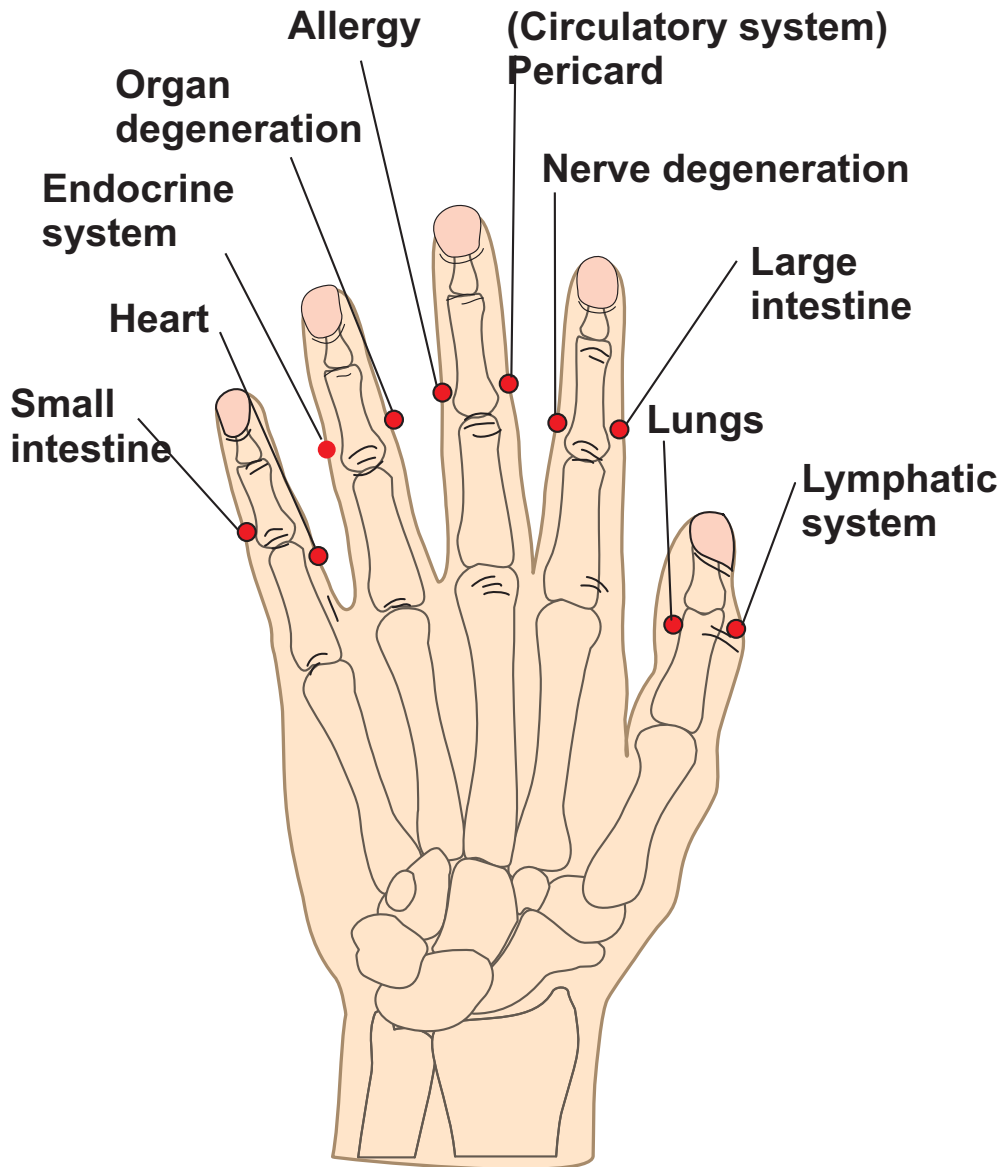
The test nodes (hands)



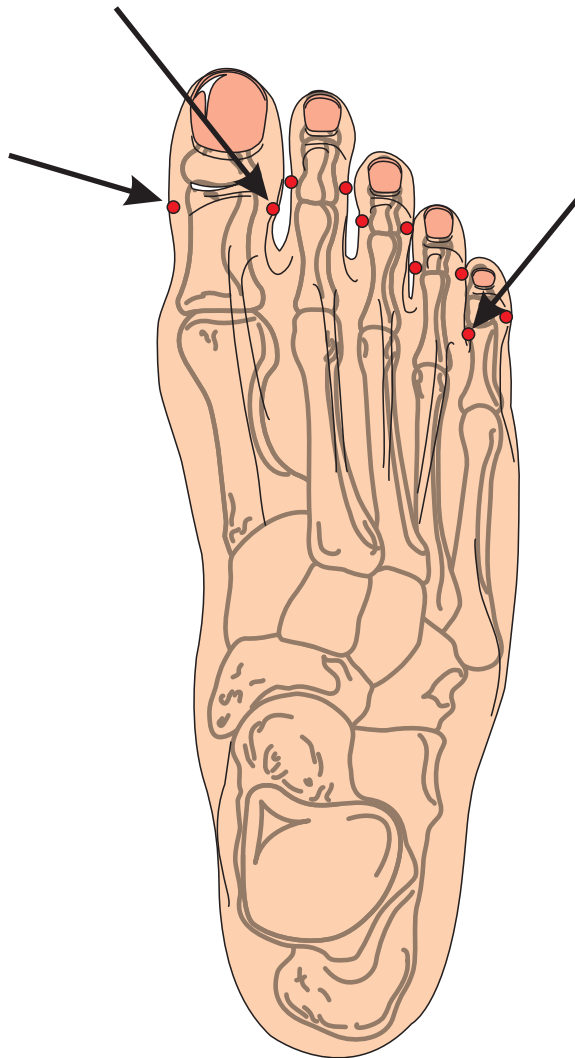
The test nodes (feet)



The verification nodes (hands)

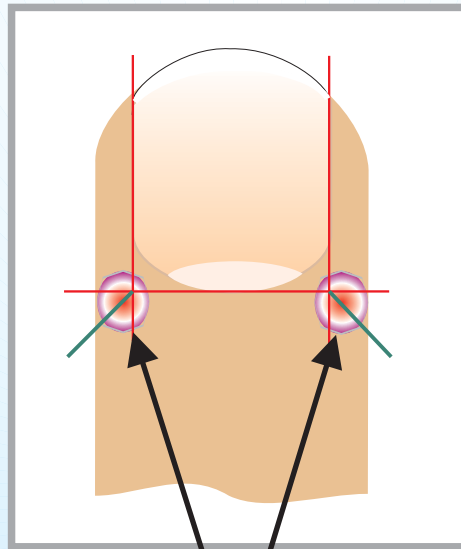


The verification nodes (feet)

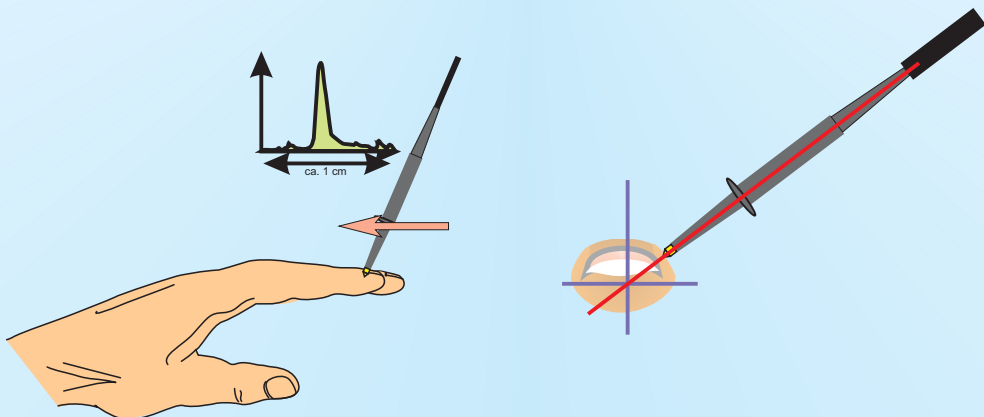


How do we perform our measurements?

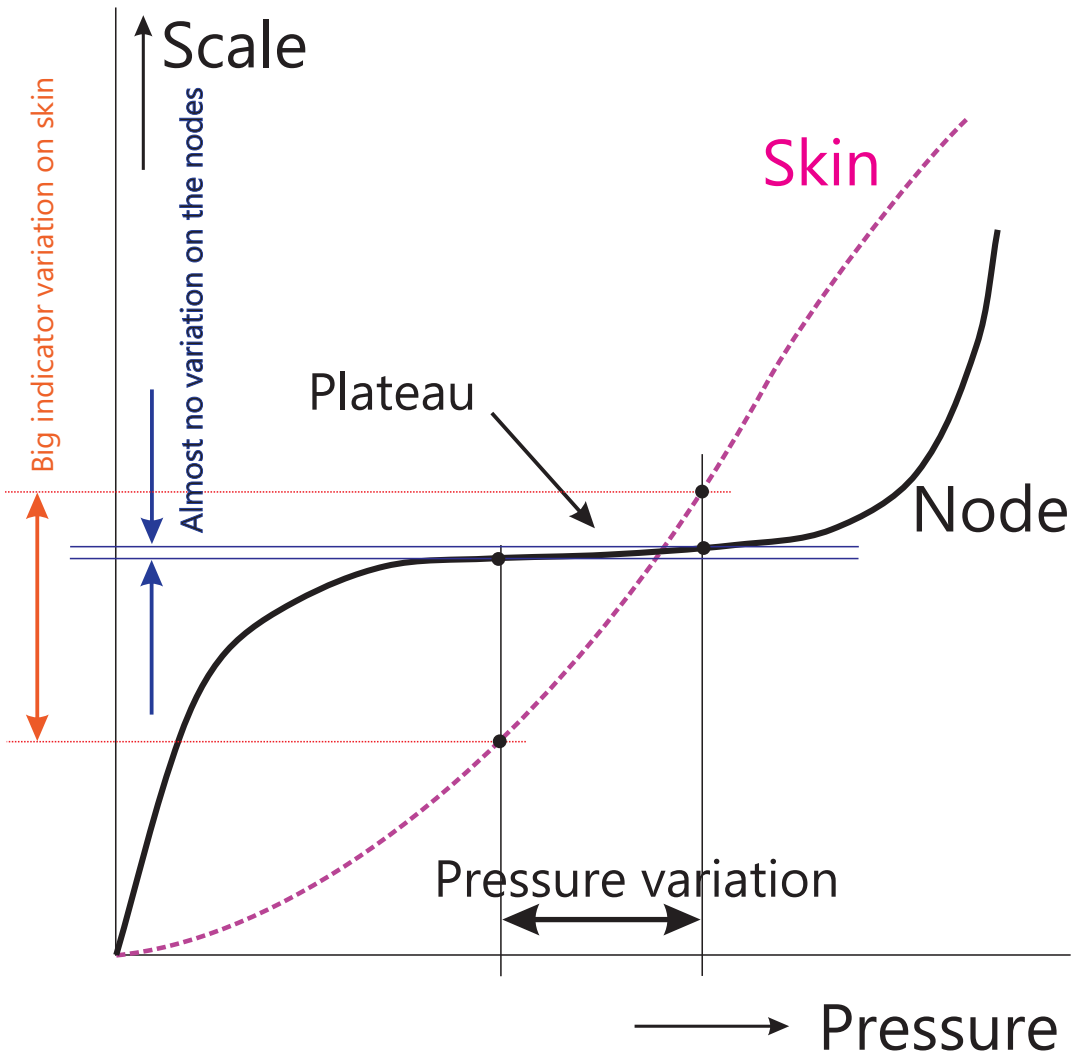
Forget those 'golden rules'!
The nodes are rather individual.



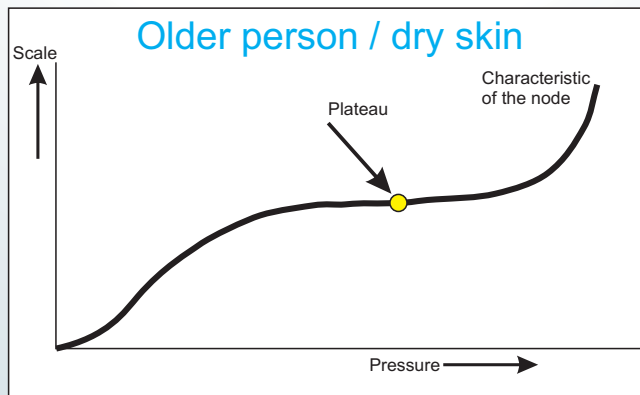
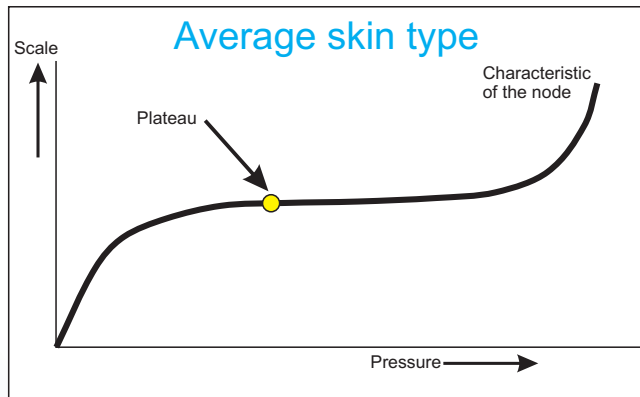
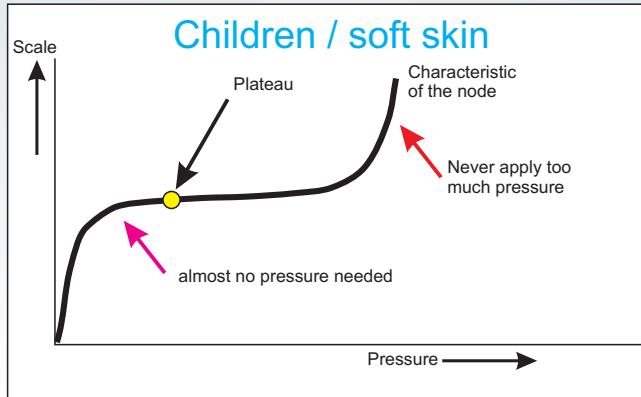
Area of the highest probability.



Skin or Node?

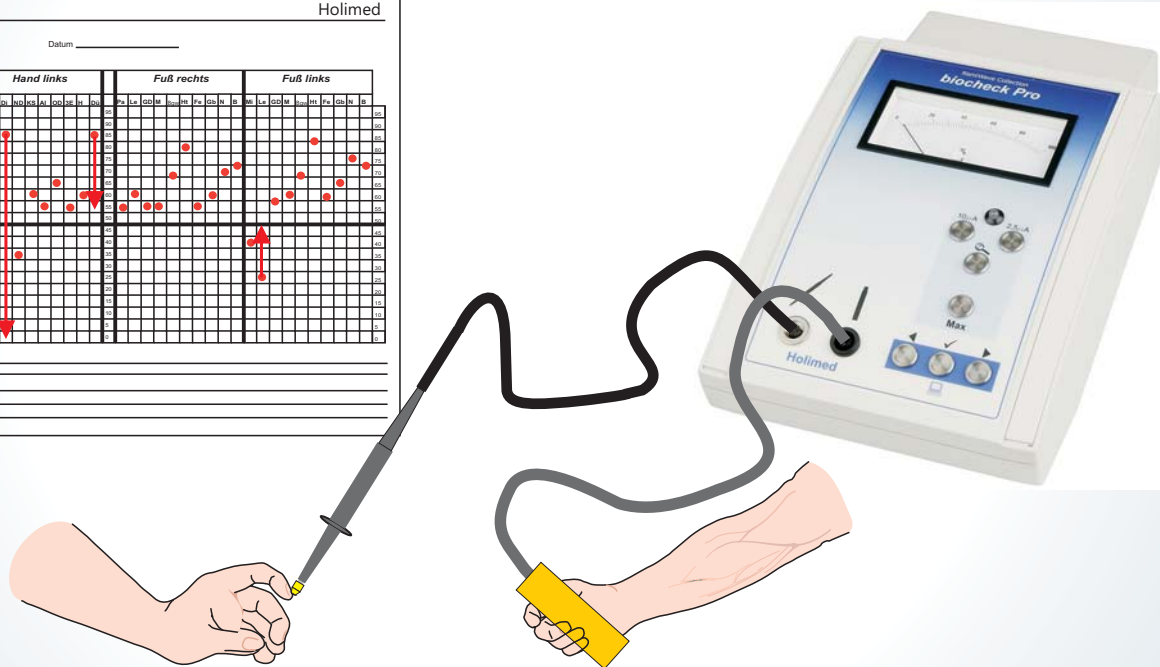
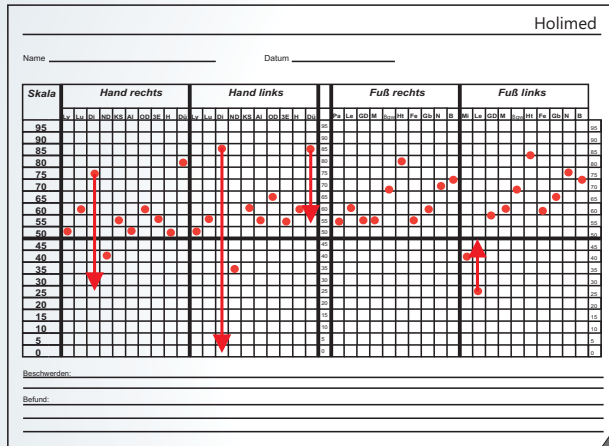


Skin or Node?

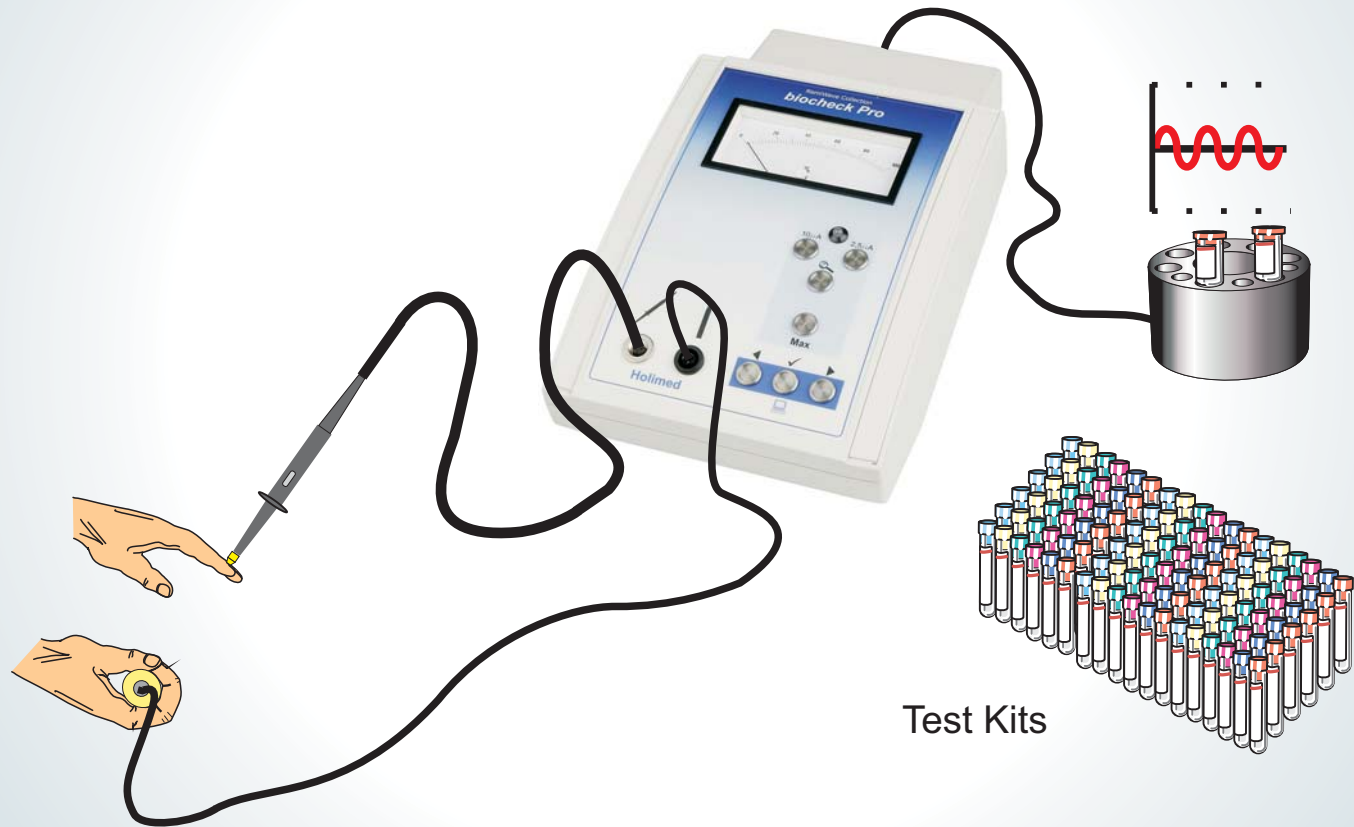


● = Recommended pressure

Initial Measurement

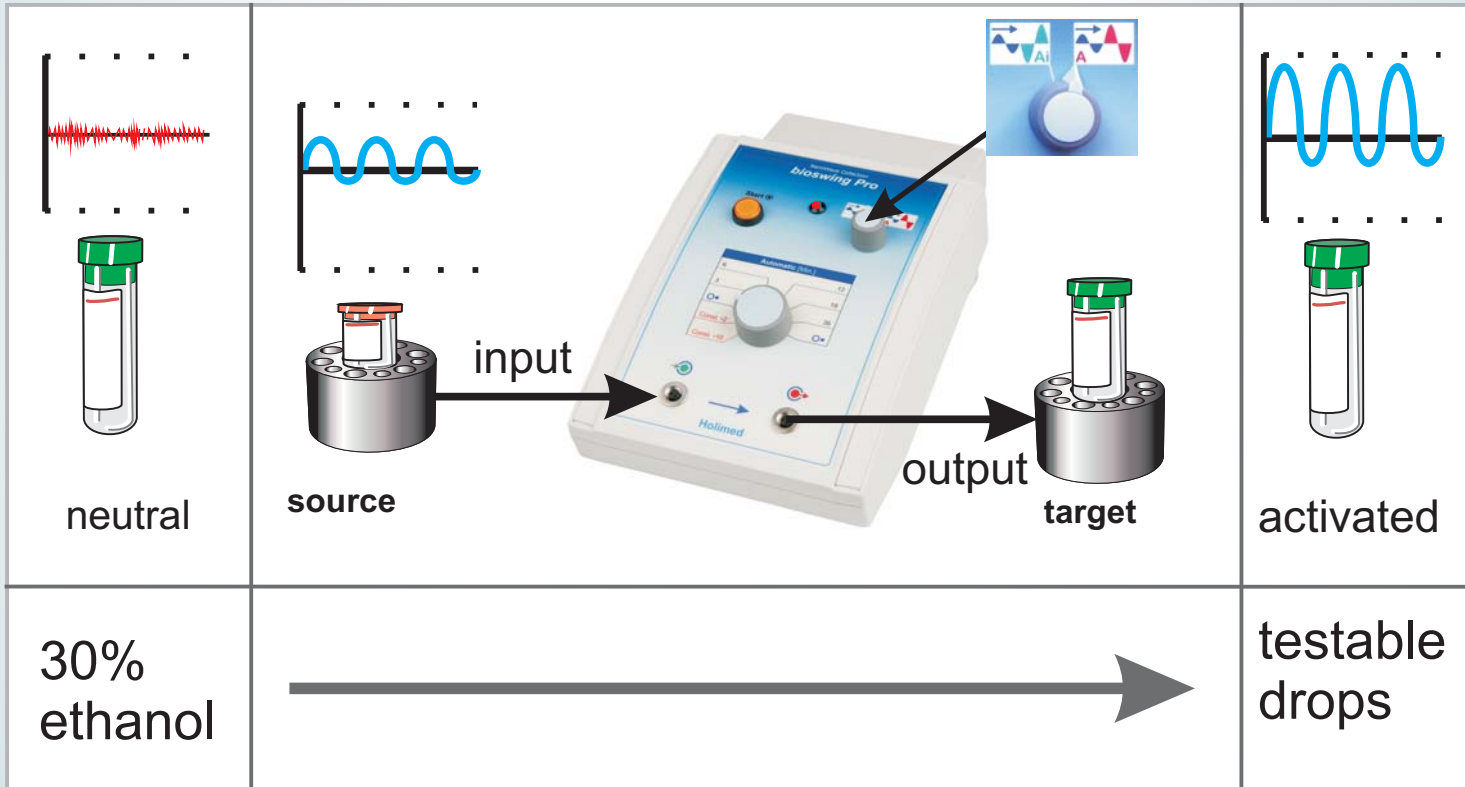


The Resonance Test



The shown signals serve only the illustration.

How to Prepare Drops

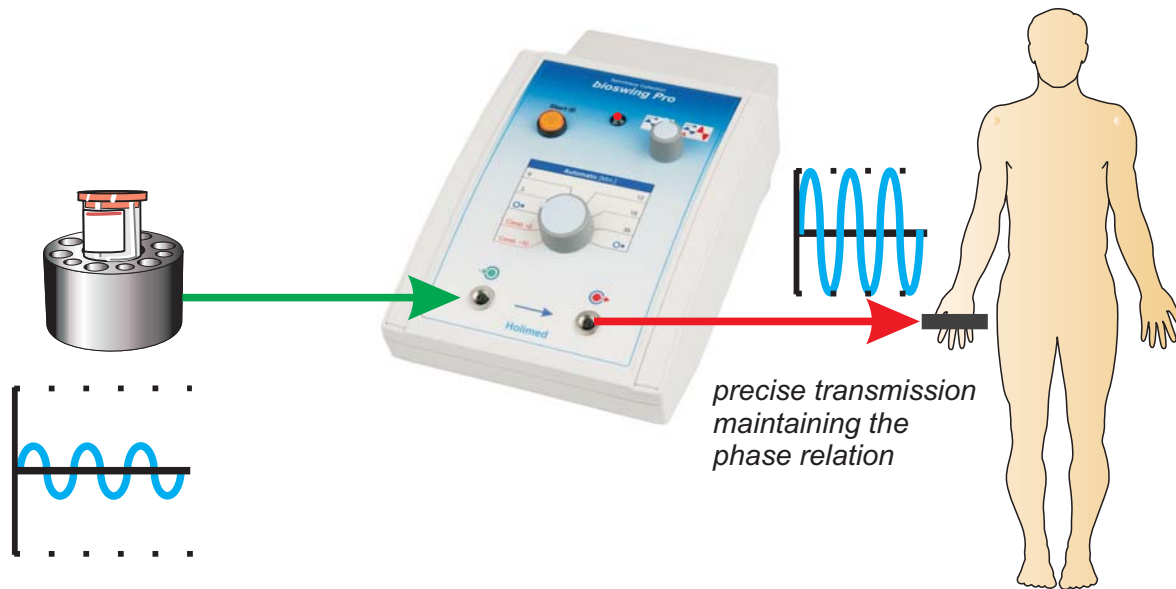


It works the same way for A and Ai transfer. Just switch the phase operation.

The signals shown serve only the illustration.

Apply Information in non-inverse (A)

Active transmission using **bioswing Pro**



The shown signals serve only the illustration.

Nr.	Basic regulations
100	Basic regulation, general program.
101	Basic regulation, yang condition or teenager - acute.
102	Basic regulation, yang condition or teenager - chronically degenerative.
103	Basic regulation, yin condition or older person -- acute.
104	Basic regulation, yin condition or older person -- chronically degenerative.
120	Basic regulation at less than conductance = 38.
121	Basic regulation at conductance 38-58.
122	Basic regulation at conductance 58-69.
123	Basic regulation at conductance 69-78.
124	Basic regulation at conductance 78-81.
125	Basic regulation at conductance 81-89.
126	Basic regulation at conductance 89-100.
130	Basic regulation for those with a normal energy.
131	Basic regulation, yang condition.
132	Basic regulation, yin condition.

Nr.	Meridians hands
200	Lymph meridian acute
201	Lymph meridian chronic/degenerative
210	Lung meridian acute
211	Lung meridian chronic/degenerative
220	Large intestine meridian acute
221	Large intestine meridian chronic/degenerative
230	Nerves degeneration - meridian acute
231	Nerves degeneration - meridian chronic/degenerative
240	Pericardium meridian (CS) acute
241	Pericardium meridian (CS) chronic/degenerative
250	Allergy meridian acute
251	Allergy meridian chronic/degenerative
260	Metabolism (OD) meridian acute
261	Metabolism (OD) meridian chronic/degenerative
270	Endocrine system (3 E) meridian acute
271	Endocrine system (3 E) meridian chronic/degenerative
280	Heart meridian acute
281	Heart meridian chronic/degenerative
290	Small intestine meridian acute
291	Small intestine meridian chronic/degenerative

Nr.	Meridians feet
300	Spleen/pancreas meridian acute
301	Spleen/pancreas meridian chronic/degenerative
310	Liver meridian acute
311	Liver meridian chronic/degenerative
320	Joint (Jt) meridian acute

321	Joint (Jt) chronic/degenerative
330	Stomach meridian acute
331	Stomach meridian chronic/degenerative
340	Connective tissue meridian acute
341	Connective tissue meridian chronic/degenerative
350	Skin meridian acute
351	Skin meridian chronic/degenerative
360	Fatty Degeneration meridian acute
361	Fatty Degeneration meridian chronic/degenerative
370	Gallbladder meridian acute
371	Gallbladder meridian chronic/degenerative
380	Kidney meridian acute
381	Kidney meridian chronic/degenerative
390	Bladder meridian acute
391	Bladder meridian chronic/degenerative

Nr.	Resonance-test/Information transfer
191	Inverse (Debug) test with ampoules.
192	True phase (upgrade) test with ampoules.
197	Inverse (Debug) application/Information transfer of ampoules.
198	True phase (upgrade) application/Information transfer of ampoules.

Nr.	Infections/defense
428	General thymus activation
1500	Common cold (option 1)
421	Common cold (option 2)
500	Common cold (option 3)
540	Cough, especially dry cough
950	Infections -- support of the immune defence (option 1)
20101	Bronchitis, debugging support for resolving
20102	Intermittent acute fever
20103	Fever, debugging support for resolving
20104	Common cold, also sinusitis
20105	Urinary tract infection
20106	Intestinal infections
20107	Debugging with nosodes
20108	Viruses, suspicion on RNA
20109	Mycoses, debugging support for resolving
20202	Intestine, residual infection
20902	Chronic ear infection

Nr.	Stomach
22001	Stomach, degenerative changes after infections
22002	Gastric neurosis, nervous stomach
22003	Stomach, degenerative change
22004	Stomach, disturbed secretion
22005	Stomach, hyperacidity
22006	Stomach, pyloric tunnel syndrome

Nr.	Intestinal system (Digestion, excretion, intestines)
441	Intestines 1, disruption of the energy due to infection or infection residue
461	Intestines 2, ulcers, infections of the intestinal mucous membranes or colitis
443	Intestines 3, general support of intestinal functions
1560	Intestines 4, due to stress in the lower thoracic spine area
445	Intestines 5, Combination program with 560 and 1560
822	Intestines 6, secretion disturbances (diarrhoea/constipation)
422	Intestines 7, stimulation of the intestinal system
921	Intestines 8, indigestion general.
1910	Intestines 9, protein digestion
463	Intestines 10, infection residues and/or degenerative EAV values of the intestine test points
447	Digestive problems associated with the illness
561	Intestinal dysbacteria 1
562	Intestinal dysbacteria 2
1331	Stomach 1 indigestion caused by nervousness or emotional stress
911	Stomach 2 indigestion caused by nervousness or emotional stress
2960	Stomach or intestinal stress (autonomic nervous system disturbance)
20201	Appendicitis, debugging support for resolving following medical treatment/surgery
20202	Intestine, infection, infection residue
20203	Intestine, slow or poor absorption
20204	Intestine, regulation of the peristalsis (the muscle movements that move the food through the intestines)
20205	Duodenum, support if ampoules do not test as helpful
20206	Intestinal dysbacteria
20207	Enteritis
20208	Intestinal disturbances, nonspecific
20209	Ulcerative colitis (intestinal infection)
20106	Intestinal infections
20109	Candida

Nr.	Liver/gall/pancreas
430	Support of liver detoxification, option 1
431	Support of liver detoxification, option 2
434	Alleviation of troubles of the gallbladder.
829	Pancreatitis, chronic
20301	Liver detoxification

Nr.	Kidney/bladder
480	Support of the kidney detoxification option 1
481	Support of the kidney detoxification option 2
482	Support of the kidney detoxification option 3

483	Bladder infection
20401	Irritable bladder
20105	Urinary tract infection

Nr.	Heart/circulation/HCS
502	Circulation support, head
504	Circulation/blood flow support, abdomen
904	Psycho somatic stress on the heart
1281	Arteries, arteriosclerosis
1960	Heart best, Irregular
20501	Piles (hemorrhoids)
20502	High blood pressure - supporting resolution of hypertension
20503	Veins, phlebitis (inflammation of a vein)
20504	Venous system, non-specific functional impairment 1
20505	Venous system, non-specific functional impairment 2
20506	Veins, varicose 1
20507	Veins, varicose 2
20508	Blood count normalization support

Nr.	Draining/detoxification
505	General detoxification using body secretions
512	Detoxification using earwax as the information source
513	Detoxification using tear fluid as the information source
514	Draining by means of/over nose secretion
515	Detoxification using particles of skin such as dandruff or scaly skin as the information source
1999	Detoxification of the mucous membranes
505	General detoxification using body secretions
20601	Detoxification, general
20602	Drugs, opiate medication, addiction
20603	Eczema, detoxification using urine as the information source
20604	Skin diseases, toxic stress
20301	Liver detoxification

Nr.	Skin
516	General skin related program
991	Skin eczema 1, stress of the skin as a result of kidney irritations
1380	Skin eczema 2, stress of the skin as a result of acute kidney irritations
1381	Skin eczema 3, stress of the skin as a result of chronic kidney irritations
1480	Skin eczema 4 and kidneys, stress of the skin as a result of clinically determined kidney irritations
20701	Skin diseases acute, kidney-related
20702	Skin diseases in situations where the disturbances are in the area of lymph nodes
20603	Eczema, detoxification using urine
20604	Skin diseases, toxic stress

21904	Cellulitis (supplemental) (diffuse and especially subcutaneous inflammation of the connective tissue)
20109	Mycoses, debugging to support the resolution of mold or fungal infections

Nr.	Eyes
520	Eyes, inflammatory reaction
521	Eyes, corneal irritations (due to weakening of the eye muscles)
524	Eyes, light fatigability
525	Eyes, infections, debugging to support resolution of

Nr.	Ears/hearing
522	Hearing problems general
523	Disturbances of the Parotis ((parotid gland, if necessary also at mumps applicable)
590	Hearing system, general stress
2530	Ear pain (phase 1)
2500	Ear pain (phase 2)
20901	Ear pain, accompanying treatment
20902	Chronic Ear Infection (Otitis)
20903	Acute hearing loss

Nr.	Musculoskeletal system
533	Stress of the cervical spine
538	Cervical spine, sympathetic nervous system
560	Stress of the lumbar spine
600	Ankle, acute troubles
620	Hip joint, restricted motion, stiffness or pain
1291	Sternum pains
1311	Elbow-joint pains
1391	Ankle problems, chronic
1970	Cervical spine syndromes – pain, tension, restricted mobility
21001	Arthrosis, knee and ankle
21002	Cervical spine, stress related to the kidney
21003	Cervical spine, stress related to the stomach
21004	Cervical spine, lateral curvature, related to the kidneys
21005	Knee joint, functional disturbances
21006	Duplay's disease, Duplay frozen shoulder, "fresh Zen Buddhism poor/shoulder syndromes"
21007	Coxarthritits
21008	Carpal tunnel syndrome
21009	"tennis elbow" (pain in elbow)
21503	Pain, cervical spine
21504	Pain, thoracic spine/almost piercing
21505	Pain, Lumbar spine (low back)

Nr.	Metabolism
839	Cell metabolism, activation (option 1)

402	Cell metabolism, activation (option 2)
530	General support of the metabolism
812	To support acid-base balance
951	Cell regeneration after operations
21101	Protein metabolism disturbances
21102	Fat metabolism disturbances
20203	Intestine, for slowed down absorption

Nr.	Allergy/immune system
570	Immune system, support of the defence mechanisms
541	Support of the respiration, inhalation allergy
582	Immunodeficiency general
977	Food hypersensitivity, allergy
978	Intolerance/allergy to organic irritants
979	Intolerance/allergy to synthetic substances
1530	Allergies/intolerances, direct meridian debugging

Nr.	Nervous system/central nervous system
571	Support of the brain efficiency, right side (step 1)
572	Support of the brain efficiency, left side (step 1)
940	Central nervous system
960	Autonomic nervous system, general stress
1430	Nonspecific giddiness/dizziness (option 1)
1431	Nonspecific giddiness/dizziness (option 2)
21301	nervous aggression, hyperactivity
21302	Disturbance of muscle/motor coordination
21303	Nerves, regeneration/restricted reflexes
21304	Depression – to be used to compliment other forms of treatment

Nr.	Support/ Repair of the vitality
900	Vitality, support part 1
903	Vitality, support part 2
1900	Vitalität, Unterstützung; Zusatzprogramm
21701	Lack in drive
21702	Dismantling blockades of an energetic species
21703	Oxygen uptake about pulmonaries alveoli, improvement
21704	Addiction treatment, accompanying
21705	Vitality, support of
21706	Vitality, support of

Nr.	Lymph
610	Lymph node swelling
930	Lymph activation (option 1)
830	Lymph activation (option 2)
21401	Activation of lymph drainage
20702	Skin problems in the area of disturbed lymph

	nodes
20903	Acute hearing loss

Nr.	Connective tissue
21901	Connective tissue blockage, activation of the connective tissue
21902	Connective tissue, chronic stress
21903	Fibrositis (Inflammation of the white fibrous connective tissue, especially surrounding muscles, causing pain and stiffness.)
21904	Cellulitis (supplemental)
21905	Reducing the interference of scars
21906	Panniculitis, inflammation of the subcutaneous layer of fat
21907	Wound healing, support for
21908	Parodontosis (infection around the teeth)
21008	Carpal tunnel syndrome
20501	Piles (Hemorrhoids)

Nr.	Traumas/pain
630	Bruises or injuries of any kind
650	Bone pain after trauma
1630	Injury/trauma option 1 (also see 2630)
2630	Injury/trauma option 2 (also see 1630)
21501	Muscular hardening or muscle pain
21502	Pain generally
21503	Pain, cervical spine
21504	Pain, thoracic spine – piercing feeling
21505	Pain, Lumbar spine – low back
21506	Pain convulsive
21507	Pain, phantom limb pains
21508	Pain, jaw/teeth
20901	Ear pain, debugging support for resolving
21509	Burns, debugging support
21510	Burns, debugging support – option 2
21511	Injuries, sports injuries

Nr.	Rheumatic diseases
22301	Rheumatoid troubles 1 – inflammation and pain or stiffness in joints
22302	Rheumatoid troubles 2 – inflammation and pain or stiffness in joints
22303	Rheumatism, pain, rheumatically caused
22304	Rheumatic troubles of the joints
22305	Rheumatism, connective tissue

Nr.	Radiate and other field loads
700	Geopathic stress
701	Radiation stress general
702	Electrical magnetic sensitivity

Nr.	Endocrine system (hormones)
934	Endocrine imbalance
980	Endocrine regulation (phase 1)

981	Endocrine regulation (phase 2)
21801	Endocrine dysregulation

Nr.	Gynecology - Female reproductive system
22401	Painful menstruation
22402	Mastitis - inflammation of the mammary gland , or breast
22403	Menopause, problems
22404	Menstrual problems
22405	Sterility, general
22406	Difficulty in getting pregnant

Nr.	Andrology - Male reproductive system
22501	Prostate, functional disturbances
22502	Impotence

Nr.	Other indications
621	Inguinal pain – groin pain typically associated with hernias
910	Weakening of the interference of scars
511	Stress of the gums, general
3530	Hyoid bone problems (hyoid – also called the tongue bone – problems are usually with the associated muscles)
3970	Chakra balance, 1-3
3971	Chakra balance, 4th chakra
3972	Chakra balance, 5-7th chakra
21750	Chakra balancing – use this program for the Yin/Yang Chakra test kit

Nr.	Special programs
9900-9994	Reserved for extensions
9995	Automatic Mode, text indication only
9996	Automatic-Mode, electrode (client) and upgrade (true phase)
9997	Automatic-Mode, electrode (client) and Debug (inverse)
9998	Automatic-Mode, container (test container) and upgrade (true phase)
9999	Automatic-Mode, container (test container) and Debug (inverse)
29990	Clipboard/intermediate file

Illustration 17b

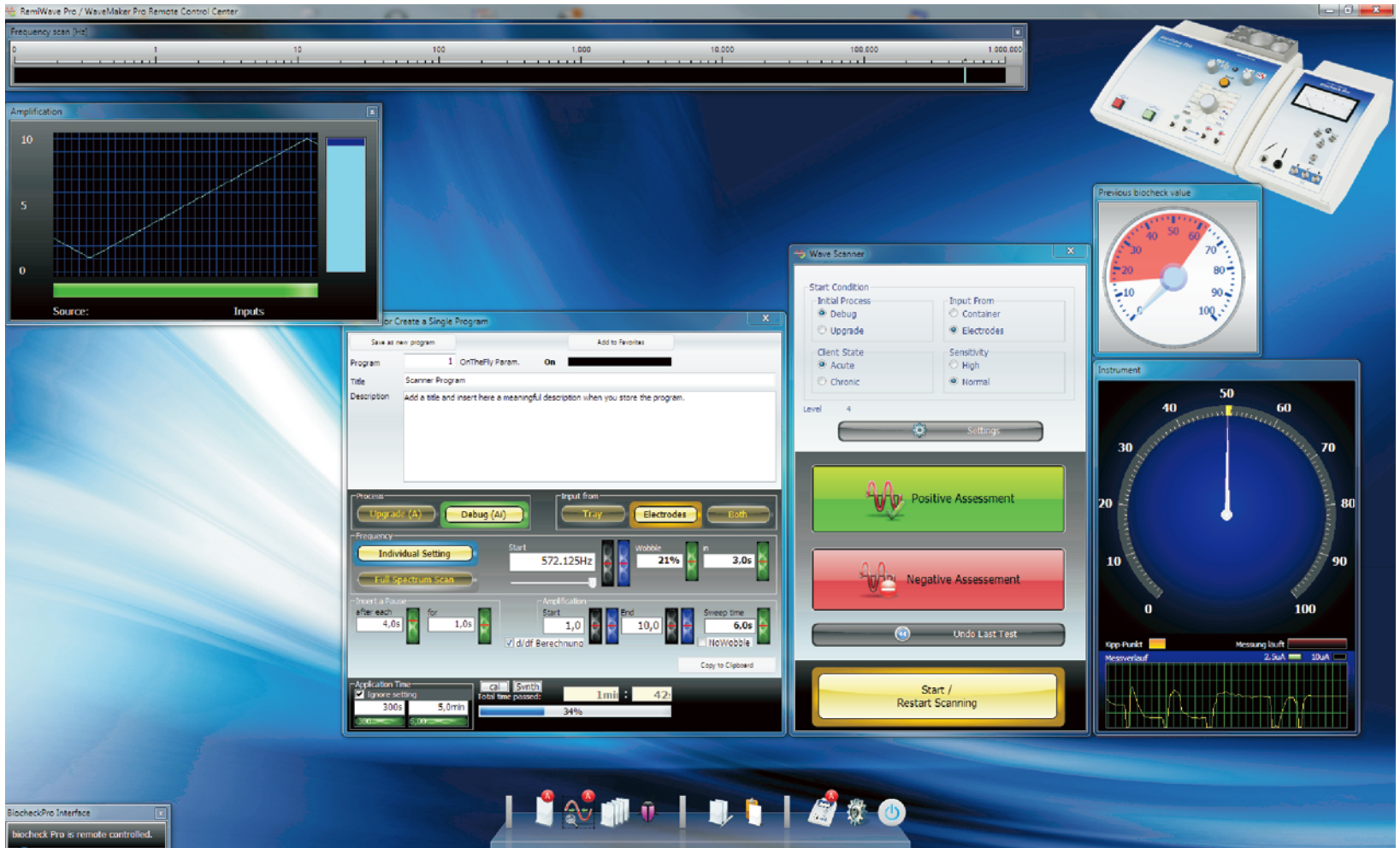


Illustration 17b

Typ I Allergies

(acc. Dr. Schumacher)

Acute forms:

Inhalation allergy, Pollinosis,
A. against animal epithelia, chemicals
scents, foodstuff, drugs.
AL, Skin, LU, SN, CT, LI/SI

Chronical form:

Antianaphylaxis, masked out by habituation
(see Prof.Rinkel)

Neurodermatitis,
chronic "endogenous" bronchial asthma,
ulcerative colitis

- | | |
|--------------------|-------|
| - general | AL |
| - skin | Skin |
| - bronchial system | LU |
| - intestines | LI/SI |

Other 'Allergies'

(acc. Dr. Schumacher)

Pseudoallergy:

Incompatibility, similar to the allergic
reactions, without immunological
mechanisms

- reaction depending on quantity
(e.g. azo colors, benzoate,
phosphate, PHB-Ester), SN

Intolerance reaction :

- by the lack of enzymes in the digestion
- by high histamine supply

Symptoms in contrast to "genuine" allergies:
weariness, exhaustion, nerviness,
concentration disorders, migraine,
anxiety states, depressive resentment.

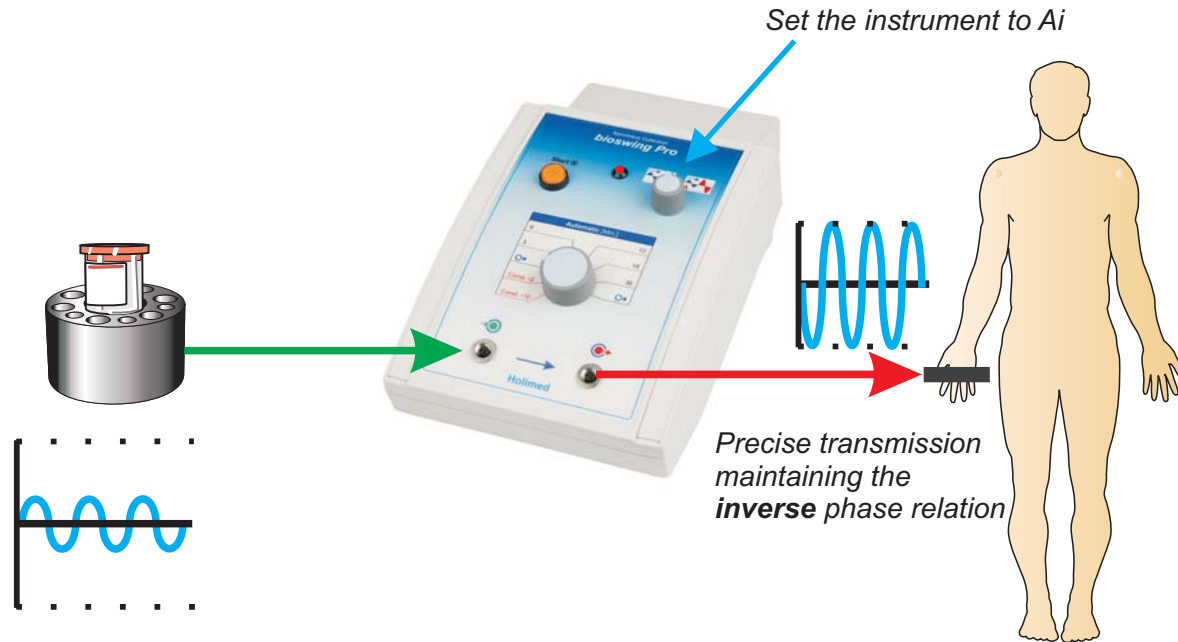
The Rules for using the bioresonance at allergies

1. Use 3 minutes Balance in inverse (Ai)/Automatic Mode before the EAV-measurement or other energetic tests.
2. Do the Resonance Test on the nodes which are irritated and seem **"not relevant to the allergy."** Then transfer the samples using bioresonance to **approximately normalize** these nodes.
(usually 5-6 minutes non-inverse (A) / Automatic Mode)
3. Now test the allergen (or toxin) samples on the relevant nodes.
(inverse (Ai), or natural(A) depending on the client's situation)
4. Select only those samples which show the **strongest reaction** on the nodes.
5. Transfer these substances one by one to the client, choose 3 or 5 minutes for each sample in inverse (Ai) / Automatic Mode.
6. At each 3rd treatment test the reaction of the client. If no reaction is measurable anymore then transfer the information again - **at least once more.**

This works the same way for the test of energetic influences of toxins.

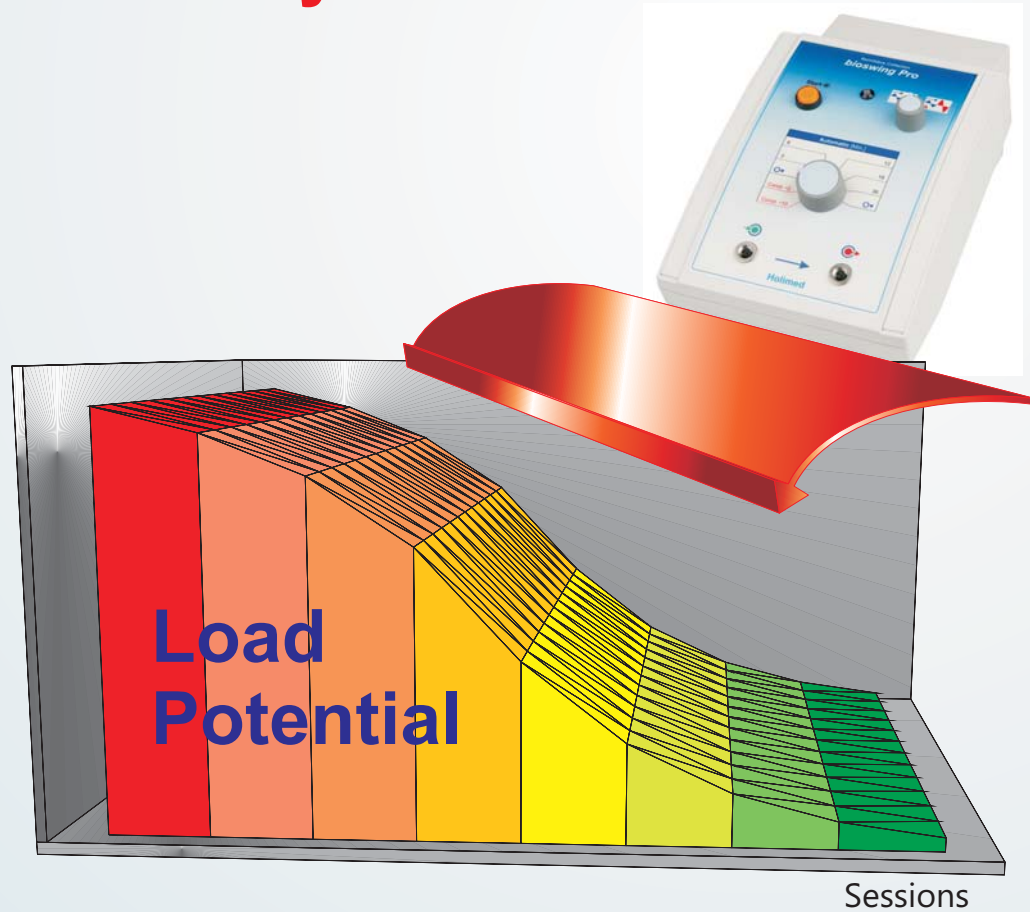
Apply Information in inverse (Ai)

Active transmission using
the bioresonance instrument
(here bioswing Pro)

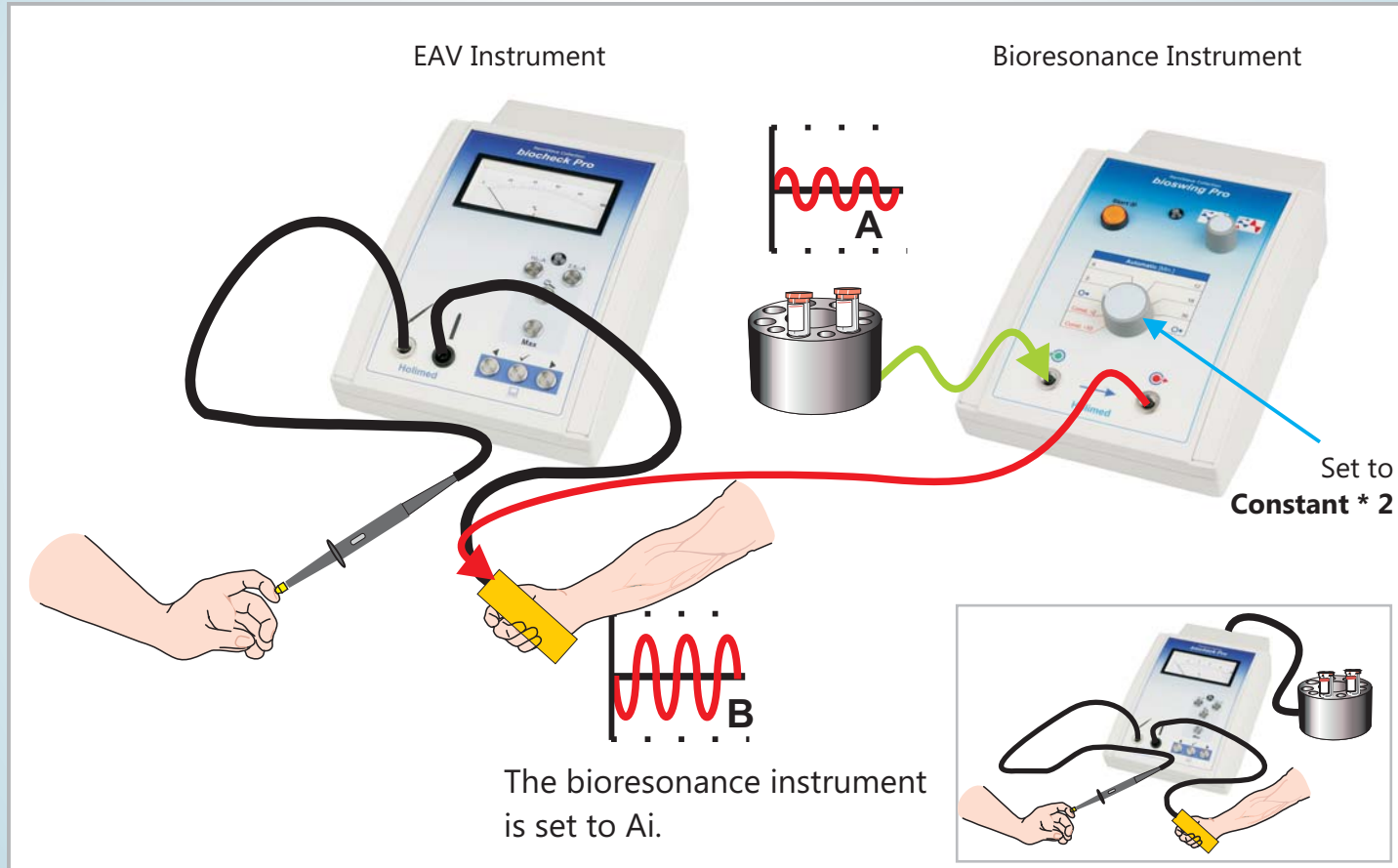


The shown signals serve only the illustration.

Reduction of an Energetic Load by Bioresonance



Measurement in inverse (A_i) (e.g. Allergens) or non-inverse (A) (e.g. Testkit Modules)



The shown signals serve only the illustration.

ISBN 3-00-038973-3



9 783000 389733

