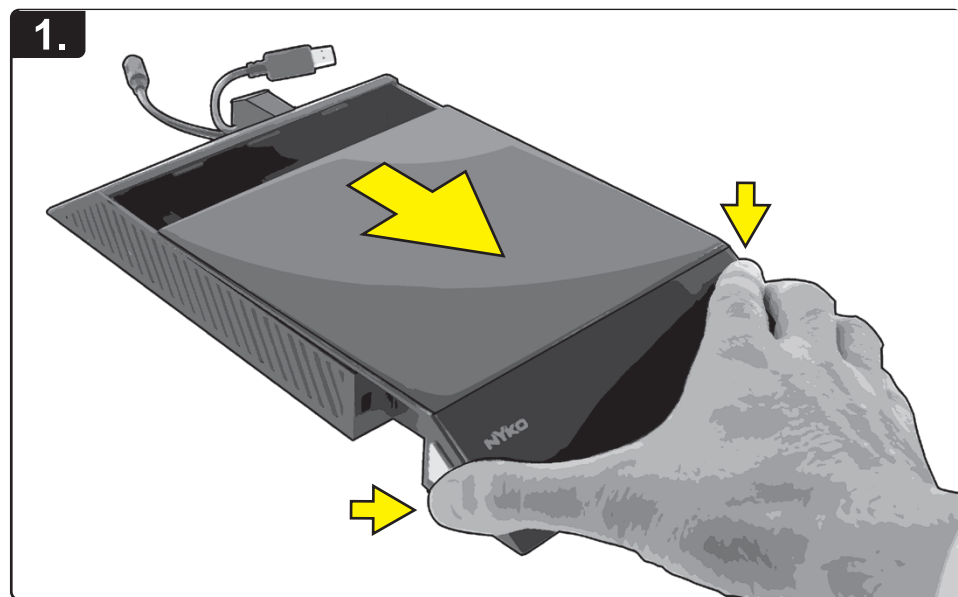


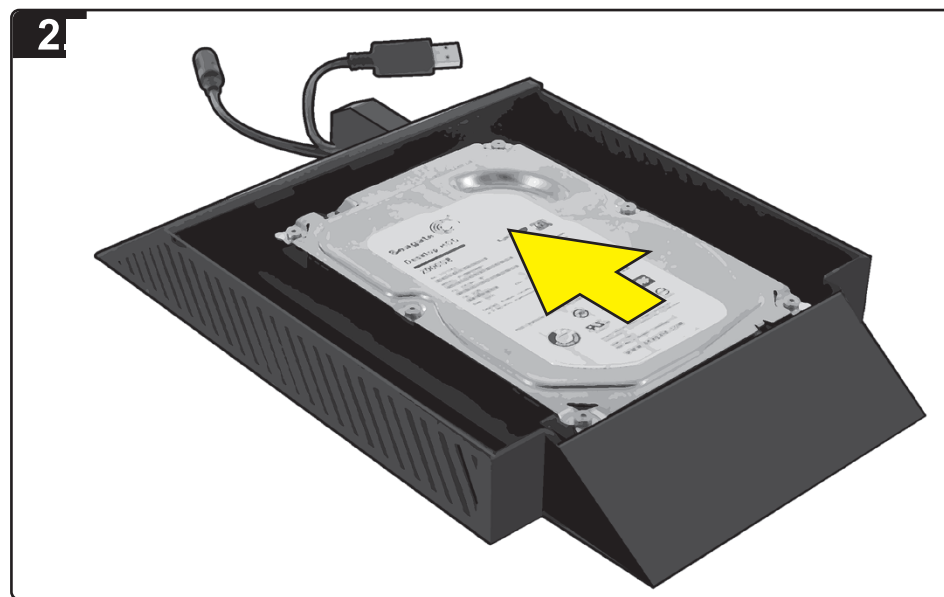
DATA BANK™

Enclosure Installation Procedure

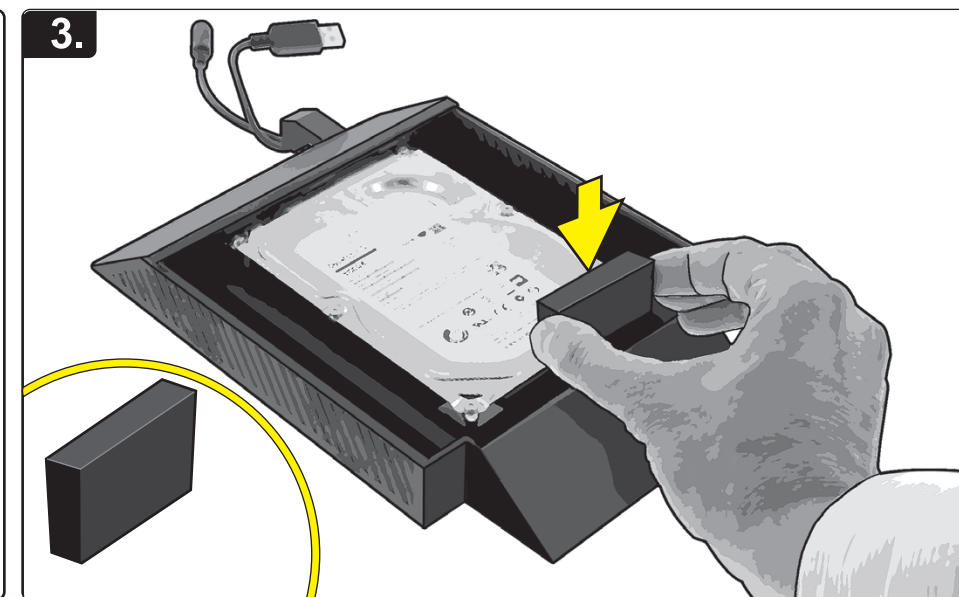
NYKO®



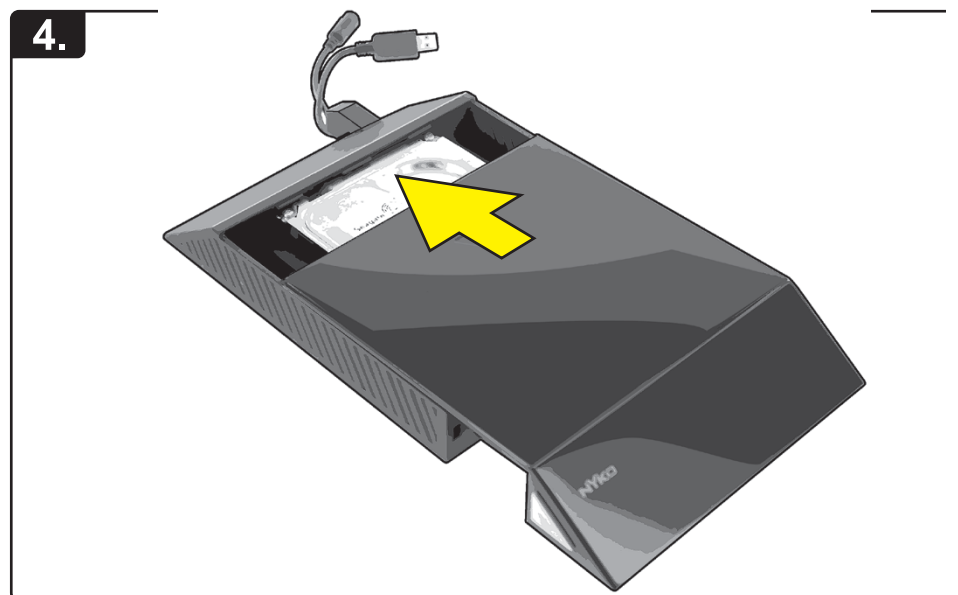
1. Press and hold the chrome release buttons on both sides of the cover, and gently pull the cover off.



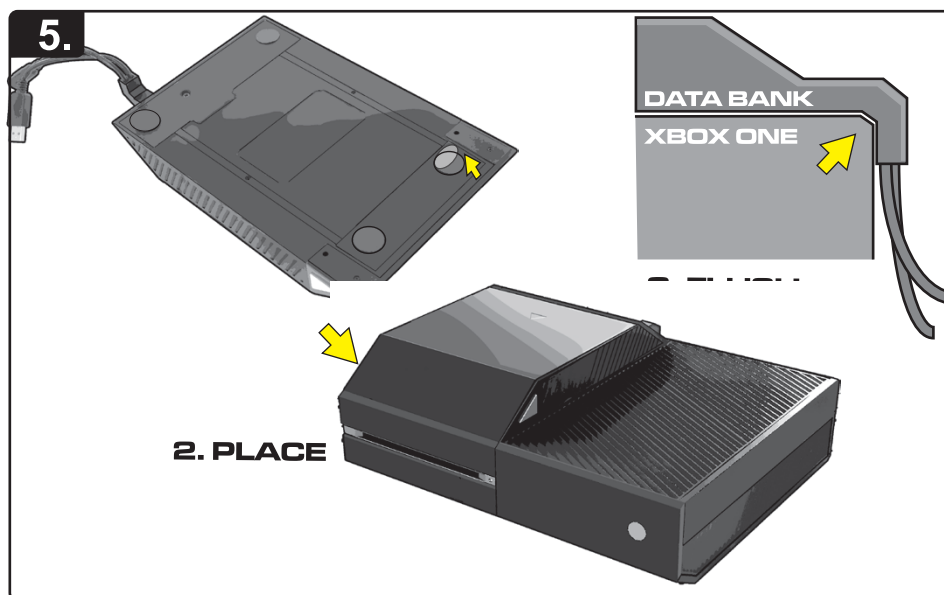
2. Place the 3.5" Hard Drive (not included) into the Data Bank and press forward to connect



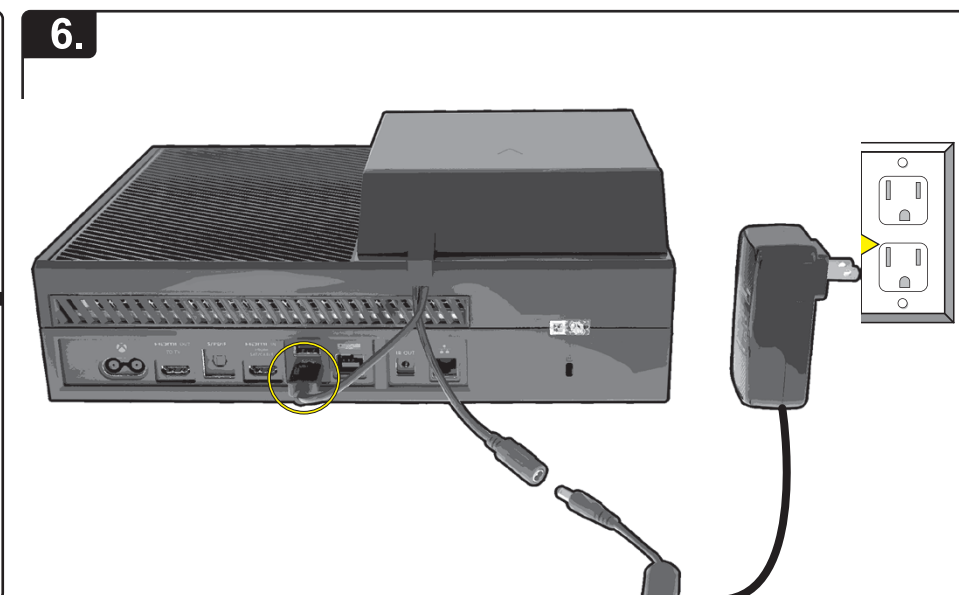
3. Place the included Foam pad between the Hard Drive and enclosure, to further secure the hard drive from movement



4. Gently slide on the Cover and press into locked position



5. Remove the protective covers from the semi adhesive foam feet on the Data bank, and place the device on the console surface. Make sure to align the Data drive on the console properly so that the L shaped cable guide is flush with the back of the console



6. Connect the USB cable to one of the USB ports on the back of the console. Then connect the AC adaptor to the power port on the cable, and the AC to the wall socket



Please refer to your console instructions or the Microsoft support site for details on ways to use an external Hard Drive with your Xbox One Console

NYKO®
Data Bank Setup for XBOX ONE™
Register this product online:
www.nyko.com

If you are experiencing difficulties, please contact us:
Email: customersupport@nyko.com
Phone: +1-888-400-6956

Nyko Product Limited Warranty:

This Nyko product is warranted to the original purchaser for the product's normal intended use for a period of ninety (90) days from the date of purchase. If a defect covered under this warranty occurs, Nyko will replace or repair the product or its defective parts, at Nyko's option, at no charge. This warranty does not apply to defects resulting from misuse or modification of the product. The product should be returned with proof of purchase, a brief statement of the claimed defect, and the purchaser's contact information, to: Nyko Technologies, Inc., 1990 Westwood Blvd., 3rd Floor, Los Angeles, CA 90025, with freight charges prepaid. Please allow 3-4 weeks for processing.