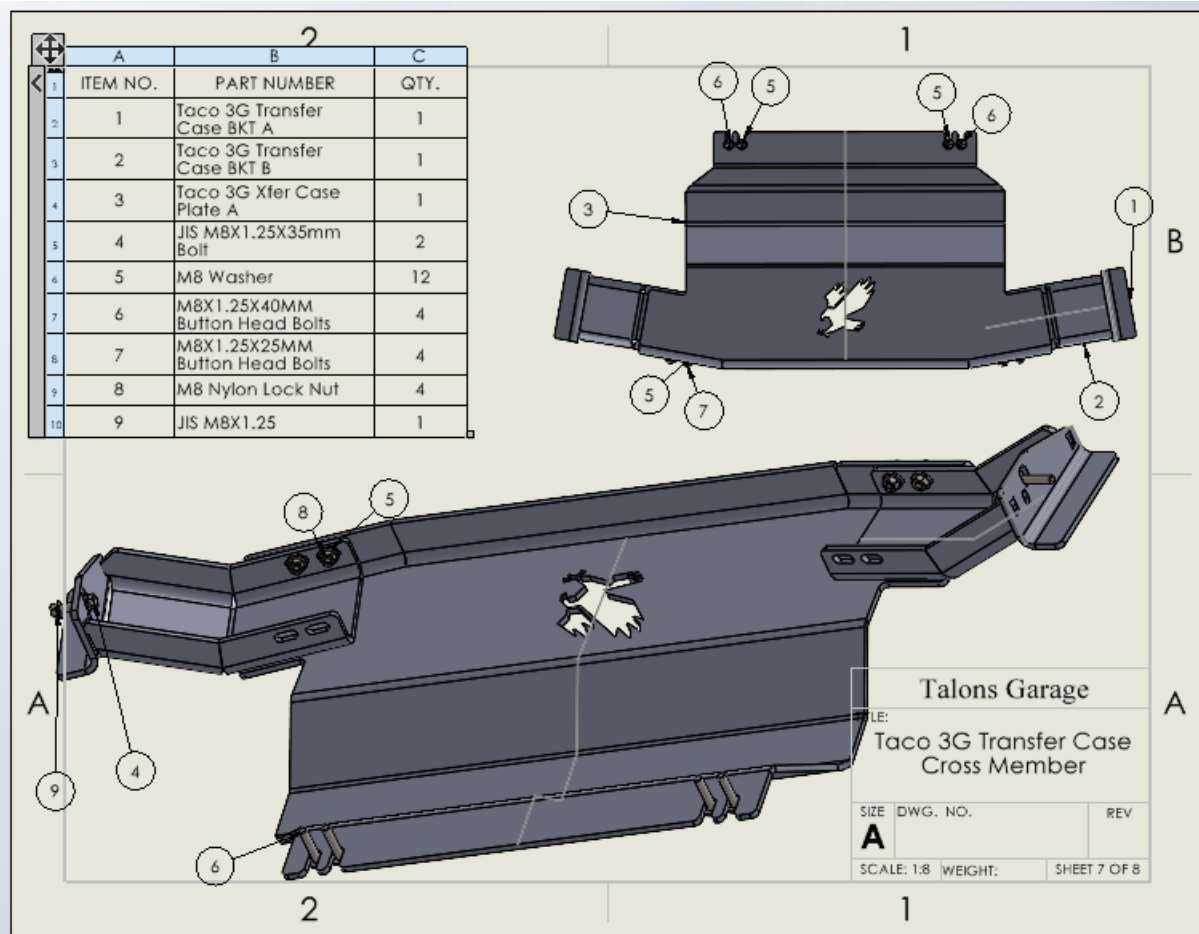


Tacoma Transfer Case Skid Plate Install Guide



Tools Required	
5mm Allen bit	13mm wrench
12mm wrench	14mm wrench

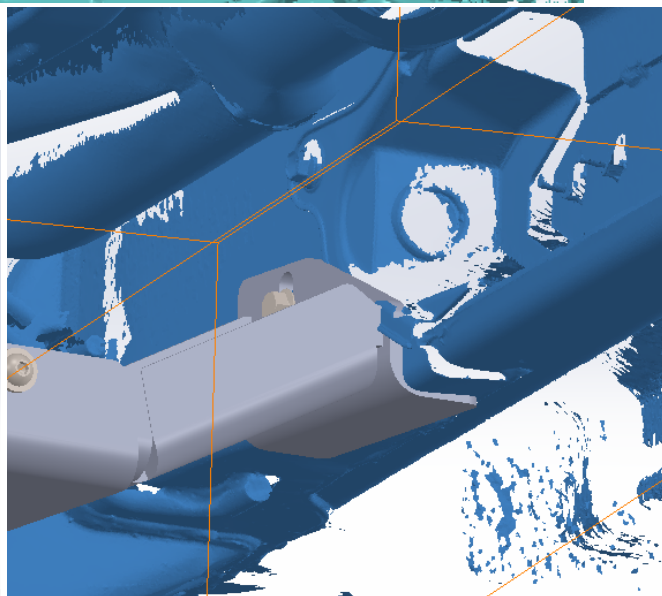
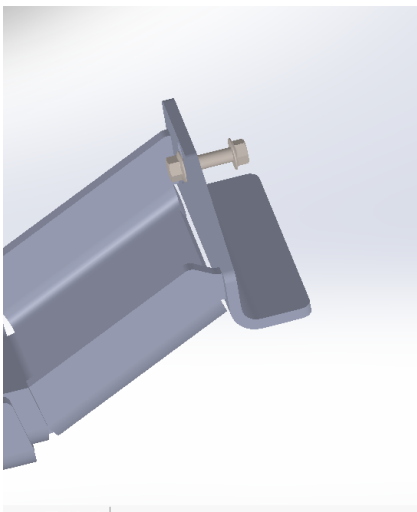
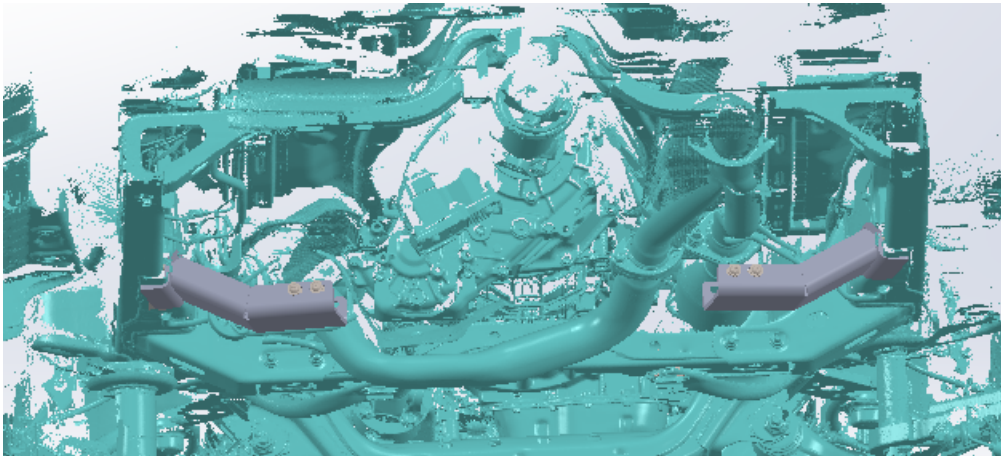
Installation is to be done at your own risk. Talons Garage is not responsible for any damage that occurs during or after installation. Professional installation recommended. Check for all included hardware and parts before starting install.

We know for a lot of users this might be their first mechanical project. Cool, and great choice! A few notes about button head bolts for those who have not used them before. We recommend using a high quality allen head bit for installing our button head bolts. This will dramatically prevent the chances of stripping the heads. We also strongly discourage the use of impact tools. Ensure the allen bit is seated

Tacoma Transfer Case Skid Plate Install Guide

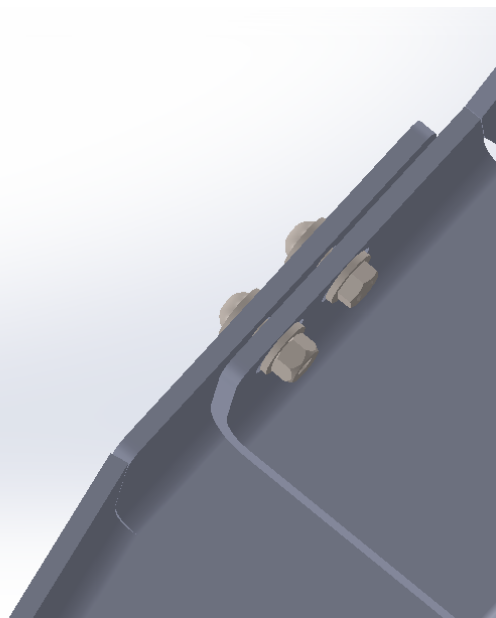
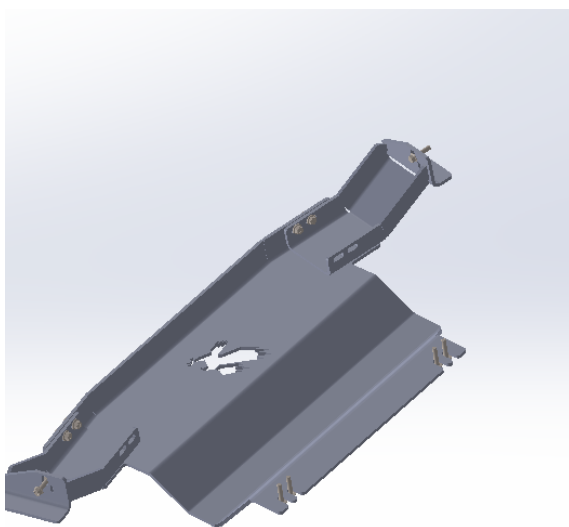
into the bolt fully before applying torque to the fastener. It is normal to have a tight fit. For the most part our M8 bolts are a 5mm allen bit, our 3/8-16X4" bolts are 7/32 and our M10 bolts are 5.5 or 6mm bits. Use care not to confuse the 7/32 and the 5mm bits as they are close in size.

1. Property lift and support your truck to give more room for installation. If installing with Talons' Garage transmission skid plate leave the mounting bolts loose until after installing Transfer case skid.
2. Remove factory dust covers from frame. We did not reinstall these, but they can be reinstalled with some trimming.



Tacoma Transfer Case Skid Plate Install Guide

3. It is easier to loosely install the side braces first. (BKT B) On the driver's side there is a bolt holding the brake lines to the frame. You will remove this bolt and gently pull the brake lines away from the frame. Slide the bracket between the brake lines and the frame and install the supplied longer bolt. On the passenger side there is a sticker covering the bolt hole. You will install the passenger side bracket with the supplied bolt and flange nut. Once again leave this slightly loose to allow adjustment once everything is installed.



4. Once the brackets are loosely installed, grab Plate A. The front of the plate will slide between the transmission plate and the frame. The rear of the plate will attach onto the brackets using 4 M8x25mm button head bolts, with the nylon lock nuts and two washers on either side.
5. At this point you can tighten everything up. We recommend starting at the rear braces of the transfer case plate. First tighten the braces to the frame using the M8 JIS bolt. You will want to hold the braces up to the frame, but don't worry if you don't get them seated against the frame perfectly, they will be fine. After tightening the brackets to the frame, you will want to tighten the brackets to the rear of the transfer case plate. Finally, you will tighten the 4 bolts at the front of the plate that also hold the ear of the transmission plate. We recommend checking your bolts for tightness after 50 miles, and every 500 miles thereafter.
6. Enjoy your new protection. Be sure to take a photo and upload it to your favorite social media platform. We love seeing our products in the wild and it makes our day every time!

Thank you for joining Team Talon!!



Tacoma Transfer Case Skid Plate Install Guide

Shaun and Crystal