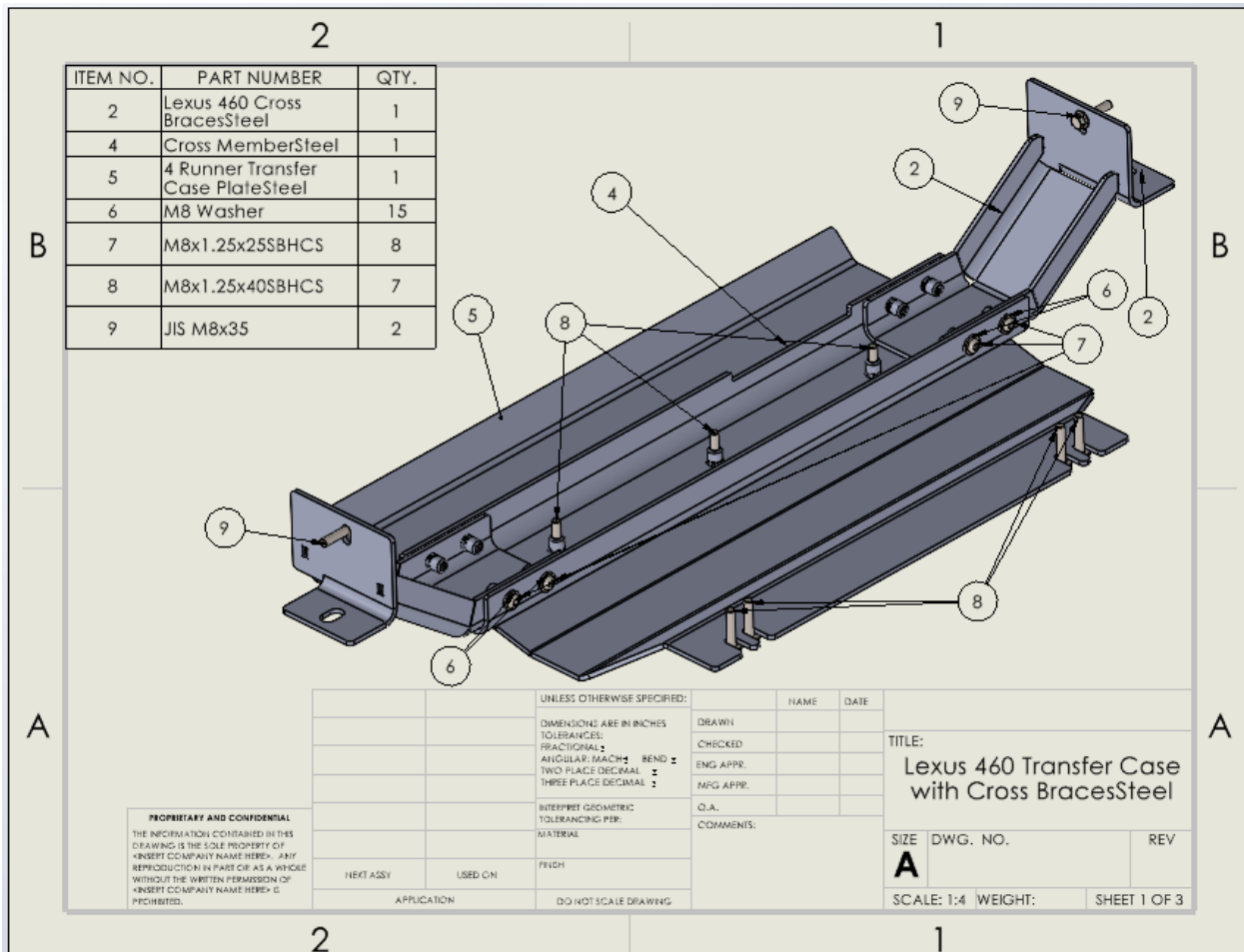


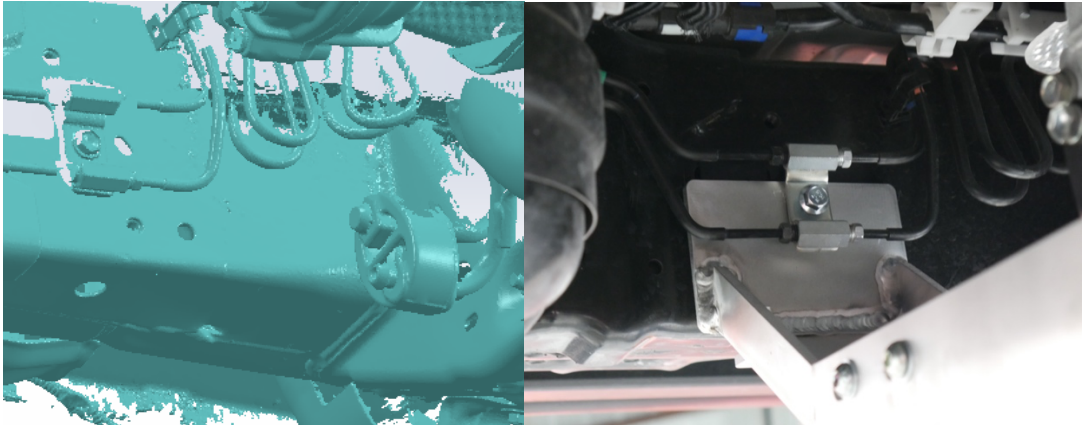
GX460/4Runner Transfer Case Skid Plate Install Guide



Tools Required	
12mm Socket	Magnetic pick-up tool
5mm Allen key	13mm wrench

1. First locate the three pieces that make up the transfer case cross member. It is easier to install the two side brackets on the vehicle, than install the cross brace on the two brackets.

GX460/4Runner Transfer Case Skid Plate Install Guide

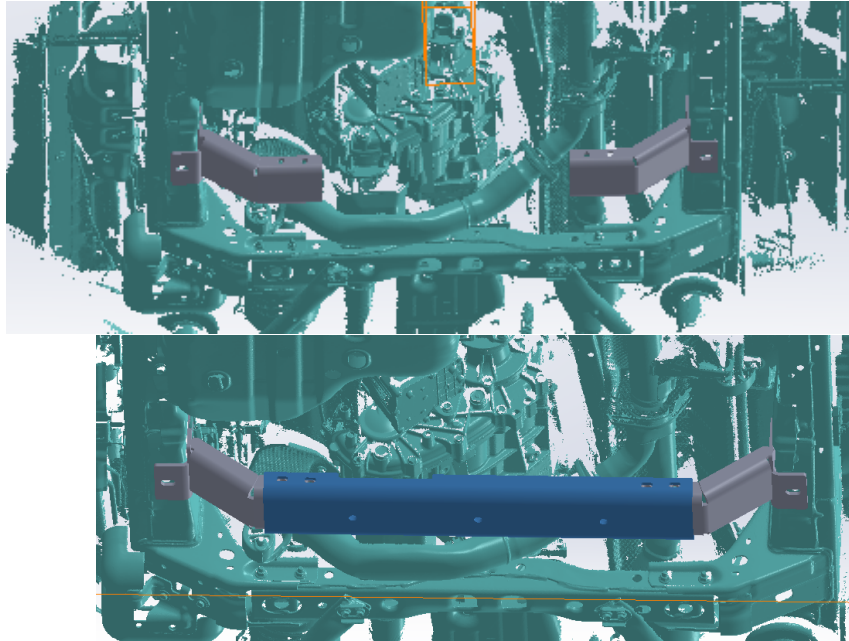


2. Locate the 12mm bolt on the driver side frame rail behind the transfer case cross member. Remove bolt. The bracket will pull away from the frame slightly. This will be needed in order to install the transfer case crossmember behind it. The transfer case crossmember will go between the line bracket and the frame. Use care not to damage the lines. You will replace the OEM bolt with a M8x35mm bolt included in the kit. Leave the bracket loose to allow installation of the center crossmember.



3. There will be an empty threaded hole on the passenger side frame rail across from the driver side bracket. You will install the other transfer case crossmember bracket on this bolt using the included M8x35mm bolt. Leave the bracket loose to allow installation of the center crossmember.

GX460/4Runner Transfer Case Skid Plate Install Guide



4. With the two side pieces installed, you can now install the center piece. You will use the 8 included M8x25mm button head bolts and M8 washers to fasten the center cross member to the side brackets. Leave these bolts loose. You will want to tighten the side braces first to the frame first, then tighten down the M8 button head bolts that hold the cross member together. If the side brackets are not totally flush against the frame of the vehicle after tightening this is ok and is not a cause for concern.

GX460/4Runner Transfer Case Skid Plate Install Guide



5. Ideally this will be installed with a Talons garage transmission skid plate. If this is the case leave the bolts on the transmission skid plate loose. You will want to install the transfer case plate between the transmission plate and the frame of the vehicle. The Transfer case plate will mount to the cross member with 3 M8x40mm bolts that will screw into riv nuts on the bottom of the crossmember.
6. At this point tighten all the bolts to the transfer case plate and the transmission plate. Enjoy your new protection. Be sure to take a photo and upload it to your favorite social media platforms. We love seeing our products in the wild and it makes our day.