

## F-250 Diesel Rear DPF Shield Installation Guide



1. Rear DPP cover plate
2. Rear DPF cover outside frame mount
3. Rear DPF cover rear blocker
4. Rear DPF cover wing
5. Rear DPF Cover inside rear frame mount
6. Rear DPF Cover Outside front frame mount
7. DPF Cover frame mount wing nut

Hardware	QTY
M8 25mm button head bolts	8
M8 washers	12
M8 nylon lock nuts	4
M8x40mm button head bolts	4

## F-250 Diesel Rear DPF Shield Installation Guide

### Install:

1. Install wing on rear DPF Cover plate. Wing will bend towards the outside of the plate. Use 2 M8x25mm bolts and nylon lock nuts. Install rear cover using 2 m8x24mm bolts and M8 nylon lock nuts.



2. Install DPF Filter side mount as shown. It may be necessary to loosen the upper bolts on the DPF bracket to allow you to line the spring clips back up.

## F-250 Diesel Rear DPF Shield Installation Guide



3. There are two cross members going across the DPF Cover in the general area the rear DPF cover installs. Take wing nut, and place into position. The Front DPF Cover mount is the shorter one and will go on the lower cross member. Install wing nut in the square opening as shown, and position the riv nut in the hole

## F-250 Diesel Rear DPF Shield Installation Guide



4. Take the front DPF cover mount, and raise into position, inserting the screw into the nut above. Do not tighten fully at this time. Use care when balancing front mount to avoid dropping onto you face.

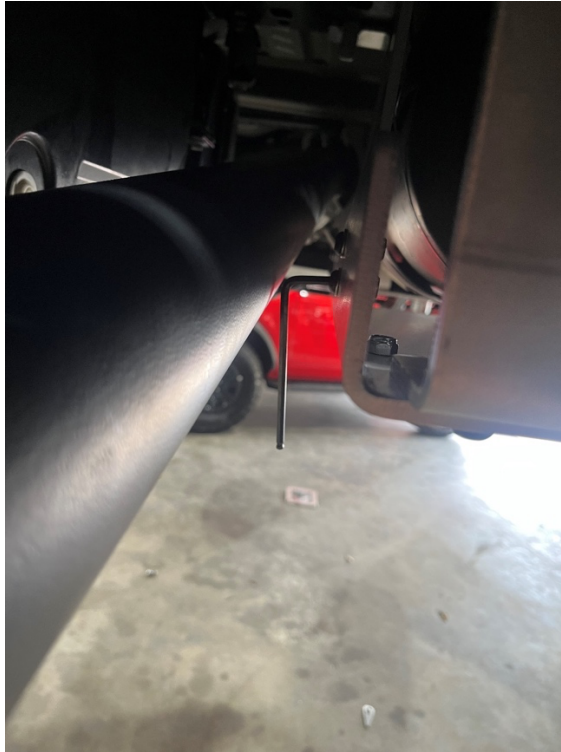


## F-250 Diesel Rear DPF Shield Installation Guide



5. Repeat above steps for the rear mount, which is the longer of the two. Photo above shows appropriate direction.
6. At this time you can install the main plate. Lift plate into position. And install the 2 M8x40mm bolts into the side bracket. While supporting the plate Install the 4 M8x25mm bolts into the front and rear frame mounts.

## F-250 Diesel Rear DPF Shield Installation Guide



7. An allen key will be needed to tighten this bolt. It is recommended you tighten this one first, and all other afterwards. You may need to push the plate slightly over to give enough room between drive shaft and plate. A Ball head allen may be needed for all other bolts.