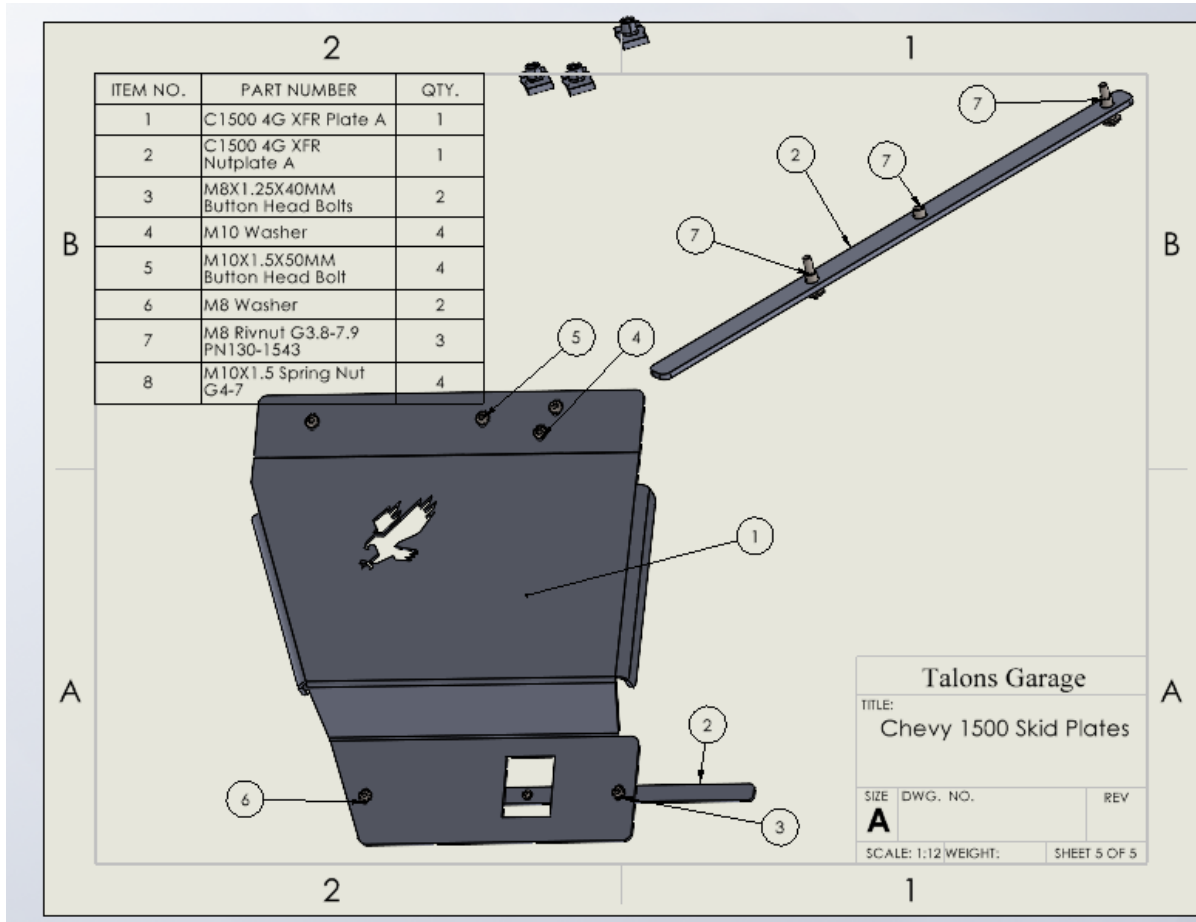


Chevy 1500 Transmission Skid Plate Install Guide



Tools Required	
13mm socket	6mm allen socket
15mm Socket	
5mm Allen socket	

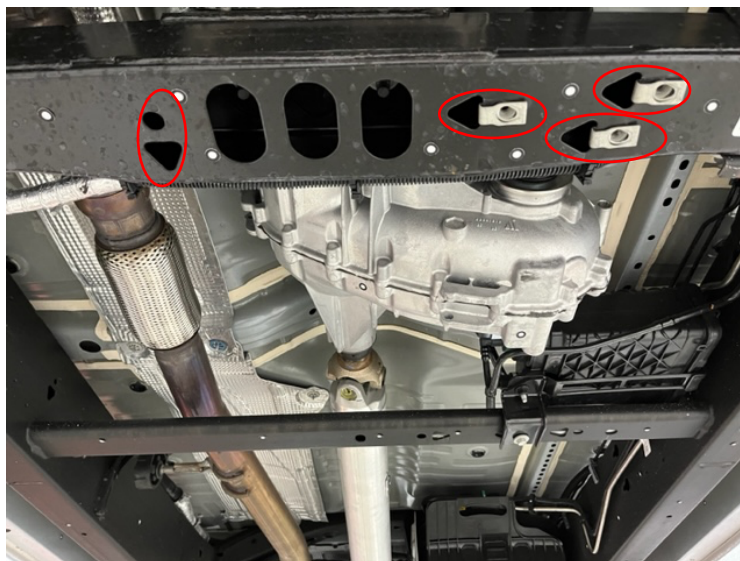
Installation is to be done at your own risk. Talons Garage is not responsible for any damage that occurs during or after installation. Professional installation recommended.

1. If installing with other Talons Garage products, it is recommended to install in this order. Front skid plate, Transmission skid plate, then transfer case skid plate.

Chevy 1500 Transmission Skid Plate Install Guide



2. Remove factory Evap canister bolt, and spring clip. Take C1500 4G XFR Nut plate B (shown above) and insert it into the frame cross member. You will want to line up the riv nuts with the evap bolt and two other holes shown above. Replace the Evap bolt to help hold the riv nut plate in position.
3. If installing with Talons Garage transmission skid plate, follow directions in transmission install guide to install the front part of the transfer case skid plate. If not installing with Talons Garage Transmission skid remove OEM skid plate.



4. Install included M10x1.5mm spring clip in hole on the left in photo shown above. You can now install the Talons Garage Transfer Case skid plate into the 4 spring clips using the included M10x50mm bolts.

Chevy 1500 Transmission Skid Plate Install Guide



5. Install the remaining M8x25mm bolts into the rear of the transfer case plate. These bolts will thread into the riv nut plate.
6. Tighten all bolts from front to rear. Enjoy your new protection. Be sure to take a photo to share on your favorite social media platform or forum. We love seeing pictures of our products in the wild and it always makes our day!

Thank you for your support!

Shaun and Crystal