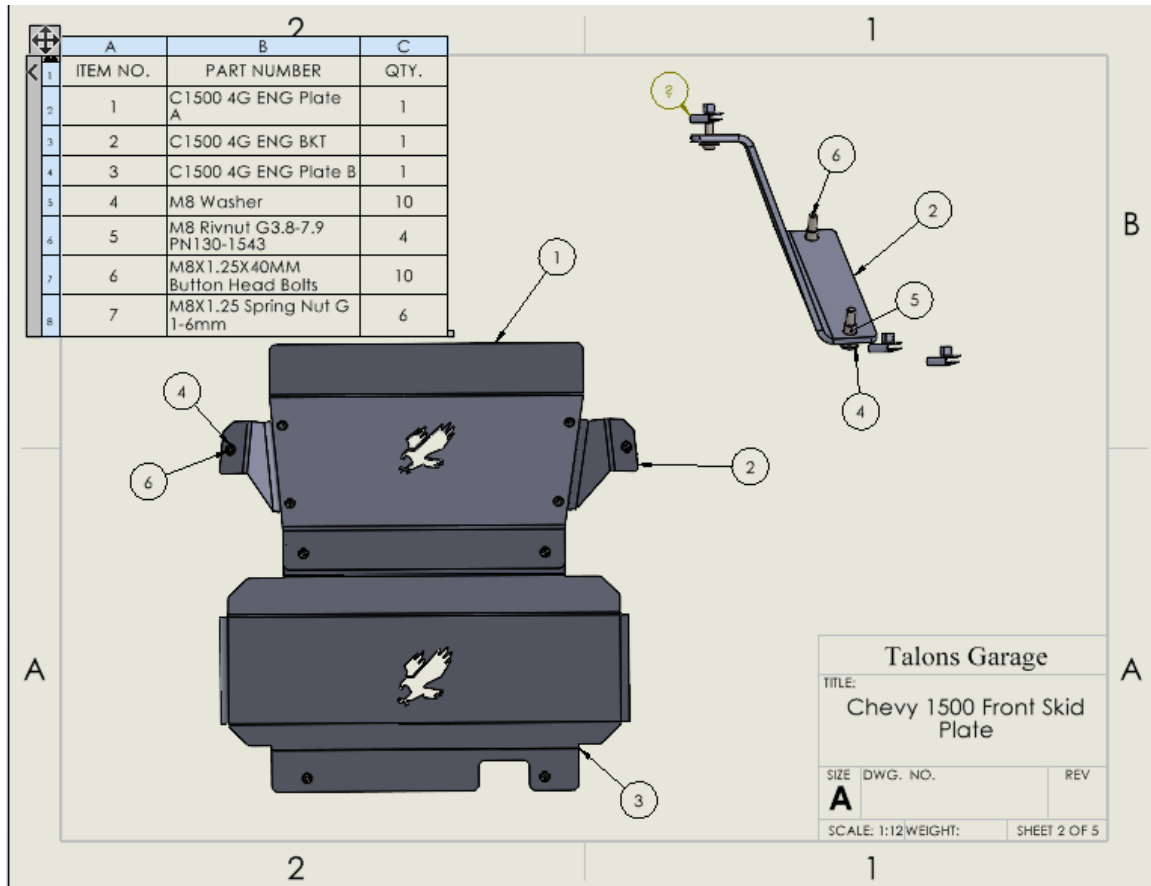


## Chevy 1500 Engine Skid Plate Install Guide



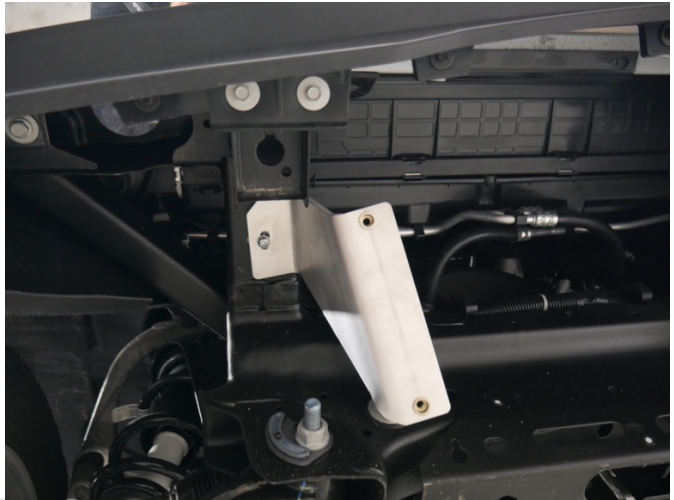
### Tools Required

13mm Socket

5mm Allen Wrench

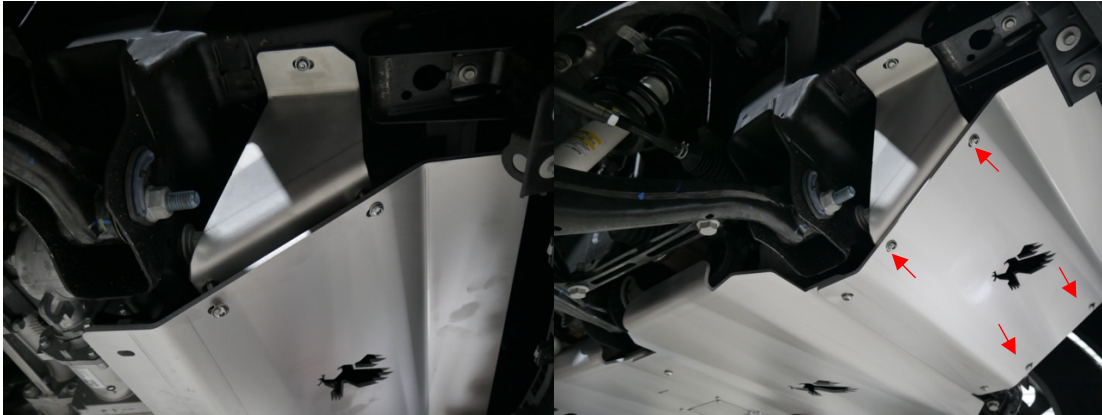
1. If installing with other Talons' garage products, it is recommended to install in this order. Front skid plate, Transmission skid plate, then transfer case skid plate.
2. Remove Factory OEM skid plates and Plastic front cover. There are a total of 6 bolts to remove. You will reuse the OEM spring nuts to install your Talons Garage Front Skid plate.

## Chevy 1500 Engine Skid Plate Install Guide



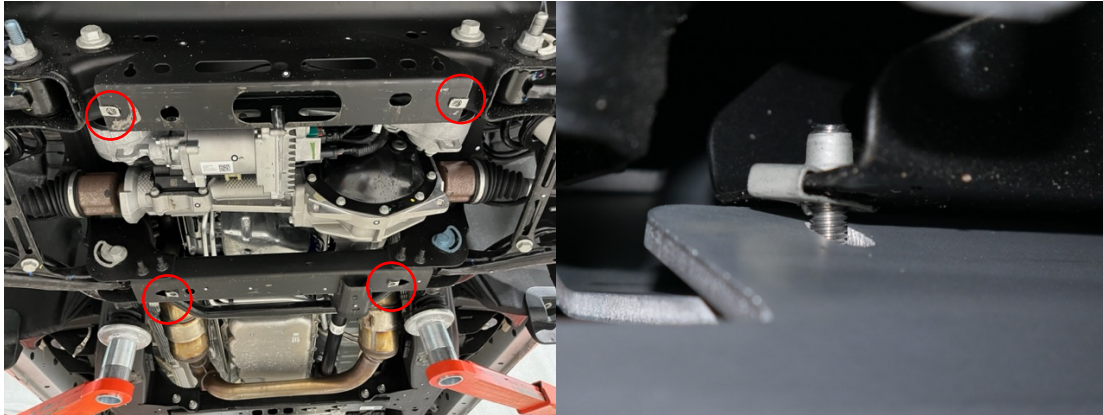
3. Start by installing your C1500 4G ENG BKT, item 2, Above. These brackets will be mirrored. Install at the top using a M8x40mm button head bolt. Leave these a little loose for the next step.

## Chevy 1500 Engine Skid Plate Install Guide



4. Lift the C1500 4G ENG Plate A up to the C1500 4G ENG BKT. You will use 4 M8x40mm button head bolts to secure the plate to the brackets.

## Chevy 1500 Engine Skid Plate Install Guide



5. At this point you can install the C1500 4 ENG Plate B. The front of the plate will sandwich between C1500 4G Eng Plate A and the frame of the truck. The holes will line up with the factory skid plate holes using the OEM spring nuts shown above. You will use 4 M8x40mm button head bolts to secure this plate to the truck. It may help to use a helper or a jack to hold the plate up while starting the bolts.
6. If you are also installing a Talons Garage Transmission skid plate/Cat Protector leave the rear of the skid plate loose to allow the transmission skid to slide between the rear of C1500 Plate B and the frame of the truck. If you are not installing Talons Garage transmission skid tighten all the bolts from front to rear.



## Chevy 1500 Engine Skid Plate Install Guide

7. Enjoy your new protection. Be sure to take a photo to share on your favorite social media platform or on your favorite forum. We love seeing our products in the wild and it typically makes our day!

Thank you for supporting Talons Garage,

Shaun and Crystal