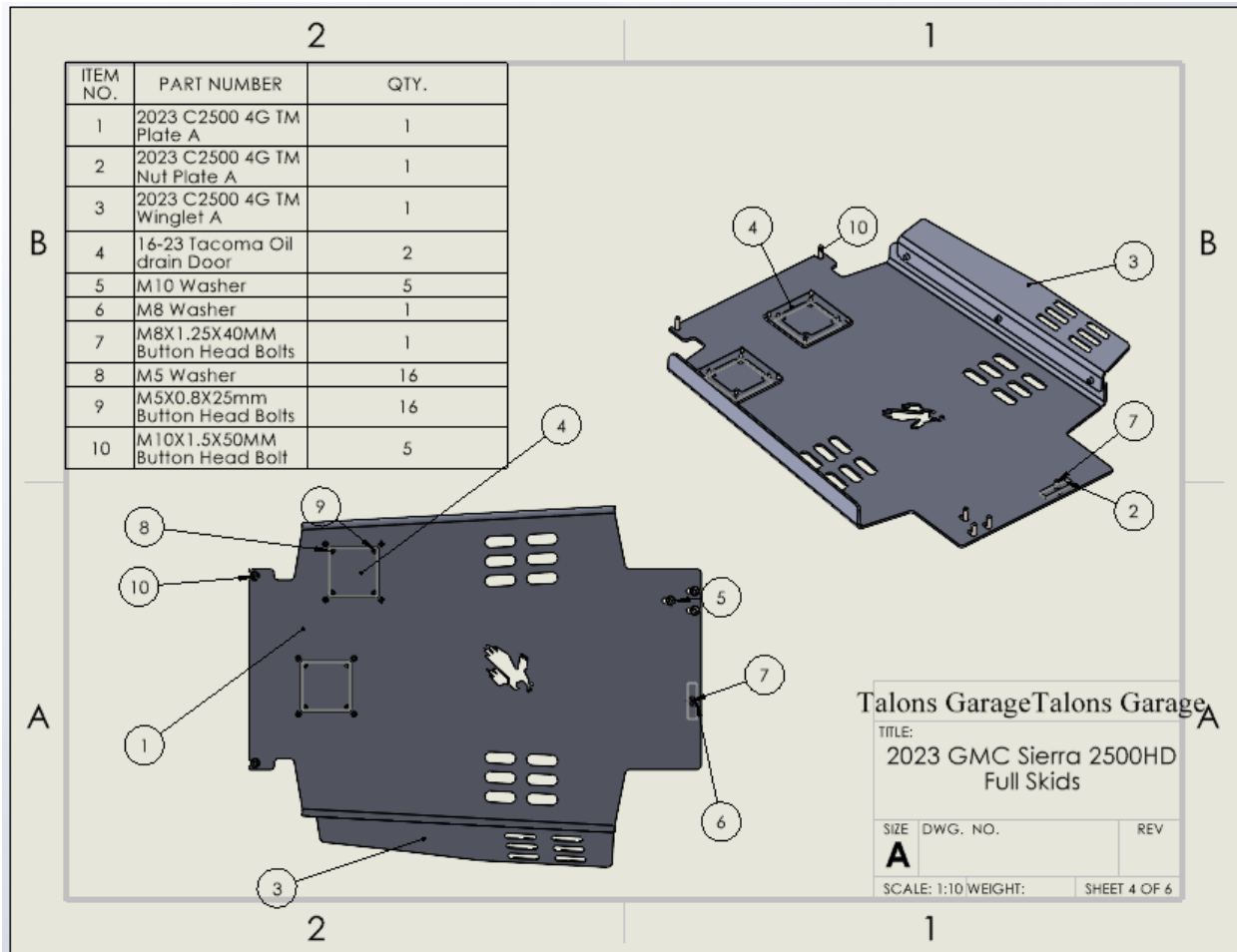


2019-2023 Chevy/GMC 2500 Transmission Skid Plate



NOTE: Riv nuts are pre-installed and will not be in hardware kit.

Tools Required		
5mm Allen head bit	6mm Allen head bit.	13mm Socket
5.5 mm Allen head bit	3mm Allen head bit	14mm Socket

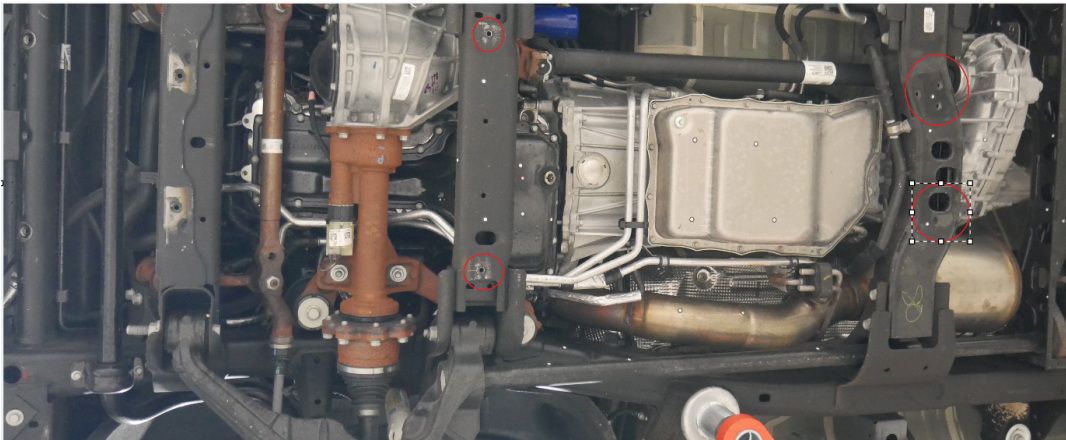
Installation is to be done at your own risk. Talons Garage is not responsible for any damage that occurs during or after installation. Professional installation recommended. Check for all included hardware and parts before starting install.

We know for a lot of users this might be their first mechanical project. Cool, and great choice! A few notes about button head bolts for those who have not used them before. We recommend using a high-quality Allen head bit for installing our button head bolts. This will dramatically prevent the chances of

2019-2023 Chevy/GMC 2500 Transmission Skid Plate

stripping the heads. We also strongly discourage the use of impact tools. Ensure the Allen bit is seated into the bolt fully before applying torque to the fastener. It is normal to have a tight fit. For the most part our M8 bolts are a 5mm Allen bit, our 3/8-16X4" bolts are 7/32 and our M10 bolts are 5.5 or 6mm bits. Use care not to confuse the 7/32 and the 5mm bits as they are close in size.

1. Remove all OEM skid plates that may be installed.
2. Install passenger side winglet (ITEM NO. 3) onto skid plate (ITEM NO. 1)



3. If installing with Talons Garage Front skid plate and Transfer case skid plate install front skid plate first, then transmission then transfer case. If installed alone thread two M10 button head bolts and washers into the two holes on the engine crossmember circled in red above. The engine cross member is in the middle of the image.
4. Lift Transmission skid into plate and slide front slots onto bolts installed in previous step. Once the front is supported you can hold up the rear of the plate and start the rear bolts. If installing with transfer case skid plate, leave rear of bolts loose to facilitate transfer case plate install.
5. Tighten all bolts from front to rear. Oil doors can also be installed at this point with the included M5 hardware. Check all bolts for tightness 100 miles after install, 500 miles after install and periodically thereafter.

Enjoy your new protection! Don't forget to take a photo of your new skid plates and upload them to your favorite social media platform. We love seeing our plates in the wild.

Thank you for your support!

Shaun and Crystal