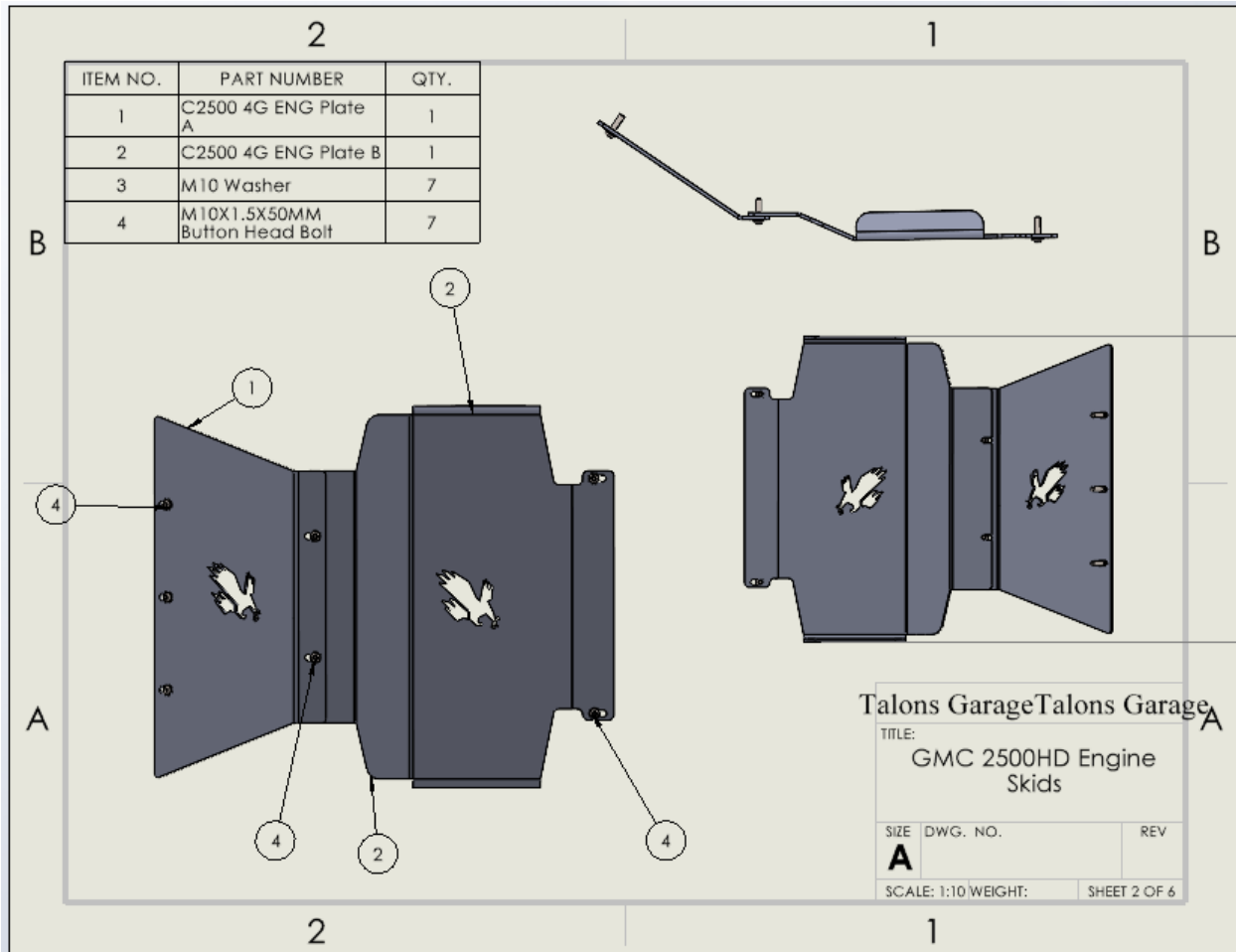


2019-2023 Chevy 2500 Engine Skid Plate Install Guide



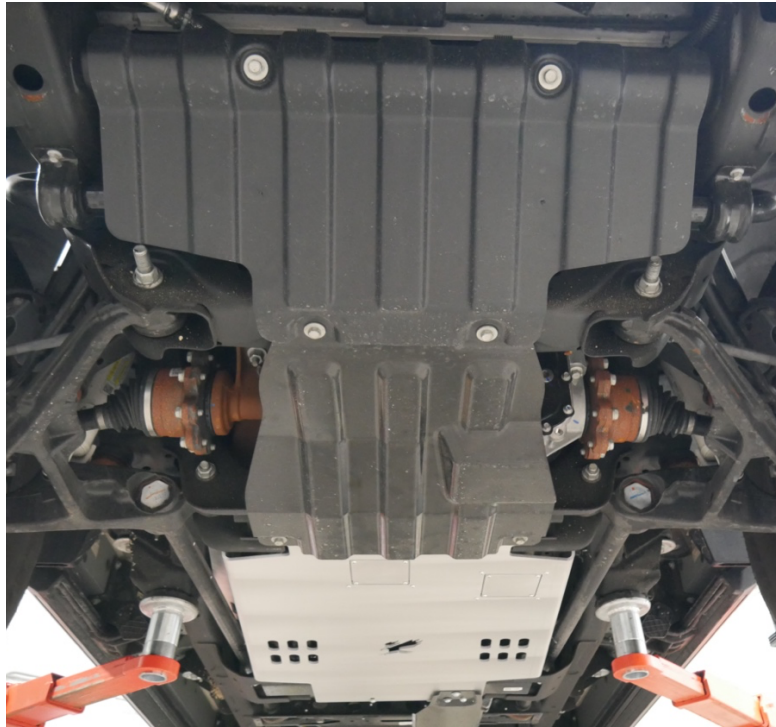
NOTE: Riv nuts are pre-installed and will not be in hardware kit.

Tools Required		
5mm Allen head bit	6mm Allen head bit.	13mm Socket
5.5 mm Allen head bit	3mm Allen head bit	14mm Socket

Installation is to be done at your own risk. Talons Garage is not responsible for any damage that occurs during or after installation. Professional installation is recommended. Check for all included hardware and parts before starting install.

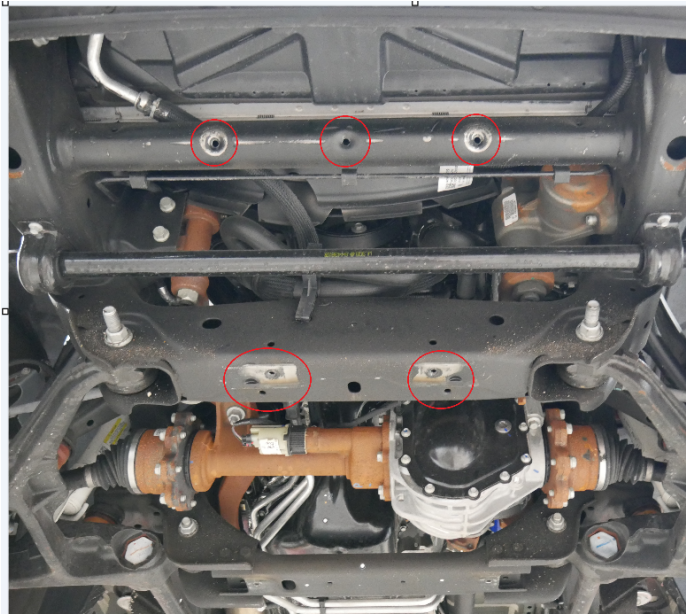
2019-2023 Chevy 2500 Engine Skid Plate Install Guide

We know for a lot of users this might be their first mechanical project. Cool, and great choice! A few notes about button head bolts for those who have not used them before. We recommend using a high-quality Allen head bit for installing our button head bolts. This will dramatically prevent the chances of stripping the heads. We also strongly discourage the use of impact tools. Ensure the Allen bit is seated into the bolt fully before applying torque to the fastener. It is normal to have a tight fit. For the most part our M8 bolts are a 5mm Allen bit, our 3/8-16X4" bolts are 7/32 and our M10 bolts are 5.5 or 6mm bits. Use care not to confuse the 7/32 and the 5mm bits as they are close in size.



1. If applicable, remove factory OEM front skids

2019-2023 Chevy 2500 Engine Skid Plate Install Guide



2. Grab C2500 4G ENG Plate A. This plate will replace the factory plastic skid. The front skid will mount in the 5 circled holes using the included M10 button head bolts. Leave bolts loose to install C2500 4G ENG Plate B. Note: our M10 button head bolts will use either a 6mm or 5.5 mm Allen bit depending on the brand. Ensure you use the correct bit to avoid stripping bolts.





2019-2023 Chevy 2500 Engine Skid Plate Install Guide

3. C2500 4G ENG Plate B will slide between C2500 4G ENG Plate A and the frame of the truck. The rear of the plate will secure using 2 M10 button head bolts that will thread into the OEM pre-threaded holes.
4. If installing with Talons Garage transmission skid, leave the rear of C2500 4G ENG Plate B bolts loose to allow transmission skid to be installed. If installing front skid plate alone, you can go back and tighten all the bolts now. Be sure to come back and check bolts for tightness in 100 miles, and periodically thereafter.

Enjoy your new protection, and don't forget to take a photo to share on your favorite social media platform or forum. We love seeing our products in the wild and it makes our day!

Thank you for your support,
Shaun and Crystal