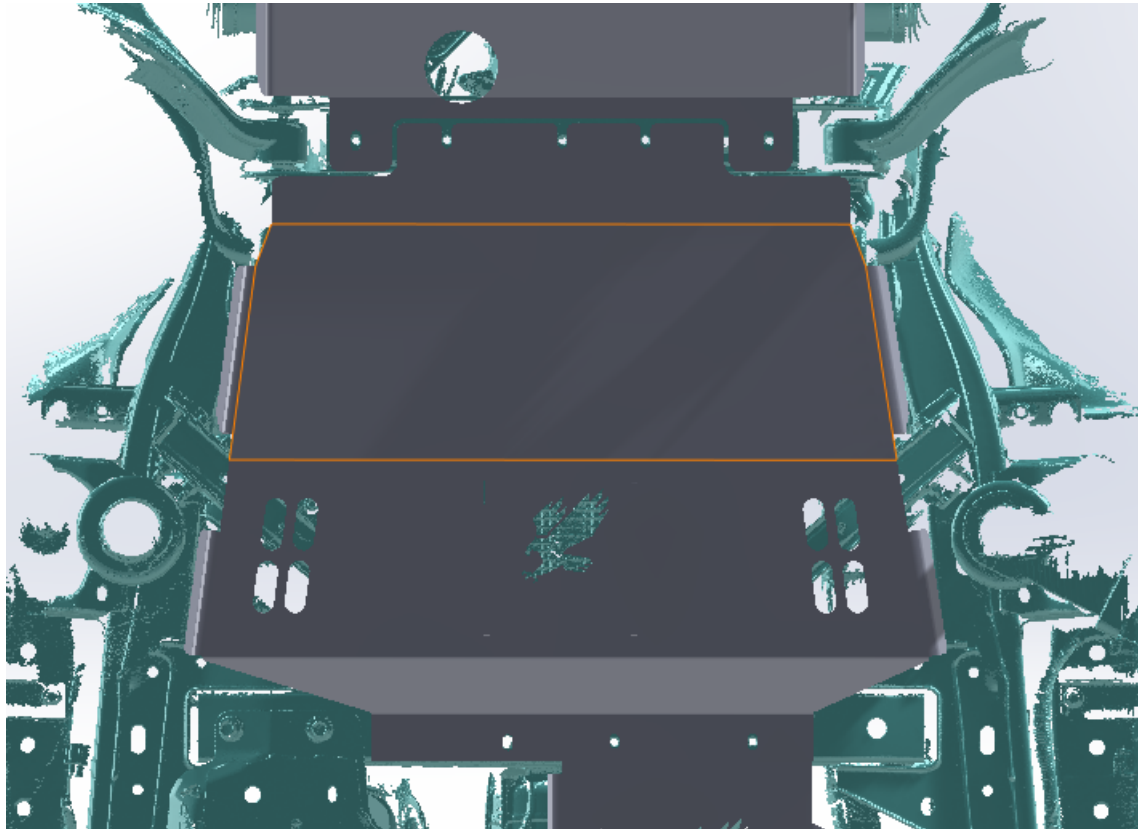


Bronco Transmission Skid Plate Install Guide



Hardware	QTY
M10x40mm button head bolt	6
M10 Washers	6
¼" Aluminum Spacers	12
M10 clip nut.	1

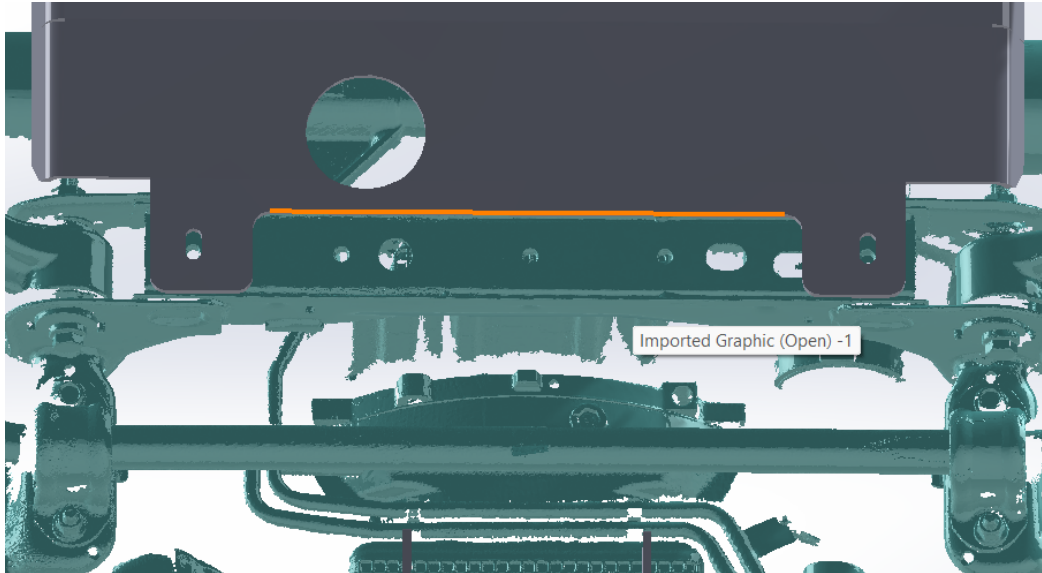
Tools Required:

6mm Allen head driver

15mm socket

Bronco Transmission Skid Plate Install Guide

1. If factory OEM skids are installed, and only transmission plate is being installed remove transfer case skid plate and remove engine/ differential skid plate.



2. Install transmission skid plate front bolts, spacers and washers. On the crossmember ahead of the transmission there are 5 threaded holes. The transmission plate will use the 3 center holes. You will use one 10mmx40mm bolt, two ½" spacers and one 10mm washer on each hole. The outer two holes will be used either by the talons garage front plate, or the OEM factory front plate.

Bronco Transmission Skid Plate Install Guide

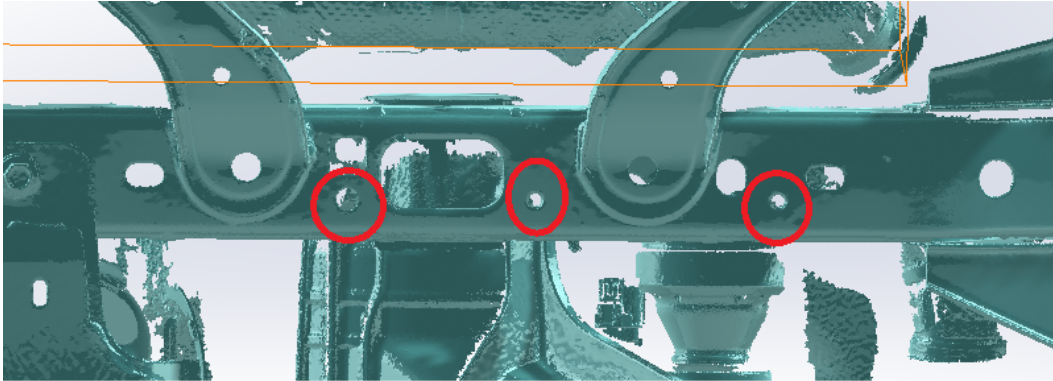


3. Spacers will go between the transmission plate and the frame. When installing at Talons we will gently guide the plate on the edge of the spacer, use the front of the plate to lift it up then slide the plate onto the bolts.

Alternatively, you can install the Bolt and spacers without the washer, then later come back and carefully remove the bolt, install the washer and then reinstall the bolt.

4. Once the front of the plate is in position, you can start a bolt at the rear of the plate to help hold it into position. If installing a talons garage Transfer Case plate, refer to the install guide at this time.

Bronco Transmission Skid Plate Install Guide



5. Note holes used to install rear of transmission skid. The two holes to the right are threaded. The hole on the left will require install of a nut clip.



6. Install included M10 Clip nut in rectangular hole above. The bolt will go through the circle hole shown below the rectangular hole.
7. Install rear of transmission plate. If installing with transfer case plate, see that install guide now. Otherwise install the 3 M10x40mm bolts into the rear of the plate with 2 ¼" spacers between the transmission plate and the frame on each bolt.
8. Tighten all bolts and enjoy your new protection.

NOTE: If installing with Factory OEM transfer case plate, the transfer case plate can be installed on top of, or below the transmission plate depending on user preference. Please see photos below.

Bronco Transmission Skid Plate Install Guide

