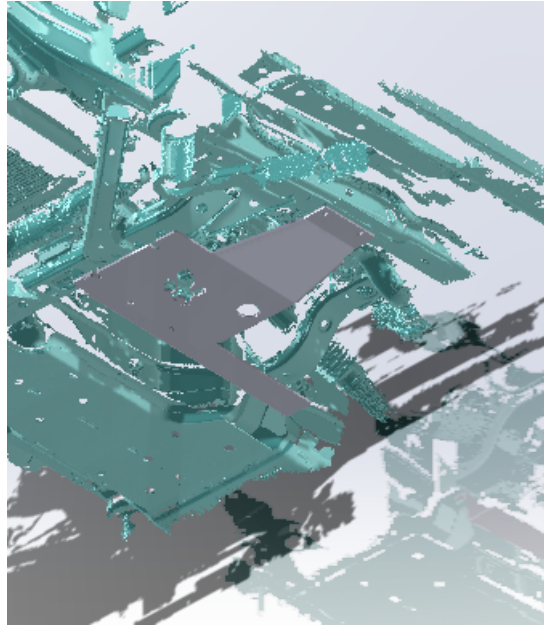


## Bronco Transfer Case Skid Plate Install Guide



| Hardware                  | QTY | Hardware    | QTY |
|---------------------------|-----|-------------|-----|
| M10x40mm Button head bolt | 3   | M10 Washers | 3   |
| M8x40mm Button head bolt  | 4   | M8 washers  | 4   |

### Tools:

6mm allen head socket

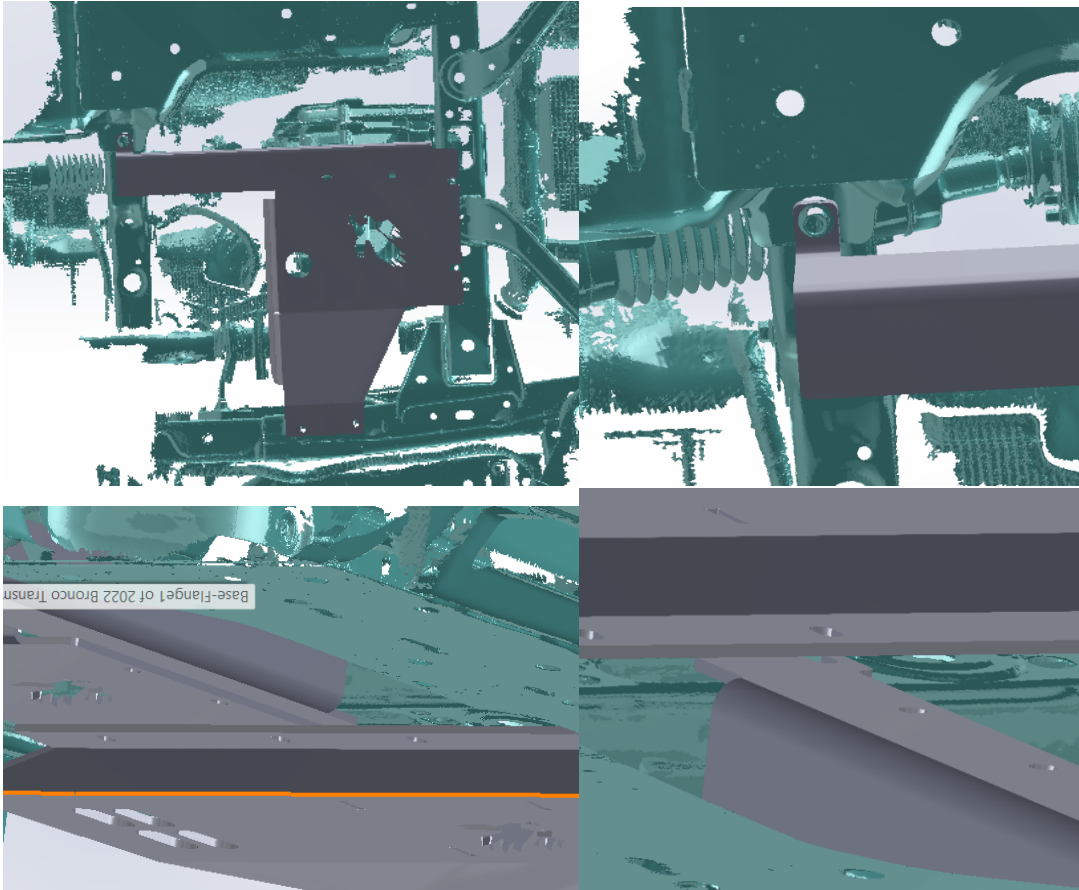
5mm allen head socket

17mm Socket

15mm socket.

1. If equipped, remove factory transfer case skid.
2. If Talons Garage Transmission skid is already installed, loosen front and rear bolts to allow you to slide the transfer case plate above the transmission plate. To clarify, the transfer case plate and bracket will get sandwiched between the transmission plate and the frame.

## Bronco Transfer Case Skid Plate Install Guide



3. Ensuring fuel tank is properly supported, remove the fuel tank skid or strap bolt to allow install of transfer case cross member. Install Transfer Case Cross member. Transfer Case Brace will install to this bolt and slide above the transmission plate.  
CAUTION: If fuel tank is not property secured prior to removing the bolt, fuel tank may fall on you, which may result in death. Proper care is required to support fuel tank.

## Bronco Transfer Case Skid Plate Install Guide



4. Slide riv nut plate into one of the rectangular holes. Align the riv nuts with the circular holes shown above.





## Bronco Transfer Case Skid Plate Install Guide

5. Observe photos above. Note where the transfer case plate will mount too. The red circles help identify holes used. The hole on the left will have both the transfer case brace and plate sandwiched between the frame and the transmission skid plate. The hole on the right will need a spacer between the transfer case plate, and the frame. The transmission plate will then be installed below the transmission plate. Below we have outlined the correct order for each of the transfer case holes. Note: 2.3L 4 Cylinder Broncos will have a slightly different cross member but will have the same holes.

Right hole shown above - Frame>1/4" Spacer>Transfer Case Plate>Transmission Plate> M10 Washer> M10 Button head bolt.

Left hole shown above - Frame>Transfer Case brace>Transfer Case Plate> Transmission Plate> Washer> M10 button head bolt.

6. Slide the transfer case plate above the transmission plate and mount. The holes that overlap with the transmission plate will use M10x40mm bolts. The holes towards the frame rail will use M8x40mm bolts and the holes on the transfer case brace will use M8x40mm bolts.
7. Tighten all bolts down. Do not forget to tighten the transmission bolts. Enjoy your new added protection!