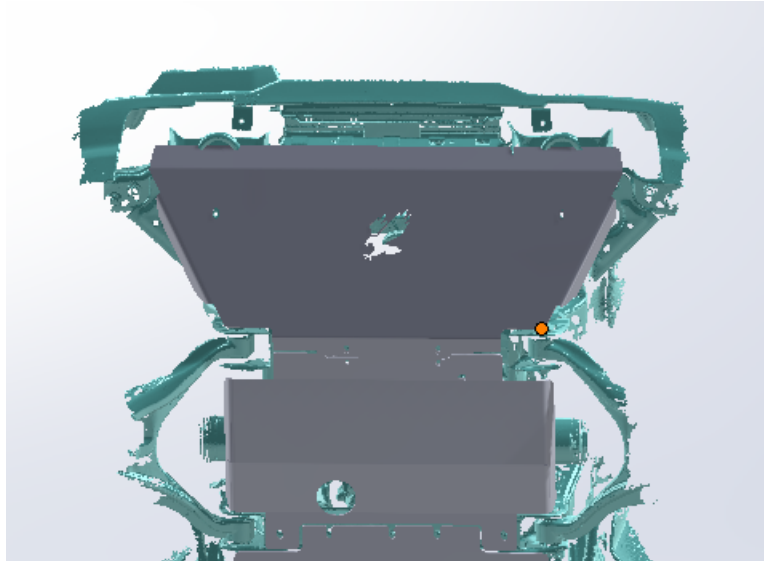


Bronco Engine Skid Plate Install Guide



Hardware	QTY	Hardware	QTY
M10x40mm Button head bolt	6	¼" Aluminum Spacers	4
M8x25mm button head bolt	2	M10 Washers	6
M8x40mm Button head bolt	2	M8 washers	4

Tools Required for Install

6mm allen head

5mm allen head

14mm Socket

15mm Socket

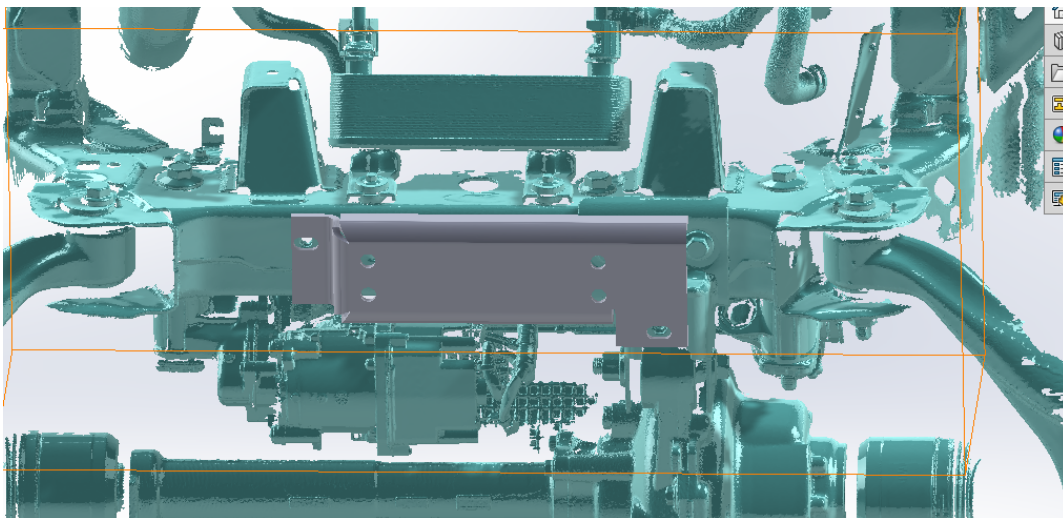
Ratchet

Caution: We do not recommend the use of impact drivers or guns when removing or installing our products. While several customers have no issue installing our products, professional

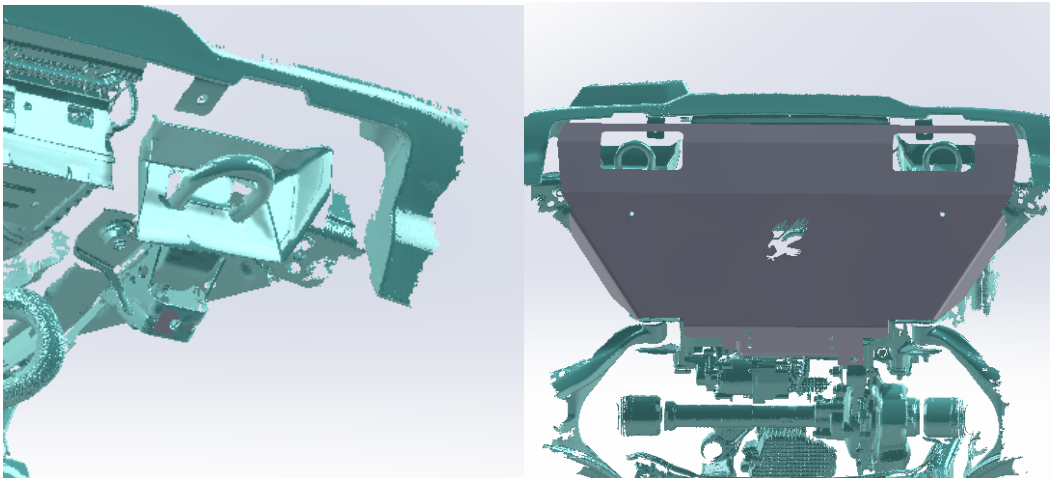
Bronco Engine Skid Plate Install Guide

assistance is recommended for installation. Not responsible for any damage that occurred during the installation process or due to improper installation.

1. If equipped, removed factory skid plates, or plastic covers. The bolts under the bronco should be 15mm. It is possible that the bolts on the front area of the skid are a smaller 14mm head.



2. Mount Front Plate Main mount to frame using 2 M10x40mm button head bolts.



3. Mount Front Skid Plate to front mount, and to OEM mount points on intercooler Brackets. Having a helper to hold the plate up while you start the bolts helps. I found holding it through the eagle cutout and getting either the top or bottom bolts started helps.

Bronco Engine Skid Plate Install Guide

The 25mm M8 bolts will go on the driver side, and the 40mm M8 bolts will go on the passenger side. M10 bolts will go on the top two mounts. Plastic bumper skid shown, modular front bumper install is the same.



4. Engine skid will mount to the bracket on the front, and to the engine cross member on the rear. There are 5 pre threaded holes in the crossmember. The rear of the engine skid will mount on the outer two holes. Two ¼" aluminum spacers will go on each side of the engine skid.
5. Tighten down all plates. Enjoy your skid plates and added protection.