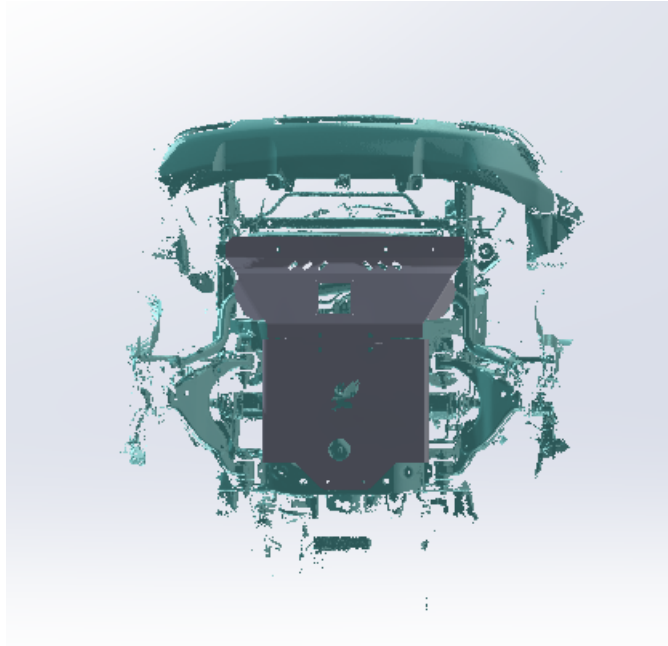


## 4Runner/GX460 Engine Skid Plate Install Guide



Hardware	QTY	Hardware	QTY
M10 JIS 40 mm Bolt	2	¼" Aluminum Spacers	4
M12x30 mm button head bolt	4	3/8 Fender Washers	4
3/8-16 4" Bolt	2	M12 washers	4
3/8-16 Nylon lock nuts	2	M5 flat washers	8
M5 bolt	8	M5 lock washers	8

**Tools:**

7/32 Allen head

M5 Allen head

14mm wrench or socket

12mm wrench or socket

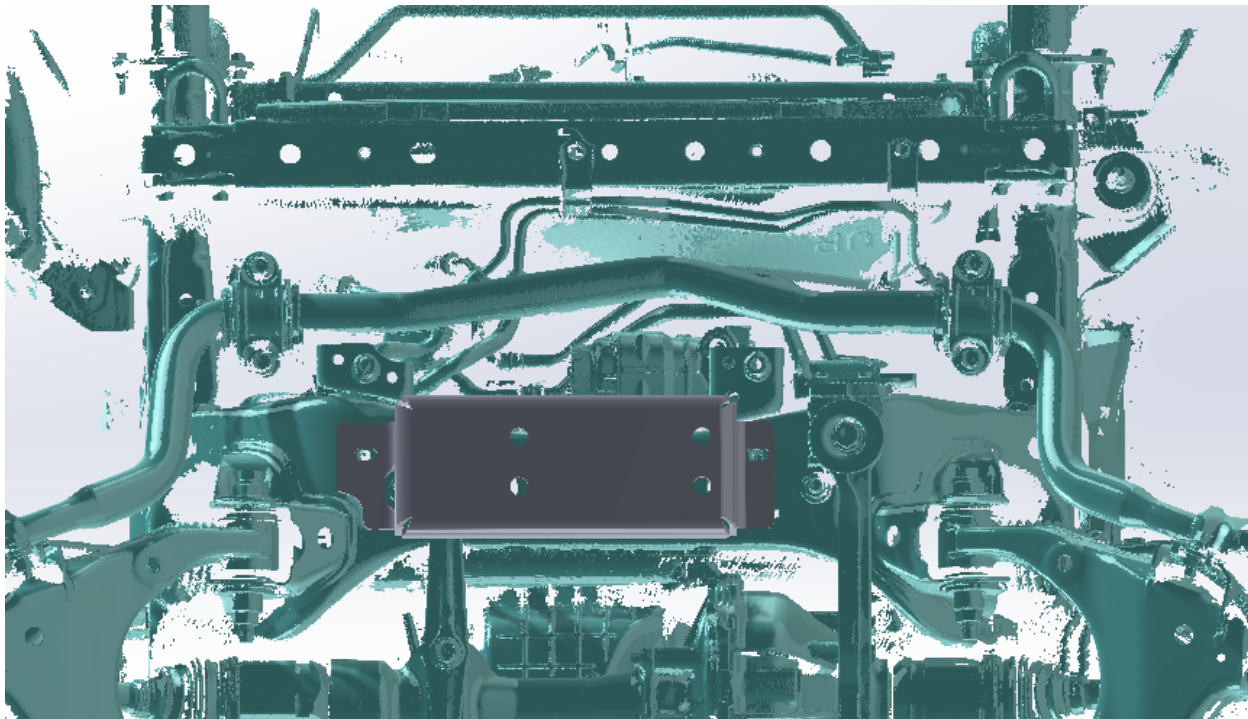
17mm socket

## 4Runner/GX460 Engine Skid Plate Install Guide

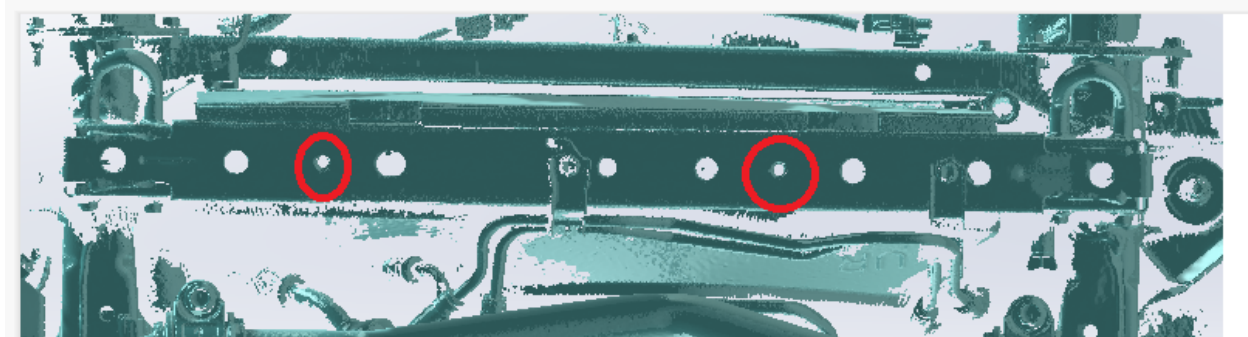


1. Remove factory OEM skid plates and skid plate mounts.

## 4Runner/GX460 Engine Skid Plate Install Guide

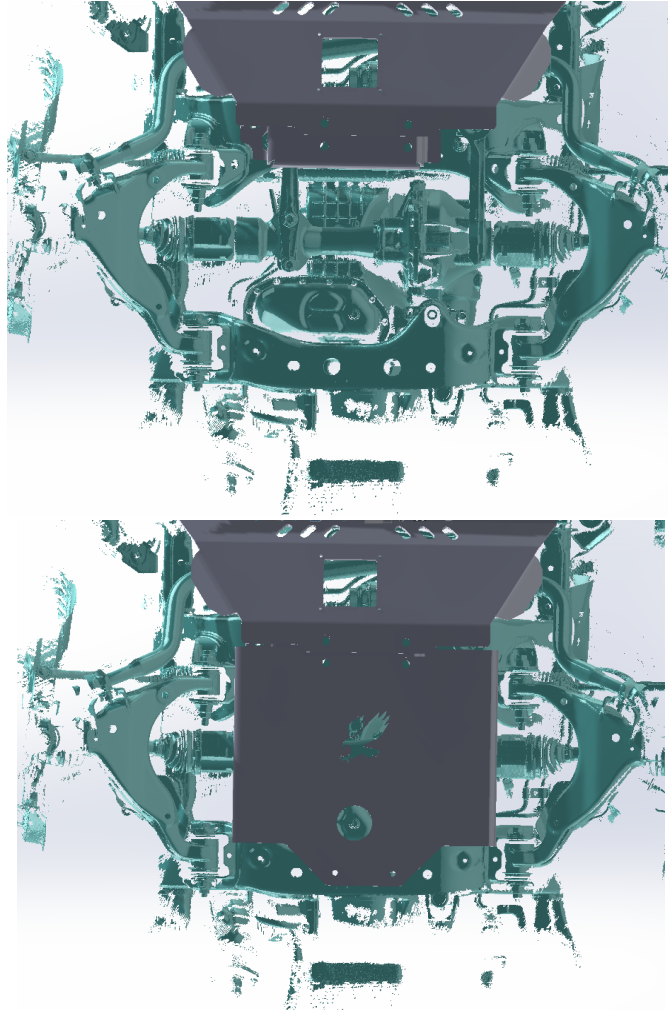


2. Install front skid plate main mount. You will reuse two of the 17mm bolts removed from the ski plate mounts.



3. Install the front skid plate to the mount. You may need a helper to help hold it. The bottom two holes will attach to the skid plate mount and will take 2 M12-30 mm Bolts. The front holes of the front skid plate will mount on the pre threaded holes on the lower radiator support. You will use two of the 1/4" Aluminum spacers between the skid plate and the radiator support. This is due to some 4Runner and Lexus 460's having lines secured to the bottom of the radiator support.

## 4Runner/GX460 Engine Skid Plate Install Guide



4. The engine mid plate will now be installed on the engine mount using the remaining 2 M12x30mm bolts. The rear of the engine plate will be installed using the 3/8-16 4" long bolts, washers, and Nylon lock nuts.
5. Tighten all bolts going from front to rear. Enjoy your new protection.