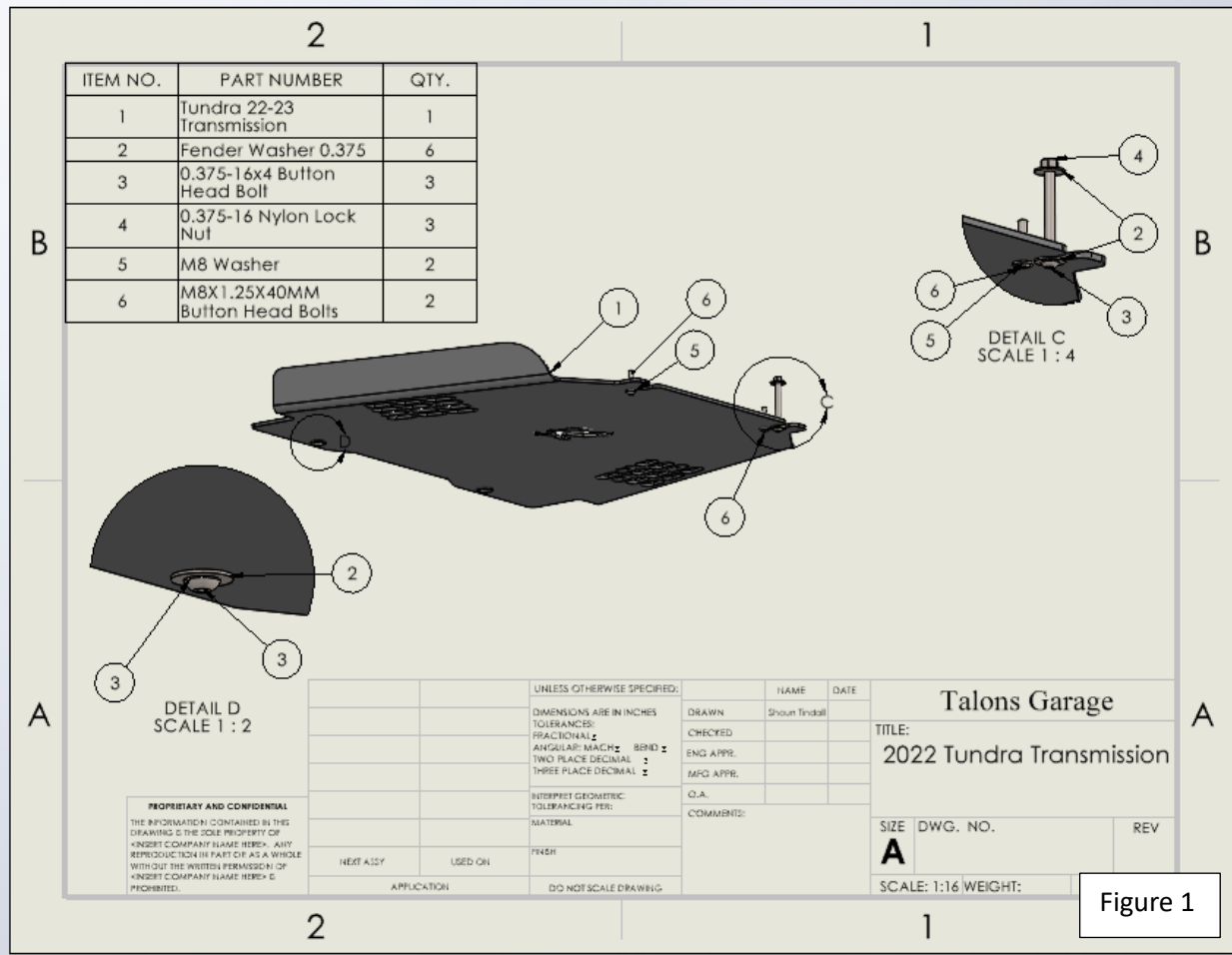


## 3<sup>rd</sup> Gen Tundra Transmission Skid Plate Install Guide

Please note: This install guide is used for the hybrid and non-hybrid 2022+ Tundra and 2023+ Sequoia.



### Tools Required:

7/32 Allen Wrench

5mm Allen Wrench

9/16 Wrench

Bit Driver



## 3<sup>rd</sup> Gen Tundra Transmission Skid Plate Install Guide

Installation is to be done at your own risk. Talons Garage is not responsible for any damage that occurs during or after installation. Professional installation is recommended. Check for all included hardware and parts before starting install.

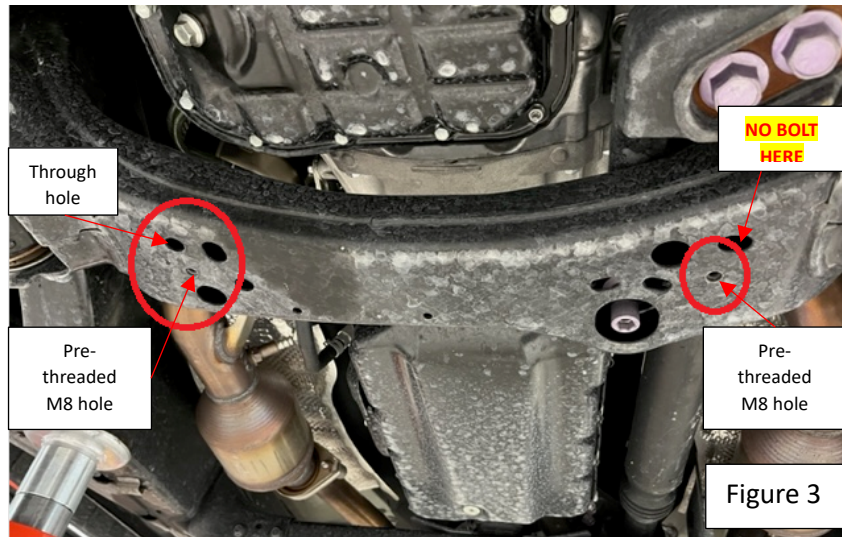
We know for a some of users this might be their first mechanical project. Cool, and great choice! A few notes about button head bolts for those who have not used them before. We recommend using a high-quality Allen head bit for installing our button head bolts. This will dramatically prevent the chances of stripping the heads. We also strongly discourage the use of impact tools. Ensure the Allen bit is seated into the bolt fully before applying torque to the fastener. It is normal to have a tight fit. For the most part our M8 bolts are a 5mm Allen bit, our 3/8-16X4" bolts are 7/32 and our M10 bolts are 5.5 or 6mm bits. Use care not to confuse the 7/32 and the 5mm bits as they are close in size.

1. Gather all tools and supplies. Ensure truck is lifted and securely placed on jack stands or ramps per users' preference.
2. When installing with TRD pro plate, remove TRD pro plate at this time and set aside.
3. If you have a hybrid Tundra or Sequoia, you will install the wings to the vertical flanges of the shield first (shown below). You will use the 6 M8 x 25 mm bolts, washers, and nuts.

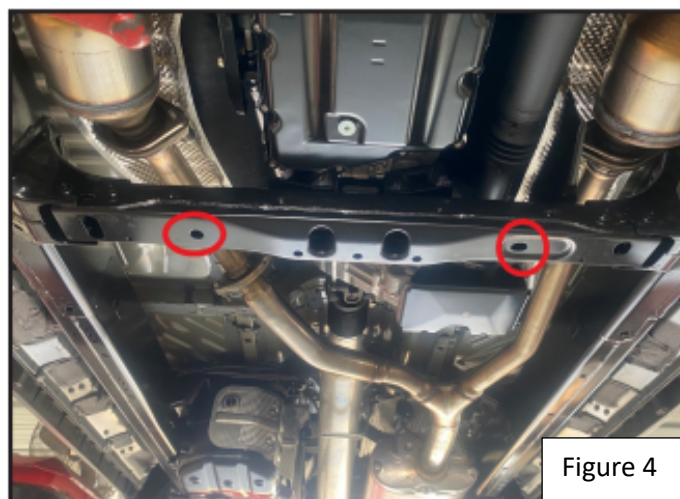


Figure 2

## 3<sup>rd</sup> Gen Tundra Transmission Skid Plate Install Guide



4. Locate the two M8 pre threaded holes. Clean out holes to ensure that the included M8 bolts will thread in easily.
5. Locate the through hole on the engine cross member on the passenger side. Take the 3/8-16X4" bolt and install through this hole. You will use a fender washer and nylon lock nut on top, and a fender washer on the bottom. You can use this hanger bolt to help support the front of the plate. **THE DRIVERS SIDE ALSO HAS A THROUGH BOLT. DO NOT INSTALL A BOLT THROUGH THIS HOLE AS IT IS VERY CLOSE TO THE DRIVE SHAFT AND DAMAGE CAN OCCUR.**
6. Install the rear of the plate with the included 3/8-16x4" button head bolts. The rear holes are circled in the image below.



## 3<sup>rd</sup> Gen Tundra Transmission Skid Plate Install Guide



7. Now that the three hanger bolts are installed. You can install the M8x1.25X40mm bolts into the two front holes of the plate. Do this before tightening down the other three bolts to ensure they are lined up. If installing with the TRD pro plate, you will want to put in the two M8 bolts, tighten the other three bolts and then remove the two M8 bolts to install the TRD pro plate front plate. Be sure to shift the transmission plate to the drivers' side as far as possible when installing.

## 3<sup>rd</sup> Gen Tundra Transmission Skid Plate Install Guide



8. If installing with TRD pro plate, there is a hanger tab on the TRD pro plate that will need to be bent down to facilitate install. You can reinstall TRD pro plate at this time.

Enjoy your new protection! Be sure to take a photo and upload it on Instagram, Facebook, or your favorite forum. We love seeing our products out there and it makes our day every time!

Thank you for your support,

Shaun and Crystal