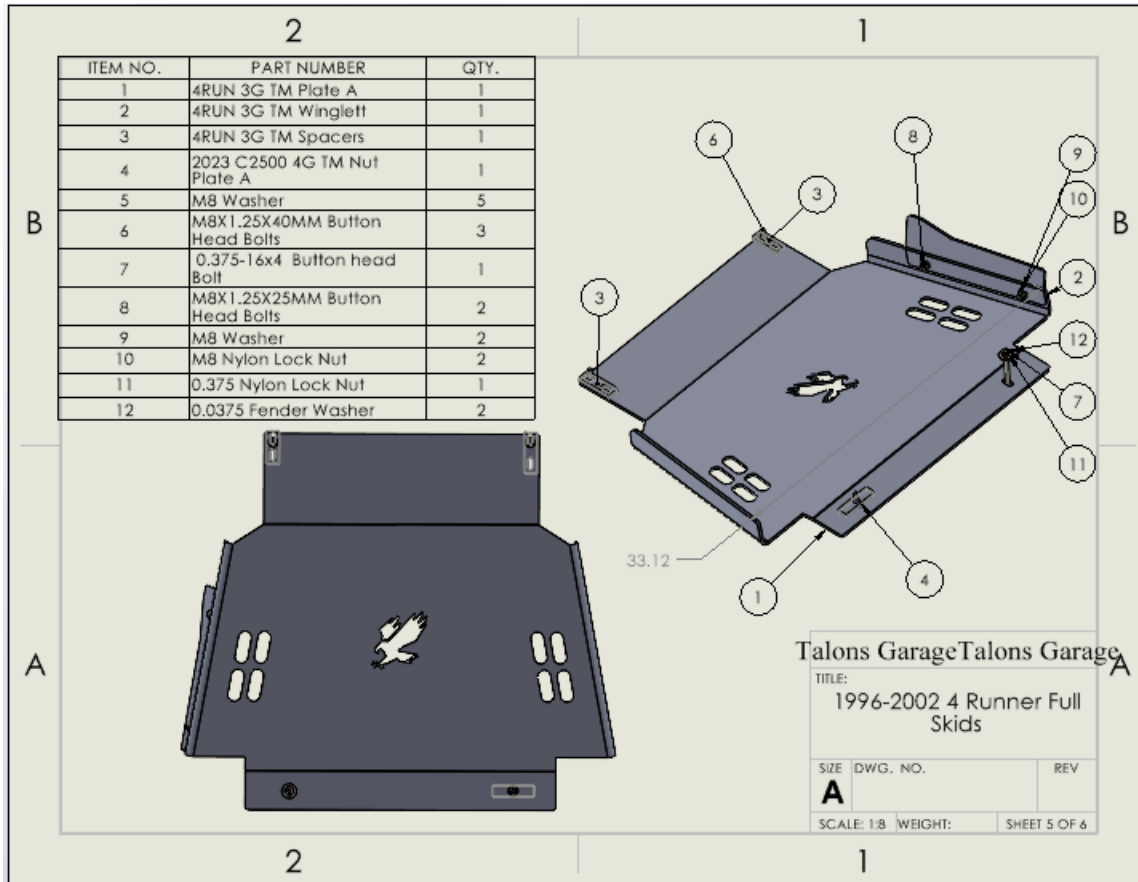


1996-2002 4Runner Transmission Skid Plate Install Guide



Tools Required	
5mm Allen bit	7/32 Allen bit
12mm wrench	14mm wrench

Installation is to be done at your own risk. Talons Garage is not responsible for any damage that occurs during or after installation. Professional installation recommended. Check for all included hardware and parts before starting install.

We know for a lot of users this might be their first mechanical project. Cool, and great choice! A few notes about button head bolts for those who have not used them before. We recommend using a high quality allen head bit for installing our button head bolts. This will dramatically prevent the chances of stripping the heads. We also strongly discourage the use of impact tools. Ensure the allen bit is seated

1996-2002 4Runner Transmission Skid Plate Install Guide

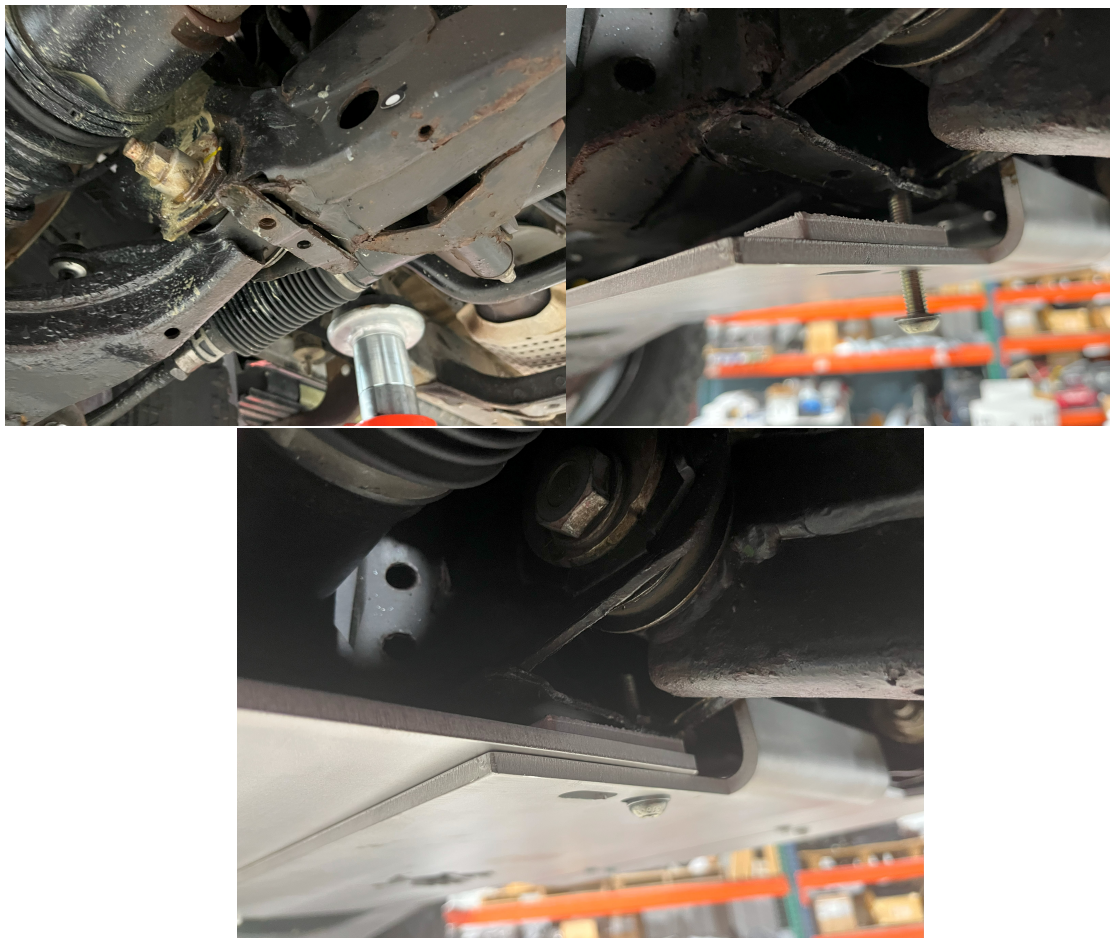
into the bolt fully before applying torque to the fastener. It is normal to have a tight fit. For the most part our M8 bolts are a 5mm allen bit, our 3/8-16X4" bolts are 7/32 and our M10 bolts are 5.5 or 6mm bits. Use care not to confuse the 7/32 and the 5mm bits as they are close in size.

1. If installing transmission skid with engine skid, refer to engine skid install guide first. If installing with just engine skid carefully jack up the 4Runner and gather parts for installation.



2. Install TM Winglet on passenger side flange of transmission plate. The winglet will bend towards the outside of the plate.

1996-2002 4Runner Transmission Skid Plate Install Guide



3. If installed with Engine skid mount rear bolts, and TM Spacers to the rear of the engine skid. The spacers will help space the transmission plate below the steering rack for clearance. The spacers are different for each side and will need to match the bolt hole profile on the plate. The correct order of parts from the ground to the frame will be Engine Skid Plate B → Transmission Skid → Plate → Spacers → Frame. The photos above show engine skid plate B installed with the spacers, and the transmission plate installed with the spacer and engine plate.

1996-2002 4Runner Transmission Skid Plate Install Guide



4. Transmission Plate A will slide into location. Note correct order of installed products above. It can be a little tricky to get the front of the transmission plate between engine plate B and spacer, but it is possible. Once the front bolts are in the slot, you can secure the driver side rear of the plate with one of the 3/8-16x4" button head bolts. This bolt will feed through the hole in the frame circled above and is secured on the top of the frame crossmember with a 3/8-16 nylon lock nut. The 3/8" bolt will use a nylon lock nut and the large 3/8" fender washers. On the



1996-2002 4Runner Transmission Skid Plate Install Guide

passenger side you will feed a nut plate into the hole circled, which will accept a M8x40mm button head bolt.

5. Note: If installing with transfer case plate refer to that install guide now.
6. Once all bolts are installed, tighten from front to rear. Enjoy your new skid plate! Don't forget to take a photo of your new skid plates and upload them to your favorite social media platform. We love seeing our plates in the wild.

Thank you for your support,

Shaun and Crystal