

3rd Generation Toyota Tundra Engine Skid Plate Install Guide



Install is to be done at own risk. Talons Garage is not responsible for any damages that occurs during or after install. Professional installation recommended.

Kit Contents:

Hardware	QTY
M8 1.25x40mm Bolts	6
3/8X1.5" Fender washers	6
1/4" Aluminum Spacers	4

Tools Required:

5 mm Allen head key or socket

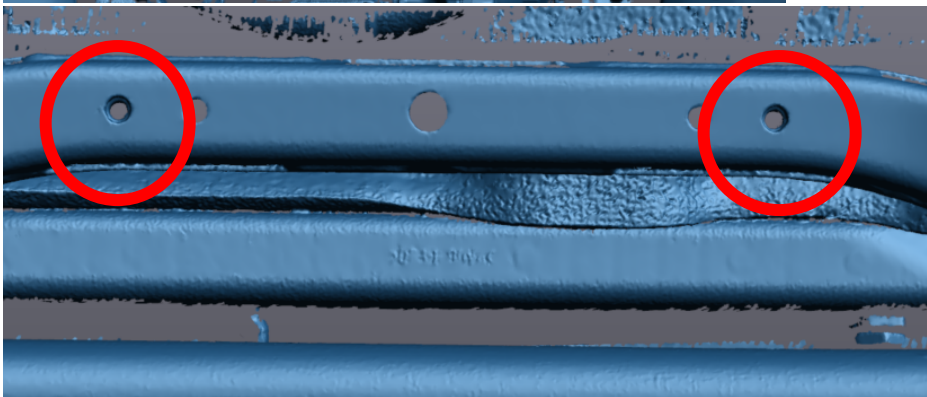
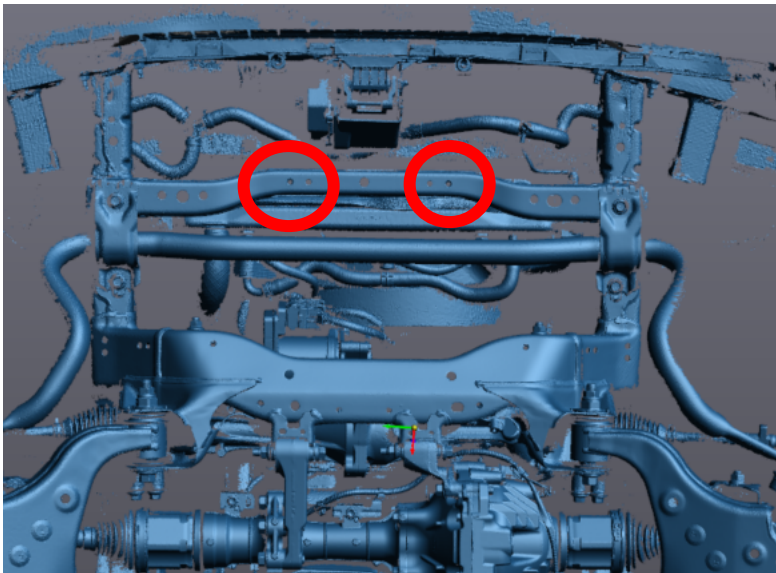
3/32 Allen head key or socket

10mm wrench

12mm wrench

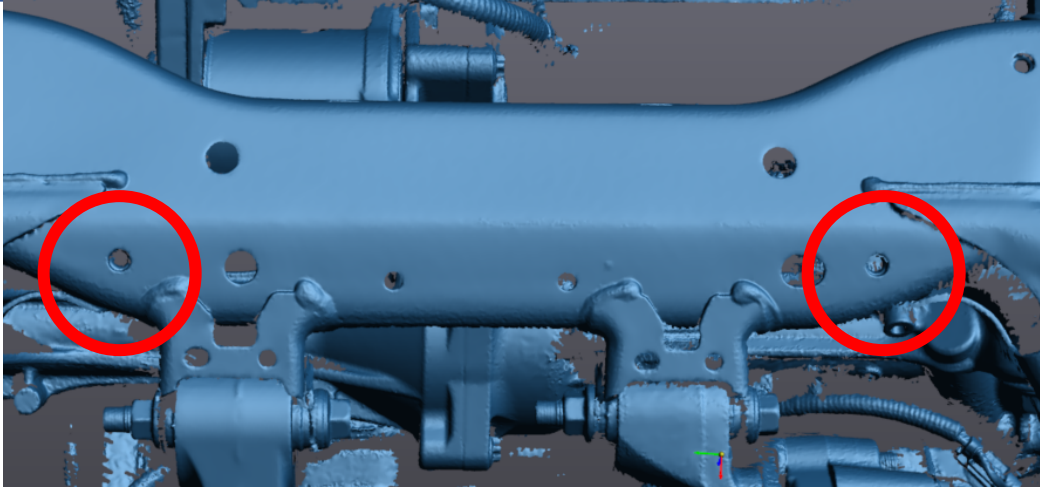
3rd Generation Toyota Tundra Engine Skid Plate Install Guide

1. If equipped lower factory automatic air dam, follow procedure in owner manual to lower.
2. Remove factory felt liner cover. Removal should consist of 4 10mm bolts.
3. If Talons Garage Transmission skid plate is already installed, remove the 2 M8 button head bolts from the front of the skid plate with a 5mm allen head socket. Also remove the 3/8-16 5" long bolt using a 7/32 allen head socket.

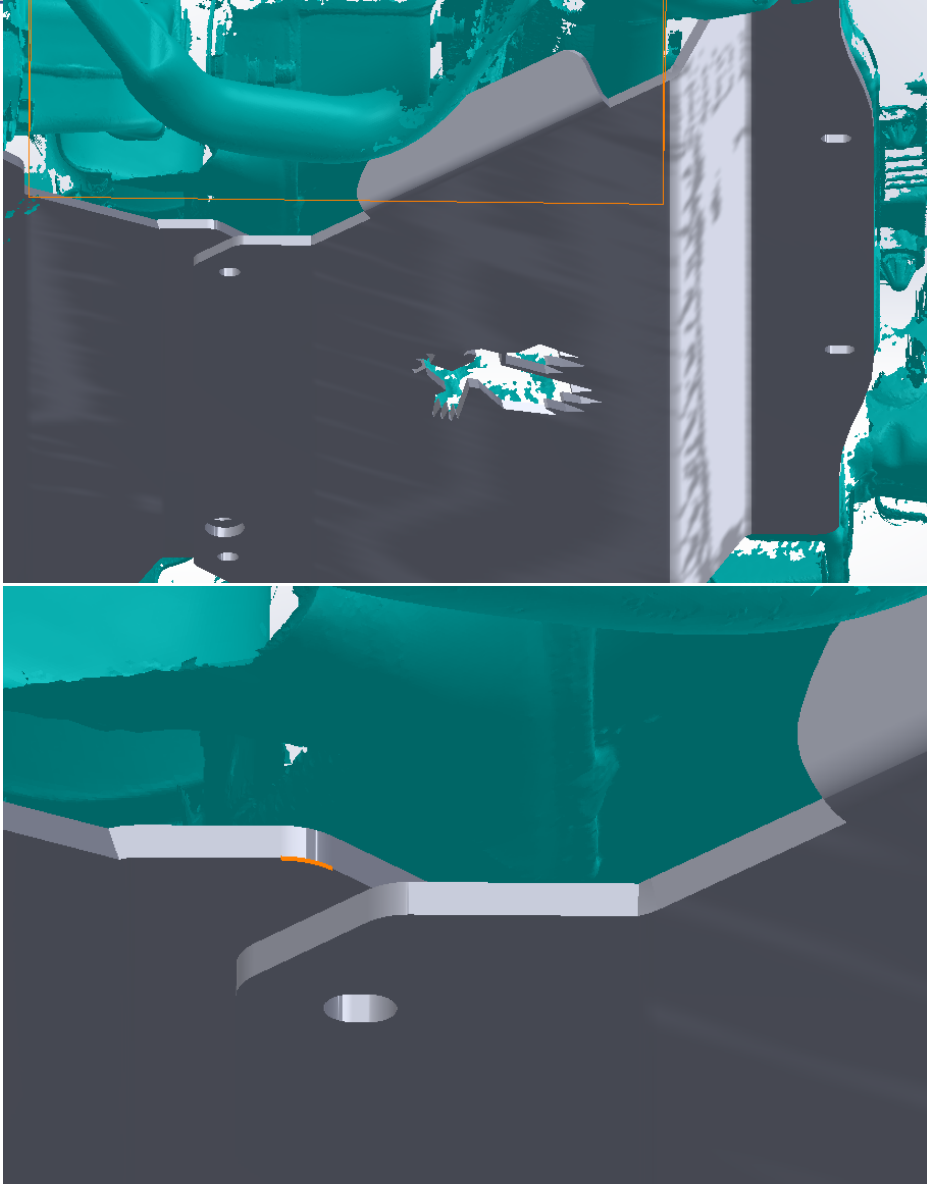


4. Install the front part of the engine skid plate first. The two threaded holes on the front will line up with two threaded holes on the radiator support. Two round aluminum spacers will go between the shield the radiator support on each hole. Get the M8 bolts started with several threads and carefully let the front plate hang down. We found it easier to install the shield without the spacers initially and come back and place the spacers after the other plates and bolts are installed.

3rd Generation Toyota Tundra Engine Skid Plate Install Guide



3rd Generation Toyota Tundra Engine Skid Plate Install Guide



5. Install the second piece of the engine skid under engine area into the holes shown above using two additional M8 button head bolts. The front piece of the engine skid will go below the second piece of the engine skid. The rear part of the engine skid will go below the transmission skid plate if installed.

3rd Generation Toyota Tundra Engine Skid Plate Install Guide



6. Install the remaining M8 button head bolts into the rear of the shield. If transmission skid plate was installed, install the 3/8-16-4" long button head bolt. You can get to the nut from the passenger side of the engine skid.