

## 2016-2023 Tacoma Rear Cat Box Install Guide



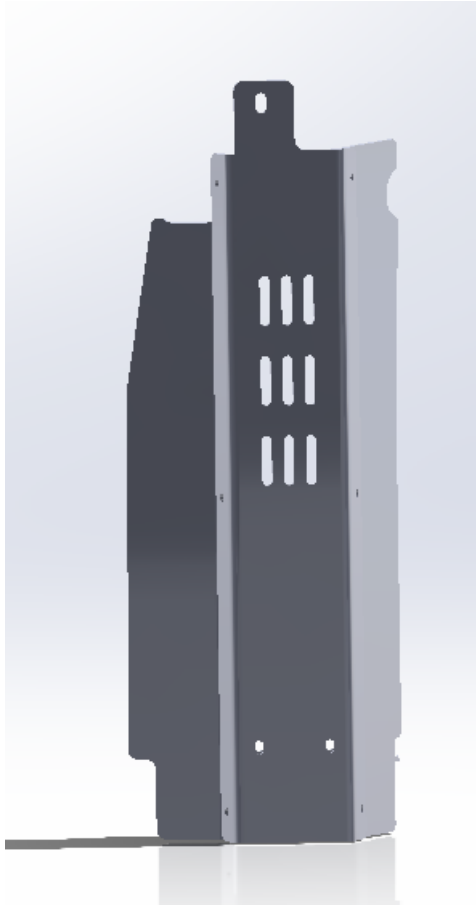
Hardware	QTY	Hardware	QTY
M8 1.25-25mm Button head bolts	6	M8 Washers	16
M8 1.25- 40mm Button head bolts	4	M8 Nylon lock nuts	6
Square Spacer	1	3/8 – 1.5” Fender Washer	2
3/8-16 4” Button head bolt	1	Round Aluminum Spacer	1

## 2016-2023 Tacoma Rear Cat Box Install Guide

### Tools Required:

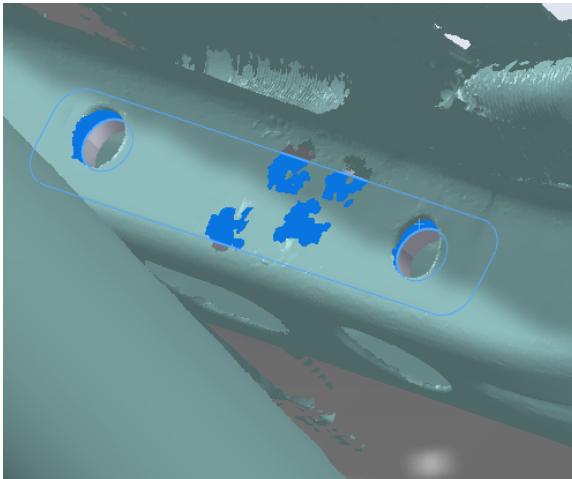
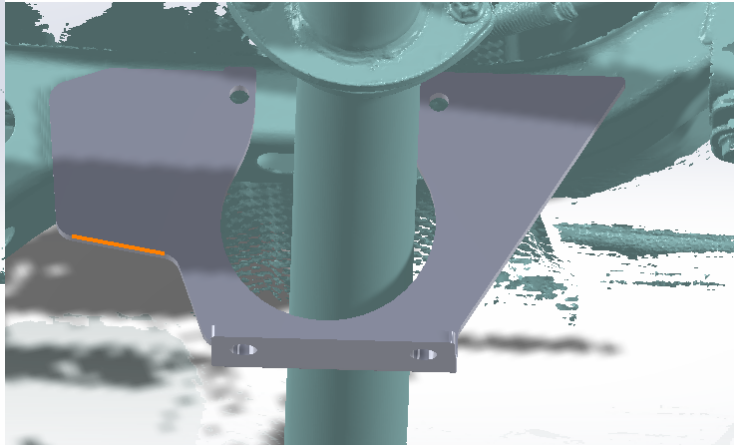
- 5mm Allen head bit
- 7/32 Allen head bit
- 9/16 Wrench
- 13mm wrench

1. If talons garage transmission skid plate is already installed remove it. You can get away with only loosening the rear bolts to get access to the front of the cross member. If installing with talons garage skid plate, install transmission skid plate last.



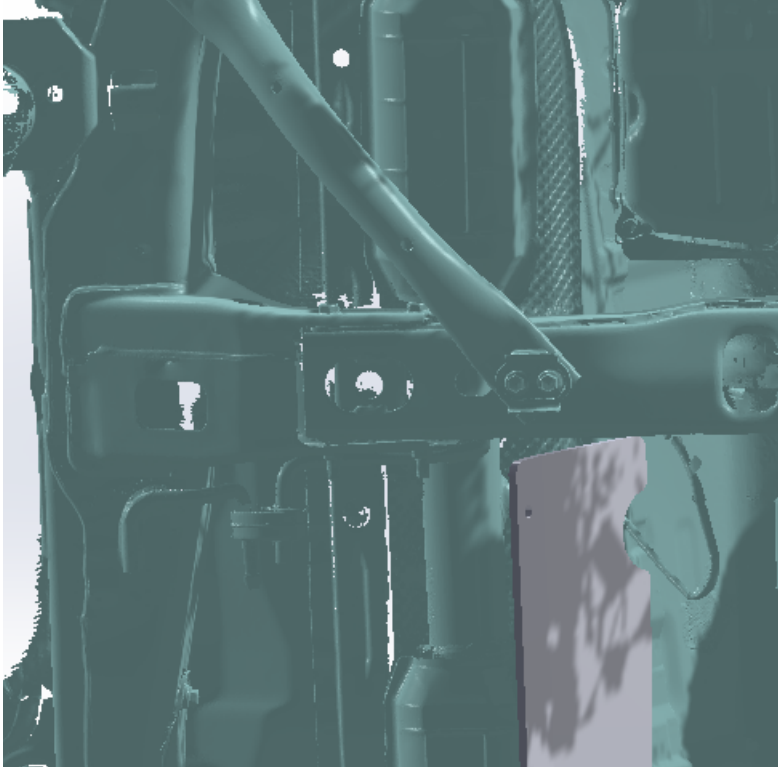
2. Install Wings to the rear cat box with orientation as shown above. Wings will both bend towards the outside. Use the M8-25mm Button head bolts with a washer on each end and the M8 Nylon lock nut.

## 2016-2023 Tacoma Rear Cat Box Install Guide



3. Install cat shield rear brace on cross member as shown. Use 2 M8 1.25 40mm button head bolts and provided riv nut backing plate. Riv nut backing plate will go inside the cross member and allow bracket to be secured to the cross member.

## 2016-2023 Tacoma Rear Cat Box Install Guide

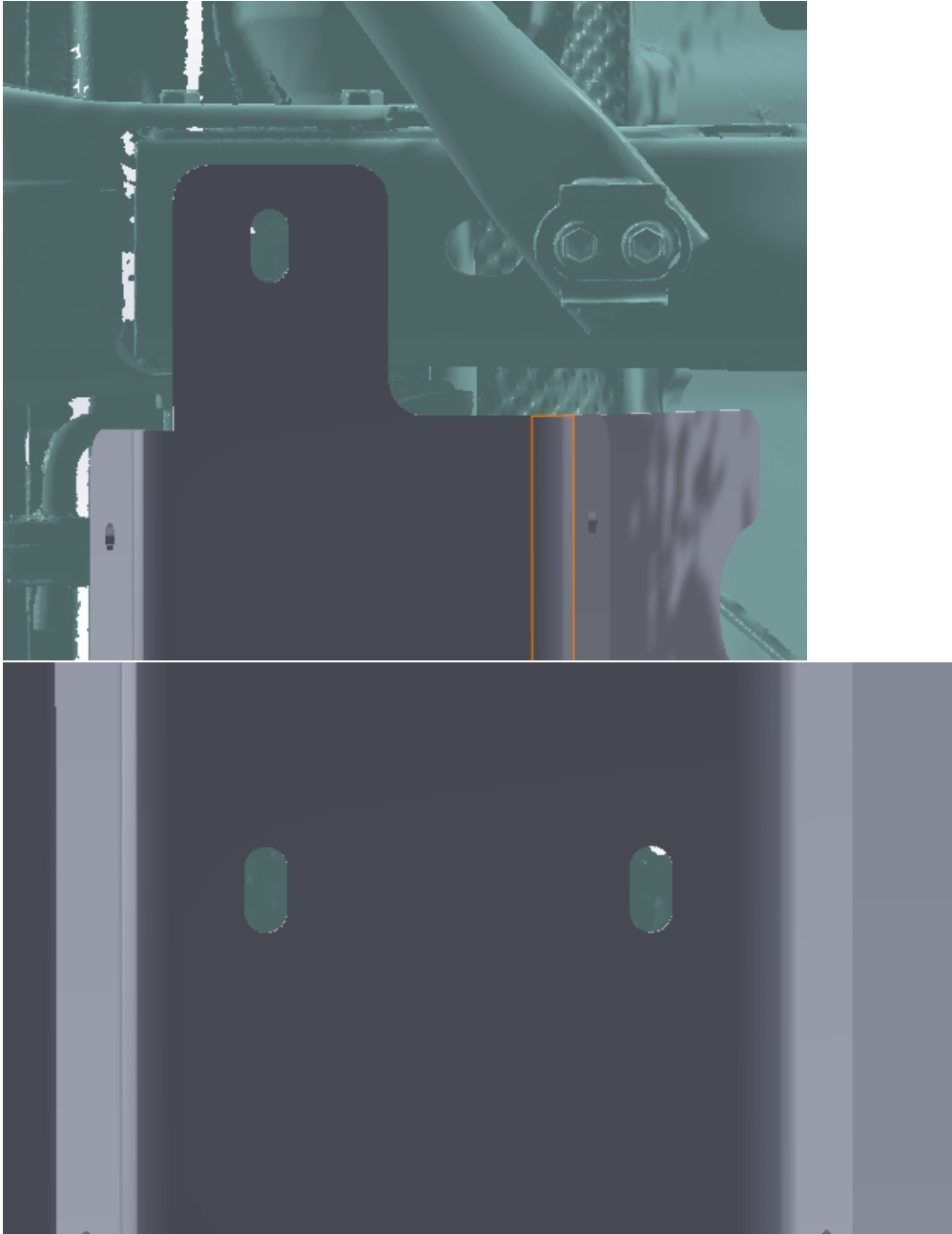




## 2016-2023 Tacoma Rear Cat Box Install Guide



## 2016-2023 Tacoma Rear Cat Box Install Guide



4. Locate the hole pictured above. Maneuver cat box with installed wings to this location. At that point you can screw in the two M8 1.25-40mm bolts into the rear cat box support bracket installed previously. This will help hold the cat box in location while you use the provided 3/8-16 4" button head bolt to go into this hole. The 3x3 square spacer will go between the Tacoma frame, and the rear cat box. Install 3/8 fender washer and



## 2016-2023 Tacoma Rear Cat Box Install Guide

nylon lock nut above.

5. Tighten all bolts. Cat Box installation is completed. Check all bolts 100 miles after install and periodically thereafter.