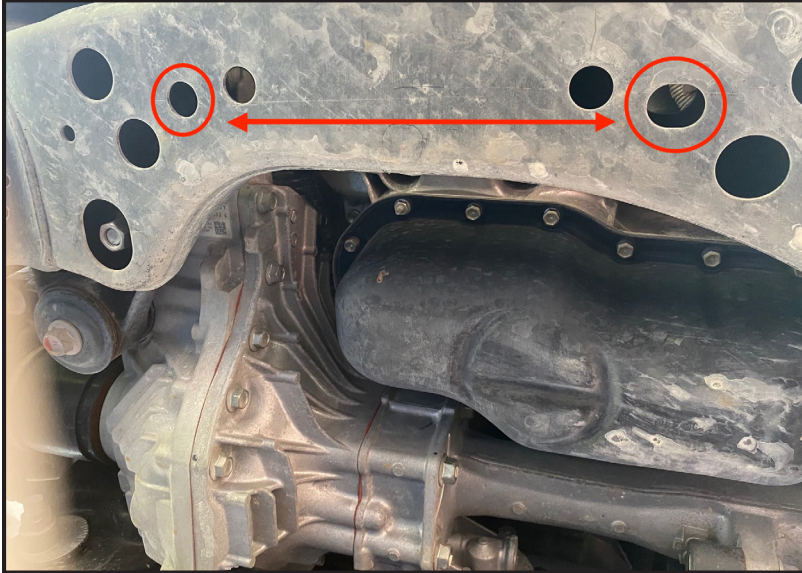


## Tundra - Transmission Skid

Be sure to use lubrication on all stainless steel nuts & bolts to prevent galling.



- 1. Locate the two front mount holes on the engine crossmember. These are the only two through holes.

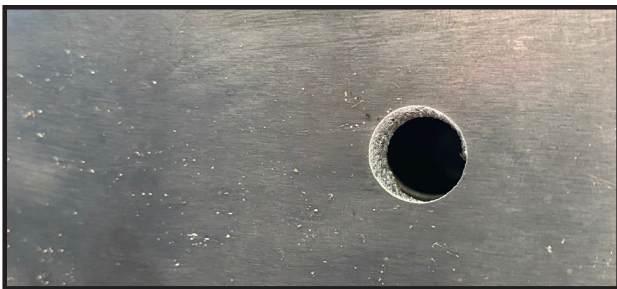


- 2. Install the M12x100mm bolts with the nuts up into the holes from step one. You will use the larger washer on the top. Leave these bolts hanging.

## Tundra - Transmission Skid



- 3. Slide the front of the catalytic converter protection plate over these bolts. It should hold the plate in place.



## Tundra - Transmission Skid



4. Locate the holes on the rear of the plate. The M8x100mm bolts will go through these holes, into the frame. Install the large 3/8" washer on this bolt, with the nut above the frame. If you are installing a transfer case plate with this, be sure to put the 3x3" spacer between the transmission plate and the

5. If you are not installing a transfer case plate, tighten all the bolts at this point. If you are installing transfer case please see transfer case instructions at this time.