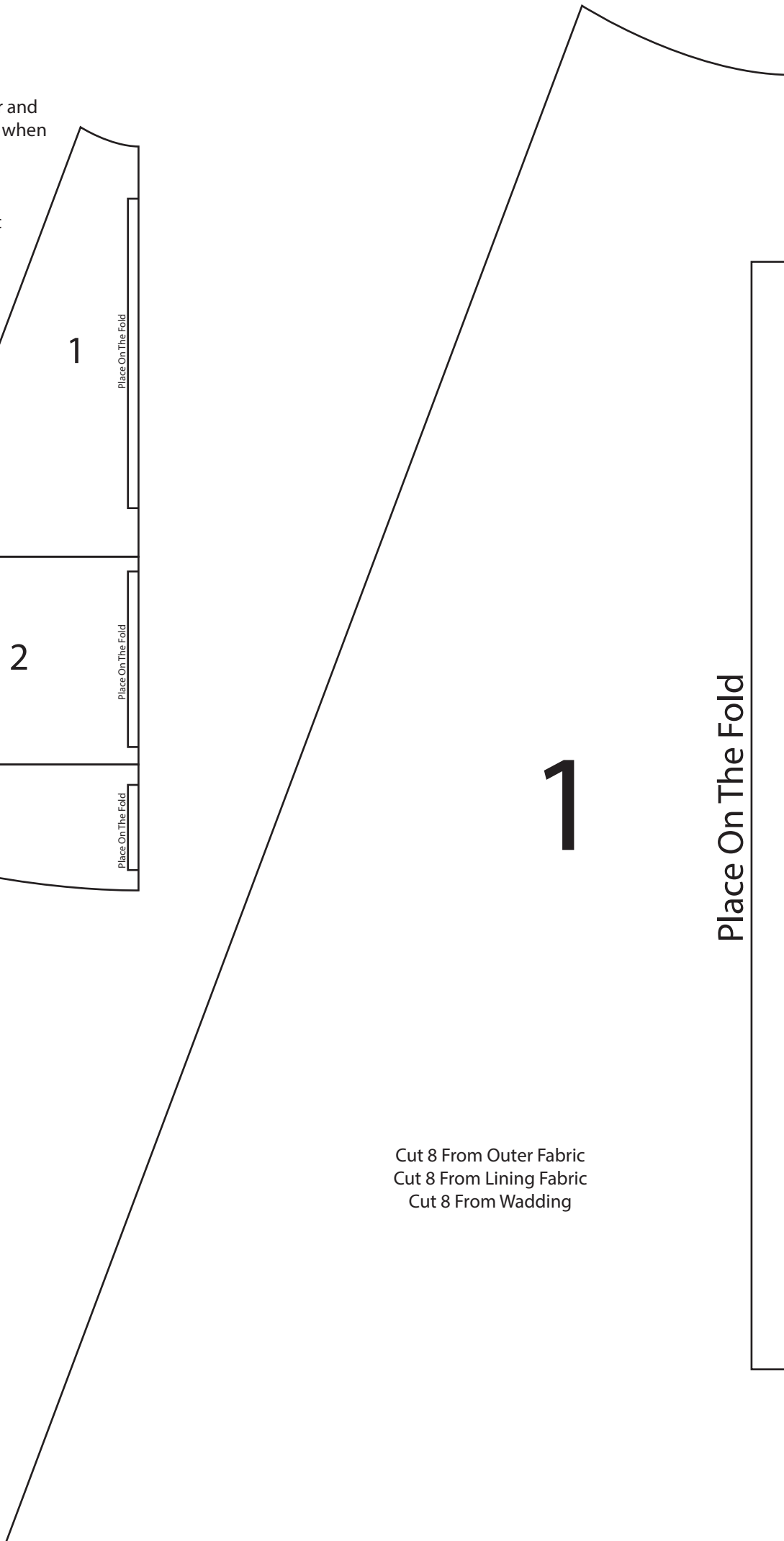
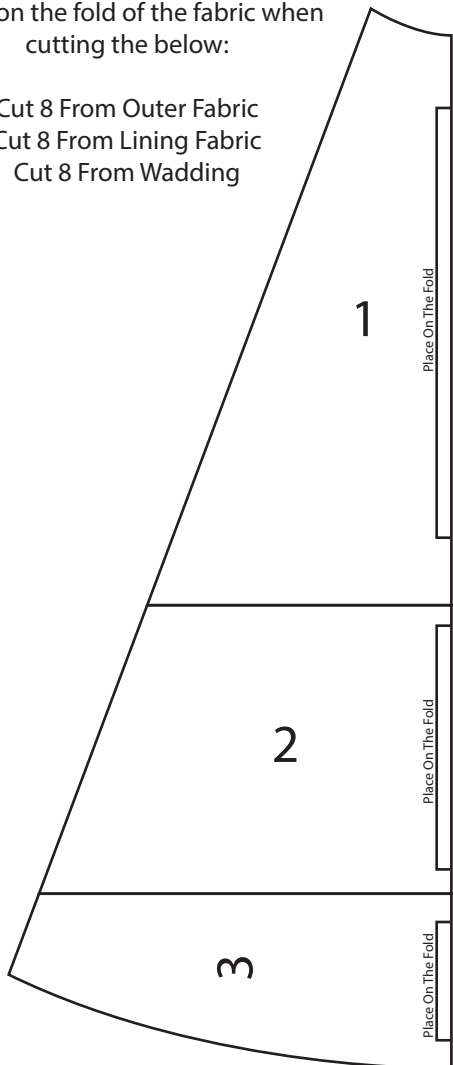


# Tree Skirt

Join all three pieces together and place on the fold of the fabric when cutting the below:

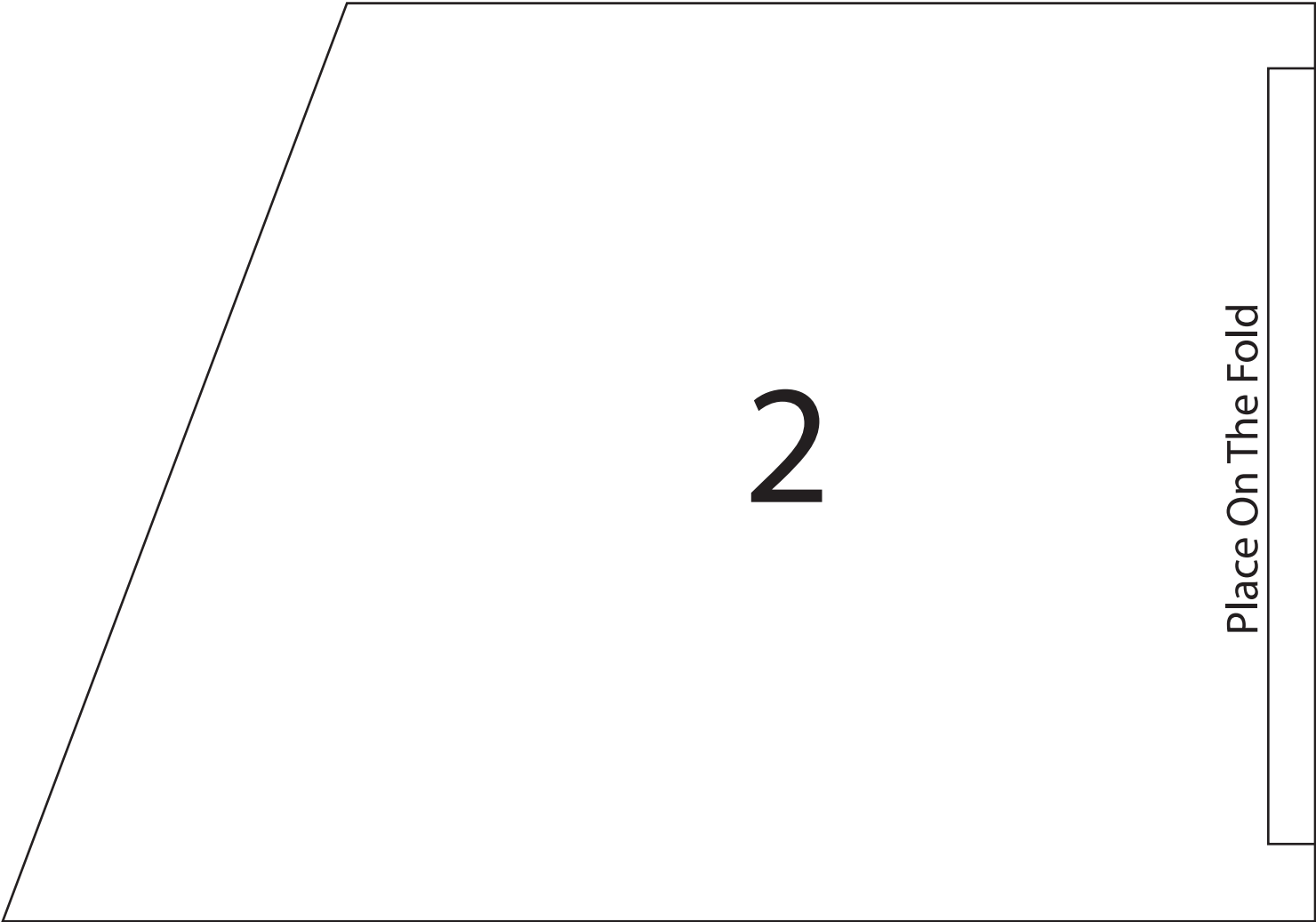
- Cut 8 From Outer Fabric
- Cut 8 From Lining Fabric
- Cut 8 From Wadding



- Cut 8 From Outer Fabric
- Cut 8 From Lining Fabric
- Cut 8 From Wadding

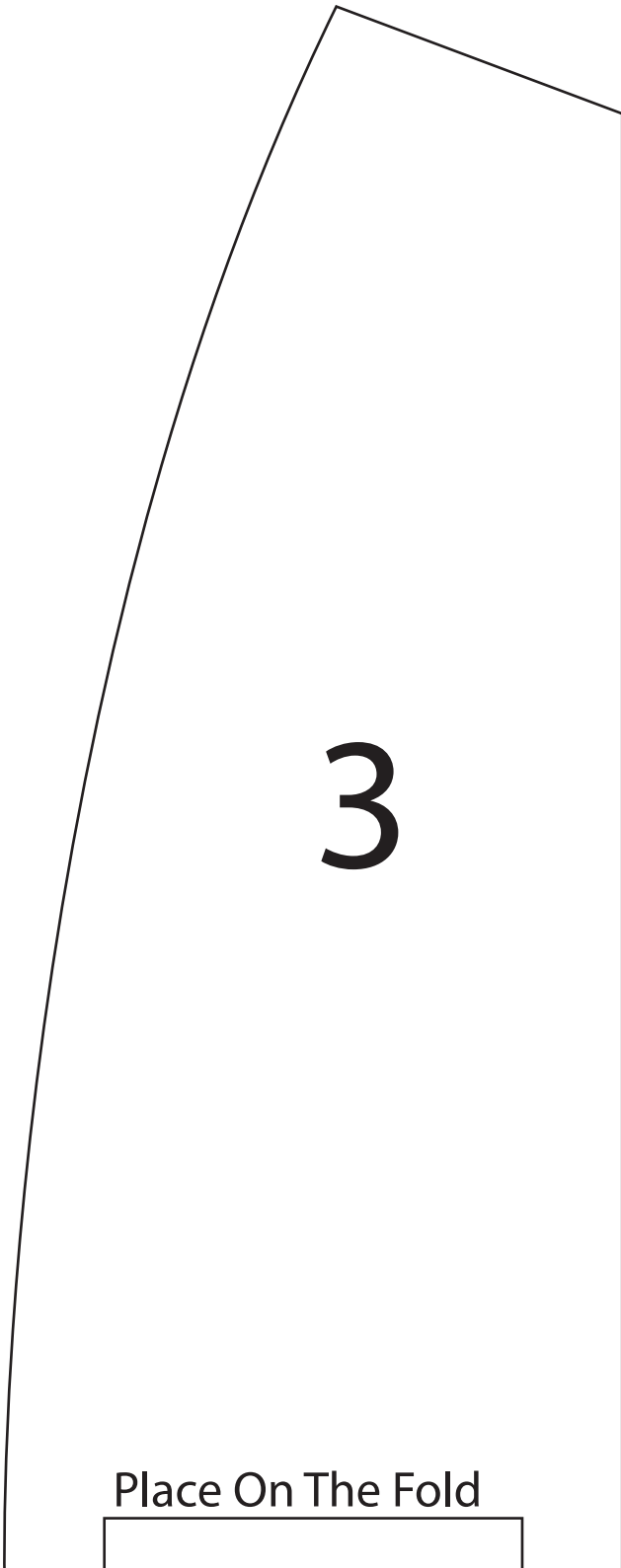
Square should Measure 1" when printed

# Tree Skirt



Square should  
Measure 1"  
when printed

# Tree Skirt



Square should  
Measure 1"  
when printed