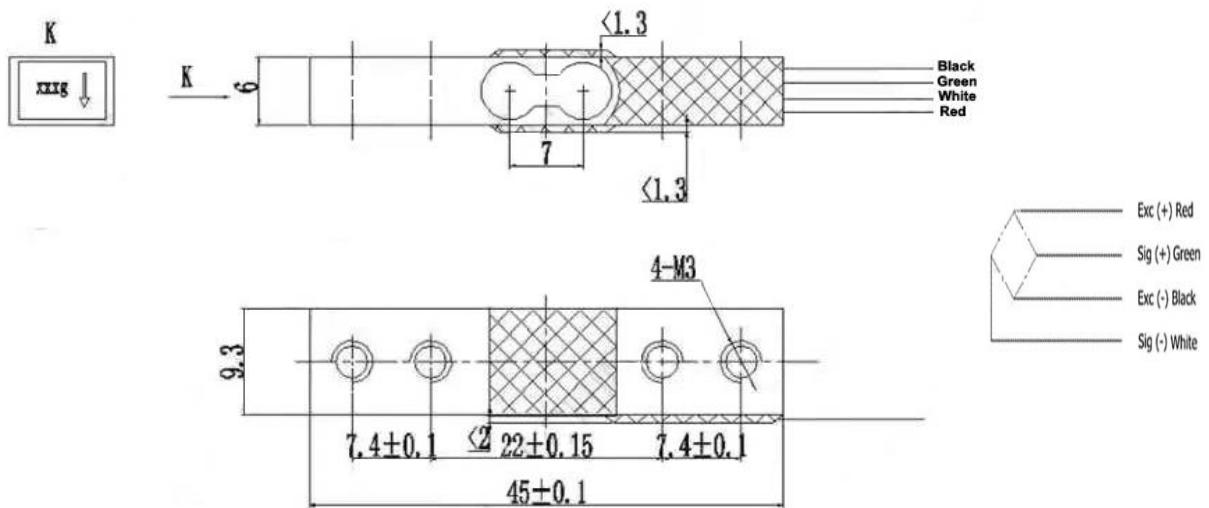


### Features:

- ◆ Capacity : 300~3000g
- ◆ Material: aluminum-alloy
- ◆ Type: Parallel beam type
- ◆ Defend grade: IP65
- ◆ Application : Palm scale, electronic jewelry scales and other electronic weighing devices.

Electrical connection and Dimensions:(dimension unit: mm)



## Technical Specification

Capacity:	300g	500g	1kg-3kg
Output Sensitivity:	0.7 ± 0.15m V/V	0.8 ± 0.15m V/V	1.0 ± 0.15m V/V
Material:	Aluminum alloy	Input resistance:	1050 ± 100Ω
Non-linearity:	± 0.05%FS	Output resistance:	1000 ± 10Ω
Hysteresis:	± 0.05%FS	Insulation resistance:	≥ 2000MΩ @ 50 Vdc
Repeatability:	± 0.05%FS	Excitation voltage:	3-10Vdc
Creep(30min):	± 0.1%FS	Operating Temp. range:	-20 ~ +60°C
Zero unbalance:	± 0.1%FS	Safe overload:	120%FS
Temp Effect on Output:	± 0.05%FS/10°C	Ultimate overload:	150%FS
Temp Effect on Zero:	± 0.20%FS/10°C	Cable :	Φ0.8, 110mm
Electrical connection:	excitation(+):Red excitation(-):Black signal(+):Green signal(-):White		

※Ordering code: model-capacity- rated output-accuracy-defend grade- the length of cable