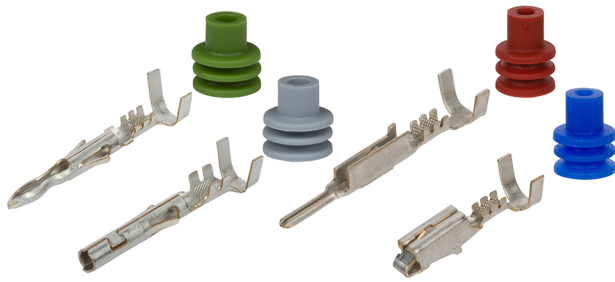


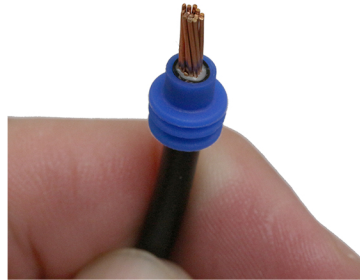
HOW TO CRIMP DELPHI TERMINALS AND SEALS WITH A T-18 CRIMP TOOL



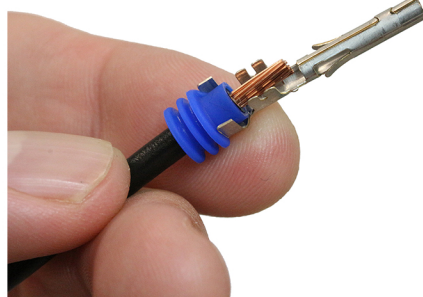
- 1 Slide the cable seal onto the un-stripped wire. Make sure the seal's ribs are aimed away from the termination.



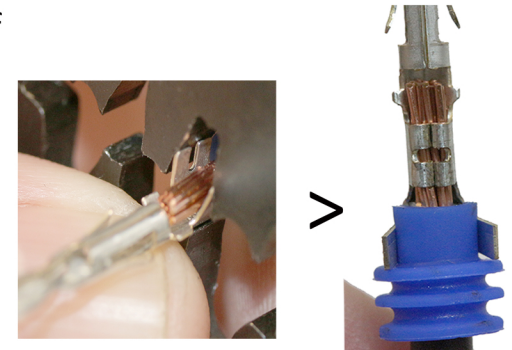
- 2 Strip 1/4" of wire. Slide the cable seal up to the end of the wire's insulation.



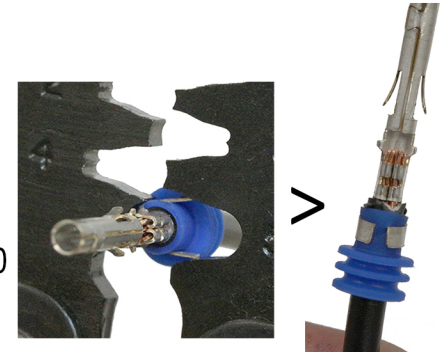
- 3 Insert the stripped wire into the terminal's inner straps. Make sure the smaller end of the cable seal rests inside of the larger straps.



- 4 Place the inner straps inside of the appropriate cavity and squeeze tightly to crimp the wire strands.
#2 - 24-22 AWG
#3 - 20-18 AWG
#4 - 16-12 AWG



- 5 Place the cable seal inside the appropriate cavity and squeeze tightly to crimp the cable seal onto the wire's insulation.
#1 - Metri-Pack 150
#5 - Weather Pack & Metri-Pack 280



- 6 Gently pull on the terminal to ensure the crimps are secure.

