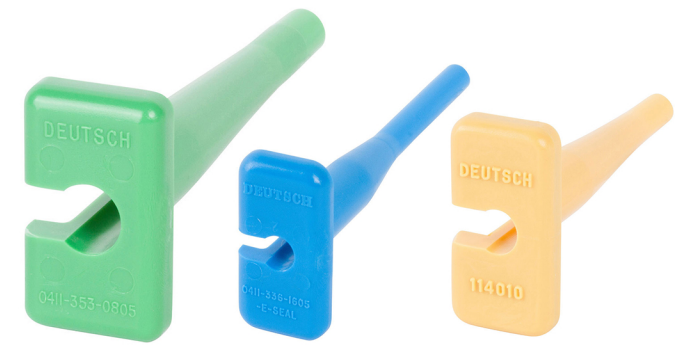
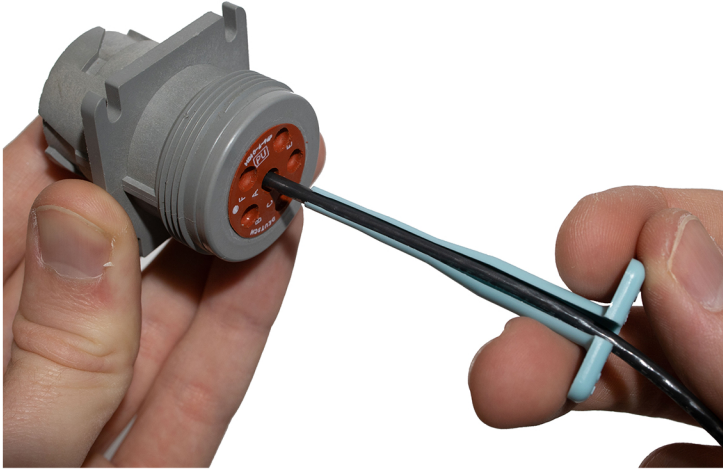


CUSTOMCONNECTORKITS

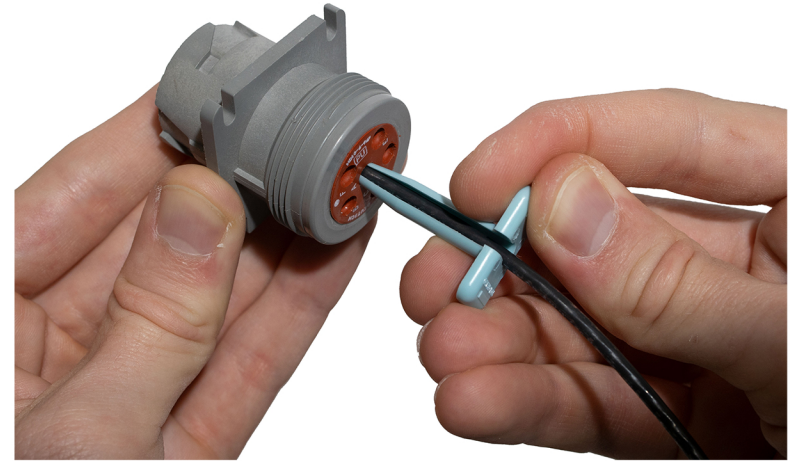
HOW TO REMOVE CONTACTS USING A DEUTSCH REMOVAL TOOL



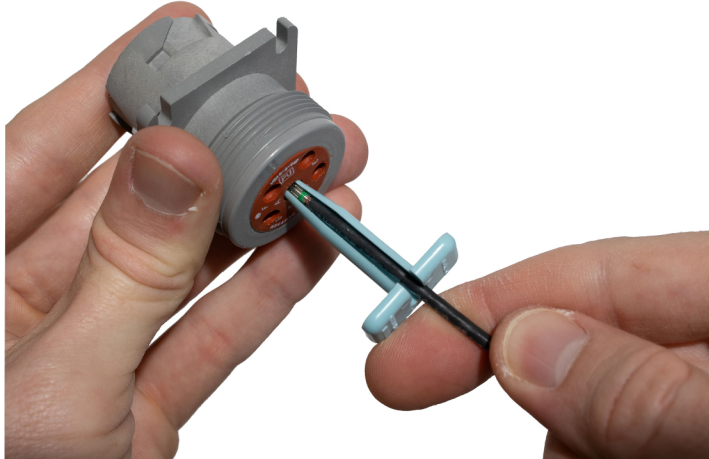
1 Settle the wire into the removal tool's barrel.



2 Slide the tool into the rubber seal until it stops.



3 While holding the tool in place, gently pull the wire out the back.



4 Once the terminal is fully removed, pull the tool out of the seal.

