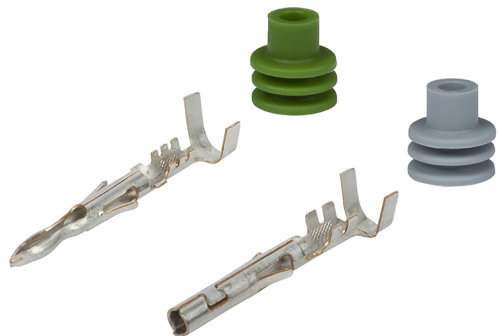
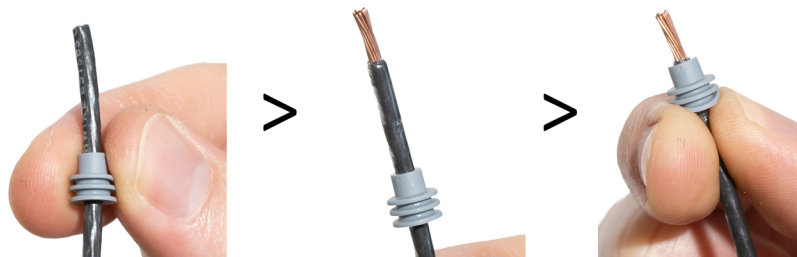


# CUSTOMCONNECTORKITS

## HOW TO CRIMP WEATHER PACK TERMINALS AND SEALS WITH A 12014254 CRIMP TOOL



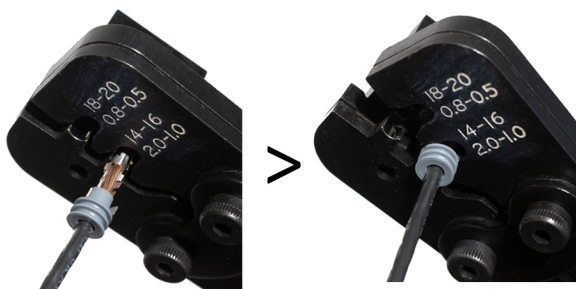
- 1 Slide the seal onto the wire, ribs aimed away from the end. Strip 1/4" of wire and slide the seal to the end of the insulation.



- 2 Seat the stripped wire inside the terminal's inner straps. Make sure the small end of the seal is seated inside the outer straps. It can be helpful to lightly pinch the outer straps onto the seal.



- 3 Insert the terminal and seal into the matching cavity until it is fully seated within the mounting block.



- 4 Squeeze the handles to clamp the jaws shut. The jaws will not release until the crimping cycle is complete.



- 5 Once the jaws release, remove the crimped terminal and seal from the jaws.



- 6 Gently pull on the terminal to ensure the crimps are secure.

