



JCB 520-50

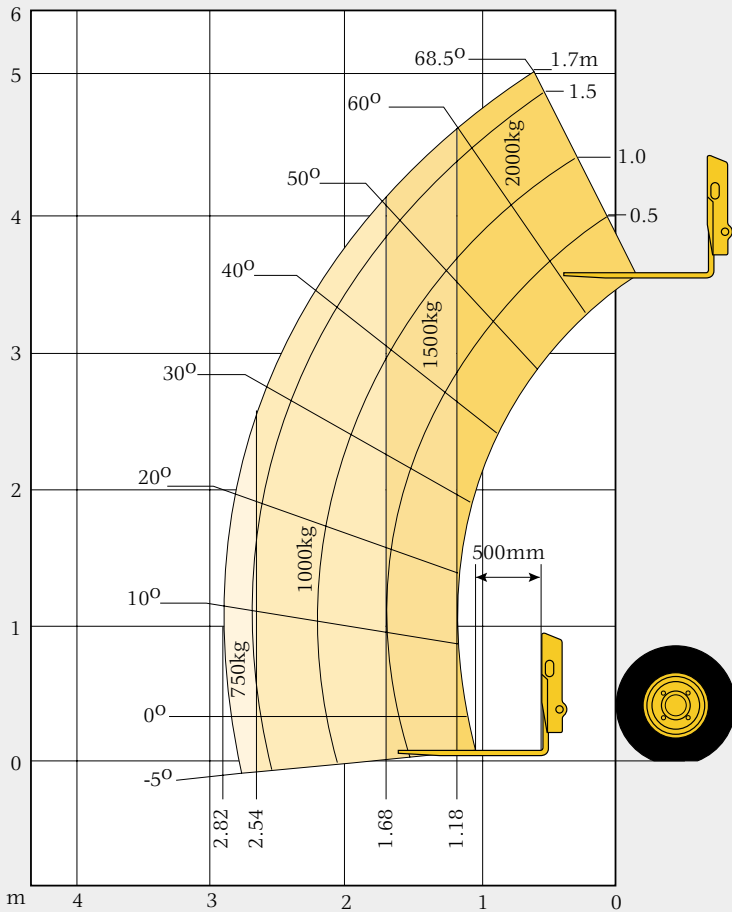
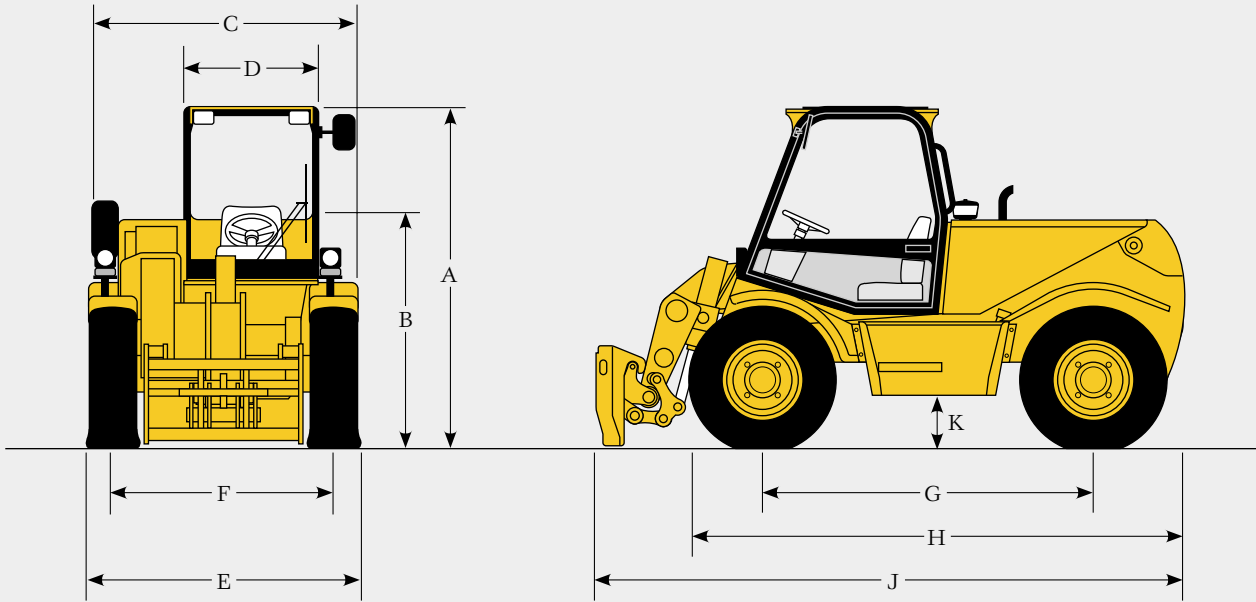
LOADALL



2 TONNES TO 5 METRES LIFT HEIGHT.

GENERAL SPECIFICATION

DIMENSIONS



STATIC DIMENSIONS

A Overall height	2.12m	6' 11"
B Height to top of steering wheel	1.56m	5' 1"
C Overall width	1.80m	5' 11"
D Inside width of cab	0.80m	2' 7"
E Width over tyres	1.84m	6' 0"
F Front track	1.53m	5' 0"
G Wheelbase	2.00m	6' 7"
H Overall length to front tyres	3.08m	10' 1"
J Overall length to front carriage	3.59m	11' 9"
K Ground clearance	0.30m	1' 0"
Outer turn radius over tyres	3.00m	9' 9"
Obstruction/departure angle with/without quickhitch	30°/58°	
Weight	4870kg	10736lb
Power to weight ratio 53kW (71hp) Engine	10.9kW/tonne	
Tyres	10.5 x 18 10pr	

LIFT PERFORMANCE

Lift capacity to full height	2000kg	4408lb
Lift capacity at full reach	750kg	1536lb
Lift height	5.09m	16' 8"
Reach at max lift height	0.60m	2' 0"
Maximum forward reach	2.82m	9' 3"
Reach with 1 tonne load	2.68m	8' 9"
Placing height	4.60m	15' 1"

Complies with FEM stability test 4.001r

JCB 520-50 LOADALL

ENGINE

4 cylinders. Bore 100mm (3.94in); stroke 127mm (5in); displacement 3.99ltr (244in³). Latest technology and advanced design provides low fuel consumption, reduced noise, high torque and power output, total reliability and minimal maintenance. Easily replaceable pre-finished dry liners, five bearing, heat treated crankshaft. Expansion controlled pistons. Two-stage, dry type air filter with primary and safety elements, and pre cleaner.

Engine	Naturally aspirated
Power at	2000rpm
Gross SAE J1349	57.5kW (77hp)
Net SAE J1349	52.0kW (70hp)
EEC 80/1269	55.0kW (74hp)
Torque at	1400rpm
SAE J1349	290 Nm (214lbf/ft)
EEC 80/1269	276 Nm (203lbf/ft)

TRANSMISSION

JCB Syncro Shuttle transmission incorporating torque converter, reversing shuttle and all synchromesh 4-speed gearbox in one resiliently mounted unit. Electro-hydraulic direction control through a steering column mounted switch for modulated forward/reverse shuttling. Gear lever and loader control transmission disconnect switches for fast gearchanging. Travel speed 32km/h (20mph).

Front and rear drive axles
Epicyclic hub reduction type with drop box on front axle. 4WS and permanent 4WD.

BRAKES

Service brakes: Hydraulically activated, power assisted multi disc type brakes. They are oil immersed for long life and fade free braking. Mounted within the planetary hub means that the brakes are direct acting to each wheel, greatly increasing deceleration and eliminating skid potential.

Parking brake is an electro/hydraulically operated oil immersed multi disc brake on the transmission output shaft and will hold the machine on 1 in 4 gradients.

BOOM AND CARRIAGE

Boom is manufactured from high tensile steel. Low maintenance, hard wearing pads. JCB tool carrier parallel lift carriage with pin locking accepts fork frame with integral pallet forks and a wide range of attachments.

SERVICE CAPACITIES

Fuel tank	90 ltr (19.5 gal)
Hydraulic tank	70 ltr (15.5 gal)
Coolant	20 ltr (4.4 gal)

HYDRAULICS

Single gear pump, with suction strainer and filter. Operating system pressure: 241 bar (3500 psi). Flow at system pressure: (at 2200rpm) 65 ltr/min One boom end auxiliary hydraulic service fitted as standard.

Cycle times (secs)	
Boom raise	7.4
Boom lower	5.3
Extend	5.7
Retract	3.2
Bucket dump	2.3
Bucket crowd	3.2

SAFETY CHECK VALVES

Fitted to carriage tilt, telescopic and boom lift rams.

ELECTRICS

12v negative earth. 92 AH heavy duty battery with isolator. 65 amp alternator. Full road lighting. Direction indicators. Hazard warning.

CAB

Quiet, safe and comfortable cab conforms to ROPS 86/295/EEC and FOPS 86/296/EEC Directives. Toughened glass all round. Tinted with laminated roof screen. Roof bars, front screen and roof screen wipers and heater/screen demister. Rear opening window with wash/wipe. Audio-visual warning system for coolant temperature, engine oil pressure, air-cleaner, battery charge, transmission oil temperature and pressure.

GENERAL SPECIFICATION

Hourmeter and tachometer. Multi lever direct acting hydraulic control levers with joystick control of lift and crowd, gear lever, parkbrake. Throttle and brake pedals. Adjustable deluxe suspension seat fitted with levelling indicator.

Safe load indicator:

Automatic eye level audio-visual safe load indicator warning system receiving a signal from a load sensor housed on the rear axle. This system continuously monitors the machine's forward stability and leaves the operator in control at all times.

STEERING

Full power hydrostatic steering. Permanent 4WS with 32° lock front and rear axles provides exceptional manoeuvrability. 4WS is provided by a steer priority flow from the main hydraulic pump. Flow is directed through a steer alignment valve to double acting steer rams (1 per axle).

OPTIONS AND ACCESSORIES

Options: Low cab, working lights, reversing light, reverse alarm, rotating flashing beacon, fire extinguisher, front screen guard, mechanical or hydraulic tow hitch for maximum gross weight of 5 tonnes. Complete with trailer light socket and trailer tip hydraulics, hydraulic pin locking for attachments, boom end auxiliary service. Low ground pressure bearing tyres.

Attachments: 520-50 is available with hydraulic quickhitch. Contact your local dealer for details of the comprehensive range.

LOADER PERFORMANCE

Standard GP bucket	
Bucket rated capacity	0.7m ³ (0.9yd ³)
Bucket struck capacity	0.61m ³ (0.8yd ³)
Breakout force	3200kgf (7054lbf)
Dump height (max)	4.69m (15' 5")
Dump angle at max height	35°
Loadover height (max)	5.09m (16' 8")
Rollback angle at ground	45°
Carriage rotation angle (total)	150°
Payload (max)	1260kg (2777lb)
Bucket width	1.72m (5' 9")



A GLOBAL COMMITMENT TO QUALITY.

JCB's total commitment to its products and customers has helped it grow from a one-man business into Britain's largest privately owned manufacturer of backhoe loaders, crawler excavators, wheeled excavators, telescopic handlers, wheeled loaders, rough terrain fork lifts, industrial fork lifts, mini excavators, skid steers and tractors.

By making constant and massive investments in the latest production technology, the JCB factories have become some of the most advanced in Europe.

By leading the field in innovative research and design, extensive testing and stringent quality control, JCB machines have become renowned all over the world for performance, value and reliability.

And with a global sales and service network of over 400 distributors and agents, the company exports over 70% of its production to all five continents.

Through setting the standards by which others are judged, JCB has become one of Britain's most impressive success stories.



JCB care for the environment.
This paper has been produced without
the use of elemental chlorine chemicals
in the bleaching process.

JCB Sales Limited, Rocester, Staffordshire ST14 5JP.
Tel: 01889 590312. Fax: 01889 590588.
Web: <http://www.jcb.co.uk>

JCB reserves the right to change specifications without notice.
Illustrations shown may include optional equipment and accessories.

9999/4564 12/00

