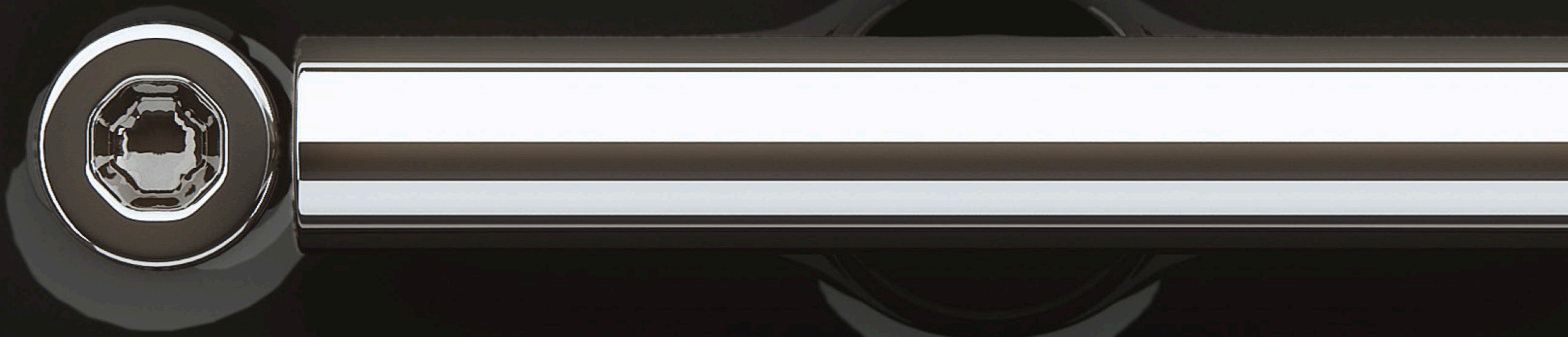


D O L O W
C O L L E C T I O N





La Colección Do, une el conocimiento ancestral sobre la porcelana de los artesanos de Fontini con la búsqueda de la esencia de Oriol Guimerà.



La collection DO unit la connaissance ancestrale des artisans de Fontini sur la porcelaine à la recherche de l'essence d'Oriol Guimerà.

**ORIOLO GUIMERÀ
DESIGN & FONTINI**



The DO Collection blends the Fontini artisans' ancestral knowledge of porcelain with search for the essence of Oriol Guimerà.

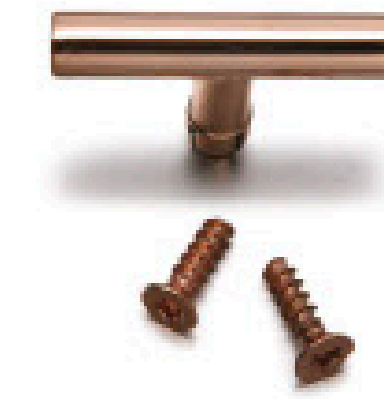
MANECILLA Y TORNILLO

MANETTES ET VIS

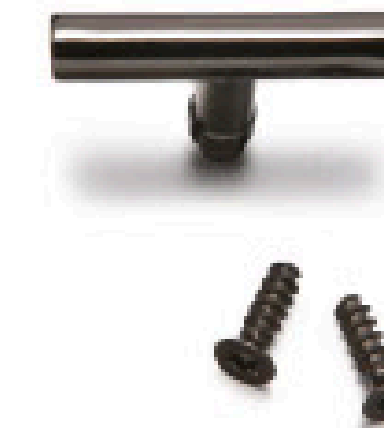
KNOBS AND SCREWS



METAL COBRE BRILLO
MÉTAL CUIVRE BRILLAN
POLISHED COPPER-COLOUR METAL



METAL NÍQUEL NEGRO
MÉTAL NICKEL NOIRE
BLACK NICKEL METAL



METAL CROMO
MÉTAL CHROM
CHROME-COLOUR METAL



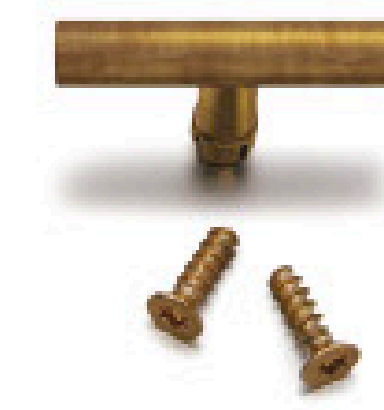
NEW

METAL LATÓN
MÉTAL LAITON
BRASS-COLOURED METAL



NEW

METAL LATÓN ENVEJECIDO
MÉTAL LAITON VIEILLI
AGED BRASS-COLOURED METAL



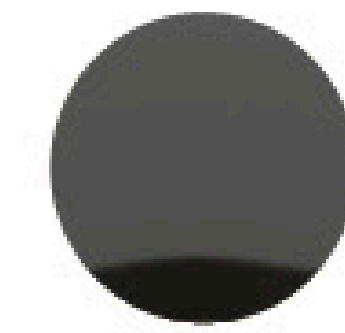
DISPOSITIVOS

PORCELANA NEGRA
PORCELAINE NOIRE
BLACK PORCELAIN

PORCELANA BLANCA
PORCELAINE BLANCHE
WHITE PORCELAIN



MÉCANISMES



MECHANISMS

MARCO

HAYA NATURAL
HÊTRE NATUREL
NATURAL BEECH

NOGAL
NOYER
WALNUT

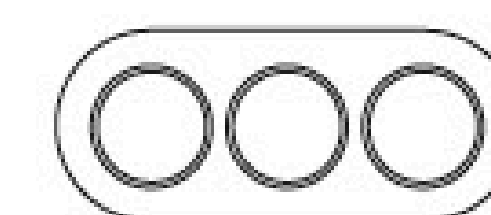
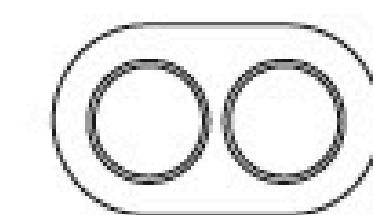
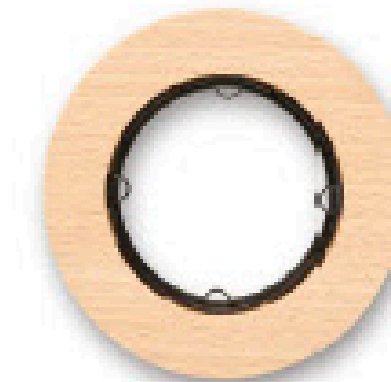
HAYA OSCURECIDA
HÊTRE OBSCURCI
DARKENED BEECH

PORCELANA NEGRA
PORCELAINE NOIRE
BLACK PORCELAIN

PORCELANA BLANCA
PORCELAINE BLANCHE
WHITE PORCELAIN

FRAME

CADRE



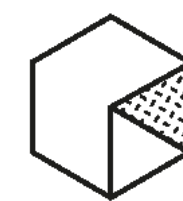
D O L O W
C O L L E C T I O N

02/2022 - 0400D011

Fontini



reddot design award



archiproducts'
DESIGN AWARDS

W W W . F O N T I N I . C O M