



EASY ASSEMBLY AND OPERATION INSTRUCTIONS

23SV23825 Towering Santa

READ AND SAVE THESE INSTRUCTIONS FOR FUTURE REFERENCE

IF ANY PART IS MISSING OR BROKEN, DO NOT ATTEMPT TO ASSEMBLE THE PRODUCT AND CONTACT SVI CUSTOMER SERVICE FROM 8:30 AM TO 5:30 PM PST AT 1-855-428-3921, EMAIL CUSTOMERSERVICE@SVIUS.COM, OR CALL HOME ACCENTS HOLIDAY CUSTOMER SERVICE FROM MON-FRI 8:00 AM TO 7:00 PM AND SAT 9:00 AM TO 6:00 PM EST AT 1-855-HDHOLIDAY (1-855-434-6543).

IMPORTANT TIPS:

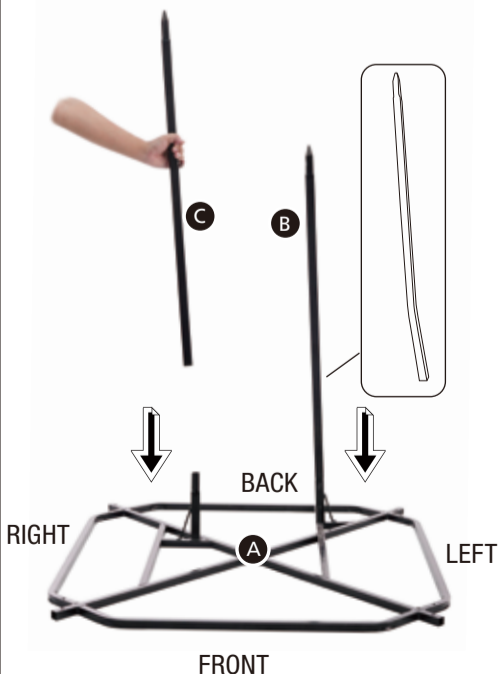
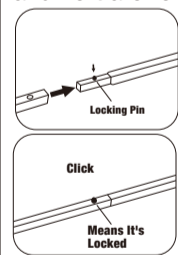
- Ensure that the (M) Lantern is toggled to the desired setting.
- If not functioning properly (LEDs don't light up), ensure that the (M) Lantern has fresh batteries (3 x 1.5V AA batteries).
- Ensure that the floor or surface that the item sits on is flat and level.
- If the item still does not work, contact SVI Customer Service from 8:30 am to 5:30 pm PST at 1-855-428-3921, email customerservice@svius.com, or call Home Accents Holiday Customer Service from Mon-Fri 8:00 am to 7:00 pm and Sat 9:00 am To 6:00 pm EST at 1-855-HDHOLIDAY (1-855-434-6543).

PARTS LIST

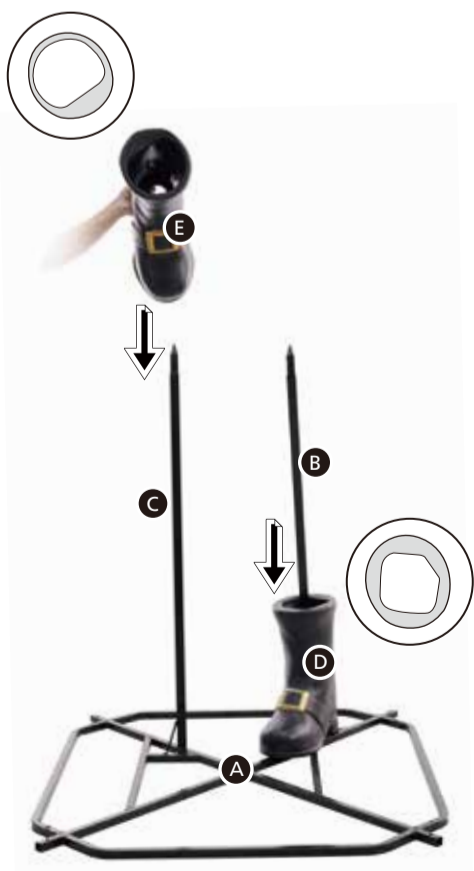
- A. Base x 1
- B. Left Pole x 1
- C. Right Pole x 1
- D. Left Boot x 1
- E. Right Boot x 1
- F. Left Leg x 1
- G. Right Leg x 1
- H. Body x 1
- I. Left Arm x 1
- J. Right Arm x 1
- K. Left Forearm x 1
- L. Right Forearm x 1
- M. Lantern x 1
- N. Head x 1
- O. Left Cap x 1
- P. Right Cap x 1
- Q. Base Extensions x 4
- R. Stakes x 4
- S. Small Parts Bag x 1



NOTE: Throughout the instructions, Right and Left are relative to the character.



1.1



1.2

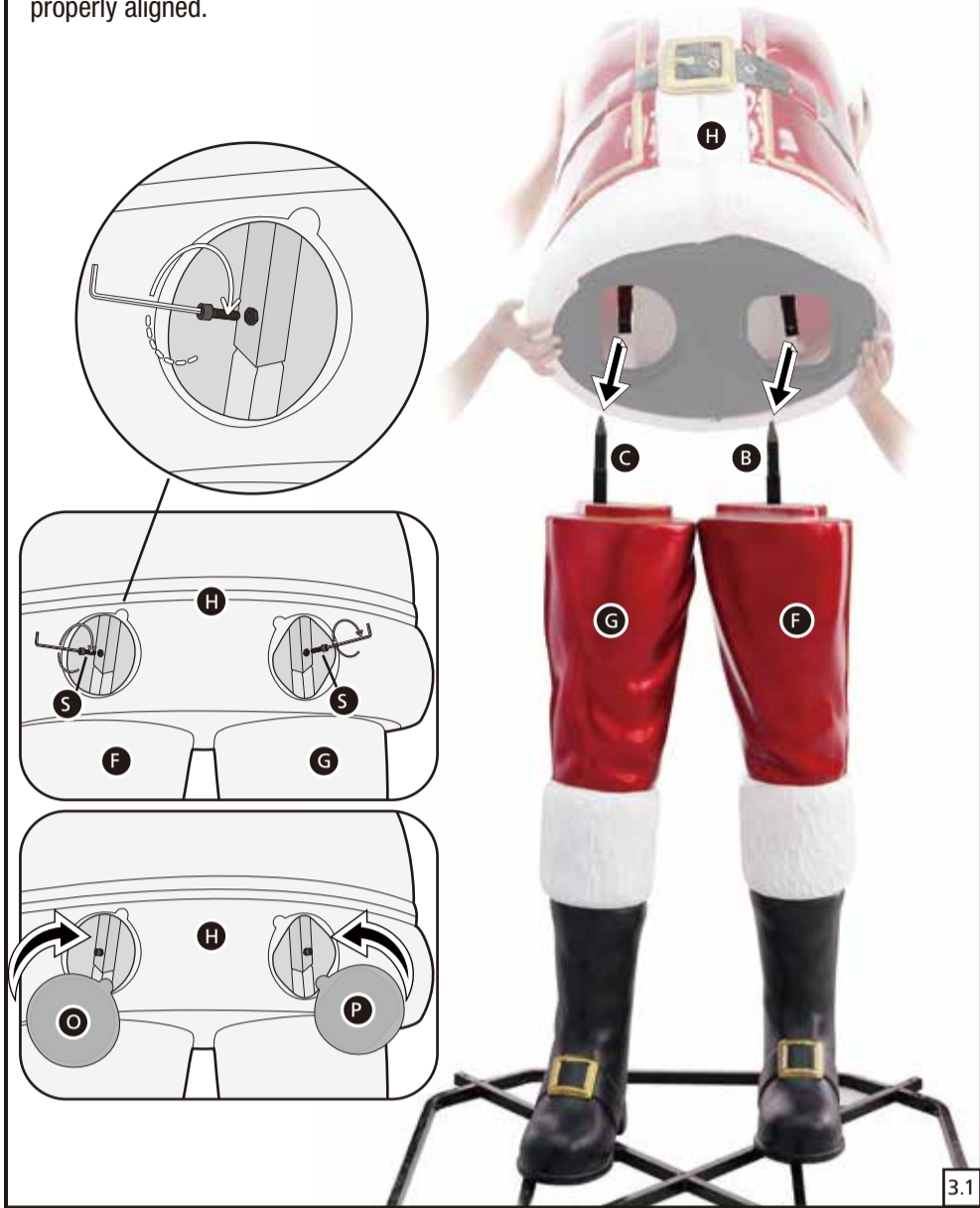


2.1

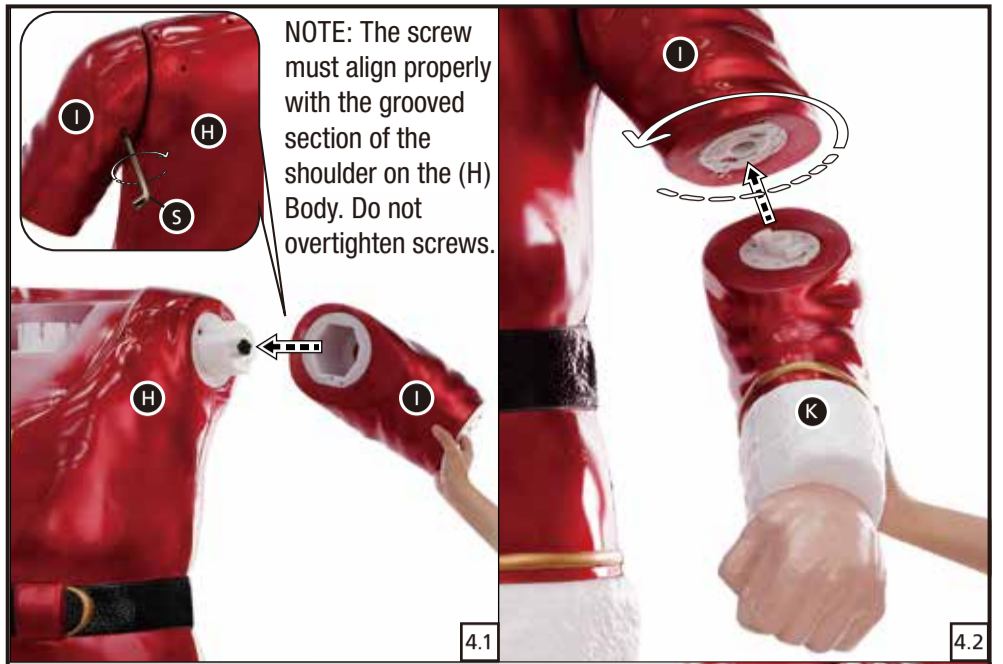


2.2

NOTE: If there is difficulty in assembling the (H) Body, try adjusting the (B,C) Poles until they are properly aligned.



3.1



NOTE: The screw must align properly with the grooved section of the shoulder on the (H) Body. Do not overtighten screws.

4.1



4.2

4.3



5.1



5.2

NOTE: A ladder is advised for assembling the (N) Head.

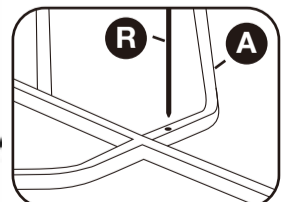
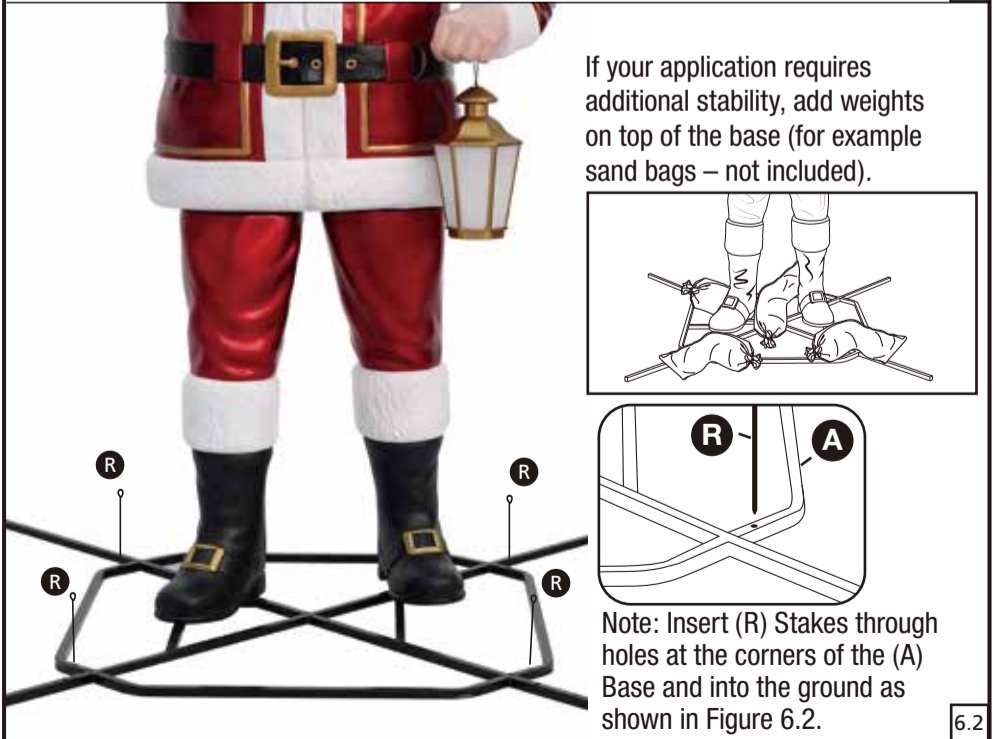
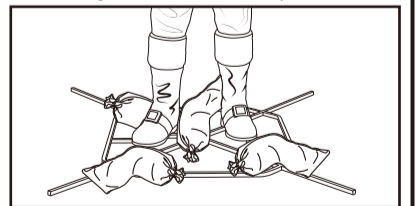


5.3



6.1

If your application requires additional stability, add weights on top of the base (for example sand bags – not included).



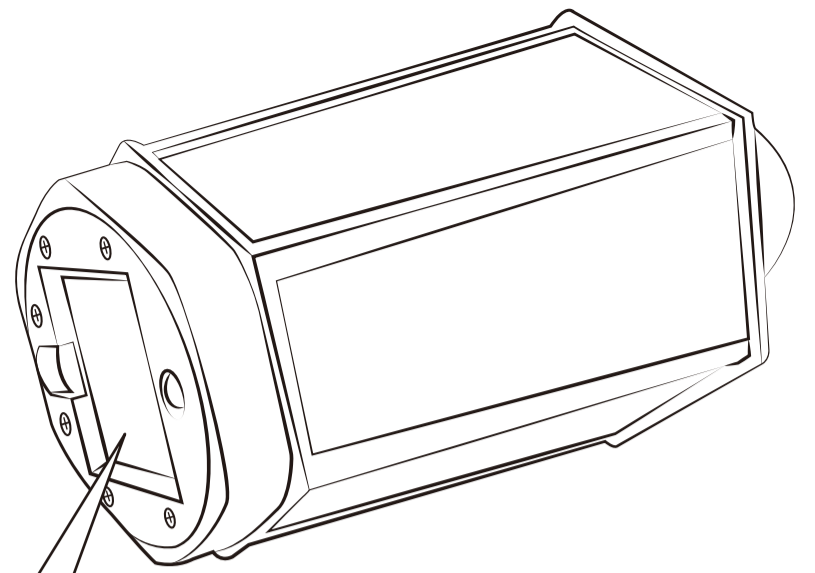
Note: Insert (R) Stakes through holes at the corners of the (A) Base and into the ground as shown in Figure 6.2.

6.2

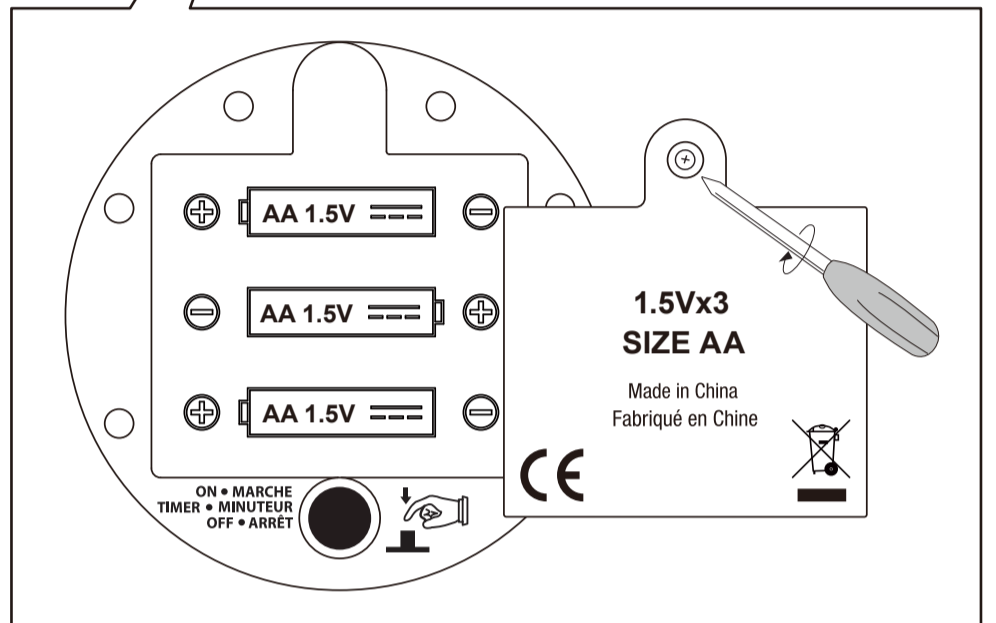
YOUR TOWERING SANTA IS NOW FULLY ASSEMBLED. TURN ON TO LET THE FUN BEGIN!



7.1



REMOVE LANTERN TO REPLACE BATTERIES



OPERATION INSTRUCTIONS:

The Towering Santa Lantern is powered by batteries. Insert 3 x 1.5V AA batteries into the battery box. To turn on the Towering Santa Lantern, press the button underneath the (M) Lantern once. Press the button again to switch to the Timer setting. Press the same button a third time to turn the item Off. The item is activated by pressing the button on the (M) Lantern and has the following settings:

- ON / MARCHÉ This setting will activate the LED lights of the item.

- TIMER / MINUTEUR This setting will activate the LED lights of the item for 6 hours at a time. The item will then turn off and turn on once again after 18 hours.

- OFF / ARRÊT This setting will deactivate the LED lights of the item.

BATTERY REPLACEMENT INSTRUCTIONS

Requires 3 x 1.5 AA batteries (Not Included)
 * You will need a small Phillips head screwdriver (Not Included).
 Locate the battery compartment on the product. Remove the battery compartment cover by using a small Phillips head screwdriver to unscrew the screw. After removing or installing the batteries, place the battery compartment cover into position, and secure the battery cover.

BATTERY WARNING:

Do not mix alkaline, standard (carbon-zinc), or rechargeable (nickel cadmium) batteries. Do not mix old and new batteries. Rechargeable batteries to be removed from the product before being charged. Only batteries of the same or equivalent type as recommended are to be used. Rechargeable batteries are only to be charged under adult supervision. Non-rechargeable batteries are not to be recharged. Batteries are to be inserted with the correct polarity. Remove batteries if consumed or if product is to be left unused for a long time. The supply terminals are not to be short-circuited. Dispose of batteries safely. **DO NOT DISPOSE OF BATTERIES IN FIRE, BATTERIES MAY EXPLODE OR LEAK**

This device complies with Part 15 of the FCC Rules. Operation is subject to the following two conditions: (1) This device may not cause harmful interference, and (2) this device must accept any interference received, including interference that may cause undesired operation.

CAUTION: Changes or modifications not expressly approved by the party responsible for compliance could void the user's authority to operate the equipment.

NOTE: This equipment has been tested and found to comply with the limits for a Class B digital device, pursuant to Part 15 of the FCC Rules. These limits are designed to provide reasonable protection against harmful interference in a residential installation. This equipment generates, uses, and can radiate radio frequency energy and, if not installed and used in accordance with the instructions, may cause harmful interference to radio communications. However, there is no guarantee that interference will not occur in a particular installation. If this equipment does cause harmful interference to radio or television reception, which can be determined by turning the equipment off and on, the user is encouraged to try to correct the interference by one or more of the following measures: Reorient or relocate the receiving antenna, Increase the separation between the equipment and receiver. Connect the equipment into an outlet on a circuit different from that to which the receiver is connected. Consult the dealer or experienced radio/TV technician for help.

CAN ICES-003(B)/NMB-003(B)

WARNING:

This item is not a toy and should be used for decoration only. This item contains small parts that can be a choking hazard. Keep all plastic parts away from children.

- Lay product down before a storm or strong winds.
- Don't climb or pull on product.
- Don't add to or modify product.
- Assemble and place the product on level surfaces only.
- Don't push or tilt product.
- Please assemble item according to instructions.
- Children should be supervised by adults. Item should not be grabbed, as it becomes a tipping hazard.
- Please view all instructions carefully before assembling. Save this instruction sheet for future reference.

CARE AND STORAGE INSTRUCTIONS

When not in use, store this product in its original packing. Keep away from heat and moisture.

1 TWO ADULTS RECOMMENDED FOR ASSEMBLY	2 LEVEL AREA ONLY	3 DO NOT MOVE AFTER FULLY ASSEMBLED	7 USE NEW BATTERIES	9 CONTACT US IF LIGHTS DO NOT WORK CONTACT US 1-855-HDHOLIDAY (1-855-434-6543)	10 CONTACT US 1-855-HDHOLIDAY (1-855-434-6543)
4 DO NOT PUSH OR TILT	5 DO NOT CLIMB OR PULL ON	6 DO NOT ADD TO OR MODIFY	8 USE WEIGHTS ON THE BASE		

© Seasonal Visions International
 Berkeley, CA 94710
 Tel: 1-855-428-3921
 All Rights Reserved
 MADE IN CHINA