

EASY ASSEMBLY AND OPERATION INSTRUCTIONS

23SV23789 Towering Ghost



READ AND SAVE THESE INSTRUCTIONS FOR FUTURE REFERENCE

ASSEMBLY REQUIRES AT LEAST 2 ADULTS, 3 ADULTS ARE RECOMMENDED. PLEASE FOLLOW THE STEP BY STEP GUIDE AND ENJOY YOUR TOWERING GHOST!

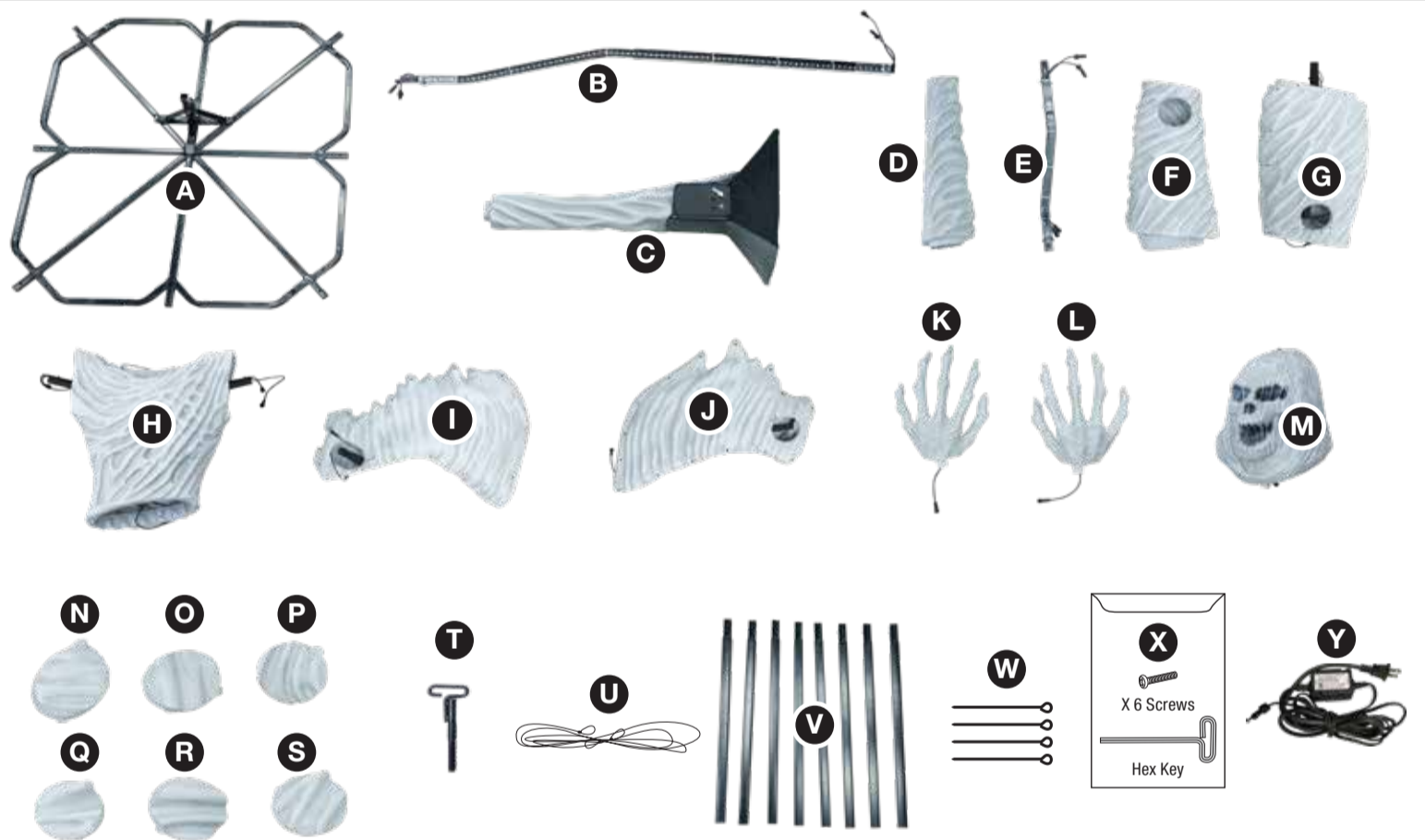
IF ANY PART IS MISSING OR BROKEN, DO NOT ATTEMPT TO ASSEMBLE THE PRODUCT AND CONTACT SVI CUSTOMER SERVICE FROM 8:30AM TO 5:30PM PST AT 1-855-428-3921, EMAIL CUSTOMERSERVICE@SVIUS.COM, OR CALL THE HOME DEPOT CUSTOMER SERVICE AT 1-855-434-6543 (1-855-HDHOLIDAY).

IMPORTANT TIPS:

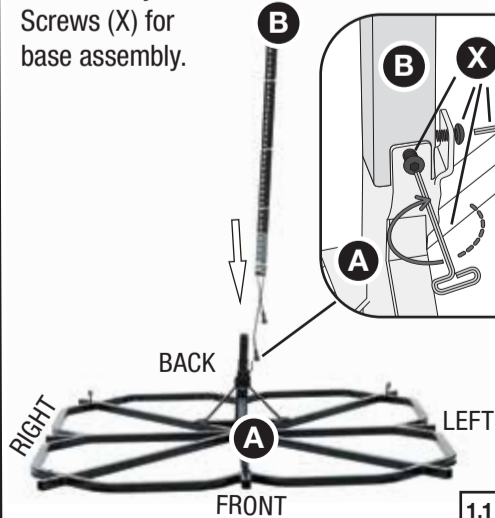
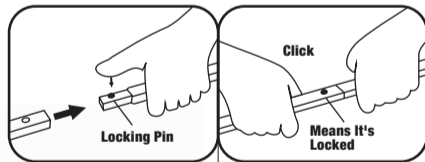
- Ensure that the item's adapter is plugged in at the Function Control Box and in the wall.
- Ensure that the red indicator light on the function control box is on the desired setting.
- If not functioning properly (ex: LEDs don't light up), ensure that cables are connected to their corresponding cable as shown in the instruction sheet.
- Ensure that the floor or surface that the item sits on is flat and level.
- If the item still does not work, contact SVI Customer Service from 8:30am to 5:30pm PST at 1-855-428-3921, email customerservice@svius.com, or call Home Accents Holiday Customer Service from Mon-Fri 8:00am to 7:00pm and Sat 9:00 am To 6:00 pm EST at 1-855-HDHOLIDAY (1-855-434-6543).

PARTS LIST

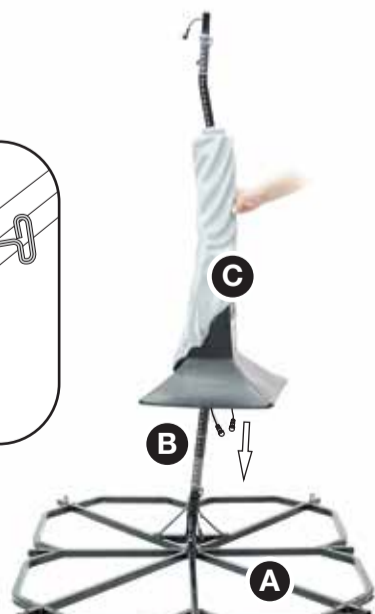
- A. Base x 1
 - B. Lower LED Pole x 1
 - C. Ghost Base x 1
 - D. Ghost Segment 1 x 1
 - E. Upper LED Pole x 1
 - F. Ghost Segment 2 x 1
 - G. Ghost Segment 3 x 1
 - H. Chest x 1
 - I. Left Arm x 1
 - J. Right Arm x 1
 - K. Left Hand x 1
 - L. Right Hand x 1
 - M. Head x 1
 - N. Left Arm Cap x 1
 - O. Right Arm Cap x 1
 - P. Upper Chest Cap x 1
 - Q. Lower Chest Cap x 1
 - R. Segment 3 Cap x 1
 - S. Segment 2 Cap x 1
 - T. Loop Screw x 1
 - U. Tether Cable x 1
 - V. Base Extensions x 8
 - W. Stakes x 4
 - X. Small Parts Bag x 1
 - Y. Adapter * x 1
- * Power Adapter Spec
Input: 120V ~ 50/60Hz
Output: 5.9V 2A



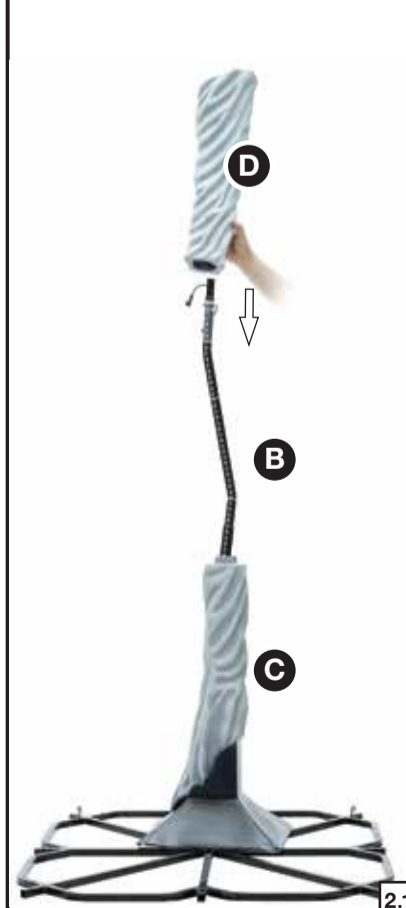
NOTE:
Throughout the instructions, Right and Left are relative to the character. The hooks on the (A) Base are towards the back of the item. Use Hex Key and Screws (X) for base assembly.



1.1

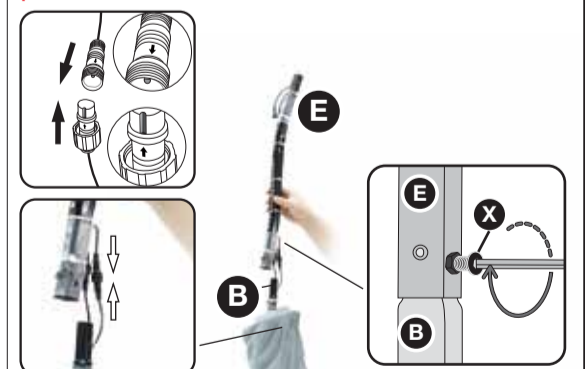


1.2



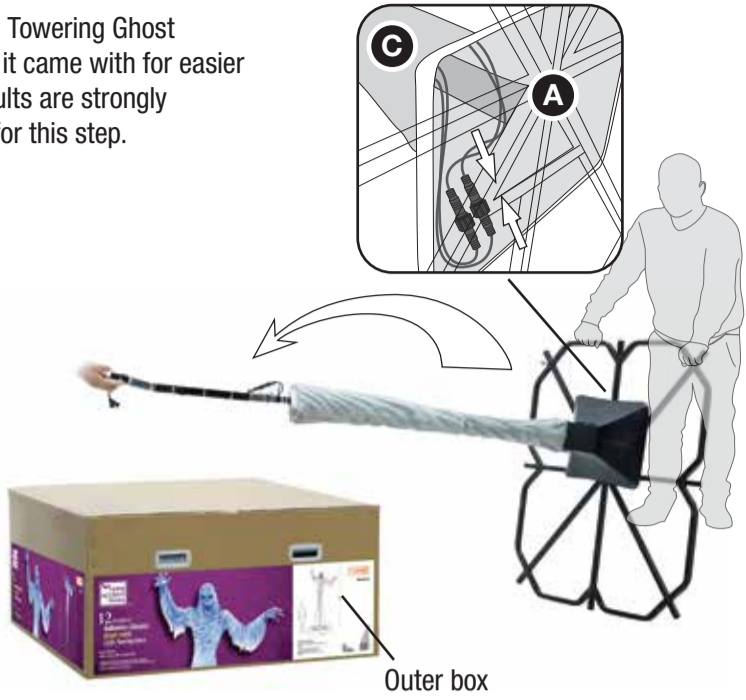
2.1

NOTE: When connecting cables, ensure that the arrow indicators on each cable end are lined up with and pointing at each other. There is also a groove and a rod like protrusion by these arrows that fit into each other. Then firmly press the cables together. Rotate the cable cap clockwise onto the threading of the corresponding cable until firmly in place.



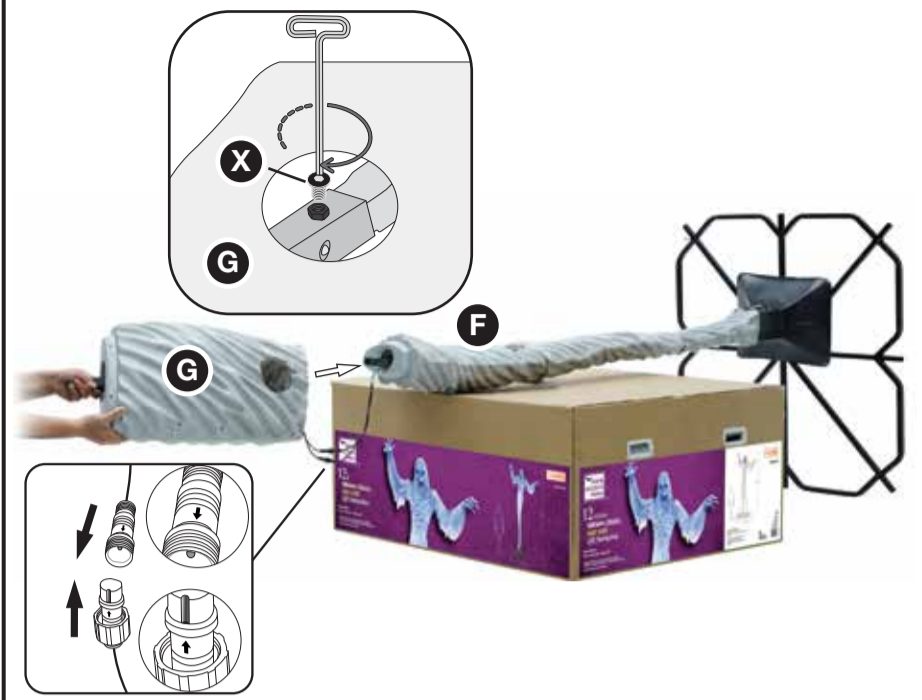
2.2

NOTE: Lean the Towering Ghost against the box it came with for easier assembly. 2 adults are strongly recommended for this step.



Outer box

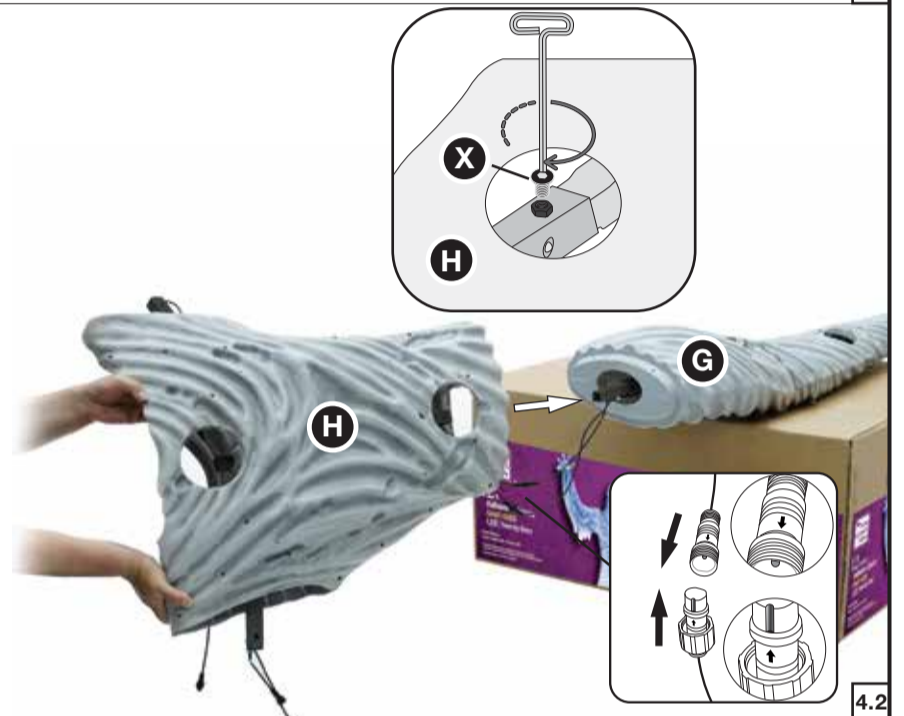
3.1



4.1



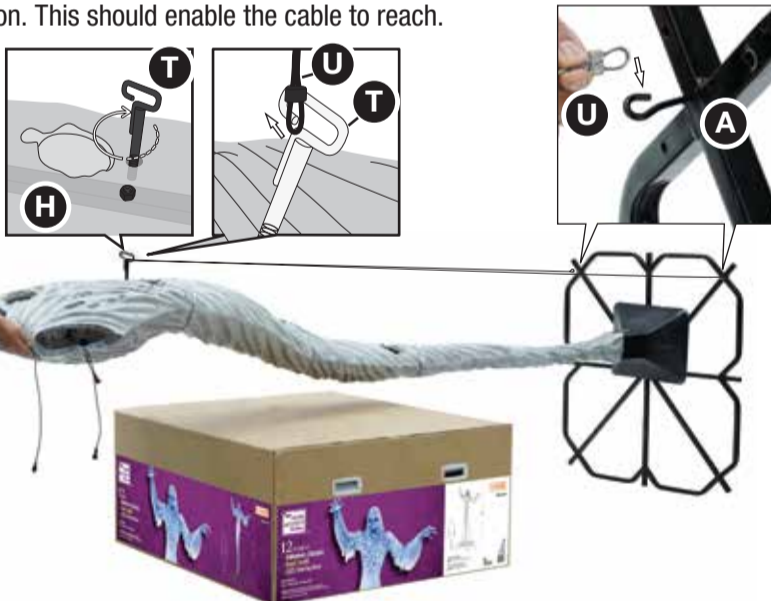
3.2



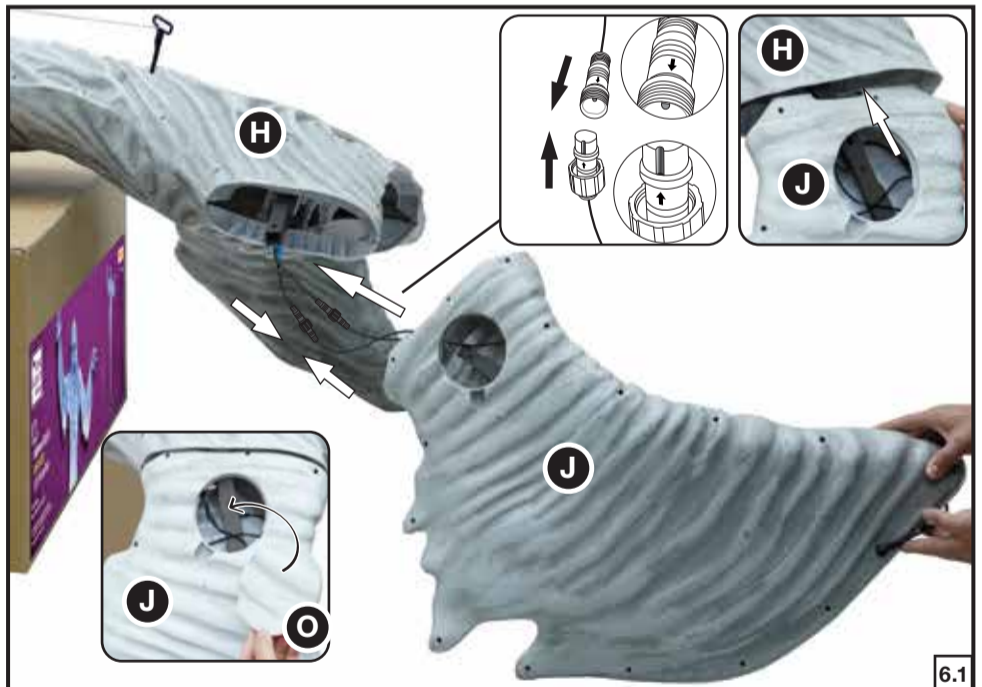
4.2

CAUTION: Cable may have sharp ends, use caution when assembling. If cable cannot reach, the (H) Chest of the Towering Ghost needs to be lifted while in its laying position. This should enable the cable to reach.

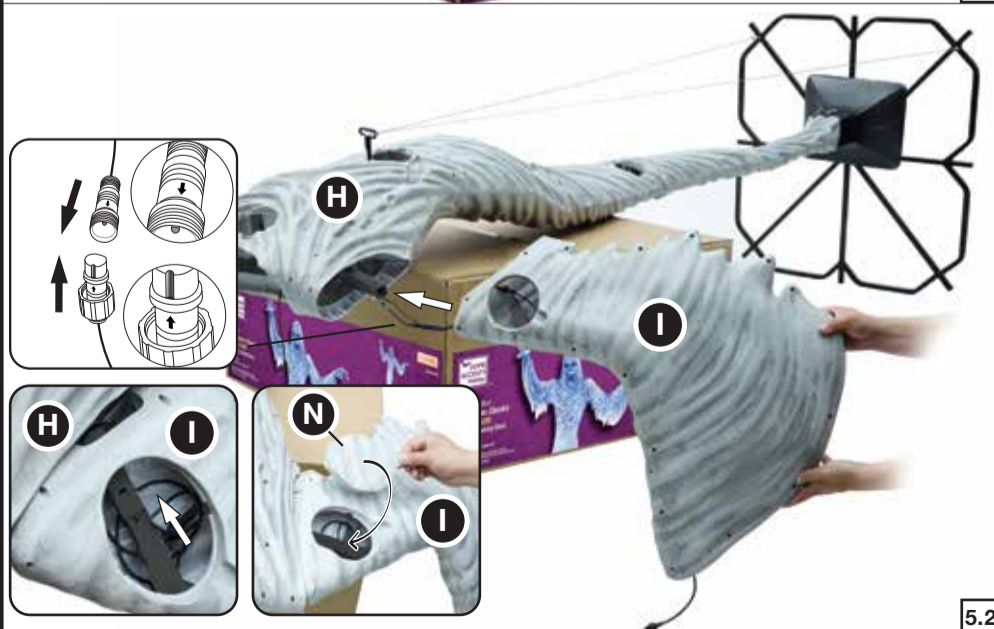
NOTE: Screw the (T) Loop Screw into the area inside of the (H) Chest as shown.



5.1

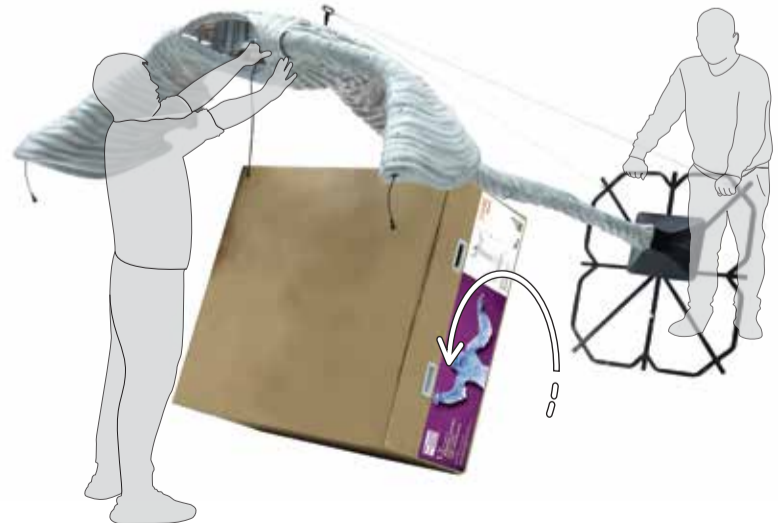


6.1

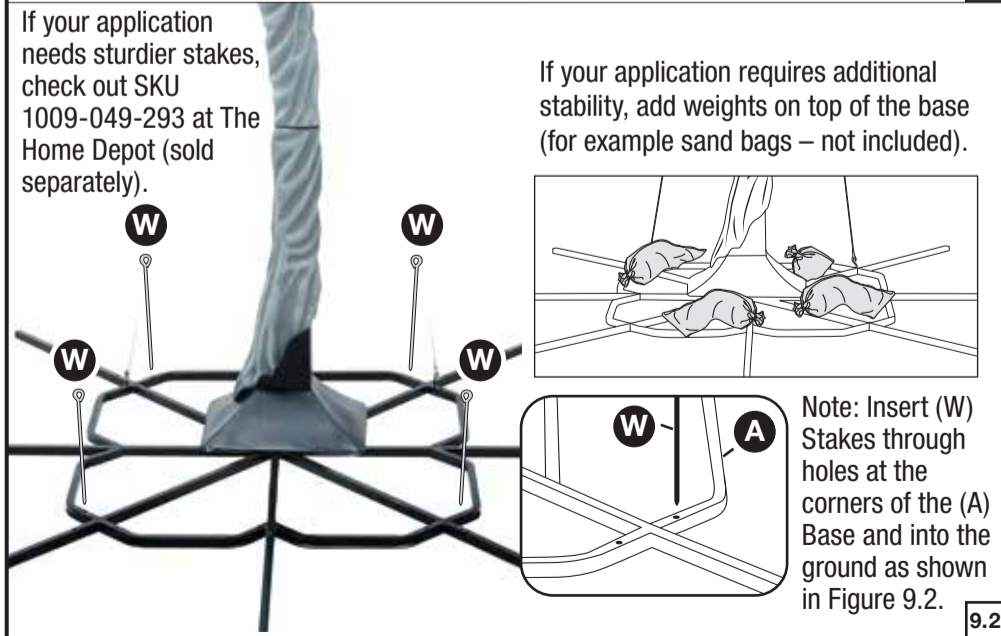
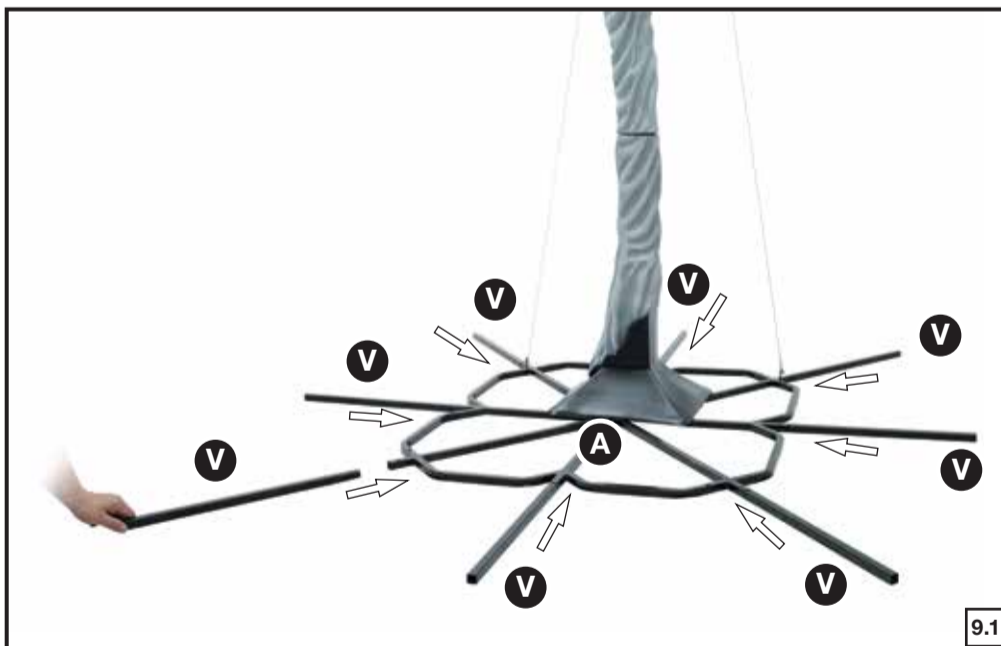
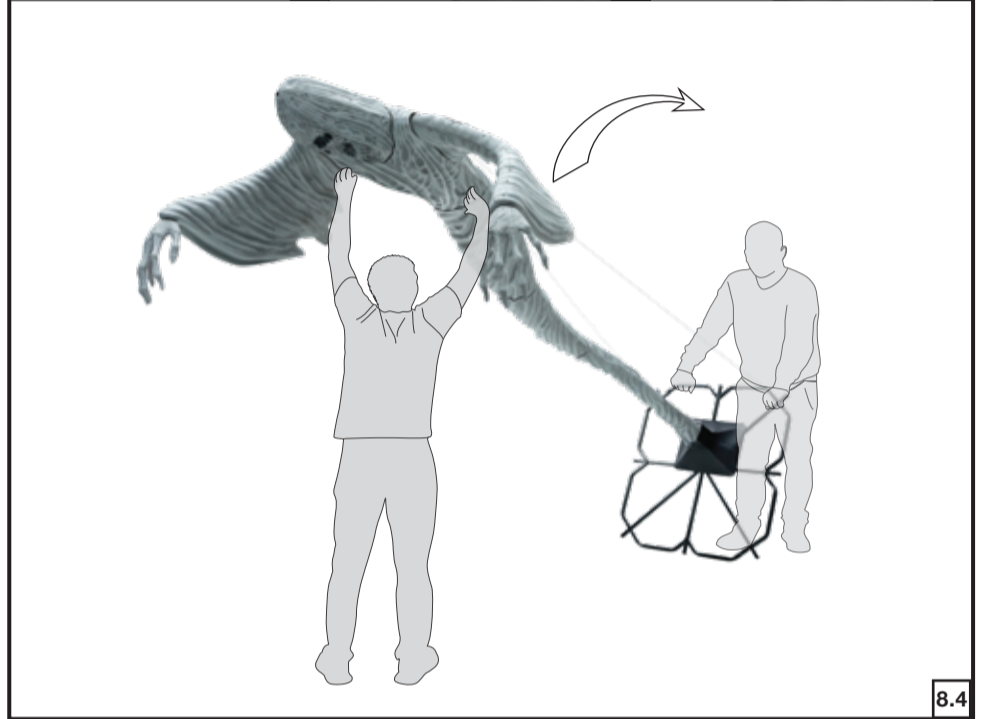
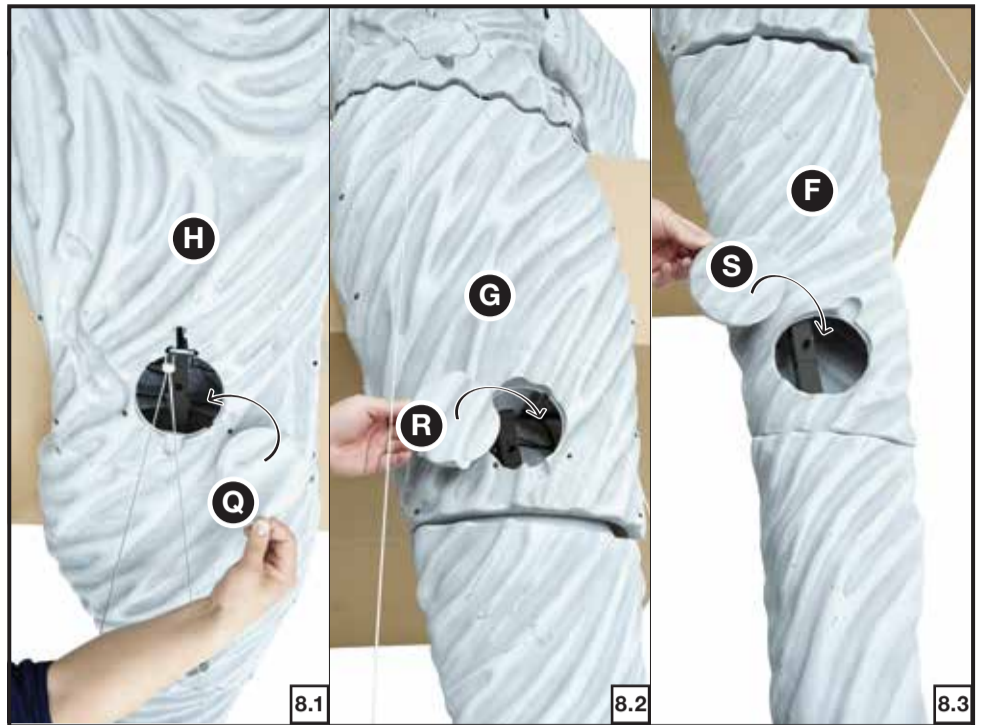
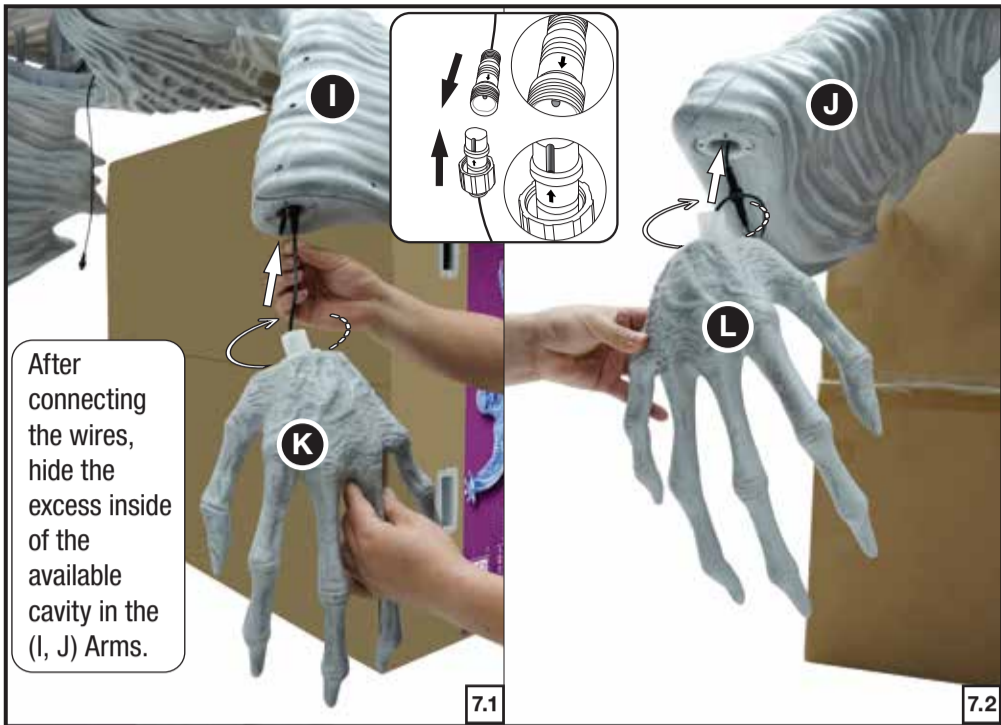


5.2

NOTE: Lift the Towering Ghost and rotate the box 90 degrees onto its side so the box appears taller. Set the Towering Ghost back down onto the box.



6.2



THE TOWERING GHOST IS NOW FULLY ASSEMBLED. PLUG IN AND TURN ON TO LET THE FUN BEGIN!



This device complies with Part 15 of the FCC Rules. Operation is subject to the following two conditions: (1) This device may not cause harmful interference, and (2) this device must accept any interference received, including interference that may cause undesired operation.

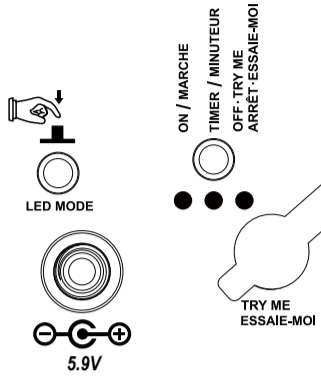
Cet appareil est conforme à la section 15 des règlements de la FCC. Le fonctionnement est sujet aux deux conditions suivantes : (1) Cet appareil ne doit pas émettre d'interférences dangereuses, et (2) cet appareil doit être en mesure d'accepter toutes les interférences reçues incluant celles qui peuvent provoquer un mauvais fonctionnement.

CANICES-003(B)/NMB-003(B)

© Seasonal Visions International Limited

All Rights Reserved Made in China

Tous droits réservés Fabriqué en Chine



NOTE: Make sure the waterproof cap is covering the Try Me receiver at all times when not in use.

OPERATION INSTRUCTIONS:

1. Plug the power adapter into a standard power outlet and adjust the settings on the function control box, located on the (C) Ghost Base, as desired.

2. Settings:

LED MODE	This button will change the Ghost's LED effect. There are 4 different LED effects that can be cycled through; Fade On/Off Effect, Bottom to Top Lighting Effect, Fade On/Off Effect with Sudden Flash, and Steady On Main Features with Fade On/Off Secondary Features.
ON / MARCHÉ	This button will activate/deactivate the lights of the Towering Ghost.
TIMER / MINUTEUR	Timer begins daily cycles of ON for 6hrs, then lights off for 18hrs.
OFF-TRY ME / ARRÊT-ESSAIE-MOI	This setting will deactivate the lights of the item. This mode also allows the item to be activated if triggered by using a Step Here Try Me Activation Pad (Not Included). The item will operate for one function cycle with each Try Me activation.

WARNING:

- Lay product down before a storm or strong winds.
- Don't climb or pull on product.
- Don't add to or modify product.
- Assemble and place the product on level surfaces only.
- Don't push or tilt product.

WARNING

This item is not a toy and should be used for decoration only. This item contains small parts that can be a choking hazard. Keep all plastic and wire parts away from children.

1. Please use the adapter supplied by manufacturer.
 2. Please assemble item according to instructions. Connect all wires according to matching color.
 3. Children should be supervised by adults. Item should not be grabbed, as it becomes a tipping hazard. Keep flammables away from the adapter, as it heats up during operation.
- Please view all instructions carefully before assembling. Save this instruction sheet for future reference.

CARE AND STORAGE INSTRUCTIONS

When not in use, store this product in its original packing. Keep away from heat and moisture.

This device complies with Part 15 of the FCC Rules. Operation is subject to the following two conditions: (1) This device may not cause harmful interference, and (2) this device must accept any interference received, including interference that may cause undesired operation.

CAUTION: Changes or modifications not expressly approved by the party responsible for compliance could void the user's authority to operate the equipment.

NOTE: This equipment has been tested and found to comply with the limits for a Class B digital device, pursuant to Part 15 of the FCC Rules. These limits are designed to provide reasonable protection against harmful interference in a residential installation. This equipment generates, uses, and can radiate radio frequency energy and, if not installed and used in accordance with the instructions, may cause harmful interference to radio communications. However, there is no guarantee that interference will not occur in a particular installation. If this equipment does cause harmful interference to radio or television reception, which can be determined by turning the equipment off and on, the user is encouraged to try to correct the interference by one or more of the following measures: Reorient or relocate the receiving antenna, increase the separation between the equipment and receiver. Connect the equipment into an outlet on a circuit different from that to which the receiver is connected. Consult the dealer or experienced radio/TV technician for help.

CAN ICES-003(B)/NMB-003(B)

THE TOWERING GHOST IS COMPATIBLE WITH EXTERNAL TIMERS AND PRESERVES ITS SETTING WHEN THE POWER IS TURNED OFF/ON.

1



WE SUGGEST AT LEAST TWO ADULTS FOR ASSEMBLY

2



NO MOVING AFTER FULLY ASSEMBLED

3



LEVEL AREA ONLY

7



USE WEIGHTS ON THE BASE

8



DO NOT DISPLAY DURING STRONG WINDS

4



DO NOT PUSH OR TILT

5



DO NOT CLIMB OR PULL ON

6



DO NOT ADD TO OR MODIFY (ADD COSTUME KITS FROM THE HOME DEPOT ONLY)

9

CONTACT US IF LIGHTS DON'T WORK



10

CONTACT US

1-855-434-6543 (1-855-HDHoliday)

