

FEEL BETTER.
TRAVEL FARTHER.

SHOCKWAVE

MARINE SUSPENSION SEATING

SHOCKWAVE S5 SENTINEL



SW-07823-B

The Shockwave S5 Sentinel provides comfort and safety to boaters, offering them an experience they've never had before. It offers a smoother, safer and more comfortable ride, protecting occupants from the shock of wave impact. Recreational boaters can stay out longer and travel farther with less fatigue.

- ✓ Easy to install
- ✓ Can be paired with almost any seat
- ✓ Designed and manufactured in Canada



- ✓ Performance tuned 4-link design for a smooth ride
- ✓ Purpose built marine FLOAT H2O shock absorber by FOX Racing
- ✓ The finest corrosion resistant marine grade components and coatings
- ✓ The leader in marine suspension seating industry for over 20 years



SW-07823-W

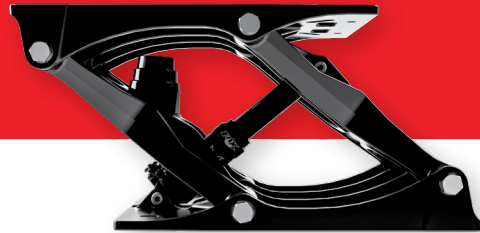


S5 SENTINEL BENEFITS

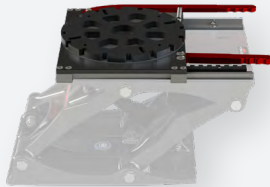
- Improved Performance and Strength
- Increased Lateral Stability
- Designed and Manufactured in Canada
- Fully Adjustable SHOCKWAVE FOX FLOAT H2O Shock Absorber for All Payloads and Sea Conditions
- Surge Protection: Suspension Travel is 4-inch Vertical and 1.5-inch Forward, Mitigating Deceleration Associated with Wave Impacts
- Adjustable Compression and Rebound Rate
- Minimal Parts Count and Simple Construction

S5 SENTINEL FEATURES

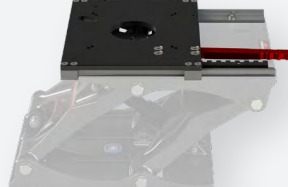
- Marine Grade Aluminum Die Cast Construction with Tri-valent Chromate Primer and Military Grade Powder Coat
- Stable 8 Pivot Design for higher loads and a smoother ride
- High Life Cycle IGUS Bushings
- 316 Stainless Steel Hardware
- Easy to mount and adapt to current seating



S5 SENTINEL ACCESSORIES



SWIVEL SLIDE
SW-05488



SLIDE
SW-05489



SWIVEL
SW-05592



White
Black

COMMANDER MID-BACK SEAT
SW-04920-B | SW-04920-W



COMMANDER HIGH-BACK SEAT
SW-06328-B



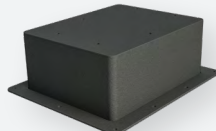
SHOCK PUMP
SW-01983



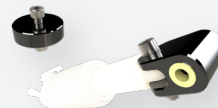
FOOTREST
SW-07507



CUP HOLDER WITH ALUMINUM BRACKET
SW-01688



6-INCH RISER BOX
SW-07251



SHOCK EXTENDER KIT
SW-05489



SEAT ADAPTER KIT
SW-08290

WWW.SHOCKWAVESEATS.COM

✉ sales@shockwaveSeats.com ☎ 778-426-8545