



How to: Motor Replacement

Maestro, Maestro Plus, Preciso, Encore, Virtuoso, Virtuoso+,

Time: 25 min

Difficulty: Moderate

Tools/supplies: Flat head screwdriver. Phillips screwdriver. T10 screwdriver.

Metric Hex Wrenches (3 and 4mm). Cloth or rag.

Parts: Motor (SKU6026)

Additional Resources: [Case Removal \(PDF/video\)](#)

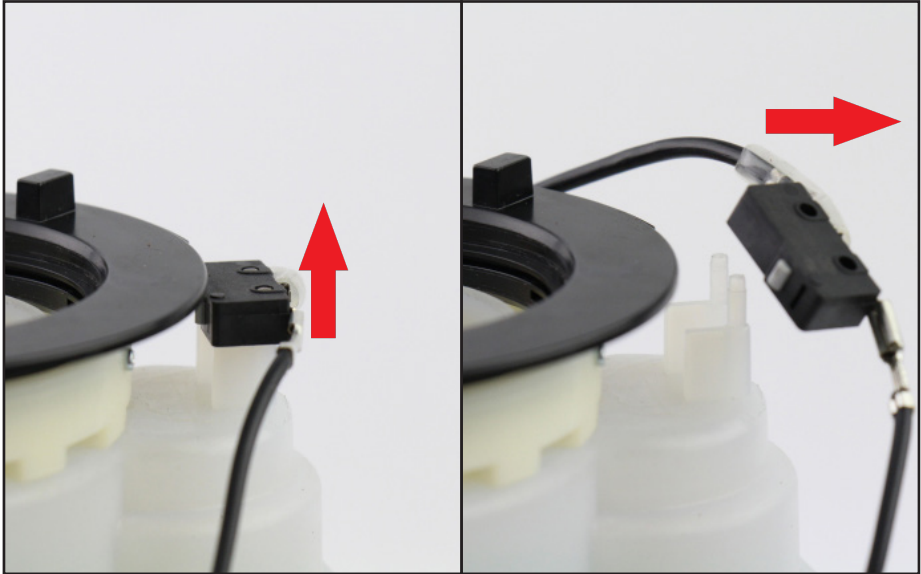
***** Unplug the grinder from power supply *****

Remove the case using our case removal guide.

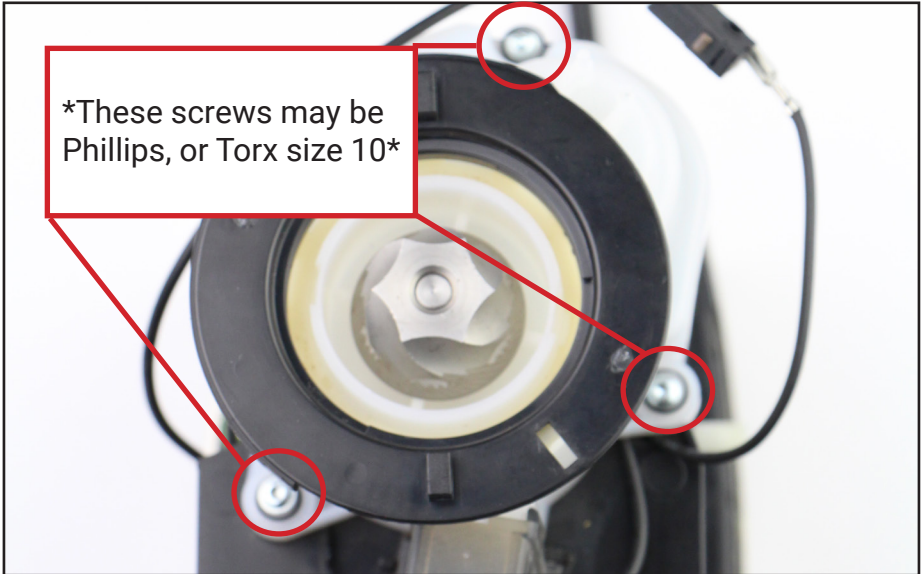




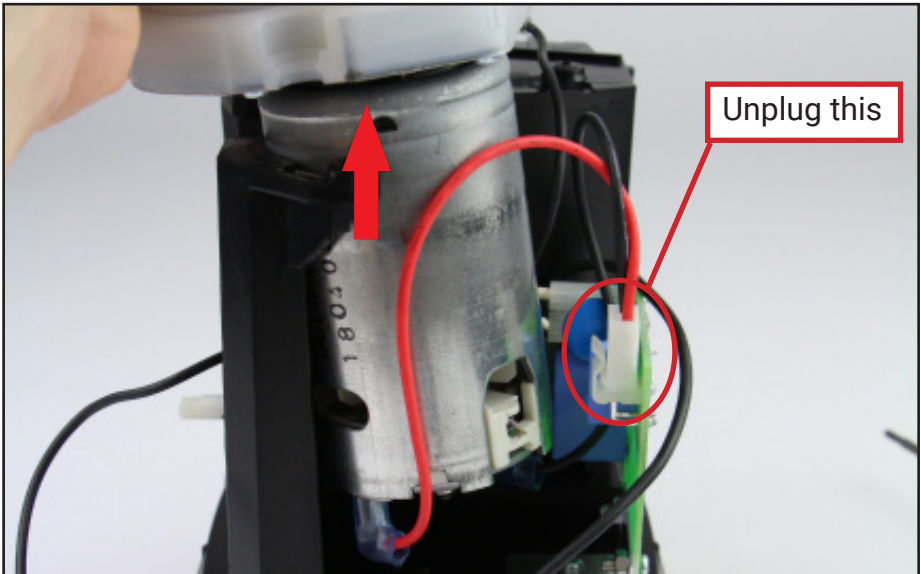
Lift the safety interlock switch off its posts.



Remove the 3 screws securing the gearbox/motor assembly to the chassis.



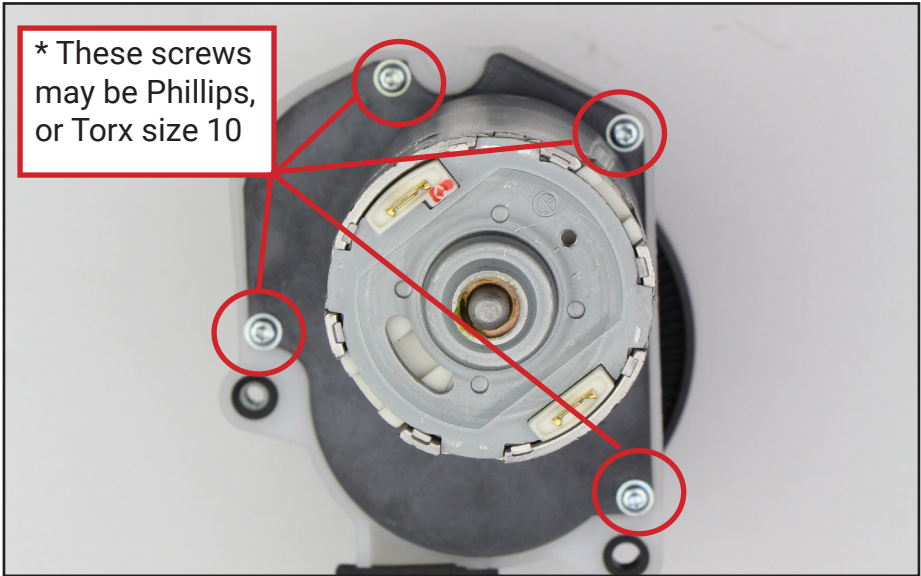
Unplug the motor and lift the gearbox/motor assembly from the chassis.



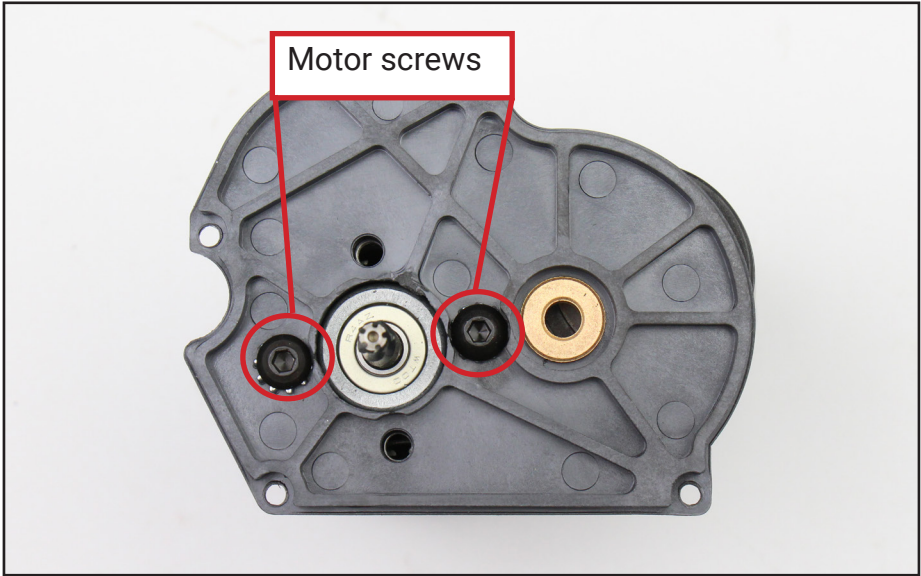
*If the motor wires are hard-wired to the circuit board, mark which color wire goes to each terminal to prevent the burr from spinning the wrong way after reassembly. It should spin clockwise.



Remove the 4 screws securing the motor/motor plate to the gearbox housing.

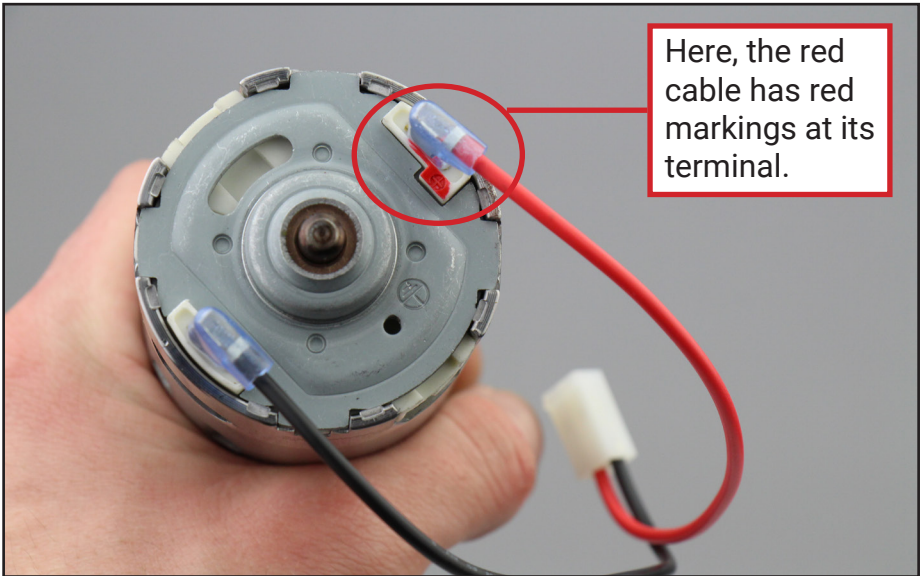


Pull the motor/motor plate out and set the gearbox aside. Remove the 2 screws securing the motor to the motor plate.



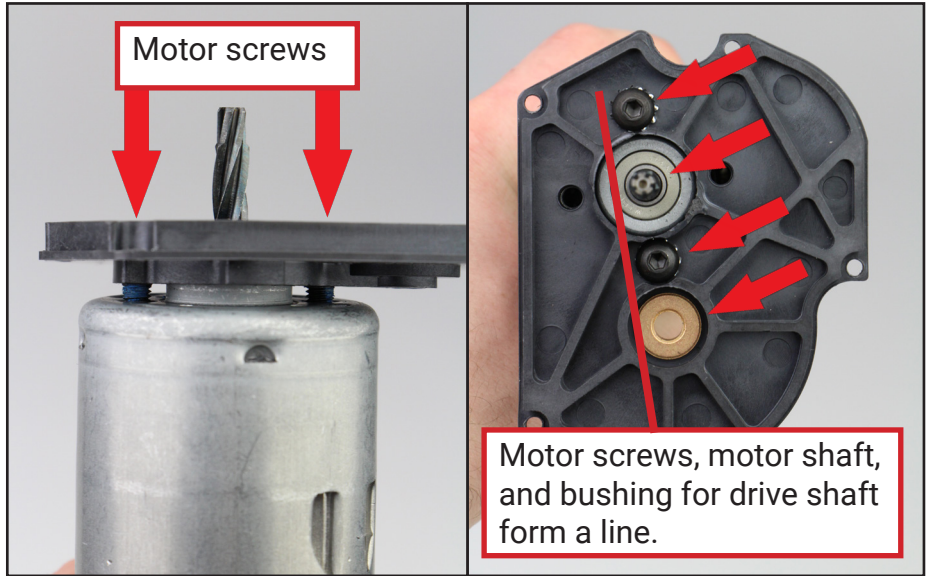
These screws may be 4mm hex, 3mm hex or Phillips

Check the new motor. If they aren't already, connect the new motor wires to the new motor. Connect the red wire to the spade with the L shaped base to ensure proper polarity and clockwise burr rotation.

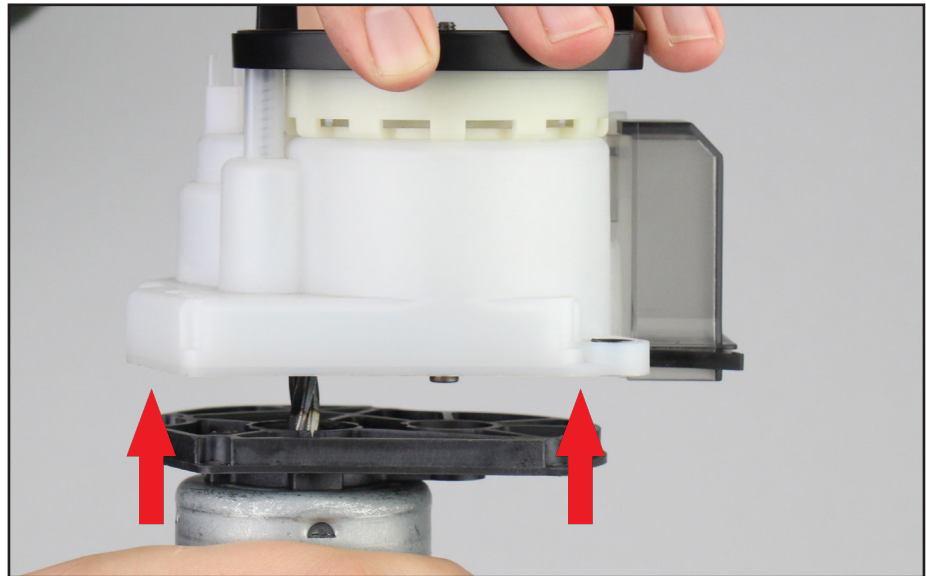




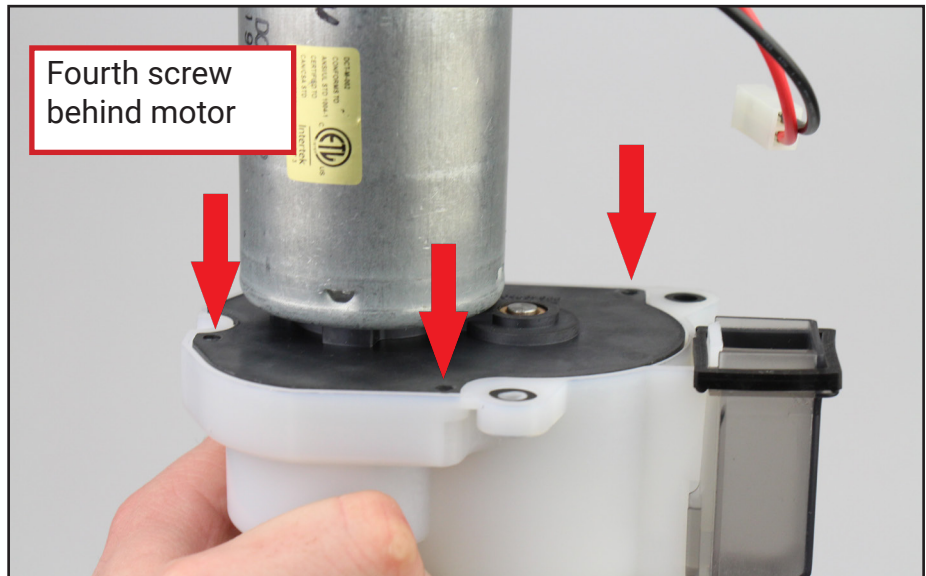
Install the new motor to the motor plate. Insert the screws in the 2 screw holes such that the screws, motor and bushing are all in a straight line. (See picture). The other holes remain empty.



Install the motor/motor plate into the gearbox housing.

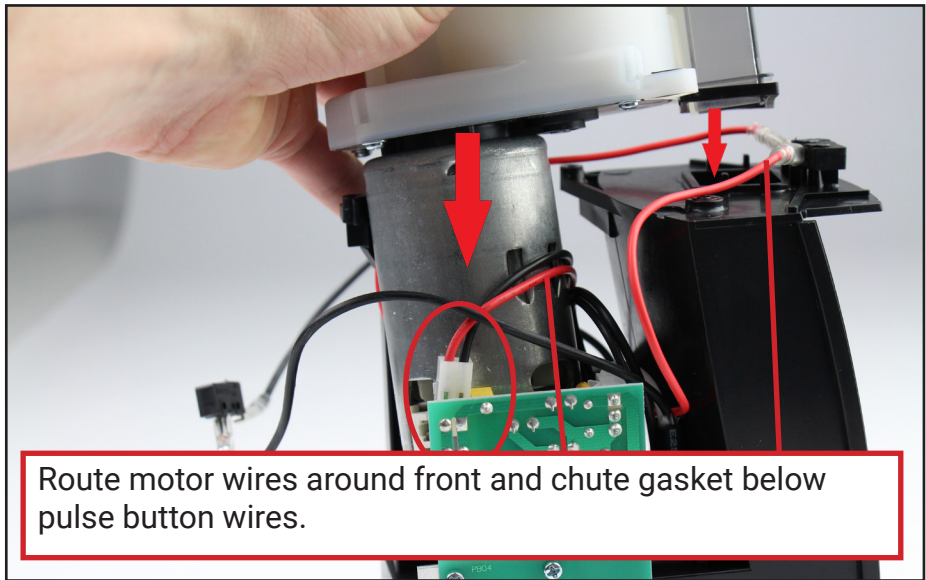


Tighten the screws in an X pattern to ensure even tension.

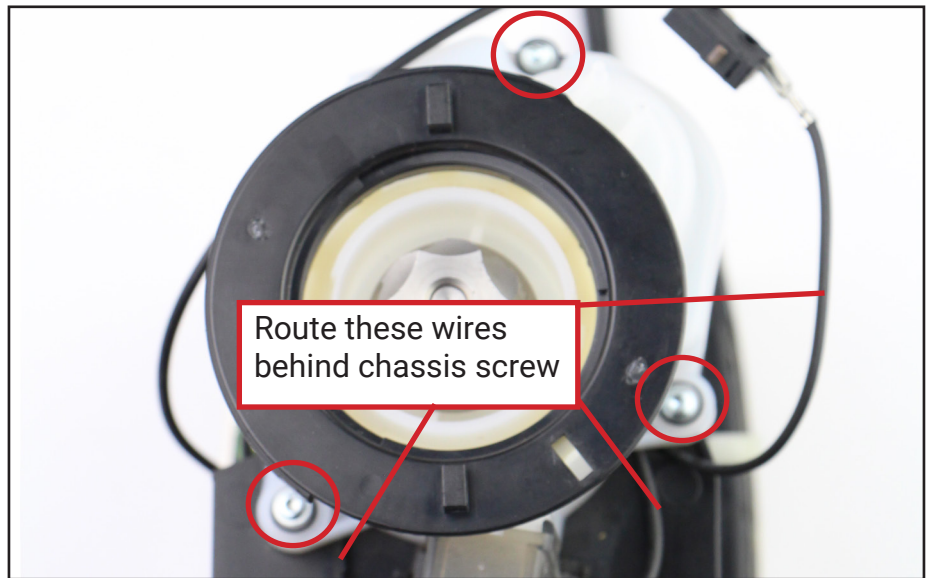




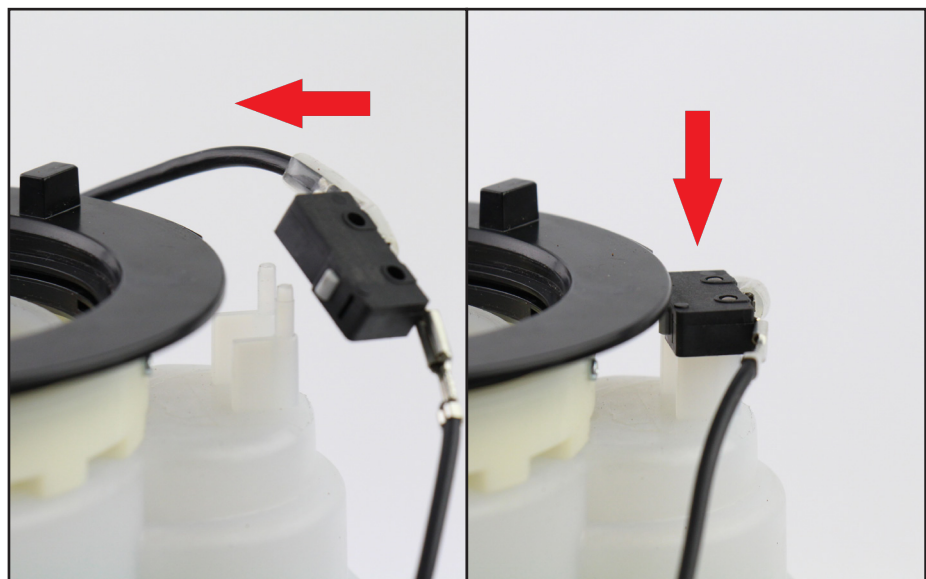
Install the gearbox/ motor assembly into the chassis, taking care to keep the chute gasket in place. Plug the motor cable into the board if not yet connected.



Then, secure the three screws which mount the assembly to the chassis.



Re-seat the safety interlock switch onto its posts. Ensure that the button side faces inward, and that the two posts are flush with the top of the switch.





Reinstall the case and knob to return the grinder to operation.

If you encounter any issues with re-installing the case, refer to our Case Removal Guide for re-installation troubleshooting.



If you have any questions, or encounter issues with this guide, please contact support@baratza.com