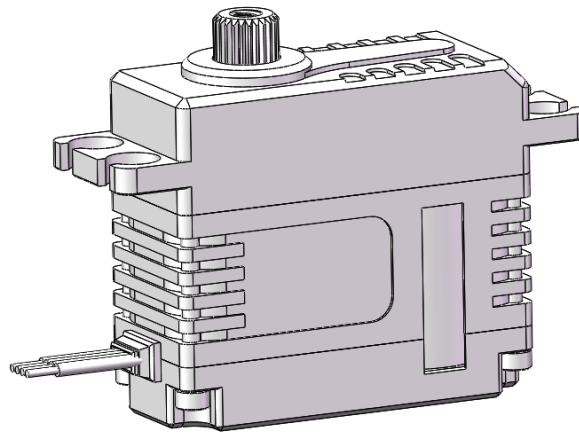


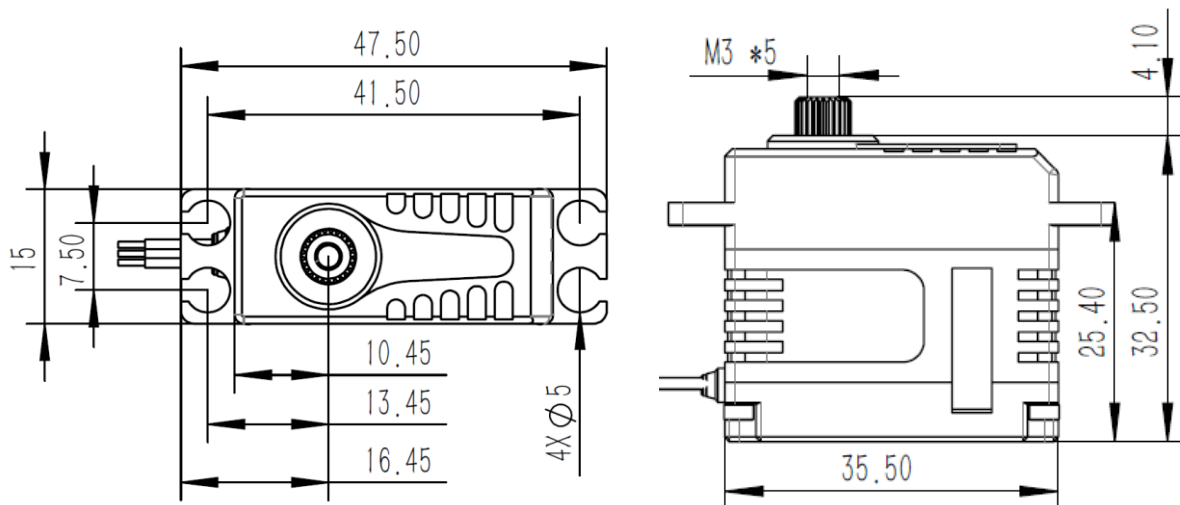
# A15-1812

## Technical Specification



### 1. Installation Dimensions

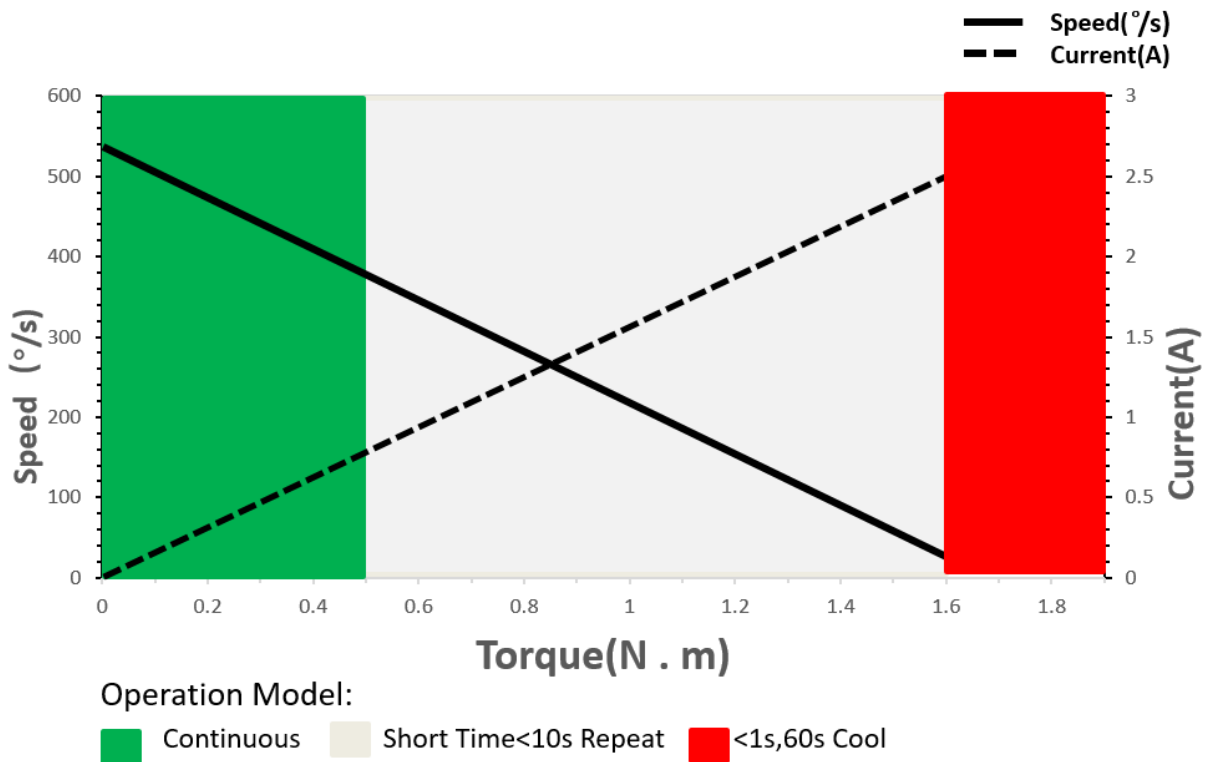
Case Dimensions	35.5mm*15mm*32.5mm ±0.2mm
Weight	42g ±10%



## 2. Operating Data

Operation Voltage(Rated)	DC7.4V
Operation Voltage Range	DC6.0V-8.4V
Rated Torque	0.5N.m@7.4V
Stalling torque	1.8N.m@7.4V
No-load Speed	0.12sec/60°@7.4V
Rated Speed	0.18sec/60°@7.4V
Travel Angle	±50° when 1000us-2000us
	±100° when 500us-2500us
Operating Temperature Range	-20°C.....+65°C

## 3. Performance



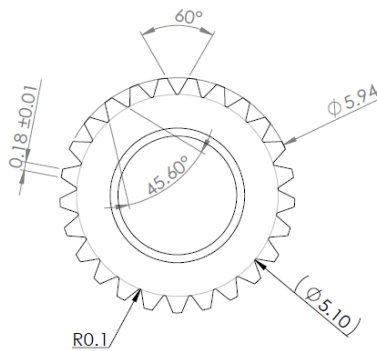
## 4. PWM Command Signal

Signal Voltage	TTL-Level: HIGH:min.3.3V,max.5.0V TTL-Level: Low:min.0.0V,max.1.5V
Pulse Lengths	500us - 2500us
Pulse Lengths for Position -100°/center/+100°	500us/1500us/2500us

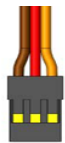
## 5. Materials and protective features

Case Material	Aluminum Alloy
Motor Type	Brushless
Gear Set Material	Hardened Steel
Position Sensor	Potentiometer
Connecting Cable	26AWG

## 6. Output Shaft Spline



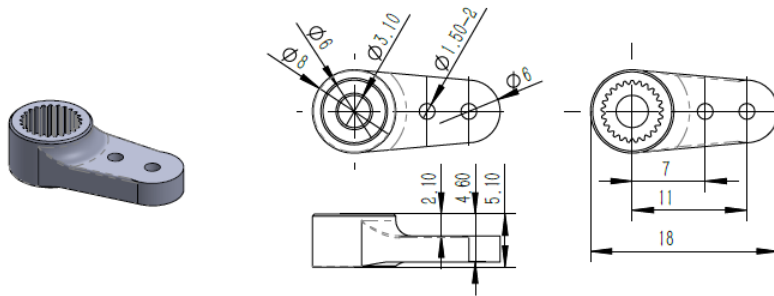
## 7. Electrical Connection

	Pin Assignment			
	1	Yellow	SIG	Command Signal
	2	Red	+V DC	Supply Voltage
	3	Brown	GND	Supply Ground, Signal Ground

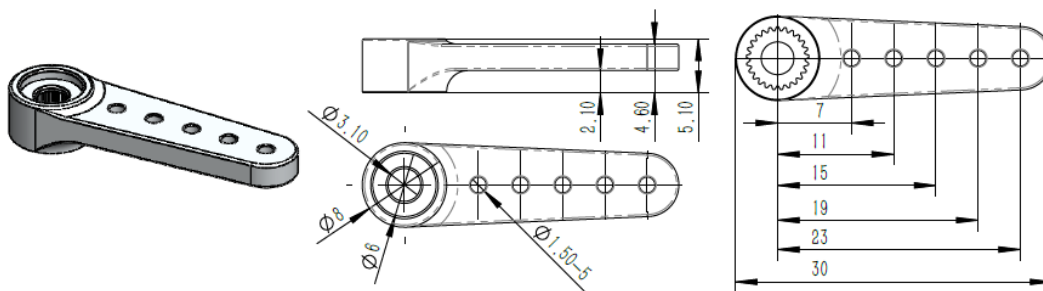
### 8. Accessories (Optionals)

Item	Item-No.
Aluminum Servo Arm (Single side)	<b>0625.11</b>
Aluminum Servo Arm (Single side)	<b>0625.23</b>
Aluminum Servo Arm (Single side)	<b>0625.40</b>
Aluminum Servo Arm (Double side)	<b>0625.60</b>

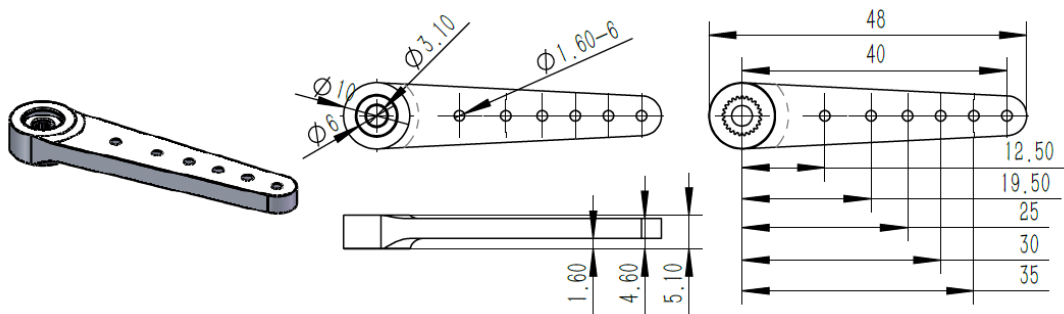
**Item No.: 0625.11**



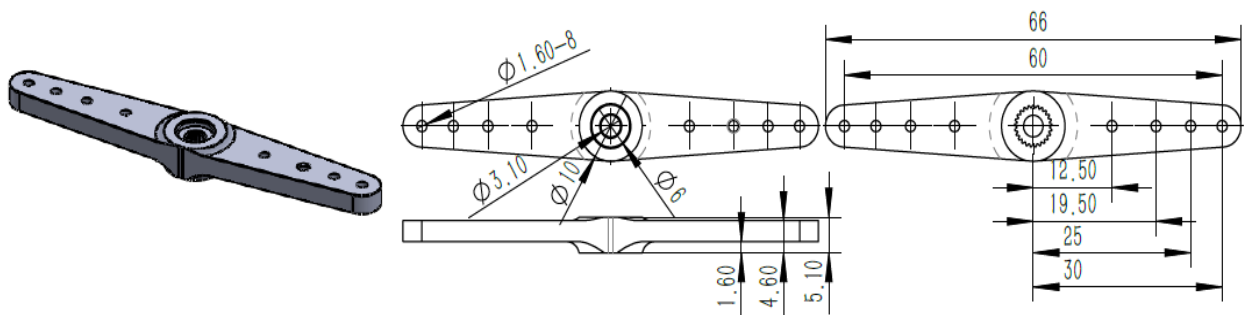
**Item No.: 0625.23**



**Item No.: 0625.40**



**Item No.: 0625.60**



## 9. Item Number System

<u>A15 - 1812</u>	
<b>Servo Class</b> 15mm Class	<b>Performance</b> 18: Stalling Torque (1.8N.m) 12: No-load Speed (0.12Sec/60°)