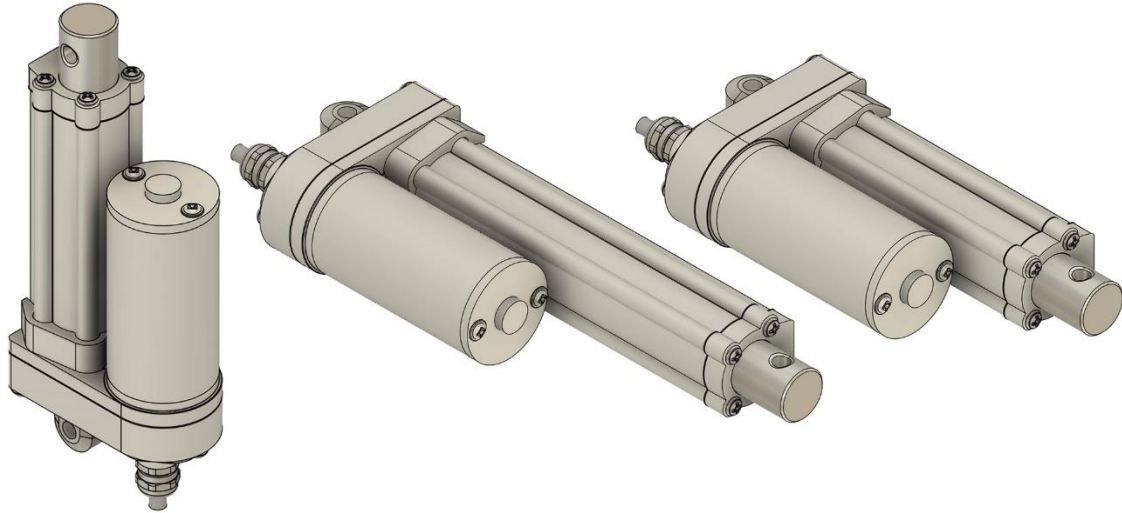


GLA700-2 12V DC Actuator (230AGR) – Summary Specifications

Updated 16.08.23



Gimson Robotics Item Reference	GLA700-2 (230AGR Version)
Motor	12V DC standard, brushed permanent magnet
Maximum Rated Load	700N (71kg)
Stroke Length	Standard sizes: 30mm, 50mm, 100mm <i>Other sizes available on a made-to-order basis</i>
Minimum Installation Length	For sizes <300mm Installation Length = (Stroke Length + 105mm) For sizes ≥300mm Installation Length = (Stroke Length + 120mm)
Current for Rated Load	2.8A
No-load Speed	9.2mm/s (at nominal voltage)
Rated Load Speed	6mm/s (at nominal voltage)
Maximum Duty	25% (up-to 2 mins continuous)
Stall Current	~5.8A (use overcurrent protection to prevent sustained stall)
Transmission	4-Stage all-metal spur gear gearbox, total ratio 21.14:1 Lead screw 3.175mm pitch, single-start
Weight	30mm stroke: 730g 50mm stroke: 760g 100mm stroke: 840g
Colour	Silver & Grey (painted cast aluminium body, painted steel motor casing)
Enclosure Rating	Static rating IP66, suitable for some outdoor use, though should still be protected from long term direct water exposure
Operating Temperature (Ta)	-15°C ~ 45°C
Cable	0.8m PVC insulated lead <i>Lead length and connectors can be customised</i>
Limit Switches	Internal fixed-position limit switches at the '0mm' and 'Stroke Length' positions, to automatically turn the actuator off when it reaches the far ends of travel. The limit switches (normally-closed microswitch contacts) include a snubber circuit in parallel with each of them, to suppress voltage spikes during switching and minimise EMI. Ensure that control is only with DC currents (not via PWM), unless you have tested for compatibility with your controller and operating cycle.
Product Standards	EN 55014-1: 2021 RoHS Directive 2015/863 (RoHS 3) EN 55014-2: 2021 <i>Be aware that EMC performance is dependent upon connected hardware</i>

Please refer to drawing and CAD models for dimensions, if you have any questions contact us at support@gimsonrobotics.com.