



Dear Customers and Friends:

We are proud to present the new Michigan Mobile Home Supply Parts and Accessories catalog. We are sure that you will find this a valuable resource for all your manufactured home supply needs.



michiganmobilehomesupply.com

1-888-264-5150



810-867-4671



734-469-5997



**3464 Ann Dr.
Flushing, MI 48433**



**15900 Wahrman Rd.
Romulus, MI 48174**



**Like us on facebook!
"Michigan Mobile
Home Supply"**



**Follow on Instagram!
[instagram.com/
mmhs.inc](https://www.instagram.com/mmhs.inc)**

IN LOVING MEMORY

Dedicated to

MATT KALISZ

July 22, 1968 - January 12, 2022

This catalog is hereby dedicated to the memory of Matthew Kalisz, an esteemed original founder of MMHS.

His unforgettable impact on the lives of our employees and customers is immeasurable.

It is with profound sorrow that we acknowledge the tremendous loss felt by the entire MMHS community.

May his soul find eternal rest.



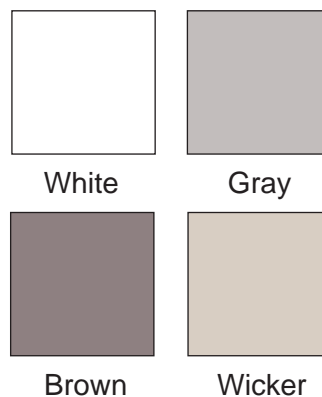
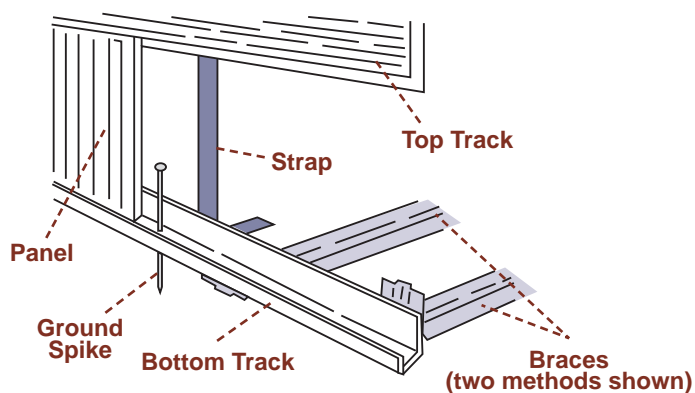
TABLE OF CONTENTS

SKIRTING SIDING STEPS	4 - 12
SETUP TRANSPORTATION	13 - 18
HEATING & COOLING	19 - 30
PLUMBING	31 - 46
WATER HEATERS	47 - 49
APPLIANCES	50 - 54
DOORS	55 - 61
WINDOWS	62 - 64
SKYLIGHTS	65
ROOF COATINGS SEALANTS	66 - 67
TOOLS SCREWS	68
KITCHEN & BATH	69 - 84
TRIM PANELING DRYWALL	85 - 88
ELECTRICAL	89 - 90
VENTS & CAPS	91 - 93
HARDWARE	94 - 95
SAFETY & MISC ITEMS	96
CARPET & VINYL FLOORING	97

Aluminum Skirting Estimation Calculator

FRENCHY'S ALUMINUM SKIRTING						
Average Height of Skirting Panel						
Home Size	Perimeter (linear feet)	18" - 24"	25" - 28"	29" - 36"	37" - 48"	Total Track Top & Bottom (each)
12 x 50	124	21	25	31	41	11
12 x 55	134	22	27	34	45	12
12 x 60	144	24	29	36	48	13
12 x 65	154	26	31	39	51	13
12 x 70	164	27	33	41	55	14
14 x 60	148	25	30	37	49	13
14 x 65	158	27	33	41	55	14
14 x 70	168	28	34	42	56	14
14 x 76	180	30	36	45	60	15
14 x 80	188	31	38	47	63	16
16 x 60	152	25	30	38	51	13
16 x 65	162	27	32	41	54	14
16 x 70	174	29	34	43	57	15
16 x 72	176	29	35	44	59	15
16 x 80	192	32	38	48	64	16
24 x 40	128	21	26	32	43	11
24 x 50	148	25	30	37	49	13
24 x 60	168	28	34	42	56	15
24 x 65	178	30	36	45	59	15
24 x 70	188	31	38	47	63	16
28 x 40	135	23	27	34	45	12
28 x 50	156	26	31	39	52	14
28 x 55	166	28	33	42	55	14
28 x 60	176	29	35	44	59	15
28 x 65	186	31	37	47	62	16
28 x 70	196	33	39	49	65	17

Frenchy's Aluminum Skirting



**SKIRTING PANEL (FRENCHY'S)
SOLID ALUMINUM (12" x 12')**
Roll formed .019 gauge aluminum. Overlapping panel. Available in baked-on enamel embossed surface.

- Panel - White **10-1205W**
- Panel - Gray **10-1205G**
- Panel - Brown **10-1205B**
- Panel - Wicker **10-1205A**

**SKIRTING PANEL (FRENCHY'S)
VENTED ALUMINUM (12' Lengths)**

- Vent Panel - White **10-1203W**
- Vent Panel - Gray **10-203G**
- Vent Panel - Brown **10-1203B**
- Vent Panel - Wicker **10-1203A**

**SKIRTING TOP TRACK (FRENCHY'S)
ALUMINUM (12' Lengths)**
Holds skirting in place on the home and conceals jagged top edge of panel. 5" frost cap allows for maximum expansion & contraction with frost heave.

- Top Track - White (12') **10-1206W**
- Top Track - Gray (12') **10-1206G**
- Top Track - Brown (12') **10-1206B**
- Top Track - Wicker(12') **10-1206A**

**SKIRTING BOTTOM TRACK (FRENCHY'S)
ALUMINUM (12' Lengths)**
Holds skirting to the ground and conceals jagged bottom edge of panel.

- Bottom Track - White (12') **10-1208W**
- Bottom Track - Gray (12') **10-1208G**
- Bottom Track - Brown (12') **10-1208B**
- Bottom Track - Wicker(12') **10-1208A**

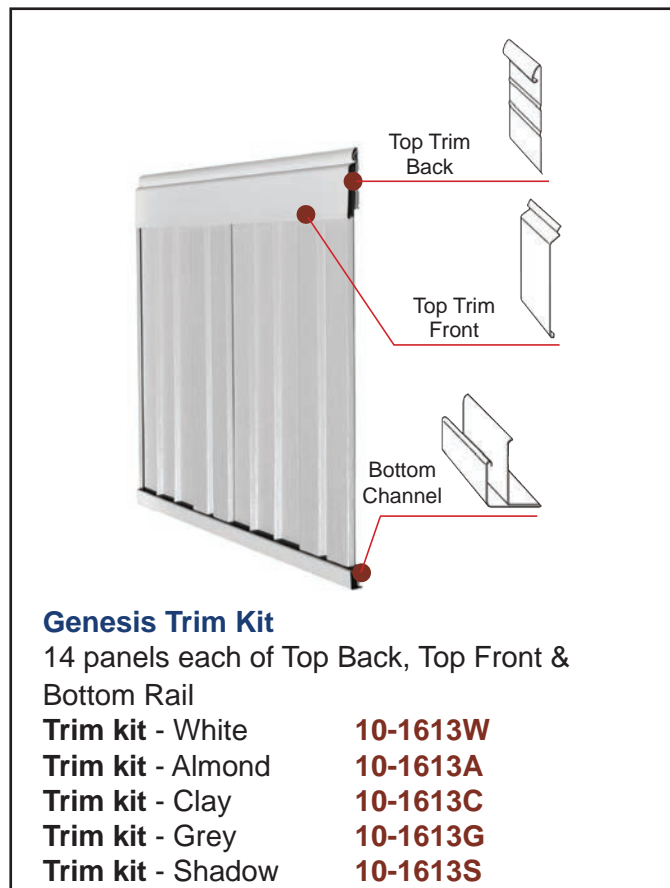
ALUMINUM BRACES & STRAPS
Braces are ideal for securing bottom track in place. Straps are used to limit the distance between top and bottom track due to ground erosion.

- Brace - Bottom track **10-1209B**
- Strap - Top to bottom track **10-1209S**

**SPIKE & NAIL
HARDWARE KIT
10-1029**

Rustique RIBB Vinyl Skirting

A VINYL SKIRTING PANEL THAT FINALLY DEFEATS THE WEED WACKER!



Genesis Trim Kit

14 panels each of Top Back, Top Front & Bottom Rail

- | | |
|-------------------|-----------------|
| Trim kit - White | 10-1613W |
| Trim kit - Almond | 10-1613A |
| Trim kit - Clay | 10-1613C |
| Trim kit - Grey | 10-1613G |
| Trim kit - Shadow | 10-1613S |

- Warranted Resistance to Weed Wacker Damage
- Patent pending design
- 92 ounce panel (.042-.044 gauge) extruded for structural integrity
- Engineered for greater impact durability and wind resistance
- Embossed stucco finish for a tailored appearance and ease of maintenance
- Recessed vents for a clean appearance
- 16 inch wide panels for faster installs

Weed wacker proof vinyl skirting.

Warranted to be string trimmer resistant and the most heavy duty vinyl skirting available today.

SOLID PANELS

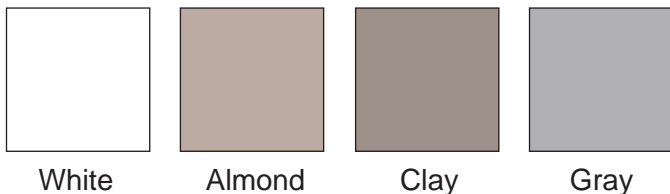
- | | |
|---------------------------|----------------------|
| RIBB Solid Panel - White | 10-1712 |
| RIBB Solid Panel - Almond | 10-1713A |
| RIBB Solid Panel - Clay | Special Order |
| RIBB Solid Panel - Gray | 10-1713G |
| RIBB Solid Panel - Shadow | 10-1715S |

VENTED PANELS

- | | |
|-----------------------------|----------------------|
| RIBB Vented Panel - White | 10-1714RRV |
| RIBB Vented Panel - Almond* | Special Order |
| RIBB Vented Panel - Clay* | Special Order |
| RIBB Vented Panel - Gray* | Special Order |
| RIBB Vented Panel - Shadow* | Special Order |

*These colors are available by special order.

RapidWall Insulated Vinyl Skirting



White

Almond

Clay

Gray



FEATURES

- Full 2" thick EPS foam backed panel
- 20-year insect warranty
- Adaptable for use in frost protected shallow foundation systems
- Easy installation without additional framework
- Available in White, Gray and Almond
- 9R+ Insulation factor
- Engineered to comply with HUD
- Wind loading zones I,II,III
- No warranty restrictions for ground contact
- Automatic vents available in White, Gray, Brown and Black



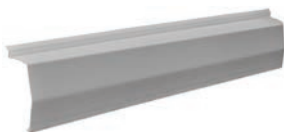
Rapid Wall Insulated Panel 4' x 12'

- Panel - White **10-1812W**
- Panel - Almond **10-1812A**
- Panel - Clay **10-1812C**
- Panel - Gray **10-1812G**



Rapid Wall Trim (16 pcs)

- Trim Kit - White **10-1813W**
- Trim Kit - Almond **10-1813A**
- Trim Kit - Clay **10-1813C**
- Trim Kit - Gray **10-1813G**



Rapid Wall Top Front Rail

- Top Front - White **10-1816W**
- Top Front - Almond **10-1816A**
- Top Front - Clay **10-1816C**
- Top Front - Gray **10-1816G**



Rapid Wall Top Rail Back

- Top Rail Back - White **10-1815W**
- Top Rail Back - Almond **10-1815A**
- Top Rail Back - Clay **10-1815BC**
- Top Rail Back - Gray **10-1815GB**



Rapid Wall Bottom Rail

- Bottom Rail - White **10-1817W**
- Bottom Rail - Almond **10-1817A**
- Bottom Rail - Clay **10-1817C**
- Bottom Rail - Gray **10-1817G**



Rapid Wall Accessories

- 12' Corners - White **10-1815WR**
- 12' Corners - Almond **Special Order**
- 12' Corners - Clay **10-1815C**
- 12' Corners - Gray **10-1815G**

Genesis Vinyl Skirting



Genesis Top Rail Back

- Top Rail Back - White** 10-1615W
- Top Rail Back - Almond** 10-1615A
- Top Rail Back - Clay** 10-1615C
- Top Rail Back - Grey** 10-1615G
- Top Rail Back - Shadow** 10-1615S



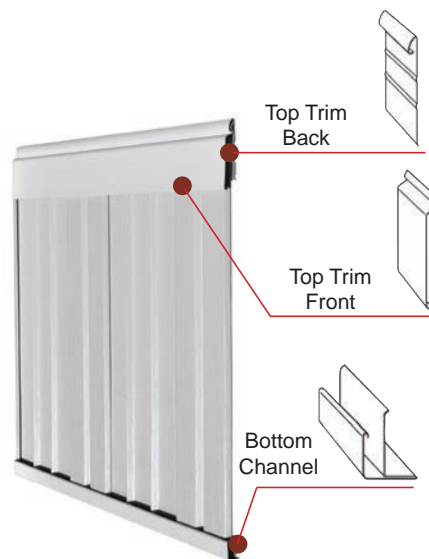
Genesis Top Rail Front

- Top Rail Front - White** 10-1616W
- Top Rail Front - Almond** 10-1616A
- Top Rail Front - Clay** 10-1616C
- Top Rail Front - Grey** 10-1616G
- Top Rail Front - Shadow** 10-1616S



Genesis Bottom Rail

- Bottom Rail - White** 10-1617W
- Bottom Rail - Almond** 10-1617A
- Bottom Rail - Clay** 10-1617C
- Bottom Rail - Grey** 10-1617G
- Bottom Rail - Shadow** 10-1617S



Genesis Trim Kit

14 panels each of Top Back, Top Front & Bottom Rail

- Trim kit - White** 10-1613W
- Trim kit - Almond** 10-1613A
- Trim kit - Clay** 10-1613C
- Trim kit - Grey** 10-1613G
- Trim kit - Shadow** 10-1613S

Vanguard Vented Vinyl Skirting

Vinyl Skirting Calculation Chart

Typical Home Size (ft)	8 x 32	8 x 35	12 x 65	12 x 70	14 x 60	14 x 65	14 x 70	14 x 76	14 x 80	16 x 70	16 x 80	24 x 50	24 x 60	24 x 65	24 x 70	28 x 65	28 x 70	28 x 80	32 x 70	32 x 80
Linear Feet	80	86	146	156	140	150	160	172	180	164	184	140	160	170	180	178	188	208	196	216
Avg. Height	Number of 12 ft Panels Required																			
18"	9	10	16	17	15	16	17	19	19	18	20	15	17	18	19	19	20	23	21	24
23"	10	11	19	20	18	19	20	22	23	21	23	18	20	22	23	23	24	26	25	27
28"	12	13	22	24	21	23	24	26	27	25	28	21	24	26	27	27	28	32	30	33
35"	15	17	28	30	27	29	30	33	34	31	35	27	30	32	34	34	36	39	37	41
42"	20	22	37	39	35	38	40	43	45	41	46	35	40	43	45	45	47	52	49	54
	Number of 11 Foot - 8 Inch Trim Components Required																			
Ground Channel	7	8	13	14	12	13	14	15	16	15	16	13	14	15	16	16	17	18	17	19
Top Trim Mounting	7	8	13	14	12	13	14	15	16	15	16	13	14	15	16	16	17	18	17	19
Top Trim Front	7	8	13	14	12	13	14	15	16	15	16	13	14	15	16	16	17	18	17	19
Spikes	49	56	91	98	84	91	98	105	112	98	112	91	98	105	112	112	119	130	123	135



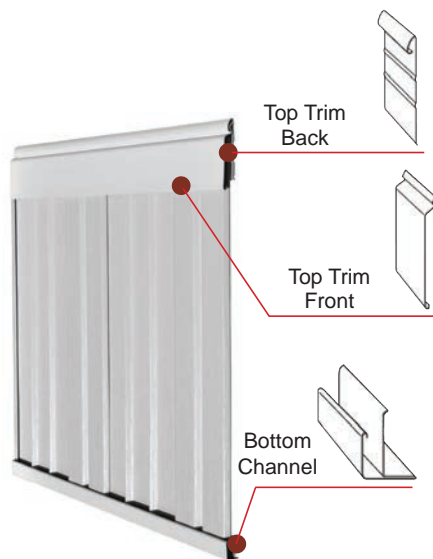
Vanguard Solid Panel 16"

- Panel - White **10-1712W**
- Panel - Almond **10-1712A**
- Panel - Clay **10-1712C**
- Panel - Grey **10-1712G**
- Panel - Shadow **10-1712S**



Vanguard Vented Panel 16"

- Panel - White **10-1714W**
- Panel - Almond **10-1714A**
- Panel - Clay **10-1714C**
- Panel - Grey **10-1714G**
- Panel - Shadow **10-1714S**



Genesis Trim Kit

14 panels each of Top Back, Top Front & Bottom Rail

- Trim kit - White **10-1613W**
- Trim kit - Almond **10-1613A**
- Trim kit - Clay **10-1613C**
- Trim kit - Grey **10-1613G**
- Trim kit - Shadow **10-1613S**

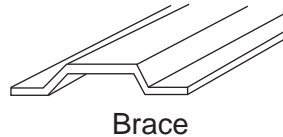
Skirting Accessories

ALUMINUM BRACES & STRAPS

Braces are ideal for securing bottom track in place. Straps are used to limit the distance between top and bottom track due to ground erosion.

Brace - Bottom track **10-1209B**

Strap - Top to bottom track **10-1209S**



Brace



Strap



**SPIKE & NAIL
HARDWARE KIT**
10-1029



WHITE AUTOMATIC FOUNDATION VENT

Thermostatically controlled and meet HUD requirements when installing an insulated foundation system. Easily installation into Rapid Wall skirting panel with no need for framing.

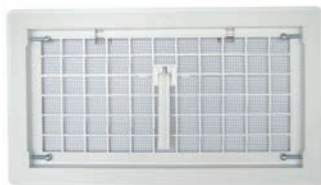
Foundation Vent **10-1029A**



UTILITY SKIRTING VENT FOUNDATION MASTER KIT (MOLDED)

Used in new construction or remodeling applications 1/4" molded screen for insect protection. 50 sq. ft. net-free ventilation area. Includes optional fixed louver.

Skirting Vent **10-1209V**



WHITE AUTOMATIC FOUNDATION VENT WITH PULL

Replacement manual open air foundation vent with push-pull damper. Easy to install with 4 screws.

Foundation Vent **10-1209VP**



WIND RODS FOR SKIRTING 24"

Keeps vinyl skirting from blowing out from under home during inclement weather conditions. Use 1 rod per every 3 to 4 skirting panels for optimal results. 32 per package.

Wind Rods **10-2008**



METAL SKIRTING BRACKET

Stops vinyl to vinyl expansion and contraction problems. Pre-drilled and slotted for easy adjustment. Easily attaches to rim joist.

Skirting Bracket **10-3343**

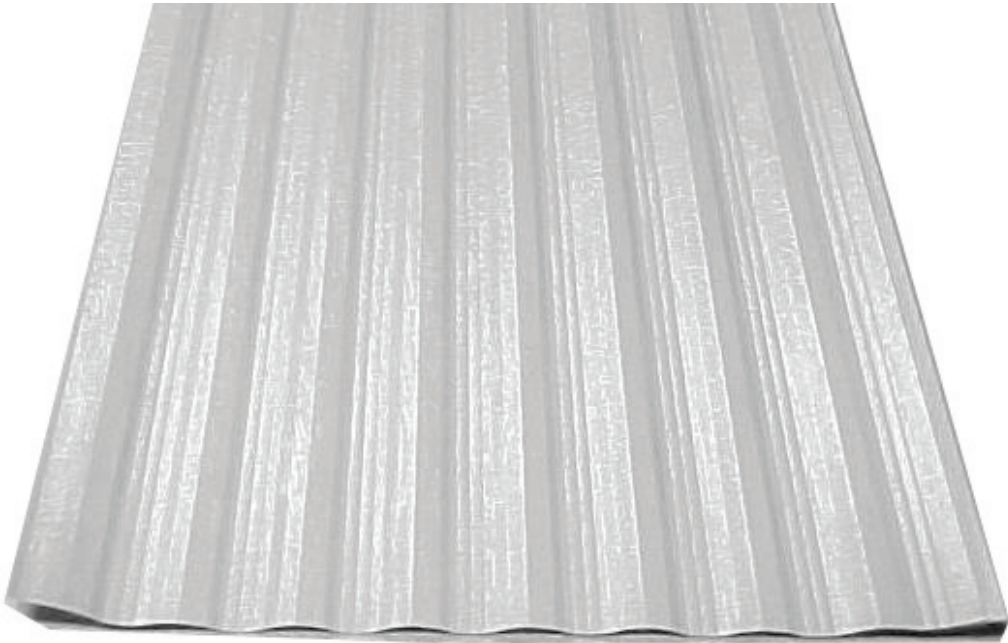


WHITE SKIRTING ACCESS DOOR 24" x 24"

Mounts in vinyl skirting track. Easy to install paintable ABS.

Skirting Access Door **10-2424W**

Aluminum Siding



White 4' x 96" Aluminum Siding
Panel - White **10-1200W**

Wood Pressure Treated Entry Steps



Left

Straight

Right



Full complete pressure treated steps. Meets B.O.C.A. code.

Part Number	Description	Riser Height	Overall Height	Landing Depth	Landing Width	Side Rail	Platform/ Back Rail
244040LB	Left Approach w/ Left Side & Back Rail	8"	24"	40"	40"	Included	Included
244040RB	Right Approach w/ Right Side & Back Rail	8"	24"	40"	40"	Included	Included
244040S	Front Approach with Left & Right Side Rails	8"	24"	40"	40"	Included x2	
284040LB	Left Approach w/ Left Side & Back Rail	7"	28"	40"	40"	Included	Included
284040RB	Right Approach w/ Right Side & Back Rail	7"	28"	40"	40"	Included	Included
284040S	Front Approach with Left & Right Side Rails	7"	28"	40"	40"	Included x2	
324040LB	Left Approach w/ Left Side & Back Rail	8"	32"	40"	40"	Included	Included
324040RB	Right Approach w/ Right Side & Back Rail	8"	32"	40"	40"	Included	Included
324040S	Front Approach with Left & Right Side Rails	8"	32"	40"	40"	Included x2	
364040LB	Left Approach w/ Left Side & Back Rail	8"	36"	40"	40"	Included	Included
364040RB	Right Approach w/ Right Side & Back Rail	8"	36"	40"	40"	Included	Included
364040S	Front Approach with Left & Right Side Rails	8"	36"	40"	40"	Included x2	
404040LB	Left Approach w/ Left Side & Back Rail	8"	40"	40"	40"	Included	Included
404040RB	Right Approach w/ Right Side & Back Rail	8"	40"	40"	40"	Included	Included
404040S	Front Approach with Left & Right Side Rails	8"	40"	40"	40"	Included x2	
424040LB	Left Approach w/ Left Side & Back Rail	7"	42"	40"	40"	Included	Included
424040RB	Right Approach w/ Right Side & Back Rail	7"	42"	40"	40"	Included	Included
424040S	Front Approach with Left & Right Side Rails	7"	42"	40"	40"	Included x2	
484040LB	Left Approach w/ Left Side & Back Rail	8"	48"	40"	40"	Included	Included
484040RB	Right Approach w/ Right Side & Back Rail	8"	48"	40"	40"	Included	Included
484040S	Front Approach with Left & Right Side Rails	8"	48"	40"	40"	Included x2	

State Approved Foundation Systems

Needed Per Setup:

- (2) Lateral Struts
- (2) Longitudinal Struts
- (2) LSD Hardware Kits



LONGITUDINAL STRUTS

Used for up to 3 blocks or 24" pier height.

39" Longitudinal Struts **14-1102**

LATERAL STRUTS

5' Lateral Struts **14-1103**

LATERAL HARDWARE KIT

Goes with Lateral Struts used for solo concrete system.

Lateral Kit **14-LATE**

LONGITUDINAL KIT

Goes with Longitudinal Struts used for solo concrete system.

Longitudinal Kit **14-LONG**

LATITUDINAL / LONGITUDINAL ARM

For solo dry systems.

39" Lat / Long Arm **14-3011**

44" Lat / Long Arm **14-3012**

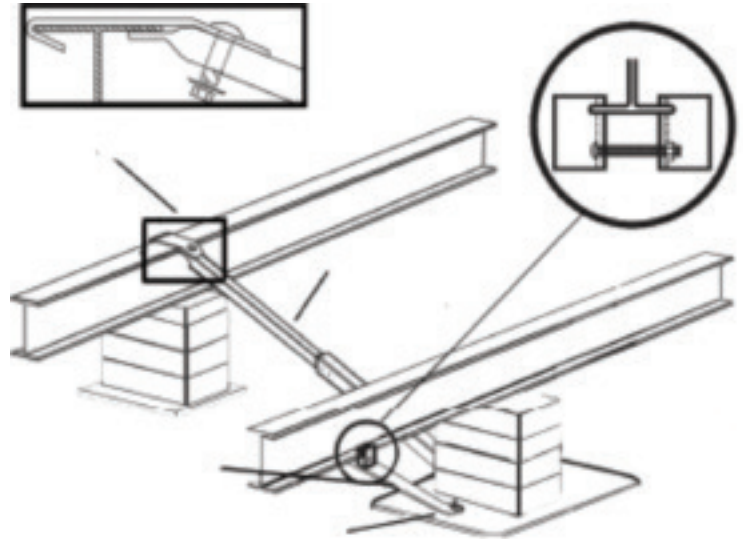
54" Lat / Long Arm **14-3013**

65" Lat / Long Arm **14-3014**

60" (5') Lat / Long Arm **14-3015**

LATITUDINAL / LONGITUDINAL SOLO PAN SYSTEM

39" Arm Pan System **14-3011PAN**



FOUNDATION SYSTEM

44" 1100V System **14-3011NPIER**

54" Solo Dry No Pier **14-3012NPIER**

SHORT BARS

44" Short Bar **14-3000**

53" Short Bar **14-3001**

60" Short Bar **14-3002**

PANS

Pan Only **14-3010**

Pan Lateral Hardware **14-3031**

Pan Long. Hardware **14-3032**



LONGITUDINAL I-BEAM CONNECTOR

I-Beam Connector **14-OTLTK**

Setup Equipment



VAPOR BARRIERS

Black poly film sheeting, 6 mil.

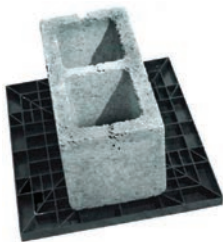
16' x 100' Black **14-16100**
20' x 100' Black **14-20100**



CLEAR VAPOR BARRIER

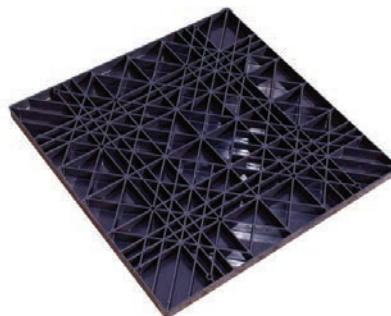
Clear poly film sheeting, 6 mil.

20' x 100' Clear **14-21100C**



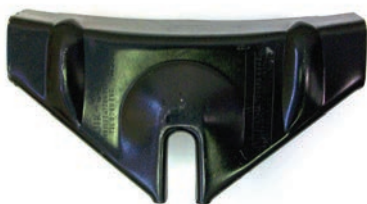
ABS PIER PADS

17 1/2" x 22 1/2" **14-1722**
17 1/2" x 25 1/2" **14-3026**



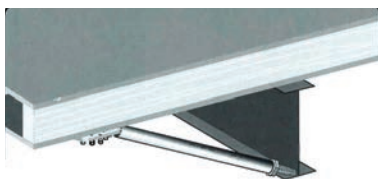
ABS FOUNDATION PADS

24" x 24" **14-3025**



LATERAL STABILIZER PLATES

Lateral Stabilizer **14-3028**



ADJUSTABLE OUTRIGGERS

Adjusts flooring and frame to assist doors and windows to operate properly.

14' Wide w/Hardware **14-3052**
16' Wide w/Hardware **14-3051**
Hardware Bag **14-9046**



TRACTION MATS

2' x 8' **14-4828**

Setup Equipment



HARDWOOD CAP BOARDS

- 1" x 8" x 16" (Single) 95-4001
- 2" x 8" x 16" (Single) 95-4002



HARDWOOD WEDGES

- 4" Wedges (Single) 95-4000
- 3 1/2" Wedges (80/bag) 95-40000



WHITE CLOSE OFF TAPE

- 2" x 180' 60-7080C
- 4" x 180' 60-7080T



12 T Low Profile



12 T Standard



22 T Low Profile



22 T Standard

NORCO BOTTLE JACKS

- 12 Ton Low Profile 75-9125
- 12.5 Ton Standard 75-9124
- 22 Ton Low Profile 75-9127
- 22 Ton Standard 75-9126

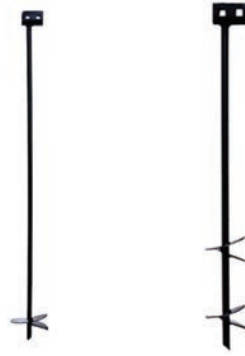
Setup Equipment



CROSS DRIVE ANCHORS

For use in rock only. Heads require 2 rods. Not code approved in all areas.

Cross Drive Anchors 14-3030
3/4" x 30" Rods 14-3030R



ROD HELIX ANCHORS

Designed for light to medium density soils. Code approved in many areas.

42 3/4" Single 6" Disk 14-3060
30 3/4" Twin 6" Disk 14-3027



WHITE CLOSE UP FILM (DOUBLE WIDE WRAP)

Poly-vinyl for protection of home during transportation.

14' x 300' White 14-31120



PATIO ANCHOR HEADS

Head only.

Patio Anchor Head 14-3048



HEX LAG BOLTS WITH WASHERS

3/8" x 5" 80-2000L
3/8" x 6" 80-2001L



EXPANSION BOLTS

5/8" x 3"
Expansion Bolts 14-3048EB



LAG BOLT WASHERS

3/8" Washers 14-WASHER



SPLIT BOLTS WITH NUT

3" split bolts for anchors and straps.
Split Bolt with Nut 14-3045

Setup Equipment



FRAME HOOK STRAPS

- 7' Strap with Hook 14-3049
- 8' Strap with Hook 14-3049H
- 10' Strap with Hook 14-3049HL



STRAP PROTECTORS

- Strap Protectors 14-STRAPPRO



BUCKLE STRAPS

- 7' Strap with Buckle 14-3049B
- 8' Strap with Buckle 14-30498
- 10' Strap with Buckle 14-3049BL



SWIVEL CONNECTOR STRAPS

- 7' Strap with Buckle 14-OTSQ



SPRAY ADHESIVE

- APC # 79 12 oz can 60-7034

Setup Equipment



EASYHEAT[®]

- For metal and plastic water pipe supplies
- Protects to -60°F (-51°C)
- Easy to install, assembly required



HEAT TAPE

By the Foot Heat Cable	55-5075F
100' Heat Cable	55-5075
300' Heat Cable	55-5076
500' Heat Cable	55-5081

HEAT TAPE END PLUG KIT End Kit

55-5080

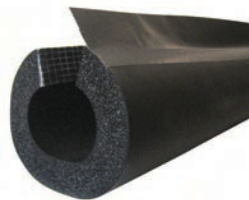
REPLACEMENT CAP

Replacement Cap **55-5083**



FOAM PIPE INSULATION (UNSLIT)

1 1/8" x 3/8" x 6' **55-5032S**



SELF-SEALING INSULATION

7/8" x 3/8" x 6' **55-5031**
1 1/8" x 3/8" x 6' **55-5032**



FIBERGLASS INSULATION

3" x 35' Insulation **55-5020**

Split System Air Conditioners

Gibson - 13 SEER - 1.5 to 5 Ton Capacity



- 13 SEER, R-410A
- Single phase
- Copeland scroll compressor
- Full service brass valves
- Galvanized steel with polyester urethane coat finish
- Permanently lubricated PSC motor
- Removable top grille assembly
- High pressure switch
- Liquid line filter drier (included, field installed)
- One piece top/orifice
- Easy compressor and control access
- Composite base pan
- All-aluminum coils
- Powder-coated wire guard and mesh hail guard

GIBSON 13 SEER AIR CONDITIONERS

Part#	Model #	SEER	Nominal Ton	Nominal Cooling Capacity	Dimensions W x D x H
739765	WSA2BD4M1SN18K	13	1.5	18,000	22-3/4" x 22-3/4" x 24-1/2"
739766	WSA2BD4M1SN24KA	13	2.0	24,000	22-3/4" x 22-3/4" x 24-1/2"
739767	WSA2BD4M1SN30K	13	2.5	30,000	22-3/4" x 22-3/4" x 28-1/2"
739768	WSA2BD4M1SN36K	13	3.0	36,000	22-3/4" x 22-3/4" x 28-1/2"
739769	WSA2BD4M1SN42K	13	3.5	42,000	30-3/4" x 30-3/4" x 29-1/4"
739770	WSA2BD4M1SN48K	13	4.0	48,000	30-3/4" x 30-3/4" x 29-1/4"
739771	WSA2BD4M1SN60K	13	5.0	60,000	30-3/4" x 30-3/4" x 33-1/4"

A-Coils For Gibson 13 SEER Air Conditioners

- 13 SEER R-410A
- Downflow plate kit included
- Rifled copper tubing, enhanced aluminum fins
- Immersion-tested at 500 psi, then nitrogen pressurized and sealed
- Left-hand refrigerant and plumbing connections
- Liquid line Schrader valve for hiss-testing
- Heavy duty polypropylene drain pan (†)
- Drain connection: single left-hand 3/4" FPT
- Condensate drain elbow and flexible drain tubing included
- AHRI certifiable with all brands of A/C and heat pump systems
- ETL listed for use with both R-22 and R-410A when proper metering device is used



UNCASED VERTICAL A COILS							
Part#	Model #	SEER	Nominal Ton	Piston Size R410A	Dimensions W x D x H	Refrigerant Connections	
						Suction	Liquid
642349	CM24A3G-177L-000	13	2.0	0.055	17-3/4" x 19-5/8" x 13-1/2"	3/4 OD	3/8 OD
642350	CM30A3G-177L-000	13	2.5	0.059	17-3/4" x 19-5/8" x 15-1/2"	3/4 OD	3/8 OD
642351	CM36A3G-177L-000	13	3.0	0.068	17-3/4" x 19-5/8" x 17-1/2"	3/4 OD	3/8 OD
642352	CM42A3G-177L-000	13	3.5	0.074	17-3/4" x 19-5/8" x 19-1/2"	7/8 OD	3/8 OD

Line Sets For Gibson 13 SEER Air Conditioners



UNCASED VERTICAL A COILS				
Part#	Description	Liquid	Suction	Insulation
731564	15' C x C LINESET, copper tube, for use with split system air conditioning and heat pumps	3/8"	3/4"	3/4"
731565	25' C x C LINESET, copper tube, for use with split system air conditioning and heat pumps	3/8"	3/4"	3/4"
731574	25' C x C LINESET, copper tube, for use with split system air conditioning and heat pumps	3/8"	7/8"	3/4"
731570	35' C x C LINESET, copper tube, for use with split system air conditioning and heat pumps	3/8"	3/4"	3/4"
731576	35' C x C LINESET, copper tube, for use with split system air conditioning and heat pumps	3/8"	7/8"	3/4"
731572	50' C x C LINESET, copper tube, for use with split system air conditioning and heat pumps	3/8"	3/4"	3/4"
731577	50' C x C LINESET, copper tube, for use with split system air conditioning and heat pumps	3/8"	7/8"	3/4"

Single Packaged Air Conditioners

Frigidaire - 13 SEER - 2.5 Ton Capacity



Features

- 10 year warranty on parts & compressor (registration required)
- High efficiency single stage scroll compressor
- Fixed torque energy efficient multi-speed ECM indoor blower motor
- High pressure switches for added compressor protection
- Heavy duty PSC condenser motor for long lasting reliability & quiet operation
- Corrosion resistant aluminum evaporator coil & condenser coil
- Pre-charged with R410A refrigerant
- Easy compressor & controls access
- Factory installed liquid line filter drier
- Includes two 12" duct adapters
- Can be installed on slab, roof curb or metal stand

Specifications

H22.2" x W35" x L49"

Volts: 208/240

Phase: 1

Hertz: 60

EER2: 10.6

Supply Duct Opening: 12" diameter

Return Duct Opening: 12" diameter

Frigidaire 2.5 Ton A/C Unit
13 SEER 642307
Additional sizes available

MG1E 80% AFUE Gas Furnaces



Unique Manufactured Housing Design with a robust, 20"W, fully-insulated cabinet to fit the standard MH footprint; the MG1E is our most economical, HUDcompliant gas furnace.

AC-Ready 4-Ton ECM Blower with 5-speed taps, with/without a factory-installed 20"H coil box, allowing for a field-installed 20"/26"H coil box to suit your capacity and access needs.

Quick LP Conversion with an easy-access gas valve regulator and manifold, using the factory-provided LP orifices included in the unit-literature kit.

Numerous Application Accessories save the hassle of field-fabrication, sourcing and repeat supply-house trips on new or replacement jobs.

MG1E 80% Furnaces - Short (NO Coil Cabinet)

56,000 BTU	1025401
70,000 BTU	1025403
77,000 BTU	1025405
90,000 BTU	1025407

MG1E 80% Furnaces - Tall (with Coil Cabinet)

56,000 BTU	1025402
70,000 BTU	1025404
77,000 BTU	1025406
90,000 BTU	1025408

MG1E 80% AFUE Gas Furnaces

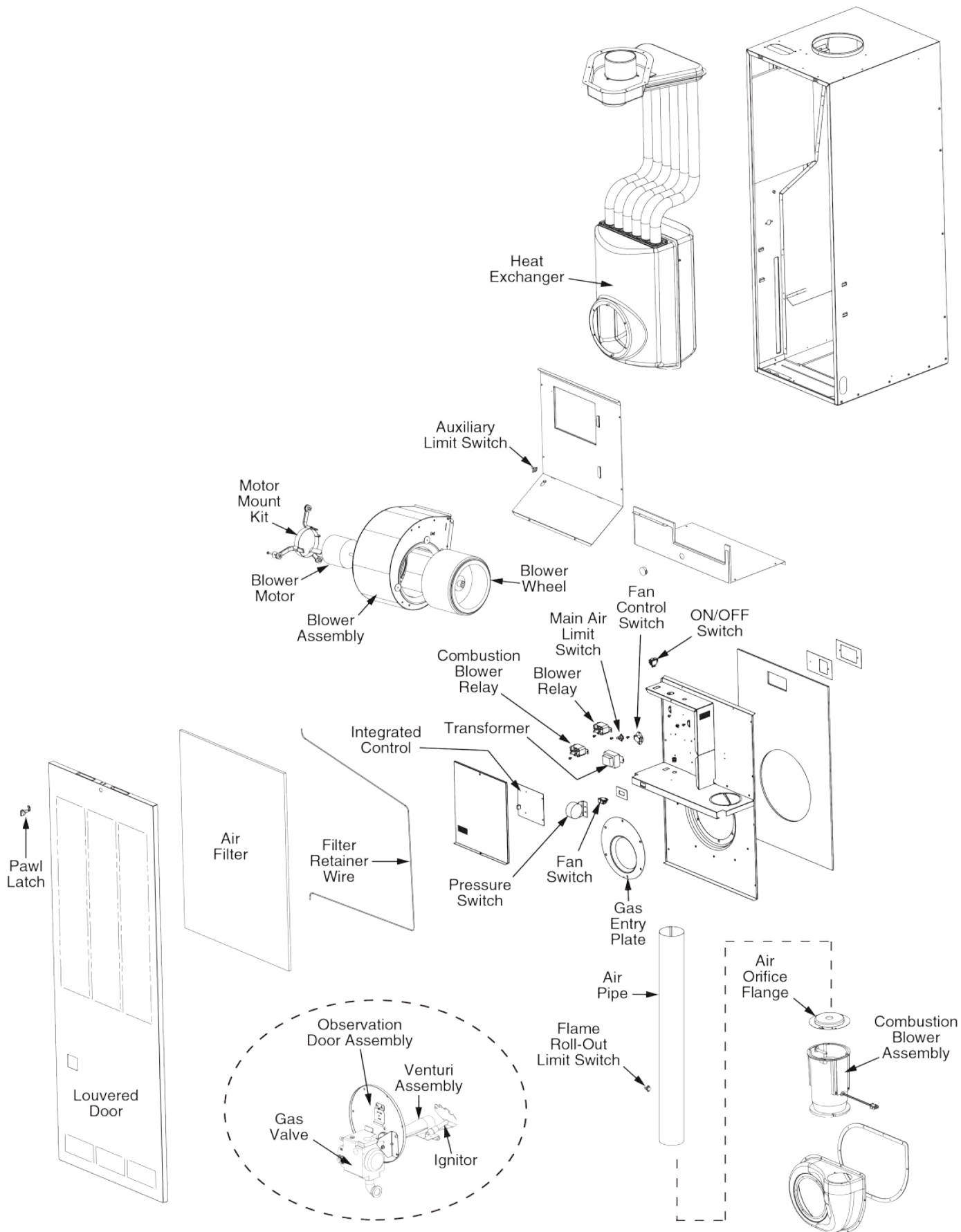
MG1E FURNACE INFORMATION **ALL WITH 4 TON AC BLOWER**										
Part#	Desc	Coil	Input	Heating Capacity	Ship L	Ship W	Ship H	Ship lbs.	Orifice	
									NG	LP
1025401	56 SHORT	No, Optional*	56 MBH	45 MBH	26½"	21 5/16"	58 1/8"	157 lbs.	29	45
1025402	56 TALL	Yes, 20"H	56 MBH	45 MBH	26½"	21 5/16"	78 1/8"	171 lbs.	29	45
1025403	70 SHORT	No, Optional*	70 MBH	57 MBH	26½"	21 5/16"	58 1/8"	157 lbs.	24	42
1025404	70 TALL	Yes, 20"H	70 MBH	57 MBH	26½"	21 5/16"	78 1/8"	171 lbs.	24	42
1025405	77 SHORT	No, Optional*	77 MBH	62 MBH	26½"	21 5/16"	58 1/8"	157 lbs.	21	40
1025406	77 TALL	Yes, 20"H	77 MBH	62 MBH	26½"	21 5/16"	78 1/8"	171 lbs.	21	40
1025407	90 SHORT	No, Optional*	85 MBH	67 MBH	26½"	21 5/16"	58 1/8"	157 lbs.	17	36
1025408	90 TALL	Yes, 20"H	85 MBH	67 MBH	26½"	21 5/16"	78 1/8"	171 lbs.	17	16



NORDYNE ROOF JACKS

High Wind Roof Cap	903656
FAW1523-0A Roof Jack	903658
FAW2135-0A Roof Jack	903659
FAW2747-0A Roof Jack	903660
SAW2135-2A Roof Jack	903662
SAW2747-2A Roof Jack	903663
SAW3653-2A Roof Jack	903664
SAW3563-4A Roof Jack	93665A
SAW5195-4A Roof Jack	903666A
SAW2747-4A Roof Jack	903678A

MG1E 80% AFUE Gas Furnaces



MG1E 80% AFUE Gas Furnaces

DESCRIPTION	MG1E			
	056	070	077	090
Air Filter	669064	669064	669064	669064
Air Orifice Flange	263871	263872	263873	263875
Air Pipe	387210R	387210R	387210R	387210R
Air Temperature Limit Switch	626470R	626618R	626618R	626618R
Auxiliary Limit Switch	626619R	626619R	626619R	626619R
Blower Housing	297217R	297217R	297217R	297217R
Blower Motor	1027351R	1027352R	1027353R	1027354R
Blower Motor Choke (Not Shown)	622340R	622340R	622340R	622340R
Blower Wheel	337258	337258	337258	337258
Burner (less Orifice)	903406	903406	903406	903406
Burner Spud (Not Shown)	663699	663699	663699	663699
Close-Off Plate (Left)	355480R	355480R	355480R	355480R
Close-Off Plate (Right)	355490R	355490R	355490R	355490R
Coil Door (White) *See Note below	903094	903094	903094	903094
Combustion Air Baffle Kit	903722	903722	903722	903722
Combustion Blower Assembly	903404	903404	903404	903404
Door Latch	668420R	668420R	668420R	668420R
Door Strike	668905R	668905R	668905R	668905R
Elbow Assembly (Not Shown)	624612	624612	624612	624612
Filter Retainer Wire	669065	669065	669065	669065
Fuse, 3 Amp (Not Shown)	632261	632261	632261	632261
Gas Entry Plate	383610	383610	383610	383610
Gas Valve (Honeywell)	903596	903596	903596	903596
Gasket Kit	730534R	730534R	730534R	730534R
Heat Exchanger	903418	903419	903419	903420
Ignitor	903110A	903110A	903110A	903110A
Integrated Control	1021575R	1021575R	1021575R	1021575R
Louvered Door (White)	903407	903407	903407	903407
Motor Mount Kit (C unit)	903489	903489	903489	903489
Orifice, LP Gas (Not Shown)	661045R	661042R	661040R	661036R
Orifice, Natural Gas (Not Shown)	661029R	661024R	661021R	661017R
Observation Door Assembly	264080	264080	264080	264080
On/Off Switch	632337R	632337R	632337R	632337R
Pawl Latch	618107R	618107R	618107R	618107R
Pressure Switch	1010775R	1010775R	1010775R	1010775R
Transformer	621807R	621807R	621807R	621807R

Please specify the correct Model No., Serial No, and part number(s) when ordering parts from the nearest authorized dealer or service center.

* For factory installed 20" coil box

Heating & Cooling Parts



STAINLESS STEEL FLEX GAS CONNECTORS

Corrosion-resistant stainless steel series gas connectors are constructed of stainless steel 304 tubing and use Easyflex's zinc-plated fittings and valves for a wide variety of residential applications.

12-inch	40-5000
24-inch	40-5003
36-inch	40-5001
48-inch	40-5002



NORDYNE M1 PRESSURE SWITCH S7

-0.20" PF SPST Pressure Switch.

Pressure Switch **1010775R**



NORDYNE M1 IGNITOR

Ignitor **1016290S**



60 AMP NON-FUSIBLE DISCONNECT

60 Amp Disconnect **155108**

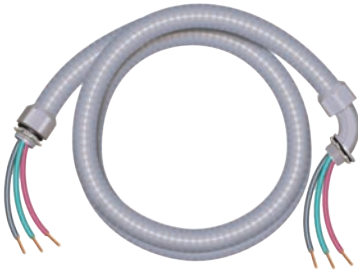


UNIVERSAL THERMOCOUPLES

18" (511841)	18-66703
24" (511842)	18-66704
30" (511843)	18-66701
36" (511844)	18-66700

ALL MAKES AND MODELS OF
HEATING AND COOLING PARTS ARE AVAILABLE

Heating & Cooling Parts



A/C WHIPS

4-foot **155109**
6-foot **155110**



NODRYNE INDUCER ORIFICES

Inducer Orifice (213945) **155314R**
Inducer Orifice (213946) **155315R**



FLEXIBLE DUCT (FLEX DUCT)

6" x 25' **16-5151**
10" x 25' **16-5160**
12" x 25' **16-5161**



NORDYNE/MILLER/INTERTHERM BLOWER MOTOR (1/5 HP 1050 RPM) (MM-304418)

1 speed motor, 115V, 1/5hp, 1050 RPM, 42Y frame, 4.0A, CCWLE rotation. 1/2" x 4" shaft. Includes angled mounting bracket. Measures 5" diameter x 4" deep.

Blower Motor **304418000**



ZIP TIES

48" Zip Ties **16-5163P**



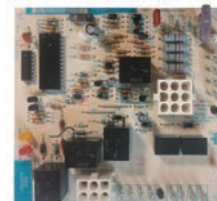
US MOTORS 1/3 HP 208-230V RESCUE CONDENSER FAN MOTOR 1075RPM

Fan Motor **585558**



DUCT BOARD

Fiberglass insulation material. 4" x 10"
4 x 10 Duct Board **10-1920**



MILLER INTEGRATED FURNACE CONTROL BOARD

Control Board **1021575R**

Heating & Cooling Parts



**THERMOSTAT
WIRE DIGITAL PROGRAMMABLE**
(661956) 1F78-144 **18-61664**

THERMOSTAT - HEAT ONLY
(3351390) **18-6700**

**THERMOSTAT
HEATING & COOLING**
(3351391) **18-6701**

**THERMOSTAT
NON-PROGRAMMABLE**
(3351468) **18-6704**



METAL FLOOR REGISTERS

2" x 10" Brown	35-10091B
2" x 10" White	35-10091W
2" x 12" Brown	35-10092B
2" x 12" White	35-10092W
2" x 14" Brown	35-10093B
2" x 14" White	35-10093W
4" x 8" Brown	35-10095
4" x 8" White	35-10094
4" x 10" Brown	35-10096
4" x 10" White	35-10098
4" x 12" Brown	35-10097
4" x 12" White	35-10099



FLOOR REGISTER COLLARS
4" x 8" x 6" **35-1010**
4" x 10" x 6" **35-1011**



BASEBOARD DIFFUSERS

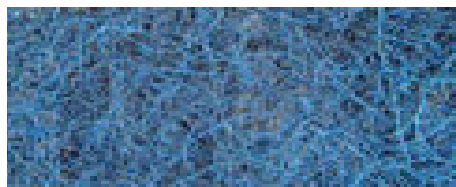
15" Brown	35-1009B
15" White	35-1009W
18" Brown	35-1010B
18" White	35-1010W

Furnace & A/C Filters



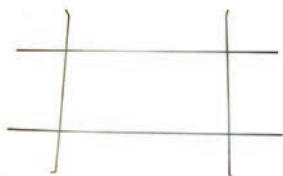
FOAM FILTERS

16" x 26" For (CMF) **300964000**
 24" x 25" Foam Filter Roll **19-8081**
 19" x 36" For 7600 & 7900 Coleman **21-1011**
 19" x 54" For Nordyne MGH **19-8083**



PARATEX AIR FILTERS / HOGHAIR

16" x 20" x 1" **19-8085**
 20" x 22" x 1" **29-2022**
 for M3, M7 & RG7 **16-4505**
 24" x 25' x 1" Roll **668780**
 14" x 20" x 1" **669064**
 for MM & MG Series
 19 1/2" x 28 1/2" x 1" **669064**
 for M1 & RG1 Series



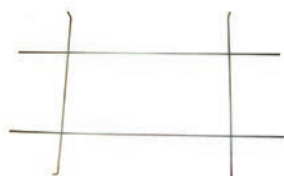
FILTER KITS

For Coleman 7600 & 7900 **21-1010**
 For Nordyne MGH **19-8082**

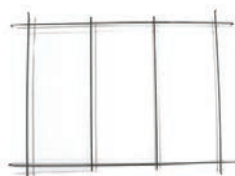


FIBERGLASS DISPOSABLE FILTERS

16" x 20" x 1" **29-1620**
 16" x 25" x 1" **19-1625**



(A)



(B)



(C)

RETAINERS

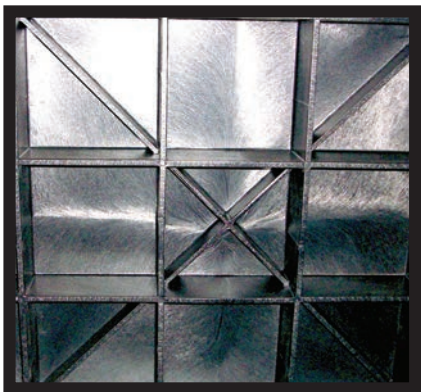
(A) For Coleman 7600 & 7900 **29-1005**
 (B) For Nordyne MGH **29-1009**
 (C) For Nordyne M-1 RG-1 **669065**

Furnace Parts



NORDYNE ROOF JACKS

High Wind Roof Cap	903656
FAW1523-0A Roof Jack	903658
FAW2135-0A Roof Jack	903659
FAW2747-0A Roof Jack	903660
SAW2135-2A Roof Jack	903662
SAW2747-2A Roof Jack	903663
SAW3653-2A Roof Jack	903664
SAW3563-4A Roof Jack	93665A
SAW5195-4A Roof Jack	903666A
SAW2747-4A Roof Jack	903678A



A/C PADS

30" x 30" x 3" **650643**



FOIL TAPE

2" x 50 YARDS

60-7037F



FURNACE DOORS

20" x 78" White Vented

65-2078

22" x 78" White Vented

65-2278

Plumbing Misc. Parts & Accessories



SPRAY ADHESIVE
APC # 79 12 oz can **60-7034**



PLASTIC SLIP NUT
1 1/2" **50-3001**



ANTIFREEZE
-50°, 1 gallon **40-3037**



**RATCHET TOOL
FOR OETIKER RINGS**
iPlumb 18041 Metal
Ratchet Stainless Steel
Clamp Pex Crimper 0.5"
Ratchet Tool **50-2390**



ACCESS PANELS
Made of durable ABS and can
be installed easily before or after
wallboard installation. Can be
painted or wallpapered. No glue
or adhesive needed.
6" x 9" **10-2011**
14" x 14" **10-2010**



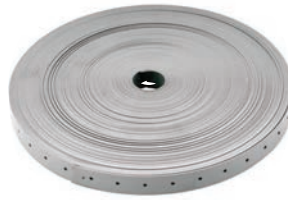
PVC SINK TAILPIECE
1 1/2" x 6" **50-3000**

Plumbing Misc. Parts & Accessories



HANGER IRON

3/4" x 10' **50-43030**
 3/4" x 25' **50-43031**
 3/4" x 50' **50-43032**
 3/4" x 100' **50-43033**



PVC HANGER STRAP

3/4" x 100' **50-43034**



HANGER IRON BOLTS

1/4" Bolts - 100 pcs. **50-4303B**



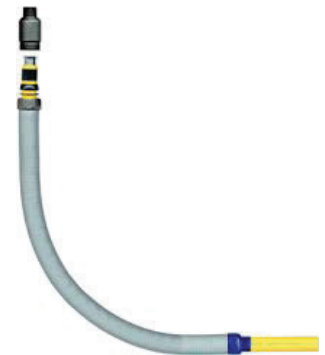
NUT FOR IRON BOLTS

1/4" Nuts - 100 pcs. **50-4303N**



FROST-FREE SILLCOCK

8" **50-4450**
 10" **50-4451**
 12" **50-4452**



FLEX GAS CONNECTION

36" X-Riser 1" CTS x 1" MPT
50-6025



YELLOW GAS PIPE

1" CTS x 150' **50-6025Y1**



LOW PRESSURE GAS GAUGE

0-30 PSI 2" **51-1008**



YELLOW TRACER WIRE

14 Gauge **50-TRACER**

Flex Mend



FLEX MEND ROLLS

Flex Mend - No Adhesive

- 14" x 4' **60-1404**
- 14" x 70' **60-1470**
- 16" x 80' **60-1680**
- 30" x 100' **60-2855**

Flex Mend - With Adhesive

- 28" x 25' **60-2825**
- 28" x 50' **60-2850**



FLEX MEND SHEET

Fixes holes and rips, without adhesive

- 48" x 14' **60-2845**



FLEX MEND TAPE

Underbelly repair tape

- 2" x 180' **60-200T**
- 4" x 180' **60-400T**
- 6" x 180' **60-600T**



SPRAY ADHESIVE

- APC # 79 12 oz can **60-7034**



FLEX MEND REPAIR KIT

Contains 28" x 54" (10 sq. ft.) Flex Mend and 28" x 108" (20 sq. ft.) bottom board material

- 48" x 14' **60-2845**

Roll of Rubber



GREY RUBBER ROLL

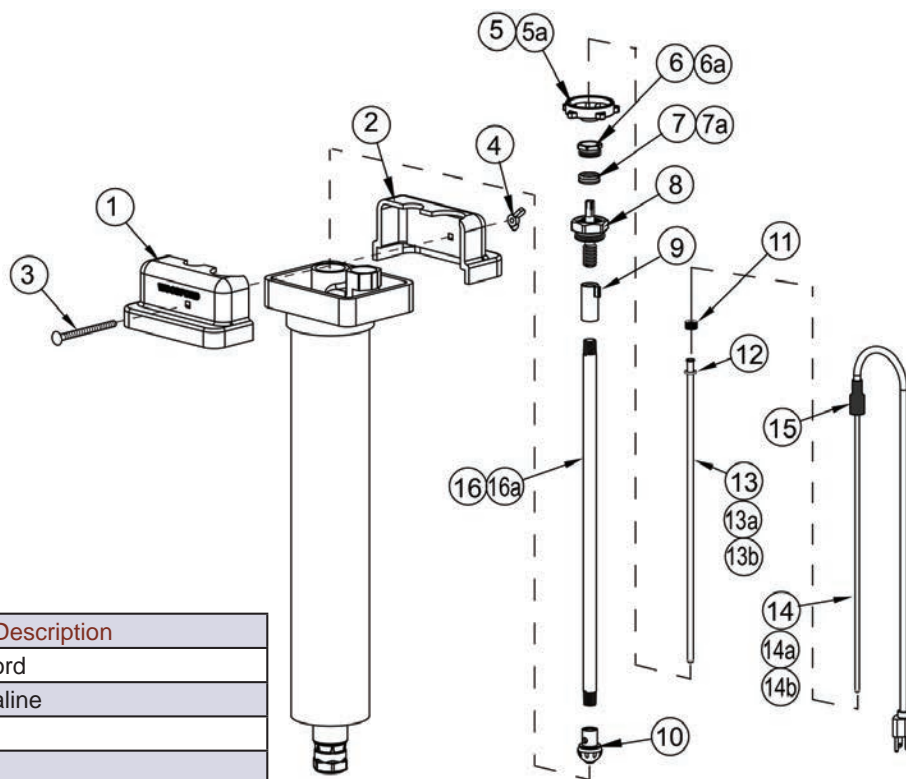
Used for brick skirting.

- 6" x 100' **60-1000**

Thermaline

The Thermaline® is a compact unit especially designed to provide water service to mobile homes. It is ideal wherever a freezeless sanitary tight line installation is needed.

The parts we have available are **indicated in bold red**. We may be able to special order any other parts on the list you need.



Item	Part Number	Description
1	80055	Cover, Woodford
2	80056	Cover, Thermaline
3	80073	Carriage Bolt
4	80068	Wing Nut
5	80014	Handle (Brass) NEW
*5a	80013	Handle (Brass) (For units sold before 6/1/2011)
6	80017	Packing Nut
*6a	80005	Packing Nut (For units sold before 6/1/2011)
7	30247	Packing
*7a	80008	Packing (For units sold before 6/1/2011)
8	85064	Head Nut Assembly
9	80066	Yoke Nut
10	85015	Combination Valve Assembly
**11	80062	Heater Well Thumb Nut
12	80063	Heater Well Washer
**13	85001	1' Heater Well Assembly (Includes Item 12) Standard on 1' - 2' Hydrants
**13a	85002	2' Heater Well Assembly (Includes Item 12) Standard on 3' - 6' Hydrants
**13b	85004	4' Heater Well Assembly (Includes Item 12) Optional on 6' hydrants and standard on 7'-8' hydrants
**14	85061	1' Heater Assembly (Includes Item 15) Standard on 1' - 2' Hydrants
**14a	85062	2' Heater Assembly (Includes Item 15) Standard on 3' - 6' Hydrants
**14b	85065	4' Heater Assembly (Includes Item 15) Optional on 6' hydrants and standard on 7'-8' hydrants
15	80061	Heater Cover
	RK-THERM	Repair Kit (Includes Items 5-12)

Item	Part Number	Description
OPERATING PIPE (For Brass Head)		
16	80081	1' Bury (11-1/8" long)
	80082	2' Bury (23-1/8" long)
	80083	3' Bury (35-1/8" long)
	80084	4' Bury (47-1/8" long)
	80085	5' Bury (59-1/8" long)
	80086	6' Bury (71-1/8" long)
	80087	7' Bury (83-1/8" long)
	80088	8' Bury (95-1/8" long)
OPERATING PIPE (For Cast Iron Head)		
16a	80031	1' Bury (9-3/8" long)
	80032	2' Bury (21-3/8" long)
	80033	3' Bury (33-3/8" long)
	80034	4' Bury (45-3/8" long)
	80035	5' Bury (57-3/8" long)
	80036	6' Bury (69-3/8" long)
	80037	7' Bury (81-3/8" long)

NOTES:

* Parts 5a, 6a & 7a cannot be used with 85064 Head Nut Assembly.

** Old style heaters originally used in Thermalines with cast iron covers are replaced by items 11, 13 and 14.

4' THERMALINE

4 foot

8004FT

Sharkbite Push-to-Connect Fittings

For use with Pex, Poly, CPVC and Copper piping



COUPLINGS

Push-It Fittings

1/2" x 1/2" **38-004**

3/4" x 3/4" **38-005**

3/4" x 1/2" **38-023**



90° ELBOWS

Push-It Fittings

1/2" **38-304**

3/4" **38-305**



90° REDUCING ELBOWS

Push-It Fittings

3/4" x 1/2" **38-323**



90° ELBOWS MPT

Push-It Fittings

1/2" x 1/2" **38-364**

3/4" x 3/4" **38-365**



90° ELBOWS FPT

Push-It Fittings

1/2" x 1/2" **38-384**

3/4" x 3/4" **38-385**



90° DROP EAR ELBOWS FPT

Push-It Fittings

1/2" x 1/2" **38-399**



TEES

Push-It Fittings

1/2" x 1/2" x 1/2" **38-404**

3/4" x 3/4" x 3/4" **38-405**

1/2" x 1/2" x 3/4" **38-420**

3/4" x 3/4" x 1/2" **38-429**

3/4" x 1/2" x 3/4" **38-430**

3/4" x 1/2" x 1/2" **38-431**



BALL VALVES

Push-It Fittings

1/2" **38-604**

3/4" **38-605**



FEMALE ADAPTERS

Push-It Fittings

1/2" x 1/2" **38-704**

3/4" x 3/4" **38-705**

1/2" x 3/4" **38-717**



MALE ADAPTERS

Push-It Fittings

1/2" x 1/2" **38-804**

3/4" x 3/4" **38-805**

1/2" x 3/4" **38-817**

Flair-It Fittings

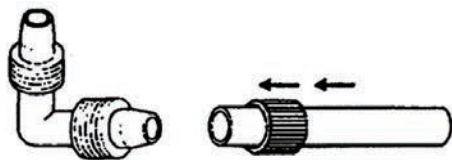
For use with Pex & Poly Piping

FLAIR-IT FITTINGS

Flair-It is a plumbing system for polybutylene pipe and PEX Tubing, designed for normal hot & cold potable water applications. Extremely simple to install. Fittings are reusable. There is no corrosion or scaling and they have a high resistance to cold temperatures.

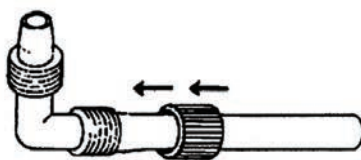
FLARED - CONE & NUT FITTINGS

- Designed for normal hot & cold potable water
- Reusable fittings - no corrosion or scaling
- Simple installation. No crimping tools, cements, solder or teflon tape needed
- Complies with ASTMD 3309 & NSF listed (standard 14)
- For Manufactured Housing & Rec. Vehicles



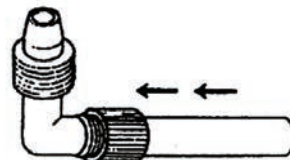
STEP 1

Slide nut over tubing



STEP 2

Firmly press tubing onto the flare of the fitting until the tubing rests against the fittings threads.



STEP 3

Slide the nut to the threads and tighten securely onto the fitting.



ELBOWS

1/2" x 1/2"
3/4" x 3/4"

50-2800
50-2900



FEMALE ELBOWS

1/2" x 1/2"
3/4" x 3/4"

50-2802
50-2914



MALE ELBOWS

1/2" x 1/2"
3/4" x 3/4"

50-2803
50-2901



FEMALE SWIVEL ELBOWS

1/2" x 1/2"
3/4" x 3/4"

50-2804
50-2833



TEES

1/2" x 1/2" x 1/2"
3/4" x 3/4" x 3/4"

50-2820
50-2906



COUPLINGS

1/2" x 1/2"
3/8" x 3/8"
3/4" x 3/4"
3/4" x 1/2"

50-2840
50-2855
50-2908
50-3912



FEMALE ADAPTERS

1/2" x 1/2"
3/4" x 3/4"

50-2841
50-2909



MALE ADAPTERS

1/2" x 1/2"
3/4" x 3/4"

50-2842
50-2910



SWIVEL COUPLINGS

1/2" x 1/2"
3/4" x 3/4"

50-2843
50-2849

Flair-It Fittings



REDUCING COUPLINGS

1/2" x 3/8"

50-2853

3/4" x 1/2"

50-2912



BALLCOCK ADAPTERS

1/2" x 7/8"

50-2865

3/8" x 7/8"

50-2869



STOP VALVES

3/8" x 3/8"

50-2879

1/2" x 1/2"

50-2880



FLAIR-IT PEX TO POLY ADAPTER

3/4"

50-2892



REDUCING TEES

3/4" x 1/2" x 1/2"

50-2903

3/4" x 1/2" x 3/4"

50-2904



WASHING MACHINE VALVE

1/2" x 3/4"

50-2915



REDUCING ELBOWS

3/4" x 1/2"

50-2917



DROP EAR ELBOW

1/2" Pex x 1/2"

50-2801



PEX TO POLY COUPLING

3/4" Poly x 3/4" PEX 50-2913

PVC Fittings

PVC-DWV FITTINGS

Schedule 40 - NSF approved for DWV applications. Meets the requirements of ASTM D2665. For use with PVC-DWV pipe. Sizes are expressed in inches of pipe size. Hub (H) signifies large, non-threaded opening in fitting - pipe slips into this opening. Spigot (Sp) signifies smaller, non-threaded opening in fitting - this slips into the hub opening of another fitting. Threaded openings are described as male pipe thread (MPT) or female pipe thread (FPT).



PVC PIPE

Schedule 40 - NSF approved for DWV applications. Meets the requirements of ASTM D2665. All pipe 10 feet in length.

2" x 10' **50-3002**
3" x 10' Foam Core DWV **50-3003**



COUPLINGS

1 1/2" x 1 1/2" **50-3011**
2" x 2" **50-3012**
3" x 3" **50-3013**



45° ELBOWS

1 1/2" x 1 1/2" **50-30241**
3" x 3" **50-3026**



45° STREET ELBOWS

1 1/2" x 1 1/2" **50-3015**
2" x 2" **50-3025A**
3" x 3" **50-3026A**



22° ELBOWS

1 1/2" x 1 1/2" **50-3022**
2" x 2" **50-3023**
3" x 3" **50-3024**



22° STREET ELBOWS

1 1/2" x 1 1/2" **50-3022A**
2" x 2" **50-3023A**
3" x 3" **50-3024A**



90° ELBOWS

1 1/2" x 1 1/2" **50-3031**
2" x 2" **50-3032**
3" x 3" **50-3033**



90° STREET ELBOWS

3" x 3" **50-3033A**



90° LONG SWEEP ELBOWS

3" x 3" **50-3033L**

PVC Fittings



90° SHORT ELBOWS
3" x 3" **50-3033S**



CLEAN OUT ADAPTERS
3" **50-3037**



THREADED PLUGS
3" **50-3040**



SANITARY TEE
3" x 3" x 3" **50-3043**



DOUBLE SANITARY TEE
3" x 3" x 3" x 3" **50-3043A**



MALE ADAPTERS
3" x 3" **50-3048**



LONG TURN TEE WYE
3" x 3" x 3" **50-3057**



45° WYE
3" x 3" x 3" **50-3059**



45° DOUBLE WYE
3" x 3" x 3" x 3" **50-3059D**



REDUCING BUSHING
3" x 2"
3" x 1 1/2" **50-3082**
50-3083



DOUBLE ELBOW
3" x 3" x 3" **50-3085**



FEMALE ADAPTERS
3" x 3" **50-3054**



DOUBLE LONG TURN TEE WYE
3" x 3" x 3" x 3" **50-3091D**



PVC CEMENT
1/4 Pint **50-4232**
1/2 Pint **50-4233**
1 Pint **50-4234**
1 Quart **50-4235**



PVC REDUCING BUSHING
3" x 1 1/2" **50-3083**
3" x 2" **50-3082**

ABS Fittings

ABS-DWV FITTINGS

Schedule 40 - NSF approved for DWV applications. Meets the requirements of ASTM D2661. For use with ABS-DWV pipe. Sizes are expressed in inches of pipe size. Hib (H) signifies large, non-threaded opening in fitting - pipe slips into this opening. Spigot (Sp) signifies smaller, non-threaded openings in fitting - this slips into the hub opening of another fitting. Threaded openings are described as male pipe thread (MPT) or female pipe thread (FPT).



ABS PIPE
 1 1/2" x 10' **50-4039**
 1 1/2" x the foot **50-4039F**
 3" x 10' S.O. Only **50-4037**



FLEXIBLE COUPLINGS
 1 1/2" x 1 1/2" **50-345000**
 2" x 2" **50-34501**
 3" x 3" **50-34502**
 4" x 4" **50-34503**
 3" x 4" **50-34504**
 2" x 1 1/2" **50-34506**



SOIL RISER DONUTS
 3" x Soil Riser **50-34505**



SEWER PLUGS
 Fits both cast iron and plastic pipe.
 4" Sewer Plug **50-4019**



COUPLINGS
 1 1/2" x 1 1/2" **50-4041**
 2" x 2" **50-4042**
 3" x 3" **50-4043**



REDUCING BUSHINGS
 2" x 1 1/2" **50-4045**
 3" x 1 1/2" **50-4046**
 3" x 2" **50-4047**



REDUCING COUPLINGS
 3" x 2" **50-4047RC**



CLEAN OUT ADAPTERS
 1 1/2" **50-4049**
 3" **50-4051**



CLEAN OUT PLUGS
 1 1/2" **50-4049P**
 3" **50-4051P**



ABS CEMENT
 1/4 Pint **50-4052**
 1 Quart **50-4055**



TRAY PLUG SWIVEL ADAPTERS
 1 1/2" **50-4013**



TRAY PLUG ADAPTERS
 1 1/2" **50-4105**

ABS Fittings



FEMALE ADAPTERS
1 1/2" 50-4059
3" 50-4061



MALE ADAPTERS
1 1/2" 50-4063
3" 50-40652



90° STREET ELBOW
1 1/2" 50-4072
3" 50-4074



90° LONG SWEEP ELBOWS
1 1/2" 50-4078
3" 50-4080



DOUBLE ELBOWS
3" 50-4082



45° ELBOWS
1 1/2" 50-4083
3" 50-4085



45° STREET ELBOWS
1 1/2" 50-40853
3" 50-40855



22 1/2° ELBOWS
1 1/2" 50-4086
3" 50-4088



22 1/2° STREET ELBOWS
1 1/2" 50-40861
3" 50-4088A



45° WYE
1 1/2" 50-4089
3" 50-4091



LONG TURN WYE
3" 50-4091C



DOUBLE LONG TURN WYE
3" 50-4091D



SANITARY TEES
1 1/2" 50-4092
3" 50-4094



45° DOUBLE WYE
3" 50-4099



DOUBLE SANITARY TEES
3" 50-41003

Brass Fittings

Brass fittings are for use with copper tubing. Sizes are expressed in inches of copper tubing outside diameter (OD) and inches of male or female pipe thread (MPT, FPT).



COPPER TUBING

5/8" x 50'

50-4121

3/4" x 50'

50-41216



BRASS FLARE NUT SHORT

Used for gas

5/8"

50-4125

3/4"

50-41254



BRASS FLARE NUT LONG

Used for water

5/8"

50-4125F

3/4"

50-41254F



FEMALE BRASS ADAPTER

5/8" FL x 3/4" FPT 50-4152

3/4" FL x 3/4" FPT 50-4330



MALE BRASS ADAPTER

1/2" FL x 1/2" MPT 50-4158

5/8" FL x 3/4" MPT 50-4161

3/4" FL x 3/4" MPT 50-4225



MALE BRASS ELBOW

3/4" FL x 3/4" MPT 50-4226



GAS BALL VALVE

1/2"

50-5000

3/4"

50-5001

1"

50-5011



BALL VALVE

3/4"

50-5001BV

1"

50-50011BV



LEAD-FREE GATE VALVE

3/4"

50-4302LF

Black & Galvanized Fittings

Malleable fitting plumbing system for Galvanized and Black Pipe. Galvanized used extensively for fresh water hook-up and Black for gas lines. Fittings are reusable. Sizes are expressed in inches of standard pipe thread unless otherwise indicated.



BLACK PIPE
3/4" x 10' 50-6002
1" x 10' 50-6004



GALVANIZED 90° ELBOWS
3/4" x 3/4" 50-4284



BLACK CAPS
1/2" 50-43003B
3/4" 50-43008B
1" 50-43010B



BLACK COUPLINGS
1/2" x 1/2" 50-4294
3/4" x 3/4" 50-4295B
1" x 1" 50-42667B



GALVANIZED COUPLINGS
3/4" x 3/4" 50-4295G



BLACK 90° ELBOWS
1/2" x 1/2" 50-4283B
3/4" x 3/4" 50-4284B
3/4" x 1" 50-5280B
(Reducing)



BLACK REDUCING COUPLINGS
3/4" x 1/2" 50-4285B
3/4" x 1" 50-4286B



NIPPLES

3/4" BLACK
3/4" x Close 50-42640B
3/4" x 3" 50-42645B
3/4" x 4" 50-42647
3/4" x 5" 50-42679B
3/4" x 6" 50-42651B

1" BLACK
1" x Close 50-42539B
1" x 2" 50-42660B
1" x 4" 50-42661B
1" x 5" 50-42665B
1" x 6" 50-42662B
1" x 8" 50-42663B
1" x 10" 50-42664B
1" x 12" 50-426612B

3/4" GALVANIZED
3/4" x Close 50-42639G
3/4" x 6" 50-42651G



BLACK TEES
1/2" 50-4281
3/4" 50-4282B
1" 50-42821B



BLACK 90° STREET ELBOWS
1/2" 50-4287B
3/4" 50-4288B
1" 50-42668B



BLACK REDUCING TEES
1" x 3/4" x 1" 50-42811B



BLACK UNIONS
1/2" x 1/2" 50-4291B
3/4" x 3/4" 50-4292B
1" x 1" 50-42669B

PEX Fittings

A practical hot/cold pressure plumbing system for every kind of job. This system was developed to meet the needs of plumbing professionals and is extremely efficient. The tubing is flexible at all temperatures and can be installed in long lengths with minimal use of joints and elbows. Other advantages include: Corrosion resistant ~ Freeze damage tolerant ~ No exotic parts to fail ~ No solvents ~ Quicker, easier connections ~ Low heat conductivity ~ Elimination of most water hammer conditions. PEX can handle all normal temperatures and pressures for residential portable water systems. Easier to lay out and rough in both winter and summer. PEX is resistant to mineral build up, rust and electrolysis. The piping can be connected to galvanized, copper, polybutylene, and CPVC systems with the standard fittings. PEX should not be used in the following instances: Where exposed to or stored in direct sunlight ~ In continuously circulating hot water plumbing loops ~ Air conditioning systems with refrigerant.



FEMALE ADAPTERS

- 1/2" x 1/2" FPT **50-5151**
- 1/2" x 3/4" FPT **50-5252**
- 3/4" x 3/4" FPT **50-5253**



MALE ADAPTERS

- 1/2" x 1/2" MPT **50-5255**
- 3/4" x 1/2" MPT **50-5256**
- 3/4" x 3/4" MPT **50-5257**
- 1/2" x 3/4" MPT **50-5258**



TEES

- 1/2" x 1/2" x 1/2" **50-5232**
- 3/4" x 3/4" x 3/4" **50-5233**
- 3/4" x 3/4" x 1/2" **50-5234**
- 3/4" x 1/2" x 1/2" **50-5274**
- 3/4" x 1/2" x 3/4" **50-5275**
- 1/2" x 1/2" x 3/4" **50-5276**



ELBOWS

- 1/2" x 1/2" **50-5236**
- 3/4" x 1/2" **50-5237**
- 3/4" x 3/4" **50-5238**



COUPLINGS

- 1/2" x 1/2" **50-5240**
- 3/4" x 1/2" (Reducing) **50-5241**
- 3/4" x 3/4" **50-5242**
- 1/2" Pex x 1/2" Poly **50-5243**



FEMALE SWIVEL ADAPTERS

- 3/4" P x 3/4" FPT **50-5250**



PEX SHUTOFF VALVES LONG HANDLE

- 1/2" x 1/2" **50-5249**
- 3/4" x 3/4" **50-5261**



WASHER VALVES

- Blue **50-5262B**
- Red **50-5262R**



PEX SHUTOFF VALVES T HANDLE

- 1/2" x 1/2" **50-5249TH**
- 3/4" x 3/4" **50-5261TH**

PEX Fittings



CHROME SHUTOFF VALVES
1/2" x 1/2" **50-5249C**



COMPRESSION SHUTOFF VALVES
1/2" P x 3/8" Comp. **50-5263**



FAUCET CONNECTION
1/2" PEX Swivel **50-5266**



PLUGS
1/2" **50-5259**
3/4" **50-5260**



MALE ELBOWS
3/4" P x 3/4" MPT **50-5253EL**



FEMALE SWIVEL ELBOWS
1/2" P x 1/2" FPT **50-5254**



DROP EAR ELBOWS
1/2" P x 1/2" FPT **50-5268**



OETIKER RINGS (CLAMPS)
1/2" POLY **50-5168**
3/4" POLY **50-5169**
1/2" PEX **50-5168P**
3/4" PEX **50-5168P**



ICE MAKER TEE
1/2" **50-5216**



RINGS
1/2" x 1/2" **50-5229**
3/4" x 3/4" **50-5230**



CLOSET CONNECTION
1/2" **50-5272**



PEX TO POLY COUPLING
1/2" x 1/2" **50-5243**
3/4" x 3/4" **50-4244**

PEX Pipe & Tubing



PEX PIPE

- White - 1/2" x 20' 50-5244
- White - 3/4" x 20' 50-4245
- White - 1/2" x 100' 50-5246
- White - 3/4" x 100' 50-5247
- Blue - 1/2" x 20' 50-5244B
- Blue - 3/4" x 20' 50-4245B
- Red - 1/2" x 20' 50-5244R
- Red - 3/4" x 20' 50-4245R



PEX TUBING

- Blue - 1/2" x 100' 50-5246B
- Blue - 3/4" x 100' 50-4245BR
- Red - 1/2" x 100' 50-5246R
- Red - 3/4" x 100' 50-4245RR
- All Special Order



PLASTIC TUBING CUTTER

- Tubing Cutter 50-5026



QUICK CLAMP

- Works on all stainless rings
- Quick Clamp 50-5290P

Cement & Tape



ABS CEMENT

- 1/4 Pint 50-4052
- 1 Quart 50-4055



PVC CEMENT

- 1/4 Pint 50-4232
- 1/2 Pint 50-4233
- 1 Pint 50-4234
- 1 Quart 50-4235



PURPLE PRIMER

- 1 Pint 50-4433
- 1 Quart 50-4434



WEATHERPROOF PVC CEMENT

- 1 Quart 50-4602



PIPE THREAD SEALANT

- 1/2 Pint 60-7002
- 1 Pint 60-7003



TEFLON TAPE

- 1/4" x 520" 60-7017

Water Heaters

Reliance[®] Water Heaters

Your neighborhood water heater source.



Sealed Combustion Convertible Gas (Direct Vent)

6-year limited tank & parts warranty, 1-year labor warranty. Meets HUD requirements for manufactured housing. Side taps for easy installation. Available in 30, 40 and 50 gallon capacities.

Model #	Part #	Gallon Capacity	Jacket Diameter	Height to top of heater
6 30 MDV	25-7016S	30	18	58
6 40 MDV	25-7018S	40	20	58.75
6 50 MDV	25-7042S	50	22	57

Electric



Factory-installed temperature and pressure (T and P) relief valve. Meets HUD requirements for manufactured housing. Inlet and outlet connections on side for easier installation in mobile homes.

Model #	Part #	Gallon Capacity	Jacket Diameter	Height to top of heater
6 20 SOMS K	25-7024S	19	18	25
MHNE3F30HD	25-7031S	30	19	46.75
MHKE3F40RD	25-7034S	40	22	50



Standard Atmospheric Gas

6-year limited tank & parts warranty, 1-year labor warranty. Meets HUD requirements for manufactured housing. Not for use in inside closets where a direct vent design is required. Available in 30 and 40 gallon capacities.

Model #	Part #	Gallon Capacity	Jacket Diameter	Height to top of heater
6 30 NOMT	25-7040S	30	18	60
6 40 NOMT	25-7041S	40	20	62

Water Heater Parts



Roof Jack



High Wind Cap



Extension Pipe



WATER HEATER AIR INLETS

For use with sealed combustion or gas water heaters.

24" Air Inlet 25-1008

ROOF JACKS

- 12" Roof Stack for MHV **25-7019**
- 12" - 30" Roof Stack for MHV **25-7019L**
- 18" - 32" Adjustable for MHDV **25-1004**
- 32" - 60" Adjustable for MHDV **25-1005**
- 36" - 95" Adjustable for MHDV **25-1006**
- 12" Non-Adjustable for MHDV **25-1007**
- High Wind Cap **25-6693**
- 18" Extension Pipe **25-1015**



SCREW-IN ELEMENTS

Contains one element & one gasket.

- 1500W / 120V **25-7048**
- 2000W / 120V **25-70482**
- 3500W / 240V **25-7050**
- 4500W / 240V **25-7051**



REPLACEMENT GAS VALVES

Convertible / natural.

Gas Valve 25-1009



FLEX WATER CONNECTORS (STAINLESS STEEL)

- 18" L 3/4" FPT x FPT **50-6022**
- 18 3/4" FPT x Push **50-6022P**
- 18 3/4" x 3/4" PEX **50-6022PEX**
- 24" L 3/4" FPT x FPT **50-6024**
- 24 3/4" FPT x Push **50-6024P**
- 24 3/4" x 3/4" PEX **50-6024PEX**



PRESSURE RELIEF VALVES

1 3/4" Long 25-7064



PVC WATER HEATER OVERFLOW DRAIN LINE

3/4" x 63" 25-1003

Water Heater Parts



WATER HEATER DOORS

22" x 60" Non-Vented	71-2253W
22" x 60" Vented	71-2253WV
23" x 60" Non-Vented	71-2251W
23" x 60" Vented	71-2251WV



STAINLESS STEEL FLEX GAS CONNECTORS

Corrosion-resistant stainless steel series gas connectors are constructed of stainless steel 304 tubing and use Easyflex's zinc-plated fittings and valves for a wide variety of residential applications.

12-inch	40-5000
24-inch	40-5003
36-inch	40-5002
48-inch	40-5001

Dishwashers

Hotpoint®

Key Features of Hotpoint Dishwashers

- Piranha™ hard food disposer grinds food into small particles that are washed away
- Hot Start option provides optimal water temperature for dependable performance
- 64 dBA Motor runs quietly to keep kitchen peaceful
- Water saver cycle for quickly washing loads of everyday dishes or a quick load of glasses
- Heavy wash for heavily soiled dishes and cookware
- 5 cycles / 2 options allows you to select the combination that best fits your dish load
- Up to 12-place setting capacity racking provides flexibility to wash a variety of dishes at once



Black 24"

12-0001B



DISHWASHER HOOKUP
3/4" FPT x 3/4" Comp 12-0002



DISHWASHER CONNECTOR
48" Stainless Steel 12-0003



White 24"

12-0001W

Washers & Dryers

Hotpoint®

Key Features of Hotpoint Washers

- Stainless steel basket - long-lasting stainless steel finish resists rust and won't chip, peel or snag clothes
- Heavy-duty agitator - powerful wash action rotates your laundry for a thorough clean every time
- Load size - select your preferred load size for the desired water level



White Washers

15-5001W

Key Features of Hotpoint Electric Dryers

- Auto dry - for clothes that come out feeling and looking great, this setting monitors air temperature to set the optimal drying time
- Up to 120 ft venting capability - provides flexible installation
- Aluminized alloy drum - improves energy efficiency and resists corrosion



White Electric Dryers

15-5002WW

Key Features of Hotpoint Gas Dryers

- Aluminized Alloy Drum improves energy efficiency and resists corrosion
- Reversible Door opening can be reversed to meet laundry room needs
- End-of-Cycle Signal alerts you when the load is done
- Up to 120 ft. venting capability
- 3 Heat Settings
- Side Swing Door
- Upfront Lint Filter



White Gas Dryers

15-5002W

Refrigerators

Hotpoint®

Key Features of Hotpoint Refrigerators

- LED lighting - find all your favorite foods under natural-looking light
- Pocket handles - a streamlined design offers a clean appearance
- Adjustable wire shelves - moveable racks can handle a variety of foods



Black Refrigerator 17.5 cu. ft.
15-5003B



White Refrigerator 17.5 cu. ft.
15-5003W

Ranges

Hotpoint®

Key Features of Hotpoint Gas Ranges

- Standard clean oven- Smooth surface and rounded corners make clean-up quick and easy
- 4.8 cu. ft. oven capacity- Enough room to cook an entire meal at once
- Sealed cooktop burners- Contains spills and make cleaning quick and easy
- Porcelain upswept cooktop- Raised edges contain spills, while the surface is easy to wipe clean
- Heavy steel grates- High-grade steel grates offer dependable, long-lasting performance
- Two oven racks- Durable to securely hold any cookware
- One-piece durable handle- Strong and long-lasting
- Large window- Easily look inside to monitor food as it's cooking
- Approx. Dimensions: 46 7/8 H x 30 W x 28 3/4 D
- Limited 1-year entire appliance warranty



Black Gas Range 30" 15-5004BC



White Gas Range 30" 15-5004WC



Black Electric Range 30" 15-5005B



White Electric Range 30" 15-5005W

Key Features of Hotpoint Electric Ranges

- Standard clean oven - Smooth surface makes cleaning by hand easier
- Sensi-temp technology - Enjoy the same cooking power as a traditional coil with an added safety feature that meets the new UL858 Household Electric Ranges Standard for Safety
- Electronic clock and timer help cooks coordinate meal preparation and cooking
- Standard window - Provides a convenient viewing area to check the progress of food
- Porcelain upswept cooktop - Raised edges contain spills, while the surface is easy to wipe clean
- Chrome drop bowls - Contain spills and remove for easy cleaning
- Two oven racks - Feature a durable construction to help accommodate any size or type of cookware
- 5.0 cu. ft. oven capacity - Cook more dishes at once
- Removable full-width storage drawer - Store cookware or kitchen accessories
- Cooktop "On" Indicator Light - Know when an element is on
- Lift-up cooktop - Quickly clean up spills and remove crumbs from the subtop

Appliance Accessories



DRYER VENT KIT
For use with all dryers.
Dryer Vent Kit **15-4063**



ALUMINUM FLEX DUCT
4" x 25' **15-4064**



DRYER CORD
6' 30 AMP 4-Prong **40-3034**



LOUVERED VENT HOOD
Vent Hood **15-4067**



ADJUSTABLE CLAMP
4" CLAMP **15-4068**



RANGE CORD
4 50 AMP 4-Prong **40-3035**



DISHWASHER HOOKUP
3/4" FPT x 3/4" Comp **12-0002**



DISHWASHER CONNECTOR
48" Stainless Steel **12-0003**



WASHER OUTLET BOX
Box (No Valves) **40-7000**



STAINLESS STEEL FLEX GAS CONNECTORS
Corrosion-resistant stainless steel series gas connectors are constructed of stainless steel 304 tubing and use Easyflex's zinc-plated fittings and valves for a wide variety of residential applications.

12-inch	40-5000
24-inch	40-5003
36-inch	40-5002
48-inch	40-5001

Locksets & Door Accessories



KNOCKER / VIEWERS

Satin Nickel **70-8184S**



ENTRANCE LOCKSETS

AP Products. May be used as 2-3/8" or 2-3/4" backset, includes both standard and drive-in latches.

Brass 70-8040B

Stainless Steel 70-8040S

Cardinal Entry Lock Only

Brass 70-8040BC

Stainless Steel 70-8040SC



PASSAGE LEVER LOCKSETS

AP Products

Brass 70-8042B

Stainless Steel 70-8042S

PRIVACY LEVER LOCKSETS

AP Products

Brass 70-8042PB

Stainless Steel 70-8042SS



DEADBOLTS

Cardinal Deadbolts

Brass 70-8041BC

Stainless Steel 70-8041SC



COMBO LOCKSETS

AP Products. Offers both a Knob-Knob and a Dead Bolt Lock with matching keys. May be used as a 2-3/8" or 2-3/4" backset, includes both standard and drive-in backsets.

Brass 70-8051B

Stainless Steel 70-8051S

Cardinal Combo Locksets

Brass 70-8051BC

Stainless Steel 70-8051SC



PASSAGE LOCKSETS

No lock. May be used as either a 2-3/8" or 2-3/4" backset.

AP Products

Brass 70-8069

Stainless Steel 70-8069S

Cardinal

Brass 70-8069C

Stainless Steel 70-8069SC



PRIVACY LOCKSETS

With button lock. May be used as either a 2-3/8" or 2-3/4" backset.

AP Products

Brass 70-8070

Stainless Steel 70-8070S

Cardinal

Brass 70-8070C

Stainless Steel 70-8070SC

Locksets & Door Accessories



BLACK PUSH BUTTON LATCHES
Black 70-8065



PNEUMATIC DOOR CLOSERS
Black 70-8063



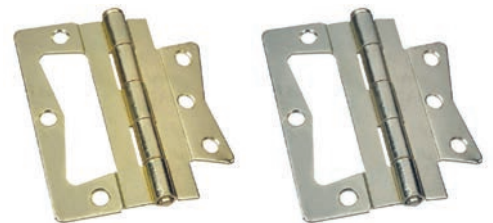
STORM DOOR WIND CHAINS
Wind Chain 70-8067



NON-MORTISE HINGES STANDARD
Brass 70-8201B
Satin Nickel 70-8201S



HARDWARE KITS FOR PNEUMATIC DOOR CLOSERS
White Hrdwr Kit 70-8063W
Black Hrdwr Kit 70-8063B



NON-MORTISE HINGES DELUXE
Brass 70-8202B
Satin Nickel 70-8203S



DOOR STOPS
Antique Brass 70-8206AB
Satin Pewter 70-8206SP



NYLON CLIPS W/ SCREWS
PACK OF 6
1/16" 70-3411



BRASS KNOB W/ SCREW
Brass 70-8208



DRAWER HANDLE
Polished Brass 70-8208H



BRASS PULL
Brass Pull BRASSPULL

Exterior Outswing Doors



9-LITE 6-PANEL
32" x 76" LH 71-1091W
32" x 76" RH 71-0091W



**6-PANEL
KNOCKER / VIEWER**
30" x 72" LH 71-0090BW
30" x 72" RH 71-0063W
32" x 72" LH 71-0063W
32" x 72" RH 71-0090WB
32" x 76" LH 71-1067W
32" x 76" RH 71-1067WR
34" x 76" LH 71-1077W
34" x 76" RH 71-1077WR



**4-PANEL
SUNBURST WINDOW**
32" x 72" LH 71-0090W
34" x 76" LH 71-1078WLSB



10" x 10" DIAMOND
36" x 80" RH 71-1174W



VERTICAL SLIDER
32" x 76" LH 71-1037W
32" x 76" RH 71-1038W

ADDITIONAL SIZES ARE AVAILABLE BY SPECIAL ORDER

Exterior Combo Doors with 4" or 6" Jamb



6-Panel with Knocker/Viewer	
	4" Jamb
32" x 76" LH	Special Order
32" x 76" RH	71-1311W
34" x 76" LH	71-1313W6
34" x 76" RH	71-1314W6
34" x 80" LH	71-1317W6
34" x 80" RH	71-1318W6
34" x 82" LH	71-1091
34" x 82" RH	71-6315WR
38" x 76" LH	71-6321W4
38" x 76" RH	71-6322W4
38" x 80" LH	71-1319W6
38" x 80" RH	71-1320W6
38" x 82" LH	71-1322W
38" x 82" RH	71-1323W

6-Panel with Knocker/Viewer	
	6" Jamb
32" x 76" LH	71-6005W6
32" x 76" RH	71-6006W6
34" x 76" LH	71-6313W6
34" x 76" RH	71-6314W
34" x 80" LH	71-6317W6
34" x 80" RH	71-6318W6
34" x 82" LH	71-6315W6
34" x 82" RH	71-6315W6R
38" x 76" LH	71-6321W
38" x 76" RH	71-6322W
38" x 80" LH	71-6319W6
38" x 80" RH	71-6320W6
38" x 82" RH	71-2024W6
38" x 82" LH	71-2023W6



6-Panel 9-Lite Window	
	4" Jamb
34" x 76" LH	Special Order
34" x 76" RH	71-1314W6
34" x 80" LH	71-6320W4
34" x 80" RH	Special Order

6-Panel 9-Lite Window	
	6" Jamb
34" x 76" LH	71-6313W69
34" x 76" RH	71-6314W69
34" x 80" LH	71-6321W69
34" x 80" RH	71-6320W69

Storm Doors



5645 Series Storm Doors	
32" x 76" LH	71-2001M
32" x 76" RH	71-2002M
34" x 76" LH	71-2015W
34" x 76" RH	71-2016W
38" x 76" LH	71-2001W
38" x 76" RH	71-2002W
34" x 80" LH	71-2019W
34" x 80" RH	71-2020W
38" x 80" LH	71-2021W
38" x 80" RH	71-2022W
38" x 82" LH	71-2023W
38" x 82" RH	71-2024W
34" x 82" LH	71-2014W
34" x 82" RH	71-2013W

Interior Doors



INTERIOR DOORS

	Flush Oak	White	6-Panel Oak	White 6-Panel	White 2-Panel
20" x 78"	71-2114L	71-2114WL			
20" x 80"	71-21006	71-21006W			
24" x 78"	71-2115L	71-2115WL	71-2115L6	71-2115WL6	71-2478W2
24" x 80"	71-2102L	71-2102WL	71-2102L6	71-2102WL6	71-2480W2
26" x 78"	71-2126L	71-2126WL			
26" x 80"	71-2104L	71-2104WL		71-2104WL6	
28" x 78"	71-2116L	71-2116WL	71-2116L6	71-2116WL6	71-2878W2
28" x 80"	71-2106L	71-2106WL	71-2106L6	71-2106WL6	71-2880W2
30" x 78"	71-2117L	71-2117WL	71-2117L6	71-2117WL6	71-3078W2
30" x 80"	71-2108L	71-2108WL		71-2108WL6	71-3080W2
32" x 78"	71-2118L	71-2118WL			71-3278W2
32" x 80"	71-2110L	71-2110WL			71-3280W2
36" x 78"	71-2119L	71-2119WL			
36" x 80"	71-2112L	71-2112WL		71-2112WL6	

Patio Doors



- Standard frame for use with all wall/siding types. Lap frame with integral siding pocket that eliminates the need for additional siding trim pieces.
- Heat fusion welded frame and moving panel provides superior structural strength and prevents potential leakage
- Staggered internal weep system allows minimum dust infiltration. Snap-in weep covers are standard.
- 3/4" sealed insulated tempered glass with "intercept" spacer and optional Low-E provides optimum thermal performance.
- High quality fin seal weatherstrip around moving panel perimeter ensures a positive seal against the elements.
- Fully adjustable factory lubricated steel tandem rollers mounted with ball bearings insures trouble free operation.
- Snap-in moving panel track with stainless steel roller guide cover designed to hold up with heavy use.
- Color coordinated mortise type keyed lock on steel reinforced lock jamb and anti-lift design give this door added security.
- Door easily reverses from XO to OX or OX to XO.



White Patio Doors
72" x 76" LH **71-2270L**

Patio Door Screen
Door Screen **71-2260**

Patio Door Handle
Door Handle **71-2270HANDLE**

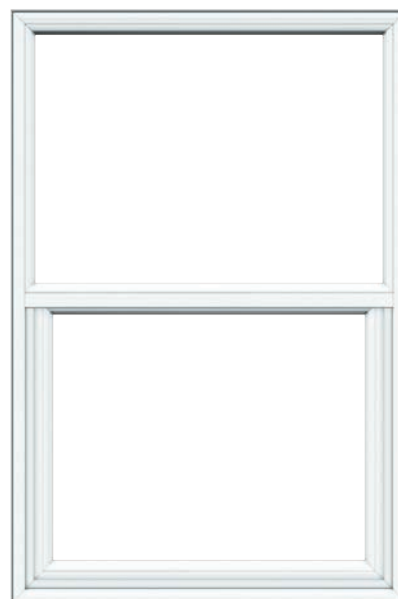
Patio Door Key Lock
Door Lock **71-2270LOCK**

Vinyl Windows



Features of Single Hung Windows

- Minimal maintenance level
- Lifetime Warranty
- White for neutral matching
- Glass is energy efficient, tinted, textured and protective.
- Argon gas
- Low-E



VINYL WINDOWS	
14" x 53"	72-1453 Picture window or vertical slider available
14.25" x 21.75"	72-2998V Picture window or vertical slider available
14.25" x 27"	72-3012V Picture window or vertical slider available
14.25" x 39.625"	72-3054V Picture window or vertical slider available
24" x 53"	72-2453
24.25" x 39.625"	72-3058V
30" x 32"	72-3032
30.25" x 27.125"	72-3018V
30.25" x 30"	72-3030
30.25" x 35.75"	72-3046V
30.25" x 39.625"	72-3060V
30.25" x 60"	72-3088V
30.25" x 58.375"	72-3074V
36" x 40"	72-3640V
36.25" x 35.75"	72-3048V
36.25" x 53.375"	72-3076V
36.25" x 60"	72-3090V
40" x 53"	72-3075V
40" x 60"	72-3078V
40.25" x 39.625"	72-3064V
46.25" x 39.625"	72-3066V
46.25" x 53.3125"	72-3080V
46.25" x 60"	72-6327V

Aluminum Windows



ALUMINUM MILL FINISH VERTICAL WINDOWS	
14" x 21.75"	72-1421
14" x 27"	72-1427
14" x 40"	72-3054
24" x 21"	72-3002
24" x 27"	72-3016
30" x 21"	72-3004
30" x 27"	72-3018
30" x 36"	72-3046
30" x 40"	72-3060
30" x 53"	72-3074
36" x 40"	72-3062
36" x 53"	72-3075
46" x 40"	72-3066
46" x 53"	72-3080

ALUMINUM SELF-STORING STORM WHITE VERTICAL WINDOWS	
14" x 21"	72-1421SSS
14" x 27"	72-1427SSS
14.25" x 39.625"	72-3055
14" x 53"	72-3071
24" x 27"	72-3017
30" x 21"	72-3005
30" x 27"	72-3019
30" x 36"	72-3047
30" x 40"	72-3061
30" x 53"	72-3075
36" x 40"	72-3063
36" x 53"	72-3077
46" x 40"	72-3067
46" x 53"	72-3081

ALUMINUM MILL FINISH HORIZONTAL WINDOWS	
46" X 40"	72-2094

ALUMINUM SELF-STORING STORM HORIZONTAL WINDOWS	
46" x 40"	72-209S

Mini Blinds



1" CORDLESS WHITE MINI BLINDS	
18" x 64"	83-3377C
23" x 64"	83-3060C
27" x 62"	83-3062
27" x 64"	83-3062C
29" x 64"	83-3064C
31" x 64"	83-3066C
33" x 64"	83-3068C
35" x 64"	83-3070C
39" x 64"	83-3074C
45" x 64"	83-3385C
48" x 64"	83-3078C

2" CORDLESS FAUX WOOD MINI BLINDS	
29" x 60"	83-2930
35" x 60"	83-3560
45" x 60"	83-4560

Glazing Bead for Windows



12' White Glazing Bead
 For Aluminum **72-3564**
 For Vinyl **72-3564V**

Skylights

Measure the inside opening.

Your measurement = Skylight you need

14" x 14" opening = 16" x 16"

30" x 30" opening = 32" x 32"

14" x 46" opening = 16" x 48"



Sapphire Skylights	
16" x 16"	80-1616S
16" x 24"	80-1624S
16" x 32"	80-1632S
16" x 48"	80-1648S
24" x 24"	80-2424S
24" x 32"	80-2432S
24" x 48"	80-2448S
32" x 32"	80-3232S
32" x 48"	80-3248S
48" x 48"	80-4848S

Dome Skylights	
16" x 16"	80-1616D
16" x 24"	80-1624D
16" x 32"	80-1632D
16" x 48"	80-1648D
24" x 24"	80-2424D
24" x 32"	80-2432D
24" x 48"	80-2448D
32" x 32"	80-3232D
32" x 48"	80-3248D
48" x 48"	80-4848D

Roof Coatings & Sealants



Wet-R-Dry Black Roof Coating
1 Gallon **60-7035e**



Lucas All-Weather Roof Cement
5 Gallon **60-7035**



Lucas 5 Gallon Roof Coating
2-3 Year **60-7037**
5 Year **60-7037S**



Lucas White Roof Coating
5 Gallon **60-7037W**



10 Oz. Silicone
Clear **60-7041C**
White **60-7041W**



Caulking
White Paintable **60-7042**



White Adhesive Caulking
10.1 Oz. **60-7044**



White Sealant Adhesive
Tub & Tile **60-7043**

Roof Coatings & Sealants



Putty Tape

3/4" x 30' 60-70453
 1" x 30' 60-70454
 1.5" x 30' 60-70455



Duct Tape

Gray 60-70792
 Black 60-7080



Painters Tape

1.5" 60-BLUE1.5
 2" 60-BLUE2



White Peel & Seal

3" x 33.5' 60-9054
 6" x 33.5' 60-9053
 18" x 33.5' 60-9060
 36" x 33.5' 60-9052



Aluminum Peel & Seal

3" x 33.5' 60-9055
 6" x 33.5' 60-9051
 18" x 33.5' 60-9061
 36" x 33.5' 60-9050



SPRAY ADHESIVE

APC # 79 12 oz can 60-7034

Tools & Screws



Clutch Power Bits
 1/4" x 1 15/16" Drive x
 Length Size 5/32G
75-9022
 1/4" x 15/16" Drive
 x Length Size 3/16G
75-9022C



Square Recess Power Bits
 1/4" x 2" Drive x Length Size #2
75-90305
 1/4" x 3" Drive x Length Size #2
75-90315
 1/4" x 6" Drive x Length Size #2
75-90315L



Phillips Power Bits
 1/4" x 2" Drive
 x Length Size #2
75-90308
 1/4" x 2 3/4" Drive
 x Length Size #2
75-90308
 1/4" x 6" Drive
 x Length Size #2
75-90309



Magnetic Power Nutsetters
 1/4" x 1 3/4" Drive x Length Size 1/4
75-9035
 1/4" x 2 9/16" Drive x Length Size 1/4
75-9035L
 1/4" x 2" Tapered Drive x Length Size 1/4
75-9035T
 1/4" x 1 3/4" Drive x Length Size 5/16
75-9036
 1/4" x 2 9/16" Drive x Length Size 5/16
75-9036L



Parker Rolo Flare Tools
 For soft metal tubing.
 Precision burnished 45°
 flares in tube sizes from 2
 (1/8 inch O.D.) to 12 (3/4 inch
 O.D.) with an easy turn of
 the handle. For copper and
 aluminum alloy.
Flaring Tool 75-9014



**CASES Hex Head Washer
 Screws - White**
 8 x 1 **35-9004WH**
 8 x 1.5 **35-9006WH**
**CASES Hex Head Washer
 Screws - Zinc**
 8 x 1 **35-9004ZN**
 8 x 1.5 **35-9006ZN**



Quadrex Screws
 1" Raw 100/pk **35-1209**
 2" Raw 100/pk **12-2010**
 3" Raw 100/pk **12-2011**



**Hex Head Washer Screws
 Brown**
 8 x 1 100/pk **35-6004BR**
 8 x 1 500/pk **35-7004BR**
 8 x 1 1M/pk **35-8004BR**
 8 x 1.5 100/pk **35-6006BR**
 8 x 1.5 500/pk **35-7006BR**
 8 x 1.5 1M/pk **35-8006BR**
**Hex Head Washer Screws
 White**
 8 x 1 100/pk **35-6004WH**
 8 x 1 500/pk **35-7004WH**
 8 x 1 1M/pk **35-8004WH**
 8 x 1.5 100/pk **35-6006WH**
 8 x 1.5 500/pk **35-7006WH**
 8 x 1.5 1M/pk **35-8006WH**
 8 x 2 100/pk **35-6008WH**

**Hex Head Washer Screws
 Zinc**
 8 x 1 100/pk **35-6004ZN**
 8 x 1 500/pk **35-7004ZN**
 8 x 1 1M/pk **35-8004ZN**
 8 x 1.5 100/pk **35-6006ZN**
 8 x 1.5 500/pk **35-7006ZN**
 8 x 1.5 1M/pk **35-8006ZN**
 8 x 2 100/pk **35-6008ZN**



**Flat Head Quadrex
 Recessed Screws in Zinc**
 2" Raw Case **12-2010C**
 3" Raw Case **35-1212**
 4" Raw Case **35-1213**

Bath Tubs



WHITE Lyons Victory Fiberglass Bath Tubs

30" x 60" x 16"

Left Drain **40-3305WL**

Right Drain **40-3305WR**



WHITE BetterBath ABS Plastic Bath Tubs

27" x 54"

Left Drain **40-3308P**

Right Drain **40-3307P**

Center Drain **40-3313P**

WHITE BetterBath ABS Plastic Bath Tubs

30" x 60"

Center Drain **40-3060**

BONE BetterBath ABS Plastic Bath Tubs

27" x 54"

Left Drain **Special Order**

Right Drain **Special Order**

Center Drain **Special Order**

Bath Tubs



WHITE Front Line Fiberglass Bath Tubs

27" x 54"

Left Drain **40-3310W**

Right Drain **40-3309W**

Center Drain **40-3310WC**

BONE Front Line Fiberglass Bath Tubs

27" x 54"

Left Drain **Special Order**

Right Drain **Special Order**

Center Drain **Special Order**



WHITE ABS BetterBath Garden Bath Tubs

40" x 54"

Center Drain **40-3319P**

40" x 60"

Center Drain **40-3320P**

42" x 60"

Center Drain **40-3318W**

BONE ABS BetterBath Garden Bath Tubs

40" x 54"

Center Drain **Special Order**

40" x 60"

Center Drain **Special Order**



WHITE Front Line Fiberglass Garden Bath Tubs

42" x 54"

Center Drain **40-3319F**

43" x 60"

Center Drain **40-4360**

Bath Tubs



WHITE BetterBath ABS Corner Tub

54" x 54"

Center Drain **40-5454**

Right Drain **Special Order**



WHITE Fiberglass Drop In Tub

42" x 60"

Center Drain **40-DROPIN**

Surrounds



BetterBath ABS 3-Piece Bath Tub Surrounds

Made of ABS plastic. Soap dish is pre-molded in. Size is 27" x 54". White. Corner caddies needed.

- 3-Piece White Surround** **38-4000W**
- 3-Piece Bone Surround** **38-4000C**
- (2) White With Corner Caddies** **38-4000WC2**
- (2) Bone With Corner Caddies** **38-4000BC**



3-Piece BetterBath Bath Tub Surrounds

Made of ABS plastic. For 40-48" x 54-60" bath tubs. Corner caddies needed.

- 3-Piece White Surround** **38-1955**
- 3-Piece Bone Surround** **38-1994**
- (2) White With Corner Caddies** **38-4000WC2**
- (2) Bone With Corner Caddies** **38-4000BC**



BetterBath ABS 1-Piece Bath Tub Surrounds

Made of ABS plastic. Corner caddies are required and not included.

- 27" x 54" White** **40-3311W**
- 27" x 54" Almond** **40-3311B**
- 40" x 54" White** **38-3318P**



BetterBath ABS 3-Piece Bath Tub Surrounds

Made of ABS plastic. Corner caddies are not required.

- 27" x 54" White** **40-3318WW**
- 27" x 54" Bone** **40-3318BW**



SPRAY ADHESIVE

APC # 79 12 oz can **60-7034**

Surrounds



Lyons Elite 3-Piece White Tub Walls

Acrylic surface reinforced with fiberglass. Installs direct to studs. No caulk assembly. 3 piece surround packaged in one carton. Fixtures sold separately.

60" x 30" x 59" **Special Order**
27" x 54" White Kit **40-3310WKIT**
27" x 54" Biscuit Kit **40-3310BWIT**



Lyons 3-Piece White Shower Walls

Acrylic surface reinforced with fiberglass. Installs direct to studs. No caulk assembly. 3 piece surround packaged in one carton. Fixtures sold separately.

27" x 54" White **40-3321WK**



ABS 1-Piece Shower Surrounds

32" x 32" White **40-3325W**
32" x 32" Bone **40-3325B**



Fiberglass 3-Piece Shower Surrounds

32" x 32" White **40-3320W**
32" x 32" Bone **Special Order**

Showers & Bath Enclosures



ABS Shower Bases

28" x 54" White LH	40-3324W
28" x 54" White RH	40-3323WR
28" x 54" Bone LH	40-3324BL
28" x 54" Bone RH	40-3323B
32" x 32" White C	40-3321W
32" x 32" Bone C	40-3322B



Fiberglass Shower Bases

27" x 54" White LH Lyons	40-3334CF
27" x 54" White C Frontline	40-3321WFG
28" x 54" White RH Lyons	40-3321RFG
32" x 32" White C Frontline	40-3320WF



Bi-Pass Tub Enclosure Doors

For use on 27" x 54" bath tubs. Made of stainless steel obscured tempered glass for good privacy with a chrome frame.

54" Tub Enclosure **532001**



Bi-Pass Shower Doors

40" - 44" Shower Door	532004
52" - 56" Shower Door	532008



Hinge Shower Doors

28" Stainless Steel	532002A
32" Stainless Steel	532006

Faucets



Trusted Since 1950

The leading and longest tenured supplier of specialized faucets and plumbing accessories to the recreational vehicle ("RV") and manufactured housing ("MH") industries.



Non-Metallic Tub / Shower Diverter with Shower Head
8" Diverter **40-3174ABS**



Non-Metallic Tub / Shower Diverter
8" Faucet Only **40-3174AB**



4" 2-Handle Lavatory Faucets
Brass Underbody **40-3003**



4" Sabre Handle Lavatory Faucets
All celcon **40-3003P**



4" Non-Metallic Lavatory Faucets
Chrome **40-3003AB**

Faucets



**Tub Diverters with Pullup
2-Valve 40-3013P**



**Shower Arm Kits w/Head
Kit 40-3015**



**Brass Shower Diverters
8" w/Inline Shanks
40-3016B**



**Shower Heads Only
1/2" shower head
Shower Head 40-30141**



**Wide Shower Heads Only
Deluxe 1/2" shower head
Shower Head 40-30141W**



**Garden Tub Diverters
Diverters 40-3014G**



**Single Handle
Tub & Shower Faucets
Faucets 40-3017**



**Tub & Shower Faucets
W/O Shower Head, 8"
Non-Metallic 40-3016AB
W/ Shower Head, 8"
Non-Metallic 40-3016ABS**

Faucets



Single Lever Kitchen Faucets
8" No Spray **40-30007**



Single Lever Kitchen Faucets
8" With Spray **40-30007S**



Non-Metallic Kitchen Faucets
8" No Spray **40-3000AB**



2-Handle Kitchen Faucets
8" With Spray **40-3000S**



8" Arch Faucets with Spray
With Spray **40-3124**
Without Spray **40-3126**



Single Handle Pullout Kitchen Faucets
Chrome **40-3124SPO**



Kitchen Faucet Spray Head & Hose
Proplus 48" **40-3172**



Hi Rise Spout for Kitchen Faucets
Spout **40-3304**



Shower Only Faucets 8"
W/O Shower Head **40-30059AB**
W/Shower Head **40-30059ABS**



Garden Tub Faucets
Spout Only **40-3009**



Garden Tub Fillers
Garden Tub Fillers **40-3013G**



Garden Tub Fillers
Brass Underbody **40-3013B**



Garden Tub Faucets
Plastic Underbody **40-3013GAB**



3-Valve Diverters with Pullup
Diverter w/Pullup **40-3013**

Sinks



ABS Oval Bathroom Sinks

Bone 17" x 20" **40-3025B**
White 17" x 20" **40-3025W**



ABS Rect. Bathroom Sinks

Bone 17" x 20" **40-3025PB**
White 17" x 20" **40-3025PW**
White 17" x 20" **40-3026WL**



Ceramic Oval Bathroom Sinks

Bone w/Overflow 17" x 20"
40-3025BP
White w/Overflow 17" x 20"
40-3025WP



Stainless Steel Kitchen Sinks

19" x 33" x 6" 4-Hole **40-3031**
19" x 33" x 7" 4-Hole **40-30317**
19" x 33" x 8" 4-Hole **40-30318**
22" x 33" x 6" 4-Hole **40-3032**

Toilets & Toilet Parts



Toilets (Seat Not Included)

1.28 GPF flush complete toilet set – less seat; includes tank, bowl, and installation parts. Round bowl, white glazed finish. 2" fully-glazed trapway MaP flushing performance score: 600 grams 12" rough-in Includes anti-siphon fill valve, 2" flapper. White tank lever. Includes brass tank-to-bowl bolts and bolt caps. Use with Proplus flush valve.

White Toilet Round (Tank & Bowl Only)

40-3361W

White Toilet Elongated (Complete with Toilet Seat)

40-3361WL

Toilet Seats

White Round Seat

40-3028W

Bone Round Seat

40-3028B

White Elongated Seat

40-3028



Towel Bar Sets

Towel Bar

40-3015TBS



Toilet Tissue Holder

Tissue Holder

40-3015TPR



Toilet Paper Roller

Roller

40-ROLLER



Toilet Supply Line

16" x 3/8"

50-4580TT

20" x 3/8"

50-4580T

Kitchen & Bath Parts



IP Floor Plates
1/2" **40-1810**



Plastic Basket Strainers
Strainers 40-3041



PVC Bath Tub Molding
White 7' **38-2011**



Bath Drain Face Plate
Face Plate **40-3202**



Tub / Shower Covers
2-Hole Chrome **40-2COVER**
3-Hole Chrome **40-3COVER**



Bath Tub Rivets 1"
White Rivets **40-3312W**
Almond Rivets **40-3312B**



Bath Tub Repair Kit
Kit can repair white or almond in color. Repairs holes up to 1 diameter or tears up to 5 in length. Excellent for fiberglass, plastic and enamel.
Tub Repair Kit 40-3302



Chrome Hole Cover
Chrome Cover **40-3203**



Chrome Shower Drains
3.5" Drains **40-3043**

Kitchen & Bath Parts



Crystal Handles
Fits 17 point brass stems.
Crystal Handles 40-30245B



HOT and COLD Handles for Garden Tubs
HOT Handle 40-3124H
COLD Handle 40-3124C



Crystal Handles
Fits Non-Metallic Stems
40-30245HC
Utopia Faucet Handles
40-3024GS



HOT and COLD Handles
HOT Handle 40-30245H
COLD Handle 40-30245C



Shower Diverter Stems
Stems 40-3022P



Stem and Bonnets
Phoenix 40-3019



Washerless Stem and Bonnets
Stem & Bonnet 40-3020



Brass Stem and Bonnets
Stem & Bonnets
(Not a pair) 40-3021



Replacement Hoses
For faucet filler.
Hose 40-3025



Replacement Filler Tees
Filler Tee 40-3018



ABS Continuous Waste
With Dishwasher Outlet
40-3062
Without Dishwasher Outlet
40-3064



Plastic Clean Out Drain Plugs
Bone 40-3065B
Regular 40-3065P
White 40-3065W

Kitchen & Bath Parts



Clean Out Plugs
 W/O Overflow **40-3066**
 With Overflow **40-3066M**
 With Overflow Chrome **40-3066W**
 With Overflow Metal **40-3066WM**



Rubber Stoppers
 1 3/4" **40-3067L**
 1 1/2" **40-3067S**



Garbage Disposers
 1/3 HP **40-3068**



Garbage Disposer Covers
 Cover **40-3068C**



Garbage Disposer Kits
 Kit **40-3069**



Slip Joint Washers
 1 1/2" x 1 1/4" **40-3070**



ABS P Traps
 1 1/2" **40-3075**



ABS Adapters
 1 1/4" **40-3077A**
 1 1/2" **40-3077**



ABS Tray Plug Adapters
 1 1/2" **40-3077**



Fluidmaster Anti-Siphon Fill Valves
 Fits Universal Fit Brand.
 3" x 3" x 12.6" **40-3081**



Rubber Toilet Flappers
 Toilet Flapper **40-3084**



Automatic Plumbing Vent
 Vent Check **20-7030**

Kitchen & Bath Parts



Flush Valve Kits
2" Pro Series 40-3090



Closet Bolt Tank to Bowl Kits
Kit 40-3092



Closet Bolts
Closet Bolt 40-3093



ABS Closet Flanges
Female 40-3094



ABS Closet Flanges
Male 40-3095



ABS Closet Flanges
Hub x Hub 40-3095H



Wax Ring with Horn
Wax Ring w/Horn 40-3096
Wax Ring Only 40-3097



Metal Flush Levers
Flush Lever 40-3104



Black Rubber Washers
Washer 1 1/2" 40-3136



Stem and Bonnet Pair
Stem & Bonnet 40-3153



Valve for Garden Tub Faucets
End Valve 40-3160



Plastic Tub Drains
Tub Drain 40-4039



Lift & Lock Metal Tub Drains
With Nut 40-4039M



Metal Lock Nuts
Lock Nut 1 1/2" 40-4039W



Toe Touch Tub Drains
Tub Drain 40-4041

Kitchen & Bath Parts



Adjustable Shower Rods
White **40-5186W**
Bone **40-5186B**



Faucet Connectors
12" **50-4580B**
16" **50-4580**
20" **50-4581**

Paneling & Drywall



3/8" Thick Drywall

- 4' x 9 1/2' Plume Moonlight Panel **10-2055**
- 4' x 8' Unfinished Panel **10-2056**



Paneling

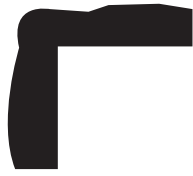
- 4' x 8' Nutmeg Oak Paneling **10-2053**
- 4' x 8' Charlotte Oak Paneling **10-2054**
- 4' x 8' Plume Moonlight Panel **10-2050**



Rosettes with Screws

- White Rosettes **35-1000**

Trim / Molding



Large Outside Corners

15/16" x 8' Chocolate	35-2000C
15/16" x 8' Charlotte Oak	35-2000L
15/16" x 8' White	35-2000LW
15/16" x 8' Hickory	35-2002L



Shoe Molding

Charlotte Oak	
5/8" x 7'	35-2006
White	
1/2" x 7'	35-2006W
Chocolate	
9/16" x 8'	35-2006D
Hickory	
9/16" x 8'	35-2008



Small Casing

Charlotte Oak	
1 1/2" x 7'	35-2009
White	
1 1/2" x 7'	35-2009W
Hickory	
1 1/2" x 7'	35-2011



Large Casing

Hickory	
3/8" x 2" x 7'	35-2009D
Chocolate	
3/8" x 2 3/4" x 10'	35-2011L
2 1/4" x 7' Charlotte Oak	35-2009L
2 1/4" x 7' White	35-2009LW



Battens

Plume Moonlight
USE WITH DRYWALL

7/8" x 9' 35-2013W

Chocolate
7/8" x 8' 35-2014

Charlotte Oak
7/8" x 8' 35-2012

White
7/8" x 8' 35-2055B

Hickory
7/8" x 8' 35-2012D

Chocolate
1 1/2" x 8' 35-2004

Charlotte Oak
1 1/2" x 8' 35-2010

White
1 1/2" x 8' 35-2010W

Hickory
1 1/2" x 8' 35-2016N

Chocolate
2" x 8" 35-2007

Charlotte Oak
2" x 8' 35-2016

White
2" x 8' 35-2016W

Hickory
2" x 8' 35-2016D

Charlotte Oak
3" x 8' 35-2063

White
3" x 8' 35-2063W

Hickory
3" x 8' 35-2064

Trim / Molding and Door Jamb



Tri-Molding

Plume Moonlight

5/32" x 2" x 8' **35-2012T**



Base Molding

Charlotte Oak

10' **35-2024L**

Hickory

10' **35-2024D**

White

10' **35-2024LW**



Crown Molding

Charlotte Oak

2 1/2" **35-2030**

Chocolate

1/2" **35-2030C**

White

2 1/2" **35-2030W**

Hickory

5/16" x 2 7/16" x 10' **35-2031**



Large Casing Stop

Charlotte Oak

5/8" x 11/16" x 10' **35-2026**

Hickory

5/8" x 11/16" x 10' **35-2027**

White

3/8" x 1 1/4" x 10' **35-2026W**

Charlotte Oak

1/4" x 1 1/4" x 10' **35-2026F**



Door Stop

White

10' **35-2026WL**



Chair Rail

Charlotte Oak

2 3/4" x 10' **35-2020**

White

2 3/4" x 10' **35-2020W**

Hickory

2 3/4" x 10' **35-2022**



Door Jamb Material

White

1/2" x 3 1/2" x 8' **35-2053W**

Chocolate

1/2" x 4.5" x 8' **35-2053**

Charlotte Oak

1/2" x 4.5" x 8' **35-2052**

Hickory

1/2" x 4.5" x 8' **35-2052D**

White

1/2" x 4.5" x 8' **35-2052W**

Chocolate

1/2" x 6" x 8' **35-2051**

Charlotte Oak

1/2" x 6" x 8' **35-2049**

Hickory

1/2" x 6" x 8' **35-2049D**

White

1/2" x 6" x 8' **35-2049W**

Chocolate

1/2" x 8" x 8' **35-2059**

Charlotte Oak

1/2" x 8" x 8' **35-2058**

Hickory

1/2" x 8" x 8' **35-2058D**

White

1/2" x 8" x 8' **35-2058W**

Trim and Parts



Square Shoe Molding

Hickory

3/8" x 3/4" x 7' **35-2887D**

Charlotte Oak

3/8" x 3/4" x 7' **35-2887**

White

3/8" x 3/4" x 7' **35-2887W**

Tuscany Maple

3/8" x 3/4" x 7' **35-2888**



Grace Drawer Slide Kit

21 1/2" Slide **35-2055KIT**



Nailin Drive Anchor

1/4" x 1/4" Zamac **35-2815**

Electrical Equipment



Snap-On Switch Cover Plates
 Brown 30-9086B
 Ivory 30-9086I
 Almond 30-9086LA
 White 30-9086W



2 Snap-On Switch Cover Plates
 White 30-9087W



Self-Contained Receptacles
 Brown 30-9094S
 Ivory 30-9095S
 Almond 30-9094SLA
 White 30-9096S



Self-Contained Paddle Switches
 Brown 30-9097S
 Ivory 30-9098S
 Almond 30-9097SLA
 White 30-9099S



Glass Globes
 6" Frosted Glass 30-9163
 6" White 30-9163W



11" Ceiling Lights 1 Bulb
 2 per pack 30-9172
 White Globe (Single) 30-9172G
 Stainless Steel Fixture (Single) 30-9172S



Ceiling Fixtures 3 1/4"
 White W/O Chain 30-9163F
 White W/ Chain 30-9163FS
 Brushed Nickel W/O Chain 30-9163BN



Ceiling Fixtures 2-Bulb
 White 30-9168

13" Ceiling Lights 2 Bulb
 2 per pack 30-9184
 White Globe (Single) 30-9184G
 Stainless Steel Fixture (Single) 30-9184S

Electrical Equipment



ALABASTER GLASS GLOBE

6" Globe **30-9307**
8" Globe **30-9203**



6" FLUSH MOUNT FIXTURES SINGLE BULB

White **30-9304**
Brushed Nickel **30-9305**
Crimson Coffee **30-9306**



8" FLUSH MOUNT FIXTURES DOUBLE BULB

White **30-9300**
Brushed Nickel **30-9301**
Crimson Coffee **30-9302**



Metal Carriage Porch Fixtures

Black **30-9219**
White **30-9220**



Jelly Jar for Porch Fixtures

Glass Globe **30-9201**



Metal Porch Fixtures

Black **30-9200**
White **30-9200W**



Light Bulbs 40W

6 per pack **30-9202**



Light Bulbs 60W

24 per pack **20-6000**



Plastic White Finials

Plastic Finials **30-9217**



Black Electrical Tape

Electrical Tape **60-7078**

Vents & Caps



Plastic Plumbing Vent
For 1 1/2" Pipe **20-7000**



Galvan. Steel Plumbing Vent
For 1 1/2" Pipe **20-7001**



Bracket for Horizontal Bath Fan
Bracket **20-7002**



4-Blade Range Hood Fan
Black **20-7003**



Sidewall Exhaust Fan
115 Volt **20-70033W**



Range Hood Motor
Range Hood Motor **20-7004**



5-Blade Range Hood Fan
White **20-7005**



Sidewall Exhaust Fan Motor
75 CFM **20-7006**



Outside Vent for Range Hood
Range Hood Vent **20-70086**



Motor for Bath Vent Fan
50 CFM **20-7016**



Replacement Light Lens
Light Lens **20-70141**



Fan Motor with Light
100 CFM **20-7015**



Fan Blade for Ceiling Vent Fan
White 3" **20-7017**

Vents & Caps



Range Hoods TOP Vent

- White 30" 20-7050W
- Black 30" 20-7050B
- White 42" 20-70181
- Black 42" 20-70181B



Range Hoods HORIZONTAL Vent

- White 30" 20-70193
- Black 30" 20-70193B
- White 42" 20-70182
- Black 42" 20-70182B



Ductless Range Hoods

- White 30" 20-70184
- Black 30" 20-70184B
- White 42" 20-70183
- Black 42" 20-70183B



Replacement Grill Cover

- White 20-7020



Range Hood Filters

- 8" x 8" 20-7021
- 8" x 8" Ductless 20-7021D



Light Lens for Fan with Light

- Light Lens 20-7025
- V2280 Bath Fan 20-7025HZ



Reflector Flange Assembly

- For Lighted Bath Fan V2244 20-7026



Grill Spring Lens Assembly

- For V2280 Bath Fan 20-7026HZ



Automatic Plumbing Vent

- Vent Check 20-7030



Impellor for Ceiling Fan

- Impellor 20-7031

Vents & Caps



Roof Caps

5" for Flat Roof (V2005-00)

20-7032

5" for Flat Roof (V2056-00)

20-7033

7" for Flat Roof (VA0505-01)

20-7044

7" for Sloped Roof (VA0507-01)

20-7044V



Lighted Ceiling Bath Fans

115V 50 CFM 3" Diameter

Vertical

20-7041

115V 75 CFM 3" Diameter

Vertical

20-70411

115V 75 CFM 3" Diameter

Horizontal

20-70411HZ



Non-Lighted Ceiling Bath Fans

115V 50 CFM 7" Diameter

20-7040

115V 75 CFM 7" Diameter

20-70401



Square Brown Bath Fans

W/Light

20-7041BV



White Bath Fan Grills

White

20-7041G



Lighted Bathroom Fans

115V 50 CFM, 3" Diameter

Horizontal Exhaust

20-7041HZ



Non-Lighted Bathroom Fans

115V 50 CFM, 3" Diameter

Horizontal Exhaust

20-7042

115V 75 CFM, 3" Diameter

Horizontal Exhaust

20-70421

Hardware



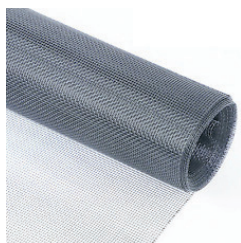
Grace Plastic Black Sockets
Sockets **35-1038**



Deluxe Drawer Guides
Drawer Guides **35-1038DDG**



Delta Drawer Plates
Drawer Plates **35-1043DP**



Charcoal Screen
36" x 100' **35-1051**
48" x 100" **35-1053**



White Screen Frames
12' White **35-1225**
12' Mill Finish **35-1228**



Screen Frame Clips
Clips **35-1229**



Screen Spline
Sold by the foot
35-1233



Window Corner Inserts
White **35-1234W**
Mill Finish **35-1234G**



Drawer Glides
2 per pack **35-2054**



Grace Rails
24" **35-2055**



Adjust-O-Mount with Tongue
Adjust-O-Mount
35-2055AOM



Self-Closing Hinges
for Interior Doors
Brass **70-8210B**
English **70-8210E**



Non Self-Closing Hinges
for Interior Doors
Brass **70-8211B**
English **70-8211E**

Hardware



Closet Door Track Kit

4' Track Kit **801670**
5' Track Kit **70-8213**
6' Track Kit **70-8214**



Springs for
Self-Storing Storm Windows
Spring **71-8353**



Latches for
Self-Storing Storm Windows
Left Hand **71-8804**
Right Hand **71-8805**

Safety & Misc. Items



Fire Extinguishers
5 lb. **80-1047**



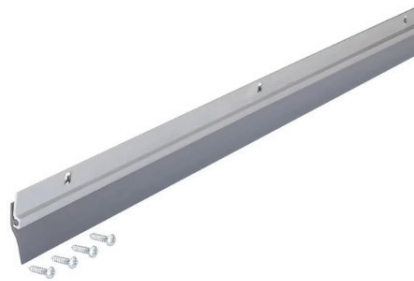
Wall Guards / Protectors
5" White **80-2100**
3 5/16" White **80-2105**



Smoke Alarms
9 Volt Battery **85-2005**
W/Battery Backup **85-2005E**



Carbon Monoxide Detectors
129419 **85-2005C**



Aluminum Door Sweep
36" **DOORSWEEP**

Carpet & Vinyl Flooring



Carpet Padding
6 lb. Rebond 30 Yard
Carpet Padding **50-PAD**



4" Seam Binder
Seam Binder **35-1023**

Ask about carpeting & vinyl options!

INDEX

10" X 10" DIAMOND DOORS	57	ANTI-SIPHONS	82
4-PANEL SUNBURST DOORS	57	APPLIANCE ACCESSORIES	54
6-PANEL DOORS	57	AUTO FOUNDATION VENTS	10
9-LITE DOORS	57	AUTOM. PLUMBING VENTS	82,92
A/C PADS	30	BASE MOLDING	87
A/C WHIPS	27	BASEBOARD DIFFUSERS	28
ABS	40,41	BASKET STRAINERS	80
ABS ADAPTERS	41,82	BATH DRAIN FACE PLATES	80
ABS CEMENT	40,46	BATH FANS	93
ABS CLEAN OUT ADAPTERS	40	BATH TUB DIVERTERS	75-77
ABS CLEAN OUT PLUGS	40	BATH TUB DRAINS	83
ABS CLOSET FLANGES	83	BATH TUB FAUCETS	75-77
ABS COUPLINGS	40	BATH TUB MOLDING	80
ABS ELBOWS	41	BATH TUB REPAIR KITS	80
ABS FITTINGS	40,41	BATH TUB RIVETS	80
ABS P TRAPS	82	BATH TUB SURROUNDS	72
ABS PIPE	40	BATH TUB WALLS	73
ABS REDUCING BUSHINGS	40	BATH TUBS	69-71
ABS SEWER PLUGS	40	BATH VENT FAN MOTORS	91
ABS SOIL RISER DONUTS	40	BATHROOM FAUCETS	75-77
ABS TEES	41	BATHROOM FAUCET HANDLES	81
ABS TRAY PLUG ADAPTERS	40,82	BATHROOM SINKS	78
ABS WYE	41	BATTENS	86
ACCESS DOORS	10	BI-PASS SHOWER DOORS	74
ACCESS PANELS	31	BITS	68
A-COILS	20	BLACK	43
ADHESIVE CAULKING	66	BLACK CAPS	43
ADHESIVES	17	BLACK COUPLINGS	43
ADJUSTABLE CLAMPS	54	BLACK ELBOWS	43
ADJUSTABLE OUTRIGGERS	14	BLACK FITTINGS	43
ADJUST-O-MOUNT	94	BLACK NIPPLES	43
AIR CONDITIONER A-COILS	20	BLACK PIPES	43
AIR CONDITIONERS, PACK- AGED	21	BLACK TEES	43
AIR CONDITIONERS, SPLIT	19	BLACK UNIONS	43
AIR FILTERS	29	BLINDS	64
ALL-WEATHER ROOF CEMENT	66	BLOWER MOTORS	27
ALUMINUM DOOR SWEEPS	96	BOTTLE JACKS	15
ALUMINUM SIDING	11	BRASS	42
ALUMINUM SKIRTING	5	BRASS ADAPTERS	42
ALUMINUM SKIRTING CHART	4	BRASS FITTINGS	42
ALUMINUM WINDOWS	63	BRASS FLARE NUTS	42
ANCHORS	16	BRASS KNOB W/ SCREW	56
ANTIFREEZE	31	BRASS PULLS	56

INDEX

BRASS VALVES	42	DOORS, ACCESS	10
BUCKLE STRAPS	17	DOORS, COMBO	58
CAP BOARDS	15	DOORS, FURNACE	30
CARBON MON.DETECTORS	96	DOORS, INTERIOR	60
CARPET	97	DOORS, OUTSWING	57
CARPET PADDING	97	DOORS, PATIO	61
CARRIAGE LIGHTS	90	DOORS, STORM	59
CASING	86,87	DOORS, WATER HEATER	49
CAULKING	66	DOUBLE WIDE WRAP	16
CEILING FAN IMPELLOR	92	DRAWER GUIDES	94
CEILING FANS FOR BATH	93	DRAWER HANDLES	56
CEILING FIXTURES	89	DRAWER PLATES	94
CEILING LIGHTS	89	DRAWER SLIDE KITS	88
CEILING VENT FAN BLADES	91	DRYER CORDS	54
CEMENT AND TAPE	46	DRYER VENT KITS	54
CHAIR RAIL	87	DRYERS	51
CHROME HOLE COVERS	80	DRYWALL	85
CLEAN OUT DRAIN PLUGS	81	DUCT BOARD	27
CLEAN OUT PLUGS	82	DUCT TAPE	67
CLOSE-OFF TAPE	15	EASYHEAT HEAT TAPE	18
CLOSET BOLTS	83	ELECTRICAL OUTLETS	89
CLOSET CONNECTION	45	ELECTRICAL TAPE	90
CLOSET DOOR TRACK KITS	95	ENTRANCE LOCKSETS	55
CLOSE-UP FILM	16	EXHAUST FANS	91
CLUTCH POWER BITS	68	EXPANSION BOLTS	16
COLD HANDLES	81	EXTENSION PIPES	48
COMBO DOORS	58	EXTERIOR COMBO DOORS	58
COMBO LOCKSETS	55	EXTERIOR OUTSWING DRS	57
CONDENSER FAN MOTOR	27	FAN MOTOR W/ LIGHT	91
CONTINUOUS WASTE	81	FAUCET CONNECTIONS	45,84
COPPER TUBING	42	FAUCET HANDLES	81
CROSS DRIVE ANCHORS	16	FAUCETS	75
CROWN MOLDING	87	FIBERGLASS FILTERS	29
CRYSTAL HANDLES	81	FIBERGLASS INSULATION	18
DEADBOLTS	55	FILTER KITS	29
DELUXE DRAWER GUIDES	94	FILTERS	29
DIGITAL THERMOSTATS	28	FINIALS	90
DISCONNECTS	26	FIRE EXTINGUISHERS	96
DISHWASHER CONNECTORS	50,54	FLAIR-IT	36-37
DISHWASHER HOOKUPS	50,54	FLAIR-IT ADAPTERS	36,37
DISHWASHERS	50	FLAIR-IT COUPLINGS	36,37
DOOR JAMB MATERIAL	87	FLAIR-IT ELBOWS	36,37
DOOR STOPS	56,87	FLAIR-IT SWIVEL ELBOWS	36,37
DOOR SWEEPS, ALUMINUM	96	FLAIR-IT TEES	36,37

INDEX

FLAIR-IT VALVES	36	GLASS GLOBES	89
FLAIR-IT WASH MACH VALVES	37	GLAZING BEAD	64
FLANGE ASSEMBLY	92	GRACE RAILS	94
FLARE TOOLS	68	GRACE SOCKETS	94
FLEX DUCT	27,54	GREY RUBBER ROLLS	33
FLEX GAS CONNECTIONS	32	GRILL COVERS	92
FLEX GAS CONNECTORS	26,49	GRILL SPRING LENS ASSY.	92
FLEX MEND	33	HANGER IRONS	32
FLEX MEND REPAIR KITS	33	HANGER IRON BOLTS	32
FLEX MEND ROLLS	33	HANGER STRAP, PVC	32
FLEX MEND SHEET	33	HARDWARE FOR DOORS	56
FLEX MEND TAPE	33	HARDWOOD CAP BOARDS	15
FLEX WATER CONNECTORS	48	HARDWOOD WEDGES	15
FLEXIBLE DUCT	27	HEAT ONLY THERMOSTATS	28
FLOOR PLATES	80	HEAT TAPE	18
FLOOR REGISTER COLLARS	28	HEAT TAPE END PLUG KIT	18
FLOOR REGISTERS	28	HEAT TAPE CAPS	18
FLOORING	97	HEAT & COOL THERMOSTATS	28
FLUIDMASTER FILL VALVES	82	HEX LAG BOLTS W/WASHERS	16
FLUSH LEVERS	83	HIGH WIND CAPS	48
FLUSH VALVE KITS	83	HINGES	94
FOAM PIPE INSULATION	18	HOGHAIR FILTERS	29
FOIL TAPE	30	HORIZ. BATH FAN BRACKETS	91
FOUNDATION PADS	14	HOSES FOR FAUCET FILLERS	81
FOUNDATION SYSTEMS	13	HOT HANDLES	81
FOUNDATION VENTS	10	HOT WATER HEATER PARTS	48
FRAME HOOK STRAPS	17	HOT WATER HEATERS	47
FROST-FREE SILLCOCKS	32	I-BEAM CONNECTORS	13
FURNACE DOORS	30	ICE MAKER TEES	45
FURNACE FILTER KITS	29	IGNITORS	26
FURNACE FILTERS	29	IMPELLOR FOR CEILING FANS	92
FURNACE RETAINERS	29	INDUCER ORIFICES	27
FURNACES	22	INSULAT. SKIRT. (RAPIDWALL)	7
GALVANIZED	43	INSULATION	18
GALVANIZED COUPLINGS	43	INTEGRATED CTRL BOARDS	27
GALVANIZED ELBOWS	43	INTERIOR DOOR HINGES	94
GALVANIZED FITTINGS	43	INTERIOR DOORS	60
GARBAGE DISP. COVERS	82	IP FLOOR PLATES	80
GARBAGE DISPOSER KITS	82	JELLY JARS	90
GARBAGE DISPOSERS	82	KITCHEN FAUCETS	75-77
GARDEN TUB FAUCET VALVES	83	KITCHEN SINK STRAINER	80
GAS GAUGES	32	KITCHEN SINKS	78
GAS PIPES	32	KNOCKER / VIEWERS	55
GATE VALVES	42	LAG BOLT WASHERS	16

INDEX

LATCHES FOR WINDOWS	95	NUT FOR IRON BOLTS	32
LATERAL HARDWARE KITS	13	NUTSETTERS	68
LATERAL STABILIZER PLATES	14	NYLON CLIPS W/ SCREWS	56
LATERAL STRUTS	13	OETIKER RINGS (CLAMPS)	45
LATIT, / LONGITUDINAL ARMS	13	OUTLETS	89
LATIT. / LONG. SYSTEM	13	OUTRIGGERS	14
LAVATORY FAUCETS	75-77	OUTSIDE CORNERS	86
LAVATORY SINKS	78	OUTSWING DOORS	57
LEAD-FREE GATE VALVES	42	OVENS	53
LIGHT BULBS	90	PACKAGED AIR COND,	21
LIGHT FIXTURES	90	PADDLE SWITCHES	89
LIGHT LENS	91	PAINTERS TAPE	67
LIGHT LENS W/ LIGHT	92	PANELING	85
LIGHT SWITCH COVERS	89	PANS FOR FOUNDATION SYS	13
LIGHT SWITCHES	89	PARKER ROLO FLARE TOOL	68
LIGHTS	89	PASSAGE LEVER LOCKSETS	55
LINE SETS FOR A/C	20	PASSAGE LOCKSETS	55
LOCK NUTS	83	PATIO ANCHOR HEADS	16
LOCKSETS	55	PATIO DOOR HANDLES	61
LONG. I-BEAM CONNECTORS	13	PATIO DOOR SCREENS	61
LONGITUDINAL KITS	13	PATIO DOORS	61
LONGITUDINAL STRUTS	13	PATIO DOOR KEY LOCK	61
LOUVERED VENT HOODS	54	PEEL & SEAL	67
LOW PRESS. GAS GAUGES	32	PEX	44-46
METAL SKIRTING BRACKETS	10	PEX ADAPTERS	44
MG1E 80% GAS FURNACES	22	PEX COUPLINGS	44
MG1E FURNACE DIAGRAM	24	PEX ELBOWS	44
MG1E PARTS LIST	25	PEX FITTINGS	44
MG1E FURNACES, SHORT	22	PEX PIPES	46
MG1E FURNACES, TALL	22	PEX PLUGS	45
MG1E FURNACE INFO	23	PEX TEES	44
MG1E ROOF JACKS	23	PEX TUBING	46
MILLER CONTROL BOARDS	27	PEX VALVES	45
MINI BLINDS	64	PIER PADS	14
MOLDING	86,87	PIPE INSULATION	18
MOTOR FOR VENT FANS	91	PIPE THREAD SEALANT	46
NAILIN DRIVE ANCHOR	88	PLASTIC SLIP NUTS	31
NON-MORTISE HINGES	56	PLASTIC TUBING CUTTERS	46
NON-PROG. THERMOSTATS	28	PLUMBING VENT	82,91,92
NORCO BOTTLE JACKS	15	PNEUMATIC DOOR CLOSERS	56
NORDYNE BLOWER MOTORS	27	PORCH FIXTURES	90
NORDYNE ORIFICES	27	PORCH LIGHTS	90
NORDYNE M1 IGNITOR	26	POWER BITS	68
NORDYNE PRESS. SWITCH	26	POWER NUTSETTERS	68

INDEX

PLASTIC SLIP NUTS	31	RETAINERS	29
PLASTIC TUBING CUTTERS	46	RINGS	45
PLUMBING VENT	82,91,92	ROD HELIX ANCHORS	16
PNEUMATIC DOOR CLOSERS	56	ROOF CAPS	93
PORCH FIXTURES	90	ROOF COATING	66
PORCH LIGHTS	90	ROOF JACKS	48
POWER BITS	68	ROOF JACKS, NORDYNE	30
POWER NUTSETTERS	68	ROSETTES W/ SCREWS	85
PRESSURE RELIEF VALVES	48	RUBBER ROLL	33
PRESSURE SWITCHES	26	RUBBER STOPPERS	82
PRIVACY LEVER LOCKSETS	55	RUBBER WASHERS	83
PRIVACY LOCKSETS	55	SCREEN FRAME	94
PURPLE PRIMER	46	SCREEN FRAME CLIPS	94
PUSH BUTTON LATCHES	56	SCREEN SPLINE	94
PUTTY TAPE	67	SCREENING	94
PVC	38-39	SCREW-IN ELEMENTS	48
PVC ADAPTERS	39	SCREWS	68
PVC BUSHINGS	39	SEALANT ADHESIVE	66
PVC CEMENT	39	SEAM BINDER	97
PVC CEMENT	46	SELF-CONT. RECEPTACLES	89
PVC COUPLINGS	38	SELF-SEALING INSULATION	18
PVC ELBOWS	38	SHARKBITE	35
PVC FITTINGS	38-39	SHARKBITE BALL VALVES	35
PVC HANGER STRAP	32	SHARKBITE COUPLINGS	35
PVC PIPE	38	SHARKBITE DROP EAR	35
PVC PLUGS	39	SHARKBITE ELBOWS	35
PVC SINK TAIL PIECE	31	SHARKBITE FEM. ADAPTERS	35
PVC TEE WYE	39	SHARKBITE FITTINGS	35
PVC TEES	39	SHARKBITE MALE ADAPTERS	35
PVC OVERFLOW DRAIN LINE	48	SHARKBITE TEES	35
QUICK CLAMPS	46	SHOE MOLDING	86,88
RANGE CORDS	54	SHORT BARS	13
RANGE HOOD FAN	91	SHOWER ARMS	76,77
RANGE HOOD FILTERS	92	SHOWER BASES	74
RANGE HOOD MOTORS	91	SHOWER DIVERTER STEMS	81
RANGE HOOD VENT	91	SHOWER DOORS	74
RANGE HOODS	92	SHOWER DRAINS	80
RANGES	53	SHOWER FAUCETS	75-77
RAPIDWALL VINYL SKIRTING	7	SHOWER HEADS	75-77
RATCHET TOOL	31	SHOWER RODS, ADJUSTABLE	84
RECEPTACLES	89	SHOWER SURROUNDS	73
REFRIGERATORS	52	SHOWERS	73,74
REPLACEMENT FILLER TEES	81	SHUTOFF VALVES	45
RETAINERS	29	SIDEWALL FAN MOTORS	91

INDEX

SILICONE	66	TRACTION MATS	14
SILLCOCK	32	TRI MOLDING	87
SINKS	78	TRIM	86,87
SKIRTING ACCESS DOOR	10	TUB / SHOWER COVERS	80
SKIRTING BRACES & STRAPS	5,10	TUB DRAINS	83
SKIRTING BRACKET	10	TUBING CUTTERS	46
SKIRTING SPIKE & NAIL	5,10	UNCASED VERTICAL A-COILS	20
SKIRTING VENT KIT	10	UNIV. THERMOCOUPLES	26
SKIRTING WIND RODS	10	US MOTORS FAN MOTORS	27
SKYLIGHTS	65	VAPOR BARRIERS	14
SLIP JOINT WASHERS	82	VENT FOR RANGE HOODS	91
SLIP NUTS, PLASTIC	31	VENT HOOD, LOUVERED	54
SMOKE ALARMS	96	VERTICAL SLIDER DOORS	57
SOCKETS	94	VINYL FLOORING	97
SPLIT BOLTS W/ NUT	16	VINYL SKIRTING (GENESIS)	6,8,9
SPRAY ADHESIVE	17	VINYL SKIRTING (RUSTIQUE)	6
SPRAY ADHESIVE	31,33,67,72	VINYL SKIRTING (VANGUARD)	9
SPRINGS FOR WINDOWS	95	VINYL SKIRTING (RAPIDWALL)	7
STAIN. STEEL GAS CONN.	26,54	VINYL WINDOWS	62
STEM AND BONNETS	81,83	WALL GUARDS	96
STEPS, WOOD	12	WASHER OUTLET BOXES	54
STORM DOOR WIND CHAINS	56	WASHERSS	51
STORM DOORS	59	WASHING MACHINE VALVE	37
STOVES	53	WASHING MACHINES	51
STRAP PROTECTORS	17	WATER HEATER AIR INLETS	48
STRAPS FOR SETUP	17	WATER HEATER DOORS	49
SURROUNDS	72,73	WATER HEATER GAS VALVES	48
SWIVEL CONNECTOR STRAPS	17	WATER HEATER PARTS	48
TAIL PIECE FOR SINKS	31	WATER HEATERS	47
TANK TO BOWL KITS	83	WAX RING WITH HORN	83
TEFLON TAPE	46	WEDGES, HARDWOOD	15
THERMALINE	34	WET-N-DRY ROOF COATING	66
THERMOCPLES, UNIVERSAL	26	WIND RODS	10
THERMOSTATS	28	WINDOW CORNER INSERTS	94
TOILET FLAPPERS	82	WINDOW LATCHES	95
TOILET PAPER ROLLER	79	WINDOW SPRINGS	95
TOILET SEATS	79	WIRE THERMOSTATS	28
TOILET SUPPLY LINE	79	WOOD STEPS,	12
TOILET TISSUE HOLDER	79	YELLOW GAS PIPE	32
TOILETS	79	YELLOW TRACER WIRE	32
TOOLS	68	ZIP TIES	27
TOUCH TOE TUB DRAINS	83		
TOWEL BAR SETS	79		
TRACER WIRE	32		



CREDIT APPLICATION FOR A BUSINESS ACCOUNT

MMHS, INC.
 3464 ANN DR
 FLUSHING, MI 48433

PHONE:(810) 867-4671
 FAX:(810) 867-4683
 mmhsinc@yahoo.com

BUSINESS CONTACT INFORMATION

Title		Date business commenced	
Company name		<input type="checkbox"/> Sole proprietorship <input type="checkbox"/> Partnership <input type="checkbox"/> Corporation <input type="checkbox"/> Other	
Phone / Fax			
E-mail			
Registered company address City, State ZIP Code			

BUSINESS AND CREDIT INFORMATION

City, State ZIP Code		Bank name:	
How long at current address'?		Primary business address City, State ZIP Code	
Phone		Phone	
Fax		Account number	
E-mail		Type of account	<input type="checkbox"/> Savings <input type="checkbox"/> Checking <input type="checkbox"/> Other

BUSINESS/TRADE REFERENCES

Company name		Phone	
Address		Fax	
City, State ZIP Code		E-mail	
Type of account		Other	
Company name		Phone	
Address		Fax	
City, State ZIP Code		E-mail	
Type of account		Other	
Company name		Phone	
Address		Fax	
City, State ZIP Code		E-mail	
Type of account	<input type="checkbox"/> Savings <input type="checkbox"/> Checking <input type="checkbox"/> Other	Other	

AGREEMENT

1. All invoices are to be paid 3% 15 NET 30 days from the date of the Invoice.
2. Claims **arising** from invoices must be made within seven working days.
3. By submitting this application, you authorize MMHS, INC. to make inquiries into the banking and business/trade references that you have **supplied**.

SIGNATURES

Signature		Signature	
Name and Title		Name and Title	
Date		Date	