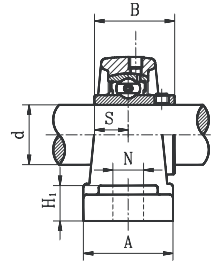
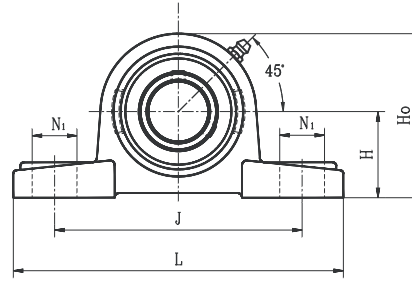


PILLOW BLOCKS

UCP STANDARD DUTY SET SCREW LOCKING TYPE



- Cast iron housing - solid base.
- Wide inner ring bearing

Unit No.	Shaft Dia. d		Dimension (in) (mm)										Bolt Size (in)	Bearing No.	Housing No.	Weight (lb)
	(in.)	(mm)	H	L	J	A	N	N ₁	H ₁	H ₀	S	B				
UCP201S 201-8S 202S 202-10S 203S 203-11S	1/2 5/8 11/16	12 15 17	1-3/16 30.2	4-15/16 125	3-5/8 92	1-1/4 32	15/32 12	5/8 16	1/2 13	2-1/4 57	7/16 11.5	1-5/64 27.4	3/8	UC201 201-8S 202S 202-10S 203S 203-11S	P203S	1.32
UCP201 201-8 202 202-10 203 203-11	1/2 5/8 11/16	12 15 17	1-3/16 30.2	5 127	3-3/4 96	1-15/32 37	1/2 13	1/2 13	9/16 14	2-13/32 60.7	15/32 12.7	1-7/32 31	3.8	UC201 201-8 202 202-10 203 203-11	P203	1.71
UCP204-12 204	3/4	20	1-5/16 33.3	5 127	3-3/4 96	1-15/32 37	1/2 13	5/8 16	9/16 14	2-1/2 63.8	15/32 12.7	1-7/32 31	3/8	UC204-12 204	P204	1.71
UCP205-14 205-15 205 205-16	7/8 15/16 1	25	1-7/16 36.5	5-1/2 140	4-1/8 105	1-1/2 38	1/2 13	3/4 19	19/32 15	2-3/4 69.5	9/16 14.3	1-11/32 34	1/2	UC205-14 205-15 205 205-16	P205	2.10
UCP206-18 206 206-19 206-20	1-1/8 1-3/16 1-1/4	30	1-11/16 42.9	6-5/16 160	4-3/4 121	1-23/32 44	9/16 14	3/4 19	5/8 16	3-7/32 82	5/8 15.9	1-1/2 38.1	1/2	UC206-18 206 206-19 206-20	P206	3.24
UCP207-20 207-21 207-22 207 207-23	1-1/4 1-5/16 1-3/8 1-7/16	35	1-7/8 47.6	6-9/16 167	5 127	1-7/8 48	19/32 15	3/4 19	21/32 17	3-5/8 92	11/16 17.5	1-11/16 42.9	1/2	UC207-20 207-21 207-22 207 207-23	P207	4.05
UCP208-24 208-25 208	1-1/2 1-9/16	40	1-15/16 49.2	7-3/32 180	5-3/8 136	2-1/18 52	19/32 15	13/16 21	23/32 18	3-27/32 98	3/4 19	1-15/16 49.2	1/2	UC208-24 208-25 208	P208	5.15
UCP209-26 209-27 209-28 209	1-5/8 1-11/16 1-3/4	45	2-1/8 54	7-7/16 189	5-3/4 146	2-1/8 54	19/32 15	13/16 21	25/32 20	4-5/32 105.5	3/4 19	1-15/16 49.2	1/2	UC209-26 209-27 209-28 209	P209	6.16
UCP210-30 210-31 210	1-7/8 1-15/16	50	2-1/4 57.2	8-1/32 204	6-1/4 159	2-1/4 57	3/4 19	7/8 22	13/16 21	4-13/32 112.2	3/4 19	2-1/32 51.6	5/8	UC210-30 210-31 210	P210	7.11
UCP211-32 211-34 211 211-35	2 2-1/8 2-3/16	55	2-1/2 63.5	8-17/32 217	6-25/32 172	2-3/8 60	3/4 19	7/8 22	7/8 22	4-29/32 124.5	7/8 22.2	2-3/16 55.6	5/8	UC211-32 211-34 211 211-35	P211	8.60
UCP212-36 212 212-38 212-39	2-1/4 2-3/8 2-7/16	60	2-3/4 69.9	9-3/8 238	7-5/16 186	2-19/32 66	3/4 19	1 25	15/16 24	5-13/32 137	1 25.4	2-9/16 65.1	5/8	UC212-36 212 212-38 212-39	P212	12.12
UCP213-40 213	2-1/2	65	3 76.2	10-5/16 262	8 203	2-3/4 70	29/32 23	1-3/16 29	1-1/32 26	5-7/8 149	1 25.4	2-9/16 65.1	3/4	UC213-40 213	P213	12.34
UCP214-44 214	2-3/4	70	3-1/8 79.4	10-15/32 266	8-9/32 210	2-27/32 72	29/32 23	1-5/32 29	1-1/16 27	6-3/32 155	1-3/16 30.2	2-15/16 74.6	3/4	UC214-44 214	P214	14.56
UCP215 215-48	3	75	3-1/4 82.6	10-25/32 274	8-17/32 217	2-29/32 74	1 25	1/5/32 29	1/3/32 28	6-3/8 161.6	1-5/16 33.3	3-1/16 77.8	3/4	UC215 215-48	P215	16.09
UCP216		80	3-1/2 88.9	11-1/2 292	9-1/8 232	3-1/16 78	1 25	1-3/16 30	1-3/16 30	6-27/32 174	1-5/16 33.3	3-1/4 82.6	3/4	UC216	P216	18.29
UCP217-52 217	3-1/4	85	3-3/4 95.2	12-7/32 310	9-23/32 247	3-9/32 83	1 25	1-3/16 30	1-1/4 32	7-5/16 186	1-11/32 34.1	3-3/8 85.7	3/4	UC217-52 217	P217	23.76
UCP218-56 218	3-1/2	90	4 101.6	12-27/32 326	10-5/16 262	3-15/32 88	1-1/16 27	1-3/16 30	1-5/16 33	7-25/32 198	1-9/16 39.7	3-3/4 96	3/4	UC218-56 218	P218	28.7

* Dual seal standard. Triple lip seal (R3 suffix) optional.

Intech Bearing Inc., 4955 Gulf Fwy., Houston, TX 77023

www.intechbearing.com, Toll-Free: 800.327.7424, Fax: 713.926.3110