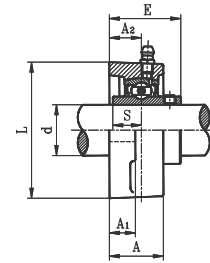
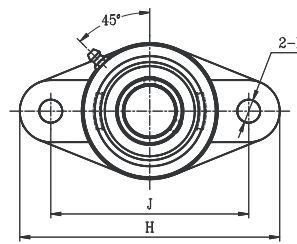


TWO BOLT FLANGE UNITS

UCFL STANDARD DUTY SET SCREW LOCKING TYPE



- Cast iron housing
- Wide inner ring bearing

Unit No.	Shaft Dia. d		Dimension (in) (mm)									Bolt Size (in)	Bearing No.	Housing No.	Weight (lb)
	(in.)	(mm)	H	J	L	A ₂	A ₁	A	E	N	S				
UCFL201S 201-8S 202S 202-10S 203S 203-11S	1/2 5/8 11/16	12 15 17	3-29/32 99	3 76.5	2-1/4 57	19/32 15	7/16 11	1 24.5	1-7/32 30.9	7/16 11.5	7/16 11.5	3/8	UC201S 201-8S 202S 202-10S 203S 203-11S	FL203	0.99
UCFL201 201-8 202 202-10 203 203-11 204-12 204	1/2 5/8 11/16 3/4	12 15 17 20	4-7/16 113	3-9/16 90.0	2-3/8 60	19/32 15	7/16 11	1 25.5	1-5/16 33.3	7/16 11.5	1/2 12.7	3/8	UC201 201-8 202 202-10 203 203-11 204-12 204	FL204	1.12
UCFL205-14 205-15 205 205-16	7/8 15/16 1	25	5-1/8 130	3-29/32 99.0	2-11/16 68	5/8 16	17/32 13	1-1/16 27.0	1-13/32 35.7	7/16 11.5	9/16 14.3	3/8	UC205-14 205-15 205 205-16	FL205	1.32
UCFL206-18 206 206-19 206-20	1-1/8 1-3/16 1-1/4	30	5-27/32 148	4-5/8 117.0	3-5/32 80	23/32 18	17/32 13	1-7/32 31.0	1-19/32 40.2	7/16 11.5	5/8 15.9	3/8	UC206-18 206 206-19 206-20	FL206	1.98
UCFL207-20 207-21 207-22 207 207-23	1-1/4 1-5/16 1-3/8 1-7/16	35	6-11/32 161	5-1/8 130.0	3-9/16 90	3/4 19	9/16 14	1-11/32 34.0	1-3/4 44.4	9/16 14.0	11/16 17.5	1/2	UC207-20 207-21 207-22 207 207-23	FL207	2.84
UCFL208-24 208-25 208	1-1/2 1-9/16	40	6-7/8 175	5-11/16 144.0	3-15/16 100	27/32 21	9/16 14	1-7/16 36.0	2-1/32 51.2	9/16 14.0	3/4 19.0	1/2	UC208-24 208-25 208	FL208	3.30
UCFL209-26 209-27 209-28 209	1-5/8 1-11/16 1-3/4	45	7-13/32 188	5-27/32 148.0	4-1/4 108	7/8 22	5/8 16	1-1/2 38.0	2-1/16 52.2	23/32 18.0	3/4 19.0	5/8	UC209-26 209-27 209-28 209	FL209	4.18
UCFL210-30 210-31 210 210-32	1-7/8 1-15/16 2	50	7-3/4 197	6-3/16 157.0	4-17/32 115	7/8 22	5/8 16	1-19/32 40.0	2-5/32 54.6	23/32 18.0	3/4 19.0	5/8	UC210-30 210-31 210 210-32	FL210	4.85
UCFL211-32 211-34 211 211-35	2 2-1/8 2-3/16	55	8-13/16 224	7-1/4 184.0	5-1/8 130	1 25	23/32 18	1-11/16 43.0	2-5/16 58.4	23/32 18.0	7/8 22.2	5/8	UC211-32 211-34 211 211-35	FL211	6.83
UCFL212-36 212 212-38 212-39	2-1/4 2-3/8 2-7/16	60	9-27/32 250	7-31/32 202.0	5-1/2 140	1-5/32 29	23/32 18	1-29/32 48.0	2-23/32 68.7	23/32 18.0	1 25.4	5/8	UC212-36 212 212-38 212-39	FL212	8.82
UCFL213-40 213	2-1/2	65	10-5/32 258	8-9/32 210.0	6-3/32 155	1-3/16 30	25/32 20	1-31/32 50.0	2-3/4 69.7	29/32 23.0	1 25.4	3/4	UC213-40 213	FL213	11.20
UCFL214-44 214	2-3/4	70	10-7/16 265	8-1/2 216.0	6-5/16 160	1-7/32 31	25/32 20	2-1/8 54.0	2-31/32 75.4	29/32 23.0	1-3/16 30.2	3/4	UC214-44 214	FL214	12.34
UCFL215-47 215 215-48	2-15/16 3	75	10-27/32 275	8-7/8 225.0	6-15/32 164	1-11/32 34	7/8 22	2-3/16 55.0	3-3/32 78.5	29/32 23.0	1-5/16 33.3	3/4	UC215-47 215 215-48	FL215	13.66
UCFL216		80	11-13/32 290	9-3/16 233.0	7-3/32 180	1-11/32 34	7/8 22	2-9/32 58.0	3-9/32 83.3	1 25.0	1-5/16 33.3	7/8	UC216	FL216	17.19
UCFL217-52 217	3-1/4	85	12 305	9-25/32 248.0	7-1/2 190	1-13/32 36	7/8 22	2-15/32 63.0	3-7/16 87.6	1 25.0	1-11/32 34.1	7/8	UC217-52 217	FL217	21.60
UCFL218-56 218	3-1/2	90	12-19/32 320	10-7/16 265.0	8-1/16 205	1-19/32 40	29/32 23	2-11/16 68.0	3-13/16 96.3	1 25.0	1-9/16 39.7	7/8	UC218-56 218	FL218	27.33

* Dual seal standard. Triple lip seal (R3 suffix) optional.

Intech Bearing, Inc., 4955 Gulf Fwy., Houston, TX 77023

Ph.: 800.327.7424, Fax: 713.926.3110

www.intechbearing.com