



K I F A

# KOREA FAR INFRARED ASSOCIATION

## KOREA INSTITUTE OF FAR INFRARED APPLIED ESTIMATION

4, Baekjegobun-ro 37-gil, Songpa-Gu, Seoul, Korea <http://www.kfir.or.kr> TEL 82-2-2203-6037 2203-6061



### CERTIFICATE OF TESTING RESULT

Serial No. of Issue : KFIA-218  
 Name of Applicant : Lee Sung Jin [Raycop Korea Inc.]  
 Address of Applicant : 450 Cheongneungdae-ro, Namdong-Gu, Incheon, Korea  
 Date of Receipt : 5. 25. 2018  
 Name of Test Sample : RPC-100

### TEST RESULTS

Test Item	Early Conc. (CFU/ml)	After 3 seconds (CFU/ml)	Reduction Rate Of Bacteria(%)
A Bactericidal Test for <i>Escherichia coli</i>	8.6×10 <sup>2</sup>	< 1	99.9
A Bactericidal Test for <i>Pseudomonas aeruginosa</i>	1.4×10 <sup>3</sup>	< 1	99.9
A Bactericidal Test for <i>Staphylococcus aureus</i>	1.3×10 <sup>3</sup>	< 1	99.9

Note) 1) The bacteria were spread on a TSA medium.  
 2) After dividing the TSA medium where the spreading bacteria was placed into 3 equal parts, operate Bedding Vacuum Cleaner called RPC-100 to the TSA medium for one second each. The working time was 3 seconds.  
 3) A comparison of results of the two test(before & after) were made to determine the amount of bacteria that was reduced with the use of the sample.  
 4) During testing the lab room temperature was maintained between 24°C and 25°C and the humidity level was maintained between 35% and 40%. End.

- 1) Test method : Client Offer (Bactericidal Test)
- 2) Bacteria to be used for the tests  
*Escherichia coli* ATCC 25922  
*Pseudomonas aeruginosa* ATCC 15442  
*Staphylococcus aureus* ATCC 6538
- 3) Refer to the Enclosed (4-1, 4-2, 4-3, 4-4)
- 4) Usage : Quality control

\* This certificate of testing result shall be used within the purpose of its defined usage.

6                      8                      2018

month                      day                      year

Signed

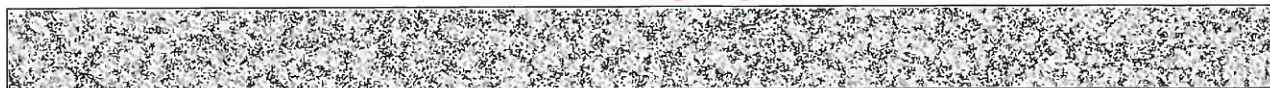
*Choi T. S.*

**COPY**

The director of Korea Institute of  
Far Infrared Applied Estimation



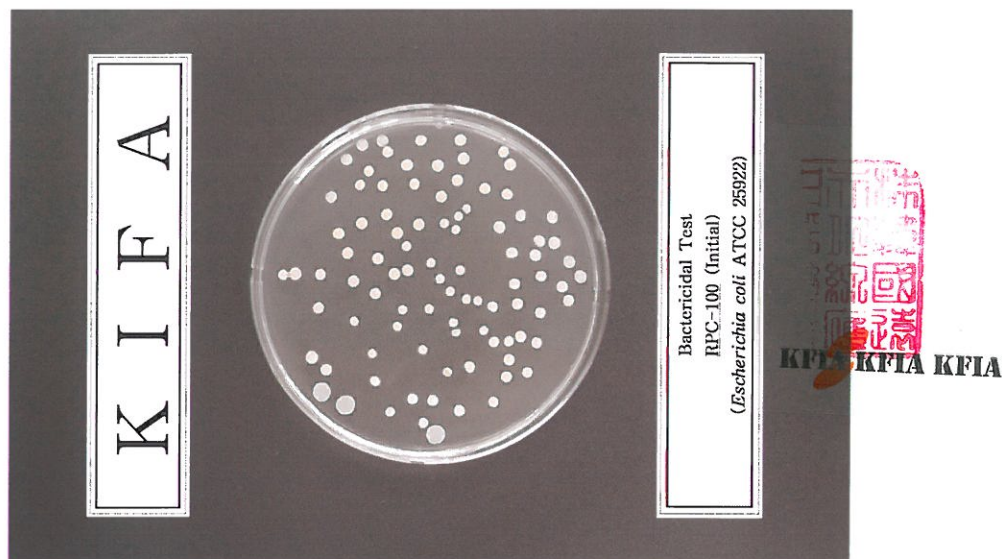
G4B(www.g4b.go.kr)진위확인코드 : t3YFzBWSIZ8=



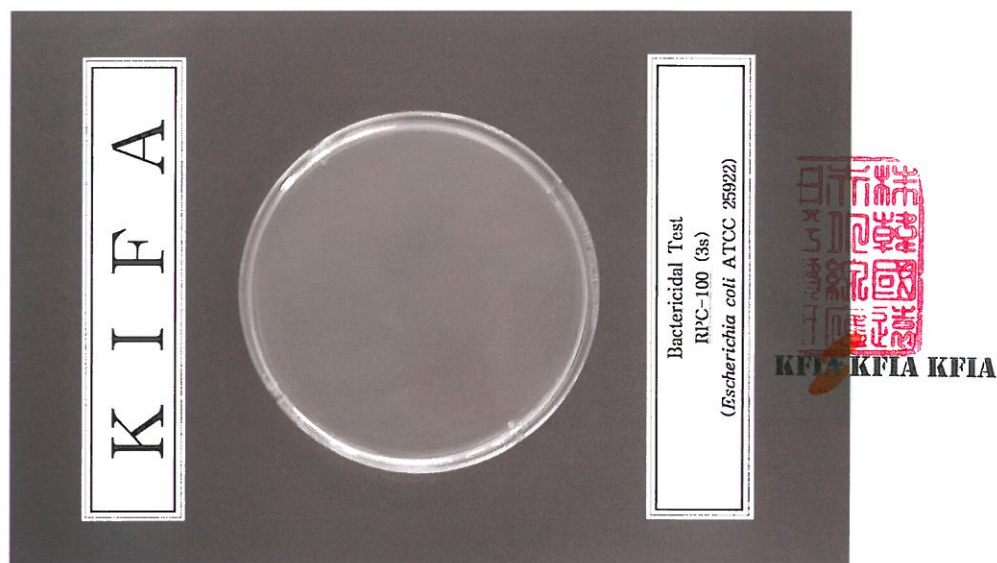
# KIFA

Serial No. of Issue : KFA-218

Name of Test Sample : RPC-100



<Fig. 1>



<Fig. 2>

4 - 1

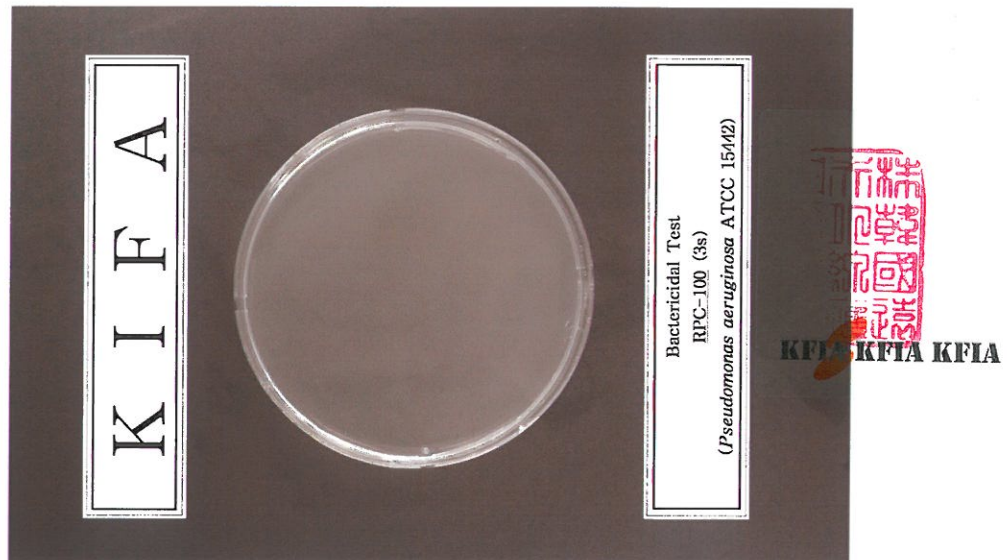
# KIFA

Serial No. of Issue : KFIA-218

Name of Test Sample : RPC-100

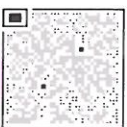


< Fig. 3 >



< Fig. 4 >

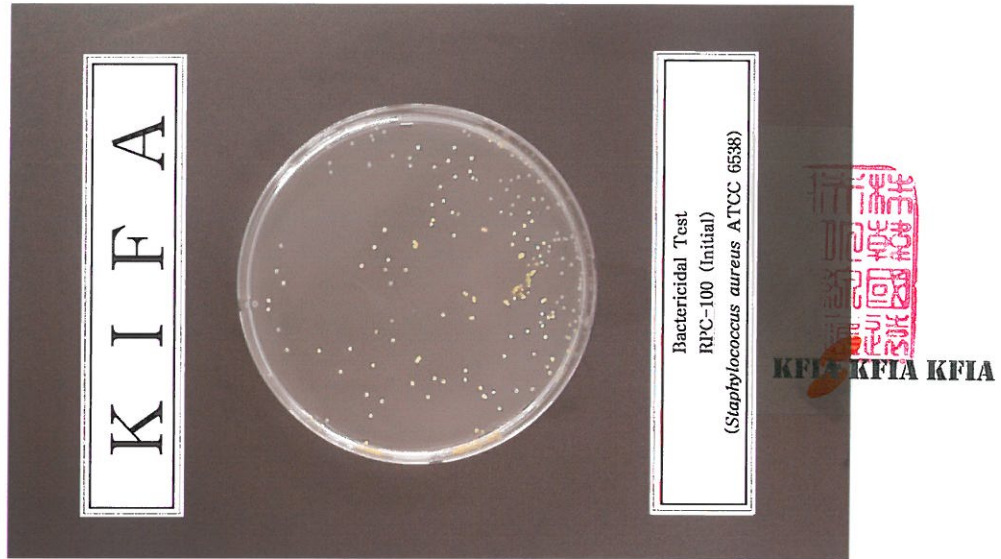
4 - 2



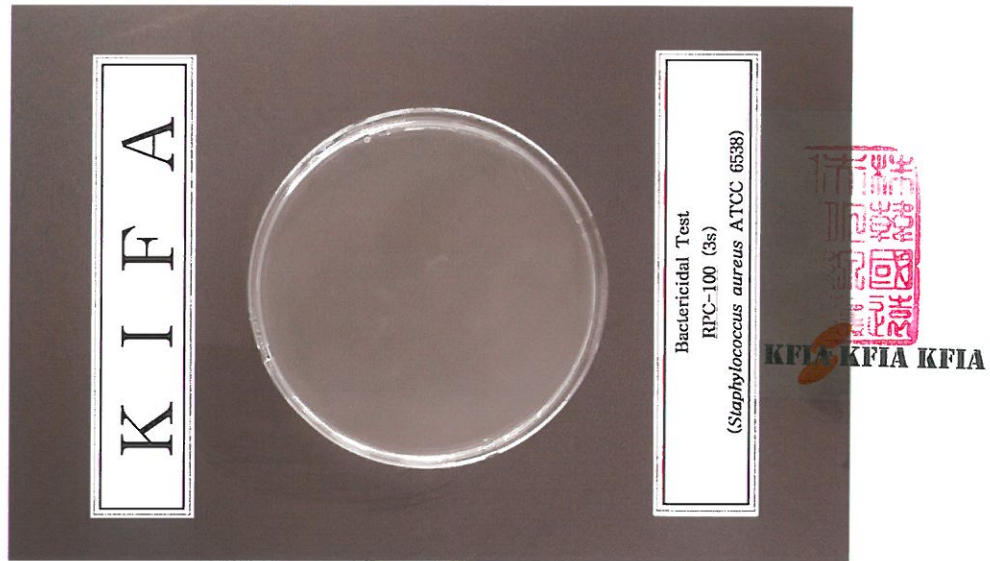
# KIFA

Serial No. of Issue : KFIA-218

Name of Test Sample : RPC-100



<Fig. 5>



<Fig. 6>

4 - 3



G4B([www.g4b.go.kr](http://www.g4b.go.kr))진위확인코드 : t3YFzBWSIZ8=



# KIFA

Serial No. of Issue : KFA-218  
Name of Test Sample : RPC-100

---



<Fig. 7>