



RPHA 91

Owner's Manual

Europe

1 rue Benjamin Silliman 67116
Reichstett-France
Tel. +33 (0)3 90 22 74 00
Fax. +33 (0)3 90 20 09 12
If you have any questions,
please email us at info@hjc-europe.com

America

511 S. Harbor Blvd. #V, La Habra,
California 90631
Tel. 562-407-2186
Fax. 562-802-7706
If you have any questions,
please e-mail us at info@hjchemets.com

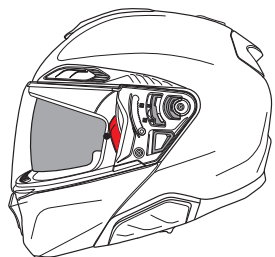
www.hjchemets.com
HJC Corp.



REV.00/US

▲ WARNING

For your safety, it is important that you completely read the owner's manual and all warning labels.



RPHA 91



PIM EVO Shell



Removable and washable interior



Advanced Channeling Ventilation System



Interchangeable cheek pads throughout all sizes



Pinlock ready HJ-37 visor(Shield)



Double D-ring



Provides 99% UV protection



DOT APPROVED



HJ-V12 Internal sunshield



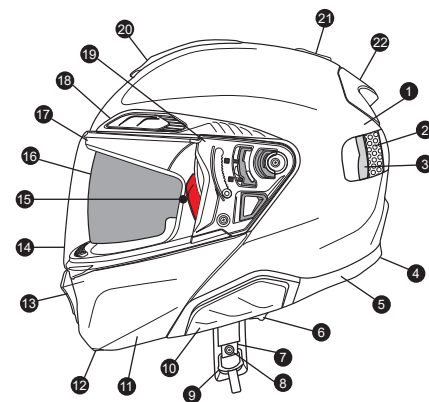
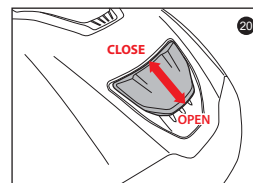
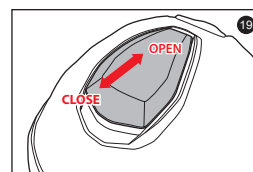
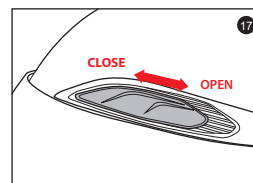
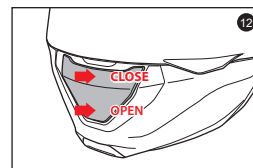
Smart HJC 21B & 50B Install ready



Anti-fog sunshield

※ Please visit www.hjchelmets.com for more information about HJC helmets.

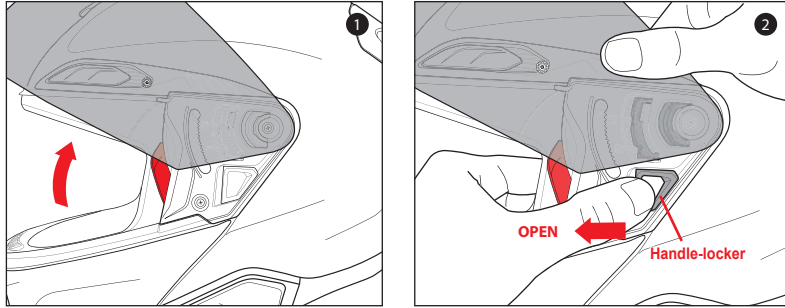
Specifications



- | | | |
|--------------------------------|-------------------------|----------------------------------|
| 1. Outer shell | 8. Chin strap snap | 15. Anti fog lens pins |
| 2. Impact absorbent liner(EPS) | 9. Double "D" ring | 16. HJ-V12 Sun shield |
| 3. Comfort liner | 10. Bluetooth UI cover | 17. Eyeport gasket |
| 4. Bluetooth cover | 11. Modular chin bar | 18. Forehead vents |
| 5. Rubber edge trim | 12. Chin bar lever | 19. Visor(Shield) ratchet |
| 6. Sun shield lever | 13. Front chin vent | 20. Top vent |
| 7. Chin strap | 14. HJ-37 Visor(Shield) | 21. Rear venturi exhausts |
| | | 22. Rear exhaust venturi spoiler |

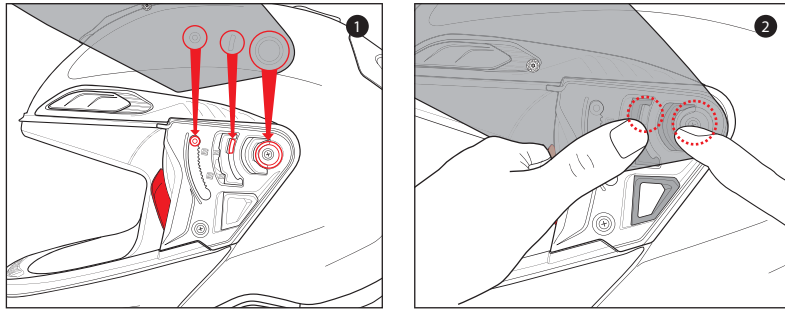
Visor (Shield) Removal

1. Open visor(shield) to the maximum open position.
2. Pull the handle-locker to the open position, then pull out the visor(shield) from ratchet mechanism.



Visor (Shield) Installation

1. Align and insert the top of the visor(shield) guide into the plate-gear guide.
2. With the guides properly aligned, press the lower section of the visor(shield) into the plate-gear mechanism. The locking tab should pop into position, locking the visor(shield) into place.

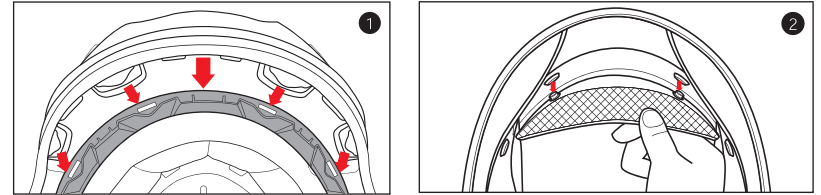


Warning!

Always check to make sure helmet pads are installed before using the helmet. A helmet with missing or improperly installed pads may increase your risk of serious injury or death in an accident.

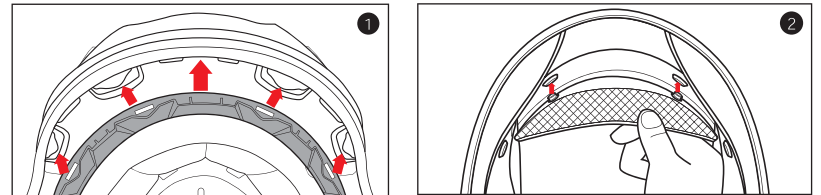
Crown Pad Removal

1. Grasp the crown pad fabric as close as possible to its plastic base and pull/pry away from the helmet. Notice how the crown pad plastic section aligns with the shell plastic sleeve. This will help orient you with the reinstallation.
2. Repeat same at rear.



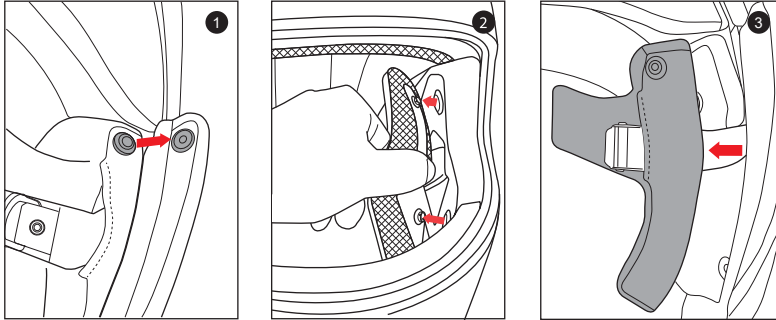
Crown Pad Installation

1. Install the front section first by aligning the plastic shell base and the crown pad plastic sleeve, ensuring that the center and side holes are properly aligned. Press the crown pad plastic sleeve (center portion) into the center of the channel which is built into the plastic shell base, working your way outward to each side.
2. Align and snap the two rear snaps into place.



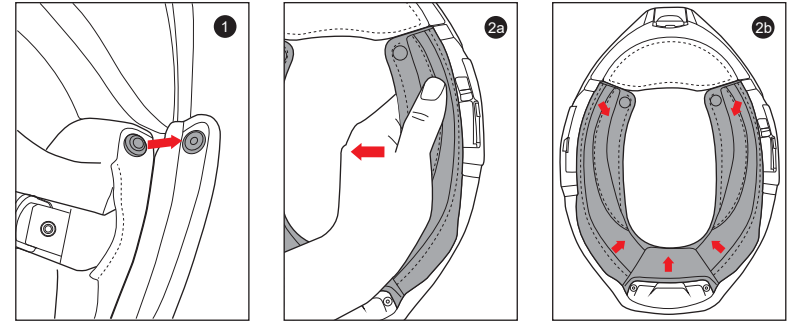
Cheek Pad Removal

1. Remove Snap between the Cheek pad and neck roll.
2. Gently pry the cheek pad away from the interior, releasing the snaps.
3. Grasp the cheek pad near its center and gently pull it free from the chin strap.



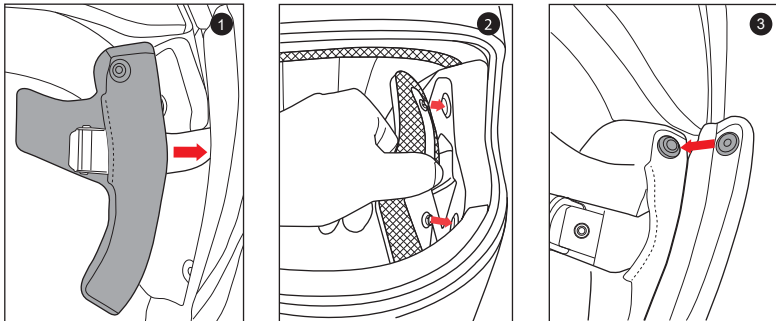
Neck Roll Removal

1. Remove Snap between the Cheek pad and neck roll.
2. Pull out the Neck roll to remove.



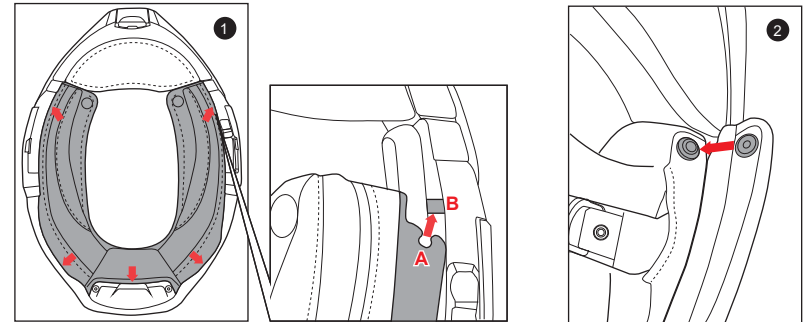
Cheek Pad Installation

1. Feed the chin strap through the opening in the cheek pad.
2. Clip the cheek pad's 3 small male snaps to the 3 female snaps fixed on the shell interior.
3. Install Snap between Cheek pad and neck roll.



Neck Roll Installation

1. Assemble the neck roll plastic plate between the shell and the EPS.
2. Install Snap between Cheek pad and neck roll.

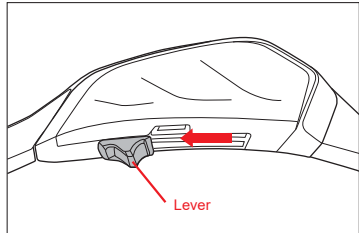


※ Slide tab 'A' from the cheek pad into the holder 'B'.
(Repeat same on opposite side)

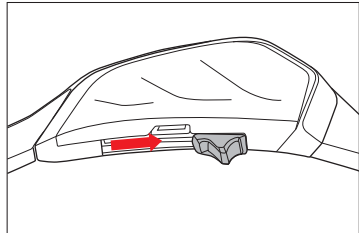
Warning!

- Try not to operate the sun shield while riding as this may impair your vision and may lead to an accident.
- DO NOT pull on the sun shield when it is already down. The sun shield may be ejected and this will increase the risk of serious injury or death in the event of an accident.
- DO NOT attempt to adjust the sun shield itself with your hands. Always use the sun shield lever.
- DO NOT use sun shield at night time. The sun shield is only for day time use. The sun shield does not provide eye protection. When you use the sun shield be sure that the clear visor(shield) is also in closed position.

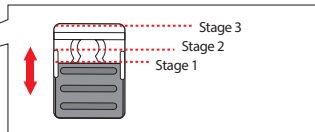
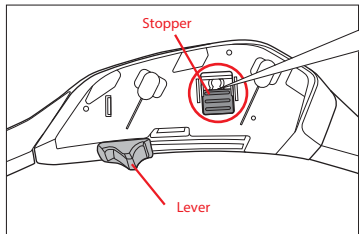
Sun shield Operation



Above illustration shows raised sun shield position.



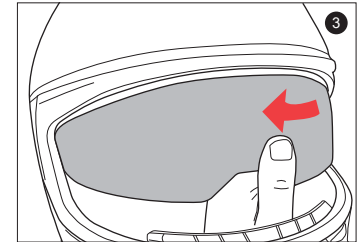
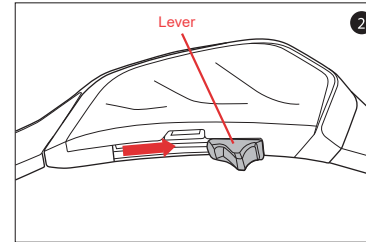
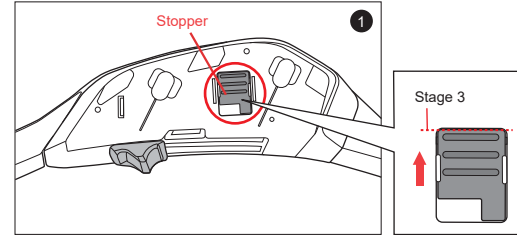
Above illustration shows lowered sun shield position.



There are three positions for the sun shield sliding lever.
Stage 1 - Standard position
Stage 2 - Lower position
Stage 3 - Lowest position

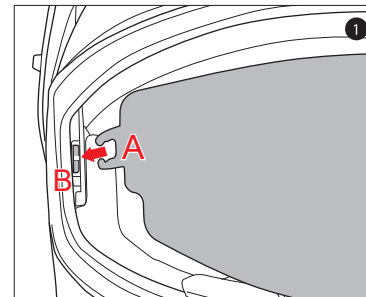
Sun shield Removal

1. Place the stopper in stage 3.
2. Push the sun shield lever in the direction of the arrow to lower the sun shield as much as possible.
3. Gently pull one side of the sun shield as arrow indicates (repeat same for other side).



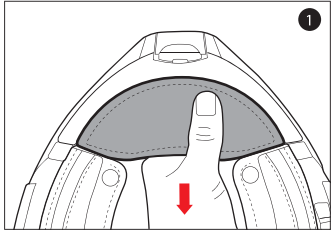
Sun shield Installation

1. Insert sun shield tab 'A' into 'B' position.(Repeat same on opposite side)



※ When installing the sun shield, be sure to have it slided behind the tap 'B' holder.

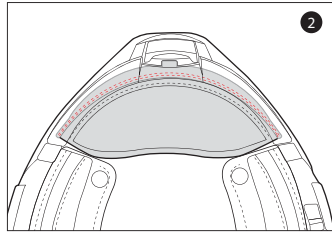
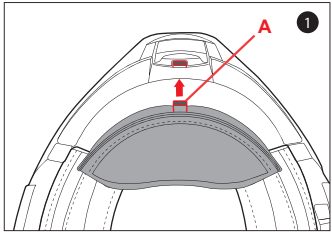
Chin Curtain Removal



1. Grasp the chin curtain fabric at the bottom corners and gently pull the sleeve down and away from the chin bar.

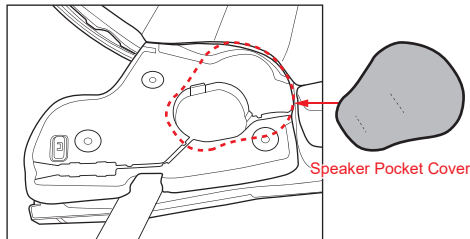
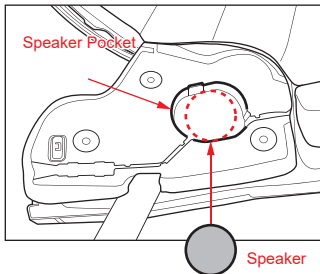
Chin Curtain Installation

1. Push and insert the A part of the Chin curtain into the Chin bar groove.
2. Align the chin curtain groove with the protrusion of the chin curtain and press it in.



How to install speaker pocket cover

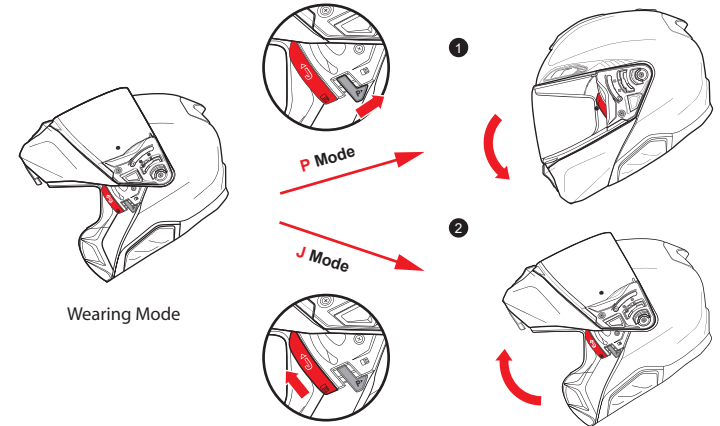
If you install communication system speakers, please do not use the speaker pocket cover.



Wearing Mode Operation

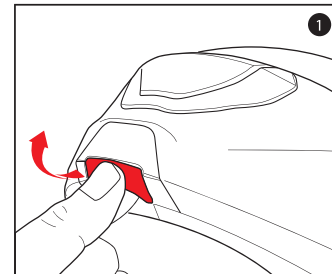
※ Helmet can be put on and removed easily when both chin bar and visor(shield) are in the open position.

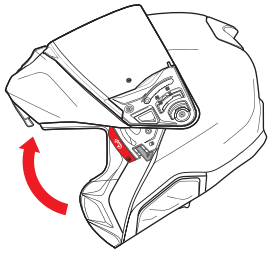
1. When operating the chinbar in the direction of the arrow in the wearing mode, it becomes P mode (chin Bar close state).
2. When operating the chinbar visor(shield) in the direction of the arrow in the wearing mode, it becomes the J mode (Chin bar open state).



Opening Chin Bar

1. To open the chin bar, simply pull the lever forward and push the entire bar upward.





2. The chin bar is in the full open position when you hear "click" sound.

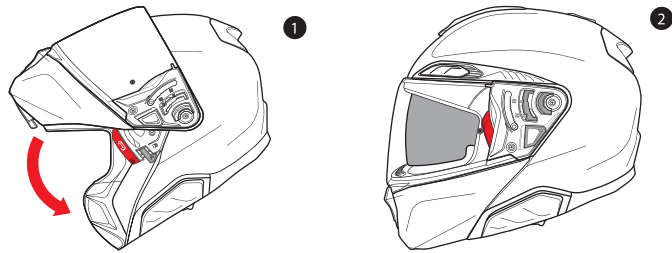
Warning!

To maximize helmet's ability to protect, we highly recommend to ride with the chin bar in closed position. In the event a rider rides with the chin bar open, there is an increased risk of injury to the frontal area. Do not raise or lower the chin bar while riding. This may interrupt rider's ability to control the motorcycle and may lead to an accident. Please use care when opening or closing the chin bar as it may scratch the helmet. Damage caused by this is not subject to manufacturer's warranty. (* Do not disassemble.)

Closing Chin Bar

Warning!

When the shield is open and the chin bar is raised and lowered to a lock position, the shield may not be in a latched position with the chin bar. Before riding, please make sure that the shield is latched with the chin bar securely. (Center closure system)



Pull the chin bar downward to completely cover your face and chin. Listen for "click" sound to ensure that the chin bar has locked into its full closed position.

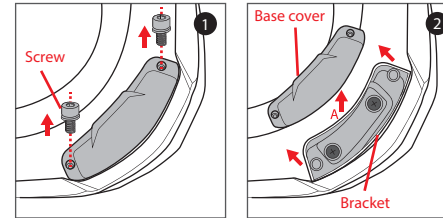
HJC Intercom Placement Guide

Mounting the Intercom

Unscrew and remove the base cover at the back of the helmet to begin mounting process of the intercom. Please refer to the manual of the current intercom you are using for directions on mounting and unmounting the intercom unit.

Base Cover Detachment

1. Remove the screws from the base cover. (picture1)
2. While lifting the base cover(direction A) detach it by pushing toward direction B. (Picture 2)

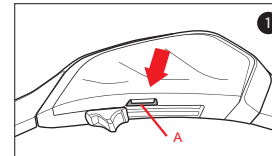


Mounting the Base Cover

Push the base cover underneath the gasket at the bottom of the helmet until the base cover and the bracket screw holes match. Using the screw, fixate the base cover onto the helmet.

Bluetooth UI Cover Detachment

1. Push the Bluetooth UI cover in the direction of the arrow while pressing down on A.



Mounting the Bluetooth UI Cover

1. After aligning the hook of the Bluetooth UI cover with the groove of the body, and push and attach.

