



RPHA 31

Owner's Manual

Europe

1 rue Benjamin Silliman 67116
Reichstett-France
Tel. +33 (0)3 90 22 74 00
Fax. +33 (0)3 90 20 09 12
If you have any questions,
please email us at info@hjc-europe.com

America

511 S. Harbor Blvd. #V, La Habra,
California 90631
Tel. 562-407-2186
Fax. 562-802-7706
If you have any questions,
please e-mail us at info@hjchelmets.com

www.hjchelmets.com
HJC Corp.

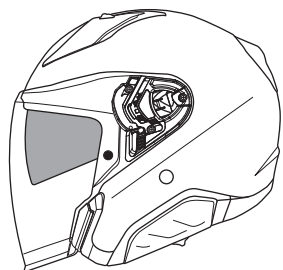


REV.01/US



▲ WARNING

For your safety, it is important that you completely read the owner's manual and all warning labels.



RPHA 31



PIM EVO Shell



Advanced Channeling Ventilation System



Pinlock ready HJ-39 visor(shield)



Provides 99% UV protection



HJ-V12 Internal sunshield



Anti-fog sunshield



Removable and washable interior



Interchangeable cheek pads throughout all sizes



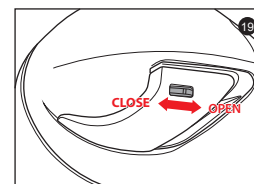
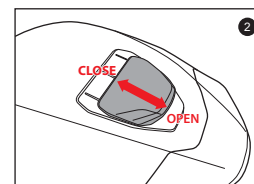
Double D-ring



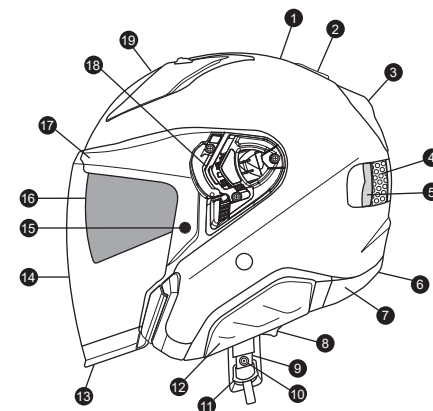
DOT APPROVED



Smart HJC 21B & 50B Install ready



Specifications



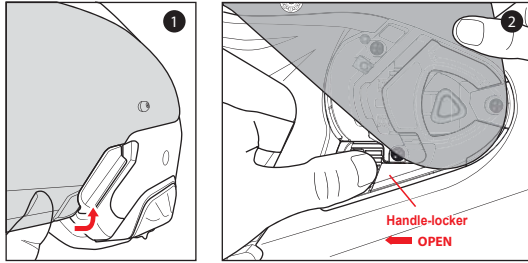
- 1. Outer shell
- 2. Rear venturi exhausts
- 3. Rear exhaust venturi spoiler
- 4. Impact absorbent liner(EPS)
- 5. Comfort liner
- 6. Bluetooth cover
- 7. Rubber edge trim
- 8. Sun shield lever
- 9. Chin strap
- 10. Chin strap snap
- 11. Double "D" ring
- 12. Bluetooth UI cover

- 13. Visor deflector
- 14. HJ-39 Visor(Shield)
- 15. Anti fog lens pins
- 16. HJ-V12 Sun shield
- 17. Eyeport gasket
- 18. Visor(Shield) ratchet
- 19. Top vents

※ Please visit www.hjchelmets.com for more information about HJC helmets.

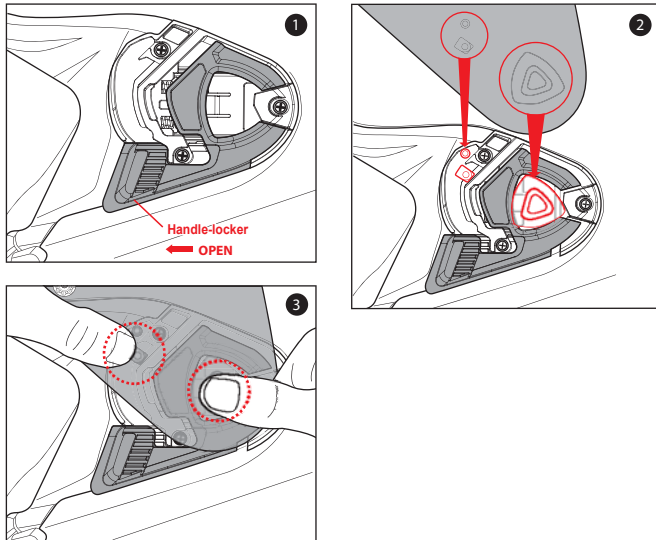
Visor(Shield) Removal

1. After pushing the lower left part of the visor(shield) outward, lift the visor(shield) to the top.
2. Pull the handle-locker to the open position, then pull out the visor(shield) from ratchet mechanism.



Visor(Shield) Installation

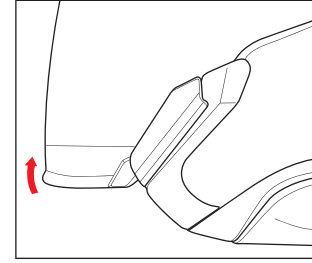
1. Ensure that the handle-locker is in the open position.
2. Align and insert the top of the visor(shield) guide into the plate-gear guide.
3. With the guides properly aligned, press the lower section of the visor(shield) into the plate-gear mechanism. The locking tab should pop into position, locking the visor(shield) into place.



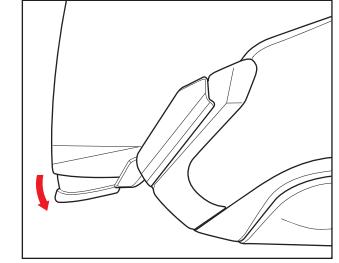
Visor(Shield) Deflector Operation

When lowered, the Visor(Shield) Deflector reduces the wind coming under the chin.

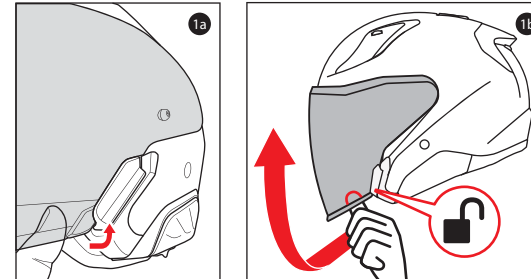
Visor(Shield) Deflector Raised Position



Visor(Shield) Deflector Lowered Position



Visor(Shield) Operation



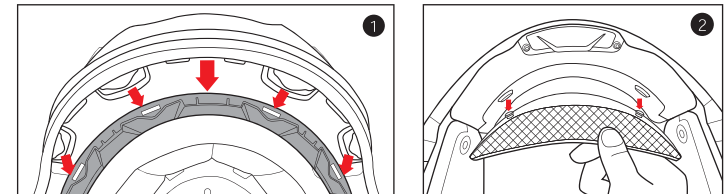
After pushing the lower part of the visor (shield) outward, lift the visor to the top.

Warning!

Always check to make sure helmet pads are installed before using the helmet. A helmet with missing or improperly installed pads may increase your risk of serious injury or death in an accident.

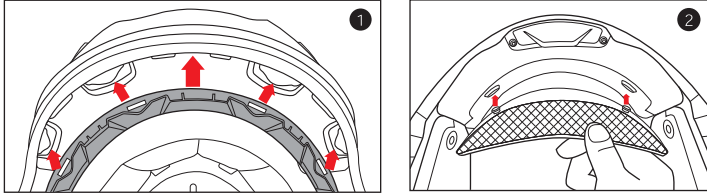
Crown Pad Removal

1. Grasp the crown pad fabric as close as possible to its plastic base and pull/pry away from the helmet. Notice how the crown pad plastic section aligns with the shell plastic sleeve. This will help orient you with the reinstallation.
2. Repeat same at rear.



Crown Pad Installation

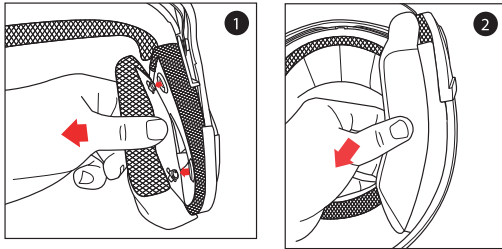
1. Install the front section first by aligning the plastic shell base and the crown pad plastic sleeve, ensuring that the center and side holes are properly aligned. Press the crown pad plastic sleeve (center portion) into the center of the channel which is built into the plastic shell base, working your way outward to each side.
2. Align and snap the two rear snaps into place.



Cheek Pad Removal

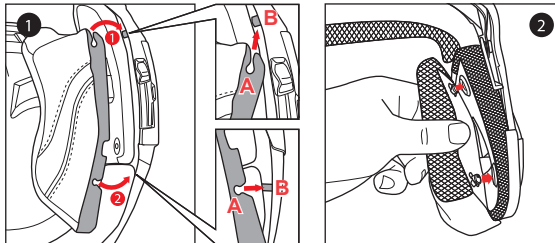
There are 3 snaps holding the cheek pad in place.

1. Gently pry the cheek pad away from the interior, releasing the snaps.
2. To remove, gently pull the center of the cheek pad.



Cheek Pad Installation

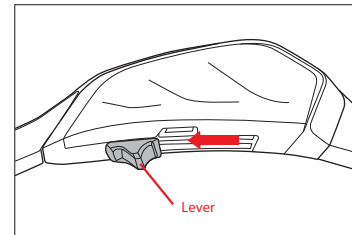
1. Align and fully slide the cheek pad plastic plate between shell and EPS.
2. Clip the cheek pad's 3 small male snaps to the 3 female snaps fixed on the shell interior.



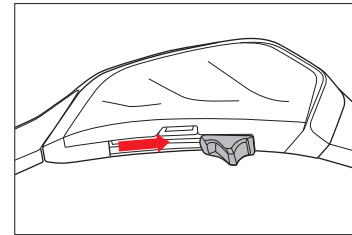
Warning!

- Try not to operate the sun shield while riding as this may impair your vision and may lead to an accident.
- DO NOT pull on the sun shield when it is already down. The sun shield may be ejected and this will increase the risk of serious injury or death in the event of an accident.
- DO NOT attempt to adjust the sun shield itself with your hands. Always use the sun shield lever.
- DO NOT use sun shield at night time. The sun shield is only for day time use. The sun shield does not provide eye protection. When you use the sun shield be sure that the clear visor(shield) is also in closed position.

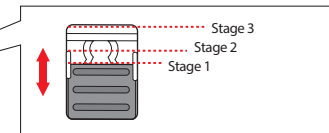
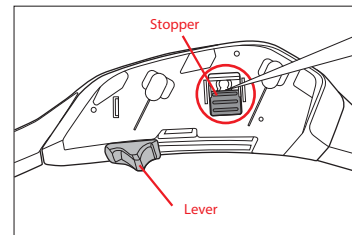
Sun shield Operation



Above illustration shows raised sun shield position.



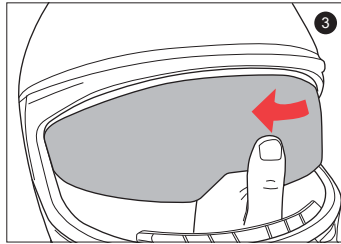
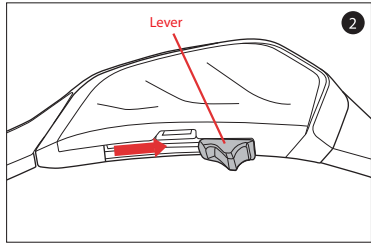
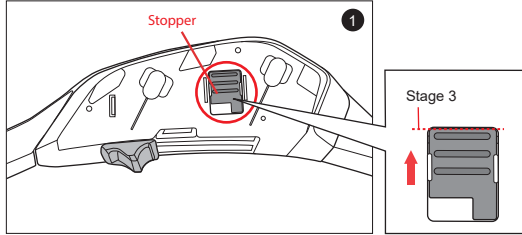
Above illustration shows lowered sun shield position.



There are three positions for the sun shield sliding lever.
Stage 1 - Standard position
Stage 2 - Lower position
Stage 3 - Lowest position

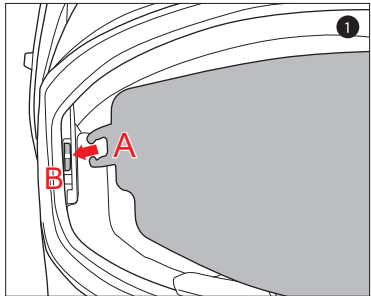
Sun shield Removal

1. Place the stopper in stage 3.
2. Push the sun shield lever in the direction of the arrow to lower the sun shield as much as possible.
3. Gently pull one side of the sun shield as arrow indicates (repeat same for other side).



Sun shield Installation

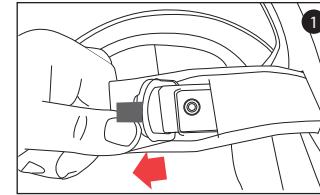
1. Insert sun shield tab 'A' into 'B' position.(Repeat same on opposite side)



※When installing the sun shield, be sure to have it slid behind the tap 'B' holder.

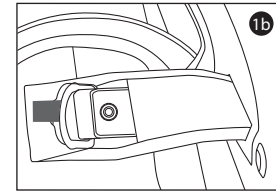
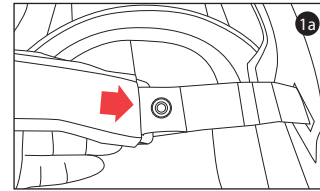
Chin Strap Cover Removal

1. Grasp the end of the chin strap cover and pull/pry away from the helmet.



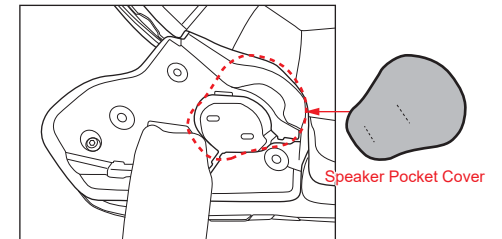
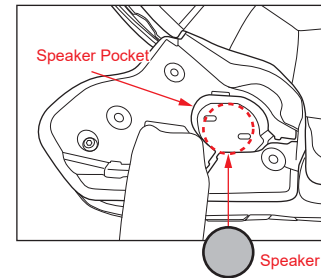
Chin Strap Cover Installation

1. Insert the chin strap into the chin strap cover and push the chin strap all the way in.



How to install speaker pocket cover

If you install communication system speakers, please do not use the speaker pocket cover.



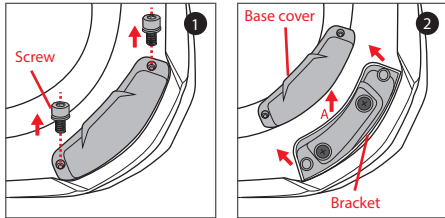
HJC Intercom Placement Guide

Mounting the Intercom

Unscrew and remove the base cover at the back of the helmet to begin mounting process of the intercom. Please refer to the manual of the current intercom you are using for directions on mounting and unmounting the intercom unit.

Base Cover Detachment

1. Remove the screws from the base cover. (picture 1)
2. While lifting the base cover(direction A) detach it by pushing toward direction B. (Picture 2)

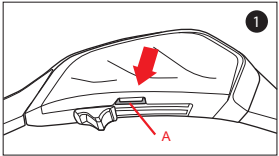


Mounting the Base Cover

Push the base cover underneath the gasket at the bottom of the helmet until the base cover and the bracket screw holes match. Using the screw, fixate the base cover onto the helmet.

Bluetooth UI Cover Detachment

1. Push the Bluetooth UI cover in the direction of the arrow while pressing down on A.



Mounting the Bluetooth UI Cover

1. After aligning the hook of the Bluetooth UI cover with the groove of the body, and push and attach.

