

Date : August 23, 2017

SAMPLE IDENTIFICATION

Internal code : 17H16-BUB1-1-DM

Customer identification : Organic Eucalyptus Essential Oil - India – Lot# 03001

Type : Essential oil

Source : *Eucalyptus globulus*

Customer : Buhbli Organics

ANALYSIS

Method : PC-PA-001-15E06, "Analysis of the composition of a liquid essential oil by GC-FID" (in French).

Identifications double-checked by GC-MS

Analyst : Sylvain Mercier, M. Sc., chimiste

Analysis date : 2017-08-23

Checked and approved by :

Sylvain Mercier. Sc., chimiste 2014-005

Note: This report may not be published, including online, without the written consent from Laboratoire PhytoChemia.

This report is digitally signed, it is only considered valid if the digital signature is intact.

IDENTIFIED COMPOUNDS

Identification	Column: BP5			Column: WAX			Molecular Class
	R.T.	R.I.	%	%	R.I.	R.T.	
Hexanol	2.74	883	0.01	0.02	1302	5.28*	Aliphatic alcohol
α -Thujene	3.32	921	0.10	2.11	947	1.22*	Monoterpene
α -Pinene	3.43	927	2.12	[2.11]	947	1.22*	Monoterpene
Camphene	3.71	944	0.19	0.14	994	1.53	Monoterpene
Sabinene	4.14	969	0.49	0.45	1061	2.09	Monoterpene
β -Pinene	4.21	973	0.47	0.44	1041	1.91	Monoterpene
Myrcene	4.49	990	3.14	3.41	1118	2.70*	Monoterpene
Octan-3-one	4.53	992	0.16	0.15	1202	3.79	Aliphatic ketone
Pseudolimonene	4.70	1002	0.18	0.13	1110	2.60	Monoterpene
Δ 3-Carene	4.77*	1005	0.90	0.55	1094	2.41	Monoterpene
α -Phellandrene	4.77*	1005	[0.90]	[3.41]	1118	2.70*	Monoterpene
Octanal	4.89	1012	0.21	1.88	1225	4.14*	Aliphatic aldehyde
α -Terpinene	4.96	1016	0.42	[3.41]	1118	2.70*	Monoterpene
Hexyl acetate	5.05	1021	1.95	[1.88]	1225	4.14*	Aliphatic ester
1,8-Cineole	5.34*	1037	87.45	87.21	1157	3.22*	Monoterp. ether
Limonene	5.34*	1037	[87.45]	[87.21]	1157	3.22*	Monoterpene
para-Cymene	5.34*	1037	[87.45]	1.26	1213	3.95*	Monoterpene
cis- β -Ocimene	5.37	1038	0.06	0.73	1194	3.67*	Monoterpene
trans- β -Ocimene	5.55	1048	0.04	[1.26]	1213	3.95*	Monoterpene
γ -Terpinene	5.74	1058	0.64	[0.73]	1194	3.67*	Monoterpene
cis-Linalool oxide (fur.)	6.01	1073	0.03	0.03	1383	6.58	Monoterp. alcohol
Terpinolene	6.21	1084	0.11	0.13	1235	4.28	Monoterpene
trans-Linalool oxide (fur.)	6.33	1090	0.01				Monoterp. alcohol
para-Cymenene	6.42	1095	0.05	0.03	1370	6.37	Monoterpene
α -Pinene oxide	6.69	1106	0.03	[0.02]	1302	5.28*	Monoterp. ether
allo-Ocimene	7.22	1125	0.01	0.02	1321	5.60	Monoterpene
trans-Pinocarveol	7.62	1140	0.01				Monoterp. alcohol
Camphor	7.77	1145	0.02	0.01	1424	7.46	Monoterp. ketone
α -Terpineol	9.46	1203	0.40	0.39	1621	14.27	Monoterp. alcohol
α -Terpinyl acetate	16.67	1342	0.40	0.35	1616	13.97	Monoterp. ester
Total identified			99.60%	99.44%			

*: Two or more compounds are coeluting on this column

[xx]: Duplicate percentage due to coelutions, not taken account in the identified total

Note: no correction factor was applied

OTHER DATA

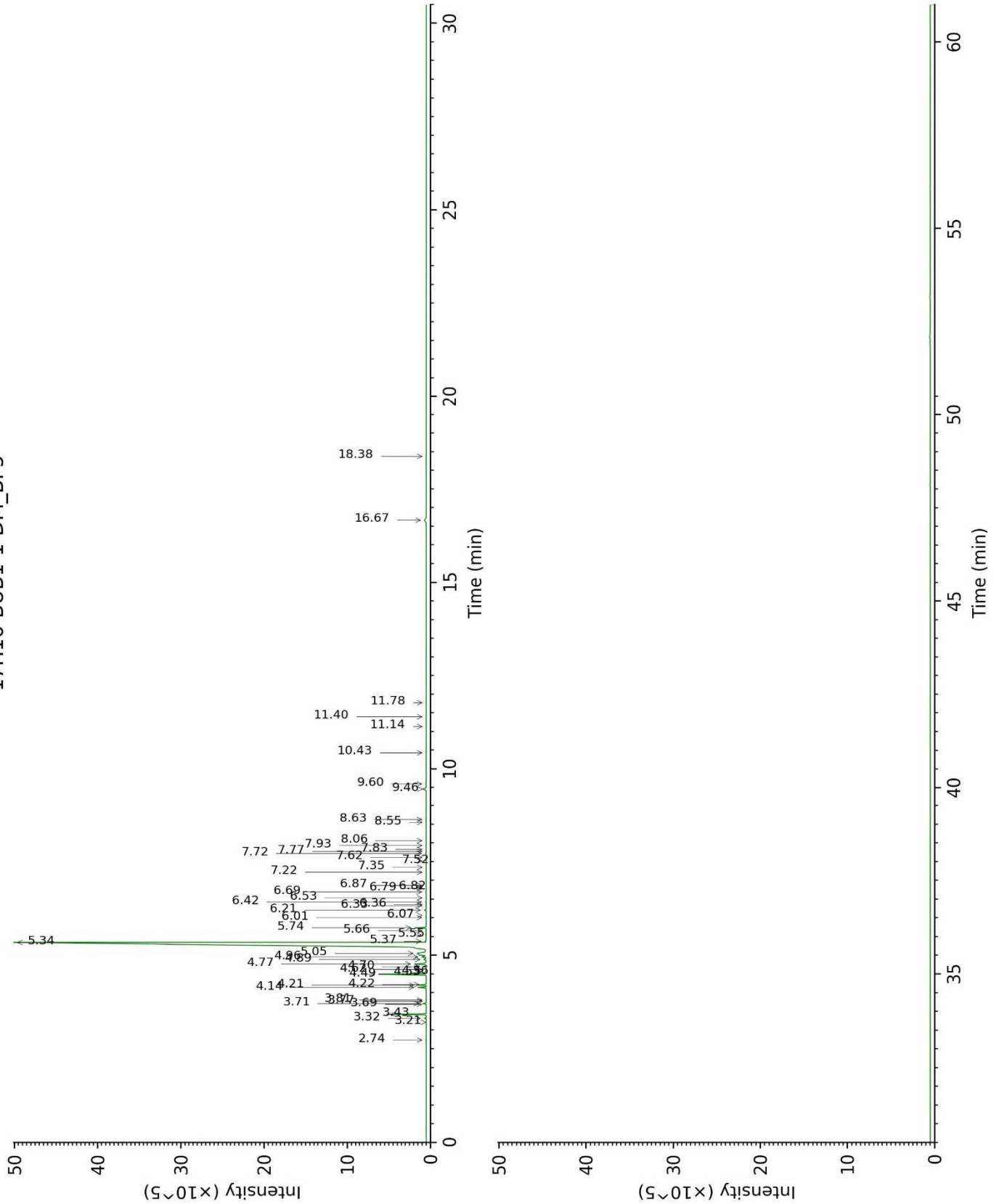
Physical aspect : Clear liquid

Refractive index : 1.4580 ± 0.0003 (20 °C)

CONCLUSION

No adulterant, contaminant or diluent were detected using this method.

17H16-BUB1-1-DM_BP5



17H16-BUB1-1-DM_WAX

