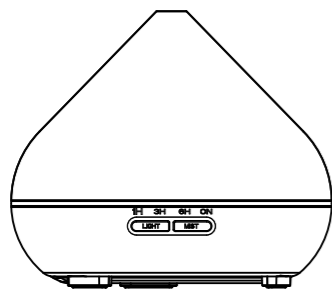


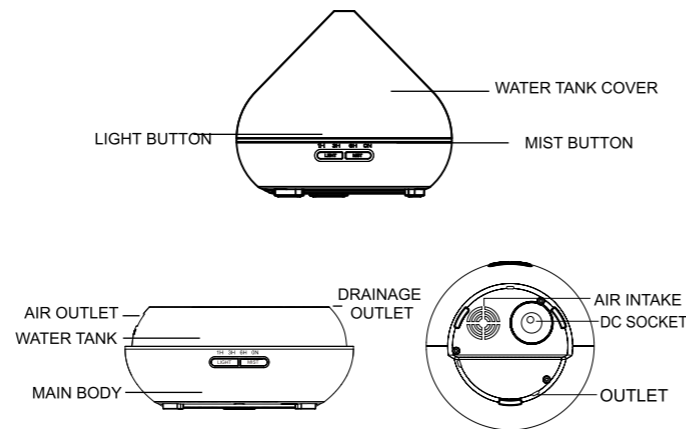
Ultrasonic Essential Oil Diffuser

User Manual



Ultrasonic Diffuser

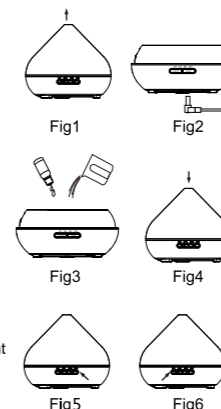
This Essential Oil Diffuser uses Ultrasonic waves to instantly vaporize water and essential oil in the tank, to produce a cool, dry, aromatic mist.



Ultrasonic Diffuser

OPERATION

1. Keep product level and upright. To remove the cover, lift straight up. **Fig1**
2. Connect the AC adaptor to the unit by plugging the cable into the DC socket on the base of the unit. **Fig2**
3. Plug the AC adaptor into a power outlet but do NOT turn on yet.
4. Use the measuring cup included to add tap water to the tank. Do not add hot water. Do not exceed the MAX line. Do not add water when the product is operating. Add 6-8 drops of essential oil to water tank vertically. **Fig3**
5. Replace the cover **Fig4**
6. Turn on by pressing the MIST button. Push MIST again to select desired time (1Hr, 3Hr, 6Hr or ON for continuous mist). Press and hold MIST button for high or low mist output. One BEEP = High Mist. Two Beeps = Low Mist. To turn OFF, press MIST button five times (from 1Hr, 3Hr, 6Hr, ON to OFF). **Fig5**
7. Press LIGHT button to turn on the LED light. Seven light color options of varying brightness are available. **Fig6**
8. When plugged in, unit does not begin to operate until MIST button is pushed.
9. Auto Shut-Off: Unit will automatically shut off (both MIST and LIGHTS) when water level is low.
10. When not in use for extended periods, drain the water from the unit, clean well with water and neutral soap, dry and store safely.



Ultrasonic Diffuser

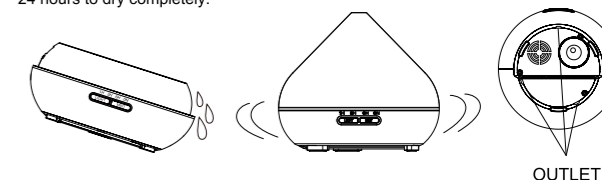
PRECAUTIONS

- Continuous product use time: 6 hours
- The amount and intensity of mist produced will vary. This is normal. Factors affecting mist output include type of water used, humidity, temperature, air currents and Auto shut-off feature when water runs out.
- Use only 100% pure, natural essential oils. Synthetic ingredients or impurities may cause damage to the product.
- Before trying a different essential oil aroma, clean the unit by following the maintenance instructions.

ACCIDENTAL SPILLAGE

If the unit is accidentally knocked over or tipped during use, follow the steps below :

1. Unplug the unit and remove cover.
2. Pour out any remaining water from the opposite side of the air outlet as shown in the diagram below.
3. Gently shake the unit to drain any water, then place in a well-ventilated area for 24 hours to dry completely.



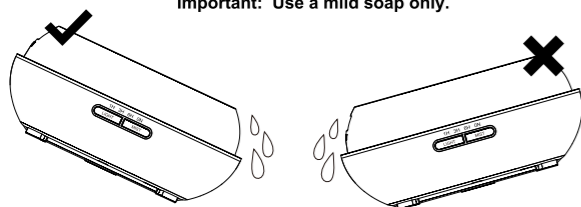
Ultrasonic Diffuser

MAINTENANCE

After using the unit 5-6 times (or 3-5 days) clean as follows:

1. Unplug the unit from its power outlet and remove cover.
2. Pour out any remaining water from the tank. Do not pour out water from the air outlet side. See diagram. Image on left shows correct way to pour.
3. Do not immerse in water.
4. Using a damp, soft cloth, warm water and mild soap, gently wipe down the unit. Dry with a clean cloth.
5. Do not use detergents containing acids or enzymes as they may damage the unit and create toxic fumes.

Important: Use a mild soap only.



Ultrasonic Diffuser

PRECAUTIONS

Read carefully before operating unit to prevent injury or damage:

- Do not fill over 300 mL "MAX" line.
- Do not switch on power when the tank is empty.
- Do not touch the Ultrasonic vibration plate.
- Clean regularly as per Maintenance instructions.
- Always unplug from power supply before doing any maintenance.
- After use, pour off any remaining water & oil from "DRAIN SIDE" of tank, and wipe with a clean dry cloth.
- Essential oils can stain. In the event of spillage, wipe up immediately with a soft cloth.
- Always use a measuring cup (provided) to add water to the tank; do not fill water directly from the tap.
- Keep mist away from furniture, clothing, walls, etc.
- Keep out of direct sunlight and away from heat sources, air conditioners or fans.
- Always place on a stable flat surface; do not place on carpets, duvets or unstable surfaces.
- Keep away from electronic equipment (TV, computers, etc.).
- Do not tip the product. This may cause water to enter the mechanism and cause malfunction. Never move product when in use.
- Product use time: 6 hours.
- Wait 60 minutes before restarting to avoid damage to Ultrasonic plate.
- Use tap water only. Do not use mineral water, sparkling water etc.
- Do not touch any part of the product with wet hands.
- Keep out of reach of children and pets.
- Keep cord clear of pathways. and do not pull on cord.
- If smoke or burning smell is detected, unplug immediately.

Ultrasonic Diffuser

TROUBLESHOOTING

Please refer to the table below if product isn't working properly:

Will not switch on or switch off	<ul style="list-style-type: none"> • Is there enough water in the tank? --Please add water to the tank • Is the power cord connected properly? --Please disconnect, check cables and re-connect carefully.
No mist or abnormal mist	<ul style="list-style-type: none"> • Not enough water? or too much water? --Please add suitable amount of water to the tank; water must not be filled over the 300 mL MAX line. • Dirt on the ultrasonic plate? --Please refer to maintenance instructions, clean and reassemble the unit. • Cover and inner cover are not installed properly? Dirt in the air suction port on the underside of the base? --If too much dust in the air suction port, mist output will be restricted. Clear the port of dust or debris.
Water leakage from product	<ul style="list-style-type: none"> • Cover and inner cover are not installed properly? --Remove and reinstall correctly, so mist can be released freely. • Low temperature or high humidity? --Under these conditions, the mist may condense quickly into water droplets.

Ultrasonic Diffuser

SPECIFICATIONS

Dimensions	Approx 168 x 150mm
Weight(excluding adaptor)	Approx 396g
Power: Input/Output	AC100-240V 50.60HZ / DC 24V 600mA
Length of cord	Approx 170cm
Electric consumption	Approx 14W
Time Mode	1H/3H/6H/ON
Tank Capacity	300mL
LED light	6pcs
Materials	PP/ABS/PC
Accessories	AC Adapter and manual
Method of mist production	2.4MHz

Ultrasonic Diffuser