



INSTALLATION INSTRUCTIONS

Part #FORD-CSS-Kit

Notice to Dealer / Consumer

Important! Read all instructions before attempting any work on the vehicle.

Disclaimer Notice: Installing this suspension system on any vehicle implies that you are in agreement with the following term and conditions with respect to that vehicle, the vehicle owner, and any or all occupants of said vehicle at any time:

- Sky Manufacturing is not responsible and cannot be held responsible for any conditions of said vehicle, including but not limited to the following: 1) Any and all adverse behavior, premature failure, or breakage caused by oversized tires and wheels, improper installation, failure to follow instructions, or any general negligence caused by installer or owner of said vehicle. 2) Any breakage or premature failure caused by racing or driver negligence. 3) Any incident determined to be caused by an increase height in said vehicle's center of gravity. 4) Any incident determined to be caused by improper installation. 5) Any incident determined to be caused by a failure of materials.
- Sky Manufacturing is to be held harmless by the installer of this suspension component, owner of said vehicle, and any parties related directly or indirectly to said vehicle or owner of said vehicle. Sky Manufacturing is to be held harmless by all parties mentioned during the course of any and all circumstances or incidence resulting from the installation of this suspension component.
- It is not the intention of Sky Manufacturing that said vehicle be modified for use on public highways sanctioned by the Department of Transportation, or any state or local governing body. Vehicle owner accepts sole responsibility for ensuring that said vehicle is not in violation of local, state, or federal laws or vehicle code. Please check local vehicle laws and regulations before modifying your vehicle.

By installing this kit or having this kit installed on your vehicle, you are implying that you agree to the above terms and conditions. Please do not install this system if you do not agree.

WARNING:

Vehicles modified for Off-road use may handle differently and vehicle may roll-over.

Vehicles modified for off-road use are generally do not improve in cornering or maneuverability on the highway, therefore it is imperative to familiarize yourself and all operators with the specific driving characteristics of the vehicle. Failure to operate in a safe and conservative manner may cause you, your passengers, and/or third parties to suffer serious injury or even death if control is lost.

Always wear your seatbelt and shoulder harness. Seatbelts not only help to protect occupants from injury but also keep the driver behind the wheel and in control when operating in rough terrain. Always remain on trails and observe conservation techniques while operating your vehicle.

Bill of Materials

Qty	Description
2	Coil Buckets
2	Radius Arm Frame Brackets
2	Swaybar Mounts
1	Panhard Bracket
4	Hardware Packs
1	Pitman Arm

Tools Recommended:

- 1-1/6, 15/16, 7/8, 13/16, 3/4 Socket and same size end wrenches
- 1/2 impact gun or Breaker Bar
- Air Hammer and Large Hammer
- Straight or 90 Die Grinder
- 1/2" Step or Drill Bit, Center Punch
- Torch

INSTALLATION NOTES:

- Inspect the contents of the kit and read the entire instructions before proceeding.
- We recommend this installation be performed by a qualified technician.
- We recommend using red Loctite on all bolts and Torque all hardware to factory specifications.
- Exhaust modifications may be necessary.

Hardware Pack (Coil Bucket)			
16	1/2 x 1.5" Hex Bolts	18	1/2" locknuts
2	1/2 x 4.5" Hex Bolts	36	1/2" washers
4	1" x 1/4" Wall x .75"		
Hardware Pack (Radius Arm Brackets)			
12	1/2 x 1.5" Hex Bolts	2	M18 x 130mm Bolts
12	1/2" locknuts	2	M18 LockNuts
24	1/2" washers		
Hardware Pack (Panhard Mount)			
1	1/2-20-2" Hex Bolts	1	1/2-12 Wrench Nut
1	Machined 1/2-20-1.5 Bolt	7	1/2" locknuts
4	1/2-20-1.5" Hex Bolt	14	1/2" washers
Hardware Pack (Sway Bar Mounts)			
4	3/8-1" Hex Bolts	8	3/8 Washer
4	3/8 locknuts		

FORD 92-97 F-250/350 Coil Spring Swap KIT INSTRUCTIONS

ZF5 Trucks will require custom crossmember

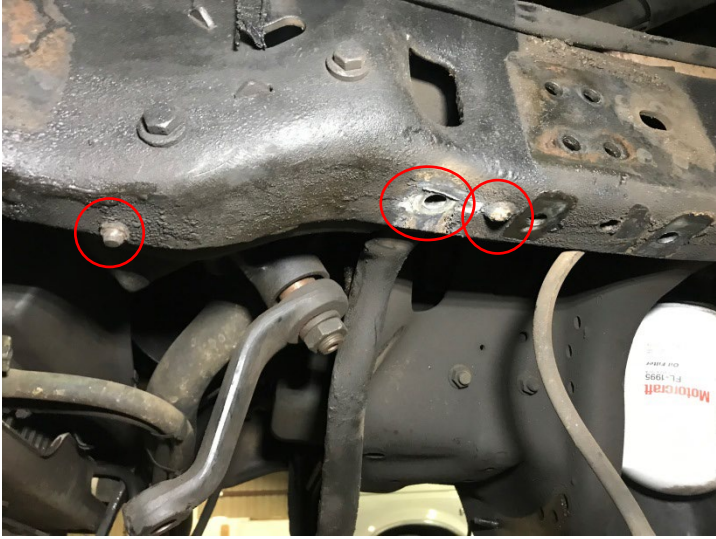
1. Secure Vehicle Properly with front tires off the ground, support front axle, and pinion as well.
2. Remove front bumper.



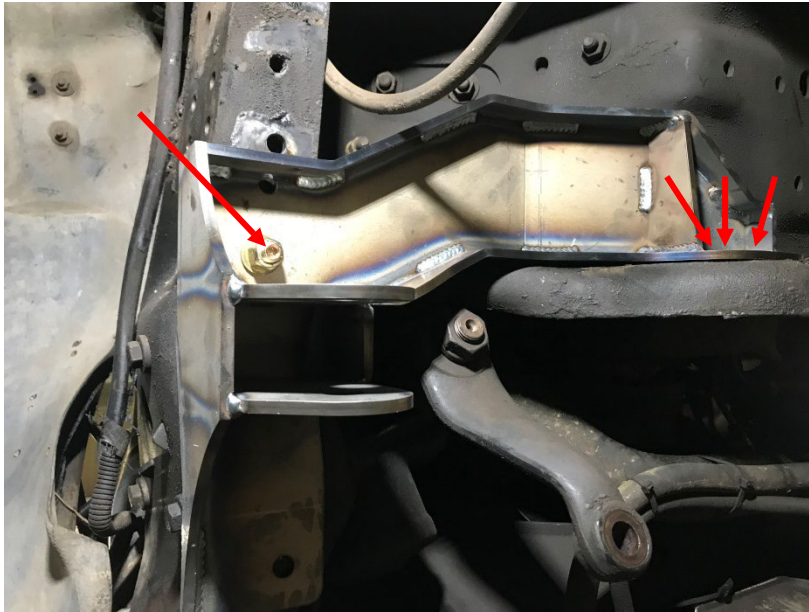
3. Remove everything on your front end. Pitman arm, springs, spring hangers, swaybar mounts, upper shock mounts, shackles, driveline, and bumpstop brackets.



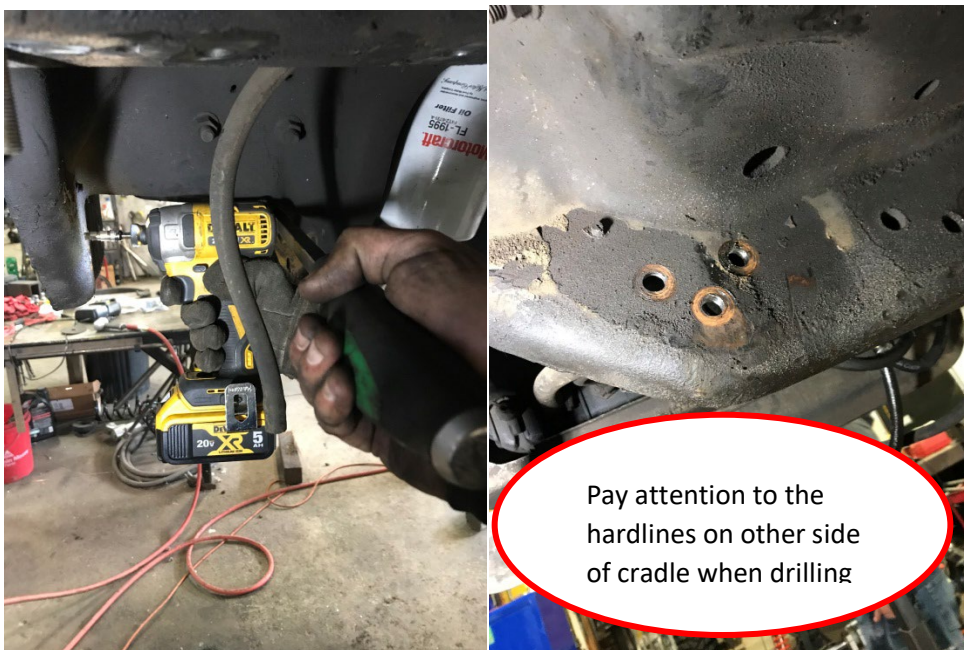
4. Swap out pitman arm to accept the drag link end. Remove line-up pegs and rivet on drivers side to prep for panhard bracket installation.



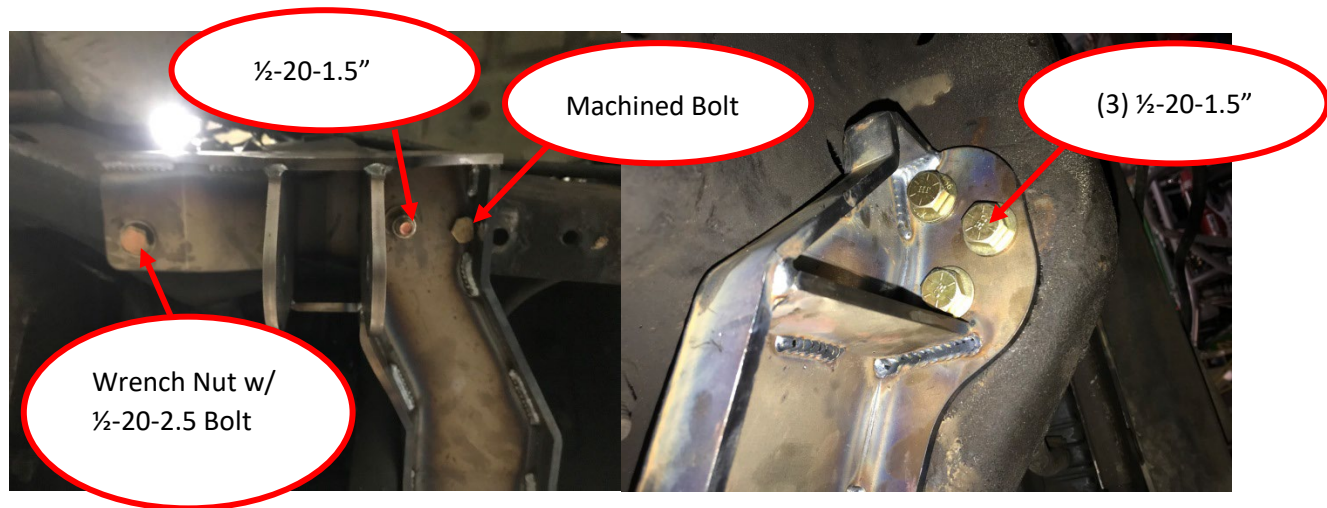
5. Install ½-20-1.5" bolt for panhard bracket, tighten on the frame, clamp bracket to cradle and mark the three holes on the cradle to drill.



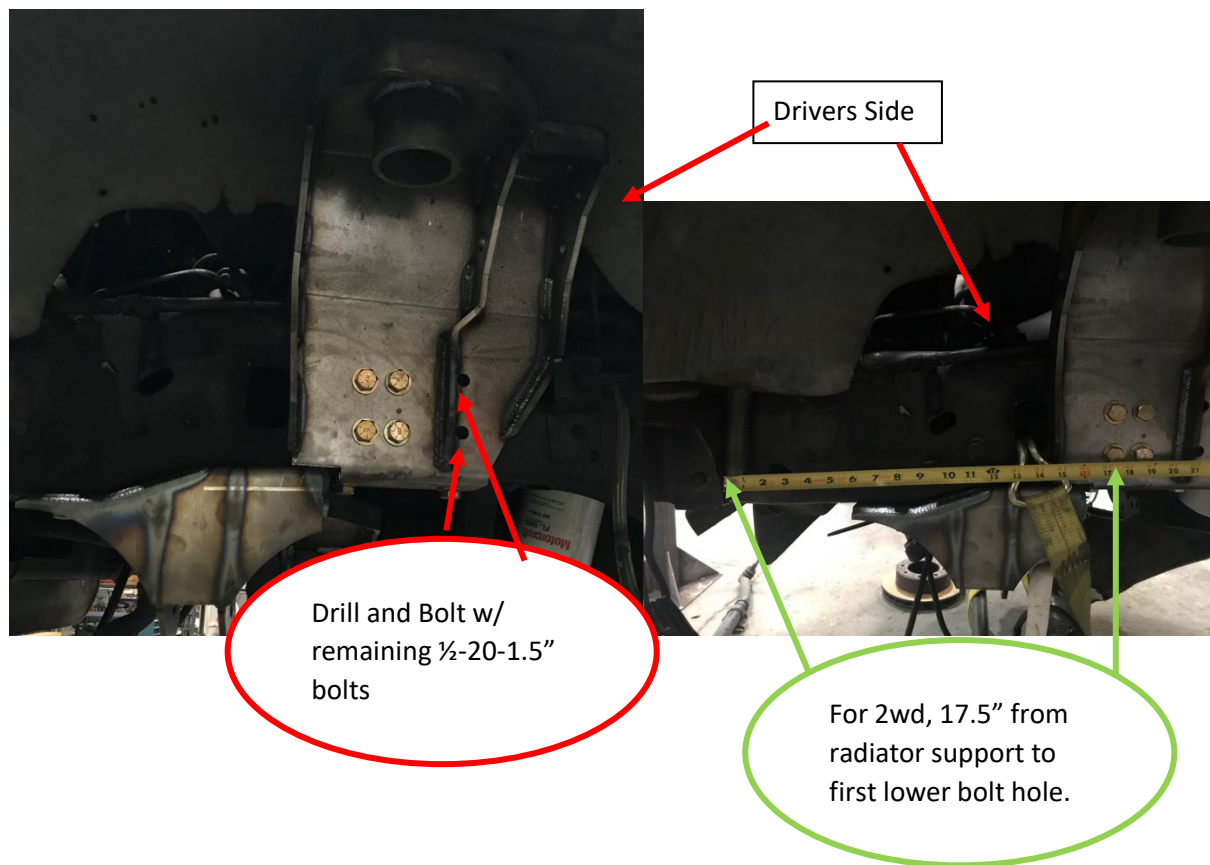
6. Here is a trick and the tools we use for getting in-between the cradle and using a pry bar to leverage the drill motor.



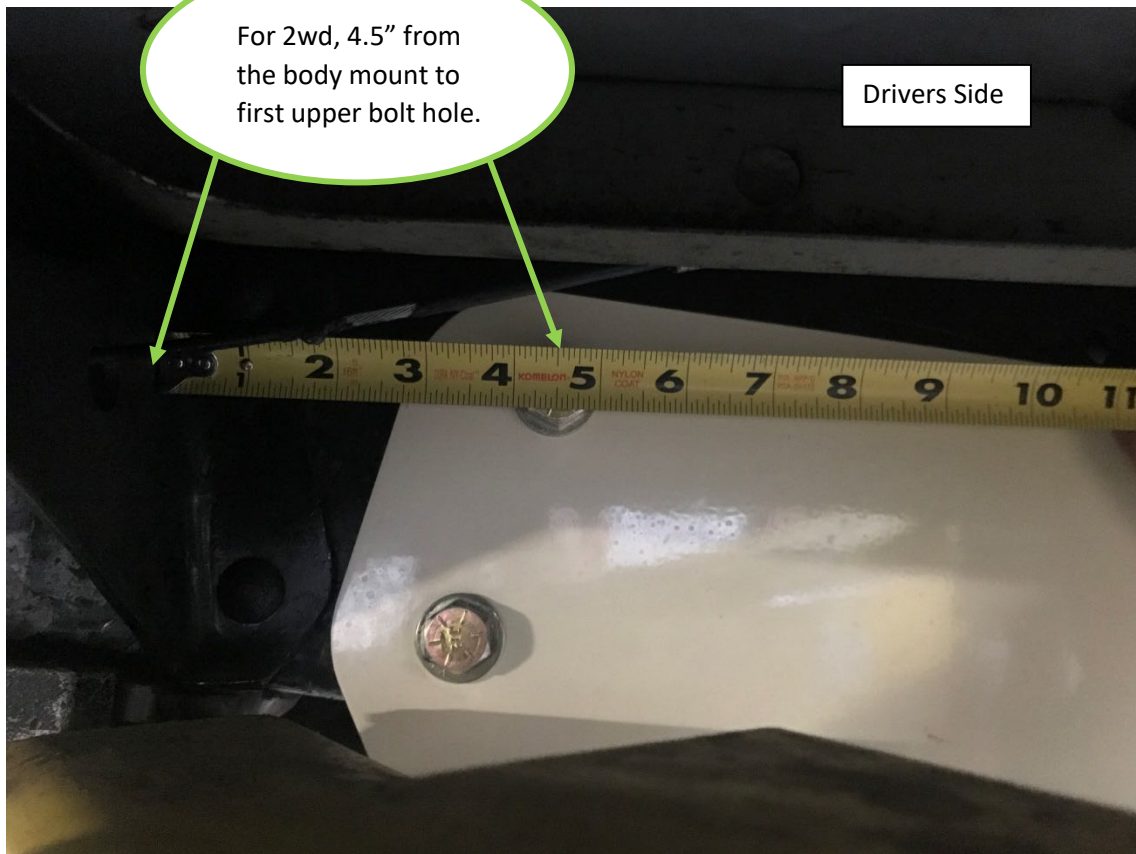
7. Install all panhard bolts, you will need to put the welded wrench nut through the front of the frame and line it up to thread the bolt through. (We will fish the nut through the frame and align it with the hole using a dental pick once you can see the nut looking through the hole with the bracket installed.)



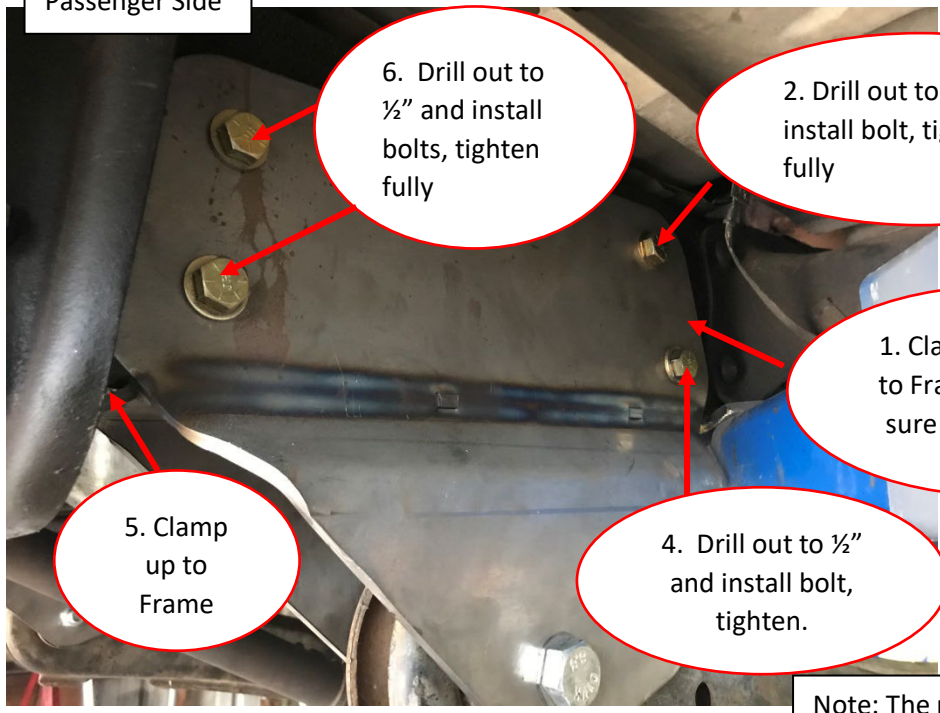
8. Mount the coil buckets (both sides) using 1/2-20-1.5" Bolts, drill remaining two holes that are not originally present in the frame.



9. Hang your radius arms in this bolt sequence between the two pictures on page 8 and note the orientation of the bolt in step 3. Make sure your frame is clear and clean to mount the frame brackets.



Passenger Side



6. Drill out to 1/2" and install bolts, tighten fully

2. Drill out to 1/2" and install bolt, tighten fully

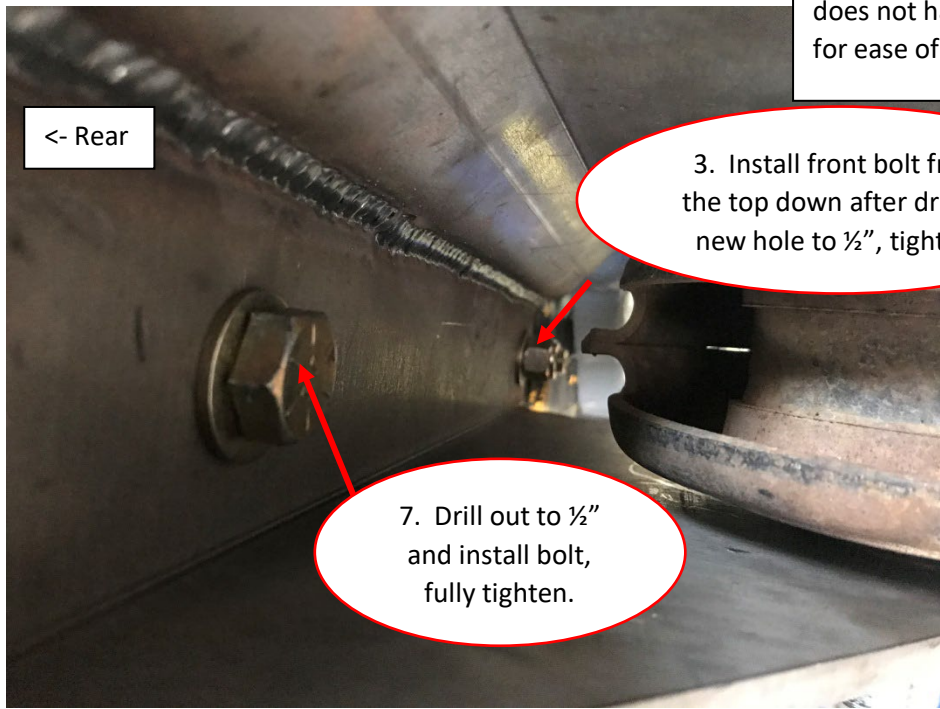
1. Clamp up and side to Frame tight, make sure there is no gap

5. Clamp up to Frame

4. Drill out to 1/2" and install bolt, tighten.

Note: The radius arm bracket shown does not have the updated gussets for ease of instructions.

<- Rear



3. Install front bolt from the top down after drilling new hole to 1/2", tighten.

7. Drill out to 1/2" and install bolt, fully tighten.

10. Install axle into radius arms, hook up steering, panhard bar, and then coil springs.



VERY IMPORTANT!!!

In an effort to maintain factory geometry and have the panhard bar in line with the bracket, you may need to trim excess material off of the cradle as shown in picture for an adjustable panhard bar to clear. The stock panhard bar should clear with very minimal trimming.



The Icon Adjustable panhard bar is the best panhard bar we have used because the adjusters are not in line with the cradle which can create a problem on some of the cheaper bars. It is also rated for 0" of lift.

11. Install SwayBar Brackets with 3/8ths bolts.
12. Install OEM super duty bump stops in the bottom of the coil buckets.



13. This will be around a 0-2" lift, there are over 10 different coil springs that ford made since 05'. Each coil has different qualities that can add or remove lift. Our panhard bracket is set up to the coils we used, if your axle is not centered once you set the truck on the ground, you will need an adjustable panhard bar for your axle.
14. Recheck all of the bolts, tighten after 50 miles, recheck after 1000 miles.