

HOFMANN® 

geoliner® 770



**PRECISION
WHEEL ALIGNMENT**

WHEEL SERVICE EXCELLENCE

geoliner® 770

PREMIUM SERVICE

THE ULTIMATE IN PRECISION ALIGNMENT

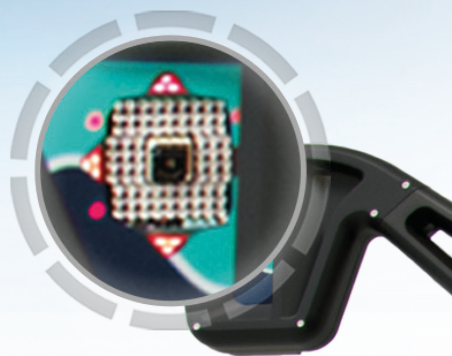
The geoliner® 770 is a mobile system designed for precise and accurate measurements for a precise wheel alignment service.

Our Advanced Notification system monitors the entire alignment process and automatically compensates for possible errors, alerting the technician if corrective action is required, which ensures an accurate and efficient alignment service.



AUTOMATIC HEIGHT TRACKING

Automatic height tracking cameras follow the XD targets as the vehicle is raised on the rack, improving productivity while maintaining precision.



VODI™

Exclusive Vehicle Orientation Directional Indicator (VODI) helps guide the technician through the measurement process when the monitor is not in view.

MOBILITY

The geoliner 770 folding camera beams and low center of gravity provide convenient mobility between alignment bays.



MEASUREMENT MADE EASY

RIDE HEIGHT MEASUREMENT

Measure the vehicle ride height to guarantee a proper adjustment. The *geoliner 770* offers multiple options for ride height measurement, depending on the vehicle type and manufacturer. Eliminate manual data entry, speed up measuring, and increase accuracy using our specially designed, optional Ride Height Targets.



FENDER TARGETS

No manual entry is required when using our real-time ride height Fender Targets with easy suction cup attachment. Alignment specifications adjust automatically according to the ride height measurement.

TARGET IMAGING POINTER

Alternatively, the Target Imaging Pointer (TIP) measures ride height more accurately than manual measuring, to obtain proper alignment specifications.



AC400 CLAMPS

Clamp attaches to the tire with limited clamping force without touching the rim for a safe, fast and consistent placement every time.



AC200 CLAMPS

Fast and easy to use with self-centering design, two-sided claws provide reliable clamping, even over hub caps.

EZ-TOE

Our advanced software makes it easy to quickly and accurately measure toe angle, allowing technicians to turn the wheel to access challenging adjustment points without using a steering wheel holder.

WHEELS OFF ADJUSTMENT

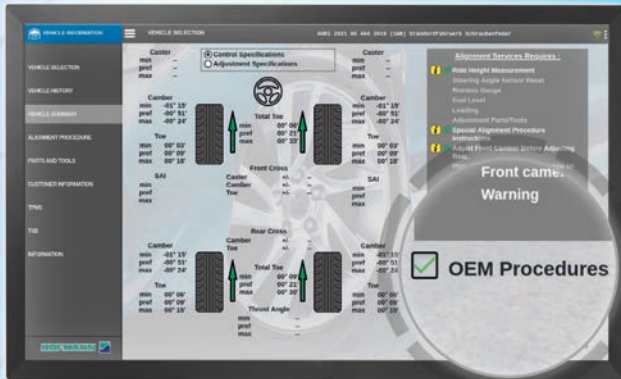
Remove the wheel and use the wheels off hub adapter to attach the target directly to a brake rotor for easier access to adjustment area.

OEM GUIDED PROCEDURES

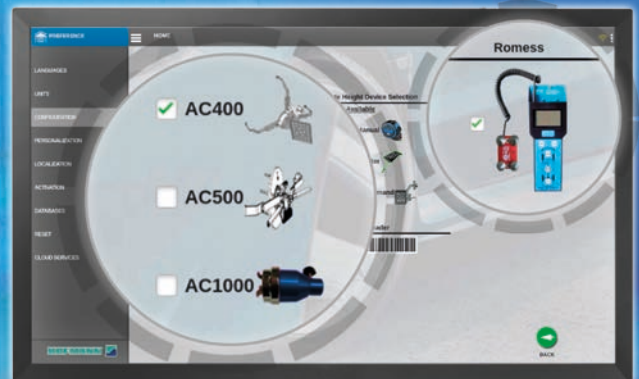
The *geoliner 770* advanced software offers instant access to real-time aftermarket OEM recommended adjustments and repair information, as well as the correct clamps required for a precise, OEM-specified wheel alignment service.



OEM PROCEDURES



SPECIFIC OEM CLAMPS & ROMESS



DESIGNED FOR PROFESSIONALS



SMART NOTIFICATION SYSTEM

The *geoliner 770* offers advanced XD cameras and a top-of-the-line monitoring system capable of finding errors during the alignment process.

The system will either fix the problem by itself or notify the technician when necessary in order to save time and ensure accuracy on every alignment.

ADVANCED MEASUREMENTS

Measurements designed for advanced suspension troubleshooting and modified suspensions; including ride height, SAI, frame angle, max turn, and toe out on turns.

CROSS DIMENSIONS

Values for frame verification are provided to confirm that the suspension is square. This measurement can identify frame or structural damage before alignment adjustments are made.

WHEEL DIAMETER

This measurement will notify the operator of potentially mismatched tires or excessive tread wear, both potential causes of vehicle pulling and drive train damage.

WHEEL SERVICE EXCELLENCE

QUICK ALIGNMENT CHECK

*PROVIDE THE ULTIMATE SERVICE FOR YOUR CUSTOMERS
BY QUICKLY IDENTIFYING IF THE VEHICLE NEEDS
ALIGNMENT SERVICE*

IMPROVE YOUR ALIGNMENT SALES

with Quick Alignment Check.

In less than a minute you can quickly identify if the vehicle needs an adjustment with the Quick Alignment Check.

Provide a detailed report that includes critical vehicle measurements, such as:

- Track Width
- Front and Rear Toe
- Camber
- Wheelbase
- Wheel Diameter
- Cross Dimensions



MAXIMIZE PRODUCTIVITY



THE *GEOLINER 770*

IS WIFI® ENABLED, ALLOWING YOU TO:

SAVE INFORMATION to a secure cloud server and access reports remotely to send to customers via email or to print from anywhere in the shop.

CONNECT A TABLET to use as a secondary display during the alignment for added mobility.

STAY UP-TO-DATE with automatic access to software and specification updates.

TECHNICAL SPECIFICATIONS

Tire Diameter	19" - 39" 48-99cm
Track Width	48" - 96" 122-244cm
Wheelbase	79" - 180" 201-457cm
Power Requirement	100-230V AC (must have Earth ground) 15 amp Circuit, 50/60HZ, UL201, C22.2, CE Approved

INCLUDED ACCESSORIES

- Steering Wheel Holder
- Brake Pedal Depressor
- Color Inkjet Printer
- (2) Wheel Chocks
- 24" Flat Panel Monitor
- Wheel Clamps with XD Targets



US 800.251.4500

CANADA 800.267.2185



Snap-on® Total Shop Solutions offers a wide range of garage equipment solutions for workshops, garages, car dealers and tire shops, thanks to the specific solutions provided by its portfolio of premium brands. Hofmann® is a brand of TSS and is committed to product innovation and improvement. Therefore, specifications listed in this sell sheet may change without notice. ©2022 Snap-on Incorporated. Hofmann® is a trademark, registered in the United States and other countries, of Snap-on Incorporated. All rights reserved. All other marks are marks of their respective holders.
10/2022 ss163506c

HOFMANN®

HOFMANN-EQUIPMENT.COM