

*geoliner*<sup>®</sup> **678**



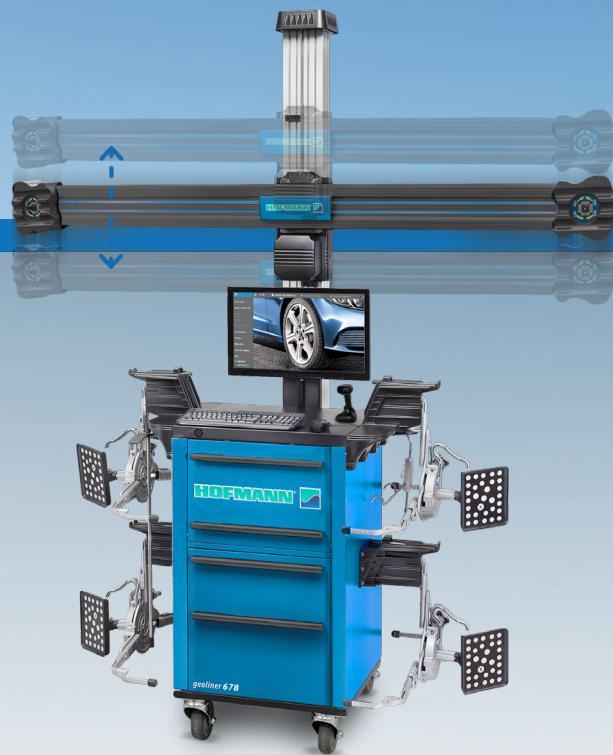
**IMAGING WHEEL ALIGNER**

*HIGH-VOLUME WHEEL ALIGNMENT*

geoliner® 678

# ADVANCED, INTUITIVE DESIGN FOR QUICK AND EASY ALIGNMENTS

With the geoliner® 678, automotive shops can maximize their profitability by investing in an advanced wheel alignment system. This superior technology helps reduce operating costs and increases productivity while streamlining the entire alignment process. Not only will your shop achieve precision results – you'll also be able to do it faster than ever before! Make sure your business is equipped with the best tool for the job, and choose the geoliner® 678 for better performance, more efficient operation and greater profits.



## AUTOMATIC HEIGHT TRACKING

Automatic height tracking follows the vehicle as it is raised and lowered on the lift, eliminating the need for manual readjustment of the camera and reducing time spent at the console.

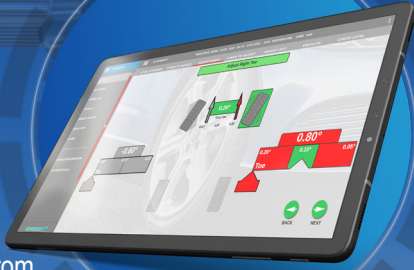
## VODI™

The Vehicle Orientation Directional Indicator (VODI) guides technicians through the measurement process with red and green LED lighting, providing intuitive guidance while reducing technician time spent walking back and forth between the vehicle and the aligner. This technology simplifies the alignment procedure and increases the accuracy of the entire process.

# PROFITS GROW AS SERVICE OPPORTUNITIES ARISE.

## SECONDARY SCREEN

Have access to all the readings from anywhere in the shop. (Optional)



## AUDIT MODE

Scan every vehicle with our unique Audit Mode function which performs a fast verification of the vehicle by measuring the front and rear toe, track width, camber, wheelbase, wheel diameter and cross dimensions. This will help identify any alignment problems so you can sell more services and keep your aligner operating at full-service to increase your shop's revenue.



## QUICK COMPENSATION AND OPTIMIZED FLOW OF ALIGNMENT

Boost productivity by eliminating unnecessary steps. The alignment process is greatly enhanced by our quick measurement compensation and optimized alignment flow, which also enables shops to grow their alignment business through increased productivity.



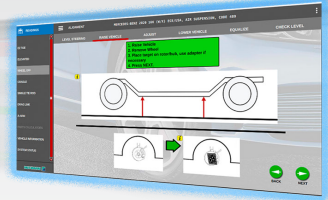
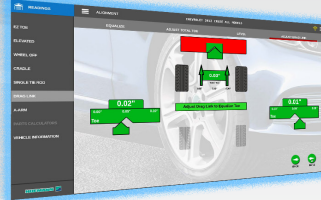
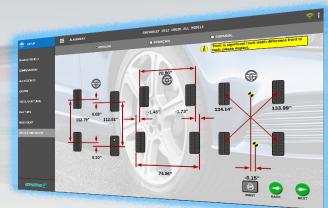
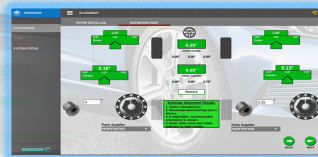
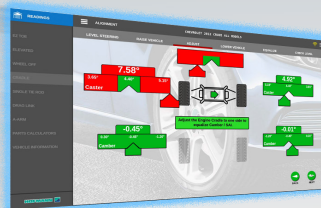
## VIN SCANNER

Scan vehicle ID numbers in an instant.

## ADVANCED ADJUSTMENTS

Our cutting-edge software makes it simple to measure advanced settings such as:

- EZ-Toe
- A-Arm
- Cradle
- Single Tie Rod
- Drag Link
- Toe Curve
- Elevated
- Wheels Off
- Parts Calculator
- Parts & Tools



### EZ-TOE

Turn the front wheels and access difficult adjustment points while still displaying centered toe readings.

### WHEELS OFF MODE

Hard-to-reach adjustments are made easier.

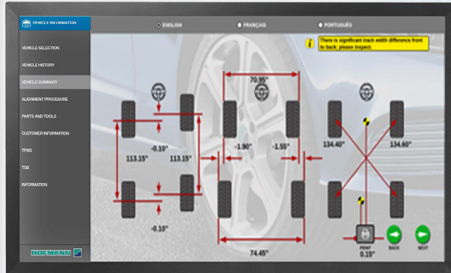
### PARTS CALCULATOR

Allows the user to enter the currently installed parts and select potential replacement parts to see the alignment results.

**HIGH-VOLUME WHEEL ALIGNMENT**

## ADVANCED MEASUREMENTS

Measurements are designed for advanced suspension troubleshooting and modified suspensions, including ride height, SAI, frame angle, max turn and toe out on turns.



## XD CAMERA TECHNOLOGY

Video speed cameras constantly monitor the alignment and immediately detect common environmental conditions or vehicle problems that can cause maladjustments.

## SMART NOTIFICATION SYSTEM

Our smart notification system maximizes efficiency and accuracy by automatically identifying and fixing issues like suspension stress or environmental errors, which only requires a technicians intervention when more information is needed to take different corrective action.

## MITCHELL 1®

Take advantage of our connectivity to access the largest database in the market for alignment repair information in seconds from Mitchell 1®.

## CLOUD SERVICES

You may quickly email or print service reports to your clients from anywhere in the shop.

## CLAMPS

Our standard AC400 clamps provides a quick and secure clamping without touching the rim.



AC400

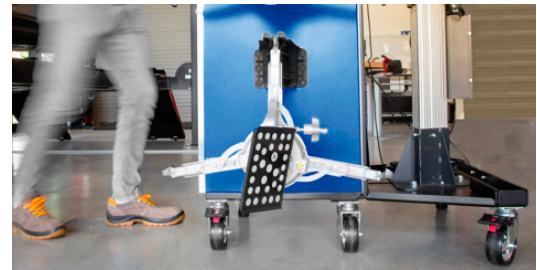


AC200

Optional over hub two-sided claws clamp (EAK0350J80A)

## MOBILITY KIT

For flexible installation and usage, the cross-beam can be mounted to the cabinet using the optional mobility kit (EAK0320J78C).



### TECHNICAL SPECIFICATIONS

Track Width	48–96" (122–244cm)
Tire Diameter - AC400	19–39" (48–99cm)

Rim Size - AC200	12–24" (30–61cm)
Power Supply	110V – 50/60Hz

### OPTIONAL ACCESSORIES:

AC400 Dual Wheel Adapter	EAK0305J50A
AC200 Wheel Clamp Floor Stand	EAK0289J71A
AC200 Wheel Clamp Wall Mount	EAA0446J76B
AC200 Quick Clamp Kit	EAK0268J63B

Wheels Off Hub Adapter	EAK0222J83B
2" Wheel Hub Extensions	EAK0289J62B
Alignment Stand w Set Bridges	RB24
Premium Stainless Steel (2) Turntables	EAK0289J06A



US 800.251.4500

CANADA 800.267.2185



Snap-on® Total Shop Solutions offers a wide range of garage equipment solutions for workshops, garages, car dealers and tire shops, thanks to the specific solutions provided by its portfolio of premium brands. Hofmann® is a brand of TSS and is committed to product innovation and improvement. Therefore, specifications listed in this sell sheet may change without notice. ©2021 Snap-on Incorporated. Hofmann® is a trademark, registered in the United States and other countries, of Snap-on Incorporated. All rights reserved. All other marks are marks of their respective holders. 02/2023 SSWA23008



HOFMANN-EQUIPMENT.COM