



Article

Micro-Injection Moulding In-Line Quality Assurance Based on Product and Process Fingerprints

Federico Baruffi * , Matteo Calaon and Guido Tosello

Department of Mechanical Engineering, Technical University of Denmark, Produktionstorvet Building 427A, 2800 Kgs. Lyngby, Denmark; mcal@mek.dtu.dk (M.C.); guto@mek.dtu.dk (G.T.)

* Correspondence: febaru@mek.dtu.dk; Tel.: +45-45-25-4822

Received: 15 May 2018; Accepted: 4 June 2018; Published: 11 June 2018



Abstract: Micro-injection moulding (μ IM) is a replication-based process enabling the cost-effective production of complex and net-shaped miniaturized plastic components. The micro-scaled size of such parts poses great challenges in assessing their dimensional quality and often leads to time-consuming and unprofitable off-line measurement procedures. In this work, the authors proposed a novel method to verify the quality of a three-dimensional micro moulded component (nominal volume equal to 0.07 mm^3) based on the combination of optical micro metrology and injection moulding process monitoring. The most significant dimensional features of the micro part were measured using a focus variation microscope. Their dependency on the variation of μ IM process parameters was studied with a Design of Experiments (DoE) statistical approach. A correlation study allowed the identification of the product fingerprint, i.e., the dimensional characteristic that was most linked to the overall part quality and critical for product functionality. Injection pressure and velocity curves were recorded during each moulding cycle to identify the process fingerprint, i.e., the most sensitive and quality-related process indicator. The results of the study showed that the dimensional quality of the micro component could be effectively controlled in-line by combining the two fingerprints, thus opening the door for future μ IM in-line process optimization and quality assessment.

Keywords: micro-injection moulding; quality assurance; process monitoring; micro metrology

1. Introduction

Microsystems are among the main drivers of the technological evolution introduced by the information age. Consequently, the demand for small components whose dimensions are in the micrometric and nanometric scale has largely increased in numerous engineering fields over the recent decades [1]. In this context, micro components made of thermoplastic polymers became more and more widespread due to the reduced weight, high chemical resistance, low production cost and ease of fabrication, even in complex shapes. Most of these products are nowadays produced by micro-injection moulding (μ IM). This process was ideated as miniaturized version of the conventional injection moulding process (IM), with the aim of combining its high productivity with micro manufacturing capabilities [2]. If, on one hand, the two technologies share the same process cycle phases (plasticization, injection, packing, cooling and ejection), on the other, they have substantial differences [3]. Firstly, dedicated μ IM machines having separate elements for plasticization and injection have to be used if tolerances in the micrometre range are the production target [4]. Since the positive outcome of any replication process strictly depends on the dimensional accuracy of the master, new micro tooling technologies were developed to manufacture moulds with features having micrometric dimensions [5]. Another discrepancy between IM and μ IM relates to the filling of the cavity, which becomes much more challenging in the micro-scale. In fact, as the injected melt volume

is extremely small, the surface-to-volume ratio increases, and thus a very fast solidification occurs, hindering the complete filling of the cavity [6]. Therefore, in order to favour the replication capability of the process, high levels of injection speed, melt temperature and mould temperature are typically required [7–9]. Since the levels of these parameters are superiorly limited by the occurrence of polymer degradation, the process window of μ IM becomes narrower than that of IM, making process optimization a fundamental step for manufacturing products that comply with design specifications. However, μ IM optimization is made difficult by the fact that, when the geometrical characteristics of the components are the response variables, time-consuming experimental investigations based on off-line, high-accuracy dimensional measurements are necessary to tune the process. In fact, numerous features have to be assessed at the same time by means of state-of-the-art measurement systems. Typically, optical instruments are preferable for this task [10–12] because of their contactless nature and sub-micrometric resolution. A possible solution to this issue is the identification of a single measurable characteristic of the part that is strongly statistically correlated to the other measurands and therefore to the overall product quality. By assessing only this dimensional outcome, which can be referred to as the “product fingerprint”, the conformance to the specifications of all functional tolerances could be ensured. The product fingerprint must be also sensitive to the variation of process settings in order to work as an optimization tool for μ IM; a change of process parameters has to be reflected in a variation of the fingerprint value if an effective control over the process has to be performed.

Another typical quality assurance issue of μ IM and other moulding processes is that their extremely high throughput rates do not allow for measurement of all the produced parts with three-dimensional instruments [13], and therefore the production is verified by measuring a few random components extracted from the manufactured batch. This approach, which is favoured by the industry for its cost efficiency, is unsuitable for micro productions, where micrometric tolerances require an extremely high process repeatability and therefore a total quality assurance approach. A solution to this problem is the use of μ IM process monitoring. The application of process monitoring to IM has been often reported in literature. Most studies [14–16] agree upon the centrality of cavity pressure as the process variable that best summarizes the evolution of the moulding cycle and determines the final part shrinkage. If, on one hand, the usage of a pressure sensor inside the cavity is generally without risks for a conventional moulded part, on the other, the size of micro plastic components is comparable or even larger than that of typical transducers, therefore impeding their use without drastically changing the cavity shape and the part design [17]. A possible solution to this problem is monitoring the pressure provided by the injection screw or plunger (the so-called hydraulic pressure in IM). In fact, this quantity is always stored in the machine data for each moulding cycle and can be extracted for analysis without the need to use any further sensor. The main drawback of this approach is the substantial difference between cavity and hydraulic pressures due to pressure losses generated within the nozzle and feed system and to the high compressibility of polymer melts. Therefore, the pressure measured at the plunger might not be representative of how the polymer melt is behaving inside the cavity.

In the field of μ IM process monitoring, Griffiths et al. examined the effect of the main μ IM process parameters on cavity pressure [18], demoulding forces [19], melt temperature [20], and air evacuation from the cavity [21]. They concluded, in all cases, that the selection of different process settings had a relevant impact on the recorded conditions, demonstrating that μ IM can be successfully controlled by monitoring suitable process variables. However, the authors did not investigate the correlation between those variables and the dimensional quality of the produced micro components. If a strong correlation between the part dimensions and a monitored process indicator, called the “process fingerprint”, is established, the quality assurance can be carried out in-line by only controlling its value. The process fingerprint must be also influenced by the variation of the main μ IM process parameters in order to be used as an optimization tool. By finally correlating the product and process fingerprints, an experimental approach to carry out an in-line control of the main part features can be established and implemented, reducing the quality control time and simultaneously enhancing its robustness.

The present paper introduces a study aimed at the identification of the product and process fingerprints for the μ IM process of a three-dimensional micro component for medical applications. The most important geometrical part features were selected and the effects of the variation of process parameters were studied by applying a statistical Design of Experiments (DoE) approach. A correlation study was then performed to identify the feature being mostly correlated with the others, i.e., the product fingerprint. In-line process monitoring was also applied during the moulding experiments; injection pressure and injection velocity curves were analysed with respect to process variations and the best process fingerprint candidate was identified. Finally, the correlation between the process and product fingerprints was investigated to establish an effective in-line quality assessment procedure for the micro part.

2. Materials and Methods

2.1. Case Study

The produced part was a polyoxymethylene (POM) micro part used in medical applications. Figure 1 shows its main dimensions and three-dimensional shape. The two structures on the internal surface and the 2° taper of the outer conical surface were designed to facilitate the ejection of the part from the mould. Since its nominal volume equalled 0.07 mm^3 (equivalent to a nominal mass of 0.1 mg) and the dimensional tolerances of the diameters were specified as $\pm 10 \mu\text{m}$, the part belonged to the category of micro moulded products according to the standard definitions [22]. Table 1 reports some examples of the volumes of micro moulded components reported in literature. The extremely small size of the part made the use of any in-cavity sensor inapplicable.

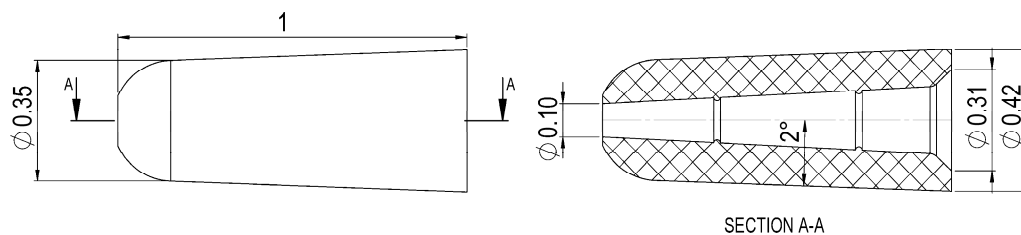


Figure 1. Geometry and nominal dimensions in mm of the micro component.

Table 1. Examples of micro-injection moulding (μ IM) components and their volumes.

Micro component	Approximate Volume/ mm^3	Reference
Micro filter	1.0	[11]
Micro ring	2.5	[23]
Part for weld line investigation	6.5	[24]
Part with micro pillars	12.0	[17]
Micro gear	14.0	[25]
Toggle for hearing aids	22.0	[26]
Dog-bone tensile bar	28.0	[27]
Thin-walled part	31.5	[28]
Square part for shrinkage evaluation	35.0	[29]
Cylindrical support with micro pillars	110.0	[30]
Disco with micro features and nano features	113.5	[31]

2.2. Mould Design

The micro components were moulded using a replaceable insert made of tool steel mounted in a three-plate mould (see Figure 2a). Such a mould configuration had the main advantage of enabling the automatic separation of the component from the feed system. This feature becomes particularly useful when small parts are produced since it avoids a manual gate separation that inevitably introduces

variability in the production process. The structured hole was created by replicating a micro pin protruding from the movable plate of the mould. The insert cavity and the pin were both machined using micro electro-discharge-machining (μ EDM). The feed system consisted of a cylindrical sprue with a 5 mm diameter, a conical runner, and a ring gate that had a nominal thickness of 25 μ m and was axially symmetric with respect to the part. The ejection was carried out by means of a vacuum gripper mounted on a robot arm, thus ensuring a fully automated μ IM process. Figure 3 illustrates the mould design and the location of the part within the mould frame.

Preliminary experiments highlighted the need of a venting channel to achieve complete filling of the cavity. The cause of this was identified as the presence of entrapped air in the cavity, and therefore a circular 5 μ m deep venting channel was machined by μ EDM on the back of the insert (see Figures 2b and 3c) to obtain consistent part filling. If, on one hand, such modification allowed the issue related to the unfilling to be solved, on the other, it generated a flash defect around the largest outer diameter of the component since the polymer melt was allowed to flow inside the venting channel.

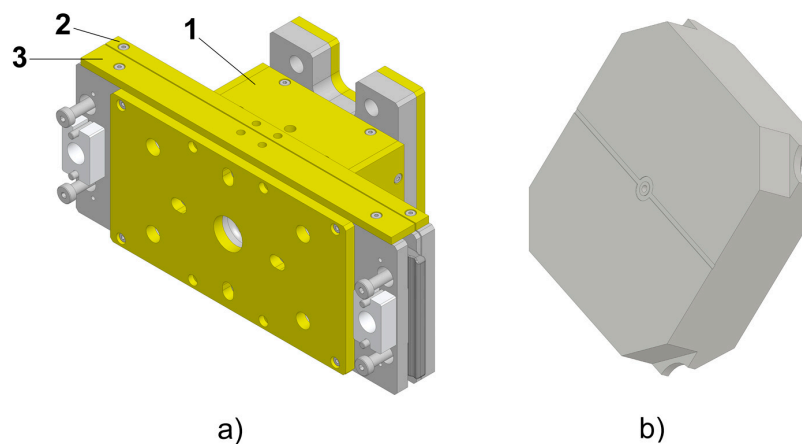


Figure 2. (a) 3D model of the mould: 1, 2, and 3 indicate ejection, middle, and injection plates respectively. (b) Replaceable insert with venting channel machined on the opposite side of the injection point.

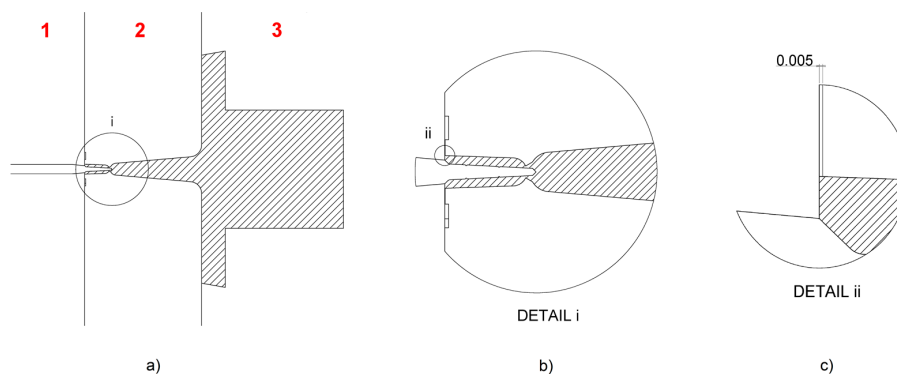


Figure 3. Mould design. (a) Mould cross-section showing the part and feed system location (hatched) with respect to the three mould plates (numbered in red). (b) Detail of the moulded component and ring gate. (c) Detail of the venting channel machined on the insert at the end of the flow path (nominal thickness in mm).

2.3. Experimental Details

Micro moulding experiments were carried out using a state-of-the-art Wittmann Battenfeld MicroPower 15 μ IM machine (Kottingbrunn, Austria, maximum injection velocity: 750 mm/s, maximum clamping force: 150 kN). This machine has a plasticization screw and a separate injection

plunger; the first has a diameter of 14 mm and the function of melting and homogenizing the polymer, while the second has a diameter of 5 mm and drives the melt inside the cavity with the desired speed and pressure. The material used was an unfilled POM (Hostaform® C 27021, Celanese, Irving, TX, USA). This grade was selected for its peculiar properties, namely its low friction coefficient, good mechanical properties, and extremely low melt viscosity. Table 2 reports the main characteristics of the material and Figure 4 shows its viscosity and pvT data.

Table 2. Main properties of the polyoxymethylene (POM) grade.

Property	Unit	Value	Test Method
Density	kg/m ³	1410	ISO 1183
Melt volume rate (T of 190 °C, load of 2.16 kg)	cm ³ /10min	24	ISO 1133
Melting temperature	°C	166	ISO 11357-1, -2, -3

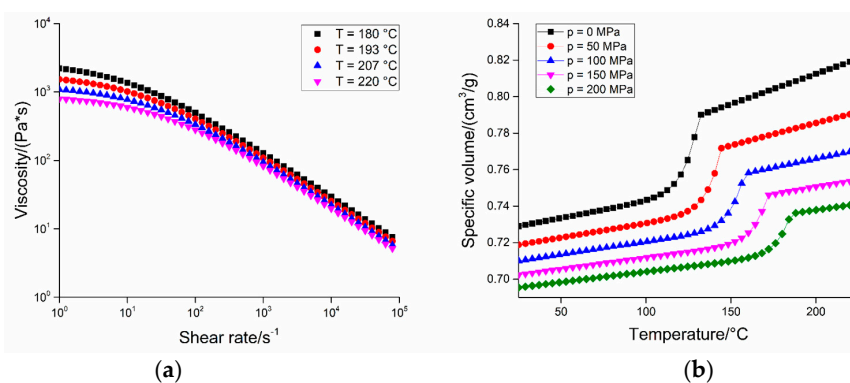


Figure 4. Viscosity plot at different temperatures (a) and pvT data at different pressures (b) for the polyoxymethylene (POM) grade.

In order to identify the best product and process fingerprints, an experimental campaign was carried out by varying the main μ IM process parameters. Such a study was necessary since, as already anticipated, both the product and process fingerprints must be sensitive enough to process settings variations in order to function as optimization tools. Moreover, the data gathered through the experimental campaign were also used to determine the indicator that had the highest level of correlation to part quality, that is, the other characteristic needed to carry out an effective in-line quality control based on process monitoring. Figure 5 shows the flowchart representing the general procedure used for determining the best product and process fingerprints.

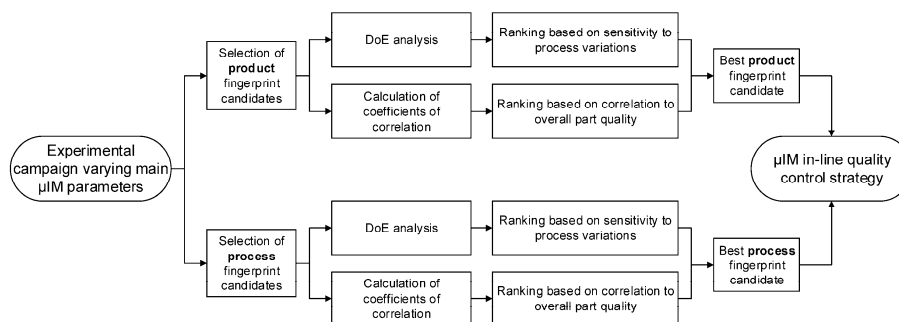


Figure 5. Flowchart representing the identification method for product and process fingerprints. The procedure starts with the selection of product and process fingerprint candidates. Design of Experiments (DoE) and correlation analyses allow for the determination of the best candidates and for the definition of the micro-injection moulding (μ IM) in-line control strategy.

A Design of Experiments (DoE) approach was adopted. Four process parameters, namely holding pressure, injection speed, mould temperature and melt temperature were varied according to a two-level full factorial design. Such variables were selected since they are widely reported in literature to be the ones having the largest influence on the replication capability as well as on the level of shrinkage of moulded products [32–36]. The designed experimental plan allowed for the evaluation of the effects of the single process parameters and of their interactions with the maximum resolution. The levels of the investigated variables were set according to preliminary moulding experiments and the material manufacturer’s recommendations. Table 3 shows the details of the DoE experimental plan. It can be observed that the holding pressure values were set at a relatively low value for μM ; this was adopted in order to avoid an excessive flash formation that would have disabled the part functionality. For each combination of process parameters, the first ten produced parts were discarded and the following five were kept for evaluation, thus making five DoE replicates available for the following analysis.

Table 3. Design of Experiments (DoE) process settings.

Process Parameter	Symbol	Unit	Low Level	High Level
Holding pressure	p_{hold}	bar	250	500
Injection speed	v_{inj}	mm/s	150	350
Mould temperature	T_{mould}	$^{\circ}\text{C}$	100	110
Melt temperature	T_{melt}	$^{\circ}\text{C}$	200	220

2.4. Measurement Strategy and Uncertainty Evaluation

Five dimensional features of the part were selected as product fingerprint candidates and assessed for each of the 80 produced parts. Three of them were functional geometries of the component. These are shown in Figure 6a and are the outer top diameter (ODt), outer bottom diameter (ODb), and inner bottom diameter (IDb). The other two were related to the main defects affecting the part quality: the flash and the gate mark. The flash, as already anticipated, was generated by the presence of the venting channel. The gate mark was caused by the detachment of the feed system from the part by means of the displacement of the middle plate and appeared as an unwanted prolongation in correspondence with the gate area (see Figure 6b). Both defects had to be minimized in order to ensure the part functionality, and therefore their size was a straightforward optimization response and an ideal product fingerprint candidate. The flash and the gate mark were quantified by means of dimensional indicators: the area of the flash, A_{flash} , was used to characterize the flash size, while the length of the gate mark, L_{mark} , was chosen as indicator of the gate mark size (see Figure 6b). Therefore, A_{flash} and L_{mark} both increase when the two defects become larger.

The five product fingerprint candidates were measured on each moulded part with a 3D state-of-the-art focus variation microscope (InfiniteFocus, Alicona Imaging GmbH, Raaba, Austria) using a $20\times$ magnification objective lens. Table 4 reports the main instrument characteristics in the used acquisition mode.

Table 4. Focus variation microscope characteristics.

Instrument Characteristic	Value
Objective magnification	$20\times$
Numerical aperture	0.40
Working distance/mm	13.0
Field of view/ μm	714×542
Digital lateral resolution/ μm	0.44
Declared vertical resolution/nm	0.14

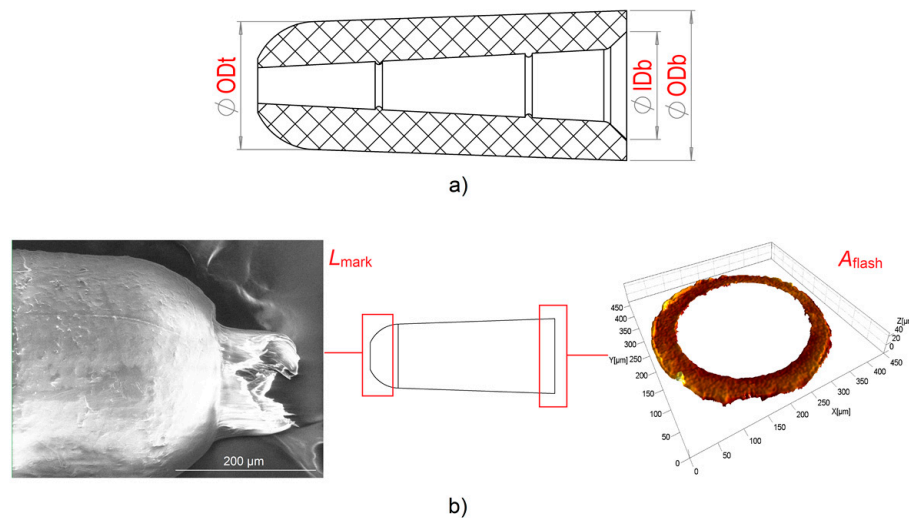


Figure 6. Product fingerprint candidates. (a) The three diameters outer top diameter (ODt), inner bottom diameter (IDb) and outer bottom diameter (ODb). (b) The two part defects and respective size indicators: the area of the flash (A_{flash}) and the length of the gate mark (L_{mark}).

In order to capture the five measurands, two acquisitions were carried out for each moulded sample. The top side of the part, i.e., its left side in Figure 1, was acquired and then the measurands, ODt and L_{mark} were extrapolated. The bottom of the part, i.e., its right side in Figure 1, was instead acquired to measure ODb, IDb and A_{flash} . The five measurands were then extracted from the 3D optical reconstructions using a dedicated image processing software (MountainsMap[®], Digital Surf, Besançon, France). In detail, the processing was carried out as follows:

- ODt: this diameter was extrapolated from a top acquisition by fitting a circle to the desired points (see Figure 7b).
- L_{mark} : this quantity was measured as the vertical distance between the highest point belonging to the gate mark and the flat surface from which it protruded (see Figure 7c). This surface was identified in the same way for all the moulded parts by considering a constant height with respect to the plane on which the circle with the ODt diameter lay.
- IDb: this diameter was extrapolated from a bottom acquisition by fitting a circle to the desired diameter points (see Figure 8b). The 3D acquisition was initially processed by applying a levelling and a threshold along the Z-axis. In particular, the threshold allowed to accurately identify only the points belonging to the flash surface, thus eliminating the undesired influence of points acquired inside the hole.
- ODb: this diameter was extrapolated in the same way as IDb. As illustrated in Figure 8b, the outer perimeter of the flash was not as circular as the ones identifying ODt and IDb, making the ODb measurement less reliable than the other ones. This was most probably caused by an imperfect positioning of the central pin inside the mould cavity that created an unbalance in the polymer melt flow inside the micro channel.
- A_{flash} : the flash area was measured starting from a bottom acquisition by counting the pixels of the flash surface. After the number of pixels, N_p , was determined, a simple equation was used:

$$A_{\text{flash}} = N_p \times A_p \quad (1)$$

where A_p is the area of one pixel, equal to $0.442 \mu\text{m}^2$. Even though both ODb and A_{flash} are indicators of the size of the flash affecting the bottom of the part, the second one is more representative since it is not affected by any circularity error and therefore is more sensitive to any variation of the defect size.

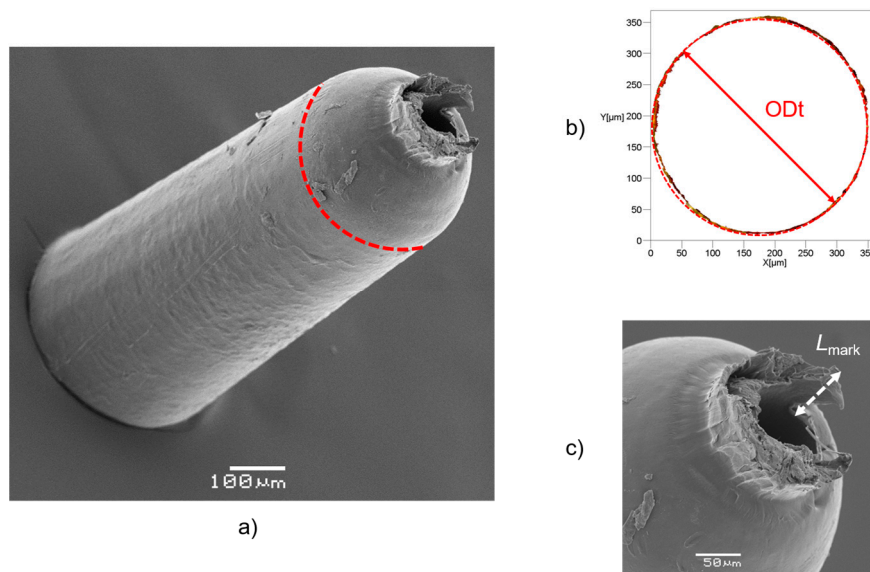


Figure 7. (a) SEM image of a moulded part; outer top diameter (ODt) is indicated in red. (b) Measurement of ODt. (c) Definition of L_{mark} .

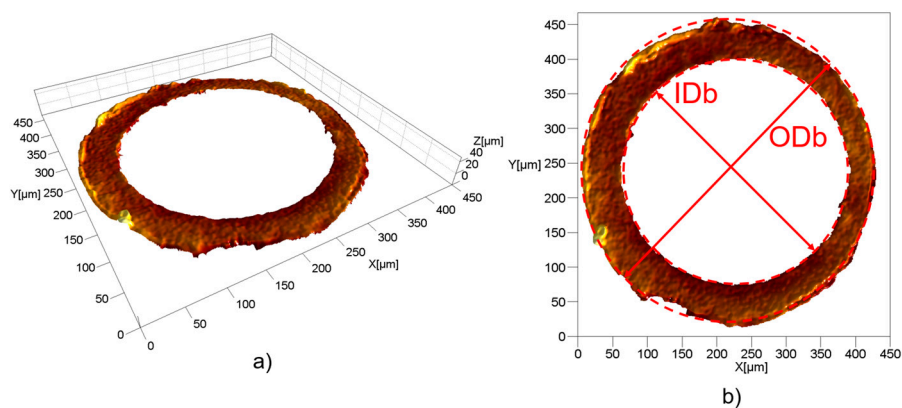


Figure 8. (a) 3D acquisition of the bottom of a moulded part. (b) Measurement of inner bottom diameter (IDb) and outer bottom diameter (ODb).

For all moulded parts, each acquisition was repeated three times, and the average of each extracted measurand was taken as output in order to minimize the influence of the instrument repeatability.

The mould geometries corresponding to the three diameters were also measured to provide a reference for calculating the replication capability of the μIM process. In fact, when evaluating replication technologies, especially in the micro-scale and nano-scale where machining accuracy becomes a very challenging task, the knowledge of the master dimensions is of paramount importance to assess the process capabilities [23]. The mould diameters corresponding to ODb and IDb were measured with the aforementioned focus variation microscope by acquiring the hole on the insert and the pin. As for the mould feature correspondent to ODt, no direct measurement procedure was applicable due to the inaccessibility of such a feature for any optical or contact instrument. A fast replication media was therefore used to replicate the internal geometry of the insert. In particular, a brown polyvinylsiloxane (PVS) replication media (AccuTrans[®], Coltene, Cuyahoga Falls, OH, USA) was casted inside the cavity and measured after solidification. Such a method has been demonstrated

to be successfully applicable to indirect measurement tasks where single-digit micrometric accuracy is required [37]. By knowing the mould dimensions, the replication capability Δ_D was defined as follows:

$$\Delta_D = D_{\text{part}} - D_{\text{mould}} \quad (2)$$

where D_{part} and D_{mould} represent a generic diameter, D , measured on the part and the mould respectively. Δ_D is an indicator of the level of accuracy of the μM process, and therefore the three variables Δ_{ODb} , Δ_{IDb} and Δ_{ODt} were considered as responses for the experimental analysis in place of ODb, IDb and ODt.

The quality of the dimensional measurements was verified by calculating the measurement uncertainty, U . Such parameter is used to characterize the dispersion of the values that could be reasonably attributed to the measurand [38] and assumes more relevance when the quality of micro products are evaluated. In fact, the uncertainty-to-tolerance ratio, U/T , becomes much larger when higher precision levels, typical of the micro-scale, are demanded [10]. Moreover, the measurement uncertainty could, if large enough, partially or totally hide the effects of the experimental variables on the measured output [24]. In this study, the uncertainty related to the five measurands was calculated following ISO 15530-3 [39], which is based on the use of a calibrated artefact sharing similar characteristics with the actual measurand. Two different artefacts were used in the investigation: a calibrated circle of nominal diameter equal to 250 μm for the uncertainty of ODb, IDb and ODt and a calibrated step height of 1 mm for the uncertainty of L_{mark} . Four uncertainty contributions were considered for the calculation of U : u_{cal} , equal to the one stated in the calibration certificate of the artefact; u_{res} , due to the resolution of the measurement instrument and calculated by considering a rectangular distribution; u_w , related to the material and manufacturing variations of the actual measurand; and u_p , introduced by the measurement procedure and calculated as a standard deviation of 20 repeated measurements on the calibrated artefact. In particular, u_w was calculated as:

$$u_w = \frac{\max(\mathbf{M}) - \min(\mathbf{M})}{2\sqrt{3}} \quad (3)$$

where \mathbf{M} is the vector containing the three measurement repetitions of a generic one of the five measurands. The expanded uncertainty, U , was finally obtained by combining the contributions:

$$U = k \times (u_{\text{cal}}^2 + u_{\text{res}}^2 + u_w^2 + u_p^2)^{1/2} \quad (4)$$

where the coverage factor k was equal to 2 in order to achieve an approximate confidence interval of 95%. As for A_{flash} , the contributions u_{cal} and u_p were not considered since no calibrated artefact for area measurement was available. Table 5 reports the uncertainty budget for the five measurands involved in the study. It can be seen that for the three diameters, the uncertainty-to-tolerance ratio, U/T , ranged between 11% and 12%; such values are satisfying with respect to the upper recommended limit of 20% [26], especially considering the very narrow tolerance range imposed by the design specifications.

Table 5. Mean values of uncertainty contributions and expanded uncertainty for the five measurands.

Uncertainty Contribution	ODt/ μm	IDb/ μm	ODb/ μm	$L_{\text{mark}}/\mu\text{m}$	$A_{\text{flash}}/\mu\text{m}^2$
u_{cal}	0.50	0.50	0.50	0.45	/
u_{res}	0.13	0.13	0.13	0.04	0.19
u_w	0.19	0.20	0.16	0.73	1.5×10^2
u_p	0.12	0.12	0.12	0.37	/
$U (k = 2)$	1.1	1.1	1.1	1.9	3.0×10^2

2.5. Process Monitoring

During each moulding cycle, two process variables were recorded in-line: the pressure, p , and the velocity, v , of the injection plunger. The two were derived from machine data, and therefore no external sensor was used. Such a type of data is easy to access and available to any machine user, making this analysis particularly interesting for industrial productions, when usually no external sensor is mounted within the moulding machine. In particular, the injection pressure was acquired by means of a strain gauge transducer (Sensorplatte microline, X Sensors AG, Diessenhofen, Switzerland) embedded in the machine and mounted on the back of the injection plunger. The speed of the injection plunger was recorded via the speed of the motor driving the plunger through the control unit of the machine. For both the monitored curves, the frequency of acquisition was set at 167 Hz (equivalent to a sampling interval of 6 ms), corresponding to the maximum value allowed by the machine computer. Pressure and velocity were acquired synchronously by the machine, and therefore the recorded data needed no alignment with respect to the time-scale.

From the first analysis of the acquired profiles, it was clear that the moulding parameter that mostly affected the shape of the p and v curves was the holding pressure. In fact, when the high level of p_{hold} was selected, a monotone increase of injection pressure was always observed (see Figure 9a). The increase culminated in a peak caused by the high pressure drop due to the extremely small dimensions of the gate and the mould cavity. After the switch-over point, which was defined on the machine by assigning a threshold value of injection pressure, p readapted to the negative linear profile of the holding pressure that was set through the machine interface. This profile was chosen since it guaranteed a smooth displacement of the injection plunger. Conversely, when the low value of p_{hold} was selected, the injection pressure always showed a point of discontinuity in its profile (see Figure 9b). This behaviour was caused by the plunger suddenly decelerating and then accelerating again. This was because, when moulding with p_{hold} equal to 250 bar, the cavity was not filled at the defined switch-over point, thus causing a pressure decrease. After this, the plunger accelerated again during the holding phase, completed the filling, as witnessed by the presence of the pressure peak, and readapted to the imposed negative holding pressure profile. The different level of p_{hold} influenced the velocity profiles as well. When moulding with a holding pressure of 500 bar, the plunger accelerated until v reached the value of the selected v_{inj} and then stopped in correspondence with the switch-over point (see Figure 10a). On the other hand, when moulding with p_{hold} equal to 250 bar, v suddenly decreased at some point, and then increased again until the final stopping (see Figure 10b). This discrepancy was due, as for the case of p , to the decrease in pressure and the consequent piston deceleration that occurred when the cavity was not filled at the defined switch-over point.

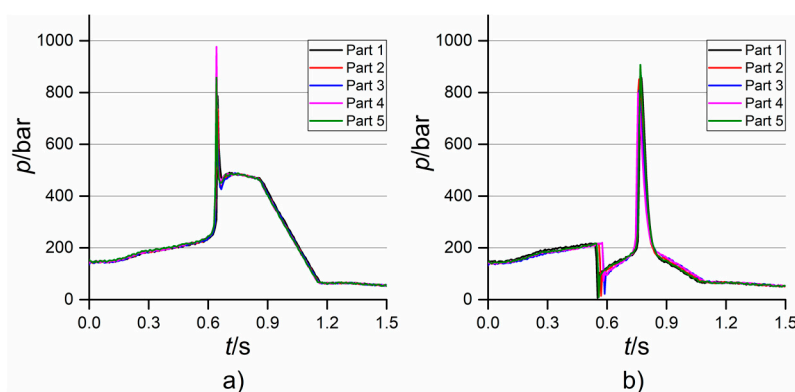


Figure 9. Injection pressure profiles recorded when moulding at: (a) high holding pressure and (b) low holding pressure. v_{inj} was equal to 150 mm/s in both cases.

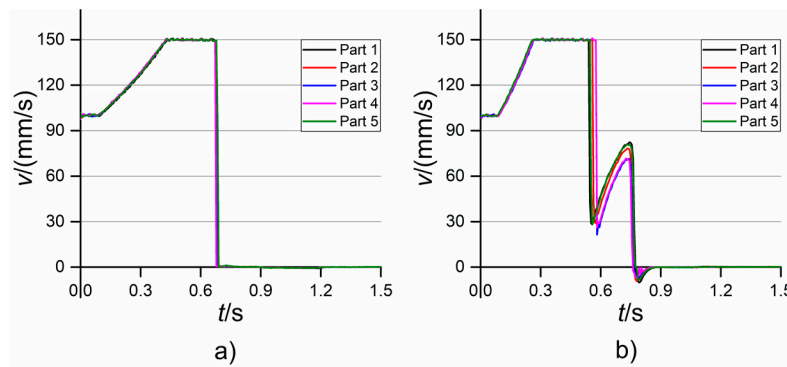


Figure 10. Injection velocity profiles recorded when moulding at: (a) high holding pressure and (b) low holding pressure. v_{inj} was equal to 150 mm/s in both cases.

Once p and v were acquired, their dependence on μIM parameters was studied by identifying some indicators that acted as process fingerprint candidates. In this case, variables that well characterized the shape and main features of both the pressure and velocity curves were selected. In particular, the process fingerprint candidates derived from the injection pressure curves were the following:

- p_{\max} : this quantity was defined as the maximum value for each recorded p curve. Being the pressure peak due to the small size of the channels, this is an indicator related to the filling behaviour of the cavity.
- p_{mean} : this value was calculated as the average pressure in the time interval between the start and the end of the moulding cycle (points A and C in Figure 11a). This quantity provides average information on the pressure acting during one moulding cycle.
- I_p : this is the integral of the pressure in the peak region. The peak region was identified as the time interval spanning from the abrupt increase of p , correspondent to the start of the filling, and the point where the injection pressure adapted to the holding pressure profile given in input to the machine. Therefore, this quantity is related to the amount of energy provided by the injection plunger during the filling phase and is expected to be very process-dependent since the filling of the cavity is usually highly influenced by variations of the μIM process parameters. In particular, I_p was calculated by applying the trapezoidal rule:

$$I_p = dt \times \sum_{t=t_A}^{t_B} \frac{p(t) + p(t + dt)}{2} \quad (5)$$

where t is the time, t_A and t_B are the times correspondent to points A and B respectively (see Figure 11a), and dt is the sampling interval of 6 ms correspondent to the sampling frequency of 167 Hz.

- $I_p/\Delta t$: this quantity is equal to the integral mean of p in the peak region, i.e., I_p divided by the integration range $\Delta t = t_B - t_A$ (see Figure 11a). Such a variable differs from I_p since it is not influenced by the range of integration, i.e., the duration of the filling phase. $I_p/\Delta t$ is thus an indicator of the average p acting during the pressure peak.

From the injection velocity curves, two indicators were extracted:

- v_{mean} : the mean velocity calculated as the average of the v values in the time interval between the start of the acceleration of the plunger and its stop at the switch-over point (point D to point F in Figure 11b), i.e., when v starts decreasing towards a null velocity. This quantity is therefore related to the average velocity that characterized the filling phase of the moulding cycle.

- v_{slope} : the slope of the velocity curve between the start and the end of the acceleration (point D to point E in Figure 11b). This value is equal to the constant acceleration assumed by the plunger to reach the selected v_{inj} value.

The maximum value of v was not taken into account in the investigation since it was equal to the selected v_{inj} and therefore only dependent on that μIM parameter.

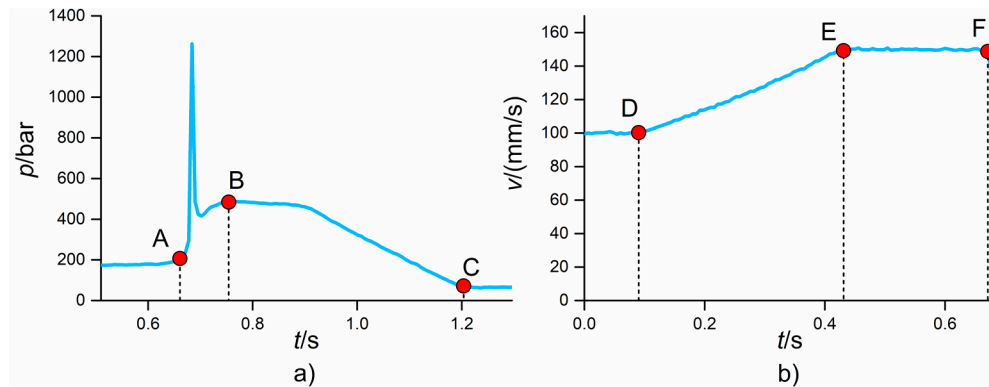


Figure 11. Pressure (a) and velocity (b) curves with points indicating the time intervals used for calculating the process fingerprints candidates. The position of the points was determined by tracking changes of the slope using the first-order derivative value.

3. Results and Discussion

3.1. Product Fingerprint Analysis

Figure 12 reports the results of the analysis for the five product fingerprint candidates. The main effects plot and the Pareto chart of the effects are shown: these two graphs allow for the determination of which process parameter had a significant influence on the response in a robust statistical way. In both the plots, interval bars are shown. In the main effects plots, they represent the expanded measurement uncertainty (see Table 5) that must be taken into account when evaluating the effects of process variation on a measurand. In fact, the variability of the process could be entirely covered by the measurement uncertainty, especially for micro manufacturing processes where the induced dimensional variations are typically in the micrometre range [23]. In the Pareto charts, the interval bars represent the standard deviation of the effects obtained by running five separate analyses for the five DoE replicates. The evaluation of such a variability is important since it quantifies the repeatability of the conclusions drawn from the Pareto chart; a low standard deviation of an effect leads to the conclusion that the significance of that effect is robust with respect to process repeatability. In particular, an effect whose interval bar overlaps with the significance limit cannot be considered as significant.

Figure 12a shows the results for Δ_{ODt} . For this output, the most significant process parameter was T_{melt} ; its increase led to a decrease in replication fidelity by $2.5 \mu\text{m}$. Considering the measurement uncertainty, the other three μIM process parameters did not have a relevant influence on the measured output. As for second-order interactions, only the one between T_{melt} and v_{inj} had a relevant impact on Δ_{ODt} , given that its standardized effect was larger than the significance limit and its standard deviation bar was not overlapping with it.

Figure 12b reports the results for the replication of IDb. On average, the replicated IDb was $14.0 \mu\text{m}$ smaller than the master. This shrinkage level was very similar to that of ODt. The mould temperature was the only significant process parameter. In particular, increasing T_{mould} from $100 \text{ }^\circ\text{C}$ to $110 \text{ }^\circ\text{C}$ led to a decrease in replication level. Such a behaviour, which may seem opposite to the usual enhancement of replication obtained when increasing mould temperature, was already observed

in the literature when internal features, i.e., pins, were replicated [23]. The Pareto chart of the effects revealed that only the second-order interaction between T_{mould} and T_{melt} was significant.

Δ_{ODb} was more sensitive to process variations than the previous measurands (see Figure 12c). In particular, variations in p_{hold} , v_{inj} , and T_{mould} led to an increase in the output that was bigger than the measurement uncertainty. In this case, the results assumed positive values since ODb is the diameter of the circle that identifies the perimeter of the flash formed at the end of the flow (see Figure 8); the replicated diameter was larger than the correspondent one of the micro cavity. Increasing any of the investigated process parameters had a positive effect on Δ_{ODb} and consequently on the flash size. The reason for this is to be found in polymer rheology. When using the high mould temperature, the viscosity of the polymer melt inside the cavity was reduced, thus providing a better replication of the cavity features and, in this case, a bigger flash. The same effect was obtained when increasing the injection speed; the viscosity of the melt was reduced thanks to the shear thinning behaviour of thermoplastic polymers such as POM, thus achieving a longer flow path inside the venting channel that resulted in a larger flash and consequently a larger ODb. Finally, increasing the holding pressure allowed more material to enter the cavity, thus increasing the flash size. These findings were also confirmed by the Pareto chart, which also showed that the second-order interaction between T_{mould} and p_{hold} had a significant impact on the measured response. Similar effects of the μIM process parameters on the flash size were also reported in [40].

The area of the flash, A_{flash} , showed the same trends as Δ_{ODb} (see Figure 12d). This was expected since the two dimensional outputs both have a direct relationship with the flash size. However, the measurement uncertainty was less influent in this case. Moreover, according to the Pareto chart, p_{hold} can be considered more significant than in the case Δ_{ODb} since the standard deviation of its standardized effect does not overlap with the significance limit. Differently from the previous case, the second-order interaction between the mould and the melt temperature was also influent. Therefore, it can be concluded that A_{flash} was more sensitive to process variations than Δ_{ODb} , thus representing a more suitable product fingerprint candidate based on the flash size.

Figure 12e shows the results for the gate mark length, L_{mark} . The size of this defect was on average equal to 82 μm , which is relevant if compared to the overall component dimensions (see Figure 1). All four investigated process parameters had a significant influence on L_{mark} according to the main effects plot and Pareto chart. In particular, an increase in the variables led to a decrease in the defect size, demonstrating that such a product fingerprint was very sensitive to μIM settings variations. The holding pressure showed the largest impact, since the use of 500 bar provided parts having on average a 30 μm shorter gate mark than those moulded with p_{hold} equal to 250 bar. In order to further inspect the effects of μIM on this defect, SEM images of parts manufactured with different DoE combinations were taken and compared (see Figure 13). It can be observed that when moulding with the low levels of the four parameters, the gate mark was very evident, almost occluding the upper hole of the component and thus disabling its functionality. A zone of deformation was clearly visible around the defect, meaning that the mechanism that generated the defect was a ductile breakage caused by the detachment of the gate from the part. Setting the μIM parameters at a high level allowed a great reduction of the gate mark size (see Figure 13b,c) and of the area of deformation. Finally, selecting the high levels of all the four process variables generated parts almost free of the defect. The great influence of the process conditions on the gate mark size and appearance may have been caused by a change in the crystallinity of the polymer. In particular, moulding with high levels of the process parameters may have impeded the formation of crystals because of the more drastic cooling rate, thus decreasing the mechanical properties and in turn facilitating the brittle detachment of the gate from the part. It is worth noting that p_{hold} , v_{inj} , T_{mould} and T_{melt} had an opposite effect on the size of A_{flash} and L_{mark} , i.e., the two defects affecting the part quality. This means that a simultaneous minimization of the two defects was impossible inside the investigated experimental range.

The analysis of the effects of the μIM parameters on the five product fingerprint candidates allowed some conclusions to be made. In particular, the best candidates with respect to the characteristic

of process sensitivity were A_{flash} and L_{mark} ; both were greatly influenced by all the four investigated parameters and can therefore serve to tune the process with the aim of optimizing the quality of the produced parts.

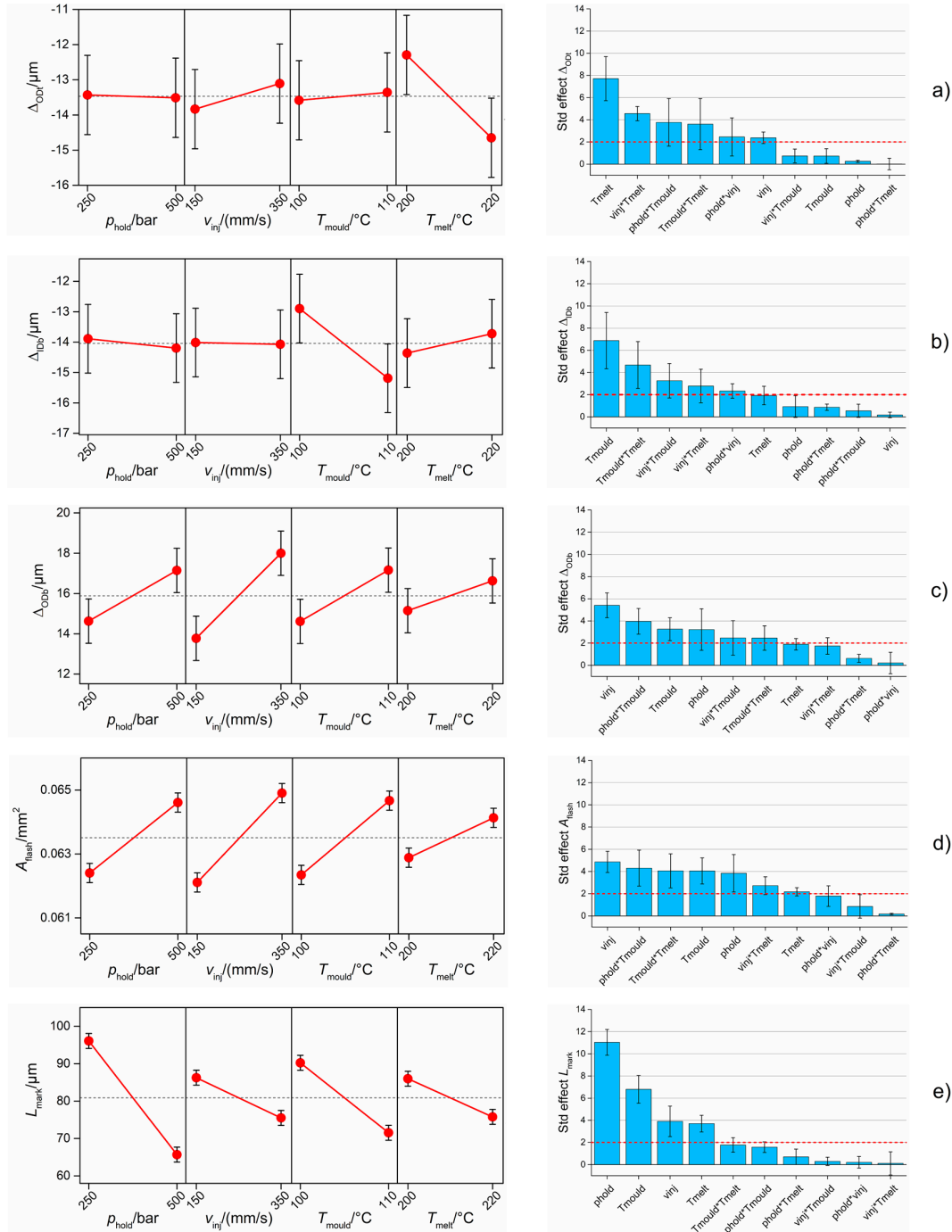


Figure 12. Influence of the μ IM process on the five product fingerprint candidates: (a) Δ_{ODT} , (b) Δ_{IDb} , (c) Δ_{ODb} , (d) A_{flash} and (e) L_{mark} . Main effects plot (left column) and Pareto chart of standardized effects (right column) are reported. The interval bars represent the expanded measurement uncertainties, U , in the main effects plots and the standard deviations of five Pareto analyses for the five DoE replicates in the Pareto charts. The red dashed line in the Pareto chart is the significance level at 95% of confidence level.

Along with the sensitivity to process variation, the other characteristic that an effective product fingerprint must have is the correlation to the overall part quality. This is necessary to guarantee an efficient quality control based only on the measurement of a single fingerprint. In order to identify the best fingerprint candidate with respect to this requirement, a correlation analysis was carried out. In particular, the coefficient of correlation, ρ , was calculated for each couple of measurands. ρ was calculated as follows:

$$\rho(\mathbf{x}, \mathbf{y}) = \frac{\sum(x - \bar{x})(y - \bar{y})}{\sqrt{\sum(x - \bar{x})^2 \sum(y - \bar{y})^2}} \quad (6)$$

where \mathbf{x} and \mathbf{y} are generic vectors containing two datasets and \bar{x} and \bar{y} are their respective mean values. Such a coefficient can vary between -1 and $+1$, where the first describes a perfect negative correlation and the second a perfect positive correlation. A ρ equal to 0 indicates that no correlation exists between the two examined sets of values. In this study, ρ was calculated by considering all the 80 values derived from the DoE campaign for each of the five measurands.

Figure 14 shows the correlation coefficients calculated for the ten couples of product fingerprint candidates. It can be seen that the greatest correlation ($\rho = 0.9$) was the one between Δ_{ODb} and A_{flash} . The two measurands are in fact strictly related to the flash size, as explained before. Therefore, an increase in one determined an increase in the other and vice versa, meaning that controlling only one of them allowed for the monitoring of both the geometrical outputs. A second group of coefficients of correlation ranging from -0.5 to -0.4 can be identified. A_{flash} and L_{mark} shared in fact a ρ equal to -0.5 , demonstrating that a significant amount of correlation existed between these two product fingerprint candidates. This was also mirrored in the main effects plots (see Figure 12) where it was clear how the four investigated process parameters had an opposite effect on the two defect sizes. Significant negative correlations were also observed between Δ_{ODb} and L_{mark} and between Δ_{IDb} and A_{flash} . The second one was due to the geometry of the flash; a decrease in IDb resulted in an increase in the flash area according to its definition (see Figure 8). The other coefficients of correlation were all lower than 0.3 in absolute value and thus negligible if compared to the others.

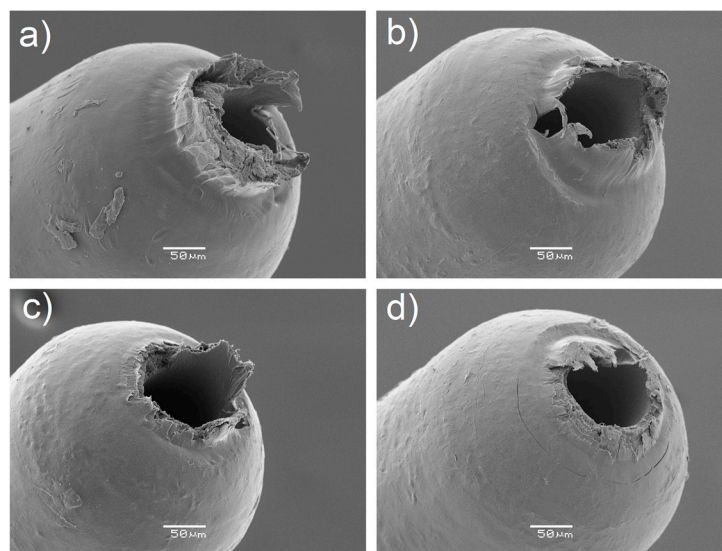


Figure 13. Gate mark appearance for different combinations of process parameters: (a) was moulded with low levels of T_{melt} , p_{hold} , T_{mould} , and v_{inj} ; (b) was moulded with low levels of p_{hold} , T_{mould} , and v_{inj} ; (c) was moulded with low levels of p_{hold} ; and (d) was moulded with high levels of the four process parameters.

From this analysis, it can be concluded that the product fingerprint candidate that was the most correlated to the overall part quality was A_{flash} since its values were the ones that showed high

levels of ρ in combination with three other measurands, namely Δ_{ODb} , L_{mark} , and Δ_{IDb} . Therefore, by controlling only this dimensional characteristic of the moulded part, the best control over the overall part quality can be carried out. Considering also the requirement of sensitivity to process settings variations, the best product fingerprint for the specific part under analysis was the flash area, followed by the length of the gate mark. Such quality indicators must be related to in-line, monitored process variables in order to function in a fast and comprehensive μ IM assurance strategy.

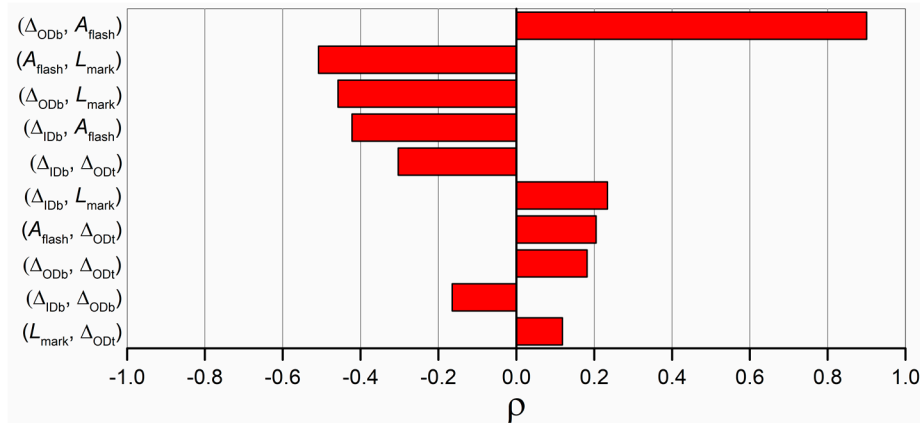


Figure 14. Values of the coefficients of correlation calculated between each couple of measured datasets. Values were sorted largest to smallest in absolute value.

3.2. Process Fingerprint Analysis

A similar type of analysis was carried out to identify the best process fingerprint candidate among the six indicators derived from the monitored pressure and velocity curves with respect to sensitivity to process variations. In this case, the main effects plots were represented with interval bars equal to the standard errors calculated among the values related to the particular combination of process parameters.

Figure 15a shows the results for p_{max} . This indicator depended mainly on the selected p_{hold} and v_{inj} values. Particularly, an increase in both the holding pressure and the injection speed resulted in an increase of the maximum injection pressure. The effect of v_{inj} can be explained by considering that flowing a fluid with a higher speed requires a higher pressure. The effect of p_{hold} is, on the other hand, due to the used modality of switch-over; as already anticipated, the machine was set to switch from the filling phase to the holding one when a certain pressure was reached. Therefore, when selecting a higher p_{hold} , the injection pressure was allowed to rise more before switching to the holding profile. The second-order interaction between p_{hold} and v_{inj} was also significant.

p_{mean} was predominantly influenced by the holding pressure (see Figure 15b). This was caused by the fact that p_{mean} was calculated as the average p among the entire moulding cycle (see Figure 11a). The averaging operation, in fact, minimized the relevance of the peak phase, making the holding phase preponderant, and thus p_{hold} became the most significant term. All the other effects, second-order interactions included, were negligible with respect to the holding pressure significance.

Figure 15c illustrates the effect of μ IM process parameters on I_p . This fingerprint candidate was mainly influenced by holding pressure. The second most significant effect was that of v_{inj} . The reason for this is similar to the one explained when commenting on p_{max} dependence on the process variations. In fact, the integral of p in the peak region was strongly influenced by the p peak. However, in this case, there was a larger sensitivity with respect to other process parameters such as T_{mould} , which had a larger impact on the results. However, considering the interval bars of both the main effects plot and the Pareto chart, the mould temperature cannot be considered as significant for I_p .

$I_p/\Delta t$ showed a process dependence very similar to I_p (see Figure 15d). However, the operation of normalizing the pressure integral over the integration range considerably diminished the relevance of

v_{inj} while enhancing that of T_{mould} , which was significant according to the Pareto chart even though the interval bars of the main effects plot slightly overlapped. This may have been caused by the fact that changing the injection velocity setting had an impact on the duration of the peak region and therefore on the filling time. In particular, increasing the mould temperature resulted in an increase in $I_p/\Delta t$. This is somehow unexpected since increasing T_{mould} usually decreases the polymer viscosity and therefore the pressure needed to drive the melt through the cavity channels. As for the previous case, second-order interactions of v_{inj} had a significant effect on this output.

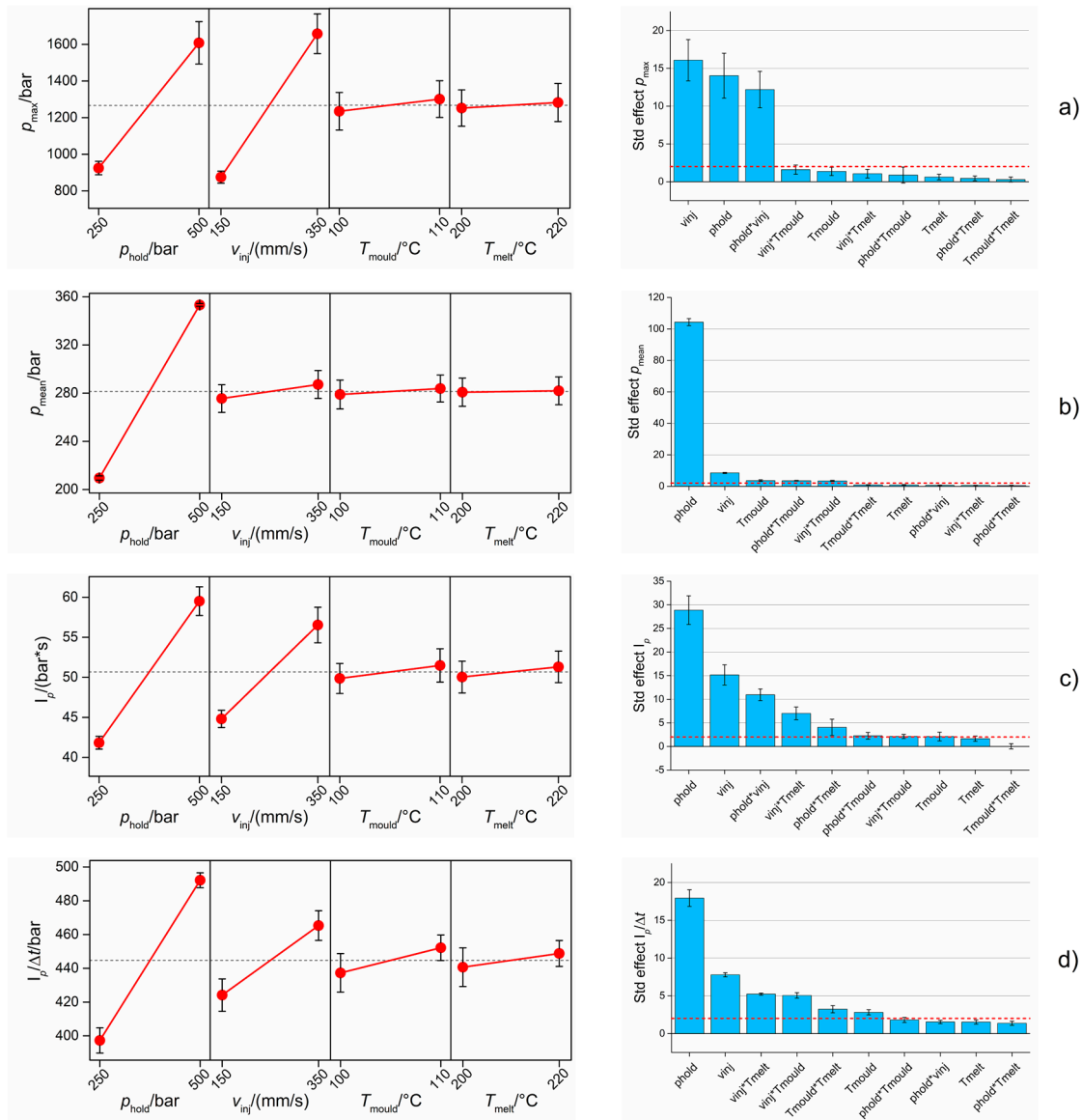


Figure 15. Influence of μM process on the four process fingerprint candidates derived from monitored injection pressure curves: (a) p_{max} , (b) p_{mean} , (c) I_p and (d) $I_p/\Delta t$. Main effects plot (left column) and Pareto chart of standardized effects (right column) are reported. The interval bars represent the standard errors in the main effects plots and the standard deviations of five Pareto analyses for the five DoE replicates in the Pareto charts. The red dashed line in the Pareto chart is the significance level at 95% of confidence level.

Figure 16a shows the results for v_{mean} , whose value was influenced mostly by v_{inj} , p_{hold} and their interaction. Increasing the injection speed had a positive effect on v_{mean} , since a higher velocity plateau

was recorded. Increasing the holding pressure had the same effect; this was caused by the fact that when moulding at the high level of p_{hold} , no deceleration of the plunger, and therefore no decrease in speed during the filling phase, was observed (see Figure 10b). The significance of the interaction was caused by the fact that when using high p_{hold} , an increase in injection speed led to a larger increase in v_{mean} than when using a low p_{hold} . In fact, the deceleration behaviour was similar when using both high and low v_{inj} .

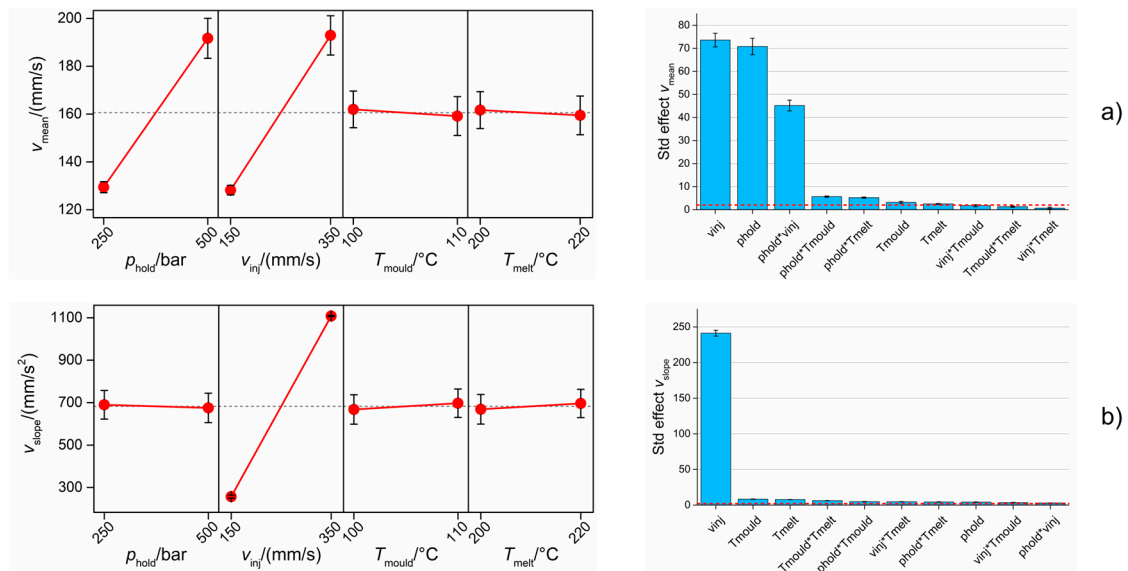


Figure 16. Influence of μ IM process on the two process fingerprint candidates derived from monitored injection velocity curves: (a) v_{mean} and (b) v_{slope} . Main effects plot (left column) and Pareto chart of standardized effects (right column) are reported. The interval bars represent the standard errors in the main effects plots and the standard deviations of five Pareto analyses for the five DoE replicates in the Pareto charts. The red dashed line in the Pareto chart is the significance level at 95% of confidence level.

v_{slope} depended mainly on the value of the injection speed (see Figure 16b). In particular, moulding at a high v_{inj} determined a substantial increase in the plunger acceleration from 260 mm/s² to 1100 mm/s². This means that when a higher v_{inj} was selected, the machine motor provided the plunger with a higher acceleration in order to reach it.

From this analysis, it can be concluded that holding pressure and injection speed were the most influencing parameters for the six process fingerprint candidates derived from monitored injection pressure and velocity curves. On the other hand, mould and melt temperature variations were in most cases not significant in determining the level of the responses. This was because pressure and velocity were both measured at the injection plunger location. Quantities measured inside the mould with external sensors proved in fact to be more sensitive to T_{melt} and T_{mould} variations [18]. Only the integral mean of the pressure, $I_p / \Delta t$, showed a relevant dependence on T_{mould} , making this indicator the best process fingerprint candidate among those extracted from the p and v curves with respect to the sensitivity to μ IM process variations. In fact, by in-line monitoring $I_p / \Delta t$, variations of holding pressure, injection speed and mould temperature can be observed and quantified.

In order to investigate the relation between $I_p / \Delta t$ and the part quality, which is a fundamental characteristic of a process fingerprint to allow an effective in-line quality monitoring, the same approach used for the product fingerprint correlation analysis was adopted. In particular, the coefficient of correlation, ρ , was calculated using Equation (6) among $I_p / \Delta t$ and the five dimensional measurands.

Figure 17 shows the results. The correlation coefficient values appear as divided in two distinct subgroups: one made of ρ values calculated for L_{mark} , Δ_{ODb} and A_{flash} , which were all larger than 0.7 in absolute value, and the other made of ρ values calculated for Δ_{IDb} and Δ_{ODt} . This means that

$I_p/\Delta t$ was highly correlated with the size of the gate mark and the flash, i.e., the defects affecting part quality, and with the dimension of ODb, which was in turn highly related to L_{mark} and A_{flash} (see Figure 14). On the other hand, the other two measurands showed no relevant link with the integral mean of p , being the correlation coefficients values equal to -0.25 and 0.21 for Δ_{IDb} and Δ_{ODt} respectively. These findings proved that $I_p/\Delta t$, besides being sensitive to variations in μIM process parameters, was also correlated to the two best product fingerprint candidates, namely the flash area and the length of the gate mark. Therefore, it can act as the bridge between process monitoring and part quality, representing the link needed to perform a faster and more comprehensive assurance of the investigated moulded component.

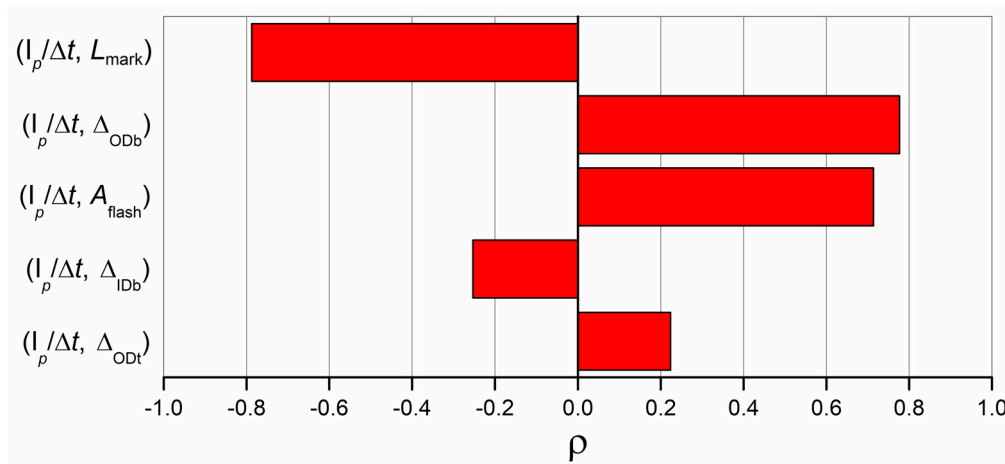


Figure 17. Values of the coefficients of correlation calculated between $I_p/\Delta t$ and the five dimensional measurands. Values were sorted largest to smallest in absolute value.

Figure 18 shows the plots of gate mark and flash sizes against $I_p/\Delta t$. It can be observed that there indeed existed a relation among the data. In particular, there is an almost linear correlation between L_{mark} and the integral mean. The data also show a limited dispersion around the depicted linear trend, demonstrating that the relation between the two variables was robust inside the investigated experimental range. Since the trend is negative, a higher $I_p/\Delta t$ determined a smaller gate mark on the moulded parts. This finding agrees with the opposite slopes of the main effects plots for the two variables (see Figures 12e and 15d). By controlling the process fingerprint, an accurate control on the size of this defect can be performed: $I_p/\Delta t$ must be kept at values around 500 bar if the size of the gate mark has to be minimized. Conversely, $I_p/\Delta t$ equal to 300 bar generated a defect having double the size. In regards to the size of the flash, indicated by the A_{flash} value, a positive relation was observed. Therefore, lower $I_p/\Delta t$ values were needed to minimize the size of this defect; the lower the pressure applied during filling, the smaller the flash on the component. As already anticipated, the minimization of both defects was not possible within the investigated process parameters ranges. In this case, the data were more dispersed than for L_{mark} , resulting in a less precise and accurate prediction. However, the general data trend is still evident, as shown by the high coefficient of correlation of 0.71 (see Figure 17). As A_{flash} correlated to most of the other dimensional measurands (see Figure 14), the optimization of the part quality can be effectively carried out by monitoring $I_p/\Delta t$ for every moulding cycle, thus assessing the quality of all moulded parts.

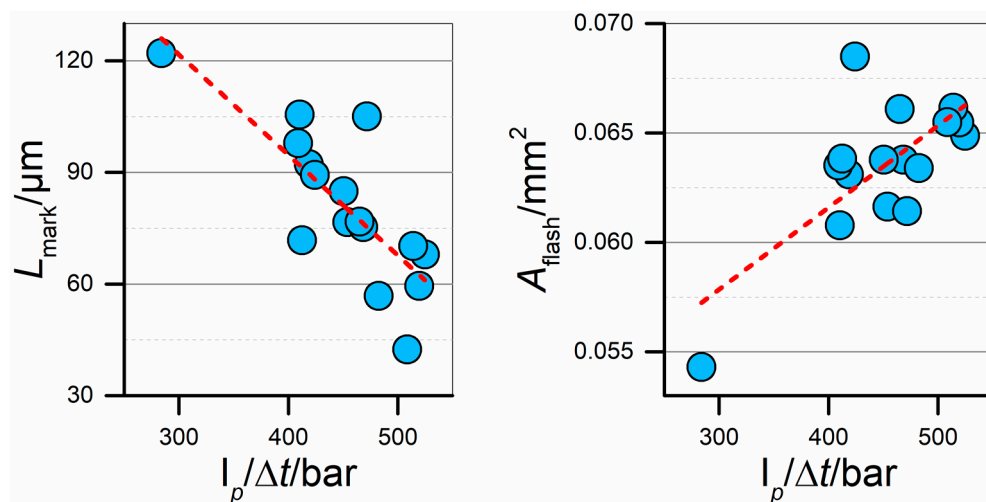


Figure 18. Correlation plots of the two defect size indicators against $I_p/\Delta t$. Red dashed lines represent linear trends. Each point represents the average of the five DoE replicates.

4. Conclusions

The present paper aimed at applying and validating a new optimization concept based on the product and process fingerprints of the μIM process of a micro medical component. The best product and process fingerprint candidates were identified by considering two characteristics: sensitivity to process variations and correlation to part quality. Optical metrology and process monitoring using no external sensors were, for the first time in reported literature, successfully combined to provide an in-line optimization strategy in μIM .

The following conclusions are drawn from the study:

- The variation of μIM process settings had a relevant impact on the quality of the micro component. In particular, the flash area and the length of the gate mark showed the largest sensitivity.
- Varying the four investigated process parameters had an opposite effect on the size of the two defects: an increase in the flash size always came with a decrease in the gate mark size and vice versa. Their simultaneous minimization was therefore not possible to obtain within the investigated process window, posing a great challenge with respect to quality optimization.
- The morphology of the gate mark was deeply influenced by the selected process settings. In particular, a zone of deformation was clearly visible only when moulding with low levels of the parameters, thus significantly increasing the size of the defect.
- The flash area was the measurand with the highest level of correlation to part quality. By measuring the effects of μIM parameters on such indicators, robust conclusions can be made also on three other measurands, namely ODb , L_{mark} and IDb . Therefore, A_{flash} represented the best product fingerprint candidate for the analysed component.
- The indicators extracted from in-line monitored injection and velocity curves were mostly influenced by p_{hold} and v_{inj} . The only one that showed a significant dependence on another parameter, namely T_{mould} , was the mean integral of the pressure during filling, $I_p/\Delta t$. This variable increased when selecting the high levels of the μIM parameters. Being the most sensitive among the investigated process indicators, it was chosen as the best process fingerprint.
- $I_p/\Delta t$ showed a significant correlation with three measurands. In particular, the size of both the defects could be effectively controlled by monitoring the $I_p/\Delta t$ value for each moulding cycle. Such a discovery demonstrated that in-line process optimization in μIM can be carried out by means of a robust monitoring strategy in order to make sure that all the manufactured components have dimensions within the desired range.

Future work will be dedicated to the application of a similar approach to different types of moulded samples such as micro structured and nano structured surfaces. This will extend the validity of this approach to other dimensional ranges and classes of components.

Author Contributions: F.B. conceived and designed the experiments; F.B. performed experiments and measurements; F.B., M.C. and G.T. analysed the data; F.B. wrote the paper; M.C. and G.T. revised the paper.

Acknowledgments: This research work was undertaken in the context of MICROMAN project (“Process Fingerprint for Zero-defect Net-shape MICROMANufacturing”, <http://www.microman.mek.dtu.dk/>). MICROMAN is a European Training Network supported by Horizon 2020, the EU Framework Programme for Research and Innovation (Project ID: 674801).

Conflicts of Interest: The authors declare no conflict of interest.

References

1. Brousseau, E.B.; Dimov, S.S.; Pham, D.T. Some recent advances in multi-material micro- and nano-manufacturing. *Int. J. Adv. Manuf. Technol.* **2010**, *47*, 161–180. [[CrossRef](#)]
2. Giboz, J.; Copponnex, T.; Mélé, P. Microinjection molding of thermoplastic polymers: A review. *J. Micromech. Microeng.* **2007**, *17*, R96–R109. [[CrossRef](#)]
3. Whiteside, B.; Martyn, M.T.; Coates, P.D.; Greenway, G.; Allen, P.S.; Hornsby, P. Micromoulding: Process measurements, product morphology and properties. *Plast. Rubber Compos.* **2004**, *33*, 11–17. [[CrossRef](#)]
4. Yang, C.; Yin, X.-H.; Cheng, G.-M. Microinjection molding of microsystem components: New aspects in improving performance. *J. Micromech. Microeng.* **2013**, *23*, 1–21. [[CrossRef](#)]
5. Alting, L.; Kimura, F.; Hansen, H.N.; Bissacco, G. Micro Engineering. *CIRP Ann.-Manuf. Technol.* **2003**, *52*, 635–657. [[CrossRef](#)]
6. Sha, B.; Dimov, S.; Griffiths, C.; Packianather, M.S. Micro-injection moulding: Factors affecting the achievable aspect ratios. *Int. J. Adv. Manuf. Technol.* **2007**, *33*, 147–156. [[CrossRef](#)]
7. Vera, J.; Brulez, A.-C.; Contraires, E.; Larochette, M.; Trannoy-Orban, N.; Pignon, M.; Mauclair, C.; Valette, S.; Benayoun, S. Factors influencing microinjection molding replication quality. *J. Micromech. Microeng.* **2018**, *28*, 15004. [[CrossRef](#)]
8. Surace, R.; Bellantone, V.; Trotta, G.; Fassi, I. Replicating capability investigation of micro features in injection moulding process. *J. Manuf. Process.* **2017**, *28*, 351–361. [[CrossRef](#)]
9. Sha, B.; Dimov, S.; Griffiths, C.; Packianather, M.S. Investigation of micro-injection moulding: Factors affecting the replication quality. *J. Mater. Process. Technol.* **2007**, *183*, 284–296. [[CrossRef](#)]
10. Tosello, G.; Hansen, H.N.; Gasparin, S. Applications of dimensional micro metrology to the product and process quality control in manufacturing of precision polymer micro components. *CIRP Ann.-Manuf. Technol.* **2009**, *58*, 467–472. [[CrossRef](#)]
11. Surace, R.; Bellantone, V.; Trotta, G.; Basile, V.; Modica, F.; Fassi, I. Design and Fabrication of a Polymeric Microfilter for Medical Applications. *J. Micro Nano-Manuf.* **2015**, *4*, 11006. [[CrossRef](#)]
12. Masato, D.; Sorgato, M.; Parenti, P.; Annoni, M.; Lucchetta, G. Impact of micro milling strategy on the demolding forces in micro injection molding. *J. Mater. Process. Technol.* **2017**, *246*, 211–223. [[CrossRef](#)]
13. Chen, Z.; Turng, L.S. A review of current developments in process and quality control for injection molding. *Adv. Polym. Technol.* **2005**, *24*, 165–182. [[CrossRef](#)]
14. Michaeli, W.; Schreiber, A. Online control of the injection molding process based on process variables. *Adv. Polym. Technol.* **2009**, *28*, 65–76. [[CrossRef](#)]
15. Speranza, V.; Vietri, U.; Pantani, R. Monitoring of injection moulding of thermoplastics: Adopting pressure transducers to estimate the solidification history and the shrinkage of moulded parts. *Strojniški Vestnik/J. Mech. Eng.* **2013**, *59*, 677–682. [[CrossRef](#)]
16. Tsai, K.-M.; Lan, J.-K. Correlation between runner pressure and cavity pressure within injection mold. *Int. J. Adv. Manuf. Technol.* **2015**, 14–23. [[CrossRef](#)]
17. Mendibil, X.; Llanos, I.; Urreta, H.; Quintana, I. In process quality control on micro-injection moulding: The role of sensor location. *Int. J. Adv. Manuf. Technol.* **2016**. [[CrossRef](#)]
18. Griffiths, C.A.; Dimov, S.; Scholz, S.G.; Hirshy, H.; Tosello, G. Process Factors Influence on Cavity Pressure Behavior in Microinjection Moulding. *J. Manuf. Sci. Eng.* **2011**, *133*, 31007. [[CrossRef](#)]

19. Griffiths, C.A.; Dimov, S.S.; Scholz, S.G.; Tosello, G.; Rees, A. Influence of Injection and Cavity Pressure on the Demoulding Force in Micro-Injection Moulding. *J. Manuf. Sci. Eng.* **2014**, *136*, 31014. [[CrossRef](#)]
20. Griffiths, C.A.; Dimov, S.S.; Brousseau, E.B. Microinjection moulding: The influence of runner systems on flow behaviour and melt fill of multiple microcavities. *Proc. Inst. Mech. Eng. Part B J. Eng. Manuf.* **2008**, *222*, 1119–1130. [[CrossRef](#)]
21. Griffiths, C.A.; Dimov, S.S.; Scholz, S.; Tosello, G. Cavity Air Flow Behavior During Filling in Microinjection Molding. *J. Manuf. Sci. Eng.* **2011**, *133*, 11006. [[CrossRef](#)]
22. Zhiltsova, T.V.; Oliveira, M.S.A.; Ferreira, J.A. Integral approach for production of thermoplastics microparts by injection moulding. *J. Mater. Sci.* **2012**, *48*, 81–94. [[CrossRef](#)]
23. Baruffi, F.; Calaon, M.; Tosello, G. Effects of micro-injection moulding process parameters on accuracy and precision of thermoplastic elastomer micro rings. *Precis. Eng.* **2018**, *51*, 353–361. [[CrossRef](#)]
24. Tosello, G.; Gava, A.; Hansen, H.N.; Lucchetta, G. Study of process parameters effect on the filling phase of micro-injection moulding using weld lines as flow markers. *Int. J. Adv. Manuf. Technol.* **2010**, *47*, 81–97. [[CrossRef](#)]
25. Hakimian, E.; Sulong, A.B. Analysis of warpage and shrinkage properties of injection-molded micro gears polymer composites using numerical simulations assisted by the Taguchi method. *Mater. Des.* **2012**, *42*, 62–71. [[CrossRef](#)]
26. Ontiveros, S.; Yagüe-Fabra, J.A.; Jiménez, R.; Tosello, G.; Gasparin, S.; Pierobon, A.; Carmignato, S.; Hansen, H.N. Dimensional measurement of micro-moulded parts by computed tomography. *Meas. Sci. Technol.* **2012**, *23*, 125401. [[CrossRef](#)]
27. Bellantone, V.; Surace, R.; Trotta, G.; Fassi, I. Replication capability of micro injection moulding process for polymeric parts manufacturing. *Int. J. Adv. Manuf. Technol.* **2012**, *67*, 1407–1421. [[CrossRef](#)]
28. Mélé, P.; Giboz, J. Micro-injection molding of thermoplastic polymers: Proposal of a constitutive law as function of the aspect ratios. *J. Appl. Polym. Sci.* **2018**, *135*, 45719. [[CrossRef](#)]
29. Annicchiarico, D.; Attia, U.M.; Alcock, J.R. A methodology for shrinkage measurement in micro-injection moulding. *Polym. Test.* **2013**, *32*, 769–777. [[CrossRef](#)]
30. Masato, D.; Sorgato, M.; Lucchetta, G. Analysis of the influence of part thickness on the replication of micro-structured surfaces by injection molding. *Mater. Des.* **2016**, *95*, 219–224. [[CrossRef](#)]
31. Vella, P.C.; Dimov, S.S.; Brousseau, E.; Whiteside, B.R. A new process chain for producing bulk metallic glass replication masters with micro- and nano-scale features. *Int. J. Adv. Manuf. Technol.* **2014**, *76*, 523–543. [[CrossRef](#)]
32. Griffiths, C.A.; Dimov, S.S.; Brousseau, E.B.; Hoyle, R.T. The effects of tool surface quality in micro-injection moulding. *J. Mater. Process. Technol.* **2007**, *189*, 418–427. [[CrossRef](#)]
33. Attia, U.M.; Alcock, J.R. Evaluating and controlling process variability in micro-injection moulding. *Int. J. Adv. Manuf. Technol.* **2011**, *52*, 183–194. [[CrossRef](#)]
34. Annicchiarico, D.; Attia, U.M.; Alcock, J.R. Part mass and shrinkage in micro injection moulding: Statistical based optimisation using multiple quality criteria. *Polym. Test.* **2013**, *32*, 1079–1087. [[CrossRef](#)]
35. Lucchetta, G.; Sorgato, M.; Carmignato, S.; Savio, E. Investigating the technological limits of micro-injection molding in replicating high aspect ratio micro-structured surfaces. *CIRP Ann.-Manuf. Technol.* **2014**, *63*, 521–524. [[CrossRef](#)]
36. Masato, D.; Rathore, J.; Sorgato, M.; Carmignato, S.; Lucchetta, G. Analysis of the shrinkage of injection-molded fiber-reinforced thin-wall parts. *Mater. Des.* **2017**, *132*, 496–504. [[CrossRef](#)]
37. Baruffi, F.; Parenti, P.; Cacciatore, F.; Annoni, M.; Tosello, G. On the Application of Replica Molding Technology for the Indirect Measurement of Surface and Geometry of Micromilled Components. *Micromachines* **2017**, *8*, 195. [[CrossRef](#)]
38. Joint Committee for Guides in Metrology (JCGM). *Evaluation of Measurement Data: Guide to the Expression of Uncertainty in Measurement*; JCGM: Paris, France, 2008.

39. ISO. 15530-3: *Geometrical Product Specifications (GPS)—Coordinate Measuring Machines (CMM): Technique for Determining the Uncertainty of Measurement*; ISO: Geneva, Switzerland, 2011.
40. Eladl, A.; Mostafa, R.; Islam, A.; Loaldi, D.; Soltan, H.; Hansen, H.; Tosello, G. Effect of Process Parameters on Flow Length and Flash Formation in Injection Moulding of High Aspect Ratio Polymeric Micro Features. *Micromachines* **2018**, *9*, 58. [[CrossRef](#)]



© 2018 by the authors. Licensee MDPI, Basel, Switzerland. This article is an open access article distributed under the terms and conditions of the Creative Commons Attribution (CC BY) license (<http://creativecommons.org/licenses/by/4.0/>).