



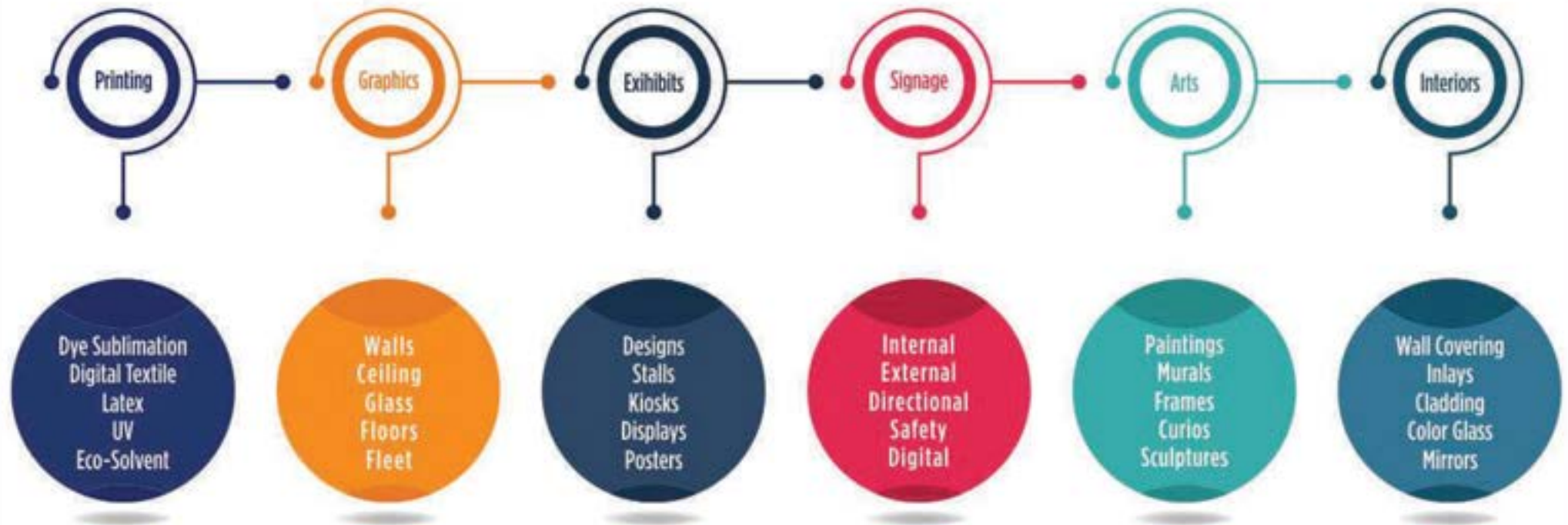
**CONTACT : + 971 55 645 7003**

**info@gallerymermaid.com | www.mermaiddigital.com**



**ART & ARTEFACTS | WOODCRAFT | ACCESSORIES | SCULPTURE**

## MERMAID CAPABILITIES





- \* Fabric
- \* Canvas
- \* Wallpaper
- \* Glass
- \* Metal
- \* Wood
- \* Ceramic
- \* Light Boxes
- \* Kiosk
- \* Exhibition Stands
- \* Flags Poles



- \* Paintings, Artworks
- \* Prints / Artistic Embellishments
- \* Murals
- \* Art Installation
- \* Framing
- \* Sculptures
- \* Artefacts
- \* Decorative Mirrors
- \* Decorative Accessories
- \* Decorative wall arts
- \* 3D Wall arts
- \* Planters & Pots
- \* Customized Artworks



- \* Wayfinding Signage
- \* Indoor Signage
- \* Outdoor Signage
- \* Retail Signage
- \* Molded Signage
- \* Digital Signage
- \* Fabrication Solutions
- \* Poles & Structures
- \* Large Format LED Boards
- \* Facade Lighting
- \* Design Consultancy

## WHO WE ARE

- \* Pioneers of **DIGITAL FABRIC PRINTING** since 2005
- \* Largest digital printing facility with production house in **INDIA** and **MIDDLE EAST**
- \* We offer a wide range of services from design consulting to in - house production and **TURNKEY PROJECT MANAGEMENT**
- \* Production Area; **100,000 SQ FT IN DUBAI AND BENGALURU**
- \* State of the art **PRINTING MACHINERIES WITH LATEST TECHNOLOGY**
- \* Fully equipped **SIGNAGE FABRICATION WORKSHOP** with skilled manpower
- \* Large stocks of imported fabric media and accessories
- \* Achieved many awards and recognition including 3 **GUINNESS WORLD RECORDS**
- \* Aluminum portable **FABRIC DISPLAY SYSTEM** manufacturing unit
- \* quality and process improvements initiatives with **ISO AND ERP** solutions

## MANAGEMENT

Mermaid Group is managed by a team of highly qualified and experienced professionals in their respective fields. Having known each other for more than 25 years, this group of entrepreneurs has managed to build a team of brilliant brains who together make the Mermaid family. Though conservative in our approach, we empower the task owners and at the same time give utmost attention to every detail. With a perspective of such potency, we have remained the undisputed industry leaders for over a decade.

From elaborately advising on the product's specification to ensuring quality execution of production, our team of professionals will always ensure the desired output. Marking our presence in the International market, quality control and customer satisfaction are of profound significance to us.

## MISSION

To build on our history of being a complete art solution providers and supporting our customers with superior products and services in the art and decoration industry

## VISION

To be acknowledged as a global leader and trend setting organization in the field of creative art and decor.

# GALLERY MERMAID TECHNICAL WORKS LLC HSE AND WASTE MANAGEMENT PLAN

## 1.1 ENVIRONMENT, HEALTH, SAFETY AND WASTE MANAGEMENT PLAN

Gallery Mermaid is committed towards Preservation of Nature & Natural Resources. Safety of our Employee Co-workers is of utmost importance to us. To uphold our ethical values & integrity, GalleryMermaid has devised various in house policies that the company follows with reference to EHS and Waste Management. Some of the policies are listed below: It is the duty of Gallery Mermaid Technical Works LLC to: Prepare and when appropriate, revise a written statement of its general policy with respect to the health and safety of its employees at work. It is the responsibility of the organization to bring any revision of the policy to the notice of all our employees. Carry out its responsibility in such a way that persons not in its employment who may be affected thereby are not exposed to risk their health or safety.

### IT IS THE DUTY OF EACH EMPLOYEE TO ENSURE THAT:

- \*Any plant or substance in the premises is safe and without risk to health & safety to other persons present,
- \*To design, manufacture, import or supply any article for use at work.
- \*To ensure that the article so designed and constructed are safe and without risk to health when properly used
- \*To take such steps that are necessary to ensure that there is adequate information available about any conditions necessary to ensure safety at work environment.

## GALLERY MERMAID TECHNICAL WORKS LLC HSE AND WASTE MANAGEMENT PLAN

No person shall intentionally or recklessly interface with or misuse anything provided in to the interests of health, safety or welfare in pursuance of any of the relevant provisions

Gallery Mermaid is committed to protecting the environment and the health and safety of our employees, contractors, customers, and the public by conducting our business in a safe and environmentally sustainable manner.

We are committed to complying with all applicable governmental regulations and internal Company equipment's. Our Company will maintain management systems designed to assure continue EHS compliance and support continuous performance improvement as per the guidelines established by EHS department.

Gallery Mermaid will conduct Should be regular evolutions to monitor EHS compliance and performance at all our offices. In support of our Company's mission we are the well being of all involved the production of human health and prevention of population, and will integrate fundamental principles of resource conservation in to our business processes, facilities, operation, and products.

Our Company will work with Government, industry and the public in support of regulations and programs that promote EHS excellence and address area of EHS practices among our suppliers, contractors, and customers. We will also work with academic and governmental instructions to promote research that supports and advance EHS progress and knowledge for the common good.

# GALLERY MERMAID TECHNICAL WORKS LLC HSE AND WASTE MANAGEMENT PLAN

Our Company will foster open communications and dialogue on the work place health, safety, and environmental issues with our stake holders and will respond to their EHS concerns and suggestions Our employees work in many different settings. Much work on customer sites and construction projects and many also work in offices or out of the field. In all of these environments, workplace safety is important

## 1.2 PREVENTING WORKPLACE ACCIDENTS AND ILLNESSES ZERO INJURIES.

Zero illness. This is our goal. The design of our safety and hygiene programs helps in maintaining a talented, productive workforce. It ensures the uninterrupted delivery of our products and services to our customers.

- Our safety programs cover:
- Machine safety
- Warehouse safety
- Electrical safety
- Hazardous processes
- Office safety
- Contractor safety

# GALLERY MERMAID TECHNICAL WORKS LLC HSE AND WASTE MANAGEMENT PLAN

## 1.3 PROTECTION OF EXISTING WORKS

All site working practices are reviewed prior to work on site by the Project Manager and the Installation Manager and are subject of relevant meetings prior to commencement of the work. These practices are offered to the Construction Manager for commencement. Due care and consideration is taken for the protection of existing works. Staff competent to carry out any specific task is authorized to do so. All work is authorized by the designated Site Manager. The nature of the equipment is such that for long term reliable operation it must be installed in a suitably clean environment.

For the installation of the artwork and UV print products, the key precautions are with regard to the handling of the materials through the site to the position of the final location. Most of our materials are of a delicate nature, therefore, come in quite late in the project program. All materials are protected during carriage and where hoisting equipment is necessary, it is located in such a way as not to cause damage to adjacent structures or materials. In many of these specific areas, a detailed Method Statement and/or Risk Assessment are produced, as appropriate

## 1.4 Safe working methods

Gallery Mermaid Technical Works LLC is experienced with working on construction sites with demanding safety requirements. Prior to commencement of work on site, we finalize our site safety plan. As a part of this safety plan, we convene a series of meetings to discuss and finalize our approach and site methods, to allow us to proceed with designs. In particular we pay specific consideration to the following:

## GALLERY MERMAID TECHNICAL WORKS LLC HSE AND WASTE MANAGEMENT PLAN

- i. Working at Height There may be a number of activities of our work that will involve working at height. This work is envisaged to be carried out from either step ladders or possibly a small zip up tower where appropriate, safety harnesses are utilized by all staff working at height. This is a high risk area of our work and is treated as such throughout the duration of the project.
- ii. Working from temporary Structures Prior to commencing any activity on a temporary structure, we ensure that it is properly constructed in accordance with the manufacturer's instructions and that it is properly restrained to a suitable structure where appropriate.
- iii. Existing Installations Where our work requires that we interfere with an existing installation, we ensure that we are fully familiar with the nature of that installation and that the interface method is suitable for the purpose intended. Special attention is paid to areas of high risk.
- iv. Energizing New works Prior to energizing new works we carry out a visual and electrical test of the circuits to be energized. We also inform the construction manager and any necessary authority of our intentions to do so.
- v. Permit to Work Systems on New Works We do not carry out any work on new jobs unless the necessary permits have been obtained beforehand.
- vii. Protection of the Works As far as possible, we prevent the access to our work by others for the purpose of safety to others and for the protection of the equipment. We label hazardous or delicate equipment accordingly.
- viii. Co-ordination with Others We advise, via the construction manager, other trades that we are required to coordinate with, of any of our work that is hazardous by nature. We provide drawings and descriptions of our work and request the same of others such that the coordination is fully assessed prior to the commencement of work on the site.

## GALLERY MERMAID TECHNICAL WORKS LLC HSE AND WASTE MANAGEMENT PLAN

ix. Working with Fire Risk Equipment As a part of working with electronic equipment it is necessary from time to time to make electrical connections by means of solder joints. This procedure involves heating the solder material and the components to be joined to temperatures in excess of 350°Celsius. On site, this is achieved by the use of a soldering iron, either electric or gas fuelled. Where ever possible, we shall avoid the use of solder joints by selecting connectors that are terminated by either crimp pins (such as Elcosor crimp 'D') or screw terminals. In addition we shall carry out majority of pre-terminators at our factory. We believe that this approach will greatly minimize the use of 'hot' tools on site.

x. Others In addition to these specific safety considerations, we ensure that all of our site operatives are encouraged to take every possible precaution in consideration of the site safety. These precautions include but are not limited to:

- \* Daily clearance of rubbish at all times and when a large delivery of equipment is made, all rubbish will be cleared immediately to the skips provided.
- \* Full compliance with requests from any member of Client Team carrying out the enforcement of health and safety matters. Safety talks and initial site safety briefing to ensure that all staffs are conversant with fire, accident, medical and emergency procedures.
- \* Provision of personal safety equipments including hard hats and harnesses.
- \* Provision of a 1-5 man first aid kit.

# GALLERY MERMAID TECHNICAL WORKS LLC HSE AND WASTE MANAGEMENT PLAN

## 1.5 SAFETY TALKS

Talks Site safety talks are held covering topics relevant to work that is due to be implemented. The subjects include but are not limited to:

- \* Working Dress
- \* Fire Prevention
- \* Safe use of ladders and steps
- \* DO's and Don'ts on scaffold
- \* Working on scaffold, safety bars
- \* Use of mobile when working on platforms, safety bars, chains
- \* Fall protection
- \* Reporting accidents, incidents and near misses
- \* Site tidiness
- \* Eye protection and Foot protection
- \* Use of hand tools and portable electronic tools
- \* Basic First Aid specific to site
- \* Changes to working environment, new trades.

# GALLERY MERMAID TECHNICAL WORKS LLC HSE AND WASTE MANAGEMENT PLAN

## CORPORATE AND SOCIAL RESPONSIBILITY

We demonstrate corporate and social responsibility and leadership by operating all facilities and services to the highest environmental and professional standards. Gallery Mermaid Technical Works is committed to meeting the following aims:

- \* Regularly monitor and review performance and set clear objectives and targets to ensure continuous improvement in health and safety, environmental and welfare performance and quality service provision.
- \* Reduce negative impacts on the environment and augment positive impacts whilst taking all necessary steps to prevent pollution.
- \* Minimize the risks of accidents and incidents which might threaten the well being of our employees, customers and contractors by ensuring all activities are carried out safely and in accordance with the company's separate health and safety policy.
- \* Identify and implement health and safety, environmental and welfare service quality improvement schemes to the benefit of employees, customers and stakeholders wherever possible.
- \* Use energy and natural resources more efficiently and encouraging the development and use of alternative fuels and recycled products.
- \* Promote and encourage waste awareness and prevention, re-use, recycling and good practice.

## GALLERY MERMAID TECHNICAL WORKS LLC HSE AND WASTE MANAGEMENT PLAN

- \* Adopt a genuine partnership approach in delivering quality service solutions.
- \* All operating units will have appropriate arrangements and resources in place to implement, identify and comply with all applicable legislation, including environmental, health and safety and other requirements including recognized industry best practice.
- \* Require all employees to be aware of their responsibilities for health and safety, environmental and quality issues.
- \* Provide training, information, and support for all employees to fulfill their obligations and gain a better understanding of the company's commitment, policies and programs and to develop and enhance their careers and personal development in line with company objectives.
- \* To gain and retain registration to the Investors In people standard as it applies to the company's operations.
- \* Proactive consultation and dialogue with the public, stakeholders and employees and the company's environmental, health and safety performance and service quality.
- \* Effectively communicating this policy to all employees, external resources, and members of the public and other stakeholders. This Policy Statement and IMS are periodically reviewed in order to ensure continued suitability and to identify and fulfill opportunities for improving its effectiveness.

# GALLERY MERMAID TECHNICAL WORKS LLC HSE AND WASTE MANAGEMENT PLAN

## DRUGS &ALCOHOL POLICY

Gallery Mermaid Technical Works LLC is committed to protecting the health and safety of all individuals affected by our activities, as well as the communities in which we live and operate. We recognize that the use of alcohol and drugs can adversely affect job performance, the work environment and the safety of our employees, contractors and the general public. The policy and its related practices apply to all employees when they are engaged in company business, working on or off company premises, and when driving company vehicles. Gallery Mermaid contractors are expected to develop and enforce Alcohol and Drug Policies and practice that are consistent with this Policy and its related practices.

To minimize the risk of unsafe and unsatisfactory performance due to alcohol or drugs, staff are expected to report fit for work and remain fit for work throughout their work day or shift and when on scheduled call. The following are expressly prohibited while on company business or premises:

- \* The use, possession, distribution and offering for sale of drugs or drug paraphernalia
- \* The unauthorized use, possession, distribution, offering for sale of beverage alcohol
- \* Possession of prescribed medications not authorized for personal use
- \* Reporting for duty with the presence of alcohol in the body or drugs Various investigation and testing procedures defined in the Alcohol and Drug Practices may be used in support of this policy.

## GALLERY MERMAID TECHNICAL WORKS LLC HSE AND WASTE MANAGEMENT PLAN

Gallery Mermaid Technical Works LLC provides prevention, assessment, treatment and aftercare support and resources for employees who suspect they have a substance dependency or an emerging alcohol or drug problem. Employees concerned about or experiencing alcohol or drug problems are encouraged to seek assistance from Gallery Mermaid Technical Works LLC HR team and their personal physician or appropriate community service before job performance is affected or violation occur. Disciplinary action up to and including termination will be taken for violations of this policy and its related practices.



## PAINTINGS



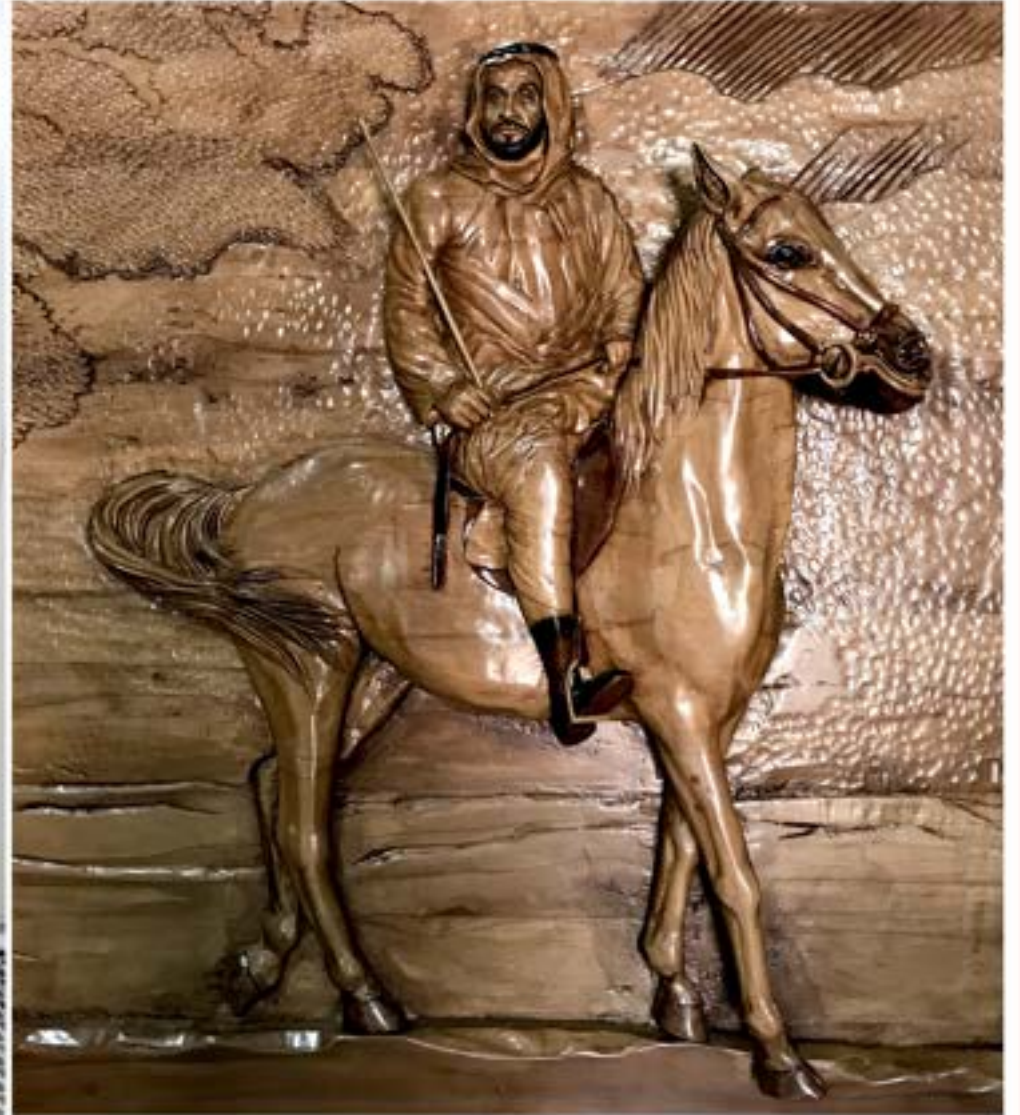
## PORTRAITS Swarovski Crystals



## CUSTOMIZED WALL ARTS



Mother of pearl



Hand Carved

## CANVAS PRINTING & FRAMING



## DECORATIVE MIRRORS



## DECORATIVE MIRROR



## DECORATIVE MIRRORS



## DECORATIVE MIRRORS



## DECORATIVE MIRRORS



## DECORATIVE ACCESSORIES & ARTEFACTS



## DECORATIVE ACCESSORIES & ARTEFACTS



## DECORATIVE ACCESSORIES & ARTEFACTS



## CUSTOMIZED WALLARTS



## CUSTOMIZED WALLARTS



## ART AND ARTEFACTS



## CUSTOMIZED 3D WALL ART AND MIXED MEDIA



## WOODEN SCULPTURE



## GUINNESS FLOWER CARPET

Media Partner





# MAJOR PROJECTS

## COMPLETED PROJECTS

### THE ADDRESS BOULEVARD HOTEL DUBAI

Hotel Guest Rooms, Public Areas and Service apartment

Accessories - 8356

521 Serviced Apartments

196 Guest rooms

Public areas

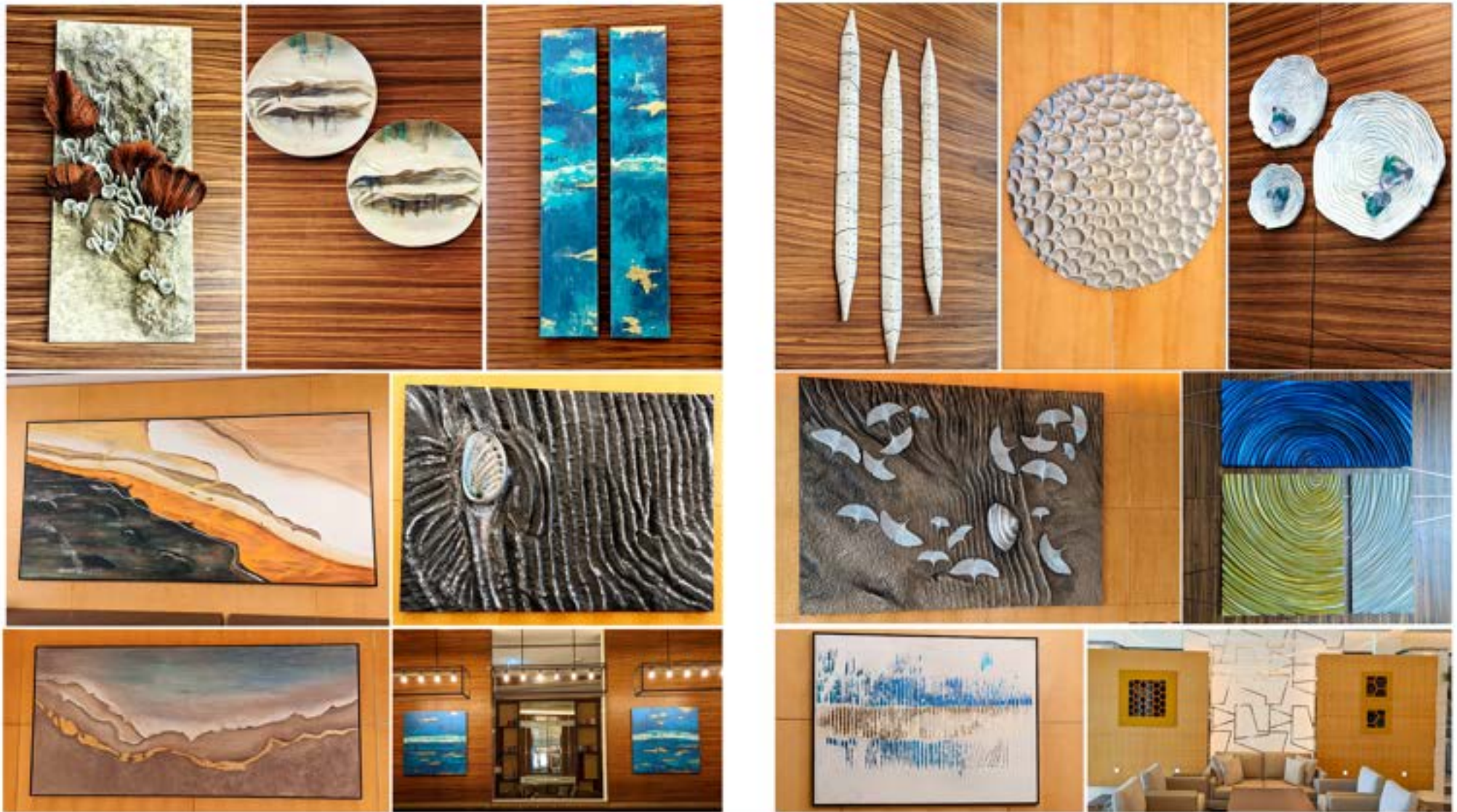


## COMPLETED PROJECTS HILTON DUBAI PALM JUMEIRAH



3D WALL ART , MIXED MEDIA, MULTI LAYERED MIXED MEDIA WALL ART, CUSTOMISED METAL STRIP AND LEAF ARTWORK,  
RESIN FIBRE MIXED MEDIA WALL ART

## COMPLETED PROJECTS HILTON DUBAI PALM JUMEIRAH



3D WALL ART , MIXED MEDIA, MULTI LAYERED MIXED MEDIA WALL ART, CUSTOMISED METAL STRIP AND LEAF ARTWORK,  
RESIN FIBRE MIXED MEDIA WALL ART

## COMPLETED PROJECTS

### WESTIN & W HOTEL DUBAI AL HABTOOR GROUP



- \* 1001 Rooms, Public Area and Restaurants
- \* 7000 + Artworks - paintings and prints embellishments
- \* Wall arts - wood, metal and resin
- \* Sculptures and accessories
- \* Decorative vases
- \* Decor



## COMPLETED PROJECTS

### DUKES OCEANA HOTEL PALM JUMEIRAH DUBAI

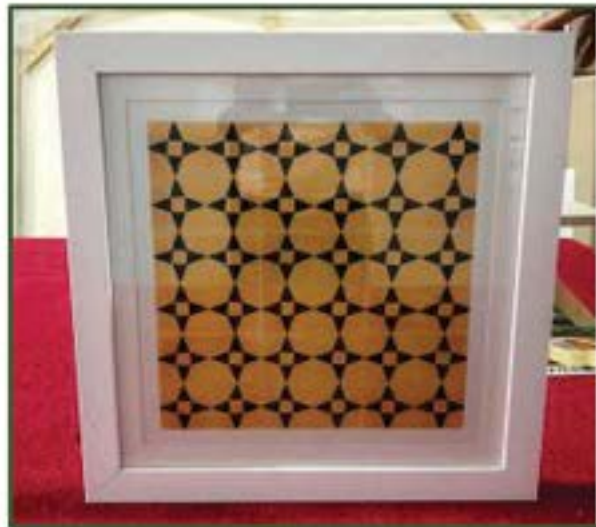
Guest Rooms, Public Areas and Restaurants

- \* Artworks-Paintings and Prints embellishments
- \* Decorative accessories



## COMPLETED PROJECTS GRAND HYATT ABU DHABI

- \* Artworks - Prints embellishments
- \* Accessories and decorative vases



## COMPLETED PROJECTS DAMAC ARTESIA DUBAI

Commerical Rooms, Serviced Apartments and

- \* All Public Areas Decorative accessories and artworks
- \* 1677 Decorative Mirrors
- \* 1599 Accessories
- \* 2506 Artworks



## COMPLETED PROJECTS FRAME MIDDLE EAST GENERAL TRADING L.L.C



PERUVIAN POT

## COMPLETED PROJECTS ROTANA AL MAHA ARJAAN HOTEL ABU DHABI

FARAJ BIN HAMOODAH HOLDING

Guest Rooms, Public Areas and Restaurants

\* 1700 Artworks \_ Paintings and Prints embellishments



## COMPLETED PROJECTS

### RAMADA HOTEL, JBR DUBAI



- Guest Rooms, Public Areas and Restaurants
- \* Artworks - Paintings and Prints embellishment
  - \* Sculptures and accessories
  - \* Decorative vases
  - \* Decore

### DAMAC UPPERCREST DUBAI

- Guest Rooms, Public Areas and restaurants
- \* Artworks - Paintings and prints embellishments
  - \* Decorative vases



## COMPLETED PROJECTS

### RADISSON BLU BUSINESS BAY DOWNTOWN DUBAI

Guest Rooms, Public Areas and Restaurants

- \* Artworks - Paintings and prints embellishments
- \* Decorative vases



### DOUBLE TREE BY HILTON BUSINESS BAY DOWNTOWN DUBAI



Guest Rooms and Public Areas

- \* Artworks - Paintings and Prints
- \* Decorative vases

## COMPLETED PROJECTS

### BAB AL BAHR HOTEL AJMAN

Guest Rooms, Public Areas and Restaurants

- \* Artworks - Paintings and Prints
- \* Sculptures and accessories
- \* Decorative vases
- \* Decore



### HILTON HOTEL JBR DUBAI



Guest Rooms, Public Areas and Restaurants

- \* Artworks - Paintings and Prints embellishments
- \* Sculptures and accessories
- \* Decorative vases

## COMPLETED PROJECTS

### CITY SEASONS

200nos - Guest Rooms  
Artworks and Artefacts



### HILTON SALALAH

260nos - Guest Rooms  
Artworks and Decorative mirrors



## COMPLETED PROJECTS

### RADISSON BLU AJMAN

Special Art Installation - External Mashrabia



### ONE AND ONLY LE SAINT GERAN MAURITIUS



Special Art Installation - Fabric Head Boards  
and MOP inlays

## COMPLETED PROJECTS

### DAMAC PARAMOUNT VILLAS DUBAI

#### Artworks



## COMPLETED PROJECTS

### HILTON JBR DUBAI

### VIDA CREEK HARBOUR EMAAR DUBAI



Refurbishment - Wall covering

### Decorative Mirrors



## COMPLETED PROJECTS MEDIA CITY HOTEL DUBAI

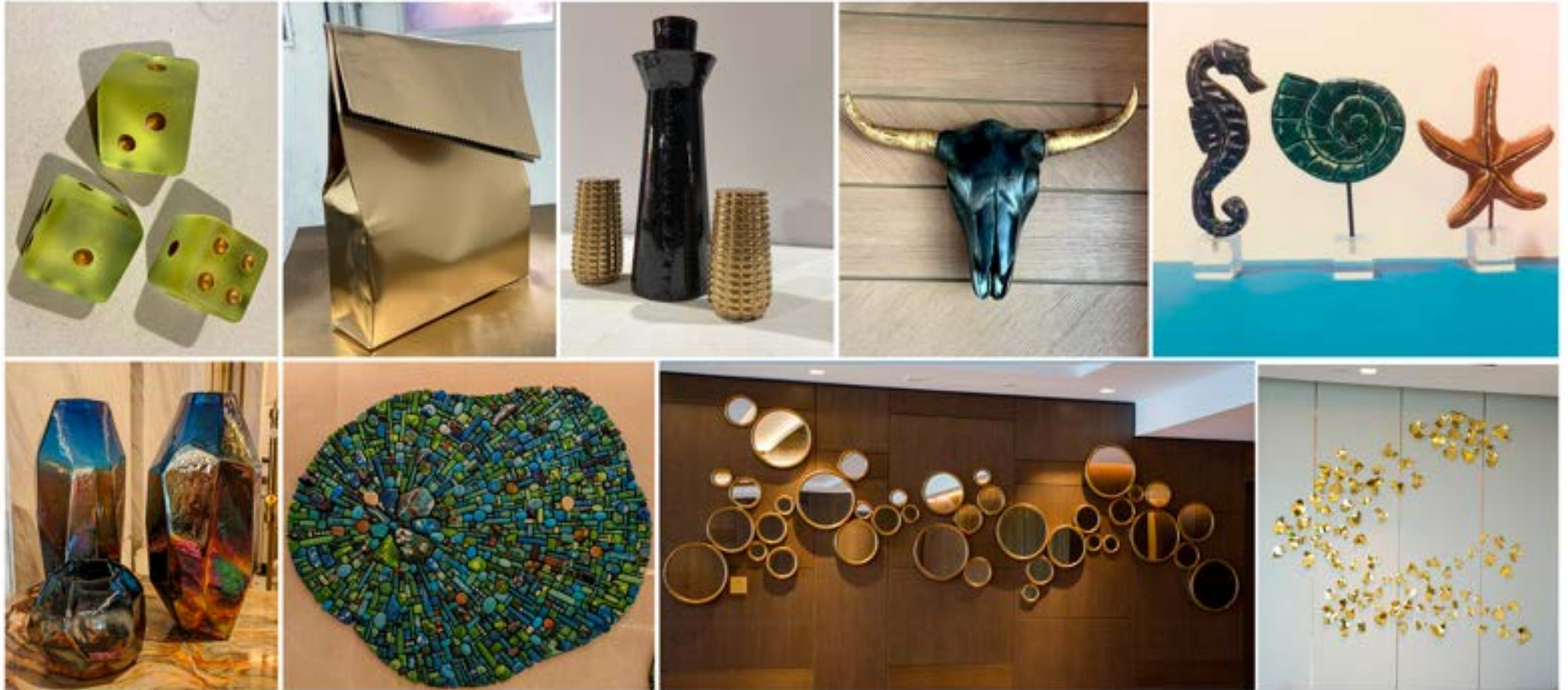


Art Installations - Artefacts



Moulded antique frames and distressed bronze and ceramic 3D wall art , Bohemian culture wall arts ,scul ,pots ,andtt wall decorations , Mixed media wall art strech canvas with L Floater frame , Large scaled ceramic plates , Ceiling 3d art , Engraved wood art , Printed ceiling paper, Parchment screen , Glass decorative accessories , Bronze culture , Resin Sculptures

## COMPLETED PROJECTS TAJ EXOTICA RESORT & SPA, THE PALM, DUBAI



Moulded antique frames and distressed bronze and ceramic 3D wall art, Bohemian culture wall arts, sculptures, pots, and wall decorations, Mixed media wall art stretch canvas with L Floater frame, Large scaled ceramic plates, Ceiling 3d art, Engraved wood art, Printed ceiling paper, Parchment screen, Glass decorative accessories, Bronze culture, Resin Sculptures

## COMPLETED PROJECTS ROMEO INTERIORS FACTORY LLC



## COMPLETED PROJECTS MARRIOTT RESORT PALM JUMEIRAH, DUBAI



## COMPLETED PROJECTS VIDA DUBAI MARINA & YACHT CLUB



## COMPLETED PROJECTS

### Six Senses Southern Dunes Saudi arabia



## COMPLETED PROJECTS

### ROVE HOTEL EXPO 2020

#### Art works & Wallpapers



## COMPLETED PROJECTS

### LEADERSHIP PAVILION EXPO 2020



Signages



## COMPLETED PROJECTS

CROWN PLAZA DUBAI, DEIRA WATER FRONT



Crown Plaza  
Dubai  
Artworks Installation



Deira Water Front  
Art & Decorative Accessories

ADAGIO PALM JUMERIAH

Adagio

Palm Jumeirah  
Art Installations



## COMPLETED PROJECTS

### MEDIA ONE HOTEL DUBAI



Art Installations - Artefacts  
Framed Mosaic Art



### HYDE BUSINESS BAY



Artwork Installation

## COMPLETED PROJECTS

### DOUBLETREE BY HILTON DUBAI M SQUARE HOTEL & RESIDENCES

#### Accessories and Decorative Mirrors



## COMPLETED PROJECTS

### CENTARA MIRAGE BEACH RESORT DUBAI



Wooden Signages



## COMPLETED PROJECTS

FOUNTAIN VIEW - RETAIL EMAAR , DOWNTOWN . DUBAI

### Art & Sculptures Installation



## COMPLETED PROJECTS

MOHAMMED BIN RASHID LIBRARY , JADDAF

Art work Installation



FOUNTAIN VIEWS EMAAR , DUBAI



Art work Installation

## COMPLETED PROJECTS

### MINISTRY OF JUSTICE ABUDHABI

Customized art Installation



### DAMAC AVATI TOWER DUBAI



Customized artworks and  
Decorative mirrors

## ONGOING PROJECTS

### HILTON AND MARRIOTT PALM JUMEIRAH

#### Artwork Installation



### DAMAC - AYKON City



#### Artwork Installation

## ONGOING PROJECTS

### ROYAL ATLANTIS PALM JUMEIRAH

3D wall art



### JEWEL OF THE CREEK DUBAI



Artefacts and Artworks



# **ACHIEVEMENT AWARDS**

## ACHIEVEMENT AWARDS

## OUR MAJOR ACHIEVEMENTS - THE GUINNESS RECORDS



## ACHIEVEMENT AWARDS

## OTHER ACHIEVEMENTS



# CLIENTELE



Department of Tourism  
and Commerce Marketing

**دبي**  
Tourism السياحة



مركز دبي التجاري العالمي  
DUBAI WORLD TRADE CENTRE



malraaq



حكومة دبي  
GOVERNMENT OF DUBAI

هيئة الطرق والمواصلات  
ROADS & TRANSPORT AUTHORITY



حكومة الشارقة  
Government of Sharjah

هيئة الإنماء التجاري  
والسياحي بالشارقة

Sharjah Commerce & Tourism  
Development Authority



هيئة أبوظبي للسياحة والثقافة  
ABU DHABI TOURISM & CULTURE AUTHORITY



**TDIC** TOURISM DEVELOPMENT  
& INVESTMENT COMPANY  
شركة التطوير والاستثمار السياحي

**CROWNE PLAZA**  
HOTELS & RESORTS

**JUMEIRAH**  
GOLF ESTATES

**Jumeirah**  
STAY DIFFERENT™

*Le* **MERIDIEN**

**Radisson** **BLU**

**CROWNE PLAZA**  
HOTELS & RESORTS

**Hilton**

**THE ADDRESS**  
BOULEVARD DUBAI

**DOUBLE TREE**  
BY HILTON™

**GRAND | HYATT**  
ABU DHABI  
HOTEL & RESIDENCES  
EMIRATES PEARL

**WESTIN**  
HOTELS & RESORTS

**RIXOS**  
BAB AL BAHR

**FLORA GROUP**  
HOTELS  
DUBAI

روتانا  
**Rotana**

**CITY SEASONS**  
GROUP OF HOTELS

**ARENCO**  
REAL ESTATE

**NAKHEEL**

**INTERCONTINENTAL**  
HOTELS & RESORTS

**AL HABTOOR CITY**  
الحنور سيتي

**IHG**  
InterContinental Hotels Group

سلطة واحة دبي للسيليكون  
Dubai Silicon Oasis Authority

**DAMAC**

**TECOM**  
INVESTMENTS

أتانا خصب  
ATANA KHASAB

**SORHA**  
PASSION NETWORK

**EMAAR**

**meydan**  
**aloft**  
HOTELS

# OFFICE & FACILITIES





# غرفة دبي

## DUBAI CHAMBER

### شهادة تسجيل العضوية

### Membership Certificate

License no.	656806	رقم الرخصة	656806
Membership no.	191196	رقم العضوية	191196
Registration no.	1079688	رقم التسجيل التجاري	1079688
Trade Name	GALLERY MERMAID TECHNICAL WORKS LLC	الاسم التجاري	غاليري ميرمايد للتقنية للأدوم
Legal Status	Limited Liability Company(LLC)	النوع القانوني	شركة مسؤولية محدودة
Activity	Wallpaper Firing Studio	نوع النشاط	أستوديو لفك ورق السيراميك
Member Since	18/07/2011	التاريخ الانضمام	18/07/2011
Date of Issue	18/07/2011	تاريخ الإصدار	18/07/2011
Expiry Date	18/07/2022	تاريخ الانتهاء	18/07/2022

#### ملاحظات

This certificate shall be invalid in case of any alteration without member's authorization.  
For online verification of this Certificate, please visit our website: <http://www.dubai-chamber.com/verify>

الغرفة التجارية للغرفة التجارية  
Dubai Chamber of Commerce & Industry

PO Box 1457 • Dubai, U.A.E. | Tel: 04 369 1000 | Email: info@dcc.ae | Fax: 04 369 1000  
P.O. Box 1457 • دبي 1457 | هاتف: 04 369 1000 | بريد إلكتروني: info@dcc.ae | فاكس: 04 369 1000



# اقتصاد دبي

## DUBAI ECONOMY

### شهادة شهر قيد شركة في السجل التجاري

### Commercial Register

معلومات الشركة / Register Details		رقم الرخصة / License No.	
Main Lic. No.	656806	رقم التسجيل / Registration No.	1079688
Company Name	GALLERY MERMAID TECHNICAL WORKS LLC	غاليري ميرمايد للتقنية للأدوم	
Legal Type	Limited Liability Company(LLC)	شركة مسؤولية محدودة	
Expiry Date	18/07/2022	تاريخ الانتهاء / Exp. Date	18/07/2022
OSR O-G-R-S No.			0
Capital Details / Details of Capital			
Nominal	300,000	اسمي	300,000
Paid	300,000	معبر	300,000
No. of Shares	0	عدد الأسهم	0
Currency	USD (Share)	عملة	USD (Share)
License Address / Address of License			
عنوان إجازة / License Address			
Commercial Address / Address of Commercial Activity			
عنوان النشاط التجاري / Commercial Address			
Register Activities / List of Activities			
نشاطات التسجيل / Register Activities			
Workshop / Factory / Office			
محل العمل / Workshop / Factory / Office			

Wallpaper Firing Studio

Print Date	18/07/2021	10:30	التاريخ المطبوع	18/07/2021	10:30	رقم التسجيل	14081496
How you can renew your trade license by sending a text message (SMS). Send your trade license number to 5555 (Dial 5555) to receive payment voucher.			كيفية تجديد رخصة تجارة التجار عن طريق إرسال رسالة نصية (SMS). أرسل رقم رخصة تجارة التجار الخاصة بك إلى 5555 (الرقم 5555) لتلقي إشعار الدفع.			www.dubaid.gov.ae	

www.dubaid.gov.ae  
Approved electronic document issued without signature by the Department of Economic Development. To verify the license kindly visit www.dubaid.gov.ae



# اقتصاد دبي

## DUBAI ECONOMY

### شهادة شهر قيد شركة في السجل التجاري

### Commercial Register

Main Lic. No.		رقم الرخصة / License No.	رقم التسجيل / Registration No.
656806		1079688	1079688
Company Name		اسم الشركة / Company Name	
GALLERY MERMAID TECHNICAL WORKS LLC		غاليري ميرمايد للتقنية للأدوم	
Legal Type		النوع القانوني / Legal Type	
Limited Liability Company(LLC)		شركة مسؤولية محدودة	
Expiry Date		تاريخ الانتهاء / Exp. Date	
18/07/2022		18/07/2022	
SAR 0-0-0-0-0-0		رقم السجل / Reg. No.	
0		0	
Capital Details / Details of Capital			
Nominal		الاسمي / Nominal	
300,000		300,000	
Paid		المعبر / Paid	
300,000		300,000	
No. of Shares		عدد الأسهم / No. of Shares	
0		0	
Currency		عملة / Currency	
SAR (Share)		ريال سعودي (سهم)	
License Address / Address of License			
عنوان الرخصة / Address of License			
Commercial Address / Address of Commercial Activity			
عنوان العمل / Address of Commercial Activity			
Register Activities / List of Activities			
نشاطات التسجيل / List of Activities			
Wallpaper Fixing Works			

Wallpaper Firing Studio

Print Date	18/07/2021	10:30	التاريخ المطبوع	18/07/2021	10:30	رقم التسجيل	14081496
How you can renew your trade license by sending a text message (SMS). Send your trade license number to 5555 (Dial 5555) to receive payment voucher.			كيفية تجديد رخصة تجارة التجار عن طريق إرسال رسالة نصية (SMS). أرسل رقم رخصة تجارة التجار الخاصة بك إلى 5555 (الرقم 5555) لتلقي إشعار الدفع.			www.dubaid.gov.ae	

www.dubaid.gov.ae  
Approved electronic document issued without signature by the Department of Economic Development. To verify the license kindly visit www.dubaid.gov.ae



---

GALLERY MERMAID TECHNICAL WORKS LLC  
26<sup>TH</sup> STREET, AL QUOZ INDUSTRIAL 4

DUBAI , UAE

---

[www.mermaiddigital.com](http://www.mermaiddigital.com)

CONTACT NUMBER : + 971 55 645 7003

---

