

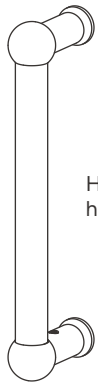
# Harper pull handle

## INSTRUCTIONS

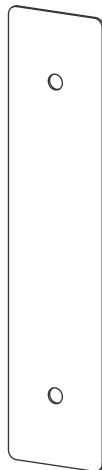
Single pull handle	1
Double pull handle	5

## Single pull handle

### INCLUDED



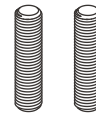
Harper pull  
handle x1



Harper pull  
handle plate (if  
plate version) x1



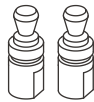
Rubber  
washer x2



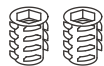
Threaded bar x2



Double-sided  
pad (if plate  
version) x1



Handle anchor  
(supplied inside  
handle on  
receipt) x2



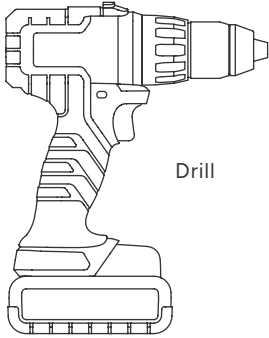
Insert nut x2



2.5mm hex key x1

## Single pull handle

### TOOLS YOU'LL NEED



Drill



8mm hex key



2mm drill bit



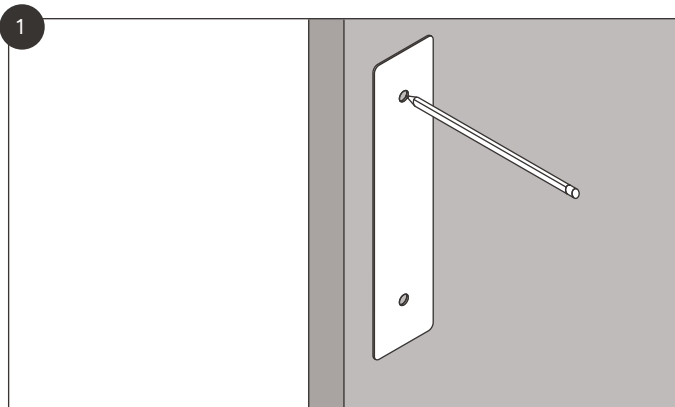
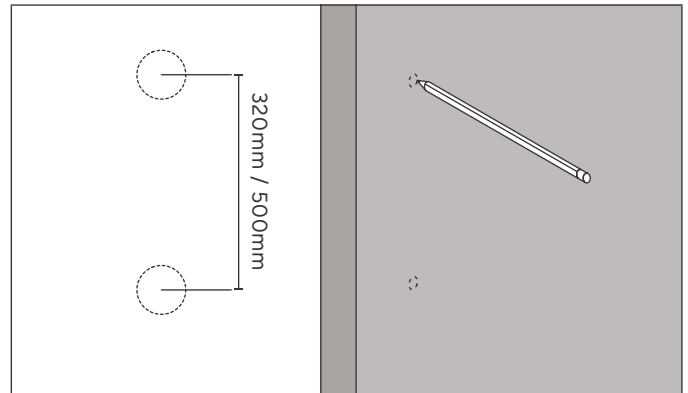
10mm drill bit

## Single pull handle

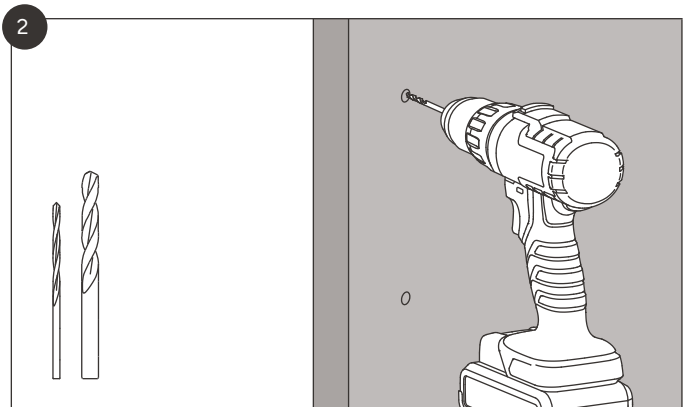
### IF INSTALLING WITHOUT A PLATE:

Mark out the holes in the diagram opposite instead of step 1.

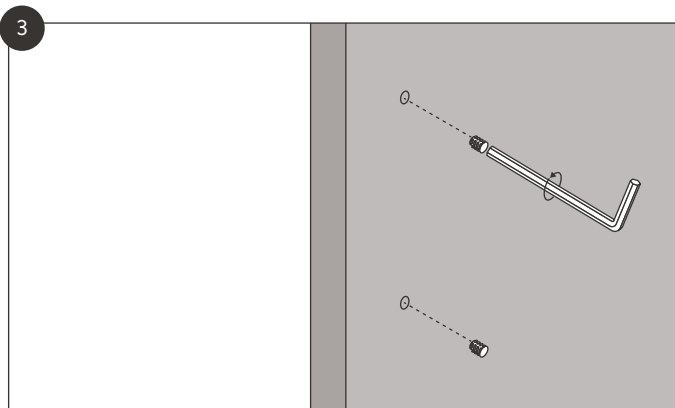
Rubber washers can be used to protect the door frame but will still be visible.



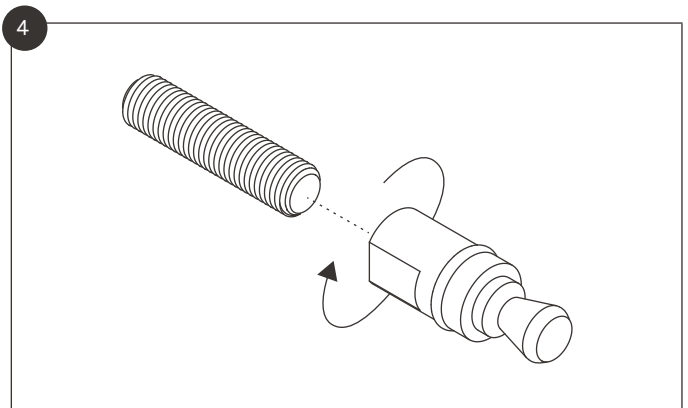
Use the pull handle plate as a template to mark the position of the holes.



Create pilot holes and use these to drill 10mm holes in the positions marked.

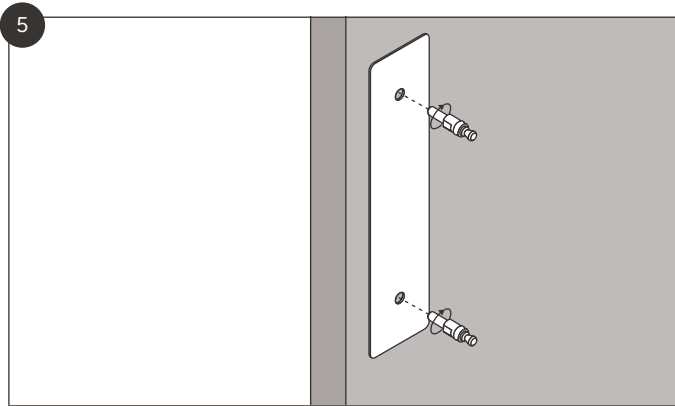


Use an 8mm hex key (not provided) to screw in the insert nuts.

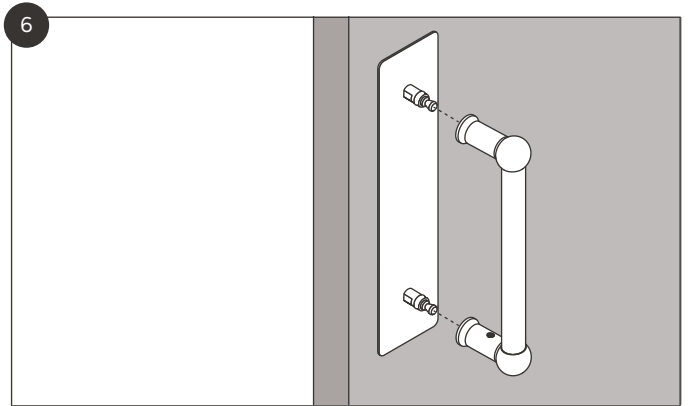


Screw the threaded bar all the way into the handle anchor.

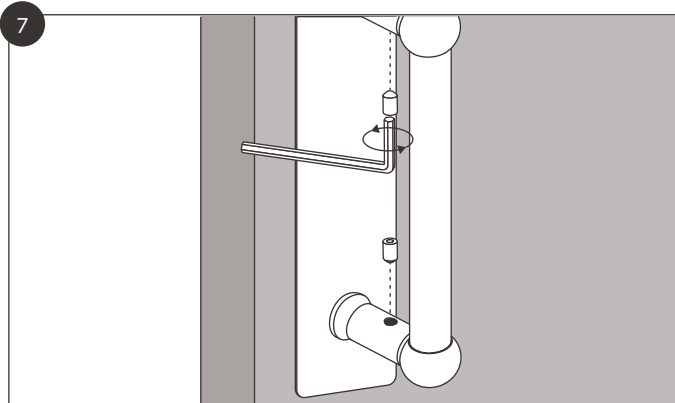
## Single pull handle



Screw the anchors into the door over the plate and tighten by hand. Use a spanner for more robust doors.



Attach the handle to the anchors. Both ends of the handle should be flush with the plate/door.

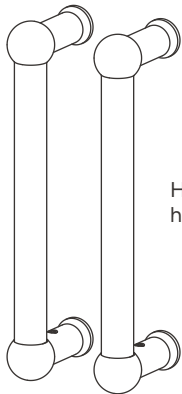


Use the 2.5mm hex key to tighten the two grub screws on the inside of the handle.

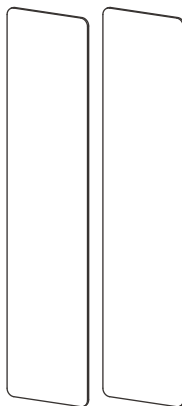
**Please note:** the double-sided pad can be used to secure the plate to the door. This is to assist with uneven door surfaces. Once attached to the plate, it cannot be removed. Only use if the plate isn't stable without it.

## Double pull handle

### INCLUDED



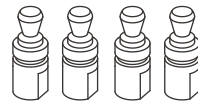
Harper pull  
handle x2



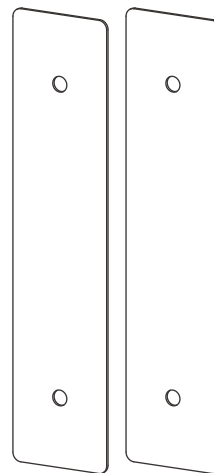
Double-  
sided pad  
(if plate  
version) x2



Threaded  
bar x4



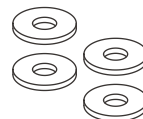
Handle anchor  
(supplied inside  
handles on  
receipt) x4



Harper pull  
handle plate (if  
plate version) x2



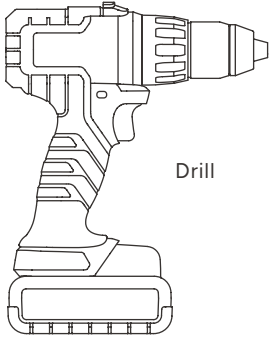
2.5mm hex  
key x1



Rubber  
washer x4

## Double pull handle

### TOOLS YOU'LL NEED



Drill



8mm hex key



2mm drill bit



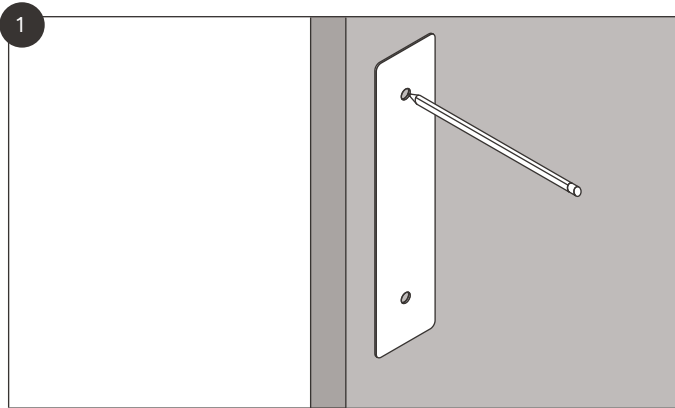
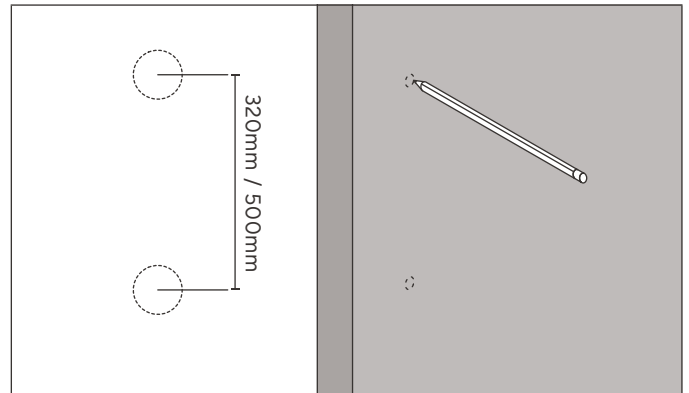
10mm drill bit

## Double pull handle

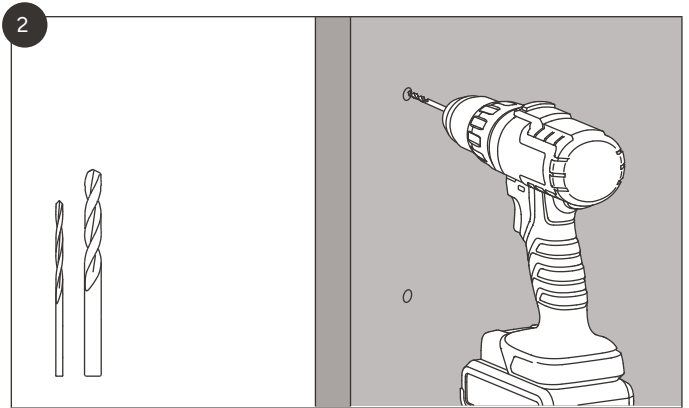
### IF INSTALLING WITHOUT A PLATE:

Mark out the holes in the diagram opposite instead of step 1.

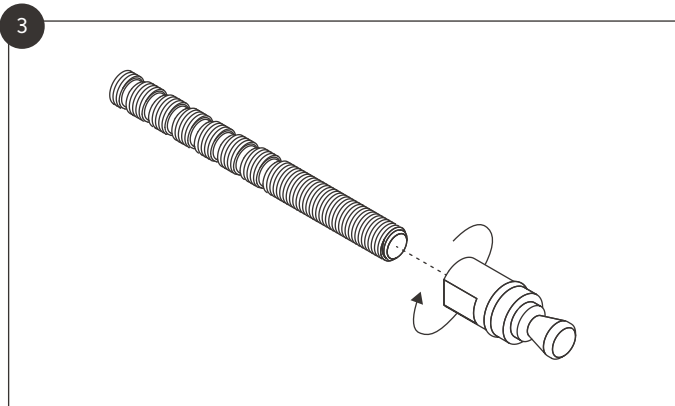
Rubber washers can be used to protect the door frame but will still be visible. **Rubber washers must be used when attaching to glass doors.**



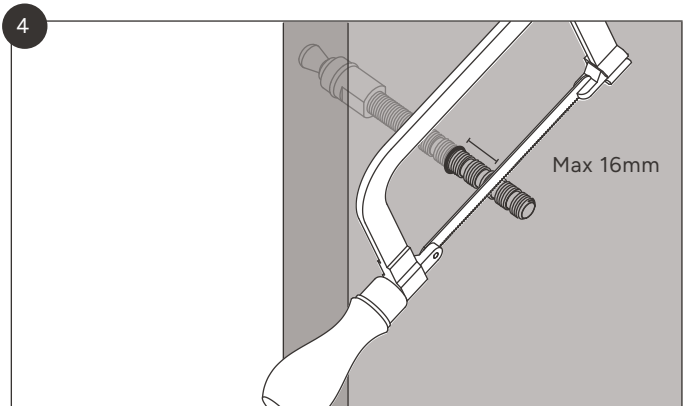
Use the pull handle plate as a template to mark the position of the holes.



Create pilot holes and use these to drill 10mm holes in the positions marked.

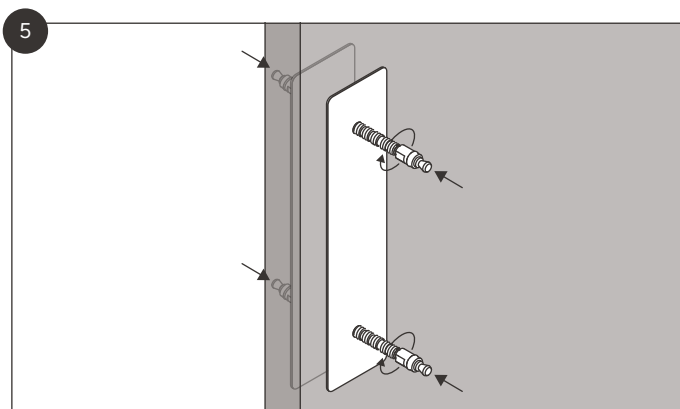


Screw the threaded bar all the way into the handle anchor.

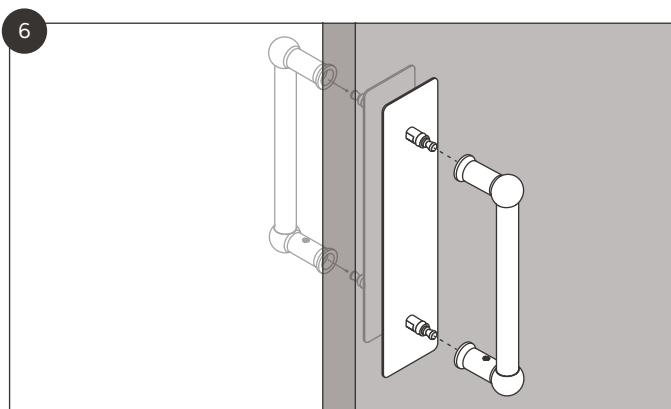


Insert the threaded bar through the door. Cut up to 16mm of threaded bar on a thread clearance with a hacksaw.

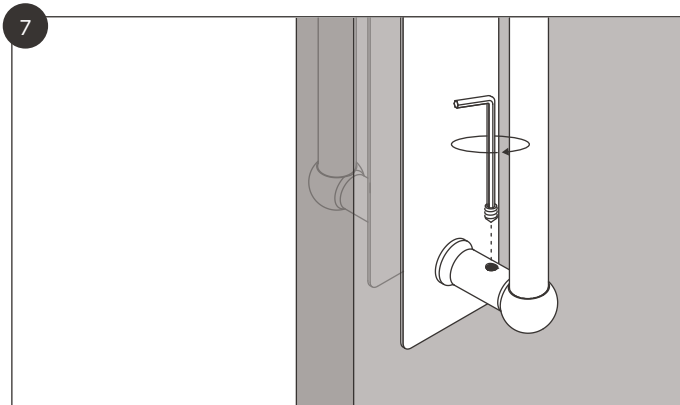
## Double pull handle



Screw the anchors into the door over the plate and tighten by hand. Use a spanner for more robust doors.



Attach the handles to the anchors. Both ends of the handle should be flush to the plate or the door.



Use the 2.5mm hex key to tighten the four grub screws on the inside of the handles.

**Please note:** the double-sided pad can be used to secure the plate to the door. This is to assist with uneven door surfaces. Once attached to the plate, it cannot be removed. Only use if the plate isn't stable without it.