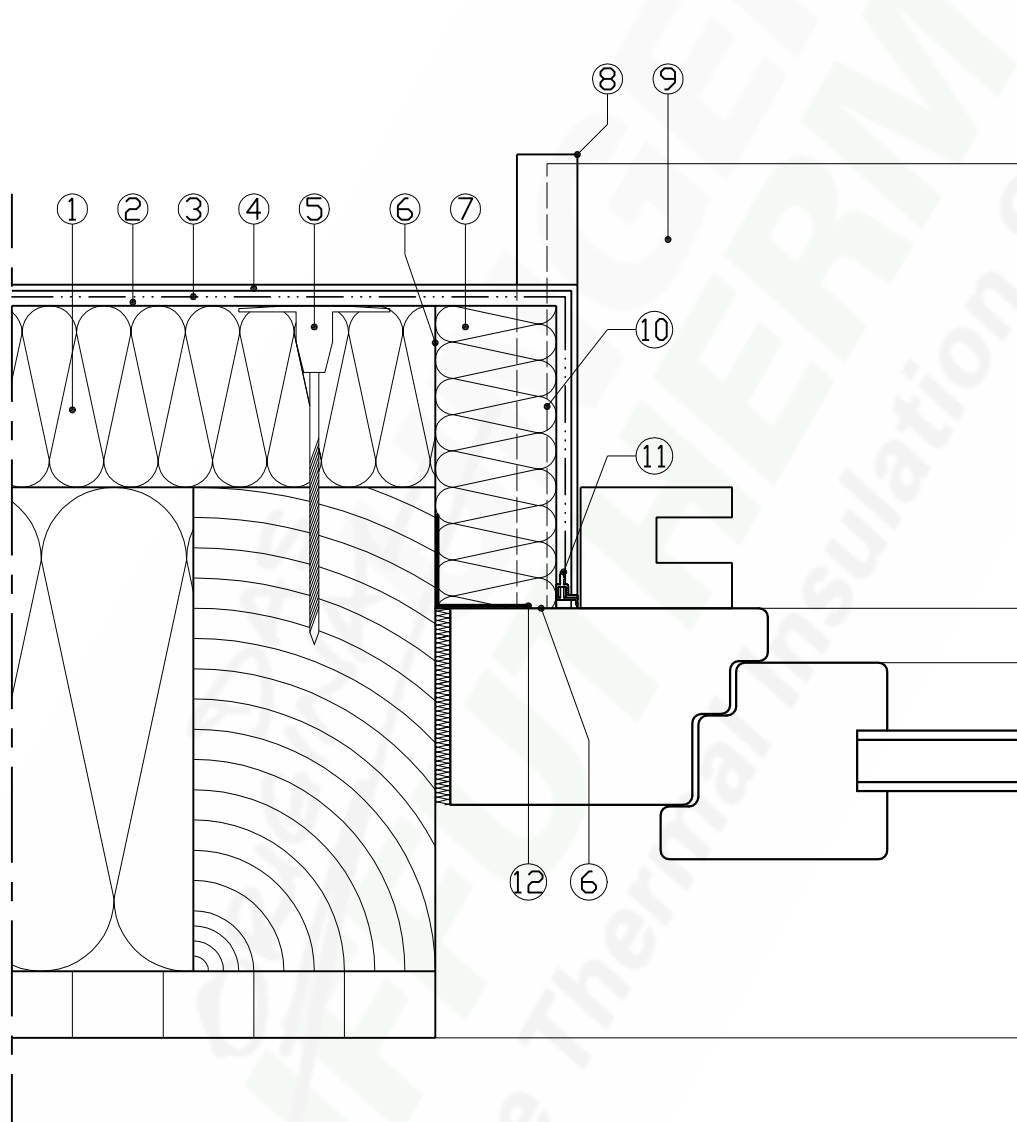


# Window sill installation with an external, roller shutter guide rail - View from above-



- |   |   |
|---|---|
| 1 - <b>UdiUNGER DIFFUTHERM</b> NF Wood-fibre insulation element     | 9 - <b>UdiALU</b> Window Sill                         |
| 2 - <b>UdiFOUNDATION COAT</b>                                       | 10 - <b>UdiJOINTING TAPE</b>                          |
| 3 - <b>UdiREINFORCEMENT</b> Strengthening Mesh                      | 11 - <b>UdiREINFORCEMENT</b> Render Edging Strip LATE |
| 4 - <b>UdiPERL</b> Structured Fine Render                           | 12 - <b>UdiSTEAM</b> Tape Elastoflex                  |
| 5 - <b>UdiASSEMBLY</b> Fixing                                       |   |
| 6 - Bonding using <b>UdiDISPERSION ADHESIVE</b>                     |   |
| 7 - <b>UdiUNGER DIFFUTHERM</b> L Reveal Insulation Board 20 or 40mm |   |
| 8 - <b>UdiALU</b> Side Piece - Expandable                           |   |

Date: 28.08.2009

The technical information provided in this document reflects our current state of knowledge and experience. We reserve the right to make any changes we deem necessary to improve the product or its application and installation. The information contained within this document supersedes all previously dated documents and the information contained within them is herewith invalid.