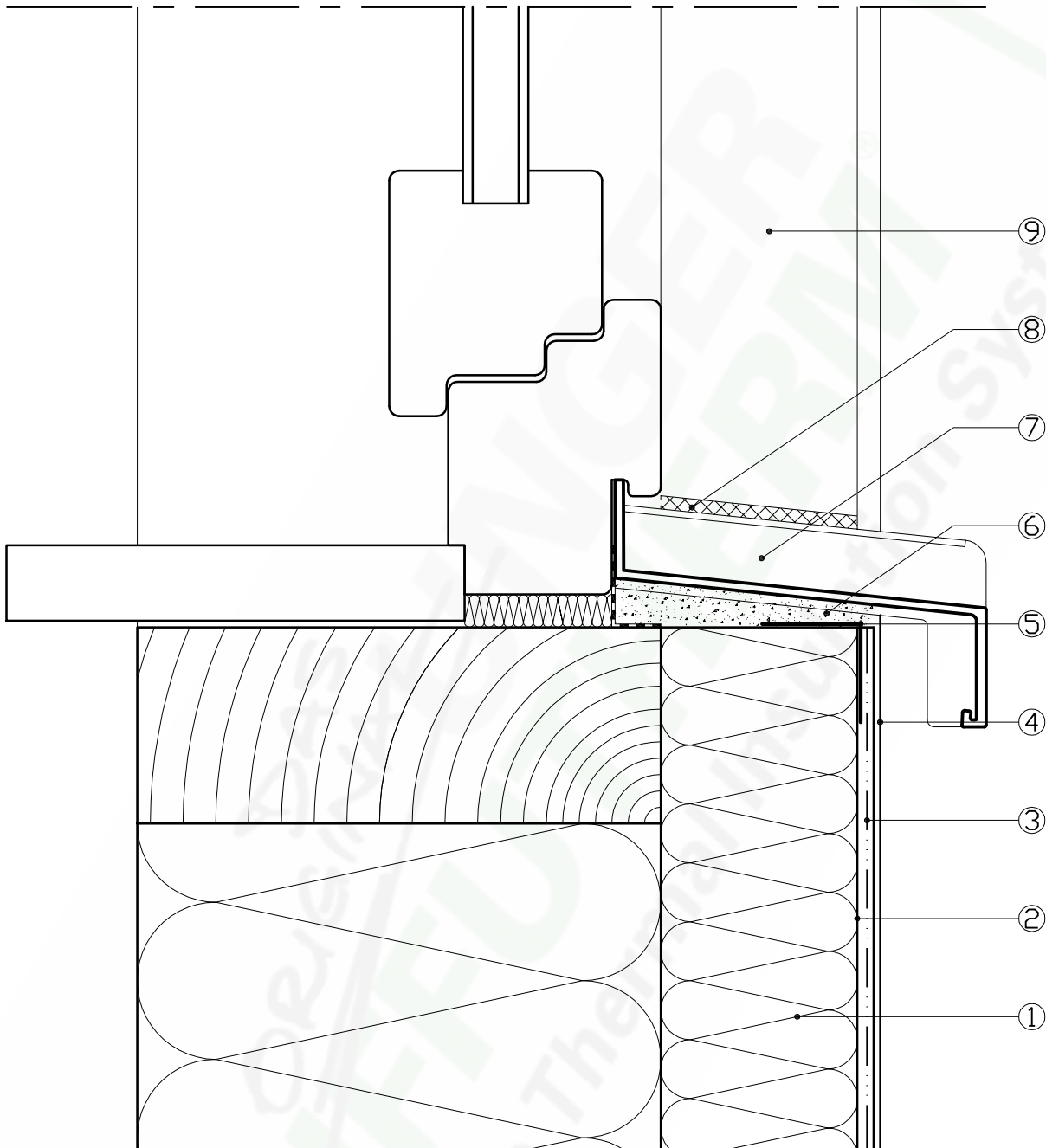


Window area installation with an aluminium sill



- 1 - **UdiUNGER DIFFUTHERM** NF Wood-fibre insulation element
- 2 - **UdiFOUNDATION COAT**
- 3 - **UdiREINFORCEMENT** Strengthening Mesh
- 4 - **UdiPERL** Structured Fine Render
- 5 - **UdiREINFORCEMENT** Corner Protection Profile
- 6 - **UdiFOUNDATION COAT**
- 7 - **UdiALU** Side Piece - Expandable. With a waterproof expansion compensator
- 8 - **UdiJOINTING TAPE**
- 9 - **UdiUNGER DIFFUTHERM** L Reveal Insulation Board

Date: 27.08.2009

The technical information provided in this document reflects our current state of knowledge and experience. We reserve the right to make any changes we deem necessary to improve the product or its application and installation. The information contained within this document supersedes all previously dated documents and the information contained within them is herewith invalid.

NR 4.01

