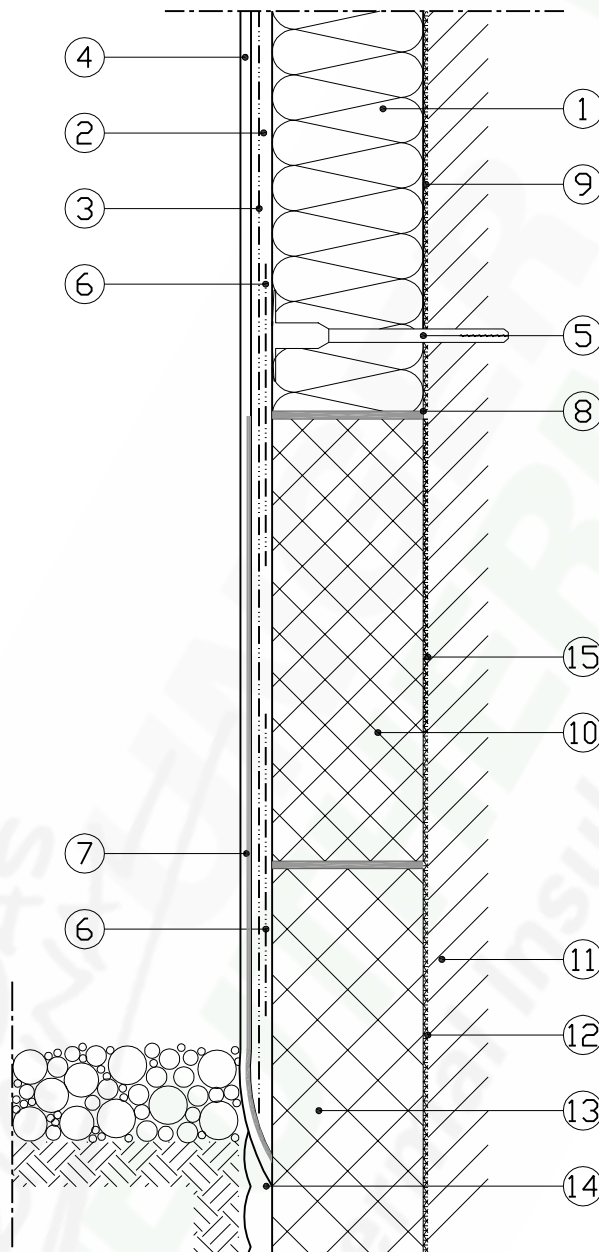


Building perimeter installation without a plinth profile



- | | |
|--|---|
| 1 - Udi UNGER DIFFUTHERM NF Wood-fibre insulation element | 10 - Perimeter insulation |
| 2 - Udi FOUNDATION COAT | 11 - Substrate (e.g. Masonry) |
| 3 - Udi REINFORCEMENT Strengthening Mesh | 12 - Bonding layer below ground level |
| 4 - Udi PERL Structured Fine Render | 13 - Insulation below ground level |
| 5 - Udi ASSEMBLY Fixing | 14 - e.g. Drainage element |
| 6 - Udi REINFORCEMENT Strengthening Mesh Strips | 15 - Full surface bonding using
Udi BASE Plinth Slurry |
| 7 - Udi BASE Plinth Slurry | |
| 8 - Form-fitted bonding using Udi BASE Plinth Slurry
or Udi Dispersion Adhesive | |
| 9 - Bonding of the first row of boards using
Udi FOUNDATION COAT | |

Date: 28.08.2009

The technical information provided in this document reflects our current state of knowledge and experience. We reserve the right to make any changes we deem necessary to improve the product or its application and installation. The information contained within this document supersedes all previously dated documents and the information contained within them is herewith invalid.

NR 1.02

