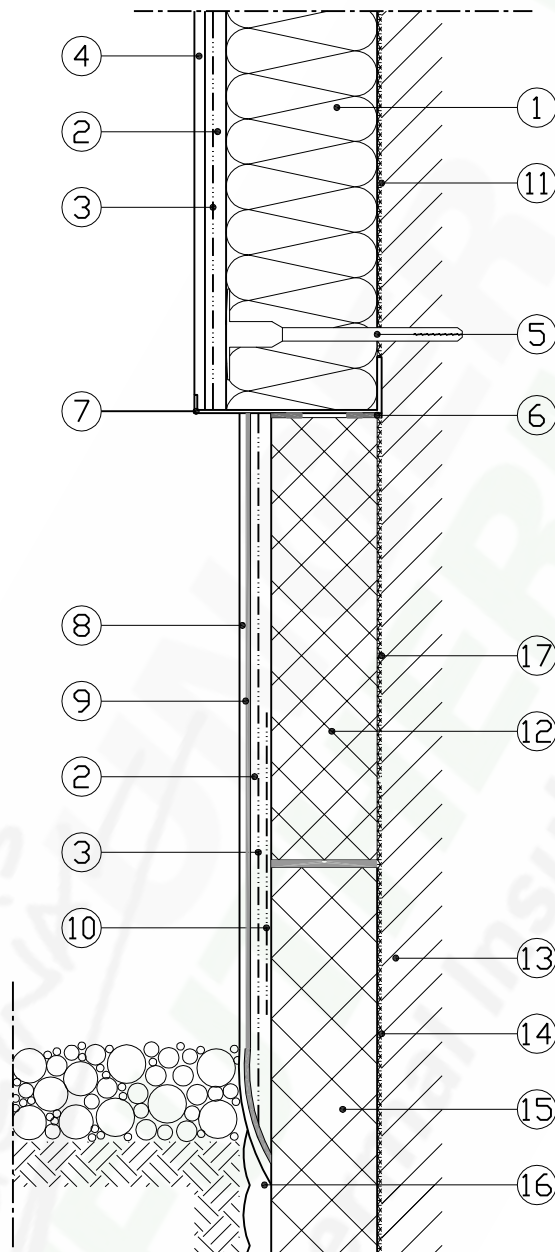


Building perimeter installation using a plinth profile



- | | |
|--|---|
| 1 - Udi UNGER DIFFUTHERM NF Wood-fibre insulation element | 10 - Udi REINFORCEMENT Strengthening Mesh Strips |
| 2 - Udi FOUNDATION COAT | 11 - Bonding of the first row of boards using Udi FOUNDATION COAT |
| 3 - Udi REINFORCEMENT Strengthening Mesh | 12 - Perimeter insulation |
| 4 - Udi PERL Structured Fine Render | 13 - Mineral-based substrate (e.g. Masonry) |
| 5 - Udi ASSEMBLY Fixing | 14 - Bonding layer below ground level |
| 6 - Udi JOINTING TAPE | 15 - Insulation below ground level |
| 7 - Udi BASE Plinth End Cap Profile including Udi BASE Plinth Edging Strip | 16 - e.g. Drainage element |
| 8 - Udi BASE Fine Mosaic Render or Udi PERL Structured Fine Render | 17 - Full surface bonding using Udi BASE Plinth Slurry |
| 9 - Udi BASE Plinth Slurry | |

NR 1.01

Date: 08.10.2008

The technical information provided in this document reflects our current state of knowledge and experience. We reserve the right to make any changes we deem necessary to improve the product or its application and installation. The information contained within this document supersedes all previously dated documents and the information contained within them is herewith invalid.

